

MOST ACTIVE GOVERNMENT BONDS

Bond	Coupon	Maturity	Last Price	Yield	Volume (IDR bn)
FR0109	5.875	15-Mar-31	95.10	7.196	5,962.85
FR0108	6.500	15-Apr-36	94.50	7.244	2,985.28
PBS032	4.875	15-Jul-26	99.96	7.311	1,570.50
PBS003	6.000	15-Jan-27	99.53	7.030	1,190.18
FR0091	6.375	15-Apr-32	96.25	7.181	926.18
FR0082	7.000	15-Sep-30	99.30	7.138	709.71
SPN12270107	-	7-Jan-27	96.46	-	704.22
FR0100	6.625	15-Feb-34	96.65	7.214	622.47
FR0059	7.000	15-May-27	99.85	7.169	527.76
FR0106	7.125	15-Aug-40	99.00	7.268	496.96

*Current yield; Coupon, Last Price & Yield are in %; Volume is in IDR bn; Rating code: id(Pefindo) & idn (Fitch Indonesia)

Sources: Bloomberg; Indonesia Stock Exchange (Volume)

MOST ACTIVE CORPORATE BONDS

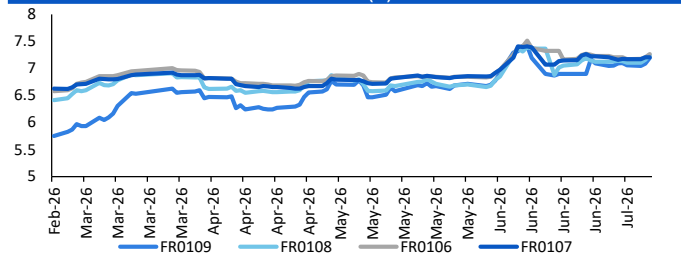
Bond	Rating	Coupon	Maturity	Last Price	Yield	Volume
MDKA05CN3	A+	8.250	8-Jul-27	100.00	8.25	1,215.00
SMLPPI01CN1	A	11.000	4-Oct-29	111.22	7.09	387.80
IIF03ACN1	AAA	7.400	18-Jul-27	100.00	7.40	300.00
BAFI04ACN1	AAA	7.400	18-Jul-27	99.90	7.50	250.00
SMM02CN4	BBB+	10.500	7-Mar-33	117.99	7.09	240.00
SIJIE02C	A	9.750	9-Apr-29	99.65	9.90	227.00
BOLD03A	A+	6.750	20-Oct-26	99.61	6.78	180.00
SMSMI03ACN2	AAA	5.000	7-Dec-26	99.43	5.03	150.00
INKP05BCN5	A+	9.500	30-Sep-30	97.50	10.24	130.05
NIRO01XXMF	-	9.500	21-Dec-26	100.09	9.49	120.00

SOVEREIGN BOND YIELDS

Country	Tenor	Coupon (%)	MA LTM as of			Spread over UST YC (bps)		
			8-Jul-26	of Jun	May	8-Jul-26	Jun	May
United States	2yr		4.25	4.18	4.05			
USD	5yr		4.32	4.23	4.14			
	10yr		1.51	1.58	1.68			
German	2yr	0.25	1.51	1.58	1.68	-271	-260	-232
EUR	5yr	1.00	1.51	1.58	1.68	-281	-265	-246
	10yr	1.75	3.07	2.86	2.94	156	129	125
Indonesia	2yr	3.50	4.27	4.25	4.18	5	7	18
USD	5yr	3.85	4.92	4.80	4.73	60	58	59
	10yr	6.63	5.67	5.53	5.50	416	396	381
Brazil	2yr	0.00	14.16	14.04	13.82	994	986	982
BRL	3yr	0.00	14.43	14.24	13.94	1,021	1,007	994
	10yr	10.00	1.51	1.58	1.68	-271	-260	-232
Philippines	2yr	6.00	6.27	6.18	6.85	205	200	285
PHP	5yr	7.88	1.51	1.58	1.68	-281	-265	-246
	10yr	11.38	7.11	6.86	7.42	560	529	573
Thailand	2yr	3.13	1.12	1.15	1.24	-310	-303	-276
THB	5yr	3.45	1.51	1.58	1.68	-281	-265	-246
	10yr	3.63	1.51	1.58	1.68	0	0	0
India	2yr	7.59	6.08	6.03	6.42	186	185	241
INR	5yr	7.28	6.44	6.43	6.82	212	220	268
	10yr	8.83	1.51	1.58	1.68	0	0	0
Malaysia	3yr	3.17	1.51	1.58	1.68	-274	-261	-237
MYR	5yr	3.26	3.41	3.39	3.41	-91	-84	-74
	10yr	4.18	1.51	1.58	1.68	0	0	0

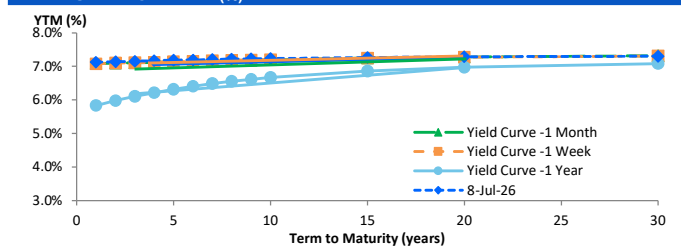
Sources: Bloomberg (Current Yield Curve), US Treasury

YIELD OF GOVERNMENT BOND BENCHMARK (%)



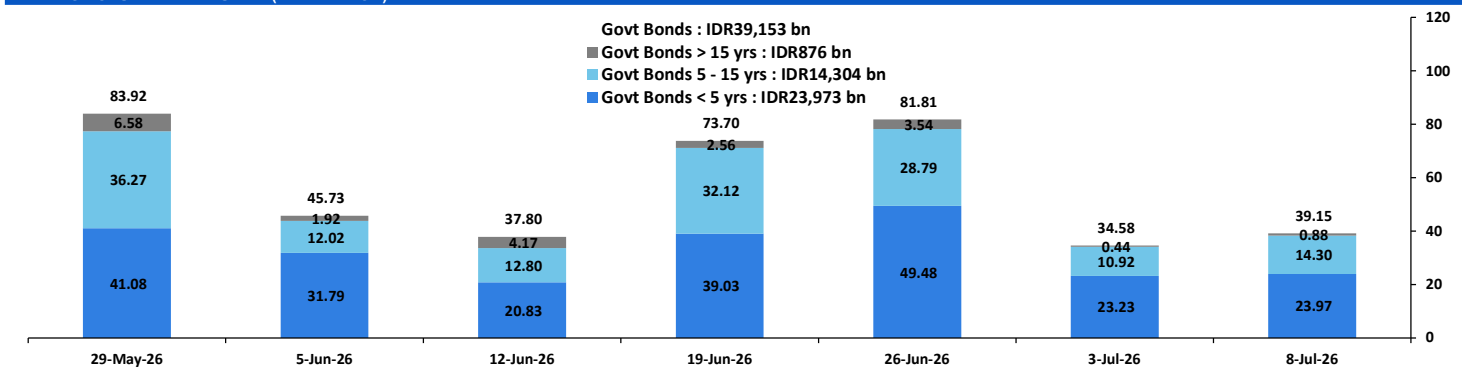
Source: Bloomberg

YIELD CURVE MOVEMENT (%)



Source: Bloomberg

TRADING VOLUME BY MATURITY (IDR TRILLION)



Sources: Indonesia Stock Exchange

CURRENCY

Price	8-Jul-26	-1 Day	-1 Week	-1 Month	EoP2025	
DXY	101.18	↑	101.02	101.39	100.05	98.32
USD/IDR	17,999	↑	17,982	17,948	18,178	16,690
EUR/USD	1.14	↓	1.14	1.14	1.15	1.17
USD/JPY	162.47	↑	162.10	162.58	160.16	156.71
USD/CNY	6.800	↑	6.796	6.791	6.783	6.988
USD/MYR	4.080	↑	4.074	4.094	4.074	4.060
SGD/IDR	13,927	↑	13,910	13,842	14,098	12,969

Source: Bloomberg

COMMODITY

Price	8-Jul-26	-1 Day	-1 Week	-1 Month	EoP2025	
CPO (Palm Oil)	4,506	↑	4,485	4,485	4,505	3,998
Coal	128.00	↓	128.40	129.60	151.25	107.50
Gold (XAU/USD)	4,053	↓	4,106	4,031	4,330	4,319
Nickel	16,152	↓	16,244	16,179	18,127	16,546
Copper	605.00	↓	617.15	612.35	635.00	568.20
Brent	79.03	↑	74.16	71.57	94.25	60.85
WTI	74.97	↑	70.44	68.58	91.30	57.42

PHEI FAIR SPREAD

	1Y	2Y	3Y	4Y	5Y	6Y	7Y	8Y	9Y	10Y
AAA	50	54	56	58	61	64	66	67	68	68
AA+	52	55	56	58	60	62	64	65	67	67
AA	65	68	69	70	71	73	74	76	77	78
AA-	97	102	103	104	105	106	107	108	109	109
A+	143	151	153	155	157	158	160	160	160	160
A	193	206	210	215	219	223	225	226	226	226
A-	241	260	269	277	285	292	298	301	303	303
BBB+	286	312	326	340	354	366	375	381	386	388
BBB	330	364	384	404	423	441	454	465	472	477

*interpolated, as of July 08, 2026 (bps)

Sources: PHEI, Bloomberg

SBN HOLDING - (IDR tn)

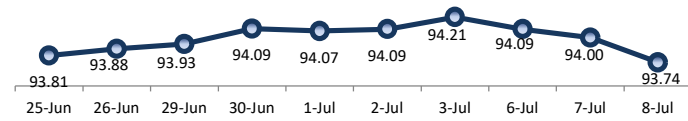
	06-Jul-2026	WoW	MoM	YTD
Banks	1,152.2	114.8	101.0	(176.4)
Bank Indonesia (exclude repo)	1,933.4	(118.6)	(107.0)	291.8
Non-Banks:				
Mutual Fund	257.0	1.4	5.0	14.1
Insurance & Pension Fund	1,426.5	0.0	(0.2)	135.9
Foreign Investor	890.0	4.4	4.3	11.3
Individual	559.9	2.1	1.6	22.6
Others	730.0	0.8	0.2	81.1
Total	6,949.1	4.9	4.9	380.3
Domestic Investor	4,125.7	119.1	107.5	77.2
Foreign Investor	890.0	4.4	4.3	11.3
Bank Indonesia (include repo)	1,724.3	(1.0)	(1.0)	83.7

Source: DJPPR (Processed)

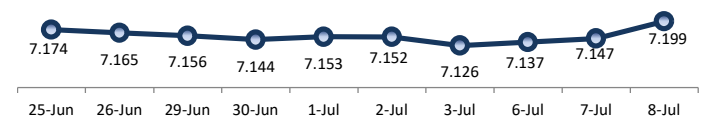
VALUATIONS OF GOVERNMENT BONDS

Bond	Issue Date	Mature Date	Coupon	TTM	Modified Duration	YTM	(Change)	Prev Closing Price	Fair Yield		Fair Price		Last Trade			
									Range	Range	Date	Price	Vol (IDR bn)	Freq		
FR0056	23-Sep-10	15-Sep-26	8.38	0.2	0.18	6.92	↑ 7.1bps	100.23	6.797	7.300	100.16	100.26	8-Jul-26	100.17	268.58	22
FR0090	8-Jul-21	15-Apr-27	5.13	0.8	0.73	7.11	↑ 3.9bps	98.54	7.004	7.273	98.41	98.60	8-Jul-26	99.90	182.13	83
FR0059	15-Sep-11	15-May-27	7.00	0.9	0.81	7.17	↑ 3.4bps	99.85	7.054	7.297	99.75	99.94	8-Jul-26	99.85	527.76	63
FR0042	25-Jan-07	15-Jul-27	10.25	1.0	0.92	7.05	↑ 2.9bps	103.08	6.881	7.247	102.90	103.26	6-Jul-26	103.15	12.00	1
FR0094	4-Mar-22	15-Jan-28	5.60	1.5	1.39	7.16	↓ -6.1bps	97.80	6.947	7.449	97.39	98.09	6-Jul-26	99.00	0.20	1
FR0047	30-Aug-07	15-Feb-28	10.00	1.6	1.42	7.16	↑ 5.4bps	104.21	6.993	7.301	104.00	104.48	8-Jul-26	105.30	0.20	2
FR0064	13-Aug-12	15-May-28	6.13	1.9	1.70	7.04	↑ 8.0bps	98.43	6.930	7.241	98.09	98.61	8-Jul-26	100.00	93.85	14
FR0095	19-Aug-22	15-Aug-28	6.38	2.1	1.89	7.17	↑ 4.8bps	98.48	7.067	7.217	98.37	98.66	8-Jul-26	98.95	310.53	37
FR0099	27-Jan-23	15-Jan-29	6.40	2.5	2.21	7.44	↑ 7.6bps	97.65	6.934	7.437	97.65	98.78	15-Jun-26	93.75	23.89	2
FR0071	12-Sep-13	15-Mar-29	9.00	2.7	2.31	7.13	↑ 8.8bps	104.47	7.018	7.188	104.34	104.76	8-Jul-26	106.35	119.97	10
FR0101	2-Nov-23	15-Apr-29	6.88	2.8	2.44	7.12	↑ 6.2bps	99.39	7.046	7.212	99.15	99.56	8-Jul-26	99.05	13.63	27
FR0078	27-Sep-18	15-May-29	8.25	2.9	2.49	7.18	↑ 7.8bps	102.70	7.082	7.260	102.50	102.96	8-Jul-26	103.25	24.75	15
FR0104	22-Aug-24	15-Jul-30	6.50	4.0	3.36	7.21	↑ 10.3bps	97.57	7.011	7.365	97.04	98.23	8-Jul-26	98.00	98.63	30
FR0052	20-Aug-09	15-Aug-30	10.50	4.1	3.24	7.18	↑ 5.3bps	111.59	6.867	7.293	111.19	112.79	8-Jul-26	111.30	9.00	1
FR0082	1-Aug-19	15-Sep-30	7.00	4.2	3.50	7.14	↑ 4.6bps	99.49	6.988	7.339	98.78	100.03	8-Jul-26	99.30	709.71	116
FRSDG001	27-Oct-22	15-Oct-30	7.38	4.3	3.57	6.81	↓ -0.3bps	102.04	6.752	7.254	100.42	102.26	25-Jun-26	100.55	3.00	1
FR0087	13-Aug-20	15-Feb-31	6.50	4.6	3.80	7.19	↑ 5.5bps	97.32	7.002	7.389	96.57	98.04	8-Jul-26	97.34	96.18	34
FR0109	15-Aug-25	15-Mar-31	5.88	4.7	3.93	7.20	↑ 11.1bps	94.81	6.875	7.310	94.38	96.04	8-Jul-26	95.10	5,962.85	93
FR0085	4-May-20	15-Apr-31	7.75	4.8	3.88	7.12	↓ -13.2bps	102.50	6.931	7.434	101.23	103.26	8-Jul-26	102.50	0.00	1
FR0073	6-Aug-15	15-May-31	8.75	4.9	3.90	7.10	↑ 1.4bps	106.67	7.033	7.263	105.97	106.94	8-Jul-26	106.35	5.54	5
FR0054	22-Jul-10	15-Jul-31	9.50	5.0	3.85	7.09	↑ 6.8bps	110.04	7.015	7.302	109.10	110.36	8-Jul-26	110.35	0.31	5
FR0091	8-Jul-21	15-Apr-32	6.38	5.8	4.66	7.18	↑ 7.6bps	96.24	7.010	7.281	95.78	97.01	8-Jul-26	96.25	926.18	50
FR0058	21-Jul-11	15-Jun-32	8.25	5.9	4.65	7.19	↓ -1.0bps	105.03	7.007	7.449	103.78	105.95	8-Jul-26	105.85	0.10	2
FR0074	10-Nov-16	15-Aug-32	7.50	6.1	4.71	7.20	↑ 8.4bps	101.43	7.067	7.410	100.43	102.11	8-Jul-26	102.35	0.13	6
FR0096	19-Aug-22	15-Feb-33	7.00	6.6	5.06	7.21	↑ 6.6bps	98.92	7.088	7.270	98.59	99.53	8-Jul-26	99.70	58.24	15
FR0065	30-Aug-12	15-May-33	6.63	6.9	5.35	7.15	↑ 2.1bps	97.20	6.950	7.453	95.61	98.24	8-Jul-26	98.50	5.33	24
FR0100	24-Aug-23	15-Feb-34	6.63	7.6	5.70	7.21	↑ 6.7bps	96.59	7.099	7.304	96.08	97.24	8-Jul-26	96.65	622.47	42
FR0068	1-Aug-13	15-Mar-34	8.38	7.7	5.55	7.21	↑ 5.7bps	106.76	7.129	7.274	106.38	107.26	8-Jul-26	106.75	132.37	25
FR0080	4-Jul-19	15-Jun-35	7.50	8.9	6.43	7.20	↑ 4.2bps	101.96	7.046	7.361	100.89	102.97	8-Jul-26	102.55	53.69	37
FR0103	29-Jul-25	15-Jul-35	6.75	9.0	6.40	7.27	↑ 11.7bps	96.63	7.117	7.288	96.49	97.58	8-Jul-26	97.00	450.34	33
FR0108	31-Jul-25	15-Apr-36	6.50	9.8	6.95	7.24	↑ 9.8bps	94.84	6.986	7.371	94.00	96.58	8-Jul-26	94.50	2,985.28	107
FR0072	9-Jul-15	15-May-36	8.25	9.9	6.73	7.17	↑ 2.9bps	107.50	7.129	7.285	106.68	107.82	8-Jul-26	107.85	12.50	11
FR0088	7-Jan-21	15-Jun-36	6.25	9.9	7.16	7.21	↑ 2.5bps	93.25	7.058	7.430	91.80	94.29	8-Jul-26	92.50	6.00	17
FR0045	24-May-07	15-May-37	9.75	10.9	6.93	7.29	↓ -1.6bps	118.25	6.960	7.463	116.79	120.99	8-Jul-26	119.65	0.00	2
FR0093	6-Jan-22	15-Jul-37	6.38	11.0	7.44	7.27	↑ 6.3bps	93.31	7.167	7.291	93.14	94.03	8-Jul-26	92.30	11.87	18
FR0075	10-Aug-17	15-May-38	7.50	11.9	7.73	7.27	↑ 3.3bps	101.81	6.963	7.465	100.25	104.28	8-Jul-26	102.20	10.90	13
FR0098	15-Sep-22	15-Jun-38	7.13	11.9	7.89	7.27	↑ 8.0bps	98.82	7.076	7.461	97.37	100.38	8-Jul-26	99.70	53.63	18
FR0050	24-Jan-08	15-Jul-38	10.50	12.0	7.08	7.31	↑ 5.6bps	125.24	6.665	7.168	126.55	131.37	2-Jul-26	124.85	1.00	1
FR0079	7-Jan-19	15-Apr-39	8.38	12.8	7.87	7.25	↑ 0.6bps	109.25	7.157	7.427	107.72	110.07	8-Jul-26	109.80	8.21	12
FR0083	7-Nov-19	15-Apr-40	7.50	13.8	8.42	7.28	↑ 8.0bps	101.90	7.095	7.451	100.40	103.51	8-Jul-26	101.50	16.68	27
FR0106	9-Jan-25	15-Aug-40	7.13	14.1	8.53	7.27	↑ 6.1bps	98.74	7.138	7.409	97.53	99.88	8-Jul-26	99.00	496.96	133
FR0057	21-Apr-11	15-May-41	9.50	14.9	8.44	7.22	↓ -5.4bps	120.55	7.163	7.358	119.14	121.14	6-Jul-26	119.73	4.38	1
FR0062	9-Feb-12	15-Apr-42	6.38	15.8	9.41	7.25	↑ 2.8bps	91.88	7.129	7.399	90.55	92.91	8-Jul-26	95.50	40.77	7
FR0092	8-Jul-21	15-Jun-42	7.13	15.9	9.35	7.26	↑ 3.3bps	98.77	7.173	7.357	97.84	99.54	8-Jul-26	100.50	10.17	34
FR0097	19-Aug-22	15-Jun-43	7.13	16.9	9.66	7.23	↑ 2.0bps	98.98	7.071	7.522	96.23	100.52	8-Jul-26	98.75	38.70	27
FR0067	18-Jul-13	15-Feb-44	8.75	17.6	9.21	7.27	↑ 2.1bps	114.57	7.095	7.522	111.87	116.48	8-Jul-26	115.65	0.01	2
FR0107	9-Jan-25	15-Aug-45	7.13	19.1	10.03	7.21	↑ 0.1bps	99.16	7.088	7.323	97.97	100.38	8-Jul-26	98.50	104.24	76
FR0076	22-Sep-17	15-May-48	7.38	21.9	10.69	7.33	↑ 1.1bps	100.50	7.229	7.418	99.52	101.58	8-Jul-26	101.55	90.03	47
FR0089	7-Jan-21	15-Aug-51	6.88	25.1	11.23	7.33	↑ 1.0bps	94.86	7.209	7.380	94.25	96.14	8-Jul-26	94.25	71.21	69
FR0102	5-Jan-24	15-Jul-54	6.88	28.0	11.56	7.33	↑ 2.5bps	94.63	7.171	7.407	93.75	96.44	8-Jul-26	95.30	51.39	76
FR0105	27-Aug-24	15-Jul-64	6.88	38.0	12.44	7.32	↑ 1.6bps	94.35	6.795	7.298	94.59	101.09	14-Apr-25	99.00	0.10	1
ORI024T6	8-Nov-23	15-Oct-29	6.35	3.3	-	7.06	↑ 4.4bps	97.94	6.776	7.279	97.30	98.75	8-Jul-26	98.50	0.44	5
ORI025T6	28-Feb-24	15-Feb-30	6.40	3.6	-	7.00	→ 0.0bps	98.10	6.723	7.226	97.39	98.97	8-Jul-26	97.30	2.04	12
ORI026T6	30-Oct-24	15-Oct-30	6.40	4.3	-	7.05	↑ 8.0bps	97.61	6.909	7.349	96.53	98.12	8-Jul-26	97.00	0.37	3
PBS003	2-Feb-12	15-Jan-27	6.00	0.5	0.49	7.03	↓ -0.4bps	99.49	6.864	7.367	99.31	99.56	8-Jul-26	99.53	1,190.18	109
PBS020	22-Oct-18	15-Oct-27	9.00	1.3	1.17	6.51	↓ -8.6bps	102.97	5.975	6.478	103.01	103.63	31-Jul-24	108.25	0.50	1
PBS018	4-Jun-18	15-May-28	7.63	1.9	1.69	6.57	↓ -6.8bps	101.79	6.369	6.830	101.35	102.15	3-Sep-19	99.29	2,000.00	2
PBS030	4-Jun-21	15-Jul-28	5.88	2.0	1.82	6.87	↓ -0.2bps	98.15	6.563	7.019	97.88	98.72	8-Jul-26	97.53	400.08	185
PBSG001	22-Sep-22	15-Sep-29	6.63	3.2	2.77	7.18	↑ 2.5bps	98.44	6.676	7.179	98.43	99.84	8-Jul-26	98.38	329.90	8
IFR0006	1-Apr-10	15-Mar-30	10.25	3.7	3.01	6.59	↑ -2.8bps	111.78	6.323	6.825	110.98	112.72	11-Mar-26	113.43	2.00	2
PBS023	15-May-19	15-May-30	8.13	3.9	3.26	6.27	↓ -2.5bps	106.25	6.091	6.400	105.79	106.88	6-Jul-26			

PRICE INDEX



YIELD INDEX



TECHNICAL ANALYSIS

FR0109

INDICATORS	8-Jul-26	-1 Day	Change
Last Price	94.81	95.23	(0.41)
DI+	29.65	32.40	(2.75)
DI-	49.23	44.86	4.37
ADX (15D)	26.03	26.11	(0.09)
A/D	-24,477.64	-15,725.53	(8,752.11)
CMF(20D)	-0.318	-0.209	(0.11)
CCI	-35.84	2.22	(38.06)
Volume (IDR bn)	5,962.85	9,896.36	(3,933.51)
Frequency	93	177	(84)

COMMENT

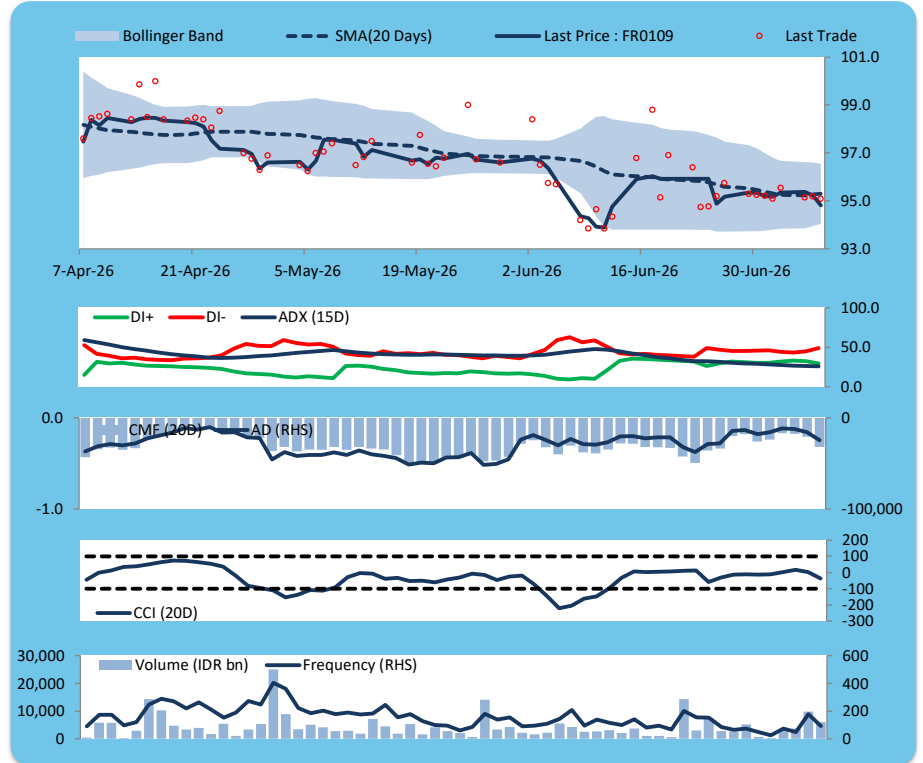
Price declined; heavy trade volume; downward trend continues to weaken; selling pressure increased; CCI declined.

SELL

FEATURES

Issue Date	14-Aug-25
Mature Date	15-Mar-31
Tenor	4.7
Coupon Rate	5.88
Last Yield	7.19
Modified Duration	3.93
Previous Coupon Date	15-Mar-26
Next Coupon Date	15-Sep-26

Sources: Bloomberg (Price); IDX



FR0108

INDICATORS	8-Jul-26	-1 Day	Change
Last Price	94.84	95.44	(0.60)
DI+	27.86	30.37	(2.51)
DI-	52.59	48.60	3.98
ADX (15D)	27.19	26.93	0.25
A/D	-18,046.86	-15,670.73	(2,376.13)
CMF(20D)	-0.425	-0.347	(0.08)
CCI	-29.72	12.07	(41.79)
Volume (IDR bn)	2,985.28	11,634.58	(8,649.30)
Frequency	107	185	(78)

COMMENT

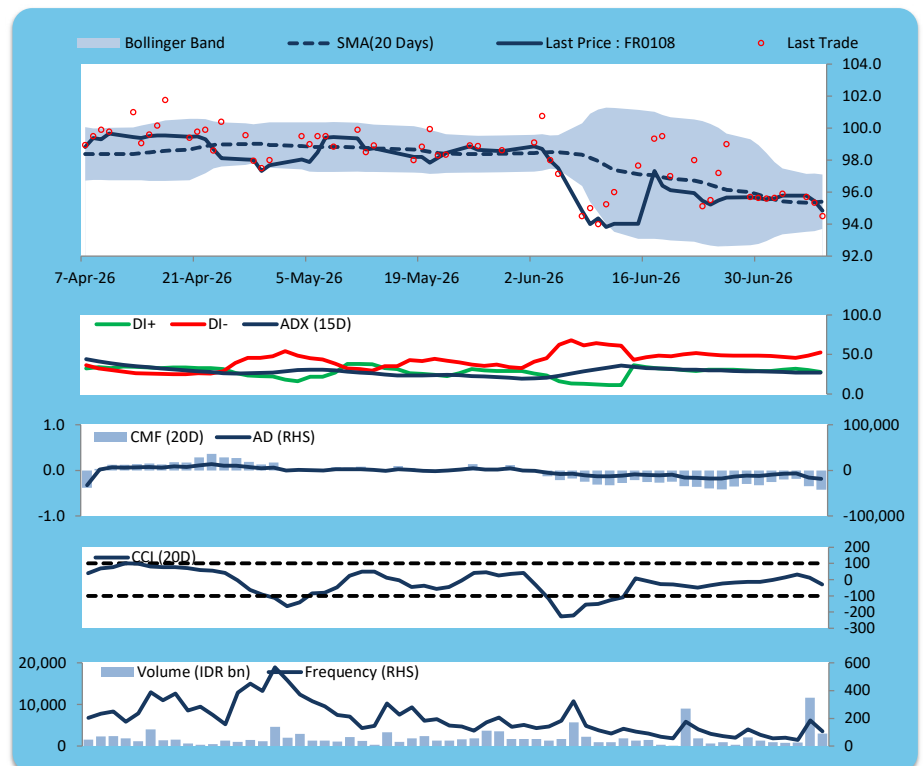
Price declined; heavy trade volume; downward trend continues to strengthen; selling pressure increased; CCI declined.

SELL

FEATURES

Issue Date	31-Jul-25
Mature Date	15-Apr-36
Tenor	9.8
Coupon Rate	6.50
Last Yield	7.24
Modified Duration	6.95
Previous Coupon Date	15-Apr-26
Next Coupon Date	15-Oct-26

Sources: Bloomberg (Price); IDX



FR0106

INDICATORS	8-Jul-26	-1 Day	Change
Last Price	98.78	99.31	(0.53)
DI+	25.32	27.49	(2.17)
DI-	47.65	43.73	3.92
ADX (15D)	33.87	34.11	(0.23)
A/D	-5,258.64	-4,827.09	(431.55)
CMF(20D)	-0.298	-0.258	(0.04)
CCI	14.17	52.34	(38.17)
Volume (IDR bn)	496.96	2,291.82	(1,794.86)
Frequency	133	132	1

COMMENT

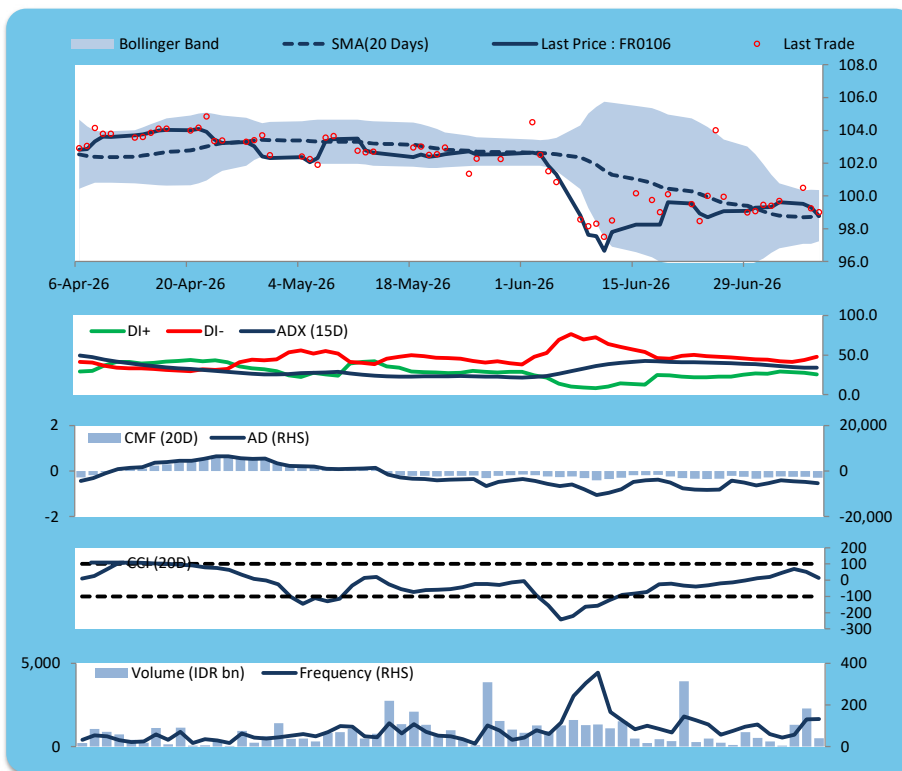
Price declined; moderate trade volume; downward trend continues to weaken; selling pressure increased; CCI declined.

SELL

FEATURES

Issue Date	9-Jan-25
Mature Date	15-Aug-40
Tenor	14.1
Coupon Rate	7.13
Last Yield	7.26
Modified Duration	8.53
Previous Coupon Date	15-Feb-26
Next Coupon Date	15-Aug-26

Sources: Bloomberg (Price); IDX



FR0107

INDICATORS	8-Jul-26	-1 Day	Change
Last Price	99.16	99.19	(0.03)
DI+	26.63	26.75	(0.12)
DI-	39.68	39.74	(0.05)
ADX (15D)	27.15	27.69	(0.53)
A/D	-655.45	-1,219.09	563.64
CMF(20D)	-0.067	-0.114	0.05
CCI	9.34	22.83	(13.49)
Volume (IDR bn)	104.24	919.65	(815.41)
Frequency	76	73	3

COMMENT

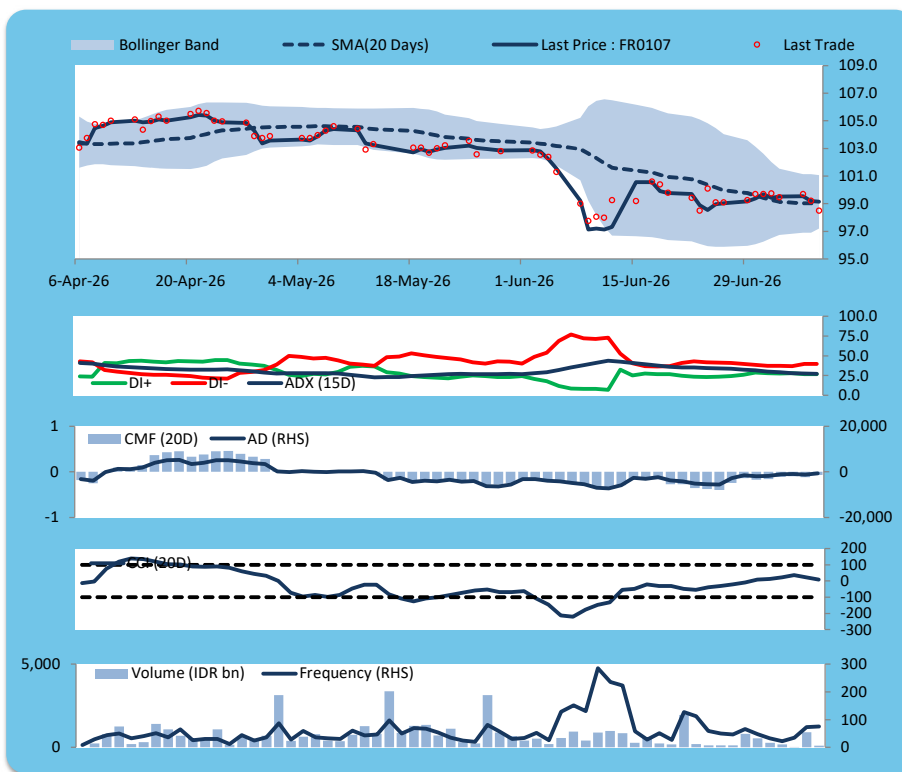
Price declined slightly; light trade volume; downward trend continues to weaken; selling pressure eased; CCI declined.

SELL

FEATURES

Issue Date	9-Jan-25
Mature Date	15-Aug-45
Tenor (year)	19.1
Coupon Rate	7.13
Last Yield	7.21
Modified Duration	10.03
Previous Coupon Date	15-Feb-26
Next Coupon Date	15-Aug-26

Sources: Bloomberg (Price); IDX



ECONOMIC AND FIXED INCOME RESEARCH TEAM**Chief Economist and Head Fixed Income Research**

Helmy Kristanto	helmy.kristanto@brids.co.id	(62-21) 5091 4100 ext. 3400
-----------------	-----------------------------	-----------------------------

Economists

Relindya Yuriswari Salehaningtyas	relindya.salehaningtyas@brids.co.id	(62-21) 5091 4100 ext. 3609
Ebenezer Mesotuhu Harefa	ebenezer.harefa@brids.co.id	(62-21) 5091 4100 ext. 3609

Credit Analyst

Laras Nerpatari Suliyas	laras.nerpatari@brids.co.id	(62-21) 5091 4100 ext. 3403
-------------------------	-----------------------------	-----------------------------

Production & Database Management

Eka Nuraini	ekan@brids.co.id	(62-21) 5091 4100 ext. 3407
Faiqul Kurnia Muslim	faiqul.muslim@brids.co.id	(62-21) 5091 4100 ext. 3402

INSTITUTIONAL DEBT SALES & TRADING TEAM**Head of Debt Capital Market**

Yopi Chandra Wardhani	yopi.wardhani@brids.co.id	(62-21) 5091 4100 ext. 3220
-----------------------	---------------------------	-----------------------------

Debt Sales

Rachmat Eko Putranto	rachmat.putranto@brids.co.id	(62-21) 5091 4100 ext. 3218
Rafi Hutama Soeriaatmadja	rafi.soeriaatmadja@brids.co.id	(62-21) 5091 4100 ext. 3926
Adzkia Zahra	adzkia.zahra@brids.co.id	(62-21) 5091 4100 ext. 3924

Debt Brokerage

Citra Isramij P.	citra.isramij@brids.co.id	(62-21) 5091 4100 ext. 3228
Sisca Emilia	sisca.emilia@brids.co.id	(62-21) 5091 4100 ext. 3921
Deviano Sujitno	deviano.sujitno@brids.co.id	(62-21) 5091 4100 ext. 3925

DISCLAIMER: The information contained in this report has been taken from sources which we deem reliable. However, none of P.T. BRI Danareksa Sekuritas and/or its affiliated companies and/or their respective employees and/or agents makes any representation or warranty (express or implied) or accepts any responsibility or liability as to, or in relation to, the accuracy or completeness of the information and opinions contained in this report or as to any information contained in this report or any other such information or opinions remaining unchanged after the issue thereof. We expressly disclaim any responsibility or liability (express or implied) of P.T. BRI Danareksa Sekuritas, its affiliated companies and their respective employees and agents whatsoever and howsoever arising (including, without limitation for any claims, proceedings, action, suits, losses, expenses, damages or costs) which may be brought against or suffered by any person as a result of acting in reliance upon the whole or any part of the contents of this report and neither P.T. BRI Danareksa Sekuritas, its affiliated companies or their respective employees or agents accepts liability for any errors, omissions or mis-statements, negligent or otherwise, in the report and any liability in respect of the report or any inaccuracy therein or omission therefrom which might otherwise arise is hereby expressly disclaimed. The information contained in this report is not to be taken as any recommendation made by P.T. BRI Danareksa Sekuritas or any other person to enter into any agreement with regard to any investment mentioned in this document. This report is prepared for general circulation. It does not have regard to the specific person who may receive this report. In considering any investments you should make your own independent assessment and seek your own professional financial and legal advice.