

### MOST ACTIVE GOVERNMENT BONDS

Bond	Coupon	Maturity	Last Price	Yield	Volume (IDR bn)
PBS032	4.875	15-Jul-26	99.83	7.161	2,683.05
FR0109	5.875	15-Mar-31	96.92	6.896	1,039.63
FR0068	8.375	15-Mar-34	108.40	7.155	887.11
FR0106	7.125	15-Aug-40	100.10	7.171	456.43
FR0108	6.500	15-Apr-36	97.00	7.055	339.44
FR0103	6.750	15-Jul-35	97.30	7.149	335.90
FR0104	6.500	15-Jul-30	99.20	7.092	303.43
SPN12260730	-	30-Jul-26	99.23	-	250.00
SPN12261105	-	5-Nov-26	97.40	-	250.00
FR0107	7.125	15-Aug-45	99.81	7.146	248.86

\*Current yield; Coupon, Last Price & Yield are in %; Volume is in IDR bn; Rating code: id(Pefindo) & idn (Fitch Indonesia)  
Sources: Bloomberg; Indonesia Stock Exchange (Volume)

### MOST ACTIVE CORPORATE BONDS

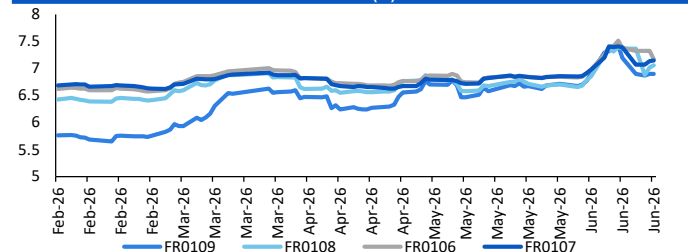
Bond	Rating	Coupon	Maturity	Last Price	Yield	Volume
PNBN04BCN4	AA	6.150	25-Feb-31	90.25	8.71	680.00
SIPOST01BCN1	A	9.750	8-Jan-30	101.64	9.20	500.00
SIJEE02A	A	7.750	19-Apr-27	99.16	7.82	495.00
SMINKP03BCN2	A+	10.250	25-Aug-26	99.25	10.33	494.10
SMFP02SOCN1	AAA	6.950	8-Jul-30	96.00	8.12	490.00
SIMORA02ACN1	A+	10.000	13-Jul-26	100.25	9.98	456.36
SMBRIS01ASLCN2	AAA	6.450	6-Jul-26	100.09	6.44	222.30
PALM03ACN3	A	7.700	19-Jun-27	99.93	7.78	218.25
ADMFO7BCN2	AAA	5.650	21-Oct-28	93.97	8.52	218.00
SMADMFO6ACN1	AAA	6.200	18-Jul-26	100.04	6.20	180.00

### SOVEREIGN BOND YIELDS

Country	Tenor	Coupon (%)	MA LTM as of			Spread over UST YC (bps)		
			19-Jun-26	19-Jun-26	19-Jun-26	19-Jun-26	May	Apr
United States	2yr		4.20	4.05	3.89			
USD	5yr		4.23	4.14	4.01			
	10yr		4.46	4.44	4.37			
German	2yr	0.25	2.63	2.53	2.64	-155	-148	-123
EUR	5yr	1.00	2.70	2.64	2.75	-153	-151	-126
	10yr	1.75	2.96	2.94	3.04	-149	-150	-134
Indonesia	2yr	3.50	-	4.18	4.20	-	18	32
USD	5yr	3.85	-	4.73	4.57	-	59	56
	10yr	6.63	-	5.50	5.35	-	106	98
Brazil	2yr	0.00	14.72	13.82	13.71	1,054	982	984
BRL	3yr	0.00	14.87	13.94	13.81	1,068	994	994
	10yr	10.00	14.60	14.12	13.98	1,042	1,012	1,010
Philippines	2yr	6.00	6.35	6.85	5.83	217	285	195
PHP	5yr	7.88	7.49	7.45	6.84	325	331	283
	10yr	11.38	7.05	7.78	7.05	259	334	267
Thailand	2yr	3.13	1.16	1.24	1.24	-302	-276	-264
THB	5yr	3.45	1.61	1.68	1.61	-263	-246	-240
	10yr	3.63	2.10	2.33	2.20	-236	-211	-218
India	2yr	7.59	6.12	6.42	6.26	194	241	239
INR	5yr	7.28	6.50	6.82	6.77	227	268	277
	10yr	8.83	6.89	7.01	7.04	243	257	266
Malaysia	3yr	3.17	3.27	3.24	3.21	-93	-82	-68
MYR	5yr	3.26	3.44	3.41	3.36	-79	-74	-65
	10yr	4.18	3.61	3.58	3.57	-85	-86	-80

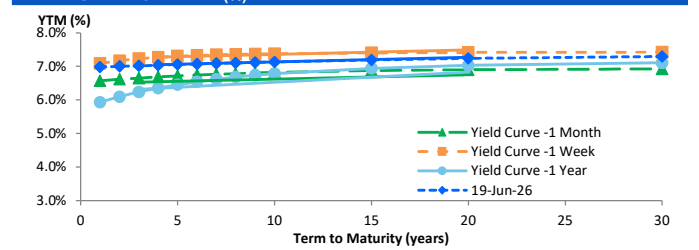
Sources: Bloomberg (Current Yield Curve), US Treasury

### YIELD OF GOVERNMENT BOND BENCHMARK (%)



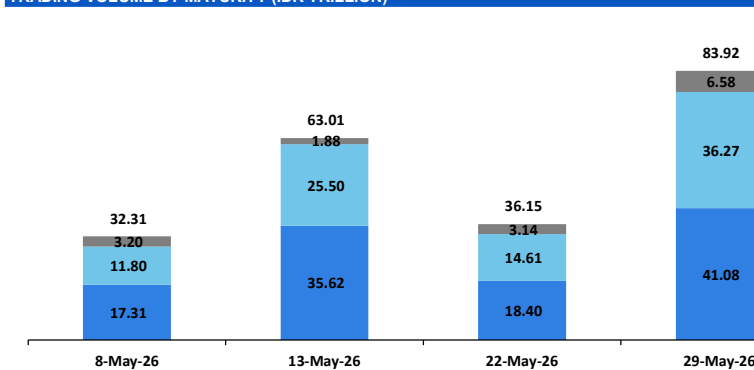
Source: Bloomberg

### YIELD CURVE MOVEMENT (%)

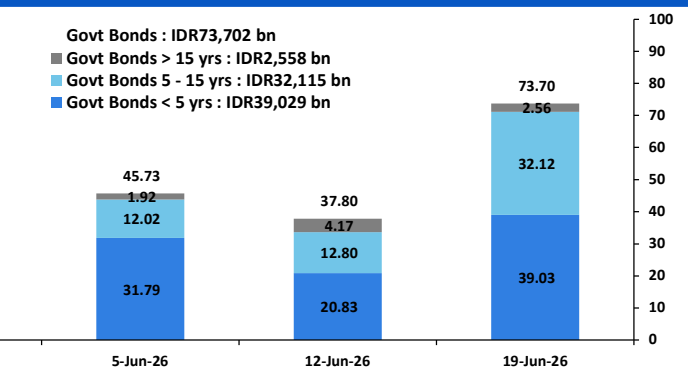


Source: Bloomberg

### TRADING VOLUME BY MATURITY (IDR TRILLION)



Sources: Indonesia Stock Exchange



### CURRENCY

Price	19-Jun-26	-1 Day	-1 Week	-1 Month	EoP2025	
DXY	100.79	↓	100.85	99.75	99.33	98.32
USD/IDR	17,790	↑	17,710	17,870	17,705	16,690
EUR/USD	1.15	↑	1.15	1.16	1.16	1.17
USD/JPY	161.29	↓	161.38	160.24	159.07	156.71
USD/CNY	6.768	→	6.768	6.763	6.814	6.988
USD/MYR	4.134	↑	4.117	4.060	3.977	4.060
SGD/IDR	13,780	↓	13,823	13,878	13,831	12,969

Source: Bloomberg

### COMMODITY

Price	19-Jun-26	-1 Day	-1 Week	-1 Month	EoP2025	
CPO (Palm Oil)	4,586	↑	4,501	4,387	4,540	3,998
Coal	144.00	→	144.00	148.90	132.40	107.50
Gold (XAU/USD)	4,165	↓	4,210	4,219	4,483	4,319
Nickel	17,700	↑	17,617	17,617	18,682	16,546
Copper	635.65	↓	638.55	644.50	616.50	568.20
Brent	79.28	↓	79.85	87.33	111.28	60.85
WTI	77.31	↑	76.60	84.88	107.77	57.42

### PHEI FAIR SPREAD

	1Y	2Y	3Y	4Y	5Y	6Y	7Y	8Y	9Y	10Y
AAA	33	39	44	48	53	57	61	63	65	67
AA+	41	44	48	52	55	59	61	63	65	66
AA	59	63	66	69	73	76	78	80	81	81
AA-	95	103	107	111	115	119	122	124	125	125
A+	144	158	164	170	176	181	185	188	189	190
A	197	218	228	236	244	252	257	261	264	265
A-	247	275	288	299	311	321	329	334	338	340
BBB+	294	329	345	360	374	387	398	406	411	415
BBB	340	380	401	419	436	452	465	476	483	489

\*interpolated, as of June 19, 2026 (bps)

Sources: PHEI, Bloomberg

### SBN HOLDING - (IDR tn)

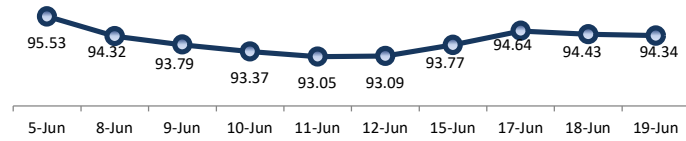
	15-Jun-2026	WoW	MoM	YTD
Banks	1,070.9	(131.5)	(154.1)	(257.8)
Bank Indonesia (exclude repo)	2,011.9	135.7	164.1	370.2
Non-Banks:				
Mutual Fund	260.1	0.1	5.7	17.2
Insurance & Pension Fund	1,417.6	15.1	27.2	127.0
Foreign Investor	869.8	0.9	6.6	(8.8)
Individual	553.3	0.7	0.5	16.0
Others	725.0	5.3	11.8	76.1
<b>Total</b>	<b>6,908.6</b>	<b>26.4</b>	<b>61.7</b>	<b>339.8</b>
Domestic Investor	4,026.9	(110.2)	(109.0)	(21.6)
Foreign Investor	869.8	0.9	6.6	(8.8)
Bank Indonesia (include repo)	1,726.3	4.4	7.0	85.7

Source: DJPPR (Processed)

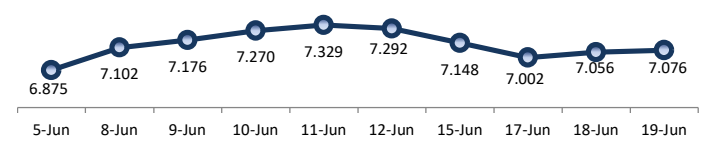
VALUATIONS OF GOVERNMENT BONDS

Bond	Issue Date	Mature Date	Coupon	TTM	Modified Duration	YTM (Change)	Prev Closing Price	Fair Yield Range		Fair Price Range		Last Trade				
												Date	Price	Vol (IDR bn)	Freq	
FR0056	23-Sep-10	15-Sep-26	8.38	0.2	0.23	6.61 <span style="color: green;">↑ 9.5bps</span>	100.36	6.372	6.772	100.34	100.44	19-Jun-26	100.22	238.02	20	
FR0090	8-Jul-21	15-Apr-27	5.13	0.8	0.78	7.07 <span style="color: green;">↑ 6.0bps</span>	98.48	6.865	7.140	98.41	98.62	19-Jun-26	99.70	169.06	100	
FR0059	15-Sep-11	15-May-27	7.00	0.9	0.86	7.02 <span style="color: green;">↓ -0.2bps</span>	99.98	6.861	7.236	99.79	100.11	19-Jun-26	100.60	152.60	33	
FR0042	25-Jan-07	15-Jul-27	10.25	1.1	0.97	6.98 <span style="color: green;">↓ -1.9bps</span>	103.29	6.749	7.149	103.14	103.55	18-Jun-26	103.90	0.02	4	
FR0094	4-Mar-22	15-Jan-28	5.60	1.6	1.44	7.18 <span style="color: green;">↓ -0.9bps</span>	97.71	6.897	7.297	97.52	98.09	15-Jun-26	100.00	0.05	1	
FR0047	30-Aug-07	15-Feb-28	10.00	1.7	1.47	7.12 <span style="color: green;">↓ 3.0bps</span>	104.39	6.797	7.178	104.32	104.92	19-Jun-26	103.45	0.01	2	
FR0064	13-Aug-12	15-May-28	6.13	1.9	1.76	6.91 <span style="color: green;">→ 0.0bps</span>	98.63	6.836	7.098	98.29	98.74	19-Jun-26	99.40	37.06	68	
FR0095	19-Aug-22	15-Aug-28	6.38	2.2	1.94	7.00 <span style="color: green;">↓ -0.5bps</span>	98.76	6.813	7.109	98.54	99.12	19-Jun-26	99.45	75.31	37	
FR0099	27-Jan-23	15-Jan-29	6.40	2.6	2.26	7.20 <span style="color: green;">↓ 3.3bps</span>	98.14	6.658	7.058	98.47	99.39	15-Jun-26	93.75	23.89	2	
FR0071	12-Sep-13	15-Mar-29	9.00	2.7	2.36	6.98 <span style="color: green;">↑ 1.2bps</span>	104.91	6.785	7.097	104.64	105.43	19-Jun-26	104.62	134.92	9	
FR0101	2-Nov-23	15-Apr-29	8.88	2.8	2.50	7.00 <span style="color: green;">↓ -1.4bps</span>	99.68	6.817	7.087	99.45	100.13	19-Jun-26	99.65	240.00	33	
FR0078	27-Sep-18	15-May-29	6.25	2.9	2.54	7.04 <span style="color: green;">↓ -1.8bps</span>	103.11	6.843	7.147	102.84	103.64	19-Jun-26	103.01	45.58	23	
FR0104	22-Aug-24	15-Jul-30	6.50	4.1	3.42	7.09 <span style="color: green;">↑ 2.3bps</span>	97.94	6.929	7.191	97.59	98.49	19-Jun-26	99.20	303.43	53	
FR0052	20-Aug-09	15-Aug-30	10.50	4.2	3.30	7.05 <span style="color: green;">↑ 7.0bps</span>	112.21	6.658	7.058	112.20	113.74	19-Jun-26	112.30	2.60	3	
FR0082	1-Aug-19	15-Sep-30	7.00	4.2	3.55	6.98 <span style="color: green;">↑ 5.5bps</span>	100.07	6.836	7.104	99.61	100.58	19-Jun-26	99.00	43.94	39	
FRSDG001	27-Oct-22	15-Oct-30	7.38	4.3	3.62	6.63 <span style="color: green;">↑ 1.0bps</span>	102.74	6.551	6.951	101.55	103.04	10-Jun-26	100.04	10.00	1	
FR0087	13-Aug-20	15-Feb-31	6.50	4.7	3.86	7.08 <span style="color: green;">↑ 9.3bps</span>	97.74	6.889	7.233	97.13	98.46	19-Jun-26	97.38	35.87	56	
<b>FR0109</b>	<b>15-Aug-25</b>	<b>15-Mar-31</b>	<b>5.88</b>	<b>4.7</b>	<b>3.99</b>	<b>6.90</b>	<b>0.0bps</b>	<b>95.92</b>	<b>6.799</b>	<b>7.199</b>	<b>94.75</b>	<b>96.30</b>	<b>19-Jun-26</b>	<b>96.92</b>	<b>1,039.63</b>	<b>95</b>
FR0085	4-May-20	15-Apr-31	7.75	4.8	3.94	7.05 <span style="color: green;">↑ 1.1bps</span>	102.79	6.610	7.010	102.97	104.63	19-Jun-26	102.60	0.18	4	
FR0073	6-Aug-15	15-May-31	8.75	4.9	3.96	6.98 <span style="color: green;">↓ 3.2bps</span>	107.22	6.750	7.150	106.51	108.23	19-Jun-26	106.50	1.00	2	
FR0054	22-Jul-10	15-Jul-31	9.50	5.1	3.91	6.95 <span style="color: green;">↓ -0.2bps</span>	110.73	6.724	7.124	109.96	111.76	19-Jun-26	110.40	2.14	3	
FR0091	8-Jul-21	15-Apr-32	6.38	5.8	4.72	6.92 <span style="color: green;">→ 0.0bps</span>	97.39	6.844	7.244	95.92	97.77	19-Jun-26	94.68	14.22	31	
FR0058	21-Jul-11	15-Jun-32	8.25	6.0	4.71	7.04 <span style="color: green;">→ 0.0bps</span>	105.85	6.925	7.241	104.83	106.40	19-Jun-26	104.80	15.05	3	
FR0074	10-Nov-16	15-Aug-32	7.50	6.2	4.77	6.93 <span style="color: green;">↓ -0.5bps</span>	102.79	6.819	7.219	101.36	103.37	19-Jun-26	99.68	5.01	12	
FR0096	19-Aug-22	15-Feb-33	7.00	6.7	5.12	7.07 <span style="color: green;">↑ 1.6bps</span>	99.64	6.870	7.270	98.58	100.67	19-Jun-26	99.40	107.04	50	
FR0065	30-Aug-12	15-May-33	6.63	6.9	5.40	7.16 <span style="color: green;">↓ -1.2bps</span>	97.11	6.826	7.226	96.77	98.90	19-Jun-26	97.55	163.62	38	
FR0100	24-Aug-23	15-Feb-34	6.63	7.7	5.76	7.15 <span style="color: green;">↑ 5.6bps</span>	96.92	6.871	7.271	96.25	98.54	19-Jun-26	95.29	175.74	71	
FR0068	1-Aug-13	15-Mar-34	8.38	7.7	5.61	7.16 <span style="color: green;">↑ 8.6bps</span>	107.13	6.895	7.269	106.44	108.75	19-Jun-26	108.40	887.11	29	
FR0080	4-Jul-19	15-Jun-35	7.50	9.0	6.50	7.02 <span style="color: green;">→ 0.0bps</span>	103.17	6.941	7.270	101.50	103.69	19-Jun-26	101.00	75.67	39	
FR0103	29-Jul-25	15-Jul-35	6.75	9.1	6.47	7.15 <span style="color: green;">↑ 5.8bps</span>	97.37	6.901	7.301	96.38	98.99	19-Jun-26	97.30	335.90	47	
<b>FR0108</b>	<b>31-Jul-25</b>	<b>15-Apr-36</b>	<b>6.50</b>	<b>9.8</b>	<b>7.02</b>	<b>7.06</b>	<b>5.0bps</b>	<b>96.10</b>	<b>6.859</b>	<b>7.259</b>	<b>94.72</b>	<b>97.45</b>	<b>19-Jun-26</b>	<b>97.00</b>	<b>339.44</b>	<b>66</b>
FR0072	9-Jul-15	15-May-36	8.25	9.9	6.78	7.15 <span style="color: green;">↑ 10.2bps</span>	107.68	6.876	7.276	106.78	109.74	19-Jun-26	107.10	110.41	17	
FR0088	7-Jan-21	15-Jun-36	6.25	10.0	7.23	7.11 <span style="color: green;">↑ 8.4bps</span>	93.91	6.889	7.289	92.72	95.44	19-Jun-26	96.10	17.32	32	
FR0045	24-May-07	15-May-37	9.75	10.9	6.99	7.20 <span style="color: green;">↓ -0.8bps</span>	119.01	6.861	7.261	118.51	121.91	11-Jun-26	115.56	5.00	1	
FR0093	6-Jan-22	15-Jul-37	6.38	11.1	7.51	7.15 <span style="color: green;">↑ 3.5bps</span>	94.14	6.856	7.257	93.36	96.30	19-Jun-26	96.30	35.30	27	
FR0075	10-Aug-17	15-May-38	7.50	11.9	7.80	7.15 <span style="color: green;">↑ 1.9bps</span>	102.73	6.880	7.280	101.72	104.97	19-Jun-26	101.50	28.50	13	
FR0098	15-Sep-22	15-Jun-38	7.13	12.0	7.95	7.19 <span style="color: green;">↑ 6.2bps</span>	99.49	7.041	7.345	98.27	100.67	19-Jun-26	101.00	144.53	54	
FR0050	24-Jan-08	15-Jul-38	10.50	12.1	7.17	7.15 <span style="color: green;">↓ -3.5bps</span>	126.74	6.944	7.304	125.34	128.73	17-Jun-26	127.40	0.00	2	
FR0079	7-Jan-19	15-Apr-39	8.38	12.8	7.92	7.24 <span style="color: green;">↑ 3.9bps</span>	109.34	7.113	7.312	108.73	110.48	19-Jun-26	109.45	77.09	11	
FR0083	7-Nov-19	15-Apr-40	7.50	13.8	8.48	7.24 <span style="color: green;">↑ 1.7bps</span>	102.26	7.063	7.376	101.05	103.80	19-Jun-26	104.05	7.99	27	
<b>FR0106</b>	<b>9-Jan-25</b>	<b>15-Aug-40</b>	<b>7.13</b>	<b>14.2</b>	<b>8.61</b>	<b>7.17</b>	<b>↓ -15.2bps</b>	<b>99.59</b>	<b>7.034</b>	<b>7.388</b>	<b>97.70</b>	<b>100.79</b>	<b>19-Jun-26</b>	<b>100.10</b>	<b>456.43</b>	<b>85</b>
FR0057	21-Apr-11	15-May-41	9.50	14.9	8.49	7.22 <span style="color: green;">↑ 0.2bps</span>	120.57	6.893	7.293	119.85	124.04	12-Jun-26	120.40	0.20	2	
FR0062	9-Feb-12	15-Apr-42	6.38	15.8	9.48	7.19 <span style="color: green;">↑ 2.7bps</span>	92.38	7.056	7.362	90.85	93.56	19-Jun-26	90.44	9.94	17	
FR0092	8-Jul-21	15-Jun-42	7.13	16.0	9.42	7.20 <span style="color: green;">↑ 2.4bps</span>	99.27	7.016	7.339	98.01	101.04	19-Jun-26	99.90	25.63	52	
FR0097	19-Aug-22	15-Jun-43	7.13	17.0	9.73	7.19 <span style="color: green;">↑ 3.6bps</span>	99.34	7.072	7.303	98.28	100.52	19-Jun-26	97.75	55.59	44	
FR0067	18-Jul-13	15-Feb-44	8.75	17.7	9.27	7.24 <span style="color: green;">↓ -0.4bps</span>	114.90	7.018	7.418	112.98	117.36	17-Jun-26	114.75	6.00	2	
<b>FR0107</b>	<b>9-Jan-25</b>	<b>15-Aug-45</b>	<b>7.13</b>	<b>19.2</b>	<b>10.11</b>	<b>7.15</b>	<b>↑ 1.3bps</b>	<b>99.77</b>	<b>7.008</b>	<b>7.402</b>	<b>97.17</b>	<b>101.21</b>	<b>19-Jun-26</b>	<b>99.81</b>	<b>248.86</b>	<b>51</b>
FR0076	22-Sep-17	15-May-48	7.38	21.9	10.76	7.29 <span style="color: green;">↓ -6.6bps</span>	100.95	7.167	7.412	99.59	102.27	19-Jun-26	100.45	18.44	46	
FR0089	7-Jan-21	15-Aug-51	6.88	25.2	11.32	7.27 <span style="color: green;">↓ -7.2bps</span>	95.49	7.245	7.395	94.09	95.73	19-Jun-26	96.85	30.37	93	
FR0102	5-Jan-24	15-Jul-54	6.88	28.1	11.61	7.33 <span style="color: green;">↑ 13.6bps</span>	94.57	7.216	7.464	93.11	95.92	19-Jun-26	97.50	53.71	61	
FR0105	27-Aug-24	15-Jul-64	6.88	38.1	13.03	6.90 <span style="color: green;">→ 0.0bps</span>	99.73	7.026	7.426	93.03	98.00	14-Apr-25	99.00	0.10	1	
ORI024T6	8-Nov-23	15-Oct-29	6.35	3.3	-	7.02 <span style="color: green;">↑ 4.6bps</span>	98.02	6.609	7.009	98.05	99.23	19-Jun-26	96.31	6.55	10	
ORI025T6	28-Feb-24	15-Feb-30	6.40	3.7	-	6.94 <span style="color: green;">→ 0.0bps</span>	98.26	6.530	6.930	98.29	99.58	19-Jun-26	100.00	2.16	13	
ORI026T6	30-Oct-24	15-Oct-30	6.40	4.3	-	7.07 <span style="color: green;">↓ -9.7bps</span>	97.53	6.670	7.070	97.51	98.99	19-Jun-26	99.50	0.41	12	
PBS003	2-Feb-12	15-Jan-27	6.00	0.6	0.54	6.90 <span style="color: green;">↑ 4.4bps</span>	99.51	6.554	6.954	99.47	99.69	19-Jun-26	100.05	124.61	80	
PBS020	22-Oct-18	15-Oct-27	9.00	1.3	1.22	6.54 <span style="color: green;">↑ 2.1bps</span>	103.03	6.309	5.709	104.12	104.64	31-Jul-24	108.25	0.50	1	
PBS018	4-Jun-18	15-May-28	7.63	1.9	1.74	6.59 <span style="color: green;">↑ 1.4bps</span>	101.80	6.156	6.556	101.88	102.59	3-Sep-19	99.29	2,000.00	2	
<b>PBS030</b>	<b>4-Jun-21</b>	<b>15-Jul-28</b>	<b>5.88</b>	<b>2.1</b>	<b>1.87</b>	<b>6.65</b>	<b>↑ 0.1bps</b>	<b>98.53</b>	<b>6.636</b>	<b>7.037</b>	<b>97.79</b>	<b>98.54</b>	<b>19-Jun-26</b>	<b>97.40</b>	<b>146.98</b>	<b>224</b>
PBSG001	22-Sep-22	15-Sep-29	6.63	3.2	2.83	6.68 <span style="color: green;">↑ 4.7bps</span>	99.84	6.472	6.872	99.28	100.43	19-Jun-26	100.10	0.40	1	
IFR0006	1-Apr-10	15-Mar-30	10.25	3.7	3.06	6.6										

PRICE INDEX



YIELD INDEX



TECHNICAL ANALYSIS

FR0109

INDICATORS	19-Jun-26	-1 Day	Change
Last Price	95.92	95.92	0.00
DI+	34.45	35.18	(0.73)
DI-	40.80	41.66	(0.86)
ADX (15D)	38.02	40.13	(2.11)
A/D	-21,343.25	-22,579.26	1,236.01
CMF(20D)	-0.324	-0.322	(0.00)
CCI	4.31	1.68	2.63
Volume (IDR bn)	1,039.63	1,141.86	(102.22)
Frequency	95	81	14

COMMENT

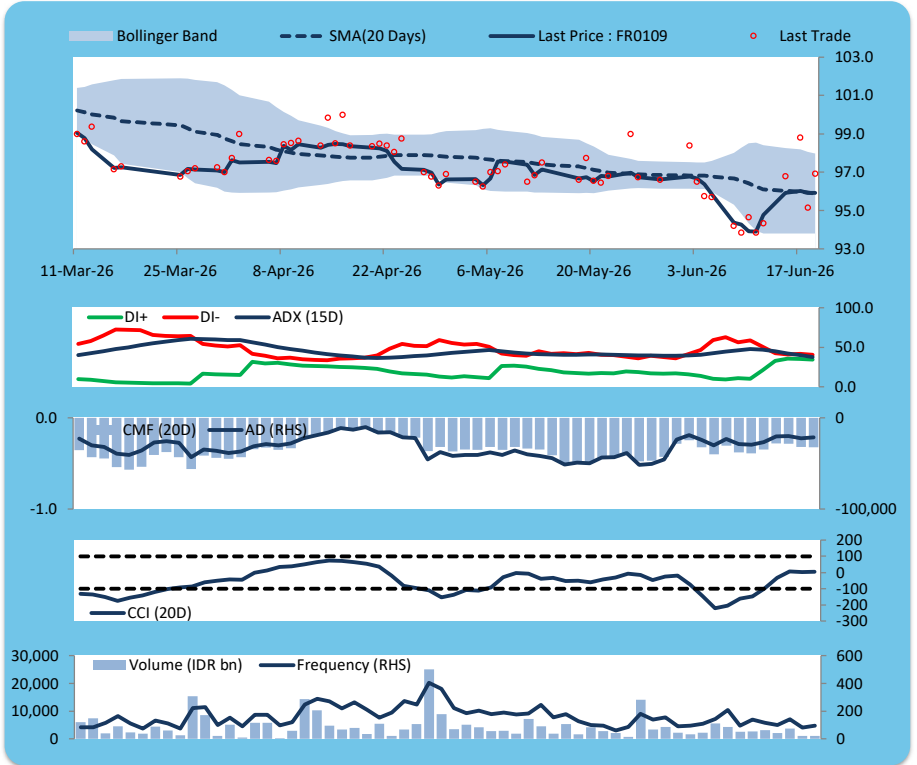
Price increased slightly; heavy trade volume; upward trend continues to strengthen; selling pressure increased; CCI increased.

HOLD

FEATURES

Issue Date	14-Aug-25
Mature Date	15-Mar-31
Tenor	4.7
Coupon Rate	5.88
Last Yield	6.89
Modified Duration	3.99
Previous Coupon Date	15-Mar-26
Next Coupon Date	15-Sep-26

Sources: Bloomberg (Price); IDX



FR0108

INDICATORS	19-Jun-26	-1 Day	Change
Last Price	96.08	96.40	(0.32)
DI+	32.46	33.89	(1.43)
DI-	48.60	46.33	2.27
ADX (15D)	32.10	32.97	(0.87)
A/D	-10,483.08	-10,271.62	(211.46)
CMF(20D)	-0.271	-0.255	(0.02)
CCI	-28.88	-10.83	(18.05)
Volume (IDR bn)	339.44	1,435.36	(1,095.92)
Frequency	66	91	(25)

COMMENT

Price declined; moderate trade volume; downward trend continues to weaken; selling pressure increased; CCI declined.

SELL

FEATURES

Issue Date	31-Jul-25
Mature Date	15-Apr-36
Tenor	9.8
Coupon Rate	6.50
Last Yield	7.06
Modified Duration	7.02
Previous Coupon Date	15-Apr-26
Next Coupon Date	15-Oct-26

Sources: Bloomberg (Price); IDX



FR0106

INDICATORS	19-Jun-26	-1 Day	Change
Last Price	99.57	98.26	1.32
DI+	24.83	12.63	12.20
DI-	46.34	53.87	(7.52)
ADX (15D)	42.01	42.85	(0.84)
A/D	-3,967.79	-4,153.25	185.46
CMF(20D)	-0.178	-0.174	(0.00)
CCI	-25.12	-73.27	48.14
Volume (IDR bn)	456.43	203.15	253.29
Frequency	85	100	(15)

COMMENT

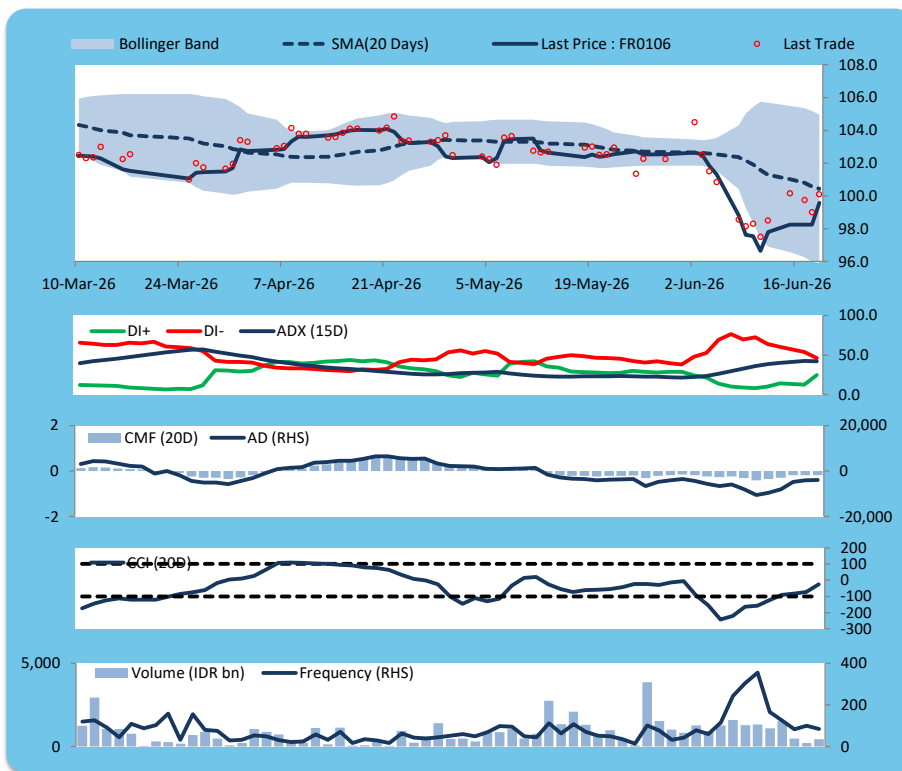
Price increased; moderate trade volume; upward trend continues to weaken; selling pressure increased; CCI increased.

BUY

FEATURES

Issue Date	9-Jan-25
Mature Date	15-Aug-40
Tenor	14.2
Coupon Rate	7.13
Last Yield	7.17
Modified Duration	8.61
Previous Coupon Date	15-Feb-26
Next Coupon Date	15-Aug-26

Sources: Bloomberg (Price); IDX



FR0107

INDICATORS	19-Jun-26	-1 Day	Change
Last Price	99.77	99.92	(0.14)
DI+	26.70	27.57	(0.87)
DI-	36.67	36.89	(0.23)
ADX (15D)	37.71	39.28	(1.57)
A/D	-2,398.12	-3,017.37	619.25
CMF(20D)	-0.156	-0.184	0.03
CCI	-29.73	-21.04	(8.69)
Volume (IDR bn)	248.86	577.01	(328.15)
Frequency	51	28	23

COMMENT

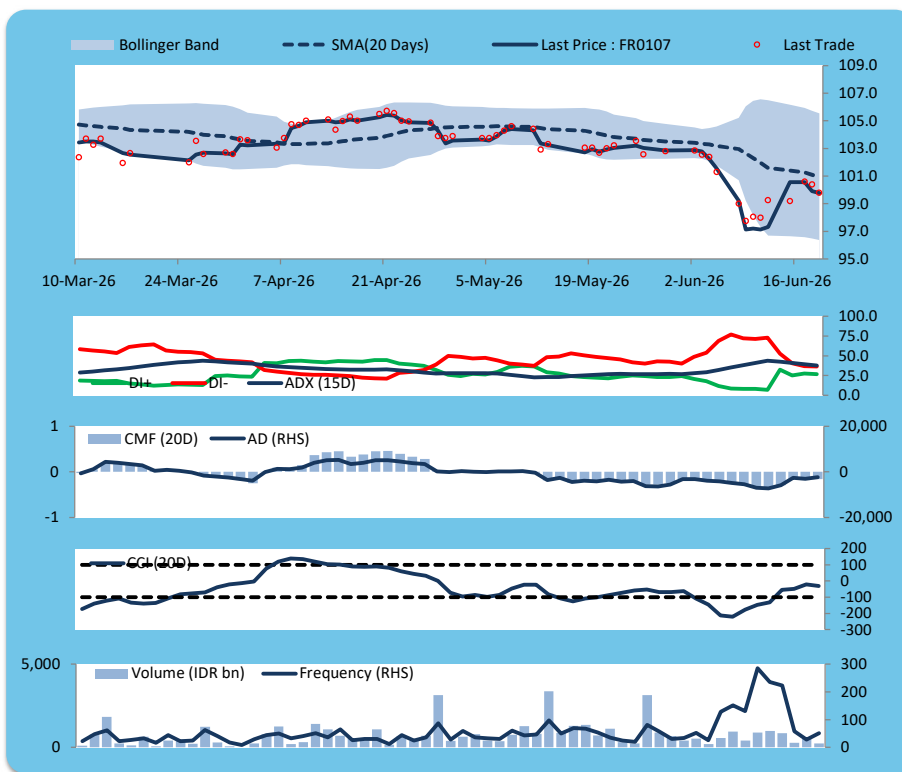
Price declined; moderate trade volume; downward trend continues to weaken; selling pressure eased; CCI declined.

SELL

FEATURES

Issue Date	9-Jan-25
Mature Date	15-Aug-45
Tenor (year)	19.2
Coupon Rate	7.13
Last Yield	7.15
Modified Duration	10.11
Previous Coupon Date	15-Feb-26
Next Coupon Date	15-Aug-26

Sources: Bloomberg (Price); IDX



**ECONOMIC AND FIXED INCOME RESEARCH TEAM****Chief Economist and Head Fixed Income Research**

Helmy Kristanto	helmy.kristanto@brids.co.id	(62-21) 5091 4100 ext. 3400
-----------------	-----------------------------	-----------------------------

**Economists**

Relindya Yuriswari Salehaningtyas	relindya.salehaningtyas@brids.co.id	(62-21) 5091 4100 ext. 3609
Ebenezer Mesotuhu Harefa	ebenezer.harefa@brids.co.id	(62-21) 5091 4100 ext. 3609

**Credit Analyst**

Laras Nerpatari Suliyas	laras.nerpatari@brids.co.id	(62-21) 5091 4100 ext. 3403
-------------------------	-----------------------------	-----------------------------

**Production & Database Management**

Eka Nuraini	ekan@brids.co.id	(62-21) 5091 4100 ext. 3407
Faiqul Kurnia Muslim	faiqul.muslim@brids.co.id	(62-21) 5091 4100 ext. 3402

**INSTITUTIONAL DEBT SALES & TRADING TEAM****Head of Debt Capital Market**

Yopi Chandra Wardhani	yopi.wardhani@brids.co.id	(62-21) 5091 4100 ext. 3220
-----------------------	---------------------------	-----------------------------

**Debt Sales**

Rachmat Eko Putranto	rachmat.putranto@brids.co.id	(62-21) 5091 4100 ext. 3218
Rafi Utama Soeriaatmadja	rafi.soeriaatmadja@brids.co.id	(62-21) 5091 4100 ext. 3926
Adzkia Zahra	adzkia.zahra@brids.co.id	(62-21) 5091 4100 ext. 3924

**Debt Brokerage**

Citra Isramij P.	citra.isramij@brids.co.id	(62-21) 5091 4100 ext. 3228
Sisca Emilia	sisca.emilia@brids.co.id	(62-21) 5091 4100 ext. 3921
Deviano Sujitno	deviano.sujitno@brids.co.id	(62-21) 5091 4100 ext. 3925

**DISCLAIMER:** The information contained in this report has been taken from sources which we deem reliable. However, none of P.T. BRI Danareksa Sekuritas and/or its affiliated companies and/or their respective employees and/or agents makes any representation or warranty (express or implied) or accepts any responsibility or liability as to, or in relation to, the accuracy or completeness of the information and opinions contained in this report or as to any information contained in this report or any other such information or opinions remaining unchanged after the issue thereof. We expressly disclaim any responsibility or liability (express or implied) of P.T. BRI Danareksa Sekuritas, its affiliated companies and their respective employees and agents whatsoever and howsoever arising (including, without limitation for any claims, proceedings, action, suits, losses, expenses, damages or costs) which may be brought against or suffered by any person as a result of acting in reliance upon the whole or any part of the contents of this report and neither P.T. BRI Danareksa Sekuritas, its affiliated companies or their respective employees or agents accepts liability for any errors, omissions or mis-statements, negligent or otherwise, in the report and any liability in respect of the report or any inaccuracy therein or omission therefrom which might otherwise arise is hereby expressly disclaimed. The information contained in this report is not to be taken as any recommendation made by P.T. BRI Danareksa Sekuritas or any other person to enter into any agreement with regard to any investment mentioned in this document. This report is prepared for general circulation. It does not have regard to the specific person who may receive this report. In considering any investments you should make your own independent assessment and seek your own professional financial and legal advice.