

### MOST ACTIVE GOVERNMENT BONDS

Bond	Coupon	Maturity	Last Price	Yield	Volume (IDR bn)
FR0109	5.875	15-Mar-31	98.80	6.848	3,730.02
PBS030	5.880	15-Jul-28	97.73	7.073	2,948.92
FR0104	6.500	15-Jul-30	100.65	6.933	2,346.65
PBS034	6.500	15-Jun-39	94.16	6.974	1,431.10
FR0108	6.500	15-Apr-36	99.35	6.877	1,315.76
PBSG002	5.625	15-Oct-33	91.41	6.612	1,262.80
FR0056	8.375	15-Sep-26	100.35	6.499	870.13
FR0101	6.875	15-Apr-29	99.95	6.921	750.15
PBS040	5.000	15-Nov-30	92.32	6.960	712.81
PBS038	6.875	15-Dec-49	96.20	7.165	645.48

Coupon, Last Price & Yield are in %; Volume is in IDR bn; Rating code: id(Pefindo) & idn (Fitch Indonesia)  
Sources: Bloomberg; Indonesia Stock Exchange (Volume)

### MOST ACTIVE CORPORATE BONDS

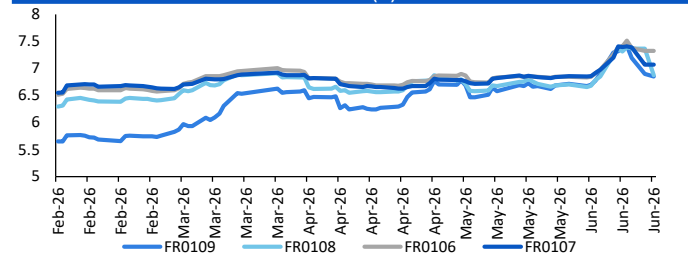
Bond	Rating	Coupon	Maturity	Last Price	Yield	Volume
SMBMA01ACN2	A	7.500	27-Aug-26	98.83	7.59	345.46
LPPI03ACN1	A	10.500	4-Oct-27	100.45	10.12	270.60
TAFS05BCN2	AAA	5.900	11-Nov-30	92.25	8.01	250.00
DART04BCN1	A-	10.500	2-Jul-28	102.21	9.30	229.30
BOLD03B	A+	8.000	10-Oct-28	95.79	10.06	217.00
SIBAL01BCN3	A	7.250	5-Dec-28	98.56	7.90	205.00
TPIA05BCN2	AA-	7.000	25-Feb-31	88.11	10.22	200.00
TBIG06BCN4	AA+	6.750	3-Dec-27	100.00	6.75	199.21
LTL04CN1	A	8.750	4-Jul-27	97.87	10.92	180.00
TBIG07CCN3	AA+	6.000	12-Feb-31	86.60	9.60	180.00

### SOVEREIGN BOND YIELDS

Country	Tenor	Coupon (%)	17-Jun-26		MA LTM as of		Spread over UST YC (bps)		
			17-Jun-26	MA LTM as of May	MA LTM as of Apr	17-Jun-26	May	Apr	
United States	2yr		4.09	4.05	3.89				
USD	5yr		4.16	4.14	4.01				
	10yr		4.43	4.44	4.37				
German	2yr	0.25	2.57	2.53	2.64	-148	-148	-123	
EUR	5yr	1.00	2.64	2.64	2.75	-151	-151	-126	
	10yr	1.75	2.92	2.94	3.04	-151	-150	-134	
Indonesia	2yr	3.50	-	4.18	4.20	-	18	32	
USD	5yr	3.85	-	4.73	4.57	-	59	56	
	10yr	6.63	-	5.50	5.35	-	106	98	
Brazil	2yr	0.00	14.39	13.82	13.71	1,034	982	984	
BRL	3yr	0.00	14.47	13.94	13.81	1,043	994	994	
	10yr	10.00	14.29	14.12	13.98	1,025	1,012	1,010	
Philippines	2yr	6.00	6.23	6.85	5.83	219	285	195	
PHP	5yr	7.88	7.49	7.45	6.84	333	331	283	
	10yr	11.38	7.05	7.78	7.05	262	334	267	
Thailand	2yr	3.13	1.14	1.24	1.24	-291	-276	-264	
THB	5yr	3.45	1.57	1.68	1.61	-258	-246	-240	
	10yr	3.63	2.08	2.33	2.20	-235	-211	-218	
India	2yr	7.59	6.11	6.42	6.26	206	241	239	
INR	5yr	7.28	6.48	6.82	6.77	232	268	277	
	10yr	8.83	6.88	7.01	7.04	245	257	266	
Malaysia	3yr	3.17	3.26	3.24	3.21	-83	-82	-68	
MYR	5yr	3.26	3.44	3.41	3.36	-72	-74	-65	
	10yr	4.18	3.60	3.58	3.57	-84	-86	-80	

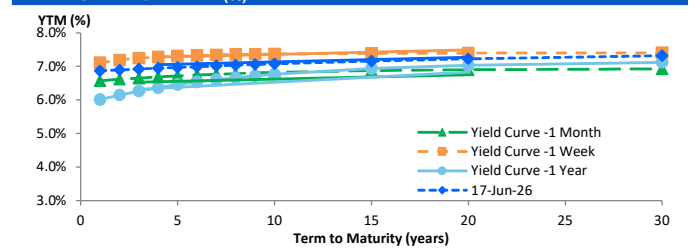
Sources: Bloomberg (Current Yield Curve), US Treasury

### YIELD OF GOVERNMENT BOND BENCHMARK (%)



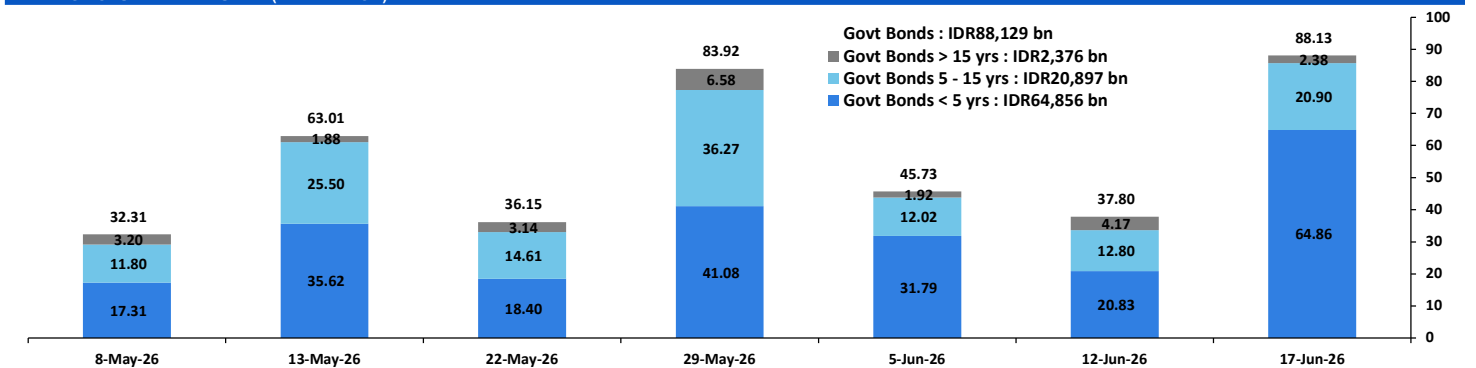
Source: Bloomberg

### YIELD CURVE MOVEMENT (%)



Source: Bloomberg

### TRADING VOLUME BY MATURITY (IDR TRILLION)



Sources: Indonesia Stock Exchange

### CURRENCY

Price	17-Jun-26	-1 Day	-1 Week	-1 Month	EoP2025
DX	99.58	↓	99.63	99.95	99.28
USD/IDR	17,738	↑	17,703	17,953	16,690
EUR/USD	1.16	↑	1.16	1.15	1.17
USD/JPY	160.18	↓	160.34	160.55	158.74
USD/CNY	6.758	→	6.758	6.775	6.813
USD/MYR	4.070	↑	4.051	4.070	3.957
SGD/IDR	13,850	↑	13,814	13,927	12,969

Source: Bloomberg

### COMMODITY

Price	17-Jun-26	-1 Day	-1 Week	-1 Month	EoP2025
CPO (Palm Oil)	4,501	↑	4,387	4,450	4,380
Coal	144.50	↓	146.35	150.95	131.70
Gold (XAU/USD)	4,327	↑	4,312	4,072	4,540
Nickel	17,846	↑	17,478	17,458	18,307
Copper	653.10	↓	649.60	626.70	625.15
Brent	78.79	↓	83.17	93.10	109.26
WTI	75.81	↓	80.75	90.03	105.42

### PHEI FAIR SPREAD

	1Y	2Y	3Y	4Y	5Y	6Y	7Y	8Y	9Y	10Y
AAA	31	39	44	49	53	57	60	62	64	65
AA+	39	45	50	54	57	59	61	63	64	65
AA	57	64	69	72	74	76	78	79	80	81
AA-	94	105	110	114	117	119	121	123	124	125
A+	144	161	168	172	177	181	184	187	189	190
A	197	222	231	238	244	250	256	260	263	265
A-	248	279	292	301	310	319	327	333	338	341
BBB+	296	333	349	362	375	387	397	405	411	415
BBB	342	384	404	421	438	453	466	477	485	490

\*interpolated, as of June 17, 2026 (bps)

Sources: PHEI, Bloomberg

### SBN HOLDING - (IDR tn)

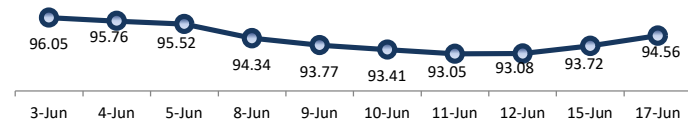
	12-Jun-2026	WoW	MoM	YTD
Banks	1,127.1	(118.3)	(97.8)	(201.5)
Bank Indonesia (exclude repo)	1,959.2	124.9	111.4	317.5
Non-Banks:				
Mutual Fund	260.2	0.3	5.8	17.3
Insurance & Pension Fund	1,417.1	15.2	26.7	126.5
Foreign Investor	867.6	(2.4)	4.3	(11.1)
Individual	552.7	(0.1)	(0.2)	15.3
Others	724.8	6.8	11.5	75.9
<b>Total</b>	<b>6,908.6</b>	<b>26.4</b>	<b>61.7</b>	<b>339.8</b>
Domestic Investor	4,081.9	(96.2)	(54.0)	33.4
Foreign Investor	867.6	(2.4)	4.3	(11.1)
Bank Indonesia (include repo)	1,726.3	4.1	7.0	85.7

Source: DJPPR (Processed)

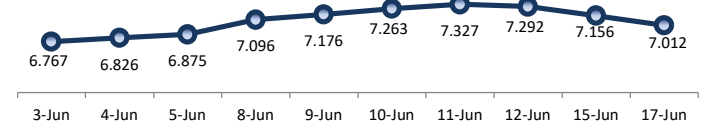
VALUATIONS OF GOVERNMENT BONDS

Bond	Issue Date	Mature Date	Coupon	TTM	Modified Duration	YTM (Change)	Prev Closing Price	Fair Yield Range		Fair Price Range		Last Trade				
												Date	Price	Vol (IDR bn)	Freq	
FR0056	23-Sep-10	15-Sep-26	8.38	0.2	0.24	6.50	↓ -14.1bps	100.41	6.234	6.675	100.37	100.48	17-Jun-26	100.35	870.13	20
FR0090	8-Jul-21	15-Apr-27	5.13	0.8	0.79	6.88	↓ -24.9bps	98.61	6.731	7.024	98.49	98.72	17-Jun-26	99.70	150.56	86
FR0059	15-Sep-11	15-May-27	7.00	0.9	0.86	7.06	→ 0.0bps	99.94	6.725	7.136	99.87	100.23	17-Jun-26	101.30	281.20	77
FR0042	25-Jan-07	15-Jul-27	10.25	1.1	0.97	6.99	↓ -7.5bps	103.30	6.606	7.047	103.26	103.72	15-Jun-26	104.65	0.95	1
FR0094	4-Mar-22	15-Jan-28	5.60	1.6	1.44	7.07	↓ -11.8bps	97.85	6.129	6.570	98.56	99.21	15-Jun-26	100.00	0.05	1
FR0047	30-Aug-07	15-Feb-28	10.00	1.7	1.48	7.07	↓ -5.9bps	104.49	6.684	7.048	104.54	105.12	17-Jun-26	106.27	0.13	8
FR0064	13-Aug-12	15-May-28	6.13	1.9	1.76	6.88	↓ -13.4bps	98.67	6.737	6.997	98.46	98.91	17-Jun-26	99.25	483.50	72
FR0095	19-Aug-22	15-Aug-28	6.38	2.2	1.94	6.94	↓ -4.1bps	98.88	6.683	7.007	98.74	99.38	17-Jun-26	98.97	429.93	26
FR0099	27-Jan-23	15-Jan-29	6.40	2.6	2.27	7.13	↓ -9.2bps	98.30	6.477	6.918	98.79	99.81	15-Jun-26	93.75	23.89	2
FR0071	12-Sep-13	15-Mar-29	9.00	2.7	2.37	6.86	↓ -3.7bps	105.25	6.683	6.992	104.92	105.71	17-Jun-26	105.50	90.79	9
FR0101	2-Nov-23	15-Apr-29	8.88	2.8	2.50	6.92	↓ -8.8bps	99.87	6.709	6.981	99.72	100.41	17-Jun-26	99.95	750.15	50
FR0078	27-Sep-18	15-May-29	8.25	2.9	2.55	6.95	↓ -6.9bps	103.36	6.730	7.042	103.12	103.95	17-Jun-26	104.40	18.10	11
FR0104	22-Aug-24	15-Jul-30	6.50	4.1	3.43	6.93	↓ -34.6bps	98.48	6.826	7.101	97.90	98.85	17-Jun-26	100.65	2,346.65	40
FR0052	20-Aug-09	15-Aug-30	10.50	4.2	3.30	6.95	↓ -33.7bps	112.60	6.538	6.976	112.52	114.22	17-Jun-26	112.79	0.00	1
FR0082	1-Aug-19	15-Sep-30	7.00	4.2	3.56	6.94	↓ -30.3bps	100.22	6.747	7.019	99.91	100.91	17-Jun-26	100.28	191.15	78
FRSDG001	27-Oct-22	15-Oct-30	7.38	4.3	3.63	6.63	↓ -1.1bps	102.75	6.485	6.926	101.64	103.30	10-Jun-26	100.04	10.00	1
FR0087	13-Aug-20	15-Feb-31	6.50	4.7	3.87	6.87	↓ -45.6bps	98.53	6.801	7.151	97.44	98.80	17-Jun-26	100.00	74.04	52
<b>FR0109</b>	<b>15-Aug-25</b>	<b>15-Mar-31</b>	<b>5.88</b>	<b>4.7</b>	<b>4.00</b>	<b>6.85</b>	<b>↓ -4.7bps</b>	<b>96.11</b>	<b>6.704</b>	<b>7.145</b>	<b>94.95</b>	<b>96.67</b>	<b>17-Jun-26</b>	<b>98.80</b>	<b>3,730.02</b>	<b>141</b>
FR0085	4-May-20	15-Apr-31	7.75	4.8	3.94	6.96	↓ -33.1bps	103.18	6.485	6.926	103.32	105.16	17-Jun-26	104.95	0.20	2
FR0073	6-Aug-15	15-May-31	8.75	4.9	3.96	6.92	↑ 3.6bps	107.48	6.643	7.084	106.80	108.70	17-Jun-26	107.20	27.97	12
FR0054	22-Jul-10	15-Jul-31	9.50	5.1	3.90	7.31	→ 0.0bps	109.14	6.633	7.074	110.19	112.18	17-Jun-26	111.30	0.01	2
FR0091	8-Jul-21	15-Apr-32	6.38	5.8	4.73	6.88	↓ -12.2bps	97.60	6.768	7.189	96.17	98.12	17-Jun-26	99.75	279.80	62
FR0058	21-Jul-11	15-Jun-32	8.25	6.0	4.72	7.04	↓ -34.4bps	105.85	6.840	7.172	105.18	106.84	17-Jun-26	103.93	7.74	7
FR0074	10-Nov-16	15-Aug-32	7.50	6.2	4.76	7.26	→ 0.0bps	101.17	6.793	7.180	101.56	103.50	17-Jun-26	102.20	8.51	8
FR0096	19-Aug-22	15-Feb-33	7.00	6.7	5.14	6.94	↓ -5.4bps	100.33	6.785	7.206	98.91	101.12	17-Jun-26	99.25	271.35	47
FR0065	30-Aug-12	15-May-33	6.63	6.9	5.42	6.96	↓ -44.6bps	98.20	6.717	7.158	97.13	99.49	17-Jun-26	96.50	108.77	33
FR0100	24-Aug-23	15-Feb-34	6.63	7.7	5.78	6.98	↑ 3.0bps	97.93	6.796	7.195	96.68	98.98	17-Jun-26	98.65	91.95	48
FR0068	1-Aug-13	15-Mar-34	8.38	7.7	5.63	6.98	↑ 0.7bps	108.23	6.825	7.199	106.87	109.19	17-Jun-26	107.80	222.10	33
FR0080	4-Jul-19	15-Jun-35	7.50	9.0	6.51	6.99	↓ -34.9bps	103.39	6.883	7.216	101.85	104.09	17-Jun-26	102.00	57.10	89
FR0103	29-Jul-25	15-Jul-35	6.75	9.1	6.49	6.97	↑ 2.7bps	98.56	6.819	7.260	96.64	99.53	17-Jun-26	98.10	205.27	55
<b>FR0108</b>	<b>31-Jul-25</b>	<b>15-Apr-36</b>	<b>6.50</b>	<b>9.8</b>	<b>7.05</b>	<b>6.88</b>	<b>↓ -48.7bps</b>	<b>97.33</b>	<b>6.797</b>	<b>7.210</b>	<b>95.05</b>	<b>97.88</b>	<b>17-Jun-26</b>	<b>99.35</b>	<b>1,315.76</b>	<b>105</b>
FR0072	9-Jul-15	15-May-36	8.25	9.9	6.81	6.99	↓ -2.9bps	108.89	6.802	7.244	107.02	110.30	17-Jun-26	108.55	553.12	25
FR0088	7-Jan-21	15-Jun-36	6.25	10.0	7.20	7.36	→ 0.0bps	92.22	6.807	7.249	92.98	96.01	17-Jun-26	96.60	24.24	69
FR0045	24-May-07	15-May-37	9.75	10.9	7.02	7.10	↓ -3.4bps	119.84	6.830	7.170	119.29	122.19	11-Jun-26	115.56	5.00	1
FR0093	6-Jan-22	15-Jul-37	6.38	11.1	7.54	7.02	↓ -3.8bps	95.05	6.798	7.198	93.78	96.74	17-Jun-26	94.77	55.12	31
FR0075	10-Aug-17	15-May-38	7.50	11.9	7.81	7.11	↓ -2.0bps	103.11	6.821	7.262	101.87	105.47	17-Jun-26	102.95	22.31	15
FR0098	15-Sep-22	15-Jun-38	7.13	12.0	7.99	7.04	↓ -46.6bps	100.69	6.986	7.309	98.55	101.11	17-Jun-26	99.70	30.74	53
FR0050	24-Jan-08	15-Jul-38	10.50	12.1	7.17	7.13	↑ 32.1bps	126.94	6.908	7.253	125.82	129.09	17-Jun-26	127.40	0.00	2
FR0079	7-Jan-19	15-Apr-39	8.38	12.8	7.95	7.14	↓ -31.1bps	110.23	7.063	7.279	109.02	110.93	17-Jun-26	109.70	42.50	12
FR0083	7-Nov-19	15-Apr-40	7.50	13.8	8.51	7.13	↓ -36.9bps	103.22	7.025	7.347	101.30	104.15	17-Jun-26	102.85	47.87	43
<b>FR0106</b>	<b>9-Jan-25</b>	<b>15-Aug-40</b>	<b>7.13</b>	<b>14.2</b>	<b>8.57</b>	<b>7.32</b>	<b>→ 0.0bps</b>	<b>98.26</b>	<b>7.016</b>	<b>7.341</b>	<b>98.11</b>	<b>100.96</b>	<b>17-Jun-26</b>	<b>99.75</b>	<b>481.96</b>	<b>84</b>
FR0057	21-Apr-11	15-May-41	9.50	14.9	8.50	7.20	↓ -31.2bps	120.86	6.843	7.285	119.93	124.57	12-Jun-26	120.40	0.20	2
FR0062	9-Feb-12	15-Apr-42	6.38	15.8	9.50	7.15	↓ -29.5bps	92.69	7.043	7.351	90.95	93.67	17-Jun-26	95.00	10.99	11
FR0092	8-Jul-21	15-Jun-42	7.13	16.0	9.45	7.13	↓ -20.5bps	99.94	6.998	7.321	98.17	101.21	17-Jun-26	101.80	37.11	81
FR0097	19-Aug-22	15-Jun-43	7.13	17.0	9.64	7.45	→ 0.0bps	96.93	7.020	7.378	97.57	101.03	17-Jun-26	100.90	39.32	96
FR0067	18-Jul-13	15-Feb-44	8.75	17.7	9.18	7.47	→ 0.0bps	112.38	7.000	7.441	112.73	117.57	17-Jun-26	114.75	6.00	2
<b>FR0107</b>	<b>9-Jan-25</b>	<b>15-Aug-45</b>	<b>7.13</b>	<b>19.2</b>	<b>10.15</b>	<b>7.07</b>	<b>↓ -0.7bps</b>	<b>100.56</b>	<b>7.026</b>	<b>7.419</b>	<b>97.01</b>	<b>101.02</b>	<b>17-Jun-26</b>	<b>100.60</b>	<b>261.89</b>	<b>58</b>
FR0076	22-Sep-17	15-May-48	7.38	21.9	10.71	7.38	↓ -3.9bps	99.95	7.196	7.433	99.37	101.95	17-Jun-26	103.65	25.56	118
FR0089	7-Jan-21	15-Aug-51	6.88	25.2	11.27	7.34	↓ -4.7bps	94.66	7.314	7.445	93.54	94.97	17-Jun-26	97.25	153.12	215
FR0102	5-Jan-24	15-Jul-54	6.88	28.1	11.56	7.39	→ 0.0bps	93.89	7.312	7.546	92.21	94.81	17-Jun-26	95.50	255.82	88
FR0105	27-Aug-24	15-Jul-64	6.88	38.1	13.03	6.90	↓ -48.2bps	99.73	7.224	7.666	90.27	95.48	14-Apr-25	99.00	0.10	1
ORI024T6	8-Nov-23	15-Oct-29	6.35	3.3	-	7.02	↑ 40.2bps	98.02	6.479	6.920	98.31	99.61	17-Jun-26	99.75	1.48	11
ORI025T6	28-Feb-24	15-Feb-30	6.40	3.7	-	6.94	↓ -7.2bps	98.26	6.408	6.849	98.55	99.97	17-Jun-26	99.65	3.98	24
ORI026T6	30-Oct-24	15-Oct-30	6.40	4.3	-	7.02	↓ -17.7bps	97.69	6.522	6.963	97.90	99.54	17-Jun-26	99.50	1.22	13
PBS003	2-Feb-12	15-Jan-27	6.00	0.6	0.54	7.17	→ 0.0bps	99.34	6.562	7.004	99.43	99.68	17-Jun-26	99.20	470.06	145
PBS020	22-Oct-18	15-Oct-27	9.00	1.3	1.23	5.26	↑ 9.2bps	104.71	5.136	5.578	104.31	104.89	31-Jul-24	108.25	0.50	1
PBS018	4-Jun-18	15-May-28	7.63	1.9	1.75	6.61	↑ 8.7bps	101.78	6.026	6.467	102.04	102.84	3-Sep-19	99.29	2,000.00	2
<b>PBS030</b>	<b>4-Jun-21</b>	<b>15-Jul-28</b>	<b>5.88</b>	<b>2.1</b>	<b>1.87</b>	<b>7.07</b>	<b>→ 0.0bps</b>	<b>97.72</b>	<b>6.602</b>	<b>7.043</b>	<b>97.77</b>	<b>98.60</b>	<b>17-Jun-26</b>	<b>97.73</b>	<b>2,948.92</b>	<b>439</b>
PBSG001	22-Sep-22	15-Sep-29	6.63	3.2	2.83	6.67	↑ 3.5bps	99.86	6.360	6.802	99.48	100.75	17-Jun-26	99.95	0.15	5
IFR0006	1-Apr-10	15-Mar-30	10.25	3.7	3.06	6.62	↑ 4.1bps	111.85	6.003	6.444	112.46	114.04	11-Mar-26	113.43	2.00	2
PBS023	15-May-19	15-May-30	8.13	3.9												

PRICE INDEX



YIELD INDEX



TECHNICAL ANALYSIS

FR0109

INDICATORS	17-Jun-26	-1 Day	Change
Last Price	96.11	95.92	0.19
DI+	35.89	33.07	2.81
DI-	40.90	42.69	(1.79)
ADX (15D)	42.39	44.95	(2.56)
A/D	-20,231.35	-20,333.32	101.96
CMF(20D)	-0.285	-0.284	(0.00)
CCI	9.14	-31.89	41.03
Volume (IDR bn)	3,730.02	2,186.55	1,543.47
Frequency	141	101	40

COMMENT

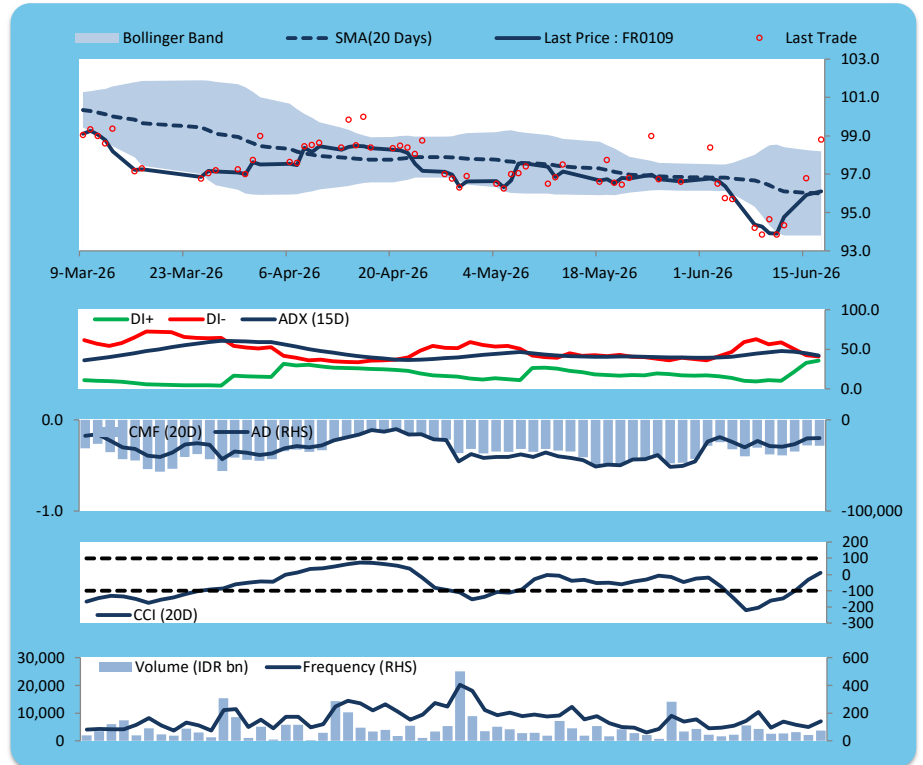
Price increased; heavy trade volume; upward trend continues to weaken; selling pressure increased; CCI increased.

BUY

FEATURES

Issue Date	14-Aug-25
Mature Date	15-Mar-31
Tenor	4.7
Coupon Rate	5.88
Last Yield	6.85
Modified Duration	4.00
Previous Coupon Date	15-Mar-26
Next Coupon Date	15-Sep-26

Sources: Bloomberg (Price); IDX



FR0108

INDICATORS	17-Jun-26	-1 Day	Change
Last Price	97.40	94.02	3.38
DI+	36.67	11.27	25.40
DI-	43.30	60.84	(17.54)
ADX (15D)	34.22	36.07	(1.85)
A/D	-7,696.79	-11,431.00	3,734.22
CMF(20D)	-0.193	-0.273	0.08
CCI	8.14	-109.70	117.83
Volume (IDR bn)	1,315.76	1,871.66	(555.91)
Frequency	105	125	(20)

COMMENT

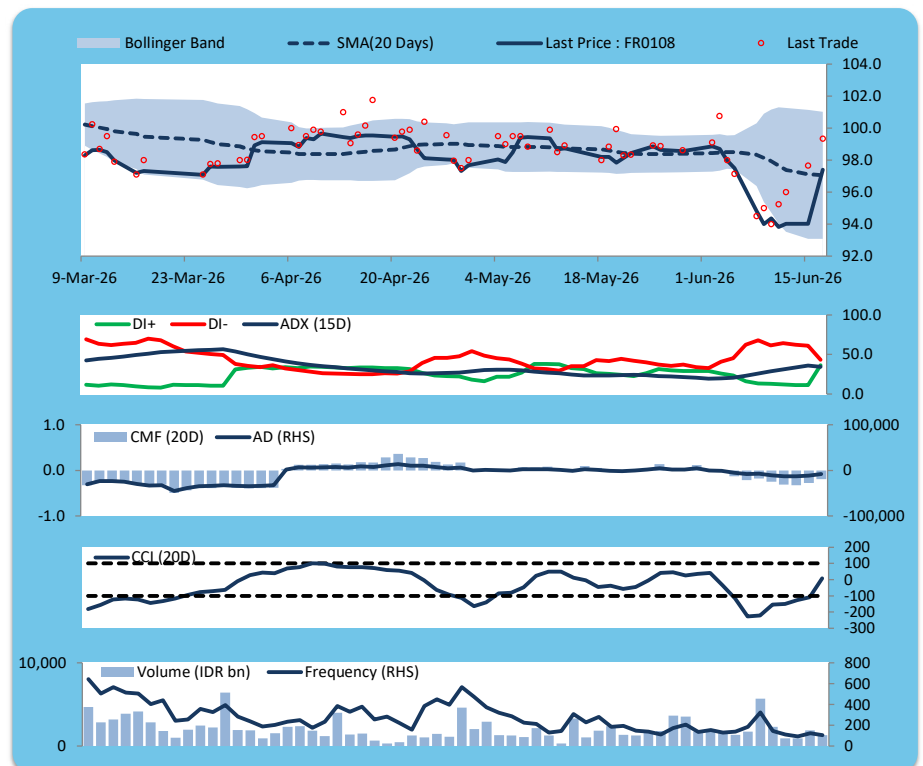
Price increased; heavy trade volume; upward trend continues to weaken; selling pressure eased; CCI increased.

BUY

FEATURES

Issue Date	31-Jul-25
Mature Date	15-Apr-36
Tenor	9.8
Coupon Rate	6.50
Last Yield	6.87
Modified Duration	7.05
Previous Coupon Date	15-Apr-26
Next Coupon Date	15-Oct-26

Sources: Bloomberg (Price); IDX



FR0106

INDICATORS	17-Jun-26	-1 Day	Change
Last Price	98.26	98.26	0.00
DI+	13.38	14.15	(0.78)
DI-	57.04	60.36	(3.32)
ADX (15D)	41.48	40.02	1.47
A/D	-4,787.55	-7,954.90	3,167.35
CMF(20D)	-0.191	-0.291	0.10
CCI	-81.22	-90.39	9.18
Volume (IDR bn)	481.96	1,522.19	(1,040.23)
Frequency	84	125	(41)

COMMENT

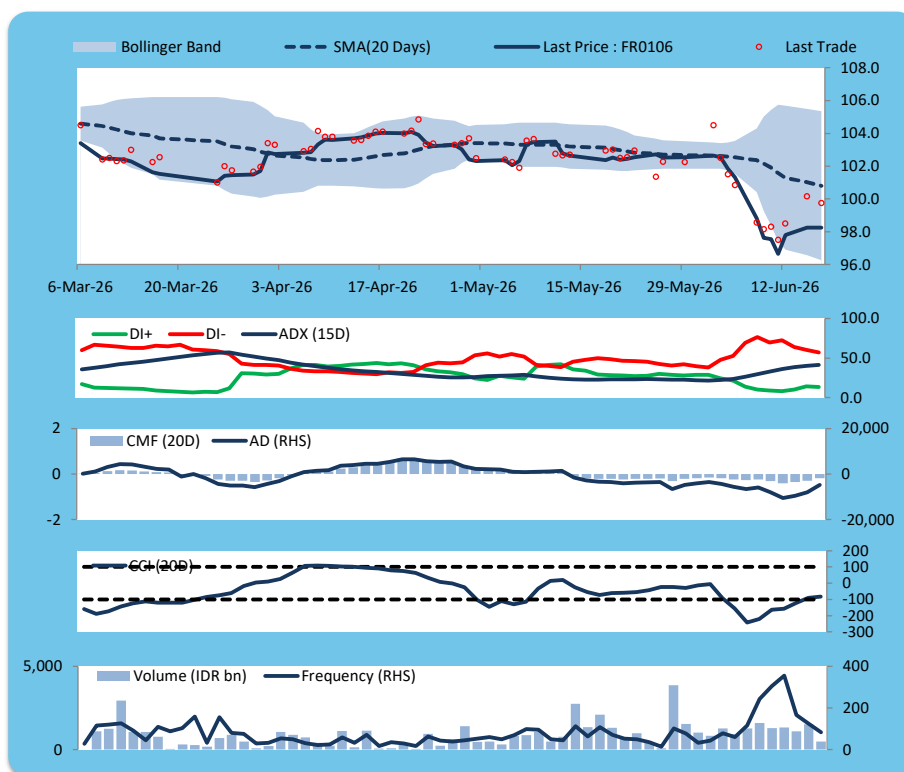
Price increased slightly; moderate trade volume; upward trend continues to strengthen; selling pressure eased; CCI increased.

HOLD

FEATURES

Issue Date	9-Jan-25
Mature Date	15-Aug-40
Tenor	14.2
Coupon Rate	7.13
Last Yield	7.32
Modified Duration	8.57
Previous Coupon Date	15-Feb-26
Next Coupon Date	15-Aug-26

Sources: Bloomberg (Price); IDX



FR0107

INDICATORS	17-Jun-26	-1 Day	Change
Last Price	100.56	100.56	0.00
DI+	25.23	32.71	(7.48)
DI-	40.66	52.71	(12.06)
ADX (15D)	41.05	42.31	(1.26)
A/D	-2,681.19	-5,908.81	3,227.62
CMF(20D)	-0.161	-0.298	0.14
CCI	-49.49	-54.90	5.41
Volume (IDR bn)	261.89	860.45	(598.56)
Frequency	58	223	(165)

COMMENT

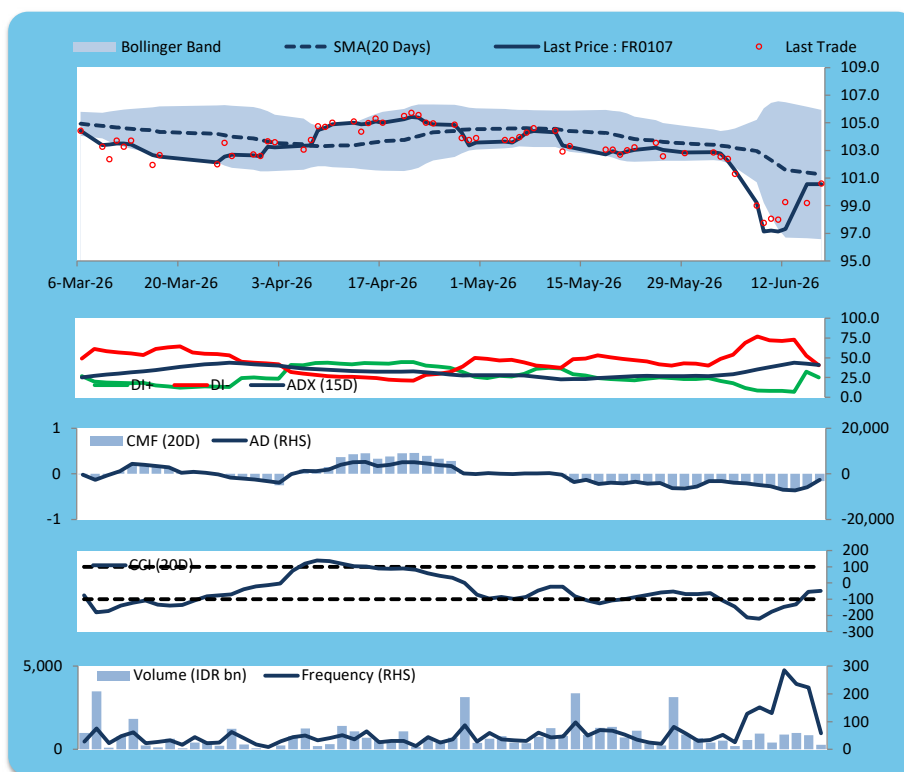
Price increased slightly; moderate trade volume; upward trend continues to weaken; selling pressure eased; CCI increased.

HOLD

FEATURES

Issue Date	9-Jan-25
Mature Date	15-Aug-45
Tenor (year)	19.2
Coupon Rate	7.13
Last Yield	7.07
Modified Duration	10.15
Previous Coupon Date	15-Feb-26
Next Coupon Date	15-Aug-26

Sources: Bloomberg (Price); IDX



**ECONOMIC AND FIXED INCOME RESEARCH TEAM****Chief Economist and Head Fixed Income Research**

Helmy Kristanto	helmy.kristanto@brids.co.id	(62-21) 5091 4100 ext. 3400
-----------------	-----------------------------	-----------------------------

**Economists**

Relindya Yuriswari Salehaningtyas	relindya.salehaningtyas@brids.co.id	(62-21) 5091 4100 ext. 3609
Ebenezer Mesotuhu Harefa	ebenezer.harefa@brids.co.id	(62-21) 5091 4100 ext. 3609

**Credit Analyst**

Laras Nerpatari Suliyas	laras.nerpatari@brids.co.id	(62-21) 5091 4100 ext. 3403
-------------------------	-----------------------------	-----------------------------

**Production & Database Management**

Eka Nuraini	ekan@brids.co.id	(62-21) 5091 4100 ext. 3407
Faiqul Kurnia Muslim	faiqul.muslim@brids.co.id	(62-21) 5091 4100 ext. 3402

**INSTITUTIONAL DEBT SALES & TRADING TEAM****Head of Debt Capital Market**

Yopi Chandra Wardhani	yopi.wardhani@brids.co.id	(62-21) 5091 4100 ext. 3220
-----------------------	---------------------------	-----------------------------

**Debt Sales**

Rachmat Eko Putranto	rachmat.putranto@brids.co.id	(62-21) 5091 4100 ext. 3218
Rafi Hutama Soeriaatmadja	rafi.soeriaatmadja@brids.co.id	(62-21) 5091 4100 ext. 3926
Adzkia Zahra	adzkia.zahra@brids.co.id	(62-21) 5091 4100 ext. 3924

**Debt Brokerage**

Citra Isramij P.	citra.isramij@brids.co.id	(62-21) 5091 4100 ext. 3228
Sisca Emilia	sisca.emilia@brids.co.id	(62-21) 5091 4100 ext. 3921
Deviano Sujitno	deviano.sujitno@brids.co.id	(62-21) 5091 4100 ext. 3925

**DISCLAIMER:** The information contained in this report has been taken from sources which we deem reliable. However, none of P.T. BRI Danareksa Sekuritas and/or its affiliated companies and/or their respective employees and/or agents makes any representation or warranty (express or implied) or accepts any responsibility or liability as to, or in relation to, the accuracy or completeness of the information and opinions contained in this report or as to any information contained in this report or any other such information or opinions remaining unchanged after the issue thereof. We expressly disclaim any responsibility or liability (express or implied) of P.T. BRI Danareksa Sekuritas, its affiliated companies and their respective employees and agents whatsoever and howsoever arising (including, without limitation for any claims, proceedings, action, suits, losses, expenses, damages or costs) which may be brought against or suffered by any person as a result of acting in reliance upon the whole or any part of the contents of this report and neither P.T. BRI Danareksa Sekuritas, its affiliated companies or their respective employees or agents accepts liability for any errors, omissions or mis-statements, negligent or otherwise, in the report and any liability in respect of the report or any inaccuracy therein or omission therefrom which might otherwise arise is hereby expressly disclaimed. The information contained in this report is not to be taken as any recommendation made by P.T. BRI Danareksa Sekuritas or any other person to enter into any agreement with regard to any investment mentioned in this document. This report is prepared for general circulation. It does not have regard to the specific person who may receive this report. In considering any investments you should make your own independent assessment and seek your own professional financial and legal advice.