

**MOST ACTIVE GOVERNMENT BONDS**

Bond	Coupon	Maturity	Last Price	Yield	Volume (IDR bn)
FR0109	5.875	15-Mar-31	94.35	7.212	3,093.10
PBS038	6.875	15-Dec-49	95.25	6.891	1,804.61
PBS030	5.880	15-Jul-28	98.20	7.073	1,654.65
FR0103	6.750	15-Jul-35	97.00	7.319	1,418.34
FR0106	7.125	15-Aug-40	98.50	7.382	1,104.77
FR0107	7.125	15-Aug-45	99.25	7.393	984.59
FR0108	6.500	15-Apr-36	96.00	7.364	907.30
FR0068	8.375	15-Mar-34	106.55	7.303	715.98
PBS032	4.875	15-Jul-26	99.70	6.823	698.28
FR0102	6.875	15-Jul-54	93.40	7.388	543.32

Coupon, Last Price & Yield are in %; Volume is in IDR bn; Rating code: id(Pefindo) & idn (Fitch Indonesia)  
Sources: Bloomberg; Indonesia Stock Exchange (Volume)

**MOST ACTIVE CORPORATE BONDS**

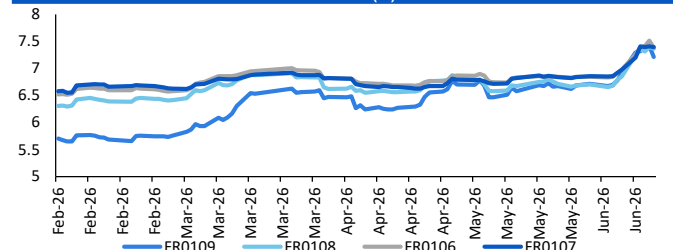
Bond	Rating	Coupon	Maturity	Last Price	Yield	Volume
BAFI03BCN3	AAA	7.000	28-May-28	98.96	7.58	395.00
DART04BCN1	A-	10.500	2-Jul-28	102.20	9.31	316.00
BBRI01BSOCN1	AAA	6.550	26-Jun-28	97.05	8.13	247.50
PALM02BCN3	A	9.750	18-Sep-27	102.10	7.99	215.00
SIBALI01BCN3	A	7.250	5-Dec-28	97.94	8.18	215.00
SMBMA01ACN2	A	7.500	27-Aug-26	99.94	7.50	200.00
BBTN01SOCN1	AAA	5.300	12-Dec-28	92.70	8.58	180.00
SMPNMP01ASECN1	AAA	6.250	18-Jul-26	99.15	6.30	160.00
SIBOLD01B	A+	8.500	26-Mar-28	96.21	10.86	160.00
SMADMF06BCN2	AAA	5.650	21-Oct-28	96.50	7.28	160.00

**SOVEREIGN BOND YIELDS**

Country	Tenor	Coupon (%)	12-Jun-26			Spread over UST YC (bps)		
			12-Jun-26	MA LTM as of May	MA LTM as of Apr	12-Jun-26	May	Apr
United States	2yr		4.09	4.05	3.89			
USD	5yr		4.17	4.14	4.01			
	10yr		4.45	4.44	4.37			
German	2yr	0.25	2.61	2.53	2.64	-144	-148	-123
EUR	5yr	1.00	2.70	2.64	2.75	-147	-151	-126
	10yr	1.75	2.98	2.94	3.04	-146	-150	-134
Indonesia	2yr	3.50	-	4.18	4.20	-	18	32
USD	5yr	3.85	-	4.73	4.57	-	59	56
	10yr	6.63	-	5.50	5.35	-	106	98
Brazil	2yr	0.00	14.46	13.82	13.71	1,042	982	984
BRL	3yr	0.00	14.57	13.94	13.81	1,053	994	994
	10yr	10.00	14.47	14.12	13.98	1,043	1,012	1,010
Philippines	2yr	6.00	6.63	6.85	5.83	258	285	195
PHP	5yr	7.88	7.49	7.45	6.84	332	331	283
	10yr	11.38	7.45	7.42	6.92	301	298	254
Thailand	2yr	3.13	1.17	1.24	1.24	-288	-276	-264
THB	5yr	3.45	1.62	1.68	1.61	-255	-246	-240
	10yr	3.63	2.23	2.33	2.20	-222	-211	-218
India	2yr	7.59	6.20	6.42	6.26	215	241	239
INR	5yr	7.28	6.52	6.82	6.77	236	268	277
	10yr	8.83	6.89	7.01	7.04	244	257	266
Malaysia	3yr	3.17	3.26	3.24	3.21	-83	-82	-68
MYR	5yr	3.26	3.43	3.41	3.36	-74	-74	-65
	10yr	4.18	3.59	3.58	3.57	-85	-86	-80

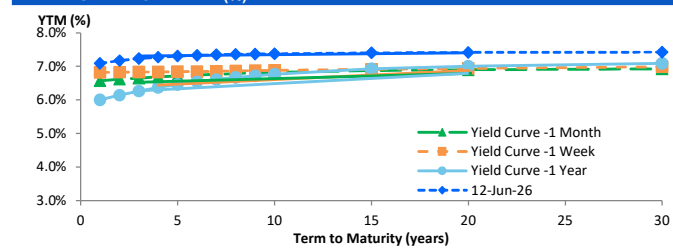
Sources: Bloomberg (Current Yield Curve), US Treasury

**YIELD OF GOVERNMENT BOND BENCHMARK (%)**



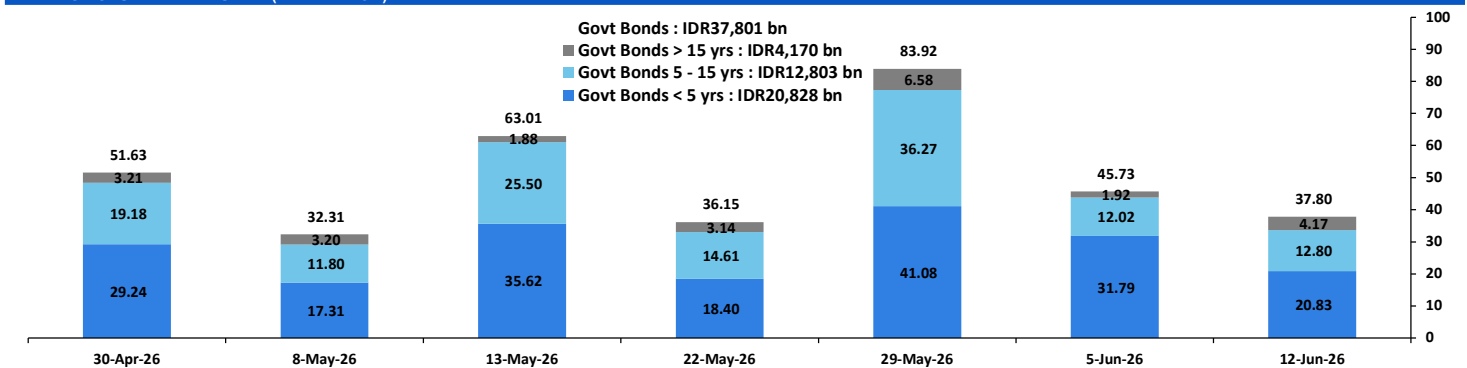
Source: Bloomberg

**YIELD CURVE MOVEMENT (%)**



Source: Bloomberg

**TRADING VOLUME BY MATURITY (IDR TRILLION)**



Sources: Indonesia Stock Exchange

**CURRENCY**

Price	12-Jun-26	-1 Day	-1 Week	-1 Month	EoP2025
DX	99.73	↓	99.86	100.07	98.30
USD/IDR	17,870	↓	17,993	18,020	17,500
EUR/USD	1.16	↑	1.16	1.15	1.17
USD/JPY	160.05	↑	159.93	160.29	157.63
USD/CNY	6.761	↓	6.775	6.788	6.797
USD/MYR	4.058	↓	4.065	4.030	3.935
SGD/IDR	13,878	↓	13,967	14,048	13,757

Source: Bloomberg

**COMMODITY**

Price	12-Jun-26	-1 Day	-1 Week	-1 Month	EoP2025
CPO (Palm Oil)	4,379	↓	4,450	4,492	4,451
Coal	149.25	↓	151.75	148.75	132.50
Gold (XAU/USD)	4,222	↑	4,212	4,328	4,715
Nickel	17,478	↓	18,381	18,381	18,767
Copper	640.25	↑	627.50	628.45	648.50
Brent	86.48	↓	90.38	93.09	107.77
WTI	83.79	↓	87.71	90.54	102.18

**PHEI FAIR SPREAD**

	1Y	2Y	3Y	4Y	5Y	6Y	7Y	8Y	9Y	10Y
AAA	29	39	46	51	55	58	60	61	62	62
AA+	37	46	52	57	59	61	63	64	64	65
AA	56	65	71	75	77	79	80	81	82	83
AA-	92	106	112	116	118	121	122	124	126	127
A+	142	161	168	173	177	181	184	187	189	191
A	195	221	230	237	243	249	255	259	262	265
A-	247	278	290	300	309	318	326	332	336	340
BBB+	296	331	347	361	374	387	397	405	410	414
BBB	343	383	403	421	439	455	468	477	484	489

\*interpolated, as of June 12, 2026 (bps)

Sources: PHEI, Bloomberg

**SBN HOLDING - (IDR tn)**

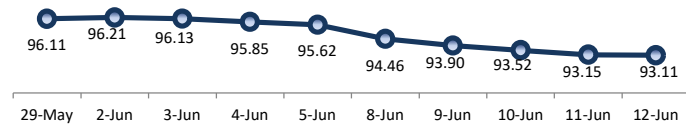
	10-Jun-2026	WoW	MoM	YTD
Banks	1,170.9	(45.9)	(54.0)	(157.7)
Bank Indonesia (exclude repo)	1,906.7	44.7	58.8	265.0
Non-Banks:				
Mutual Fund	259.8	0.9	5.3	16.8
Insurance & Pension Fund	1,403.1	3.0	12.7	112.4
Foreign Investor	868.0	(3.2)	4.8	(10.7)
Individual	552.4	(0.5)	(0.5)	15.1
Others	721.4	5.9	8.2	72.5
<b>Total</b>	<b>6,882.3</b>	<b>4.9</b>	<b>35.4</b>	<b>313.5</b>
Domestic Investor	4,107.7	(36.7)	(28.3)	59.1
Foreign Investor	868.0	(3.2)	4.8	(10.7)
Bank Indonesia (include repo)	1,758.2	36.3	38.9	117.6

Source: DJPPR (Processed)

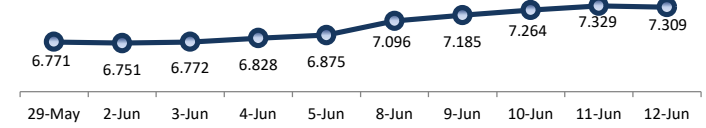
VALUATIONS OF GOVERNMENT BONDS

Bond	Issue Date	Mature Date	Coupon	TTM	Modified Duration	YTM (Change)	Prev Closing Price	Fair Yield Range		Fair Price Range		Last Trade			
												Date	Price	Vol (IDR bn)	Freq
FR0056	23-Sep-10	15-Sep-26	8.38	0.3	0.25	6.95 → 0.0bps	100.33	6.464	6.974	100.32	100.45	11-Jun-26	100.25	542.80	20
FR0090	8-Jul-21	15-Apr-27	5.13	0.8	0.80	7.13 ↑ 5.5bps	98.41	6.926	7.226	98.30	98.54	11-Jun-26	99.90	467.05	77
FR0059	15-Sep-11	15-May-27	7.00	0.9	0.88	7.13 ↓ -0.9bps	99.88	6.934	7.337	99.70	100.05	11-Jun-26	99.89	438.86	94
FR0042	25-Jan-07	15-Jul-27	10.25	1.1	0.99	7.13 → 0.0bps	103.21	6.884	7.304	103.02	103.47	8-Jun-26	102.97	0.00	1
FR0094	4-Mar-22	15-Jan-28	5.60	1.6	1.46	7.15 ↑ 31.1bps	97.73	6.301	6.811	98.20	98.95	9-Jun-26	97.35	0.20	2
FR0047	30-Aug-07	15-Feb-28	10.00	1.7	1.49	7.09 → 0.0bps	104.50	6.958	7.274	104.21	104.72	11-Jun-26	104.55	15.23	5
FR0064	13-Aug-12	15-May-28	6.13	1.9	1.77	7.17 ↓ -7.8bps	98.16	7.007	7.270	97.97	98.43	11-Jun-26	97.80	195.06	39
FR0095	19-Aug-22	15-Aug-28	6.38	2.2	1.96	7.15 ↓ -11.3bps	98.47	6.966	7.278	98.20	98.81	11-Jun-26	98.80	215.09	43
FR0099	27-Jan-23	15-Jan-29	6.40	2.6	2.29	6.94 ↑ 32.4bps	98.73	6.670	7.188	98.18	99.36	1-Jul-25	99.50	49.05	2
FR0071	12-Sep-13	15-Mar-29	9.00	2.8	2.38	7.17 ↓ -8.1bps	104.46	7.021	7.280	104.21	104.87	11-Jun-26	104.18	69.89	16
FR0101	2-Nov-23	15-Apr-29	6.88	2.8	2.51	7.21 ↓ -7.8bps	99.14	7.022	7.280	98.96	99.61	11-Jun-26	99.10	515.19	78
FR0078	27-Sep-18	15-May-29	8.25	2.9	2.55	7.31 ↓ -5.7bps	102.42	7.047	7.344	102.34	103.12	11-Jun-26	102.12	243.91	32
FR0104	22-Aug-24	15-Jul-30	6.50	4.1	3.43	7.28 ↓ -11.4bps	97.29	7.142	7.427	96.77	97.75	11-Jun-26	99.25	5,265.70	98
FR0052	20-Aug-09	15-Aug-30	10.50	4.2	3.31	7.33 ↑ 34.5bps	111.18	6.873	7.349	111.14	112.96	11-Jun-26	112.80	0.00	1
FR0082	1-Aug-19	15-Sep-30	7.00	4.3	3.56	7.24 ↓ -1.3bps	99.13	7.069	7.333	98.78	99.74	11-Jun-26	99.75	344.23	168
FRSDG001	27-Oct-22	15-Oct-30	7.38	4.3	3.64	6.67 ↑ 1.4bps	102.61	6.832	7.342	100.11	102.00	10-Jun-26	100.04	10.00	1
FR0087	13-Aug-20	15-Feb-31	6.50	4.7	3.87	7.33 ↓ -9.7bps	96.77	7.125	7.475	96.20	97.54	11-Jun-26	96.20	874.16	73
<b>FR0109</b>	<b>15-Aug-25</b>	<b>15-Mar-31</b>	<b>5.88</b>	<b>4.8</b>	<b>4.00</b>	<b>7.21</b>	<b>94.69</b>	<b>7.087</b>	<b>7.463</b>	<b>93.72</b>	<b>95.16</b>	<b>11-Jun-26</b>	<b>93.85</b>	<b>2,679.66</b>	<b>139</b>
FR0085	4-May-20	15-Apr-31	7.75	4.8	3.94	7.33 ↑ 66.9bps	101.66	6.767	7.277	101.89	103.99	11-Jun-26	102.80	0.05	1
FR0073	6-Aug-15	15-May-31	8.75	4.9	3.96	7.28 ↓ -12.6bps	105.95	6.982	7.430	105.35	107.25	11-Jun-26	105.13	7.05	8
FR0054	22-Jul-10	15-Jul-31	9.50	5.1	3.91	7.36 ↑ 55.3bps	108.91	6.904	7.414	108.70	110.97	11-Jun-26	109.40	0.52	4
FR0091	8-Jul-21	15-Apr-32	6.38	5.8	4.72	7.28 ↓ -15.1bps	95.77	7.158	7.492	94.78	96.30	11-Jun-26	93.95	210.04	78
FR0058	21-Jul-11	15-Jun-32	8.25	6.0	4.53	7.39 ↓ -1.0bps	104.12	7.028	7.485	103.64	105.90	11-Jun-26	104.30	0.20	2
FR0074	10-Nov-16	15-Aug-32	7.50	6.2	4.77	7.28 ↓ -8.7bps	101.05	7.153	7.446	100.25	101.69	11-Jun-26	99.75	1.94	9
FR0096	19-Aug-22	15-Feb-33	7.00	6.7	5.12	7.35 ↓ -8.6bps	98.18	7.188	7.485	97.47	99.00	11-Jun-26	98.65	224.82	76
FR0065	30-Aug-12	15-May-33	6.63	6.9	5.40	7.40 ↓ -1.0bps	95.85	6.997	7.508	95.29	97.98	11-Jun-26	95.10	35.20	36
FR0100	24-Aug-23	15-Feb-34	6.63	7.7	5.76	7.27 ↓ -15.7bps	96.24	7.200	7.457	95.19	96.64	11-Jun-26	98.50	474.54	109
FR0068	1-Aug-13	15-Mar-34	8.38	7.8	5.61	7.30 ↓ -4.1bps	106.24	7.232	7.455	105.33	106.68	11-Jun-26	105.75	351.85	43
FR0080	4-Jul-19	15-Jun-35	7.50	9.0	6.26	7.33 → 0.0bps	101.08	7.170	7.517	99.89	102.16	11-Jun-26	99.95	20.50	34
FR0103	29-Jul-25	15-Jul-35	6.75	9.1	6.46	7.32 ↓ -9.9bps	96.27	7.195	7.516	95.01	97.06	11-Jun-26	95.00	299.95	84
<b>FR0108</b>	<b>31-Jul-25</b>	<b>15-Apr-36</b>	<b>6.50</b>	<b>9.8</b>	<b>7.00</b>	<b>7.36</b>	<b>94.02</b>	<b>7.083</b>	<b>7.487</b>	<b>93.20</b>	<b>95.91</b>	<b>11-Jun-26</b>	<b>95.25</b>	<b>910.56</b>	<b>113</b>
FR0072	9-Jul-15	15-May-36	8.25	9.9	6.76	7.43 ↑ 1.0bps	105.65	7.120	7.537	104.91	107.94	11-Jun-26	105.32	651.79	56
FR0088	7-Jan-21	15-Jun-36	6.25	10.0	6.97	7.36 ↓ -4.7bps	92.22	7.107	7.458	91.59	93.93	11-Jun-26	92.60	34.85	30
FR0045	24-May-07	15-May-37	9.75	10.9	6.98	7.41 ↓ -17.1bps	117.25	7.121	7.429	117.15	119.72	11-Jun-26	115.56	5.00	1
FR0093	6-Jan-22	15-Jul-37	6.38	11.1	7.49	7.37 → 0.0bps	92.58	7.081	7.456	91.93	94.63	11-Jun-26	92.75	17.35	15
FR0075	10-Aug-17	15-May-38	7.50	11.9	7.76	7.44 ↑ 52.9bps	100.49	7.051	7.561	99.52	103.58	11-Jun-26	101.00	26.30	41
FR0098	15-Sep-22	15-Jun-38	7.13	12.0	7.63	7.51 ↑ 1.6bps	97.03	7.244	7.541	96.75	99.06	11-Jun-26	96.78	157.45	106
FR0050	24-Jan-08	15-Jul-38	10.50	12.1	7.13	7.38 ↓ -1.0bps	124.61	7.176	7.499	123.57	126.56	11-Jun-26	121.79	3.80	1
FR0079	7-Jan-19	15-Apr-39	8.38	12.8	7.89	7.45 ↑ 6.2bps	107.51	7.290	7.512	107.02	108.93	11-Jun-26	105.00	17.82	26
FR0083	7-Nov-19	15-Apr-40	7.50	13.8	8.43	7.50 ↑ 0.8bps	100.01	7.246	7.551	99.55	102.18	11-Jun-26	100.75	42.86	83
<b>FR0106</b>	<b>9-Jan-25</b>	<b>15-Aug-40</b>	<b>7.13</b>	<b>14.2</b>	<b>8.56</b>	<b>7.38</b>	<b>97.75</b>	<b>7.224</b>	<b>7.537</b>	<b>96.43</b>	<b>99.12</b>	<b>11-Jun-26</b>	<b>97.50</b>	<b>1,345.68</b>	<b>356</b>
FR0057	21-Apr-11	15-May-41	9.50	14.9	8.52	7.19 ↑ 33.7bps	120.96	6.999	7.507	117.70	122.92	14-Apr-26	126.50	5.25	2
FR0062	9-Feb-12	15-Apr-42	6.38	15.8	9.41	7.45 ↑ 4.0bps	90.10	7.230	7.524	89.46	92.00	11-Jun-26	93.00	6.97	17
FR0092	8-Jul-21	15-Jun-42	7.13	16.0	9.02	7.46 ↑ 1.2bps	96.94	7.175	7.501	96.53	99.53	11-Jun-26	98.70	208.53	58
FR0097	19-Aug-22	15-Jun-43	7.13	17.0	9.30	7.46 ↓ -0.6bps	96.79	7.202	7.470	96.71	99.25	11-Jun-26	98.75	114.99	33
FR0067	18-Jul-13	15-Feb-44	8.75	17.7	9.19	7.47 ↑ 24.7bps	112.38	7.157	7.549	111.60	115.82	10-Jun-26	114.51	1.40	1
<b>FR0107</b>	<b>9-Jan-25</b>	<b>15-Aug-45</b>	<b>7.13</b>	<b>19.2</b>	<b>10.01</b>	<b>7.39</b>	<b>97.26</b>	<b>7.206</b>	<b>7.511</b>	<b>96.09</b>	<b>99.15</b>	<b>11-Jun-26</b>	<b>98.00</b>	<b>879.38</b>	<b>285</b>
FR0076	22-Sep-17	15-May-48	7.38	21.9	10.70	7.42 ↓ -2.4bps	99.53	7.286	7.478	98.89	100.96	11-Jun-26	101.95	36.23	71
FR0089	7-Jan-21	15-Aug-51	6.88	25.2	11.23	7.42 ↑ 9.2bps	93.86	7.329	7.458	93.40	94.80	11-Jun-26	93.00	68.07	57
FR0102	5-Jan-24	15-Jul-54	6.88	28.1	11.58	7.39 ↑ 2.9bps	93.95	7.272	7.505	92.65	95.27	11-Jun-26	95.50	102.29	78
FR0105	27-Aug-24	15-Jul-64	6.88	38.1	12.42	7.39 ↑ 49.2bps	93.47	7.016	7.526	91.86	98.13	14-Apr-25	99.00	0.10	1
ORI024T6	8-Nov-23	15-Oct-29	6.35	3.3	-	6.62 ↑ 0.1bps	99.20	6.772	7.282	97.24	98.74	11-Jun-26	97.10	1.09	9
ORI025T6	28-Feb-24	15-Feb-30	6.40	3.7	-	7.12 ↓ -3.0bps	97.70	6.809	7.229	97.33	98.67	11-Jun-26	97.55	3.64	11
ORI026T6	30-Oct-24	15-Oct-30	6.40	4.3	-	7.32 ↓ -3.8bps	96.61	6.788	7.298	96.67	98.54	10-Jun-26	97.35	0.77	4
PBS003	2-Feb-12	15-Jan-27	6.00	0.6	0.56	7.17 ↑ 12.4bps	99.34	6.630	7.140	99.34	99.63	11-Jun-26	99.38	688.68	118
PBS020	22-Oct-18	15-Oct-27	9.00	1.3	1.25	5.41 ↓ -2.0bps	104.53	5.388	5.898	103.93	104.60	31-Jul-24	108.25	0.50	1
PBS018	4-Jun-18	15-May-28	7.63	1.9	1.76	6.69 ↓ -0.9bps	101.65	6.198	6.708	101.62	102.54	3-Sep-19	99.29	2,000.00	2
<b>PBS030</b>	<b>4-Jun-21</b>	<b>15-Jul-28</b>	<b>5.88</b>	<b>2.1</b>	<b>1.88</b>	<b>7.07</b>	<b>97.72</b>	<b>6.835</b>	<b>7.266</b>	<b>97.34</b>	<b>98.15</b>	<b>11-Jun-26</b>	<b>97.60</b>	<b>451.47</b>	<b>332</b>
PBSG001	22-Sep-22	15-Sep-29	6.63	3.3	2.84	6.61 ↑ 0.3bps	100.02	6.612	7.122	98.56	100.02	11-Jun-26	99.70	0.70	1
IFR0006	1-Apr-10	15-Mar-30	10.25	3.8	3.08	6.60 ↓ -1.9bps	111.90	6.259	6.770	111.36	113.16	11-Mar-26	113.43	2.00	2
PBS023	15-May-19	15-May-30	8.13	3.9	3.33	6.28 ↓ -1.7bps	106.32	6.120	6.630	105.08	106.89	3-Jun-26	103.91	17.00	5
<b>PBS040</b>	<b>30-Oct-25</b>	<b>15-Nov-30</b>	<b>5.00</b>	<b>4.4</b>	<b>3.86</b>	<b>6.67</b>	<b>93.72</b>	<b>6.654</b>	<b>7.164</b>	<b>91.91</b>	<b>93.74</b>	<b>11-Jun-26</b>	<b>93.00</b>	<b>77.56</b>	<b>44</b>
PBS012	28-Jan-16	15-Nov-31	8.88	5.4	4.31	6									

PRICE INDEX



YIELD INDEX



TECHNICAL ANALYSIS

FR0109

INDICATORS	12-Jun-26	-1 Day	Change
Last Price	94.65	93.90	0.75
DI+	20.02	10.52	9.50
DI-	51.76	58.77	(7.01)
ADX (15D)	47.48	47.71	(0.23)
A/D	-26,743.87	-29,570.59	2,826.72
CMF(20D)	-0.349	-0.392	0.04
CCI	-101.36	-148.75	47.40
Volume (IDR bn)	3,093.10	2,679.66	413.44
Frequency	117	139	(22)

COMMENT

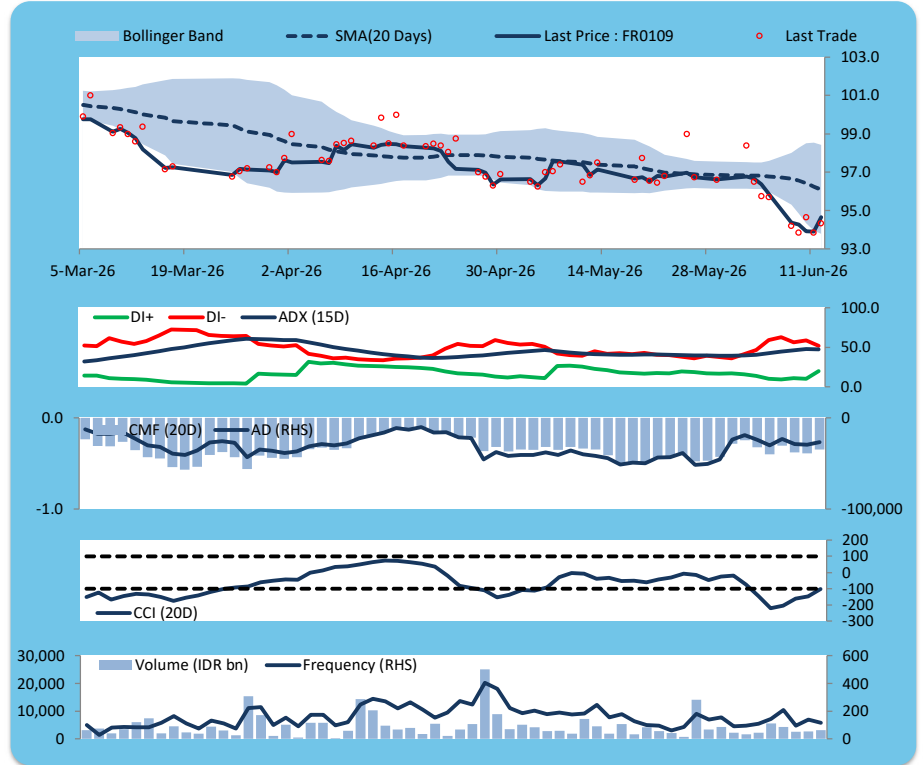
Price increased; heavy trade volume; upward trend continues to weaken; selling pressure eased; CCI increased.

BUY

FEATURES

Issue Date	14-Aug-25
Mature Date	15-Mar-31
Tenor	4.8
Coupon Rate	5.88
Last Yield	7.22
Modified Duration	4.00
Previous Coupon Date	15-Mar-26
Next Coupon Date	15-Sep-26

Sources: Bloomberg (Price); IDX



FR0108

INDICATORS	12-Jun-26	-1 Day	Change
Last Price	94.02	93.81	0.21
DI+	11.59	11.91	(0.32)
DI-	62.58	64.29	(1.71)
ADX (15D)	33.74	31.24	2.50
A/D	-13,052.02	-12,634.13	(417.89)
CMF(20D)	-0.324	-0.311	(0.01)
CCI	-125.14	-151.01	25.87
Volume (IDR bn)	907.30	910.56	(3.26)
Frequency	91	113	(22)

COMMENT

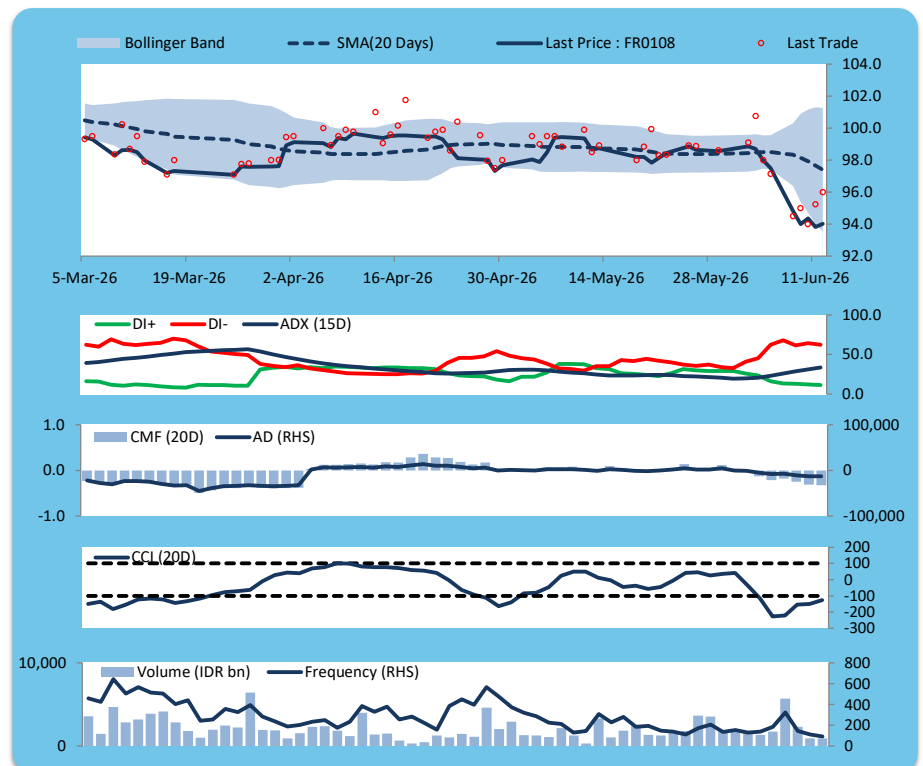
Price increased; heavy trade volume; upward trend continues to weaken; selling pressure increased; CCI increased.

HOLD

FEATURES

Issue Date	31-Jul-25
Mature Date	15-Apr-36
Tenor	9.8
Coupon Rate	6.50
Last Yield	7.36
Modified Duration	7.00
Previous Coupon Date	15-Apr-26
Next Coupon Date	15-Oct-26

Sources: Bloomberg (Price); IDX



FR0106

INDICATORS	12-Jun-26	-1 Day	Change
Last Price	97.75	96.66	1.09
DI+	9.71	8.27	1.44
DI-	64.21	72.42	(8.21)
ADX (15D)	38.54	36.03	2.51
A/D	-9,574.55	-10,469.76	895.21
CMF(20D)	-0.360	-0.404	0.04
CCI	-122.64	-157.43	34.78
Volume (IDR bn)	1,104.77	1,345.68	(240.91)
Frequency	167	356	(189)

COMMENT

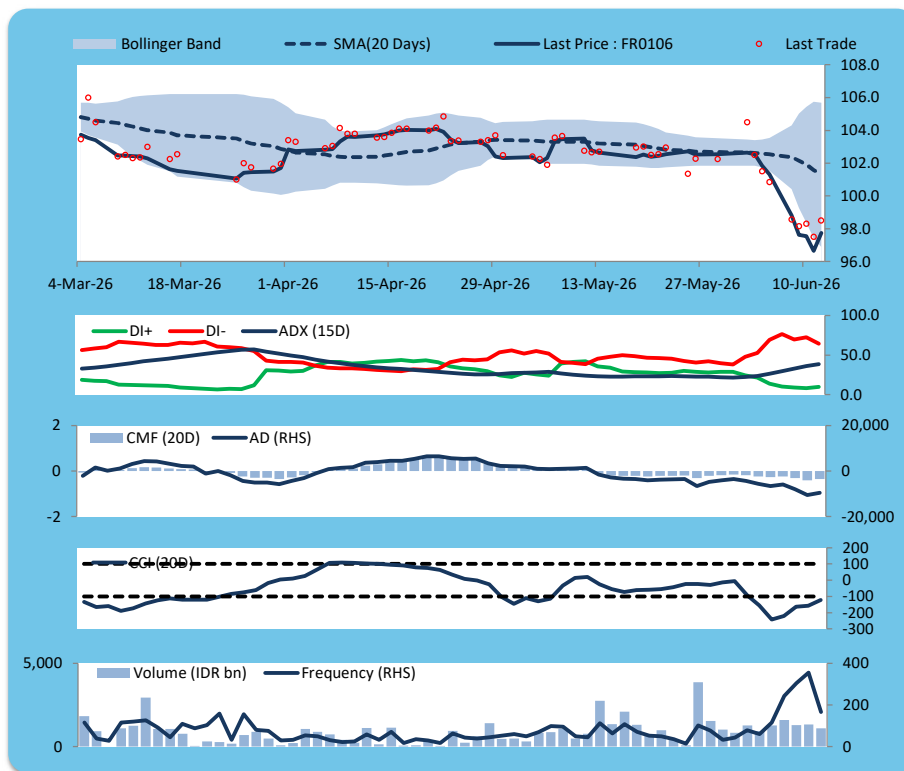
Price increased; heavy trade volume; upward trend continues to strengthen; selling pressure eased; CCI increased.

BUY

FEATURES

Issue Date	9-Jan-25
Mature Date	15-Aug-40
Tenor	14.2
Coupon Rate	7.13
Last Yield	7.38
Modified Duration	8.56
Previous Coupon Date	15-Feb-26
Next Coupon Date	15-Aug-26

Sources: Bloomberg (Price); IDX



FR0107

INDICATORS	12-Jun-26	-1 Day	Change
Last Price	97.26	97.13	0.13
DI+	7.13	8.15	(1.02)
DI-	73.33	71.18	2.15
ADX (15D)	43.66	40.91	2.76
A/D	-7,241.78	-6,979.51	(262.27)
CMF(20D)	-0.366	-0.348	(0.02)
CCI	-131.77	-147.03	15.26
Volume (IDR bn)	984.59	879.38	105.21
Frequency	236	285	(49)

COMMENT

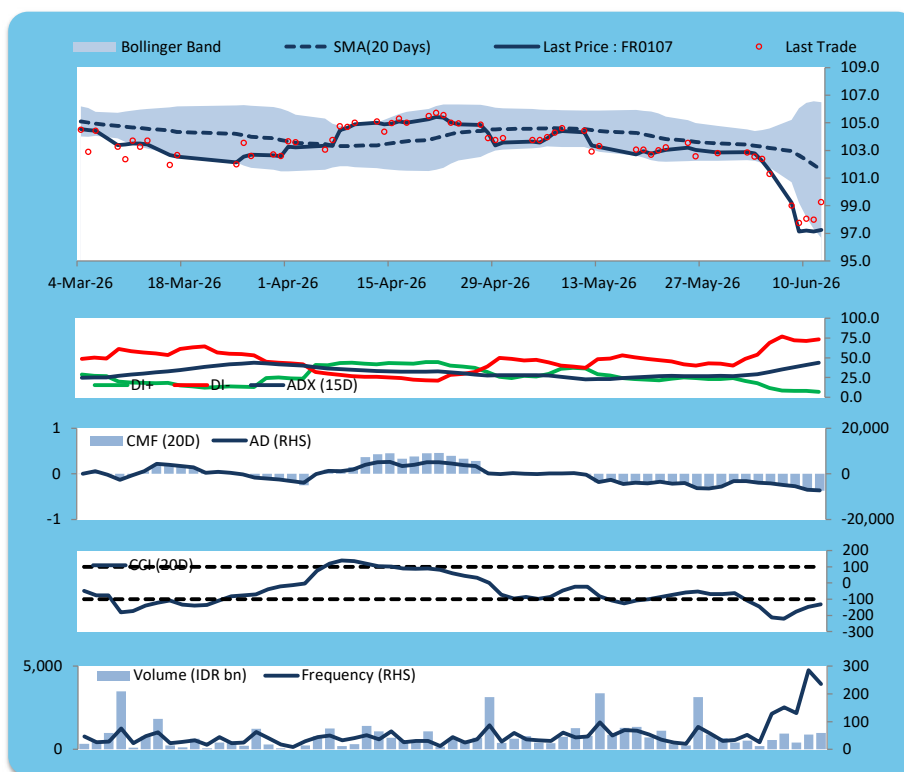
Price increased; heavy trade volume; downward trend continues to strengthen; selling pressure increased; CCI increased.

HOLD

FEATURES

Issue Date	9-Jan-25
Mature Date	15-Aug-45
Tenor (year)	19.2
Coupon Rate	7.13
Last Yield	7.39
Modified Duration	10.01
Previous Coupon Date	15-Feb-26
Next Coupon Date	15-Aug-26

Sources: Bloomberg (Price); IDX



**ECONOMIC AND FIXED INCOME RESEARCH TEAM****Chief Economist and Head Fixed Income Research**

Helmy Kristanto	helmy.kristanto@brids.co.id	(62-21) 5091 4100 ext. 3400
-----------------	-----------------------------	-----------------------------

**Economists**

Relindya Yuriswari Salehaningtyas	relindya.salehaningtyas@brids.co.id	(62-21) 5091 4100 ext. 3609
Ebenezer Mesotuhu Harefa	ebenezer.harefa@brids.co.id	(62-21) 5091 4100 ext. 3609

**Credit Analyst**

Laras Nerpatari Suliyas	laras.nerpatari@brids.co.id	(62-21) 5091 4100 ext. 3403
-------------------------	-----------------------------	-----------------------------

**Production & Database Management**

Eka Nuraini	ekan@brids.co.id	(62-21) 5091 4100 ext. 3407
Faiqul Kurnia Muslim	faiqul.muslim@brids.co.id	(62-21) 5091 4100 ext. 3402

**INSTITUTIONAL DEBT SALES & TRADING TEAM****Head of Debt Capital Market**

Yopi Chandra Wardhani	yopi.wardhani@brids.co.id	(62-21) 5091 4100 ext. 3220
-----------------------	---------------------------	-----------------------------

**Debt Sales**

Rachmat Eko Putranto	rachmat.putranto@brids.co.id	(62-21) 5091 4100 ext. 3218
Rafi Hutama Soeriaatmadja	rafi.soeriaatmadja@brids.co.id	(62-21) 5091 4100 ext. 3926
Adzkia Zahra	adzkia.zahra@brids.co.id	(62-21) 5091 4100 ext. 3924

**Debt Brokerage**

Citra Isramij P.	citra.isramij@brids.co.id	(62-21) 5091 4100 ext. 3228
Sisca Emilia	sisca.emilia@brids.co.id	(62-21) 5091 4100 ext. 3921
Deviano Sujitno	deviano.sujitno@brids.co.id	(62-21) 5091 4100 ext. 3925

**DISCLAIMER:** The information contained in this report has been taken from sources which we deem reliable. However, none of P.T. BRI Danareksa Sekuritas and/or its affiliated companies and/or their respective employees and/or agents makes any representation or warranty (express or implied) or accepts any responsibility or liability as to, or in relation to, the accuracy or completeness of the information and opinions contained in this report or as to any information contained in this report or any other such information or opinions remaining unchanged after the issue thereof. We expressly disclaim any responsibility or liability (express or implied) of P.T. BRI Danareksa Sekuritas, its affiliated companies and their respective employees and agents whatsoever and howsoever arising (including, without limitation for any claims, proceedings, action, suits, losses, expenses, damages or costs) which may be brought against or suffered by any person as a result of acting in reliance upon the whole or any part of the contents of this report and neither P.T. BRI Danareksa Sekuritas, its affiliated companies or their respective employees or agents accepts liability for any errors, omissions or mis-statements, negligent or otherwise, in the report and any liability in respect of the report or any inaccuracy therein or omission therefrom which might otherwise arise is hereby expressly disclaimed. The information contained in this report is not to be taken as any recommendation made by P.T. BRI Danareksa Sekuritas or any other person to enter into any agreement with regard to any investment mentioned in this document. This report is prepared for general circulation. It does not have regard to the specific person who may receive this report. In considering any investments you should make your own independent assessment and seek your own professional financial and legal advice.