

MOST ACTIVE GOVERNMENT BONDS

Bond	Coupon	Maturity	Last Price	Yield	Volume (IDR bn)
FR0104	6.500	15-Jul-30	99.25	7.393	5,265.70
FR0109	5.875	15-Mar-31	93.85	7.424	2,679.66
PBS032	4.875	15-Jul-26	99.83	6.823	2,392.94
PBS038	6.875	15-Dec-49	94.70	6.891	1,706.57
FR0106	7.125	15-Aug-40	97.50	7.502	1,345.68
FR0108	6.500	15-Apr-36	95.25	7.406	910.56
FR0107	7.125	15-Aug-45	98.00	7.406	879.38
FR0087	6.500	15-Feb-31	96.20	7.424	874.16
PBS003	6.000	15-Jan-27	99.38	7.049	688.68
FR0072	8.250	15-May-36	105.32	7.422	651.79

Coupon, Last Price & Yield are in %; Volume is in IDR bn; Rating code: id(Pefindo) & idn (Fitch Indonesia)
Sources: Bloomberg; Indonesia Stock Exchange (Volume)

MOST ACTIVE CORPORATE BONDS

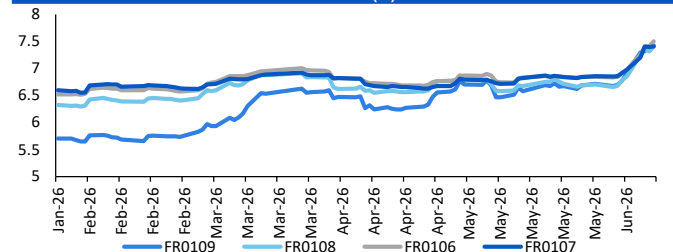
Bond	Rating	Coupon	Maturity	Last Price	Yield	Volume
FIFA06BCN4	AAA	6.900	6-Sep-27	98.70	8.01	410.00
SMII04BCN3	AAA	6.750	27-Mar-28	97.20	8.45	282.00
SMPNMP01ASECN1	AAA	6.250	18-Jul-26	100.12	6.24	240.00
INKP04BCN2	A+	10.250	25-Aug-26	100.37	10.21	237.00
SIBALI01BCN3	A	7.250	5-Dec-28	97.04	8.59	223.00
SMMMA03CN1	BBB+	10.000	5-Apr-29	105.55	7.78	215.00
SITBIG01ACN3	AA+	5.700	12-Feb-29	94.82	7.87	200.00
WSKT03BCN2	idBBB	8.250	31-Dec-34	95.00	9.10	192.80
LPPI02BCN2	A	10.500	6-Oct-26	100.60	10.44	168.40
SISMDR01CN3	A+	8.250	21-May-29	101.00	7.86	165.00

SOVEREIGN BOND YIELDS

Country	Tenor	Coupon (%)	MA LTM as of			Spread over UST YC (bps)		
			11-Jun-26	of May	Apr	11-Jun-26	May	Apr
United States	2yr		4.18	4.05	3.89			
USD	5yr		4.26	4.14	4.01			
	10yr		4.53	4.44	4.37			
German	2yr	0.25	2.70	2.53	2.64	-143	-148	-123
EUR	5yr	1.00	2.79	2.64	2.75	-147	-151	-126
	10yr	1.75	3.06	2.94	3.04	-147	-150	-134
Indonesia	2yr	3.50	-	4.18	4.20	-	18	32
USD	5yr	3.85	-	4.73	4.57	-	59	56
	10yr	6.63	-	5.50	5.35	-	106	98
Brazil	2yr	0.00	14.90	13.82	13.71	1,077	982	984
BRL	3yr	0.00	15.01	13.94	13.81	1,088	994	994
	10yr	10.00	14.81	14.12	13.98	1,069	1,012	1,010
Philippines	2yr	6.00	6.63	6.85	5.83	250	285	195
PHP	5yr	7.88	7.49	7.45	6.84	323	331	283
	10yr	11.38	7.45	7.42	6.92	292	298	254
Thailand	2yr	3.13	1.20	1.24	1.24	-293	-276	-264
THB	5yr	3.45	1.67	1.68	1.61	-259	-246	-240
	10yr	3.63	2.27	2.33	2.20	-226	-211	-218
India	2yr	7.59	6.32	6.42	6.26	219	241	239
INR	5yr	7.28	6.56	6.82	6.77	230	268	277
	10yr	8.83	6.93	7.01	7.04	240	257	266
Malaysia	3yr	3.17	3.27	3.24	3.21	-92	-82	-68
MYR	5yr	3.26	3.44	3.41	3.36	-82	-74	-65
	10yr	4.18	3.60	3.58	3.57	-93	-86	-80

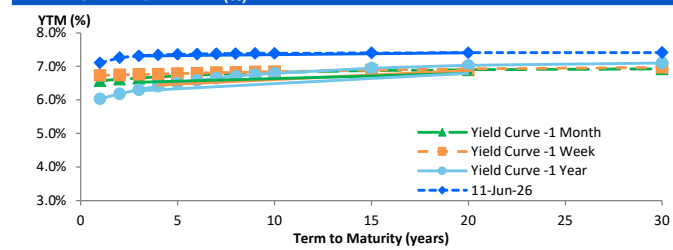
Sources: Bloomberg (Current Yield Curve), US Treasury

YIELD OF GOVERNMENT BOND BENCHMARK (%)



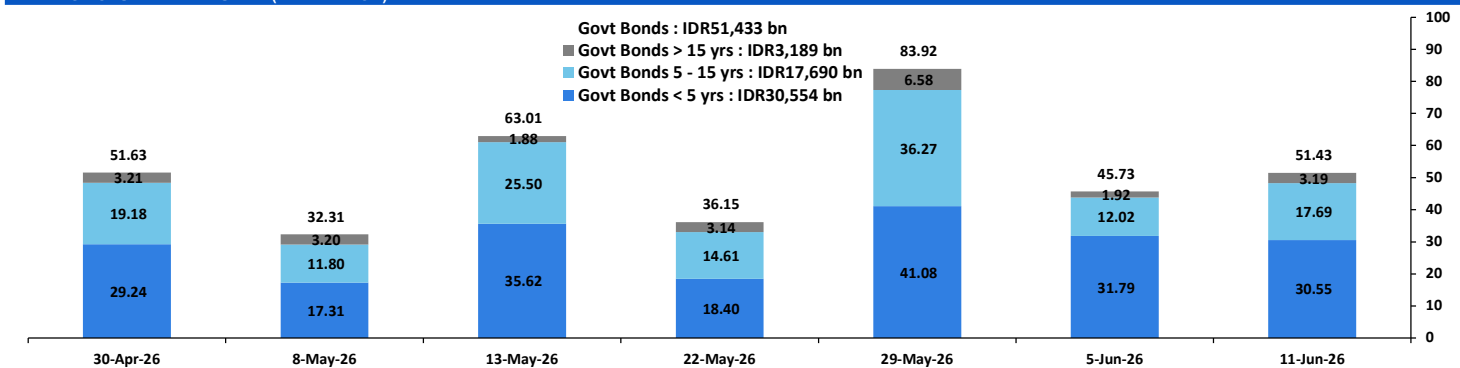
Source: Bloomberg

YIELD CURVE MOVEMENT (%)



Source: Bloomberg

TRADING VOLUME BY MATURITY (IDR TRILLION)



Sources: Indonesia Stock Exchange

CURRENCY

Price	11-Jun-26	-1 Day	-1 Week	-1 Month	EoP2025	
DX	100.09	↑	99.95	99.41	97.96	98.32
USD/IDR	17,993	↑	17,953	18,033	17,412	16,690
EUR/USD	1.15	→	1.15	1.16	1.18	1.17
USD/JPY	160.54	↓	160.55	160.02	157.19	156.71
USD/CNY	6.779	↑	6.775	6.775	6.796	6.988
USD/MYR	4.070	↓	4.070	4.012	3.925	4.060
SGD/IDR	13,967	↑	13,927	14,051	13,720	12,969

Source: Bloomberg

COMMODITY

Price	11-Jun-26	-1 Day	-1 Week	-1 Month	EoP2025	
CPO (Palm Oil)	4,496	↑	4,454	4,531	4,495	3,998
Coal	150.95	→	150.95	147.55	130.85	107.50
Gold (XAU/USD)	4,086	↑	4,072	4,475	4,736	4,319
Nickel	17,458	↓	18,381	18,494	19,069	16,546
Copper	621.55	↓	626.70	653.50	641.35	568.20
Brent	92.22	↓	93.10	95.03	104.21	60.85
WTI	89.26	↓	90.03	93.04	98.07	57.42

PHEI FAIR SPREAD

	1Y	2Y	3Y	4Y	5Y	6Y	7Y	8Y	9Y	10Y
AAA	28	39	47	52	56	58	59	60	61	62
AA+	36	46	54	58	61	62	63	64	65	65
AA	55	66	73	77	79	80	81	82	83	84
AA-	91	106	113	117	119	121	123	125	127	128
A+	141	161	168	173	177	180	184	187	189	191
A	195	220	230	236	242	248	254	258	262	264
A-	246	277	289	299	308	318	325	332	336	339
BBB+	296	330	346	360	374	387	397	405	410	414
BBB	344	382	402	421	439	455	468	478	484	488

*interpolated, as of June 11, 2026 (bps)

Sources: PHEI, Bloomberg

SBN HOLDING - (IDR tn)

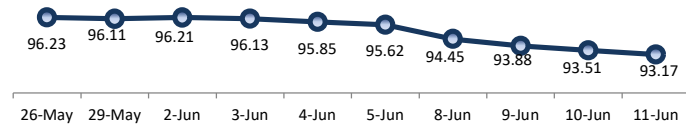
	09-Jun-2026	WoW	Mtd	YTD
Banks	1,206.1	(5.7)	(18.9)	(122.6)
Bank Indonesia (exclude repo)	1,870.6	(2.5)	22.8	229.0
Non-Banks:				
Mutual Fund	259.9	2.3	5.4	16.9
Insurance & Pension Fund	1,402.6	2.5	12.2	112.0
Foreign Investor	868.9	1.0	5.7	(9.8)
Individual	552.7	(0.3)	(0.2)	15.3
Others	721.5	7.6	8.3	72.6
Total	6,882.3	4.9	35.4	313.5
Domestic Investor	4,142.8	6.4	6.9	94.3
Foreign Investor	868.9	1.0	5.7	(9.8)
Bank Indonesia (include repo)	1,721.8	0.7	2.5	81.2

Source: DJPPR (Processed)

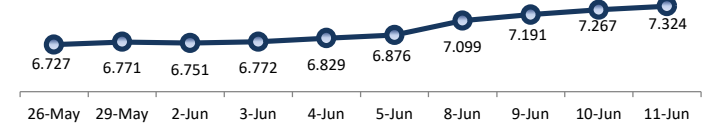
VALUATIONS OF GOVERNMENT BONDS

Bond	Issue Date	Mature Date	Coupon	TTM	Modified Duration	YTM	(Change)	Prev Closing Price	Fair Yield		Fair Price		Last Trade			
									Range	Range	Date	Price	Vol (IDR bn)	Freq		
FR0056	23-Sep-10	15-Sep-26	8.38	0.3	0.25	6.95	↓ -1.1bps	100.33	5.897	6.443	100.46	100.61	11-Jun-26	100.25	542.80	20
FR0090	8-Jul-21	15-Apr-27	5.13	0.8	0.80	7.07	↓ -2.2bps	98.44	6.897	7.196	98.32	98.56	11-Jun-26	99.90	467.05	77
FR0059	15-Sep-11	15-May-27	7.00	0.9	0.88	7.14	↑ 0.5bps	99.87	6.926	7.335	99.70	100.06	11-Jun-26	99.89	438.86	94
FR0042	25-Jan-07	15-Jul-27	10.25	1.1	0.99	7.13	↓ -1.5bps	103.21	6.915	7.334	103.00	103.44	8-Jun-26	102.97	0.00	1
FR0094	4-Mar-22	15-Jan-28	5.60	1.6	1.46	6.83	↑ 75.4bps	98.17	6.336	6.882	98.09	98.89	9-Jun-26	97.35	0.20	2
FR0047	30-Aug-07	15-Feb-28	10.00	1.7	1.49	7.09	↑ 0.4bps	104.50	7.044	7.361	104.08	104.59	11-Jun-26	104.55	15.23	5
FR0064	13-Aug-12	15-May-28	6.13	1.9	1.77	7.25	↑ 6.1bps	98.02	7.090	7.356	97.82	98.28	11-Jun-26	97.80	195.06	39
FR0095	19-Aug-22	15-Aug-28	6.38	2.2	1.96	7.26	↑ 1.9bps	98.24	7.050	7.365	98.03	98.65	11-Jun-26	98.80	215.09	43
FR0099	27-Jan-23	15-Jan-29	6.40	2.6	2.29	6.62	→ 0.0bps	99.48	6.855	7.401	97.67	98.93	1-Jul-25	99.50	49.05	2
FR0071	12-Sep-13	15-Mar-29	9.00	2.8	2.38	7.25	↑ 7.0bps	104.26	7.107	7.366	104.00	104.65	11-Jun-26	104.18	69.89	16
FR0101	2-Nov-23	15-Apr-29	6.88	2.8	2.51	7.29	↑ 4.7bps	98.95	7.108	7.358	98.77	99.40	11-Jun-26	99.10	515.19	78
FR0078	27-Sep-18	15-May-29	8.25	2.9	2.55	7.37	↑ 5.9bps	102.27	7.135	7.411	102.16	102.89	11-Jun-26	102.12	243.91	32
FR0104	22-Aug-24	15-Jul-30	6.50	4.1	3.43	7.39	↑ 7.0bps	96.89	7.202	7.492	96.55	97.54	11-Jun-26	99.25	5,265.70	98
FR0052	20-Aug-09	15-Aug-30	10.50	4.2	3.32	6.98	→ 0.0bps	112.54	6.952	7.364	111.09	112.66	11-Jun-26	112.80	0.00	1
FR0082	1-Aug-19	15-Sep-30	7.00	4.3	3.57	7.25	↑ 2.9bps	99.08	7.131	7.393	98.57	99.51	11-Jun-26	99.75	344.23	168
FRSDG001	27-Oct-22	15-Oct-30	7.38	4.3	3.64	6.65	↑ 1.2bps	102.67	6.911	7.457	99.69	101.70	10-Jun-26	100.04	10.00	1
FR0087	13-Aug-20	15-Feb-31	6.50	4.7	3.87	7.42	↑ 5.8bps	96.40	7.171	7.528	95.99	97.36	11-Jun-26	96.20	874.16	73
FR0109	15-Aug-25	15-Mar-31	5.88	4.8	3.99	7.42	↑ 5.3bps	93.88	7.174	7.517	93.52	94.96	11-Jun-26	93.85	2,679.66	139
FR0085	4-May-20	15-Apr-31	7.75	4.8	3.97	6.66	→ 0.0bps	104.43	6.867	7.413	101.34	103.57	11-Jun-26	102.80	0.05	1
FR0073	6-Aug-15	15-May-31	8.75	4.9	3.96	7.41	↑ 6.8bps	105.43	7.033	7.475	105.17	107.04	11-Jun-26	105.13	7.05	8
FR0054	22-Jul-10	15-Jul-31	9.50	5.1	3.94	6.81	→ 0.0bps	111.41	6.928	7.474	108.44	110.87	11-Jun-26	109.40	0.52	4
FR0091	8-Jul-21	15-Apr-32	6.38	5.8	4.72	7.43	↑ 9.6bps	95.07	7.188	7.532	94.60	96.16	11-Jun-26	93.95	210.04	78
FR0058	21-Jul-11	15-Jun-32	8.25	6.0	4.53	7.40	→ 0.0bps	104.09	7.199	7.514	103.51	105.05	11-Jun-26	104.30	0.20	2
FR0074	10-Nov-16	15-Aug-32	7.50	6.2	4.77	7.37	↑ 2.3bps	100.62	7.188	7.481	100.08	101.52	11-Jun-26	99.75	1.94	9
FR0096	19-Aug-22	15-Feb-33	7.00	6.7	5.12	7.43	↑ 9.5bps	97.74	7.213	7.513	97.33	98.87	11-Jun-26	98.65	224.82	76
FR0065	30-Aug-12	15-May-33	6.63	6.9	5.41	7.41	↑ 49.8bps	95.79	7.023	7.526	95.19	97.84	11-Jun-26	95.10	35.20	36
FR0100	24-Aug-23	15-Feb-34	6.63	7.7	5.75	7.43	↑ 18.1bps	95.35	7.220	7.477	95.08	96.53	11-Jun-26	98.50	474.54	109
FR0068	1-Aug-13	15-Mar-34	8.38	7.8	5.61	7.34	↑ 1.5bps	105.99	7.250	7.474	105.21	106.57	11-Jun-26	105.75	351.85	43
FR0080	4-Jul-19	15-Jun-35	7.50	9.0	6.26	7.33	↑ 2.0bps	101.08	7.175	7.526	99.83	102.13	11-Jun-26	99.95	20.50	34
FR0103	29-Jul-25	15-Jul-35	6.75	9.1	6.46	7.42	↑ 4.4bps	95.63	7.197	7.527	94.94	97.05	11-Jun-26	95.00	299.95	84
FR0108	31-Jul-25	15-Apr-36	6.50	9.8	7.00	7.41	↑ 9.5bps	93.74	7.076	7.486	93.20	95.95	11-Jun-26	95.25	910.56	113
FR0072	9-Jul-15	15-May-36	8.25	9.9	6.77	7.42	↑ 8.5bps	105.73	7.123	7.500	104.96	107.92	11-Jun-26	105.32	651.79	56
FR0088	7-Jan-21	15-Jun-36	6.25	10.0	6.97	7.41	↑ 0.1bps	91.90	7.102	7.454	91.61	93.97	11-Jun-26	92.60	34.85	30
FR0045	24-May-07	15-May-37	9.75	10.9	6.95	7.59	↑ 48.1bps	115.86	7.087	7.472	116.80	120.01	11-Jun-26	115.56	5.00	1
FR0093	6-Jan-22	15-Jul-37	6.38	11.1	7.49	7.37	↓ -7.7bps	92.58	7.077	7.443	92.02	94.66	11-Jun-26	92.75	17.35	15
FR0075	10-Aug-17	15-May-38	7.50	11.9	7.87	6.91	→ 0.0bps	104.76	7.024	7.570	99.45	103.79	11-Jun-26	101.00	26.30	41
FR0098	15-Sep-22	15-Jun-38	7.13	12.0	7.64	7.49	↑ 11.0bps	97.15	7.238	7.517	96.94	99.10	11-Jun-26	96.78	157.45	106
FR0050	24-Jan-08	15-Jul-38	10.50	12.1	7.14	7.39	↓ -4.1bps	124.52	7.171	7.493	123.63	126.61	11-Jun-26	121.79	3.80	1
FR0079	7-Jan-19	15-Apr-39	8.38	12.8	7.91	7.39	↓ -8.3bps	108.05	7.279	7.498	107.14	109.03	11-Jun-26	105.00	17.82	26
FR0083	7-Nov-19	15-Apr-40	7.50	13.8	8.43	7.49	↑ 18.8bps	100.08	7.235	7.528	99.75	102.28	11-Jun-26	100.75	42.86	83
FR0106	9-Jan-25	15-Aug-40	7.13	14.2	8.53	7.50	↑ 10.2bps	96.73	7.204	7.524	96.54	99.29	11-Jun-26	97.50	1,345.68	356
FR0057	21-Apr-11	15-May-41	9.50	14.9	8.62	6.85	↓ -0.2bps	124.53	6.958	7.504	117.73	123.36	14-Apr-26	126.50	5.25	2
FR0062	9-Feb-12	15-Apr-42	6.38	15.8	9.46	7.41	↓ -5.7bps	90.44	7.213	7.500	89.66	92.15	11-Jun-26	93.00	6.97	17
FR0092	8-Jul-21	15-Jun-42	7.13	16.0	9.03	7.44	↑ 4.9bps	97.04	7.161	7.468	96.82	99.66	11-Jun-26	98.70	208.53	58
FR0097	19-Aug-22	15-Jun-43	7.13	17.0	9.30	7.47	↑ 23.1bps	96.74	7.184	7.429	97.09	99.42	11-Jun-26	98.75	114.99	33
FR0067	18-Jul-13	15-Feb-44	8.75	17.7	9.30	7.23	→ 0.0bps	115.05	7.140	7.517	111.93	116.00	10-Jun-26	114.51	1.40	1
FR0107	9-Jan-25	15-Aug-45	7.13	19.2	10.00	7.41	↑ 1.0bps	97.13	7.166	7.492	96.29	99.56	11-Jun-26	98.00	879.38	285
FR0076	22-Sep-17	15-May-48	7.38	21.9	10.69	7.44	↑ 3.0bps	99.28	7.257	7.454	99.15	101.28	11-Jun-26	101.95	36.23	71
FR0089	7-Jan-21	15-Aug-51	6.88	25.2	11.30	7.32	↑ 0.3bps	94.86	7.298	7.428	93.73	95.14	11-Jun-26	93.00	68.07	57
FR0102	5-Jan-24	15-Jul-54	6.88	28.1	11.60	7.36	↑ 0.7bps	94.27	7.237	7.474	93.00	95.66	11-Jun-26	95.50	102.29	78
FR0105	27-Aug-24	15-Jul-64	6.88	38.1	13.05	6.90	→ 0.0bps	99.68	6.959	7.505	92.11	98.87	14-Apr-25	99.00	0.10	1
ORI024T6	8-Nov-23	15-Oct-29	6.35	3.3	-	6.62	↓ -53.4bps	99.21	6.860	7.405	96.88	98.48	11-Jun-26	97.10	1.09	9
ORI025T6	28-Feb-24	15-Feb-30	6.40	3.7	-	7.15	↑ 44.2bps	97.60	6.874	7.317	97.05	98.46	11-Jun-26	97.55	3.64	11
ORI026T6	30-Oct-24	15-Oct-30	6.40	4.3	-	7.45	↑ 45.2bps	96.47	6.849	7.334	96.54	98.32	10-Jun-26	97.35	0.77	4
PBS003	2-Feb-12	15-Jan-27	6.00	0.6	0.56	7.05	↓ -0.4bps	99.40	5.627	6.173	99.89	100.21	11-Jun-26	99.38	688.68	118
PBS020	22-Oct-18	15-Oct-27	9.00	1.3	1.25	5.43	↑ 14.9bps	104.52	5.139	5.685	104.22	104.94	31-Jul-24	108.25	0.50	1
PBS018	4-Jun-18	15-May-28	7.63	1.9	1.76	6.70	↑ 14.4bps	101.64	6.051	6.597	101.82	102.82	3-Sep-19	99.29	2,000.00	2
PBS030	4-Jun-21	15-Jul-28	5.88	2.1	1.89	7.17	↑ 28.9bps	97.53	6.899	7.332	97.21	98.03	11-Jun-26	97.60	451.47	332
PBSG001	22-Sep-22	15-Sep-29	6.63	3.3	2.85	6.61	↓ -17.1bps	100.03	6.706	7.252	98.19	99.75	11-Jun-26	99.70	0.70	1
IFR0006	1-Apr-10	15-Mar-30	10.25	3.8	3.08	6.62	↑ 53.0bps	111.85	6.352	6.898	110.92	112.84	11-Mar-26	113.43	2.00	2
PBS023	15-May-19	15-May-30	8.13	3.9	3.33	6.29	→ 0.0bps									

PRICE INDEX



YIELD INDEX



TECHNICAL ANALYSIS

FR0109

INDICATORS	11-Jun-26	-1 Day	Change
Last Price	93.88	93.92	(0.04)
DI+	10.52	11.11	(0.59)
DI-	58.77	56.62	2.15
ADX (15D)	47.71	46.14	1.57
A/D	-29,824.28	-28,839.33	(984.96)
CMF(20D)	-0.395	-0.381	(0.01)
CCI	-148.97	-161.14	12.17
Volume (IDR bn)	2,679.66	2,603.84	75.81
Frequency	139	96	43

COMMENT

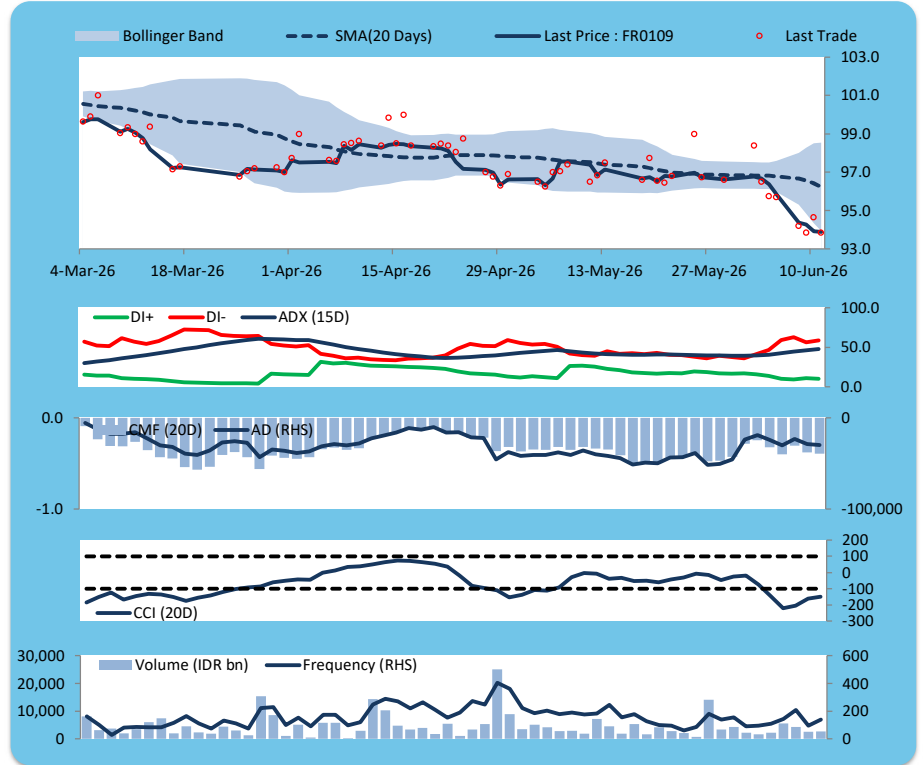
Price declined slightly; heavy trade volume; downward trend continues to weaken; selling pressure increased; CCI increased.

SELL

FEATURES

Issue Date	14-Aug-25
Mature Date	15-Mar-31
Tenor	4.8
Coupon Rate	5.88
Last Yield	7.42
Modified Duration	3.99
Previous Coupon Date	15-Mar-26
Next Coupon Date	15-Sep-26

Sources: Bloomberg (Price); IDX



FR0108

INDICATORS	11-Jun-26	-1 Day	Change
Last Price	93.74	94.36	(0.63)
DI+	11.91	12.90	(0.99)
DI-	64.29	61.31	2.98
ADX (15D)	31.24	28.56	2.68
A/D	-12,912.84	-10,400.39	(2,512.45)
CMF(20D)	-0.318	-0.248	(0.07)
CCI	-151.65	-154.35	2.70
Volume (IDR bn)	910.56	2,294.12	(1,383.57)
Frequency	113	146	(33)

COMMENT

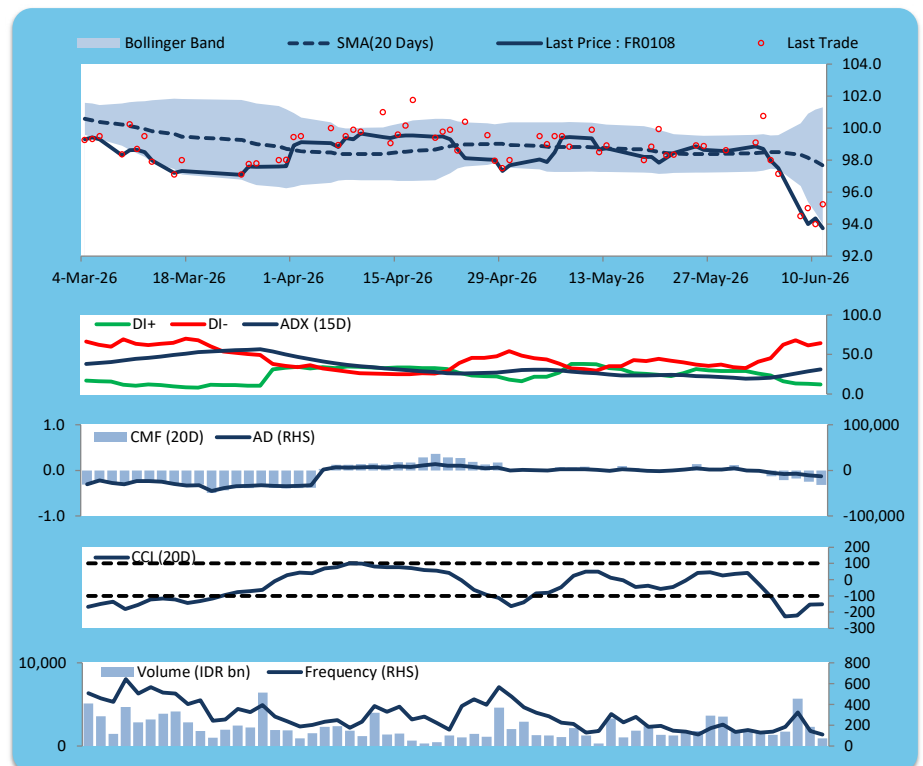
Price declined; heavy trade volume; downward trend continues to weaken; selling pressure increased; CCI increased.

SELL

FEATURES

Issue Date	31-Jul-25
Mature Date	15-Apr-36
Tenor	9.8
Coupon Rate	6.50
Last Yield	7.41
Modified Duration	7.00
Previous Coupon Date	15-Apr-26
Next Coupon Date	15-Oct-26

Sources: Bloomberg (Price); IDX



FR0106

INDICATORS	11-Jun-26	-1 Day	Change
Last Price	96.73	97.54	(0.81)
DI+	8.33	9.11	(0.78)
DI-	72.22	69.62	2.60
ADX (15D)	36.01	32.92	3.09
A/D	-10,476.06	-8,071.49	(2,404.57)
CMF(20D)	-0.404	-0.315	(0.09)
CCI	-156.40	-164.30	7.90
Volume (IDR bn)	1,345.68	1,291.00	54.68
Frequency	356	305	51

COMMENT

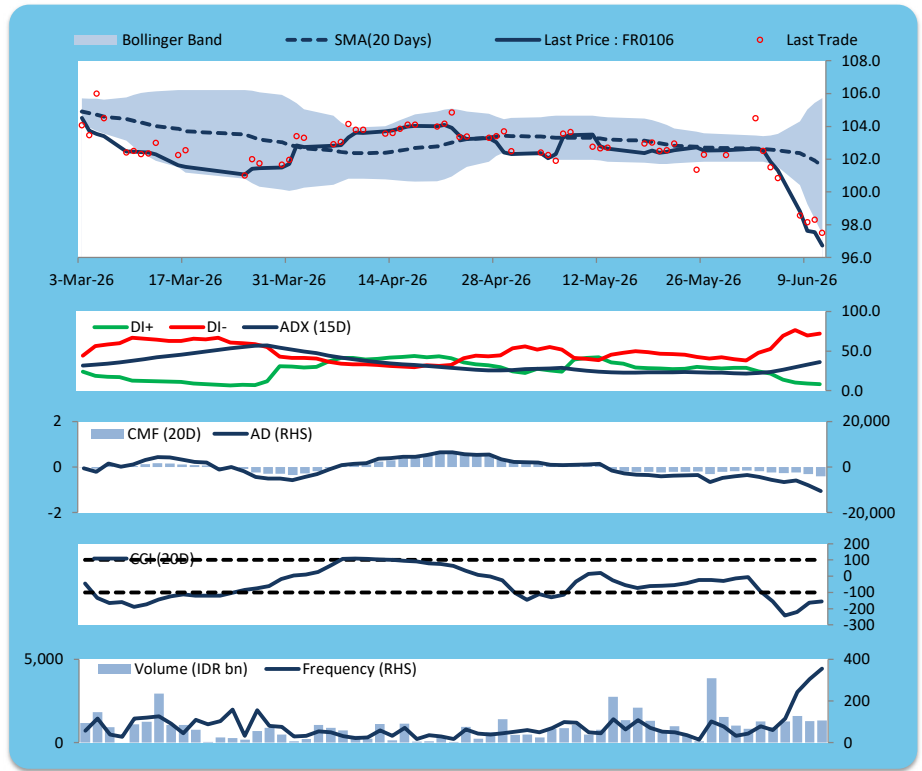
Price declined; heavy trade volume; downward trend continues to strengthen; selling pressure increased; CCI increased.

SELL

FEATURES

Issue Date	9-Jan-25
Mature Date	15-Aug-40
Tenor	14.2
Coupon Rate	7.13
Last Yield	7.50
Modified Duration	8.53
Previous Coupon Date	15-Feb-26
Next Coupon Date	15-Aug-26

Sources: Bloomberg (Price); IDX



FR0107

INDICATORS	11-Jun-26	-1 Day	Change
Last Price	97.13	97.22	(0.09)
DI+	8.15	8.26	(0.11)
DI-	71.18	72.13	(0.95)
ADX (15D)	40.91	38.15	2.75
A/D	-6,979.51	-5,344.84	(1,634.67)
CMF(20D)	-0.348	-0.268	(0.08)
CCI	-147.03	-176.13	29.11
Volume (IDR bn)	879.38	402.33	477.05
Frequency	285	131	154

COMMENT

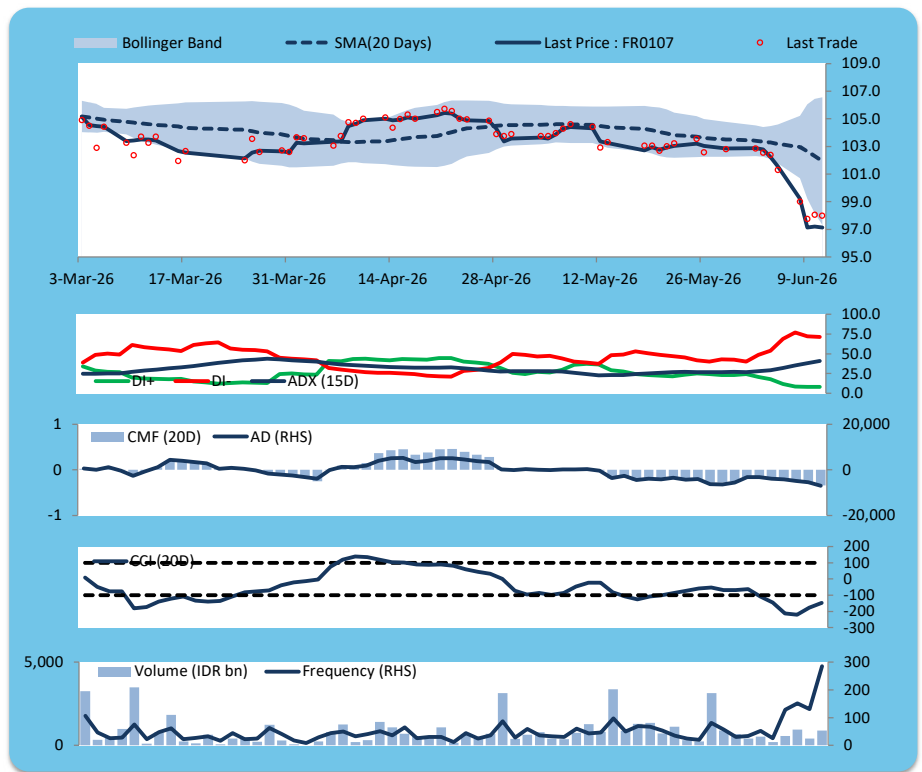
Price declined; heavy trade volume; upward trend continues to strengthen; selling pressure increased; CCI increased.

SELL

FEATURES

Issue Date	9-Jan-25
Mature Date	15-Aug-45
Tenor (year)	19.2
Coupon Rate	7.13
Last Yield	7.41
Modified Duration	10.00
Previous Coupon Date	15-Feb-26
Next Coupon Date	15-Aug-26

Sources: Bloomberg (Price); IDX



ECONOMIC AND FIXED INCOME RESEARCH TEAM**Chief Economist and Head Fixed Income Research**

Helmy Kristanto	helmy.kristanto@brids.co.id	(62-21) 5091 4100 ext. 3400
-----------------	-----------------------------	-----------------------------

Economists

Relindya Yuriswari Salehaningtyas	relindya.salehaningtyas@brids.co.id	(62-21) 5091 4100 ext. 3609
Ebenezer Mesotuhu Harefa	ebenezer.harefa@brids.co.id	(62-21) 5091 4100 ext. 3609

Credit Analyst

Laras Nerpatari Suliyas	laras.nerpatari@brids.co.id	(62-21) 5091 4100 ext. 3403
-------------------------	-----------------------------	-----------------------------

Production & Database Management

Eka Nuraini	ekan@brids.co.id	(62-21) 5091 4100 ext. 3407
Faiqul Kurnia Muslim	faiqul.muslim@brids.co.id	(62-21) 5091 4100 ext. 3402

INSTITUTIONAL DEBT SALES & TRADING TEAM**Head of Debt Capital Market**

Yopi Chandra Wardhani	yopi.wardhani@brids.co.id	(62-21) 5091 4100 ext. 3220
-----------------------	---------------------------	-----------------------------

Debt Sales

Rachmat Eko Putranto	rachmat.putranto@brids.co.id	(62-21) 5091 4100 ext. 3218
Rafi Hutama Soeriaatmadja	rafi.soeriaatmadja@brids.co.id	(62-21) 5091 4100 ext. 3926
Adzkia Zahra	adzkia.zahra@brids.co.id	(62-21) 5091 4100 ext. 3924

Debt Brokerage

Citra Isramij P.	citra.isramij@brids.co.id	(62-21) 5091 4100 ext. 3228
Sisca Emilia	sisca.emilia@brids.co.id	(62-21) 5091 4100 ext. 3921
Deviano Sujitno	deviano.sujitno@brids.co.id	(62-21) 5091 4100 ext. 3925

DISCLAIMER: The information contained in this report has been taken from sources which we deem reliable. However, none of P.T. BRI Danareksa Sekuritas and/or its affiliated companies and/or their respective employees and/or agents makes any representation or warranty (express or implied) or accepts any responsibility or liability as to, or in relation to, the accuracy or completeness of the information and opinions contained in this report or as to any information contained in this report or any other such information or opinions remaining unchanged after the issue thereof. We expressly disclaim any responsibility or liability (express or implied) of P.T. BRI Danareksa Sekuritas, its affiliated companies and their respective employees and agents whatsoever and howsoever arising (including, without limitation for any claims, proceedings, action, suits, losses, expenses, damages or costs) which may be brought against or suffered by any person as a result of acting in reliance upon the whole or any part of the contents of this report and neither P.T. BRI Danareksa Sekuritas, its affiliated companies or their respective employees or agents accepts liability for any errors, omissions or mis-statements, negligent or otherwise, in the report and any liability in respect of the report or any inaccuracy therein or omission therefrom which might otherwise arise is hereby expressly disclaimed. The information contained in this report is not to be taken as any recommendation made by P.T. BRI Danareksa Sekuritas or any other person to enter into any agreement with regard to any investment mentioned in this document. This report is prepared for general circulation. It does not have regard to the specific person who may receive this report. In considering any investments you should make your own independent assessment and seek your own professional financial and legal advice.