

MOST ACTIVE GOVERNMENT BONDS

Bond	Coupon	Maturity	Last Price	Yield	Volume (IDR bn)
FR0109	5.875	15-Mar-31	94.65	7.371	2,603.84
FR0108	6.500	15-Apr-36	94.00	7.311	2,294.12
FR0104	6.500	15-Jul-30	97.00	7.323	1,982.12
PBS038	6.875	15-Dec-49	97.75	6.891	1,843.59
FR0106	7.125	15-Aug-40	98.30	7.400	1,291.00
FR0087	6.500	15-Feb-31	96.55	7.366	1,087.26
PBSG001	6.625	15-Sep-29	98.21	6.782	978.25
FR0056	8.375	15-Sep-26	100.45	6.964	952.06
FR0071	9.000	15-Mar-29	104.15	7.184	648.20
FR0103	6.750	15-Jul-35	96.07	7.374	625.73

Coupon, Last Price & Yield are in %; Volume is in IDR bn; Rating code: id(Pefindo) & idn (Fitch Indonesia)
Sources: Bloomberg; Indonesia Stock Exchange (Volume)

MOST ACTIVE CORPORATE BONDS

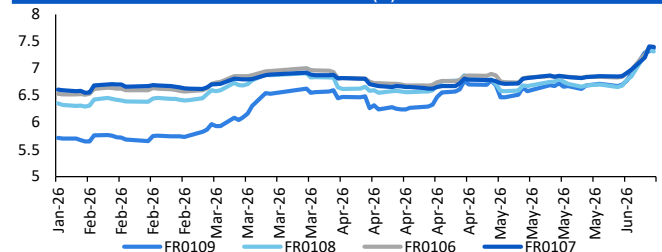
Bond	Rating	Coupon	Maturity	Last Price	Yield	Volume
SMINKP05ACN2	A+	9.000	10-Jun-29	100.02	8.99	1,578.10
INKP06ACN2	A+	9.000	10-Jun-29	100.00	9.00	1,158.77
SMINKP05BCN2	A+	9.500	10-Jun-31	100.02	9.49	1,140.10
INKP06BCN2	A+	9.500	10-Jun-31	100.00	9.50	359.08
BOLD03B	A+	8.000	10-Oct-28	98.51	8.71	253.00
SMLPPI02BCN2	A	7.250	24-Feb-31	96.50	8.15	245.00
SIBALI01BCN3	A	7.250	5-Dec-28	94.98	9.54	230.00
SMINKP04BCN1	A+	10.750	4-Oct-29	106.00	8.65	195.00
SIINET01A	A	9.000	15-Feb-27	99.15	9.08	192.00
ADMFO6BCN4	AAA	6.700	10-Oct-27	99.00	7.49	182.50

SOVEREIGN BOND YIELDS

Country	Tenor	Coupon (%)	MA LTM as of			Spread over UST YC (bps)		
			10-Jun-26	10-Jun-26	10-Jun-26	10-Jun-26	May	Apr
United States	2yr		4.19	4.05	3.89			
USD	5yr		4.26	4.14	4.01			
	10yr		4.53	4.44	4.37			
German	2yr	0.25	2.69	2.53	2.64	-144	-148	-123
EUR	5yr	1.00	2.78	2.64	2.75	-148	-151	-126
	10yr	1.75	3.06	2.94	3.04	-147	-150	-134
Indonesia	2yr	3.50	-	4.18	4.20	-	18	32
USD	5yr	3.85	-	4.73	4.57	-	59	56
	10yr	6.63	-	5.50	5.35	-	106	98
Brazil	2yr	0.00	14.90	13.82	13.71	1,076	982	984
BRL	3yr	0.00	14.98	13.94	13.81	1,085	994	994
	10yr	10.00	14.79	14.12	13.98	1,065	1,012	1,010
Philippines	2yr	6.00	6.70	6.85	5.83	257	285	195
PHP	5yr	7.88	7.49	7.45	6.84	323	331	283
	10yr	11.38	7.75	7.42	6.92	322	298	254
Thailand	2yr	3.13	1.21	1.24	1.24	-292	-276	-264
THB	5yr	3.45	1.68	1.68	1.61	-258	-246	-240
	10yr	3.63	2.29	2.33	2.20	-224	-211	-218
India	2yr	7.59	6.20	6.42	6.26	207	241	239
INR	5yr	7.28	6.55	6.82	6.77	230	268	277
	10yr	8.83	6.91	7.01	7.04	239	257	266
Malaysia	3yr	3.17	3.27	3.24	3.21	-92	-82	-68
MYR	5yr	3.26	3.45	3.41	3.36	-81	-74	-65
	10yr	4.18	3.61	3.58	3.57	-92	-86	-80

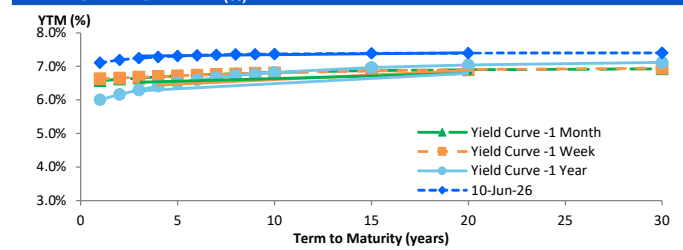
Sources: Bloomberg (Current Yield Curve), US Treasury

YIELD OF GOVERNMENT BOND BENCHMARK (%)



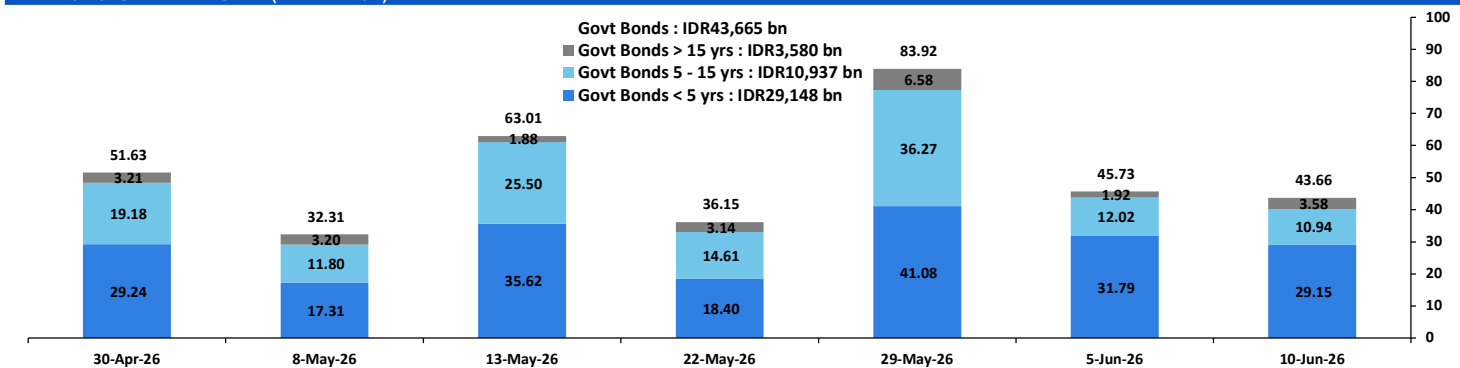
Source: Bloomberg

YIELD CURVE MOVEMENT (%)



Source: Bloomberg

TRADING VOLUME BY MATURITY (IDR TRILLION)



Sources: Indonesia Stock Exchange

CURRENCY

Price	10-Jun-26	-1 Day	-1 Week	-1 Month	EoP2025
DX	99.88	99.91	99.53	97.90	98.32
USD/IDR	17,953	18,060	17,950	17,373	16,690
EUR/USD	1.16	1.15	1.16	1.18	1.17
USD/JPY	160.42	160.36	160.07	156.68	156.71
USD/CNY	6.779	6.775	6.779	6.801	6.988
USD/MYR	4.065	4.060	3.999	3.921	4.060
SGD/IDR	13,927	14,007	14,003	13,706	12,969

Source: Bloomberg

COMMODITY

Price	10-Jun-26	-1 Day	-1 Week	-1 Month	EoP2025
CPO (Palm Oil)	4,471	4,505	4,605	4,478	3,998
Coal	149.75	150.20	146.25	131.75	107.50
Gold (XAU/USD)	4,174	4,261	4,435	4,715	4,319
Nickel	17,846	18,381	18,685	18,714	16,546
Copper	625.15	632.20	650.75	624.90	568.20
Brent	91.01	91.45	97.81	101.29	60.85
WTI	87.59	88.20	96.02	95.42	57.42

PHEI FAIR SPREAD

	1Y	2Y	3Y	4Y	5Y	6Y	7Y	8Y	9Y	10Y
AAA	27	43	48	51	54	57	59	61	62	62
AA+	36	49	54	57	60	62	64	64	65	66
AA	55	68	73	76	78	80	82	83	83	84
AA-	91	108	113	116	119	122	124	126	127	127
A+	141	163	168	172	176	181	185	187	189	191
A	194	223	230	235	242	249	254	259	262	264
A-	246	280	289	298	308	318	326	332	336	339
BBB+	296	333	346	360	374	387	397	405	410	414
BBB	344	385	402	420	439	456	469	478	484	488

*interpolated, as of June 10, 2026 (bps)

Sources: PHEI, Bloomberg

SBN HOLDING - (IDR tn)

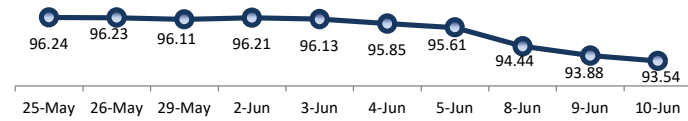
	08-Jun-2026	WoW	Mtd	YTD
Banks	1,202.4	(22.6)	(22.6)	(126.3)
Bank Indonesia (exclude repo)	1,876.2	28.4	28.4	234.6
Non-Banks:				
Mutual Fund	260.0	5.5	5.5	17.0
Insurance & Pension Fund	1,402.5	12.1	12.1	111.8
Foreign Investor	869.0	5.7	5.7	(9.7)
Individual	552.6	(0.2)	(0.2)	15.3
Others	719.7	6.4	6.4	70.8
Total	6,882.3	35.4	35.4	313.5
Domestic Investor	4,137.1	1.2	1.2	88.6
Foreign Investor	869.0	5.7	5.7	(9.7)
Bank Indonesia (include repo)	1,722.0	2.6	2.6	81.4

Source: DJPPR (Processed)

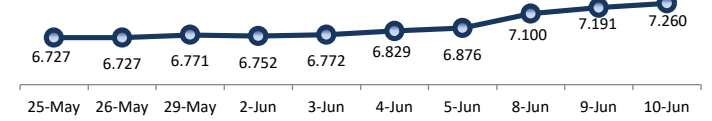
VALUATIONS OF GOVERNMENT BONDS

Bond	Issue Date	Mature Date	Coupon	TTM	Modified Duration	YTM	(Change)	Prev Closing Price	Fair Yield		Fair Price		Last Trade			
									Range	Range	Date	Price	Vol (IDR bn)	Freq		
FR0056	23-Sep-10	15-Sep-26	8.38	0.3	0.25	6.96	↑ 16.5bps	100.32	6.476	6.952	100.33	100.46	10-Jun-26	100.45	952.06	33
FR0090	8-Jul-21	15-Apr-27	5.13	0.8	0.81	7.10	↑ 4.5bps	98.41	6.972	7.268	98.26	98.50	10-Jun-26	97.95	65.19	56
FR0059	15-Sep-11	15-May-27	7.00	0.9	0.88	7.13	↑ 2.3bps	99.88	6.973	7.404	99.64	100.02	10-Jun-26	99.93	428.84	56
FR0042	25-Jan-07	15-Jul-27	10.25	1.1	0.99	7.14	↑ 2.9bps	103.20	7.000	7.343	103.00	103.36	8-Jun-26	102.97	0.00	1
FR0094	4-Mar-22	15-Jan-28	5.60	1.6	1.47	6.08	↑ 11.7bps	99.28	6.111	7.137	97.71	99.23	9-Jun-26	97.35	0.20	2
FR0047	30-Aug-07	15-Feb-28	10.00	1.7	1.49	7.09	↑ 6.7bps	104.51	7.074	7.359	104.09	104.54	10-Jun-26	105.05	0.02	1
FR0064	13-Aug-12	15-May-28	6.13	1.9	1.78	7.19	↑ 8.4bps	98.11	7.135	7.281	97.95	98.20	10-Jun-26	98.50	57.60	27
FR0095	19-Aug-22	15-Aug-28	6.38	2.2	1.96	7.24	↑ 5.9bps	98.27	7.073	7.285	98.18	98.60	10-Jun-26	97.45	268.73	59
FR0099	27-Jan-23	15-Jan-29	6.40	2.6	2.30	6.62	→ 0.0bps	99.48	6.716	7.573	97.27	99.25	1-Jul-25	99.50	49.05	2
FR0071	12-Sep-13	15-Mar-29	9.00	2.8	2.38	7.18	↓ -0.3bps	104.45	7.154	7.278	104.22	104.54	10-Jun-26	104.15	648.20	28
FR0101	2-Nov-23	15-Apr-29	6.88	2.8	2.52	7.24	↑ 7.7bps	99.06	7.138	7.281	98.96	99.32	10-Jun-26	99.50	561.88	77
FR0078	27-Sep-18	15-May-29	8.25	2.9	2.56	7.31	↑ 7.8bps	102.44	7.193	7.308	102.44	102.74	10-Jun-26	102.43	476.75	30
FR0104	22-Aug-24	15-Jul-30	6.50	4.1	3.43	7.32	↑ 8.3bps	97.13	7.240	7.418	96.80	97.41	10-Jun-26	97.00	1,982.12	148
FR0052	20-Aug-09	15-Aug-30	10.50	4.2	3.32	6.98	→ 0.0bps	112.54	7.005	7.316	111.28	112.46	8-Jun-26	113.22	3.00	4
FR0082	1-Aug-19	15-Sep-30	7.00	4.3	3.57	7.22	↑ 11.2bps	99.18	7.179	7.330	98.79	99.34	10-Jun-26	99.55	625.15	122
FRSDG001	27-Oct-22	15-Oct-30	7.38	4.3	3.65	6.64	↑ 1.1bps	102.72	6.768	7.661	98.94	102.24	10-Jun-26	100.04	10.00	1
FR0087	13-Aug-20	15-Feb-31	6.50	4.7	3.87	7.37	↑ 1.8bps	96.61	7.219	7.451	96.29	97.17	10-Jun-26	96.55	1,087.26	80
FR0109	15-Aug-25	15-Mar-31	5.88	4.8	4.00	7.37	↑ 5.8bps	94.08	7.173	7.458	93.75	94.83	10-Jun-26	94.65	2,603.84	96
FR0085	4-May-20	15-Apr-31	7.75	4.8	3.97	6.66	→ 0.0bps	104.43	6.812	7.526	100.88	103.80	10-Jun-26	102.90	0.01	1
FR0073	6-Aug-15	15-May-31	8.75	4.9	3.97	7.34	↑ 26.2bps	105.72	7.062	7.416	105.41	106.92	10-Jun-26	105.20	261.65	27
FR0054	22-Jul-10	15-Jul-31	9.50	5.1	3.94	6.81	↓ -18.7bps	111.41	6.910	7.560	108.07	110.96	9-Jun-26	109.25	0.32	4
FR0091	8-Jul-21	15-Apr-32	6.38	5.8	4.73	7.33	↓ -1.6bps	95.51	7.240	7.476	94.85	95.92	10-Jun-26	95.32	218.09	66
FR0058	21-Jul-11	15-Jun-32	8.25	6.0	4.54	7.40	↓ -4.4bps	104.09	7.256	7.489	103.63	104.77	10-Jun-26	106.90	120.16	10
FR0074	10-Nov-16	15-Aug-32	7.50	6.2	4.77	7.35	↓ -0.8bps	100.74	7.235	7.446	100.25	101.29	10-Jun-26	101.95	19.60	24
FR0096	19-Aug-22	15-Feb-33	7.00	6.7	5.13	7.34	↓ -1.0bps	98.23	7.280	7.448	97.66	98.52	10-Jun-26	99.10	323.27	134
FR0065	30-Aug-12	15-May-33	6.63	6.9	5.44	6.91	↑ 4.5bps	98.43	7.024	7.549	95.10	97.83	10-Jun-26	97.90	40.75	85
FR0100	24-Aug-23	15-Feb-34	6.63	7.7	5.77	7.25	↑ 16.2bps	96.37	7.278	7.432	95.32	96.19	10-Jun-26	94.95	118.82	146
FR0068	1-Aug-13	15-Mar-34	8.38	7.8	5.61	7.33	↓ -3.0bps	106.09	7.314	7.436	105.44	106.18	10-Jun-26	106.00	313.03	48
FR0080	4-Jul-19	15-Jun-35	7.50	9.0	6.26	7.31	↓ -11.2bps	101.21	7.248	7.950	100.03	101.65	10-Jun-26	100.82	115.97	49
FR0103	29-Jul-25	15-Jul-35	6.75	9.1	6.46	7.37	↑ 0.4bps	95.91	7.258	7.495	95.14	96.65	10-Jun-26	96.07	625.73	63
FR0108	31-Jul-25	15-Apr-36	6.50	9.8	7.01	7.31	↓ -5.4bps	94.36	7.135	7.461	93.37	95.55	10-Jun-26	94.00	2,294.12	146
FR0072	9-Jul-15	15-May-36	8.25	9.9	6.78	7.34	↑ 47.6bps	106.35	7.147	7.548	104.83	107.74	10-Jun-26	106.50	275.78	59
FR0088	7-Jan-21	15-Jun-36	6.25	10.0	6.97	7.41	↑ 4.5bps	91.90	7.188	7.402	91.95	93.39	10-Jun-26	91.60	33.26	40
FR0045	24-May-07	15-May-37	9.75	10.9	7.03	7.10	→ 0.0bps	119.87	7.226	7.574	115.97	118.84	8-Jun-26	119.97	0.01	1
FR0093	6-Jan-22	15-Jul-37	6.38	11.1	7.48	7.44	↑ 57.3bps	92.03	7.102	7.461	91.89	94.47	10-Jun-26	94.50	36.13	18
FR0075	10-Aug-17	15-May-38	7.50	11.9	7.87	6.91	↑ 1.5bps	104.76	7.073	7.635	98.95	103.39	10-Jun-26	100.41	35.87	36
FR0098	15-Sep-22	15-Jun-38	7.13	12.0	7.66	7.38	↑ 10.2bps	98.00	7.299	7.508	97.00	98.62	10-Jun-26	100.55	29.56	49
FR0050	24-Jan-08	15-Jul-38	10.50	12.1	7.13	7.44	↑ 59.2bps	124.16	7.228	7.512	123.46	126.08	10-Jun-26	128.90	0.00	2
FR0079	7-Jan-19	15-Apr-39	8.38	12.8	7.89	7.47	↑ 0.6bps	107.34	7.325	7.516	106.98	108.63	10-Jun-26	107.52	337.67	56
FR0083	7-Nov-19	15-Apr-40	7.50	13.8	8.48	7.30	→ 0.0bps	101.70	7.302	7.510	99.90	101.70	10-Jun-26	101.65	221.32	104
FR0106	9-Jan-25	15-Aug-40	7.13	14.2	8.56	7.40	↓ -3.9bps	97.60	7.271	7.502	96.73	98.71	10-Jun-26	98.30	1,291.00	305
FR0057	21-Apr-11	15-May-41	9.50	14.9	8.62	6.85	↓ -0.3bps	124.52	7.009	7.585	116.92	122.82	14-Apr-26	126.50	5.25	2
FR0062	9-Feb-12	15-Apr-42	6.38	15.8	9.41	7.47	↑ 1.2bps	89.95	7.275	7.521	89.48	91.60	10-Jun-26	93.65	13.28	18
FR0092	8-Jul-21	15-Jun-42	7.13	16.0	9.05	7.40	↑ 46.1bps	97.49	7.199	7.499	96.54	99.31	10-Jun-26	97.89	29.26	47
FR0097	19-Aug-22	15-Jun-43	7.13	17.0	9.40	7.24	↑ 0.7bps	98.93	7.253	7.421	97.16	98.76	10-Jun-26	97.43	272.75	79
FR0067	18-Jul-13	15-Feb-44	8.75	17.7	9.30	7.23	↑ 31.8bps	115.05	7.164	7.590	111.17	115.75	10-Jun-26	114.51	1.40	1
FR0107	9-Jan-25	15-Aug-45	7.13	19.2	10.01	7.40	↓ -3.4bps	97.23	7.241	7.501	96.19	98.79	10-Jun-26	98.05	402.33	131
FR0076	22-Sep-17	15-May-48	7.38	21.9	10.71	7.41	↑ 3.5bps	99.60	7.347	7.459	99.09	100.30	10-Jun-26	96.00	29.02	81
FR0089	7-Jan-21	15-Aug-51	6.88	25.2	11.30	7.32	↑ 16.0bps	94.89	7.350	7.487	93.10	94.57	10-Jun-26	96.05	54.43	75
FR0102	5-Jan-24	15-Jul-54	6.88	28.1	11.61	7.35	↑ 2.9bps	94.36	7.333	7.490	92.82	94.57	10-Jun-26	94.85	451.56	167
FR0105	27-Aug-24	15-Jul-64	6.88	38.1	13.05	6.90	↑ 0.3bps	99.69	7.859	8.885	78.19	88.13	14-Apr-25	99.00	0.10	1
ORI024T6	8-Nov-23	15-Oct-29	6.35	3.3	-	7.15	↑ 1.3bps	97.63	7.019	7.278	97.25	98.01	10-Jun-26	96.00	0.85	8
ORI025T6	28-Feb-24	15-Feb-30	6.40	3.7	-	6.70	→ 0.0bps	99.01	6.780	7.361	96.91	98.76	10-Jun-26	96.60	0.28	5
ORI026T6	30-Oct-24	15-Oct-30	6.40	4.3	-	6.90	↓ -21.3bps	98.12	6.836	7.287	96.70	98.36	10-Jun-26	97.35	0.77	4
PBS003	2-Feb-12	15-Jan-27	6.00	0.6	0.56	7.05	↑ 12.8bps	99.39	6.654	7.114	99.35	99.62	10-Jun-26	99.40	230.52	83
PBS020	22-Oct-18	15-Oct-27	9.00	1.3	1.25	5.28	↑ 25.7bps	104.75	5.318	6.344	103.36	104.71	31-Jul-24	108.25	0.50	1
PBS018	4-Jun-18	15-May-28	7.63	1.9	1.77	6.55	↑ 27.7bps	101.90	6.186	6.920	101.25	102.57	3-Sep-19	99.29	2,000.00	2
PBS030	4-Jun-21	15-Jul-28	5.88	2.1	1.89	6.88	↓ -14.9bps	98.07	6.931	7.323	97.22	97.96	10-Jun-26	96.80	373.02	386
PBSG001	22-Sep-22	15-Sep-29	6.63	3.3	2.85	6.78	→ 0.0bps	99.53	6.681	7.315	98.01	99.82	10-Jun-26	98.21	978.25	9
IFR0006	1-Apr-10	15-Mar-30	10.25	3.8	3.10	6.09	↑ 9.1bps	113.76	6.133	7.080	110.29	113.63	11-Mar-26	113.43	2.00	2
PBS023	15-May-19	15-May-30	8.13	3.9	3.34	6.2										

PRICE INDEX



YIELD INDEX



TECHNICAL ANALYSIS

FR0109

INDICATORS	10-Jun-26	-1 Day	Change
Last Price	94.08	94.28	(0.20)
DI+	11.39	9.46	1.93
DI-	58.05	62.77	(4.71)
ADX (15D)	46.14	44.64	1.50
A/D	-28,839.33	-23,444.98	(5,394.35)
CMF(20D)	-0.381	-0.309	(0.07)
CCI	-156.35	-204.15	47.80
Volume (IDR bn)	2,603.84	4,318.62	(1,714.77)
Frequency	96	209	(113)

COMMENT

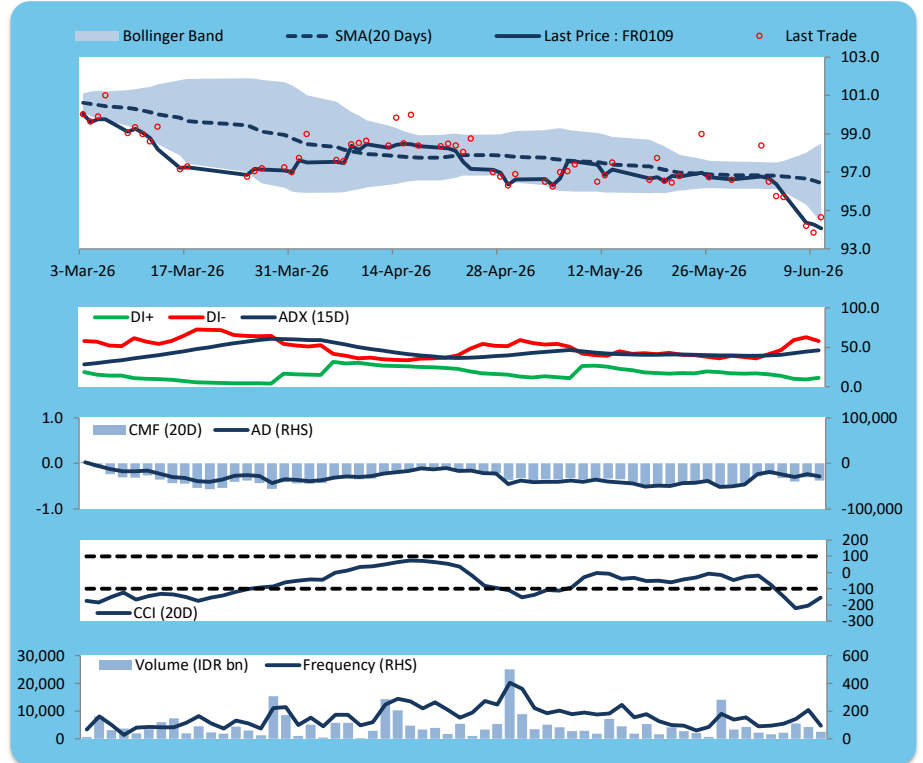
Price declined; heavy trade volume; upward trend continues to weaken; selling pressure increased; CCI increased.

SELL

FEATURES

Issue Date	14-Aug-25
Mature Date	15-Mar-31
Tenor	4.8
Coupon Rate	5.88
Last Yield	7.37
Modified Duration	4.00
Previous Coupon Date	15-Mar-26
Next Coupon Date	15-Sep-26

Sources: Bloomberg (Price); IDX



FR0108

INDICATORS	10-Jun-26	-1 Day	Change
Last Price	94.36	94.01	0.36
DI+	12.90	13.41	(0.51)
DI-	61.31	67.98	(6.67)
ADX (15D)	28.56	25.94	2.62
A/D	-10,400.39	-7,020.89	(3,379.50)
CMF(20D)	-0.248	-0.173	(0.08)
CCI	-154.35	-221.04	66.68
Volume (IDR bn)	2,294.12	5,680.69	(3,386.57)
Frequency	146	323	(177)

COMMENT

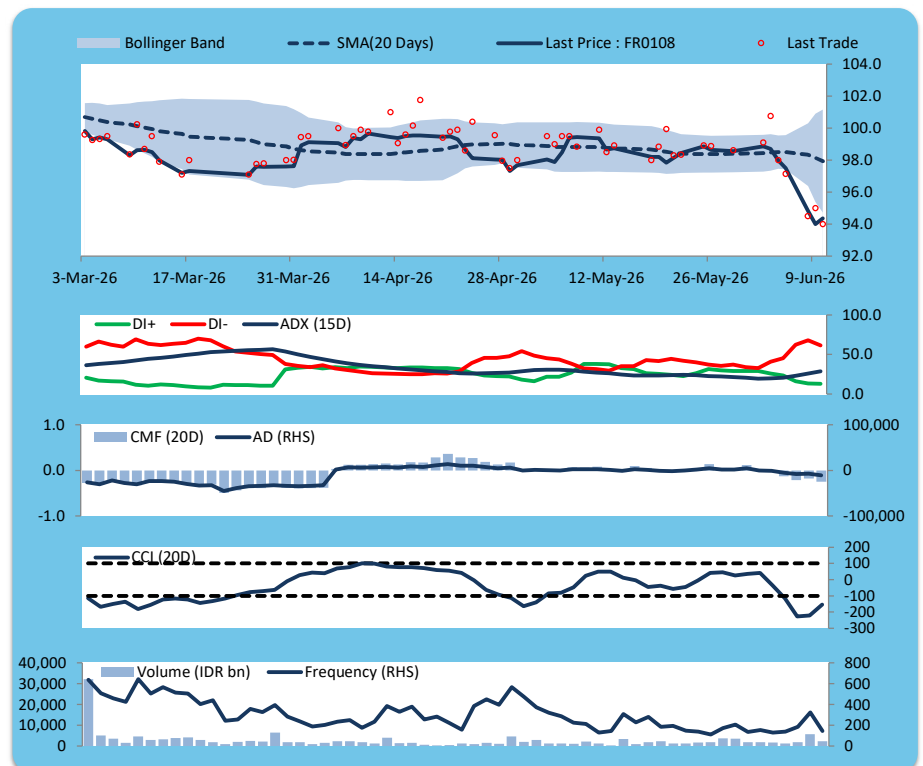
Price increased; heavy trade volume; upward trend continues to weaken; selling pressure increased; CCI increased.

HOLD

FEATURES

Issue Date	31-Jul-25
Mature Date	15-Apr-36
Tenor	9.8
Coupon Rate	6.50
Last Yield	7.31
Modified Duration	7.01
Previous Coupon Date	15-Apr-26
Next Coupon Date	15-Oct-26

Sources: Bloomberg (Price); IDX



FR0106

INDICATORS	10-Jun-26	-1 Day	Change
Last Price	97.60	97.63	(0.04)
DI+	9.17	10.03	(0.86)
DI-	70.01	76.58	(6.56)
ADX (15D)	32.92	29.78	3.14
A/D	-8,068.24	-5,911.92	(2,156.32)
CMF(20D)	-0.314	-0.234	(0.08)
CCI	-163.40	-220.07	56.67
Volume (IDR bn)	1,291.00	1,594.52	(303.52)
Frequency	305	243	62

COMMENT

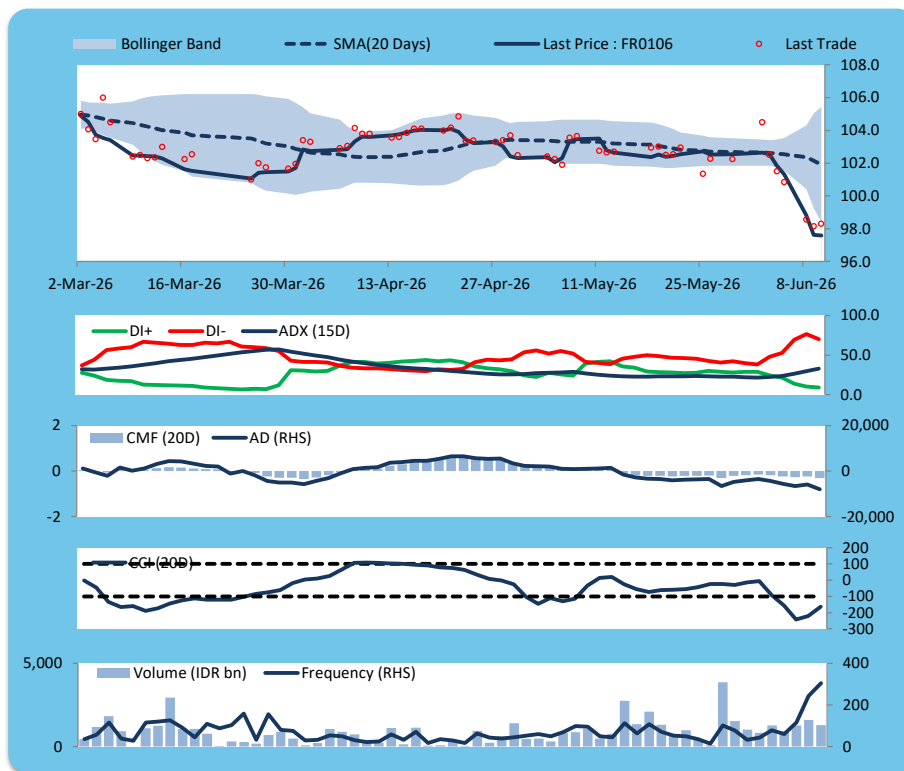
Price declined slightly; heavy trade volume; upward trend continues to strengthen; selling pressure increased; CCI increased.

SELL

FEATURES

Issue Date	9-Jan-25
Mature Date	15-Aug-40
Tenor	14.2
Coupon Rate	7.13
Last Yield	7.40
Modified Duration	8.56
Previous Coupon Date	15-Feb-26
Next Coupon Date	15-Aug-26

Sources: Bloomberg (Price); IDX



FR0107

INDICATORS	10-Jun-26	-1 Day	Change
Last Price	97.23	97.14	0.09
DI+	8.26	8.83	(0.57)
DI-	72.13	77.09	(4.96)
ADX (15D)	38.15	35.20	2.95
A/D	-5,326.71	-4,858.43	(468.28)
CMF(20D)	-0.267	-0.244	(0.02)
CCI	-176.05	-220.40	44.36
Volume (IDR bn)	402.33	944.22	(541.89)
Frequency	131	151	(20)

COMMENT

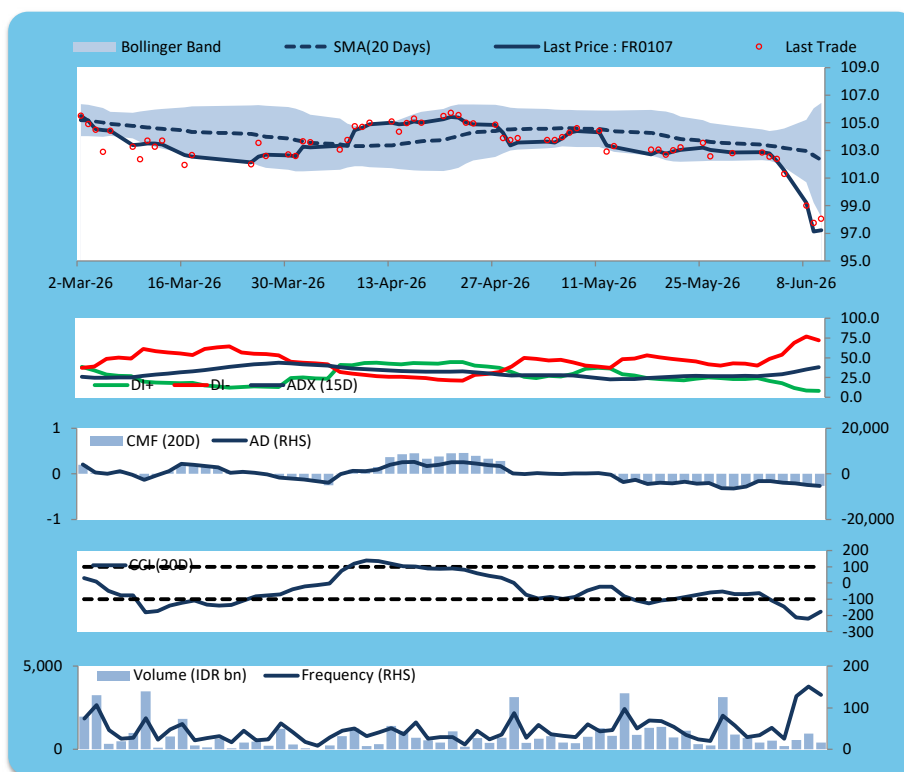
Price increased; moderate trade volume; upward trend continues to strengthen; selling pressure increased; CCI increased.

HOLD

FEATURES

Issue Date	9-Jan-25
Mature Date	15-Aug-45
Tenor (year)	19.2
Coupon Rate	7.13
Last Yield	7.40
Modified Duration	10.01
Previous Coupon Date	15-Feb-26
Next Coupon Date	15-Aug-26

Sources: Bloomberg (Price); IDX



ECONOMIC AND FIXED INCOME RESEARCH TEAM**Chief Economist and Head Fixed Income Research**

Helmy Kristanto	helmy.kristanto@brids.co.id	(62-21) 5091 4100 ext. 3400
-----------------	-----------------------------	-----------------------------

Economists

Relindya Yuriswari Salehaningtyas	relindya.salehaningtyas@brids.co.id	(62-21) 5091 4100 ext. 3609
Ebenezer Mesotuhu Harefa	ebenezer.harefa@brids.co.id	(62-21) 5091 4100 ext. 3609

Credit Analyst

Laras Nerpatari Suliyas	laras.nerpatari@brids.co.id	(62-21) 5091 4100 ext. 3403
-------------------------	-----------------------------	-----------------------------

Production & Database Management

Eka Nuraini	ekan@brids.co.id	(62-21) 5091 4100 ext. 3407
Faiqul Kurnia Muslim	faiqul.muslim@brids.co.id	(62-21) 5091 4100 ext. 3402

INSTITUTIONAL DEBT SALES & TRADING TEAM**Head of Debt Capital Market**

Yopi Chandra Wardhani	yopi.wardhani@brids.co.id	(62-21) 5091 4100 ext. 3220
-----------------------	---------------------------	-----------------------------

Debt Sales

Rachmat Eko Putranto	rachmat.putranto@brids.co.id	(62-21) 5091 4100 ext. 3218
Rafi Hutama Soeriaatmadja	rafi.soeriaatmadja@brids.co.id	(62-21) 5091 4100 ext. 3926
Adzkia Zahra	adzkia.zahra@brids.co.id	(62-21) 5091 4100 ext. 3924

Debt Brokerage

Citra Isramij P.	citra.isramij@brids.co.id	(62-21) 5091 4100 ext. 3228
Sisca Emilia	sisca.emilia@brids.co.id	(62-21) 5091 4100 ext. 3921
Deviano Sujitno	deviano.sujitno@brids.co.id	(62-21) 5091 4100 ext. 3925

DISCLAIMER: The information contained in this report has been taken from sources which we deem reliable. However, none of P.T. BRI Danareksa Sekuritas and/or its affiliated companies and/or their respective employees and/or agents makes any representation or warranty (express or implied) or accepts any responsibility or liability as to, or in relation to, the accuracy or completeness of the information and opinions contained in this report or as to any information contained in this report or any other such information or opinions remaining unchanged after the issue thereof. We expressly disclaim any responsibility or liability (express or implied) of P.T. BRI Danareksa Sekuritas, its affiliated companies and their respective employees and agents whatsoever and howsoever arising (including, without limitation for any claims, proceedings, action, suits, losses, expenses, damages or costs) which may be brought against or suffered by any person as a result of acting in reliance upon the whole or any part of the contents of this report and neither P.T. BRI Danareksa Sekuritas, its affiliated companies or their respective employees or agents accepts liability for any errors, omissions or mis-statements, negligent or otherwise, in the report and any liability in respect of the report or any inaccuracy therein or omission therefrom which might otherwise arise is hereby expressly disclaimed. The information contained in this report is not to be taken as any recommendation made by P.T. BRI Danareksa Sekuritas or any other person to enter into any agreement with regard to any investment mentioned in this document. This report is prepared for general circulation. It does not have regard to the specific person who may receive this report. In considering any investments you should make your own independent assessment and seek your own professional financial and legal advice.