

MOST ACTIVE GOVERNMENT BONDS

Bond	Coupon	Maturity	Last Price	Yield	Volume (IDR bn)
FR0103	6.750	15-Jul-35	96.15	7.370	11,977.11
FR0108	6.500	15-Apr-36	95.00	7.365	5,680.69
FR0109	5.875	15-Mar-31	93.85	7.313	4,318.62
FR0101	6.875	15-Apr-29	100.00	7.164	2,948.78
FR0106	7.125	15-Aug-40	98.15	7.439	1,594.52
FR0100	6.625	15-Feb-34	96.00	7.086	1,004.84
SPN12260910	-	10-Sep-26	98.31	-	997.08
FR0107	7.125	15-Aug-45	97.75	7.430	944.22
FR0082	7.000	15-Sep-30	98.30	7.110	769.00
FR0102	6.875	15-Jul-54	94.04	7.323	613.60

*Current yield; Coupon, Last Price & Yield are in %; Volume is in IDR bn; Rating code: id(Pefindo) & idn (Fitch Indonesia)

Sources: Bloomberg; Indonesia Stock Exchange (Volume)

MOST ACTIVE CORPORATE BONDS

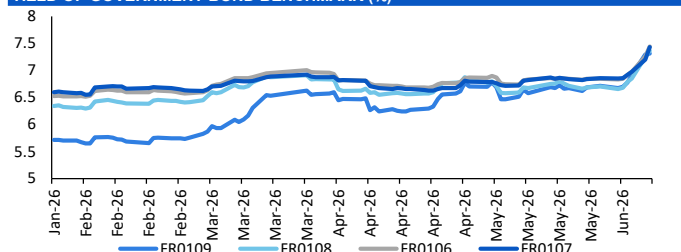
Bond	Rating	Coupon	Maturity	Last Price	Yield	Volume
SIBAL01BCN3	A	7.250	5-Dec-28	97.14	8.54	270.00
MBMA01BCN3	A	8.250	9-Dec-30	95.71	9.43	215.00
INKP04BCN4	A+	10.250	4-Apr-27	103.50	9.90	200.27
SISMDR01CN2	A+	8.850	4-Jul-30	99.92	8.87	199.00
SMMMA03CN1	BBB+	10.000	5-Apr-29	107.94	6.88	177.00
WISL03B	A	8.750	5-Jul-27	99.26	9.48	175.00
MBMA01ACN2	A	7.500	27-Aug-26	100.00	7.50	168.00
LPP02BCN2	A	10.500	6-Oct-26	100.71	10.43	166.00
SMMBMA01ACN2	A	7.500	27-Aug-26	100.42	7.47	164.00
SMDSSA01CCN3	AA	8.875	26-Nov-29	104.26	7.47	164.00

SOVEREIGN BOND YIELDS

Country	Tenor	Coupon (%)	9-Jun-26	MA LTM as of		Spread over UST YC (bps)		
				9-Jun-26	9-Jun-26	9-Jun-26	May	Apr
United States	2yr		4.20	4.05	3.89			
USD	5yr		4.27	4.14	4.01			
	10yr		4.55	4.44	4.37			
German	2yr	0.25	2.68	2.53	2.64	-147	-148	-123
EUR	5yr	1.00	2.77	2.64	2.75	-151	-151	-126
	10yr	1.75	3.05	2.94	3.04	-150	-150	-134
Indonesia	2yr	3.50	-	4.18	4.20	-	18	32
USD	5yr	3.85	-	4.73	4.57	-	59	56
	10yr	6.63	-	5.50	5.35	-	106	98
Brazil	2yr	0.00	14.88	13.82	13.71	1,073	982	984
BRL	3yr	0.00	15.02	13.94	13.81	1,087	994	994
	10yr	10.00	14.87	14.12	13.98	1,072	1,012	1,010
Philippines	2yr	6.00	6.75	6.85	5.83	261	285	195
PHP	5yr	7.88	7.49	7.45	6.84	321	331	283
	10yr	11.38	7.75	7.42	6.92	320	298	254
Thailand	2yr	3.13	1.24	1.24	1.24	-290	-276	-264
THB	5yr	3.45	1.71	1.68	1.61	-256	-246	-240
	10yr	3.63	2.31	2.33	2.20	-224	-211	-218
India	2yr	7.59	6.18	6.42	6.26	203	241	239
INR	5yr	7.28	6.54	6.82	6.77	227	268	277
	10yr	8.83	6.91	7.01	7.04	236	257	266
Malaysia	3yr	3.17	3.27	3.24	3.21	-93	-82	-68
MYR	5yr	3.26	3.45	3.41	3.36	-83	-74	-65
	10yr	4.18	3.62	3.58	3.57	-93	-86	-80

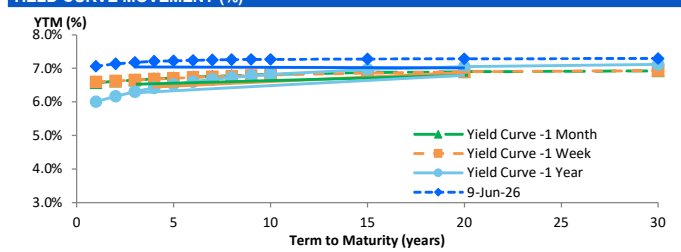
Sources: Bloomberg (Current Yield Curve), US Treasury

YIELD OF GOVERNMENT BOND BENCHMARK (%)



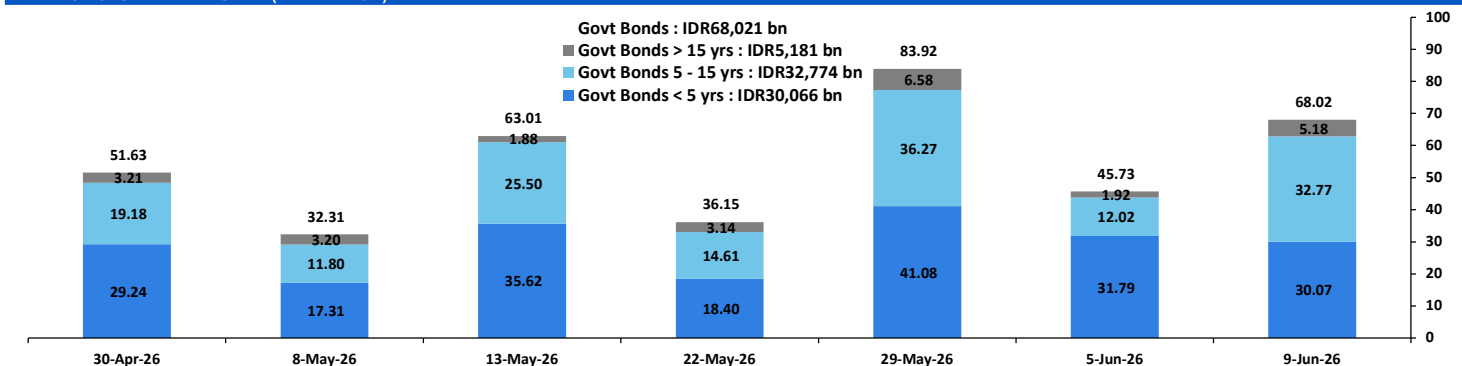
Source: Bloomberg

YIELD CURVE MOVEMENT (%)



Source: Bloomberg

TRADING VOLUME BY MATURITY (IDR TRILLION)



Sources: Indonesia Stock Exchange

CURRENCY

Price	9-Jun-26	-1 Day	-1 Week	-1 Month	EoP2025	
DX	99.83	↓	100.05	99.22	97.90	98.32
USD/IDR	18,060	↓	18,178	17,838	17,373	16,690
EUR/USD	1.16	↑	1.15	1.16	1.18	1.17
USD/JPY	160.17	↑	160.16	159.91	156.68	156.71
USD/CNY	6.769	↓	6.783	6.764	6.801	6.988
USD/MYR	4.064	↓	4.074	3.965	3.921	4.060
SGD/IDR	14,007	↓	14,098	13,951	13,706	12,969

Source: Bloomberg

COMMODITY

Price	9-Jun-26	-1 Day	-1 Week	-1 Month	EoP2025	
CPO (Palm Oil)	4,450	↓	4,492	4,470	4,478	3,998
Coal	152.00	↑	151.25	141.30	131.75	107.50
Gold (XAU/USD)	4,330	↑	4,330	4,489	4,715	4,319
Nickel	18,127	↓	18,494	19,072	18,714	16,546
Copper	641.75	↑	635.00	667.65	624.90	568.20
Brent	92.29	↓	94.25	96.00	101.29	60.85
WTI	89.08	↓	91.30	93.76	95.42	57.42

PHEI FAIR SPREAD

	1Y	2Y	3Y	4Y	5Y	6Y	7Y	8Y	9Y	10Y
AAA	27	41	48	52	55	57	59	60	62	62
AA+	36	47	54	58	60	62	63	64	65	66
AA	55	66	73	76	79	80	82	83	83	84
AA-	91	106	113	116	119	122	124	125	127	127
A+	141	161	168	173	177	181	184	187	189	191
A	194	221	230	236	242	248	254	259	262	264
A-	246	277	289	299	308	318	326	332	336	339
BBB+	296	331	346	360	374	387	397	405	410	414
BBB	344	382	402	421	439	455	468	478	484	488

*interpolated, as of June 09, 2026 (bps)

Sources: PHEI, Bloomberg

SBN HOLDING - (IDR tn)

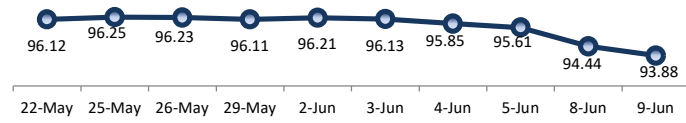
	08-Jun-2026	WoW	Mtd	YTD
Banks	1,202.4	(22.6)	(22.6)	(126.3)
Bank Indonesia (exclude repo)	1,876.2	28.4	28.4	234.6
Non-Banks:				
Mutual Fund	260.0	5.5	5.5	17.0
Insurance & Pension Fund	1,402.5	12.1	12.1	111.8
Foreign Investor	869.0	5.7	5.7	(9.7)
Individual	552.6	(0.2)	(0.2)	15.3
Others	719.7	6.4	6.4	70.8
Total	6,882.3	35.4	35.4	313.5
Domestic Investor	4,137.1	1.2	1.2	88.6
Foreign Investor	869.0	5.7	5.7	(9.7)
Bank Indonesia (include repo)	1,722.0	2.6	2.6	81.4

Source: DJPPR (Processed)

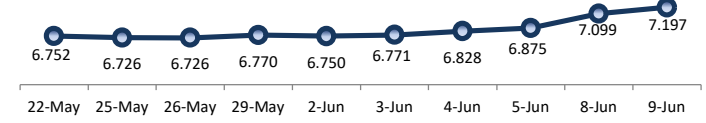
VALUATIONS OF GOVERNMENT BONDS

Bond	Issue Date	Mature Date	Coupon	TTM	Modified Duration	YTM (Change)	Prev Closing Price	Fair Yield Range		Fair Price Range		Last Trade			
												Date	Price	Vol (IDR bn)	Freq
FR0056	23-Sep-10	15-Sep-26	8.38	0.3	0.26	6.80 ↑ 7.8bps	100.37	6.361	6.858	100.36	100.49	9-Jun-26	100.21	73.08	26
FR0090	8-Jul-21	15-Apr-27	5.13	0.9	0.81	7.05 ↑ 4.6bps	98.44	6.888	7.218	98.29	98.56	9-Jun-26	99.70	247.66	38
FR0059	15-Sep-11	15-May-27	7.00	0.9	0.88	7.11 ↓ 0.2bps	99.90	6.903	7.320	99.71	100.08	9-Jun-26	99.93	446.48	59
FR0042	25-Jan-07	15-Jul-27	10.25	1.1	0.99	7.11 ↑ 7.5bps	103.23	6.855	7.279	103.07	103.52	8-Jun-26	102.97	0.00	1
FR0094	4-Mar-22	15-Jan-28	5.60	1.6	1.47	5.96 ↓ 1.2bps	99.45	6.055	7.031	97.86	99.31	9-Jun-26	97.35	0.20	2
FR0047	30-Aug-07	15-Feb-28	10.00	1.7	1.50	7.02 ↑ 10.7bps	104.62	6.947	7.259	104.25	104.76	9-Jun-26	102.90	0.00	2
FR0064	13-Aug-12	15-May-28	6.13	1.9	1.78	7.10 ↑ 6.5bps	98.26	6.960	7.237	98.02	98.51	9-Jun-26	98.10	383.12	47
FR0095	19-Aug-22	15-Aug-28	6.38	2.2	1.96	7.18 ↑ 13.6bps	98.39	6.921	7.213	98.32	98.90	9-Jun-26	98.10	300.82	39
FR0099	27-Jan-23	15-Jan-29	6.40	2.6	2.30	6.62 ↑ 0.8bps	99.48	6.707	7.435	97.59	99.27	1-Jul-25	99.50	49.05	2
FR0071	12-Sep-13	15-Mar-29	9.00	2.8	2.38	7.19 ↑ 10.7bps	104.45	6.964	7.257	104.28	105.02	9-Jun-26	104.95	22.84	7
FR0101	2-Nov-23	15-Apr-29	6.88	2.9	2.52	7.16 ↑ 8.3bps	99.26	6.972	7.222	99.11	99.74	9-Jun-26	100.00	2,948.78	94
FR0078	27-Sep-18	15-May-29	8.25	2.9	2.56	7.23 ↑ 11.5bps	102.64	7.002	7.268	102.54	103.25	9-Jun-26	103.25	79.41	16
FR0104	22-Aug-24	15-Jul-30	6.50	4.1	3.44	7.24 ↑ 3.1bps	97.41	7.061	7.375	96.94	98.03	9-Jun-26	97.70	505.52	45
FR0052	20-Aug-09	15-Aug-30	10.50	4.2	3.32	6.98 ↓ 4.1bps	112.54	6.858	7.256	111.51	113.04	8-Jun-26	113.22	3.00	4
FR0082	1-Aug-19	15-Sep-30	7.00	4.3	3.57	7.11 ↑ 13.9bps	99.59	6.989	7.299	98.90	100.02	9-Jun-26	98.30	769.00	120
FRSDG001	27-Oct-22	15-Oct-30	7.38	4.4	3.65	6.63 ↑ 22.6bps	102.76	6.529	6.976	101.46	103.15	9-Jun-26	98.70	130.00	2
FR0087	13-Aug-20	15-Feb-31	6.50	4.7	3.88	7.35 ↑ 8.4bps	96.68	7.027	7.415	96.42	97.91	9-Jun-26	96.36	150.28	49
FR1019	15-Aug-25	15-Mar-31	5.88	4.8	4.00	7.31	94.29	7.008	7.379	94.03	95.46	9-Jun-26	93.85	4,318.62	209
FR0085	4-May-20	15-Apr-31	7.75	4.9	3.98	6.66 ↓ 6.5bps	104.43	6.798	7.356	101.57	103.87	5-Jun-26	103.95	0.00	1
FR0073	6-Aug-15	15-May-31	8.75	4.9	3.98	7.08 ↑ 38.7bps	106.83	6.912	7.318	105.83	107.56	9-Jun-26	105.65	239.62	50
FR0054	22-Jul-10	15-Jul-31	9.50	5.1	3.94	7.00 ↑ 31.6bps	110.57	6.905	7.395	108.79	110.98	9-Jun-26	109.25	0.32	4
FR0091	8-Jul-21	15-Apr-32	6.38	5.9	4.73	7.35 ↑ 10.9bps	95.43	7.050	7.417	95.11	96.80	9-Jun-26	95.74	193.78	54
FR0058	21-Jul-11	15-Jun-32	8.25	6.0	4.54	7.44 ↑ 29.2bps	103.87	7.048	7.444	103.85	105.81	9-Jun-26	102.20	1.65	5
FR0074	10-Nov-16	15-Aug-32	7.50	6.2	4.78	7.35 ↑ 45.6bps	100.70	7.060	7.364	100.65	102.16	9-Jun-26	98.65	7.69	37
FR0096	19-Aug-22	15-Feb-33	7.00	6.7	5.13	7.34 ↑ 23.7bps	98.22	7.079	7.398	97.92	99.57	9-Jun-26	99.10	432.84	108
FR0065	30-Aug-12	15-May-33	6.63	6.9	5.45	6.87 ↑ 0.5bps	98.67	6.965	7.365	96.03	98.15	9-Jun-26	96.50	49.94	90
FR0100	24-Aug-23	15-Feb-34	6.63	7.7	5.79	7.09 ↑ 0.8bps	97.29	7.083	7.356	95.75	97.31	9-Jun-26	96.00	1,004.84	80
FR0068	1-Aug-13	15-Mar-34	8.38	7.8	5.61	7.36 ↑ 26.5bps	105.91	7.122	7.372	105.83	107.36	9-Jun-26	104.00	401.35	42
FR0080	4-Jul-19	15-Jun-35	7.50	9.0	6.25	7.43 ↑ 15.8bps	100.48	7.048	7.428	100.46	102.98	9-Jun-26	99.30	269.32	104
FR0103	29-Jul-25	15-Jul-35	6.75	9.1	6.47	7.37 ↑ 12.0bps	95.94	7.065	7.411	95.67	97.90	9-Jun-26	96.15	11,977.11	178
FR1018	31-Jul-25	15-Apr-36	6.50	9.9	7.01	7.37	94.01	6.953	7.350	94.10	96.79	9-Jun-26	95.00	5,680.69	323
FR0072	9-Jul-15	15-May-36	8.25	9.9	6.85	6.86 ↓ 7.7bps	109.87	7.004	7.406	105.85	108.80	9-Jun-26	108.00	48.63	36
FR0088	7-Jan-21	15-Jun-36	6.25	10.0	6.98	7.37 ↑ 29.2bps	92.20	6.981	7.311	92.55	94.79	9-Jun-26	90.10	36.80	63
FR0045	24-May-07	15-May-37	9.75	10.9	7.04	7.10 ↑ 0.2bps	119.87	7.163	7.379	117.57	119.37	8-Jun-26	119.97	0.01	1
FR0093	6-Jan-22	15-Jul-37	6.38	11.1	7.59	6.87 ↓ 0.1bps	96.20	6.973	7.289	93.12	95.43	9-Jun-26	95.15	8.04	23
FR0075	10-Aug-17	15-May-38	7.50	11.9	7.88	6.89 ↓ 9.5bps	104.88	7.049	7.409	100.71	103.59	9-Jun-26	99.75	19.54	61
FR0098	15-Sep-22	15-Jun-38	7.13	12.0	7.69	7.28 ↑ 3.7bps	98.80	7.121	7.386	97.94	100.03	9-Jun-26	100.00	158.16	87
FR0050	24-Jan-08	15-Jul-38	10.50	12.1	7.26	6.84 ↑ 1.0bps	129.74	6.981	7.390	124.58	128.42	9-Jun-26	129.90	0.00	2
FR0079	7-Jan-19	15-Apr-39	8.38	12.9	7.90	7.47 ↑ 39.3bps	107.40	7.154	7.384	108.12	110.14	9-Jun-26	107.53	77.70	40
FR0083	7-Nov-19	15-Apr-40	7.50	13.9	8.49	7.30 ↑ 2.6bps	101.70	7.130	7.398	100.86	103.21	9-Jun-26	103.00	45.80	130
FR1016	9-Jan-25	15-Aug-40	7.13	14.2	8.56	7.44	97.26	7.080	7.398	97.61	100.38	9-Jun-26	98.15	1,594.52	243
FR0057	21-Apr-11	15-May-41	9.50	14.9	8.63	6.85 ↑ 0.4bps	124.49	6.991	7.335	119.44	123.02	14-Apr-26	126.50	5.25	2
FR0062	9-Feb-12	15-Apr-42	6.38	15.9	9.42	7.45 ↑ 56.2bps	90.05	7.098	7.371	90.77	93.17	9-Jun-26	89.00	6.45	18
FR0092	8-Jul-21	15-Jun-42	7.13	16.0	9.22	6.93 ↓ 0.7bps	101.83	7.055	7.321	98.17	100.67	9-Jun-26	98.25	44.44	122
FR0097	19-Aug-22	15-Jun-43	7.13	17.0	9.40	7.23 ↑ 14.3bps	98.99	7.083	7.285	98.45	100.41	9-Jun-26	98.50	130.09	169
FR0067	18-Jul-13	15-Feb-44	8.75	17.7	9.43	6.91 → 0.0bps	118.61	7.052	7.403	113.14	116.99	9-Jun-26	117.00	1.70	2
FR1017	9-Jan-25	15-Aug-45	7.13	19.2	10.00	7.43	96.89	7.022	7.375	97.44	101.06	9-Jun-26	97.75	944.22	151
FR0076	22-Sep-17	15-May-48	7.38	21.9	10.74	7.38 ↑ 30.3bps	99.97	7.146	7.321	100.58	102.51	9-Jun-26	99.50	53.58	178
FR0089	7-Jan-21	15-Aug-51	6.88	25.2	11.43	7.16 ↑ 15.2bps	96.67	7.172	7.312	94.99	96.55	9-Jun-26	90.50	80.05	128
FR0102	5-Jan-24	15-Jul-54	6.88	28.1	11.64	7.32 ↑ 9.0bps	94.69	7.117	7.360	94.26	97.07	9-Jun-26	94.04	613.60	195
FR1025	27-Aug-24	15-Jul-64	6.88	38.1	13.05	6.90 ↓ 0.3bps	99.72	7.005	7.311	94.42	98.27	14-Apr-25	99.00	0.10	1
ORI024T6	8-Nov-23	15-Oct-29	6.35	3.4	-	7.14 ↑ 40.0bps	97.66	6.872	7.181	97.53	98.44	9-Jun-26	98.50	1.45	15
ORI025T6	28-Feb-24	15-Feb-30	6.40	3.7	-	6.70 → 0.0bps	99.01	6.765	7.182	97.48	98.81	9-Jun-26	98.00	3.72	13
ORI026T6	30-Oct-24	15-Oct-30	6.40	4.4	-	7.12 ↑ 29.0bps	97.34	6.749	7.149	97.21	98.69	9-Jun-26	95.50	0.98	9
PBS003	2-Feb-12	15-Jan-27	6.00	0.6	0.57	6.93 ↑ 15.6bps	99.46	6.546	7.029	99.40	99.68	9-Jun-26	97.10	133.39	83
PBS020	22-Oct-18	15-Oct-27	9.00	1.4	1.26	5.02 ↓ 0.8bps	105.10	5.219	6.309	103.42	104.85	31-Jul-24	108.25	0.50	1
PBS018	4-Jun-18	15-May-28	7.63	1.9	1.77	6.27 ↑ 16.1bps	102.41	5.921	6.995	101.11	103.06	3-Sep-19	99.29	2,000.00	2
PBS030	4-Jun-21	15-Jul-28	5.88	2.1	1.89	7.03	97.78	6.814	7.281	97.30	98.18	9-Jun-26	97.00	393.71	188
PBSG001	22-Sep-22	15-Sep-29	6.63	3.3	2.85	6.78 → 0.0bps	99.53	6.611	7.221	98.28	100.03	29-May-26	99.70	60.00	1
IFR0006	1-Apr-10	15-Mar-30	10.25	3.8	3.10	6.00 ↓ 0.2bps	114.10	6.039	7.076	110.31	113.98	11-Mar-26</			

PRICE INDEX



YIELD INDEX



TECHNICAL ANALYSIS

FR0109

INDICATORS	9-Jun-26	-1 Day	Change
Last Price	94.21	94.37	(0.16)
DI+	9.46	10.46	(1.00)
DI-	62.77	59.41	3.35
ADX (15D)	44.64	42.56	2.08
A/D	-24,435.42	-30,371.16	5,935.74
CMF(20D)	-0.322	-0.401	0.08
CCI	-205.01	-219.52	14.51
Volume (IDR bn)	4,318.62	5,648.76	(1,330.14)
Frequency	209	143	66

COMMENT

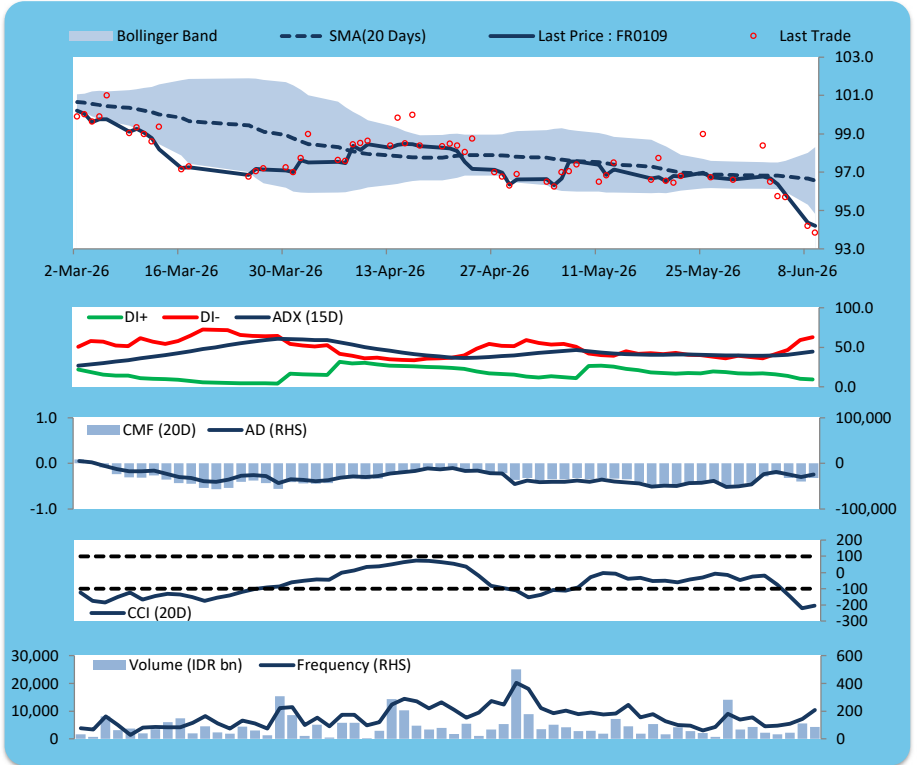
Price declined; heavy trade volume; downward trend continues to weaken; selling pressure eased; CCI increased.

SELL

FEATURES

Issue Date	14-Aug-25
Mature Date	15-Mar-31
Tenor	4.8
Coupon Rate	5.88
Last Yield	7.33
Modified Duration	4.00
Previous Coupon Date	15-Mar-26
Next Coupon Date	15-Sep-26

Sources: Bloomberg (Price); IDX



FR0108

INDICATORS	9-Jun-26	-1 Day	Change
Last Price	94.01	94.82	(0.81)
DI+	13.41	16.13	(2.72)
DI-	67.98	62.49	5.49
ADX (15D)	25.94	23.00	2.94
A/D	-7,020.89	-7,673.13	652.24
CMF(20D)	-0.173	-0.212	0.04
CCI	-221.04	-226.39	5.35
Volume (IDR bn)	5,680.69	1,752.71	3,927.98
Frequency	323	184	139

COMMENT

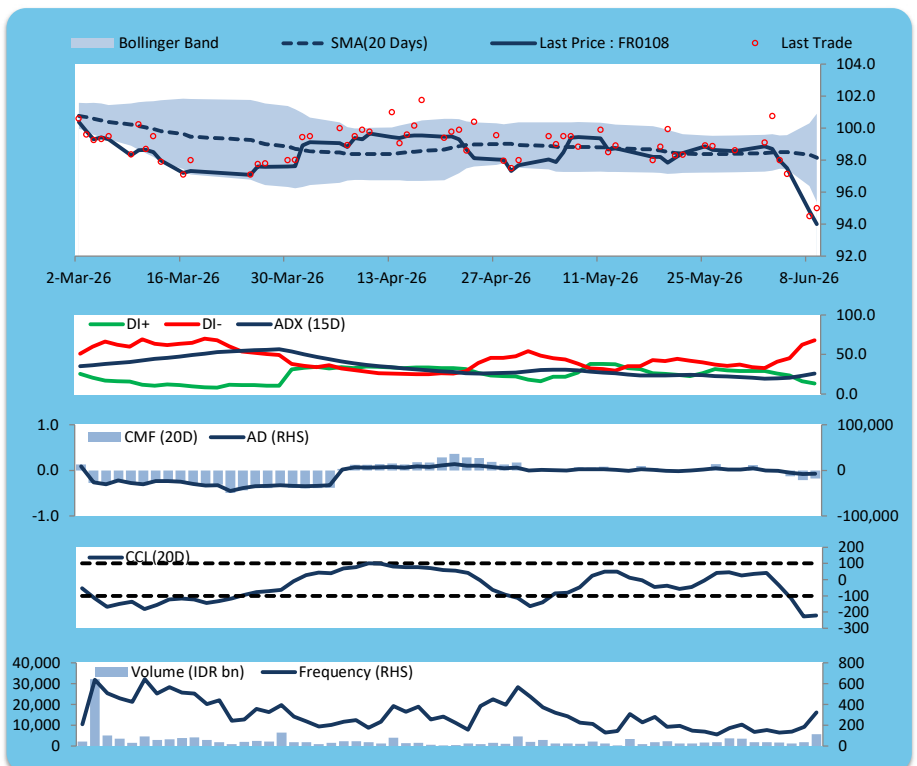
Price declined; heavy trade volume; downward trend continues to weaken; selling pressure eased; CCI increased.

SELL

FEATURES

Issue Date	31-Jul-25
Mature Date	15-Apr-36
Tenor	9.9
Coupon Rate	6.50
Last Yield	7.36
Modified Duration	7.01
Previous Coupon Date	15-Apr-26
Next Coupon Date	15-Oct-26

Sources: Bloomberg (Price); IDX



FR0106

INDICATORS	9-Jun-26	-1 Day	Change
Last Price	97.18	98.83	(1.66)
DI+	10.03	13.86	(3.84)
DI-	76.58	69.34	7.24
ADX (15D)	29.78	26.42	3.36
A/D	-6,494.86	-6,659.61	164.75
CMF(20D)	-0.257	-0.272	0.01
CCI	-222.80	-241.96	19.15
Volume (IDR bn)	1,594.52	1,260.72	333.81
Frequency	243	116	127

COMMENT

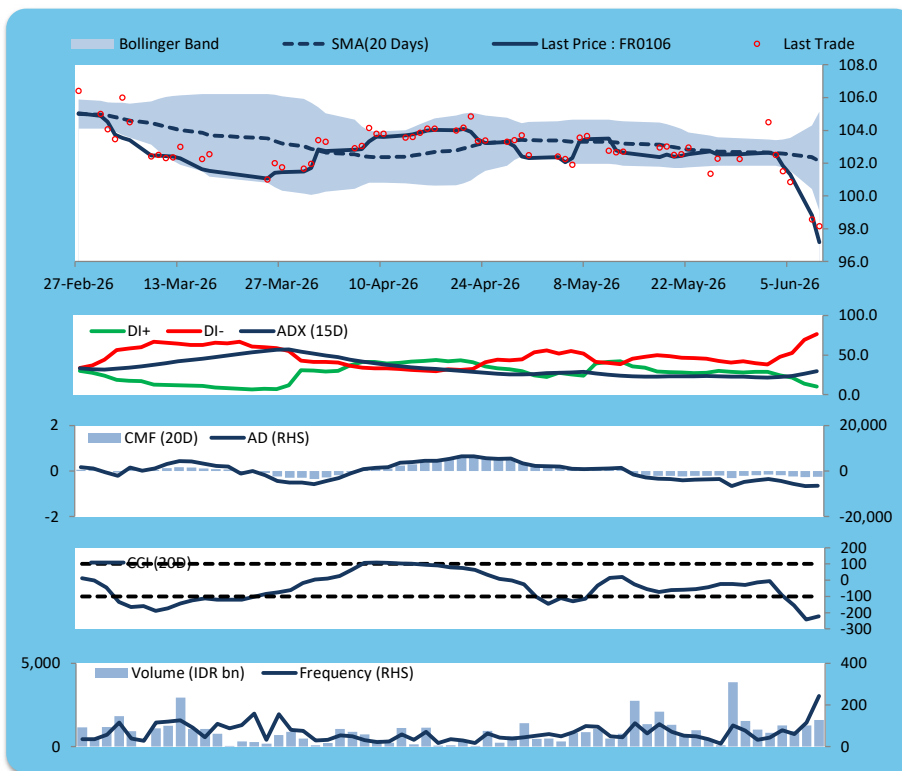
Price declined; heavy trade volume; downward trend continues to strengthen; selling pressure eased; CCI increased.

SELL

FEATURES

Issue Date	9-Jan-25
Mature Date	15-Aug-40
Tenor	14.2
Coupon Rate	7.13
Last Yield	7.45
Modified Duration	8.55
Previous Coupon Date	15-Feb-26
Next Coupon Date	15-Aug-26

Sources: Bloomberg (Price); IDX



FR0107

INDICATORS	9-Jun-26	-1 Day	Change
Last Price	96.89	99.21	(2.32)
DI+	8.83	12.01	(3.18)
DI-	77.09	68.84	8.25
ADX (15D)	35.20	32.04	3.16
A/D	-5,077.38	-4,202.62	(874.76)
CMF(20D)	-0.255	-0.217	(0.04)
CCI	-221.73	-213.38	(8.35)
Volume (IDR bn)	944.22	562.83	381.39
Frequency	151	128	23

COMMENT

Price declined; heavy trade volume; downward trend continues to strengthen; selling pressure increased; CCI declined.

SELL

FEATURES

Issue Date	9-Jan-25
Mature Date	15-Aug-45
Tenor (year)	19.2
Coupon Rate	7.13
Last Yield	7.43
Modified Duration	10.00
Previous Coupon Date	15-Feb-26
Next Coupon Date	15-Aug-26

Sources: Bloomberg (Price); IDX



ECONOMIC AND FIXED INCOME RESEARCH TEAM**Chief Economist and Head Fixed Income Research**

Helmy Kristanto	helmy.kristanto@brids.co.id	(62-21) 5091 4100 ext. 3400
-----------------	-----------------------------	-----------------------------

Economists

Relindya Yuriswari Salehaningtyas	relindya.salehaningtyas@brids.co.id	(62-21) 5091 4100 ext. 3609
Ebenezer Mesotuhu Harefa	ebenezer.harefa@brids.co.id	(62-21) 5091 4100 ext. 3609

Credit Analyst

Laras Nerpatari Suliyas	laras.nerpatari@brids.co.id	(62-21) 5091 4100 ext. 3403
-------------------------	-----------------------------	-----------------------------

Production & Database Management

Eka Nuraini	ekan@brids.co.id	(62-21) 5091 4100 ext. 3407
Faiqul Kurnia Muslim	faiqul.muslim@brids.co.id	(62-21) 5091 4100 ext. 3402

INSTITUTIONAL DEBT SALES & TRADING TEAM**Head of Debt Capital Market**

Yopi Chandra Wardhani	yopi.wardhani@brids.co.id	(62-21) 5091 4100 ext. 3220
-----------------------	---------------------------	-----------------------------

Debt Sales

Rachmat Eko Putranto	rachmat.putranto@brids.co.id	(62-21) 5091 4100 ext. 3218
Rafi Hutama Soeriaatmadja	rafi.soeriaatmadja@brids.co.id	(62-21) 5091 4100 ext. 3926
Adzkia Zahra	adzkia.zahra@brids.co.id	(62-21) 5091 4100 ext. 3924

Debt Brokerage

Citra Isramij P.	citra.isramij@brids.co.id	(62-21) 5091 4100 ext. 3228
Sisca Emilia	sisca.emilia@brids.co.id	(62-21) 5091 4100 ext. 3921
Deviano Sujitno	deviano.sujitno@brids.co.id	(62-21) 5091 4100 ext. 3925

DISCLAIMER: The information contained in this report has been taken from sources which we deem reliable. However, none of P.T. BRI Danareksa Sekuritas and/or its affiliated companies and/or their respective employees and/or agents makes any representation or warranty (express or implied) or accepts any responsibility or liability as to, or in relation to, the accuracy or completeness of the information and opinions contained in this report or as to any information contained in this report or any other such information or opinions remaining unchanged after the issue thereof. We expressly disclaim any responsibility or liability (express or implied) of P.T. BRI Danareksa Sekuritas, its affiliated companies and their respective employees and agents whatsoever and howsoever arising (including, without limitation for any claims, proceedings, action, suits, losses, expenses, damages or costs) which may be brought against or suffered by any person as a result of acting in reliance upon the whole or any part of the contents of this report and neither P.T. BRI Danareksa Sekuritas, its affiliated companies or their respective employees or agents accepts liability for any errors, omissions or mis-statements, negligent or otherwise, in the report and any liability in respect of the report or any inaccuracy therein or omission therefrom which might otherwise arise is hereby expressly disclaimed. The information contained in this report is not to be taken as any recommendation made by P.T. BRI Danareksa Sekuritas or any other person to enter into any agreement with regard to any investment mentioned in this document. This report is prepared for general circulation. It does not have regard to the specific person who may receive this report. In considering any investments you should make your own independent assessment and seek your own professional financial and legal advice.