

MOST ACTIVE GOVERNMENT BONDS

Bond	Coupon	Maturity	Last Price	Yield	Volume (IDR bn)
FR0109	5.875	15-Mar-31	94.20	7.287	5,648.76
FR0108	6.500	15-Apr-36	94.50	7.221	1,752.71
FR0104	6.500	15-Jul-30	99.15	7.209	1,291.55
FR0106	7.125	15-Aug-40	98.57	7.222	1,260.72
FR0059	7.000	15-May-27	99.91	7.110	917.03
PBS032	4.875	15-Jul-26	99.80	6.608	845.54
FR0102	6.875	15-Jul-54	96.59	7.233	759.70
SPN12260702	-	2-Jul-26	99.62	-	660.00
FR0107	7.125	15-Aug-45	99.00	7.200	562.83
PBS030	5.880	15-Jul-28	97.35	6.719	376.63

*Current yield; Coupon, Last Price & Yield are in %; Volume is in IDR bn; Rating code: id(Pefindo) & idn (Fitch Indonesia)
Sources: Bloomberg; Indonesia Stock Exchange (Volume)

MOST ACTIVE CORPORATE BONDS

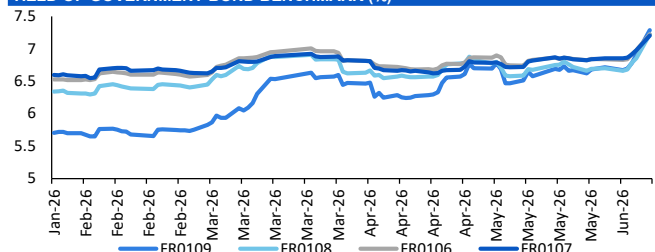
Bond	Rating	Coupon	Maturity	Last Price	Yield	Volume
BUMI01ACN5	A+	7.500	6-Jun-27	99.90	7.51	659.33
ADMFO6BCN4	AAA	6.700	10-Oct-27	101.09	5.85	600.00
SIBAL01BCN3	A	7.250	5-Dec-28	96.50	8.83	500.00
OPPM02ACN4	A+	7.250	6-Feb-31	98.95	7.52	400.00
SMLPPI01CN1	A	11.000	4-Oct-29	105.25	9.15	323.59
SWCARE01B	A-	10.750	9-Jul-28	101.47	9.96	300.00
FIFA06BCN4	AAA	6.900	6-Sep-27	101.12	5.96	220.00
LPP103BCN1	A	11.000	4-Oct-29	101.56	10.44	212.21
BTPN05ACN3	AAA	6.100	2-Sep-28	100.78	5.73	210.00
SIBOLD01B	A+	8.500	26-Mar-28	97.33	10.14	205.00

SOVEREIGN BOND YIELDS

Country	Tenor	Coupon (%)	8-Jun-26	MA LTM as		Spread over UST YC (bps)		
				of May	Apr	8-Jun-26	May	Apr
United States	2yr		4.23	4.05	3.89			
USD	5yr		4.31	4.14	4.01			
	10yr		4.57	4.44	4.37			
German	2yr	0.25	2.71	2.53	2.64	-146	-148	-123
EUR	5yr	1.00	2.79	2.64	2.75	-152	-151	-126
	10yr	1.75	3.06	2.94	3.04	-151	-150	-134
Indonesia	2yr	3.50	-	4.18	4.20	-	18	32
USD	5yr	3.85	-	4.73	4.57	-	59	56
	10yr	6.63	-	5.50	5.35	-	106	98
Brazil	2yr	0.00	14.72	13.82	13.71	1,055	982	984
BRL	3yr	0.00	14.90	13.94	13.81	1,072	994	994
	10yr	10.00	14.86	14.12	13.98	1,068	1,012	1,010
Philippines	2yr	6.00	6.91	6.85	5.83	274	285	195
PHP	5yr	7.88	7.49	7.45	6.84	318	331	283
	10yr	11.38	7.51	7.42	6.92	294	298	254
Thailand	2yr	3.13	1.25	1.24	1.24	-292	-276	-264
THB	5yr	3.45	1.72	1.68	1.61	-259	-246	-240
	10yr	3.63	2.29	2.33	2.20	-228	-211	-218
India	2yr	7.59	6.23	6.42	6.26	206	241	239
INR	5yr	7.28	6.61	6.82	6.77	230	268	277
	10yr	8.83	6.97	7.01	7.04	240	257	266
Malaysia	3yr	3.17	3.28	3.24	3.21	-96	-82	-68
MYR	5yr	3.26	3.45	3.41	3.36	-86	-74	-65
	10yr	4.18	3.61	3.58	3.57	-95	-86	-80

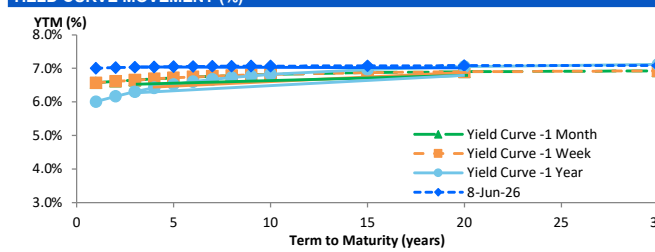
Sources: Bloomberg (Current Yield Curve), US Treasury

YIELD OF GOVERNMENT BOND BENCHMARK (%)



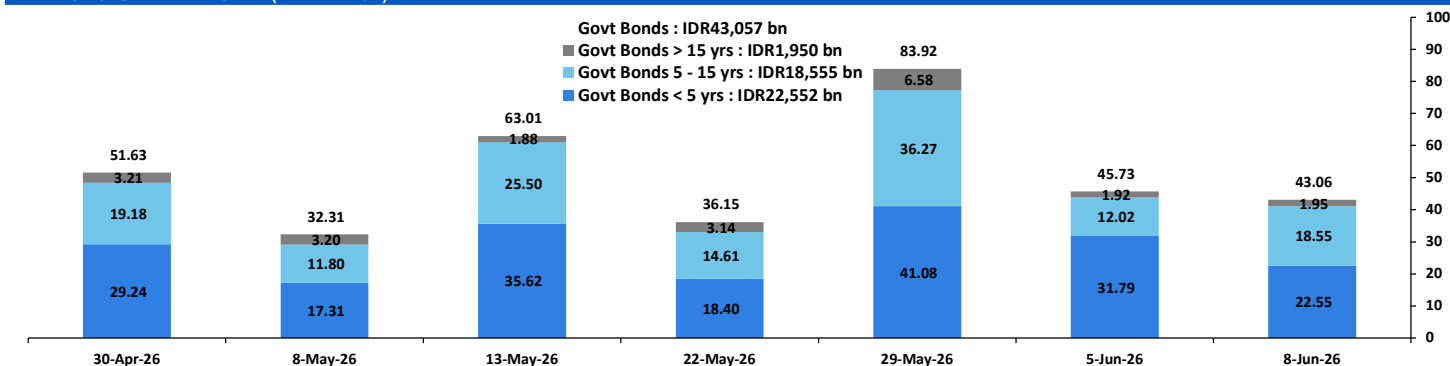
Source: Bloomberg

YIELD CURVE MOVEMENT (%)



Source: Bloomberg

TRADING VOLUME BY MATURITY (IDR TRILLION)



Sources: Indonesia Stock Exchange

CURRENCY

Price	8-Jun-26	-1 Day	-1 Week	-1 Month	EoP2025	
DX	100.18	↑	100.07	99.20	97.90	98.32
USD/IDR	18,178	↑	18,020	17,874	17,373	16,690
EUR/USD	1.15	↓	1.15	1.16	1.18	1.17
USD/JPY	160.01	↓	160.29	159.66	156.68	156.71
USD/CNY	6.786	↓	6.788	6.767	6.801	6.988
USD/MYR	4.073	↑	4.030	3.965	3.921	4.060
SGD/IDR	14,098	↑	14,048	13,964	13,706	12,969

Source: Bloomberg

COMMODITY

Price	8-Jun-26	-1 Day	-1 Week	-1 Month	EoP2025	
CPO (Palm Oil)	4,500	↓	4,531	4,470	4,478	3,998
Coal	151.00	↑	148.75	140.30	131.75	107.50
Gold (XAU/USD)	4,288	↓	4,328	4,485	4,715	4,319
Nickel	18,381	↓	19,084	19,084	18,714	16,546
Copper	631.60	↑	628.45	655.25	624.90	568.20
Brent	97.21	↑	93.09	94.98	101.29	60.85
WTI	94.67	↑	90.54	92.16	95.42	57.42

PHEI FAIR SPREAD

	1Y	2Y	3Y	4Y	5Y	6Y	7Y	8Y	9Y	10Y
AAA	30	41	47	50	53	55	58	59	61	62
AA+	38	46	52	55	57	59	61	62	64	64
AA	56	65	70	73	76	77	79	80	82	82
AA-	91	105	111	114	117	120	122	124	126	127
A+	140	159	167	172	177	181	185	188	190	191
A	194	219	229	236	244	251	256	260	263	266
A-	246	275	288	300	311	320	328	334	338	340
BBB+	295	327	344	360	376	389	399	407	411	414
BBB	343	377	399	420	441	458	470	479	485	488

*interpolated, as of June 08, 2026 (bps)

Sources: PHEI, Bloomberg

SBN HOLDING - (IDR tn)

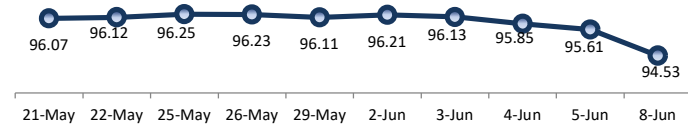
	04-Jun-2026	WoW	MoM	YTD
Banks	1,216.0	(1.7)	(8.9)	(112.6)
Bank Indonesia (exclude repo)	1,863.6	10.2	15.8	222.0
Non-Banks:				
Mutual Fund	259.7	3.8	5.3	16.8
Insurance & Pension Fund	1,400.8	10.8	10.4	110.2
Foreign Investor	872.1	7.7	8.9	(6.6)
Individual	552.9	0.1	0.0	15.5
Others	717.2	4.4	3.9	68.3
Total	6,882.3	35.4	35.4	313.5
Domestic Investor	4,146.6	17.4	10.7	98.1
Foreign Investor	872.1	7.7	8.9	(6.6)
Bank Indonesia (include repo)	1,722.6	3.1	3.2	82.0

Source: DJPPR (Processed)

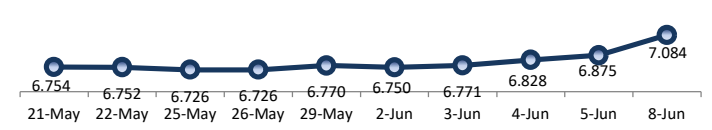
VALUATIONS OF GOVERNMENT BONDS

Bond	Issue Date	Mature Date	Coupon	TTM	Modified Duration	YTM	(Change)	Prev Closing Price	Fair Yield		Fair Price		Last Trade			
									Range	Range	Date	Price	Vol (IDR bn)	Freq		
FR0056	23-Sep-10	15-Sep-26	8.38	0.3	0.26	6.72	↑ 31.6bps	100.39	6.259	7.269	100.25	100.53	8-Jun-26	100.25	64.44	34
FR0090	8-Jul-21	15-Apr-27	5.13	0.9	0.81	7.00	↑ 9.2bps	98.47	6.848	7.316	98.21	98.59	8-Jun-26	98.60	360.26	96
FR0059	15-Sep-11	15-May-27	7.00	0.9	0.89	7.11	↑ 6.7bps	99.90	6.883	7.368	99.67	100.10	8-Jun-26	99.91	917.03	115
FR0042	25-Jan-07	15-Jul-27	10.25	1.1	1.00	7.04	↑ 21.0bps	103.32	6.876	7.228	103.13	103.51	8-Jun-26	102.97	0.00	1
FR0094	4-Mar-22	15-Jan-28	5.60	1.6	1.48	5.98	↓ -4.3bps	99.43	6.156	6.893	98.06	99.16	5-Jun-26	98.00	1.89	1
FR0047	30-Aug-07	15-Feb-28	10.00	1.7	1.50	6.91	↑ 8.4bps	104.80	6.925	7.149	104.44	104.80	8-Jun-26	104.50	16.15	10
FR0064	13-Aug-12	15-May-28	6.13	1.9	1.78	7.04	↑ 21.8bps	98.37	6.918	7.106	98.25	98.58	8-Jun-26	98.85	91.77	51
FR0095	19-Aug-22	15-Aug-28	6.38	2.2	1.97	7.05	↑ 20.6bps	98.65	6.828	7.095	98.55	99.08	8-Jun-26	98.10	87.73	59
FR0099	27-Jan-23	15-Jan-29	6.40	2.6	2.30	6.61	↓ -1.0bps	99.50	6.733	7.253	98.05	99.21	1-Jul-25	99.50	49.05	2
FR0071	12-Sep-13	15-Mar-29	9.00	2.8	2.39	7.08	↑ 30.5bps	104.72	6.915	7.057	104.79	105.16	8-Jun-26	104.20	93.13	14
FR0101	2-Nov-23	15-Apr-29	6.88	2.9	2.52	7.08	↑ 24.6bps	99.46	6.876	7.068	99.50	99.98	8-Jun-26	99.00	81.87	56
FR0078	27-Sep-18	15-May-29	8.25	2.9	2.57	7.11	↑ 27.1bps	102.95	6.920	7.090	103.02	103.47	8-Jun-26	104.50	51.22	9
FR0104	22-Aug-24	15-Jul-30	6.50	4.1	3.44	7.21	↑ 29.7bps	97.51	6.975	7.163	97.67	98.32	8-Jun-26	99.15	1,291.55	91
FR0052	20-Aug-09	15-Aug-30	10.50	4.2	3.33	7.03	↑ 46.0bps	112.39	6.795	7.029	112.38	113.29	8-Jun-26	113.22	3.00	4
FR0082	1-Aug-19	15-Sep-30	7.00	4.3	3.58	6.97	↑ 23.2bps	100.09	6.934	7.057	99.78	100.23	8-Jun-26	99.00	333.61	114
FRSDG001	27-Oct-22	15-Oct-30	7.38	4.4	3.66	6.40	↑ 8.6bps	103.62	6.464	6.755	102.29	103.40	4-Jun-26	102.42	15.19	1
FR0087	13-Aug-20	15-Feb-31	6.50	4.7	3.88	7.26	↑ 38.5bps	97.00	6.940	7.179	97.33	98.25	8-Jun-26	97.50	175.68	84
FR0109	15-Aug-25	15-Mar-31	5.88	4.8	4.01	7.29	↑ 38.3bps	94.39	6.891	7.178	94.80	95.92	8-Jun-26	94.20	5,648.76	143
FR0085	4-May-20	15-Apr-31	7.75	4.9	3.98	6.73	↑ 4.4bps	104.15	6.792	7.088	102.66	103.89	5-Jun-26	103.95	0.00	1
FR0073	6-Aug-15	15-May-31	8.75	4.9	4.00	6.69	↓ -4.6bps	108.51	6.802	7.108	106.73	108.04	8-Jun-26	106.27	3.93	21
FR0054	22-Jul-10	15-Jul-31	9.50	5.1	3.95	6.68	↓ -9.9bps	112.00	6.822	7.177	109.76	111.37	8-Jun-26	109.40	0.19	7
FR0091	8-Jul-21	15-Apr-32	6.38	5.9	4.74	7.24	↑ 36.8bps	95.93	6.939	7.181	96.19	97.31	8-Jun-26	96.50	114.74	116
FR0058	21-Jul-11	15-Jun-32	8.25	6.0	4.56	7.15	↑ 30.9bps	105.31	6.965	7.165	105.23	106.23	8-Jun-26	107.05	0.33	4
FR0074	10-Nov-16	15-Aug-32	7.50	6.2	4.81	6.90	↑ 4.7bps	102.98	6.958	7.114	101.89	102.67	8-Jun-26	101.25	32.56	21
FR0096	19-Aug-22	15-Feb-33	7.00	6.7	5.15	7.10	↑ 25.2bps	99.45	6.974	7.129	99.31	100.12	8-Jun-26	99.00	227.44	86
FR0065	30-Aug-12	15-May-33	6.63	6.9	5.45	6.86	↑ 4.9bps	98.69	6.835	7.159	97.11	98.85	8-Jun-26	95.35	148.46	66
FR0100	24-Aug-23	15-Feb-34	6.63	7.7	5.79	7.08	↑ 21.2bps	97.34	6.976	7.118	97.11	97.92	8-Jun-26	100.00	237.26	77
FR0068	1-Aug-13	15-Mar-34	8.38	7.8	5.64	7.09	↑ 18.0bps	107.53	6.989	7.137	107.27	108.18	8-Jun-26	106.11	303.00	61
FR0080	4-Jul-19	15-Jun-35	7.50	9.0	6.27	7.27	↑ 39.2bps	101.51	6.912	7.176	102.12	103.89	8-Jun-26	101.75	138.87	82
FR0103	29-Jul-25	15-Jul-35	6.75	9.1	6.48	7.25	↑ 35.6bps	96.70	6.912	7.181	97.15	98.91	8-Jun-26	96.60	315.42	77
FR0108	31-Jul-25	15-Apr-36	6.50	9.9	7.03	7.22	↑ 38.0bps	94.97	6.798	7.115	95.69	97.88	8-Jun-26	94.50	1,752.71	184
FR0072	9-Jul-15	15-May-36	8.25	9.9	6.84	6.94	↑ 5.3bps	109.29	6.951	7.126	107.90	109.20	8-Jun-26	107.20	94.39	38
FR0088	7-Jan-21	15-Jun-36	6.25	10.0	7.03	7.07	↑ 30.4bps	94.16	6.852	7.051	94.31	95.68	8-Jun-26	91.65	35.80	66
FR0045	24-May-07	15-May-37	9.75	10.9	7.04	7.10	↑ 15.8bps	119.89	7.041	7.139	119.58	120.41	8-Jun-26	119.97	0.01	1
FR0093	6-Jan-22	15-Jul-37	6.38	11.1	7.59	6.87	↑ 1.7bps	96.19	6.864	7.048	94.87	96.24	8-Jun-26	93.00	31.26	44
FR0075	10-Aug-17	15-May-38	7.50	11.9	7.86	6.99	↑ 8.6bps	104.10	7.004	7.110	103.09	103.96	8-Jun-26	104.10	123.00	75
FR0098	15-Sep-22	15-Jun-38	7.13	12.0	7.70	7.24	↑ 27.8bps	99.09	6.941	7.180	99.56	101.48	8-Jun-26	98.50	94.91	64
FR0050	24-Jan-08	15-Jul-38	10.50	12.1	7.26	6.83	→ 0.0bps	129.85	6.923	7.115	127.15	128.98	3-Jun-26	130.40	0.40	4
FR0079	7-Jan-19	15-Apr-39	8.38	12.9	7.99	7.08	↑ 4.2bps	110.84	6.974	7.160	110.08	111.75	8-Jun-26	110.62	21.36	43
FR0083	7-Nov-19	15-Apr-40	7.50	13.9	8.49	7.28	↑ 32.8bps	101.93	6.958	7.176	102.80	104.76	8-Jun-26	100.05	23.08	74
FR0106	9-Jan-25	15-Aug-40	7.13	14.2	8.62	7.22	↑ 25.0bps	99.13	6.910	7.159	99.69	101.91	8-Jun-26	98.57	1,260.72	116
FR0057	21-Apr-11	15-May-41	9.50	14.9	8.63	6.85	↑ 0.2bps	124.54	6.915	7.053	122.37	123.83	14-Apr-26	126.50	5.25	2
FR0062	9-Feb-12	15-Apr-42	6.38	15.9	9.62	6.89	→ 0.0bps	95.05	6.957	7.097	93.18	94.45	8-Jun-26	94.80	39.62	37
FR0092	8-Jul-21	15-Jun-42	7.13	16.0	9.22	6.94	↑ 0.8bps	101.76	6.930	7.070	100.52	101.86	8-Jun-26	96.60	52.68	123
FR0097	19-Aug-22	15-Jun-43	7.13	17.0	9.46	7.09	↑ 16.0bps	100.38	6.878	7.084	100.40	102.46	8-Jun-26	99.50	198.81	133
FR0067	18-Jul-13	15-Feb-44	8.75	17.7	9.44	6.91	↓ -1.8bps	118.61	6.971	7.124	116.19	117.91	8-Jun-26	116.10	0.00	2
FR0107	9-Jan-25	15-Aug-45	7.13	19.2	10.11	7.20	↑ 22.8bps	99.21	6.838	7.132	99.91	103.03	8-Jun-26	99.00	562.83	128
FR0076	22-Sep-17	15-May-48	7.38	21.9	10.92	7.07	↑ 12.3bps	103.32	6.973	7.078	103.28	104.47	8-Jun-26	98.45	27.00	138
FR0089	7-Jan-21	15-Aug-51	6.88	25.2	11.55	7.01	↑ 2.4bps	98.42	6.982	7.102	97.34	98.73	8-Jun-26	92.90	101.83	156
FR0102	5-Jan-24	15-Jul-54	6.88	28.1	11.72	7.23	↑ 25.2bps	95.71	6.918	7.142	96.77	99.46	8-Jun-26	96.59	759.70	207
FR0105	27-Aug-24	15-Jul-64	6.88	38.1	13.05	6.90	↓ -1.0bps	99.68	6.867	7.065	97.49	100.09	14-Apr-25	99.00	0.10	1
ORI024T6	8-Nov-23	15-Oct-29	6.35	3.4	-	6.74	↑ 7.4bps	98.84	6.716	7.045	97.93	98.90	8-Jun-26	99.20	3.11	14
ORI025T6	28-Feb-24	15-Feb-30	6.40	3.7	-	6.70	↑ 2.3bps	99.01	6.649	7.033	97.95	99.19	8-Jun-26	99.50	5.01	33
ORI026T6	30-Oct-24	15-Oct-30	6.40	4.4	-	6.83	↑ 1.1bps	98.41	6.566	7.001	97.75	99.37	8-Jun-26	97.40	5.82	21
PBS003	2-Feb-12	15-Jan-27	6.00	0.6	0.57	6.77	↑ 4.6bps	99.55	6.511	7.521	99.11	99.70	8-Jun-26	99.80	69.39	179
PBS020	22-Oct-18	15-Oct-27	9.00	1.4	1.26	5.03	↓ -1.1bps	105.10	5.445	6.455	103.23	104.56	31-Jul-24	108.25	0.50	1
PBS018	4-Jun-18	15-May-28	7.63	1.9	1.77	6.11	↑ 14.9bps	102.71	6.037	6.047	101.02	102.85	3-Sep-19	99.29	2,000.00	2
PBS030	4-Jun-21	15-Jul-28	5.88	2.1	1.90	6.72	↓ -3.3bps	98.37	6.823	7.202	97.44	98.17	8-Jun-26	97.35	376.63	344
PBSG001	22-Sep-22	15-Sep-29	6.63	3.3	2.85	6.78	↑ 13.4bps	99.53	6.549	7.134	98.52	100.21	29-May-26	99.70	60.00	1
IFR0006	1-Apr-10	15-Mar-30	10.25	3.8	3.10	6.00	↓ -0.3bps	114.10	6.102	6.905	110.92	113.76	11-Mar-26	113.43	2.00	2
PBS023	15-May-19	15-May-30	8.13	3.9	3.35	5.87	↓ -0.3bps	107.								

PRICE INDEX



YIELD INDEX



TECHNICAL ANALYSIS

FR0109

INDICATORS	8-Jun-26	-1 Day	Change
Last Price	94.39	95.86	(1.47)
DI+	10.53	14.05	(3.53)
DI-	59.14	46.68	12.46
ADX (15D)	42.54	40.59	1.95
A/D	-30,495.47	-24,349.40	(6,146.07)
CMF(20D)	-0.402	-0.324	(0.08)
CCI	-218.56	-145.74	(72.82)
Volume (IDR bn)	5,648.76	2,236.19	3,412.57
Frequency	143	110	33

COMMENT

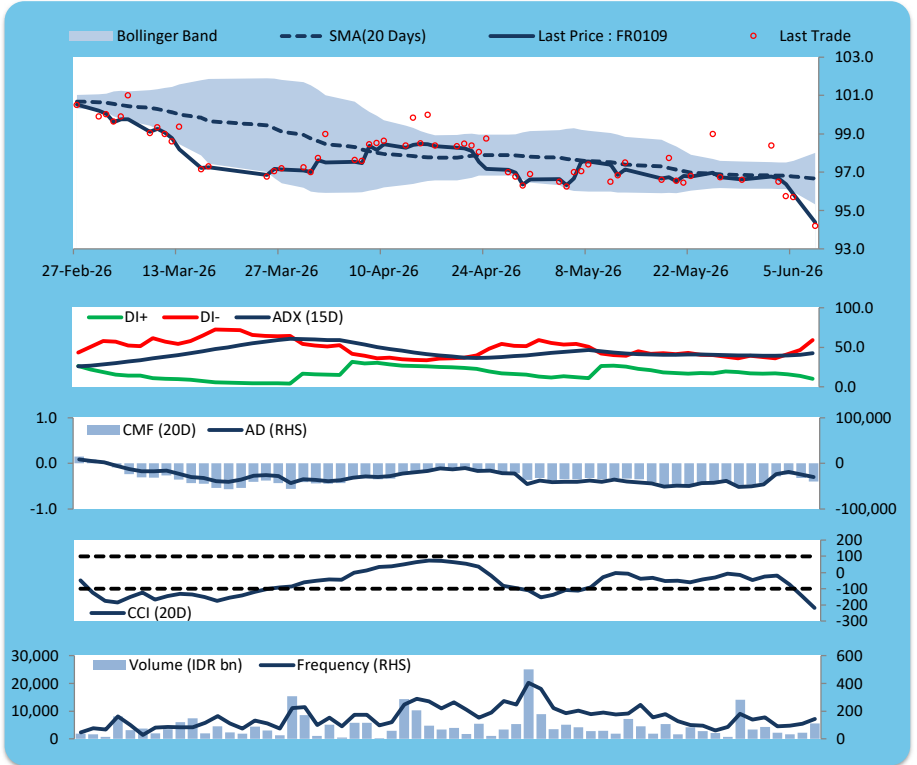
Price declined; heavy trade volume; downward trend continues to weaken; selling pressure increased; CCI declined.

SELL

FEATURES

Issue Date	14-Aug-25
Mature Date	15-Mar-31
Tenor	4.8
Coupon Rate	5.88
Last Yield	7.29
Modified Duration	4.01
Previous Coupon Date	15-Mar-26
Next Coupon Date	15-Sep-26

Sources: Bloomberg (Price); IDX



FR0108

INDICATORS	8-Jun-26	-1 Day	Change
Last Price	94.97	97.51	(2.54)
DI+	16.42	23.69	(7.27)
DI-	61.83	45.30	16.53
ADX (15D)	22.94	20.44	2.51
A/D	-7,664.90	-4,630.76	(3,034.15)
CMF(20D)	-0.211	-0.129	(0.08)
CCI	-223.37	-114.89	(108.48)
Volume (IDR bn)	1,752.71	1,333.53	419.18
Frequency	184	141	43

COMMENT

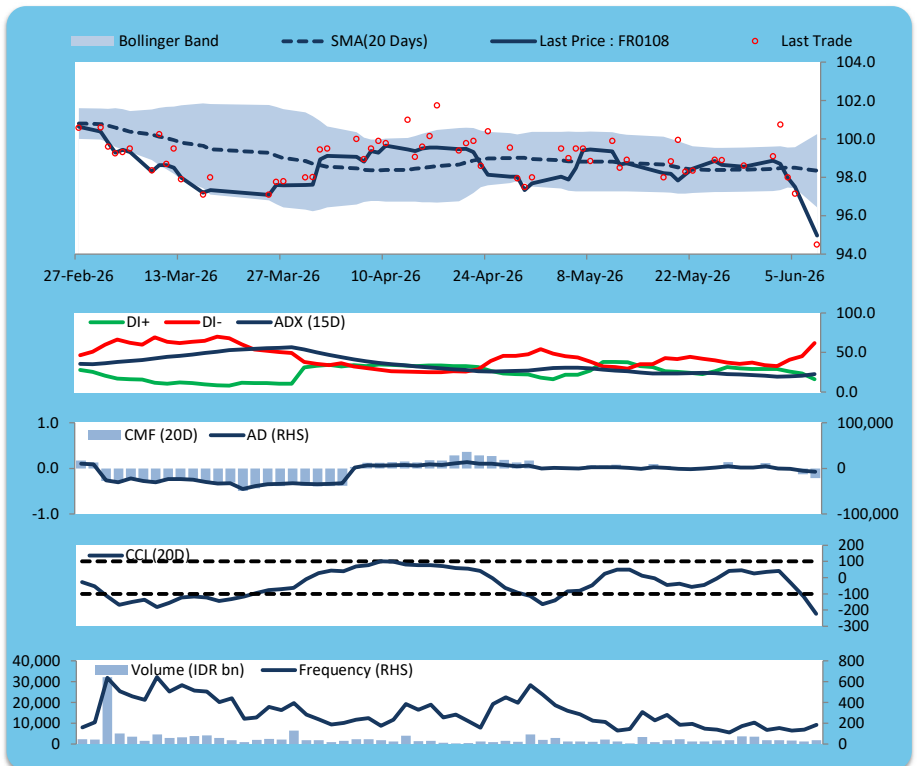
Price declined; heavy trade volume; downward trend continues to weaken; selling pressure increased; CCI declined.

SELL

FEATURES

Issue Date	31-Jul-25
Mature Date	15-Apr-36
Tenor	9.9
Coupon Rate	6.50
Last Yield	7.22
Modified Duration	7.03
Previous Coupon Date	15-Apr-26
Next Coupon Date	15-Oct-26

Sources: Bloomberg (Price); IDX



FR0106

INDICATORS	8-Jun-26	-1 Day	Change
Last Price	99.13	101.33	(2.20)
DI+	14.48	21.50	(7.02)
DI-	67.97	52.79	15.18
ADX (15D)	26.30	23.55	2.76
A/D	-6,664.74	-5,690.52	(974.21)
CMF(20D)	-0.272	-0.242	(0.03)
CCI	-237.71	-156.76	(80.95)
Volume (IDR bn)	1,260.72	936.66	324.06
Frequency	116	61	55

COMMENT

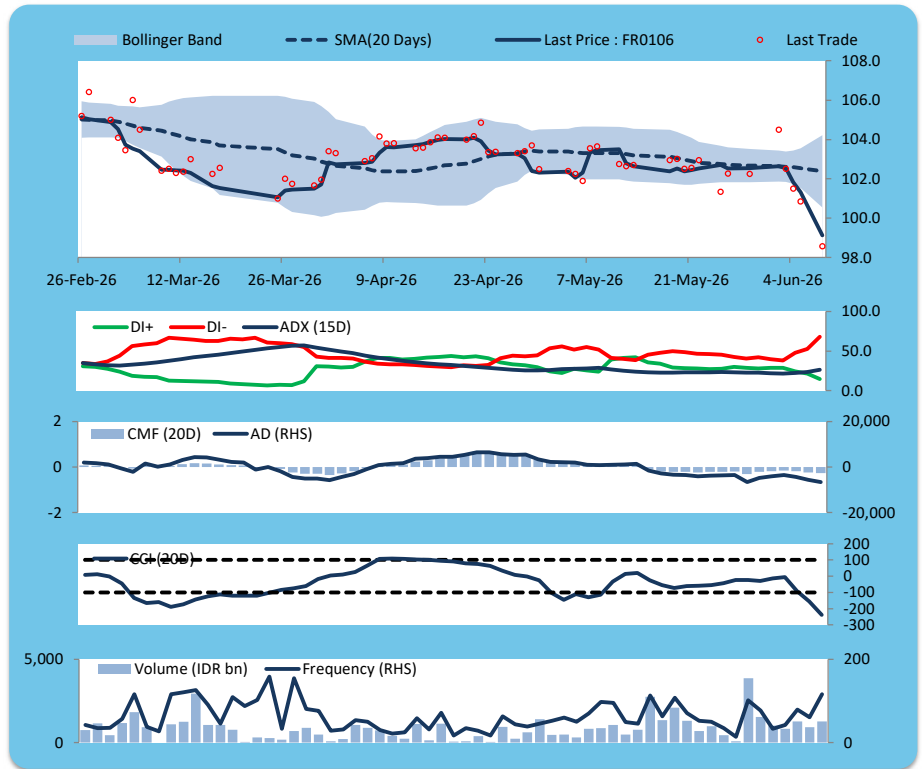
Price declined; heavy trade volume; downward trend continues to strengthen; selling pressure increased; CCI declined.

SELL

FEATURES

Issue Date	9-Jan-25
Mature Date	15-Aug-40
Tenor	14.2
Coupon Rate	7.13
Last Yield	7.22
Modified Duration	8.62
Previous Coupon Date	15-Feb-26
Next Coupon Date	15-Aug-26

Sources: Bloomberg (Price); IDX



FR0107

INDICATORS	8-Jun-26	-1 Day	Change
Last Price	99.21	101.55	(2.35)
DI+	12.01	17.95	(5.95)
DI-	68.84	53.71	15.14
ADX (15D)	32.04	29.31	2.73
A/D	-4,202.62	-3,959.55	(243.08)
CMF(20D)	-0.217	-0.202	(0.02)
CCI	-213.38	-146.04	(67.34)
Volume (IDR bn)	562.83	209.30	353.52
Frequency	128	26	102

COMMENT

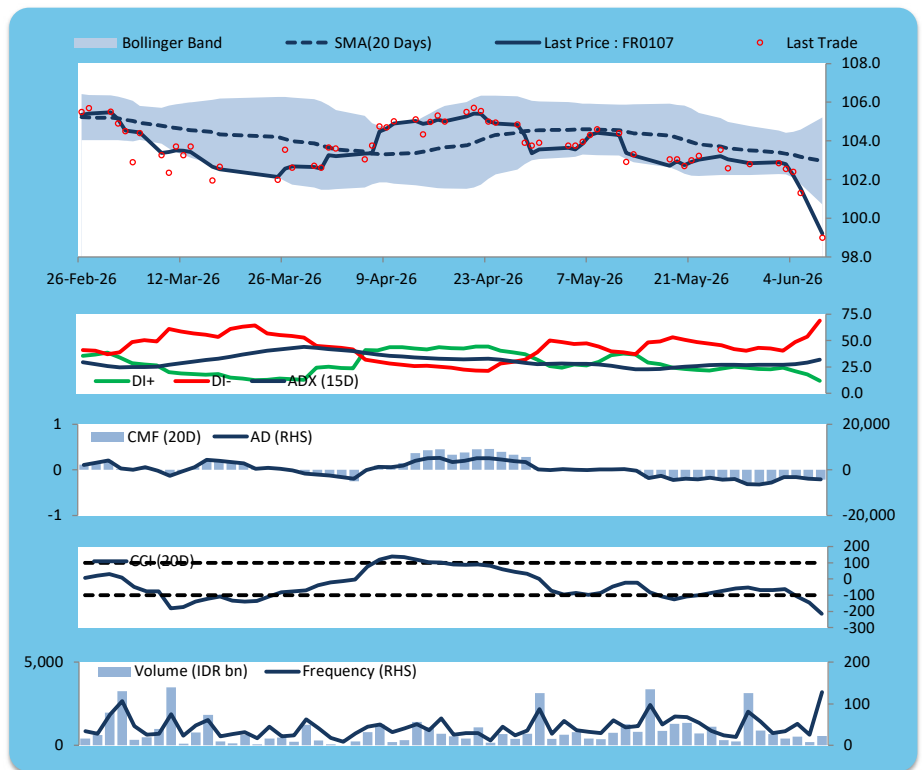
Price declined; moderate trade volume; downward trend continues to strengthen; selling pressure increased; CCI declined.

SELL

FEATURES

Issue Date	9-Jan-25
Mature Date	15-Aug-45
Tenor (year)	19.2
Coupon Rate	7.13
Last Yield	7.20
Modified Duration	10.11
Previous Coupon Date	15-Feb-26
Next Coupon Date	15-Aug-26

Sources: Bloomberg (Price); IDX



ECONOMIC AND FIXED INCOME RESEARCH TEAM**Chief Economist and Head Fixed Income Research**

Helmy Kristanto	helmy.kristanto@brids.co.id	(62-21) 5091 4100 ext. 3400
-----------------	-----------------------------	-----------------------------

Economists

Relindya Yuriswari Salehaningtyas	relindya.salehaningtyas@brids.co.id	(62-21) 5091 4100 ext. 3609
Ebenezer Mesotuhu Harefa	ebenezer.harefa@brids.co.id	(62-21) 5091 4100 ext. 3609

Credit Analyst

Laras Nerpatari Suliyas	laras.nerpatari@brids.co.id	(62-21) 5091 4100 ext. 3403
-------------------------	-----------------------------	-----------------------------

Production & Database Management

Eka Nuraini	ekan@brids.co.id	(62-21) 5091 4100 ext. 3407
Faiqul Kurnia Muslim	faiqul.muslim@brids.co.id	(62-21) 5091 4100 ext. 3402

INSTITUTIONAL DEBT SALES & TRADING TEAM**Head of Debt Capital Market**

Yopi Chandra Wardhani	yopi.wardhani@brids.co.id	(62-21) 5091 4100 ext. 3220
-----------------------	---------------------------	-----------------------------

Debt Sales

Rachmat Eko Putranto	rachmat.putranto@brids.co.id	(62-21) 5091 4100 ext. 3218
Rafi Hutama Soeriaatmadja	rafi.soeriaatmadja@brids.co.id	(62-21) 5091 4100 ext. 3926
Adzkia Zahra	adzkia.zahra@brids.co.id	(62-21) 5091 4100 ext. 3924

Debt Brokerage

Citra Isramij P.	citra.isramij@brids.co.id	(62-21) 5091 4100 ext. 3228
Sisca Emilia	sisca.emilia@brids.co.id	(62-21) 5091 4100 ext. 3921
Deviano Sujitno	deviano.sujitno@brids.co.id	(62-21) 5091 4100 ext. 3925

DISCLAIMER: The information contained in this report has been taken from sources which we deem reliable. However, none of P.T. BRI Danareksa Sekuritas and/or its affiliated companies and/or their respective employees and/or agents makes any representation or warranty (express or implied) or accepts any responsibility or liability as to, or in relation to, the accuracy or completeness of the information and opinions contained in this report or as to any information contained in this report or any other such information or opinions remaining unchanged after the issue thereof. We expressly disclaim any responsibility or liability (express or implied) of P.T. BRI Danareksa Sekuritas, its affiliated companies and their respective employees and agents whatsoever and howsoever arising (including, without limitation for any claims, proceedings, action, suits, losses, expenses, damages or costs) which may be brought against or suffered by any person as a result of acting in reliance upon the whole or any part of the contents of this report and neither P.T. BRI Danareksa Sekuritas, its affiliated companies or their respective employees or agents accepts liability for any errors, omissions or mis-statements, negligent or otherwise, in the report and any liability in respect of the report or any inaccuracy therein or omission therefrom which might otherwise arise is hereby expressly disclaimed. The information contained in this report is not to be taken as any recommendation made by P.T. BRI Danareksa Sekuritas or any other person to enter into any agreement with regard to any investment mentioned in this document. This report is prepared for general circulation. It does not have regard to the specific person who may receive this report. In considering any investments you should make your own independent assessment and seek your own professional financial and legal advice.