

### MOST ACTIVE GOVERNMENT BONDS

Bond	Coupon	Maturity	Last Price	Yield	Volume (IDR bn)
FR0059	7.000	15-May-27	99.96	7.013	2,706.35
PBS003	6.000	15-Jan-27	99.51	6.694	2,257.39
PBS032	4.875	15-Jul-26	99.82	6.376	1,890.09
FR0108	6.500	15-Apr-36	98.00	6.782	1,688.75
FR0109	5.875	15-Mar-31	95.75	6.776	1,605.41
FR0103	6.750	15-Jul-35	99.40	6.832	1,320.03
FR0106	7.125	15-Aug-40	101.50	6.919	1,268.63
FR0104	6.500	15-Jul-30	98.85	6.834	942.77
FR0064	6.125	15-May-28	98.70	6.758	764.41
FR0100	6.625	15-Feb-34	98.66	6.829	728.97

Coupon, Last Price & Yield are in %; Volume is in IDR bn; Rating code: id(Pefindo) & idn (Fitch Indonesia)  
Sources: Bloomberg; Indonesia Stock Exchange (Volume)

### MOST ACTIVE CORPORATE BONDS

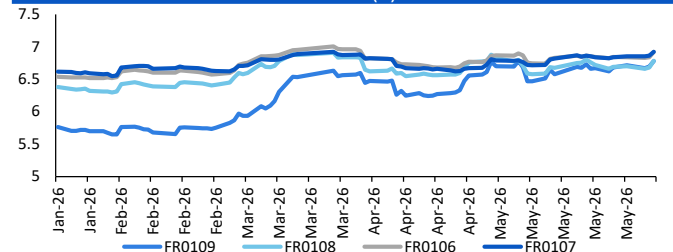
Bond	Rating	Coupon	Maturity	Last Price	Yield	Volume
SMOPPM02ACN2	A+	10.000	29-Jul-28	102.54	8.69	412.00
SMSMII03ACN2	AAA	5.000	7-Dec-26	98.44	5.08	350.00
FIFA06BCN4	AAA	6.900	6-Sep-27	100.37	6.59	320.00
MBMA01BCN3	A	8.250	9-Dec-30	91.37	10.68	250.00
PALM02BCN3	A	9.750	18-Sep-27	101.12	8.82	220.00
PPGD01BSOCN2	AAA	6.800	28-May-28	101.87	5.79	210.00
SMARMA01BCN1	A-	9.000	29-Oct-30	100.50	8.86	204.00
SISMDR01CN3	A+	8.250	21-May-29	100.21	8.17	195.45
SIBALI01BCN3	A	7.250	5-Dec-28	95.72	9.18	186.00
WISLO2B	A	8.000	8-Aug-26	100.18	7.99	180.00

### SOVEREIGN BOND YIELDS

Country	Tenor	Coupon (%)	MA LTM as of			Spread over UST YC (bps)		
			4-Jun-26	4-Jun-26	4-Jun-26	4-Jun-26	May	Apr
United States	2yr		4.11	4.05	3.89			
USD	5yr		4.19	4.14	4.01			
	10yr		4.48	4.44	4.37			
German	2yr	0.25	2.66	2.53	2.64	-140	-148	-123
EUR	5yr	1.00	2.75	2.64	2.75	-145	-151	-126
	10yr	1.75	3.03	2.94	3.04	-145	-150	-134
Indonesia	2yr	3.50	4.27	4.18	4.20	21	18	32
USD	5yr	3.85	4.81	4.73	4.57	62	59	56
	10yr	6.63	5.59	5.50	5.35	111	106	98
Brazil	2yr	0.00	14.31	13.82	13.71	1,026	982	984
BRL	3yr	0.00	14.47	13.94	13.81	1,042	994	994
	10yr	10.00	14.52	14.12	13.98	1,047	1,012	1,010
Philippines	2yr	6.00	6.29	6.20	5.29	224	219	142
PHP	5yr	7.88	7.48	7.45	6.84	329	331	283
	10yr	11.38	7.50	7.42	6.92	302	298	254
Thailand	2yr	3.13	1.25	1.24	1.24	-281	-276	-264
THB	5yr	3.45	1.71	1.68	1.61	-248	-246	-240
	10yr	3.63	2.25	2.33	2.20	-223	-211	-218
India	2yr	7.59	6.33	6.42	6.26	227	241	239
INR	5yr	7.28	6.82	6.82	6.77	262	268	277
	10yr	8.83	7.00	7.01	7.04	253	257	266
Malaysia	3yr	3.17	3.25	3.24	3.21	-85	-82	-68
MYR	5yr	3.26	3.42	3.41	3.36	-78	-74	-65
	10yr	4.18	3.57	3.58	3.57	-90	-86	-80

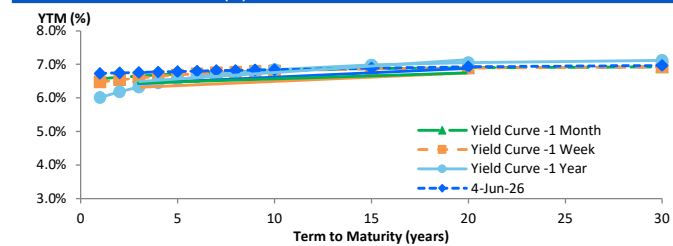
Sources: Bloomberg (Current Yield Curve), US Treasury

### YIELD OF GOVERNMENT BOND BENCHMARK (%)



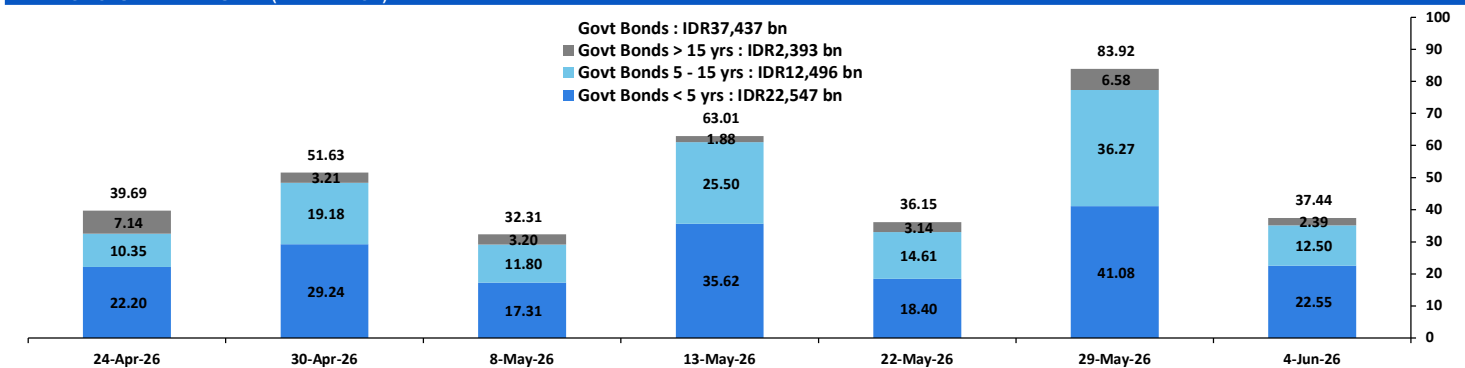
Source: Bloomberg

### YIELD CURVE MOVEMENT (%)



Source: Bloomberg

### TRADING VOLUME BY MATURITY (IDR TRILLION)



Sources: Indonesia Stock Exchange

### CURRENCY

Price	4-Jun-26	-1 Day	-1 Week	-1 Month	EoP2025
DX	99.32	↓	99.53	99.02	98.37
USD/IDR	18,033	↑	17,950	17,789	17,380
EUR/USD	1.16	↑	1.16	1.17	1.17
USD/JPY	159.85	↓	160.07	159.24	157.24
USD/CNY	6.774	↓	6.779	6.776	6.828
USD/MYR	4.013	↑	3.999	3.979	4.060
SGD/IDR	14,051	↑	14,003	13,941	13,644

Source: Bloomberg

### COMMODITY

Price	4-Jun-26	-1 Day	-1 Week	-1 Month	EoP2025
CPO (Palm Oil)	4,536	↑	4,470	4,462	4,554
Coal	147.50	↑	146.25	131.50	135.55
Gold (XAU/USD)	4,475	↑	4,435	4,495	4,522
Nickel	18,685	↓	18,914	18,951	19,216
Copper	650.80	↑	650.75	642.60	579.50
Brent	95.88	↓	97.81	93.71	114.44
WTI	94.37	↓	96.02	88.90	106.42

### PHEI FAIR SPREAD

	1Y	2Y	3Y	4Y	5Y	6Y	7Y	8Y	9Y	10Y
AAA	37	41	43	47	50	53	56	58	59	60
AA+	42	45	47	49	52	55	57	59	60	61
AA	57	62	65	67	70	72	75	77	78	79
AA-	92	102	106	110	114	117	120	122	124	125
A+	140	157	164	171	177	182	186	189	191	192
A	193	215	227	238	247	255	260	264	266	268
A-	244	270	286	301	315	326	334	338	341	343
BBB+	293	319	339	361	381	395	405	410	414	416
BBB	341	367	391	419	444	463	474	482	486	488

\*interpolated, as of June 04, 2026 (bps)

Sources: PHEI, Bloomberg

### SBN HOLDING - (IDR tn)

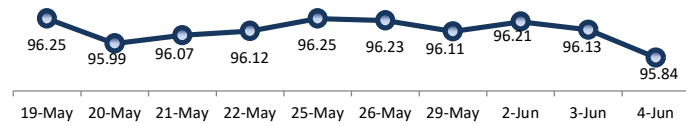
	02-Jun-2026	WoW	MoM	YTD
Banks	1,211.8	(6.0)	(13.2)	(116.9)
Bank Indonesia (exclude repo)	1,873.1	19.7	25.3	231.5
Non-Banks:				
Mutual Fund	257.6	1.7	3.2	14.7
Insurance & Pension Fund	1,400.2	10.1	9.8	109.5
Foreign Investor	867.9	3.6	4.7	(10.7)
Individual	552.9	0.1	0.0	15.6
Others	713.9	1.2	0.7	65.0
<b>Total</b>	<b>6,877.4</b>	<b>30.5</b>	<b>30.5</b>	<b>308.6</b>
Domestic Investor	4,136.4	7.2	0.5	87.9
Foreign Investor	867.9	3.6	4.7	(10.7)
Bank Indonesia (include repo)	1,721.1	1.6	1.8	80.5

Source: DJPPR (Processed)

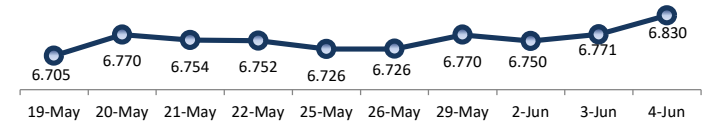
VALUATIONS OF GOVERNMENT BONDS

Bond	Issue Date	Mature Date	Coupon	TTM	Modified Duration	YTM (Change)	Prev Closing Price	Fair Yield Range	Fair Price Range	Last Trade					
										Date	Price	Vol (IDR bn)	Freq		
FR0056	23-Sep-10	15-Sep-26	8.38	0.3	0.27	6.44 <span style="color: green;">↑ 0.9bps</span>	100.48	6.182 6.995	100.34 100.57	4-Jun-26	101.00	53.79	31		
FR0090	8-Jul-21	15-Apr-27	5.13	0.9	0.82	6.91 <span style="color: green;">↑ 11.5bps</span>	98.54	6.545 7.173	98.31 98.82	4-Jun-26	98.65	146.98	98		
FR0059	15-Sep-11	15-May-27	7.00	0.9	0.90	7.01 <span style="color: green;">↑ 6.9bps</span>	99.98	6.600 7.169	99.84 100.36	4-Jun-26	99.96	2,706.35	143		
FR0042	25-Jan-07	15-Jul-27	10.25	1.1	1.01	6.97 <span style="color: green;">↑ 8.4bps</span>	103.41	6.617 6.995	103.41 103.82	25-May-26	103.03	0.02	1		
FR0094	4-Mar-22	15-Jan-28	5.60	1.6	1.49	6.04 <span style="color: green;">↓ -2.2bps</span>	99.34	6.071 6.584	98.51 99.28	4-Jun-26	97.99	1.89	1		
FR0047	30-Aug-07	15-Feb-28	10.00	1.7	1.51	6.83 <span style="color: green;">↑ 8.8bps</span>	104.95	6.665 6.882	104.90 105.25	4-Jun-26	106.28	0.02	1		
FR0064	13-Aug-12	15-May-28	6.13	1.9	1.80	6.76 <span style="color: green;">↑ 8.7bps</span>	98.86	6.633 6.845	98.70 99.08	4-Jun-26	98.70	764.41	56		
FR0095	19-Aug-22	15-Aug-28	6.38	2.2	1.98	6.81 <span style="color: green;">↑ 10.9bps</span>	99.11	6.539 6.814	99.10 99.66	4-Jun-26	99.35	79.20	36		
FR0099	27-Jan-23	15-Jan-29	6.40	2.6	2.31	6.61 <span style="color: green;">↓ -1.4bps</span>	99.51	6.590 6.901	98.81 99.54	1-Jul-25	99.50	49.05	2		
FR0071	12-Sep-13	15-Mar-29	9.00	2.8	2.40	6.72 <span style="color: green;">↑ 6.6bps</span>	105.65	6.628 6.784	105.51 105.92	4-Jun-26	106.00	130.50	6		
FR0101	2-Nov-23	15-Apr-29	6.88	2.9	2.54	6.76 <span style="color: green;">↑ 11.2bps</span>	100.28	6.592 6.783	100.22 100.72	4-Jun-26	100.03	359.87	41		
FR0078	27-Sep-18	15-May-29	8.25	2.9	2.58	6.79 <span style="color: green;">↑ 9.4bps</span>	103.83	6.650 6.802	103.80 104.21	4-Jun-26	104.10	55.48	22		
FR0104	22-Aug-24	15-Jul-30	6.50	4.1	3.46	6.83 <span style="color: green;">↑ 8.1bps</span>	98.82	6.720 6.861	98.72 99.21	4-Jun-26	98.85	942.77	61		
FR0052	20-Aug-09	15-Aug-30	10.50	4.2	3.35	6.60 <span style="color: green;">↑ 2.8bps</span>	114.05	6.558 6.734	113.55 114.25	3-Jun-26	112.88	0.21	4		
FR0082	1-Aug-19	15-Sep-30	7.00	4.3	3.60	6.70 <span style="color: green;">↑ 2.3bps</span>	101.08	6.665 6.797	100.73 101.22	4-Jun-26	100.50	386.01	55		
FRSDG001	27-Oct-22	15-Oct-30	7.38	4.4	3.67	6.29 <span style="color: green;">↑ 4.5bps</span>	104.05	6.272 6.456	103.44 104.14	4-Jun-26	102.42	15.19	1		
FR0087	13-Aug-20	15-Feb-31	6.50	4.7	3.91	6.76 <span style="color: green;">↑ 5.3bps</span>	98.95	6.719 6.857	98.57 99.12	4-Jun-26	98.66	92.32	37		
<b>FR1019</b>	<b>15-Aug-25</b>	<b>15-Mar-31</b>	<b>5.88</b>	<b>4.8</b>	<b>4.03</b>	<b>6.78</b>	<b>96.37</b>	<b>6.689</b>	<b>6.829</b>	<b>96.15</b>	<b>96.70</b>	<b>4-Jun-26</b>	<b>95.75</b>	<b>1,605.41</b>	<b>95</b>
FR0085	4-May-20	15-Apr-31	7.75	4.9	3.99	6.63 <span style="color: green;">→ 0.0bps</span>	104.56	6.573 6.804	103.85 104.82	4-Jun-26	102.90	0.01	1		
FR0073	6-Aug-15	15-May-31	8.75	4.9	4.01	6.71 <span style="color: green;">↑ 3.0bps</span>	108.46	6.621 6.799	108.07 108.85	4-Jun-26	107.75	0.38	4		
FR0054	22-Jul-10	15-Jul-31	9.50	5.1	3.96	6.72 <span style="color: green;">↓ -0.1bps</span>	111.85	6.667 6.855	111.23 112.09	3-Jun-26	111.30	0.00	1		
FR0091	8-Jul-21	15-Apr-32	6.38	5.9	4.77	6.81 <span style="color: green;">↑ 5.7bps</span>	97.94	6.712 6.882	97.58 98.38	4-Jun-26	98.15	110.86	90		
FR0058	21-Jul-11	15-Jun-32	8.25	6.0	4.59	6.79 <span style="color: green;">↑ 4.7bps</span>	107.14	6.657 6.941	106.36 107.80	4-Jun-26	108.80	0.21	3		
FR0074	10-Nov-16	15-Aug-32	7.50	6.2	4.82	6.80 <span style="color: green;">↑ 4.1bps</span>	103.48	6.736 6.842	103.26 103.81	4-Jun-26	104.55	5.03	13		
FR0096	19-Aug-22	15-Feb-33	7.00	6.7	5.18	6.82 <span style="color: green;">↑ 5.7bps</span>	100.93	6.710 6.884	100.60 101.53	4-Jun-26	100.35	91.22	42		
FR0065	30-Aug-12	15-May-33	6.63	6.9	5.47	6.78 <span style="color: green;">↑ 1.8bps</span>	99.13	6.561 6.928	98.35 100.35	4-Jun-26	98.46	97.94	48		
FR0100	24-Aug-23	15-Feb-34	6.63	7.7	5.82	6.83 <span style="color: green;">↑ 5.0bps</span>	98.79	6.741 6.880	98.48 99.30	4-Jun-26	98.66	728.97	78		
FR0068	1-Aug-13	15-Mar-34	8.38	7.8	5.67	6.85 <span style="color: green;">↑ 6.8bps</span>	109.05	6.756 6.897	108.77 109.65	4-Jun-26	108.73	273.28	28		
FR0080	4-Jul-19	15-Jun-35	7.50	9.0	6.34	6.84 <span style="color: green;">↑ 6.3bps</span>	104.39	6.732 6.888	104.06 105.13	4-Jun-26	103.97	57.59	40		
FR0103	29-Jul-25	15-Jul-35	6.75	9.1	6.55	6.83 <span style="color: green;">↑ 7.8bps</span>	99.44	6.721 6.910	98.92 100.18	4-Jun-26	99.40	1,320.03	70		
<b>FR1018</b>	<b>31-Jul-25</b>	<b>15-Apr-36</b>	<b>6.50</b>	<b>9.9</b>	<b>7.10</b>	<b>6.78</b>	<b>97.98</b>	<b>6.629</b>	<b>6.839</b>	<b>97.59</b>	<b>99.07</b>	<b>4-Jun-26</b>	<b>98.00</b>	<b>1,688.75</b>	<b>130</b>
FR0072	9-Jul-15	15-May-36	8.25	9.9	6.86	6.86 <span style="color: green;">↑ 4.8bps</span>	109.91	6.759 6.907	109.54 110.66	4-Jun-26	109.30	144.25	16		
FR0088	7-Jan-21	15-Jun-36	6.25	10.0	7.08	6.78 <span style="color: green;">↑ 5.8bps</span>	96.22	6.654 6.824	95.88 97.07	4-Jun-26	95.00	124.39	105		
FR0045	24-May-07	15-May-37	9.75	10.9	7.08	6.92 <span style="color: green;">↑ 4.5bps</span>	121.48	6.817 6.942	121.28 122.36	4-Jun-26	120.03	0.01	1		
FR0093	6-Jan-22	15-Jul-37	6.38	11.1	7.61	6.82 <span style="color: green;">↑ 4.4bps</span>	96.56	6.680 6.835	96.45 97.62	4-Jun-26	99.50	17.32	28		
FR0075	10-Aug-17	15-May-38	7.50	11.9	7.89	6.91 <span style="color: green;">↑ 3.9bps</span>	104.76	6.829 6.914	104.71 105.42	4-Jun-26	104.20	9.49	25		
FR0098	15-Sep-22	15-Jun-38	7.13	12.0	7.78	6.92 <span style="color: green;">↑ 5.3bps</span>	101.67	6.786 6.930	101.57 102.75	4-Jun-26	102.90	176.42	38		
FR0050	24-Jan-08	15-Jul-38	10.50	12.1	7.27	6.83 <span style="color: green;">↑ 4.0bps</span>	129.85	6.589 7.026	128.01 132.27	3-Jun-26	130.40	0.40	4		
FR0079	7-Jan-19	15-Apr-39	8.38	12.9	8.02	6.98 <span style="color: green;">↑ 7.5bps</span>	111.70	6.810 6.949	111.98 113.25	4-Jun-26	111.30	25.09	30		
FR0083	7-Nov-19	15-Apr-40	7.50	13.9	8.60	6.93 <span style="color: green;">↑ 5.8bps</span>	105.04	6.841 6.930	105.01 105.83	4-Jun-26	103.60	46.04	45		
<b>FR1016</b>	<b>9-Jan-25</b>	<b>15-Aug-40</b>	<b>7.13</b>	<b>14.2</b>	<b>8.72</b>	<b>6.92</b>	<b>101.83</b>	<b>6.780</b>	<b>6.937</b>	<b>101.67</b>	<b>103.10</b>	<b>4-Jun-26</b>	<b>101.50</b>	<b>1,268.63</b>	<b>79</b>
FR0057	21-Apr-11	15-May-41	9.50	14.9	8.64	6.85 <span style="color: green;">↑ 1.8bps</span>	124.54	6.804 6.870	124.32 125.04	14-Apr-26	126.50	5.25	2		
FR0062	9-Feb-12	15-Apr-42	6.38	15.9	9.62	6.92 <span style="color: green;">↑ 3.8bps</span>	94.81	6.859 6.917	94.82 95.36	4-Jun-26	97.75	17.52	30		
FR0092	8-Jul-21	15-Jun-42	7.13	16.0	9.24	6.91 <span style="color: green;">↑ 3.5bps</span>	102.06	6.794 6.910	102.06 103.20	4-Jun-26	100.75	127.73	62		
FR0097	19-Aug-22	15-Jun-43	7.13	17.0	9.55	6.90 <span style="color: green;">↑ 4.3bps</span>	102.19	6.747 6.915	102.08 103.79	4-Jun-26	99.55	26.68	78		
FR0067	18-Jul-13	15-Feb-44	8.75	17.7	9.44	6.93 <span style="color: green;">↑ 1.2bps</span>	118.43	6.886 6.972	117.90 118.88	4-Jun-26	118.80	2.00	1		
<b>FR1017</b>	<b>9-Jan-25</b>	<b>15-Aug-45</b>	<b>7.13</b>	<b>19.2</b>	<b>10.26</b>	<b>6.92</b>	<b>102.15</b>	<b>6.759</b>	<b>6.948</b>	<b>101.84</b>	<b>103.89</b>	<b>4-Jun-26</b>	<b>102.40</b>	<b>523.54</b>	<b>52</b>
FR0076	22-Sep-17	15-May-48	7.38	21.9	11.00	6.97 <span style="color: green;">↑ 5.6bps</span>	104.57	6.887 6.985	104.33 105.47	4-Jun-26	103.45	31.75	77		
FR0089	7-Jan-21	15-Aug-51	6.88	25.2	11.59	6.97 <span style="color: green;">↑ 0.5bps</span>	98.87	6.923 7.040	98.05 99.41	4-Jun-26	98.00	70.08	172		
FR0102	5-Jan-24	15-Jul-54	6.88	28.1	11.97	6.96 <span style="color: green;">↑ 1.8bps</span>	98.92	6.922 7.044	97.94 99.41	4-Jun-26	99.65	149.57	109		
FR0055	27-Aug-24	15-Jul-64	6.88	38.1	13.05	6.91 <span style="color: green;">↑ 0.4bps</span>	99.53	6.917 7.084	97.25 99.42	14-Apr-25	99.00	0.10	1		
ORI024T6	8-Nov-23	15-Oct-29	6.35	3.4	-	6.61 <span style="color: green;">↑ 3.1bps</span>	99.23	6.430 6.787	98.69 99.76	4-Jun-26	98.50	1.08	13		
ORI025T6	28-Feb-24	15-Feb-30	6.40	3.7	-	6.63 <span style="color: green;">↑ 2.5bps</span>	99.26	6.377 6.765	98.81 100.08	4-Jun-26	98.15	2.49	18		
ORI026T6	30-Oct-24	15-Oct-30	6.40	4.4	-	6.67 <span style="color: green;">↑ 3.5bps</span>	99.00	6.289 6.717	98.80 100.42	4-Jun-26	98.00	0.65	6		
PBS003	2-Feb-12	15-Jan-27	6.00	0.6	0.58	6.69 <span style="color: green;">↑ 4.9bps</span>	99.59	6.477 7.290	99.23 99.71	4-Jun-26	99.51	2,257.39	161		
PBS020	22-Oct-18	15-Oct-27	9.00	1.4	1.27	5.07 <span style="color: green;">↓ -2.3bps</span>	105.06	5.486 6.299	103.46 104.54	31-Jul-24	108.25	0.50	1		
PBS018	4-Jun-18	15-May-28	7.63	1.9	1.79	5.97 <span style="color: green;">↑ 0.8bps</span>	102.97	6.061 6.774	101.52 103.01	3-Sep-19	99.29	2,000.00	2		
<b>PBS030</b>	<b>4-Jun-21</b>	<b>15-Jul-28</b>	<b>5.88</b>	<b>2.1</b>	<b>1.91</b>	<b>6.66</b>	<b>98.47</b>	<b>6.644</b>	<b>6.916</b>	<b>97.98</b>	<b>98.50</b>	<b>4-Jun-26</b>	<b>98.70</b>	<b>7.58</b>	<b>187</b>
PBSG001	22-Sep-22	15-Sep-29	6.63	3.3	2.87	6.52 <span style="color: green;">↓ -9.1bps</span>	100.29	6.289 6.872	99.27 100.97	29-May-26	99.70	60.00	1		
IFR0006	1-Apr-10	15-Mar-30	10.25	3.8	3.11	6.01 <span style="color: green;">↓ -0.7bps</span>	114.09	6.002 6.588	112.06 114.16	11-Mar-26	113.43	2.00	2		
PBS023	15-May-19	15-May-30	8.13	3.9	3.36	5.88 <span style="color: green;">↓ -0.4bps</span>	107.79	5.853 6.285	106.33 107.90	3-Jun-26	103.91	17.00	5		
<b>PBS040</b>	<b>30-Oct-25</b>	<b>15-Nov-30</b>	<b>5.00</b>	<b>4.4</b>	<b>3.89</b>	<b>6.57</b>	<b>94.06</b>	<b>6.285</b>	<b>6.821</b>	<b>93.11</b>	<b>95.08</b>	<b>4-Jun-26</b>	<b>93.00</b>	<b>17.35</b>	<b>23</b>
PBS012	28-Jan-16	15-Nov-31	8.88	5.4	4.33	6.65 <span style="color: green;">→ 0.0bps</span>	110.03	5.736 6							

PRICE INDEX



YIELD INDEX



TECHNICAL ANALYSIS

FR0109

INDICATORS	4-Jun-26	-1 Day	Change
Last Price	96.36	96.68	(0.32)
DI+	15.79	17.15	(1.36)
DI-	41.23	36.33	4.90
ADX (15D)	39.66	39.30	0.35
A/D	-18,879.91	-23,943.76	5,063.85
CMF(20D)	-0.247	-0.285	0.04
CCI	-75.27	-18.64	(56.63)
Volume (IDR bn)	1,605.41	2,248.19	(642.78)
Frequency	95	92	3

COMMENT

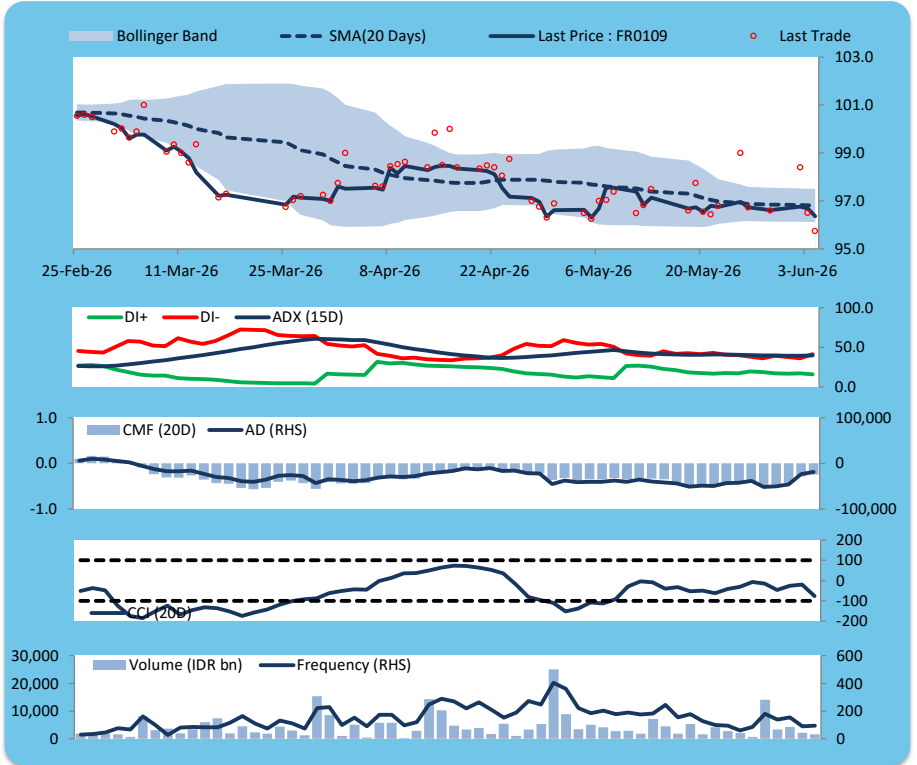
Price declined; heavy trade volume; downward trend continues to strengthen; selling pressure eased; CCI declined.

SELL

FEATURES

Issue Date	14-Aug-25
Mature Date	15-Mar-31
Tenor	4.8
Coupon Rate	5.88
Last Yield	6.78
Modified Duration	4.03
Previous Coupon Date	15-Mar-26
Next Coupon Date	15-Sep-26

Sources: Bloomberg (Price); IDX



FR0108

INDICATORS	4-Jun-26	-1 Day	Change
Last Price	97.98	98.71	(0.73)
DI+	25.71	29.26	(3.54)
DI-	40.88	32.78	8.10
ADX (15D)	19.66	19.43	0.22
A/D	-574.75	-117.11	(457.64)
CMF(20D)	-0.015	-0.003	(0.01)
CCI	-35.18	40.99	(76.17)
Volume (IDR bn)	1,688.75	1,748.86	(60.11)
Frequency	130	153	(23)

COMMENT

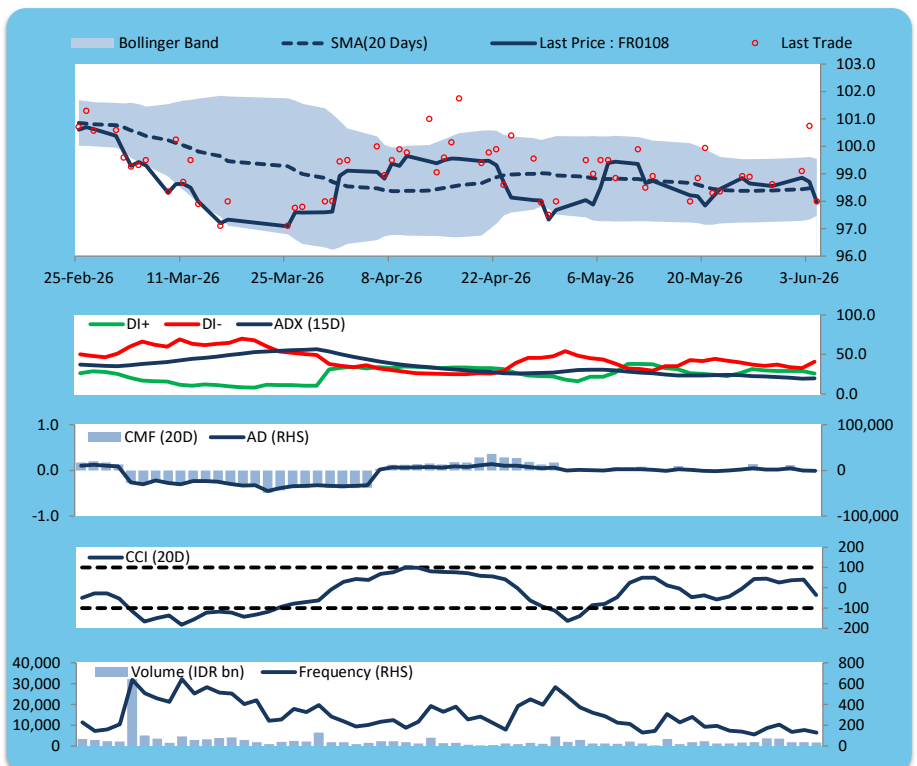
Price declined; heavy trade volume; downward trend continues to weaken; selling pressure increased; CCI declined.

SELL

FEATURES

Issue Date	31-Jul-25
Mature Date	15-Apr-36
Tenor	9.9
Coupon Rate	6.50
Last Yield	6.78
Modified Duration	7.10
Previous Coupon Date	15-Apr-26
Next Coupon Date	15-Oct-26

Sources: Bloomberg (Price); IDX



**FR0106**

INDICATORS	4-Jun-26	-1 Day	Change
Last Price	101.83	102.54	(0.71)
DI+	24.34	28.78	(4.44)
DI-	47.71	38.17	9.53
ADX (15D)	22.21	21.48	0.73
A/D	-4,465.65	-3,600.79	(864.86)
CMF(20D)	-0.194	-0.162	(0.03)
CCI	-92.20	-5.88	(86.32)
Volume (IDR bn)	1,268.63	840.87	427.76
Frequency	79	43	36

**COMMENT**

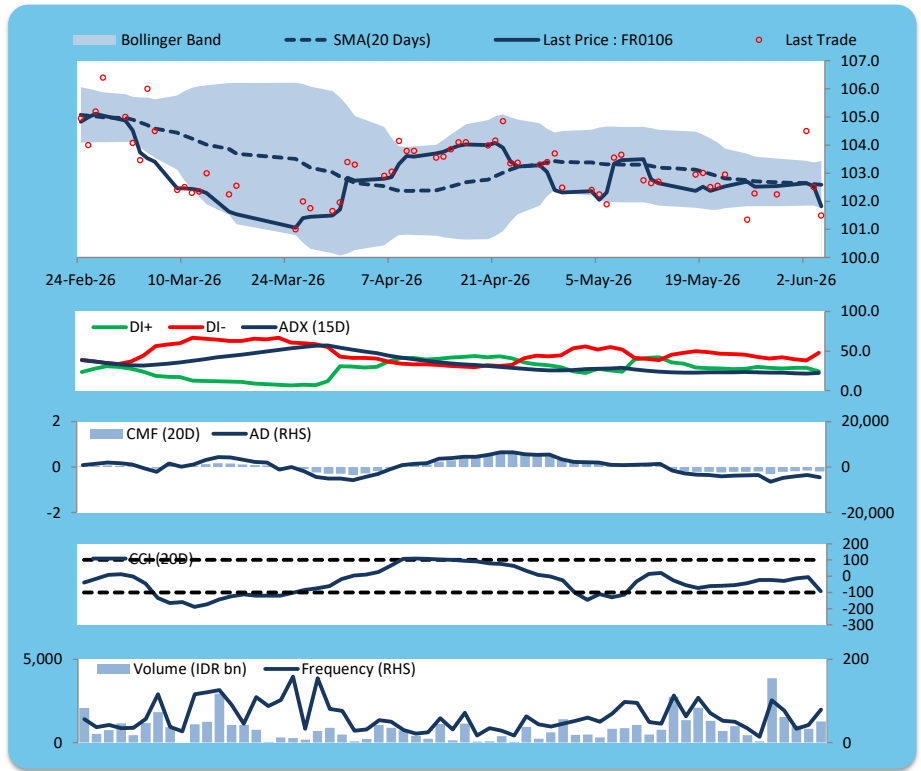
Price declined; heavy trade volume; downward trend continues to strengthen; selling pressure increased; CCI declined.

**SELL**

**FEATURES**

Issue Date	9-Jan-25
Mature Date	15-Aug-40
Tenor	14.2
Coupon Rate	7.13
Last Yield	6.92
Modified Duration	8.72
Previous Coupon Date	15-Feb-26
Next Coupon Date	15-Aug-26

Sources: Bloomberg (Price); IDX



**FR0107**

INDICATORS	4-Jun-26	-1 Day	Change
Last Price	102.15	102.80	(0.64)
DI+	20.97	24.35	(3.37)
DI-	48.63	40.44	8.19
ADX (15D)	27.84	26.99	0.85
A/D	-3,238.42	-3,108.36	(130.06)
CMF(20D)	-0.162	-0.156	(0.01)
CCI	-110.24	-63.25	(46.99)
Volume (IDR bn)	523.54	418.86	104.69
Frequency	52	34	18

**COMMENT**

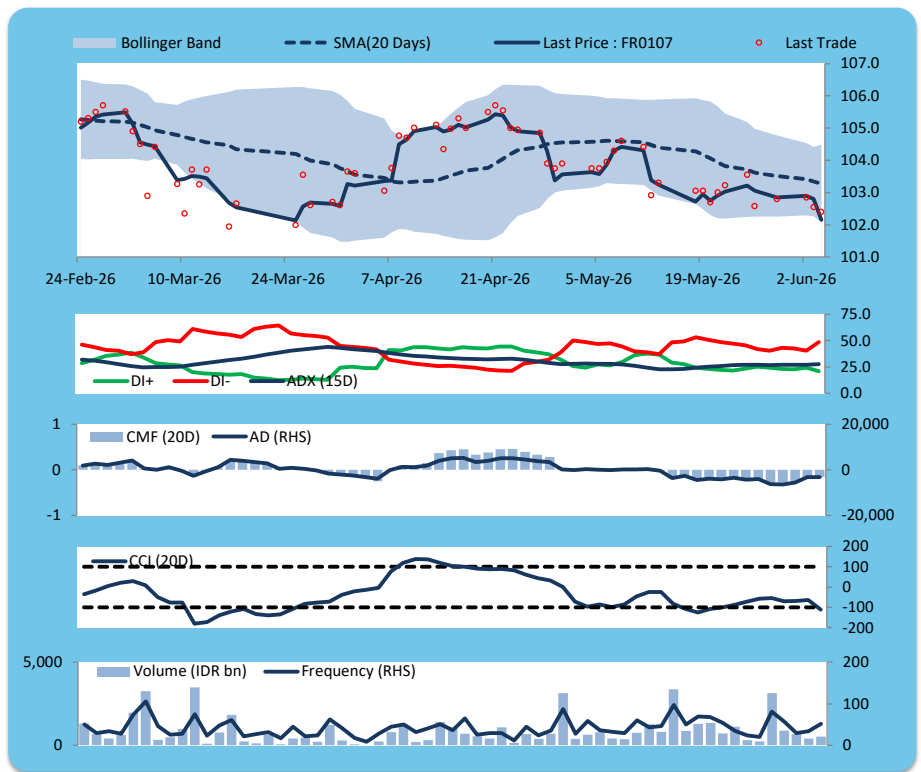
Price declined; moderate trade volume; downward trend continues to strengthen; selling pressure increased; CCI declined.

**SELL**

**FEATURES**

Issue Date	9-Jan-25
Mature Date	15-Aug-45
Tenor (year)	19.2
Coupon Rate	7.13
Last Yield	6.92
Modified Duration	10.26
Previous Coupon Date	15-Feb-26
Next Coupon Date	15-Aug-26

Sources: Bloomberg (Price); IDX



**ECONOMIC AND FIXED INCOME RESEARCH TEAM****Chief Economist and Head Fixed Income Research**

Helmy Kristanto	helmy.kristanto@brids.co.id	(62-21) 5091 4100 ext. 3400
-----------------	-----------------------------	-----------------------------

**Economists**

Relindya Yuriswari Salehaningtyas	relindya.salehaningtyas@brids.co.id	(62-21) 5091 4100 ext. 3609
Ebenezer Mesotuhu Harefa	ebenezer.harefa@brids.co.id	(62-21) 5091 4100 ext. 3609

**Credit Analyst**

Laras Nerpatari Suliyas	laras.nerpatari@brids.co.id	(62-21) 5091 4100 ext. 3403
-------------------------	-----------------------------	-----------------------------

**Production & Database Management**

Eka Nuraini	ekan@brids.co.id	(62-21) 5091 4100 ext. 3407
Faiqul Kurnia Muslim	faiqul.muslim@brids.co.id	(62-21) 5091 4100 ext. 3402

**INSTITUTIONAL DEBT SALES & TRADING TEAM****Head of Debt Capital Market**

Yopi Chandra Wardhani	yopi.wardhani@brids.co.id	(62-21) 5091 4100 ext. 3220
-----------------------	---------------------------	-----------------------------

**Debt Sales**

Rachmat Eko Putranto	rachmat.putranto@brids.co.id	(62-21) 5091 4100 ext. 3218
Rafi Hutama Soeriaatmadja	rafi.soeriaatmadja@brids.co.id	(62-21) 5091 4100 ext. 3926
Adzkia Zahra	adzkia.zahra@brids.co.id	(62-21) 5091 4100 ext. 3924

**Debt Brokerage**

Citra Isramij P.	citra.isramij@brids.co.id	(62-21) 5091 4100 ext. 3228
Sisca Emilia	sisca.emilia@brids.co.id	(62-21) 5091 4100 ext. 3921
Deviano Sujitno	deviano.sujitno@brids.co.id	(62-21) 5091 4100 ext. 3925

**DISCLAIMER:** The information contained in this report has been taken from sources which we deem reliable. However, none of P.T. BRI Danareksa Sekuritas and/or its affiliated companies and/or their respective employees and/or agents makes any representation or warranty (express or implied) or accepts any responsibility or liability as to, or in relation to, the accuracy or completeness of the information and opinions contained in this report or as to any information contained in this report or any other such information or opinions remaining unchanged after the issue thereof. We expressly disclaim any responsibility or liability (express or implied) of P.T. BRI Danareksa Sekuritas, its affiliated companies and their respective employees and agents whatsoever and howsoever arising (including, without limitation for any claims, proceedings, action, suits, losses, expenses, damages or costs) which may be brought against or suffered by any person as a result of acting in reliance upon the whole or any part of the contents of this report and neither P.T. BRI Danareksa Sekuritas, its affiliated companies or their respective employees or agents accepts liability for any errors, omissions or mis-statements, negligent or otherwise, in the report and any liability in respect of the report or any inaccuracy therein or omission therefrom which might otherwise arise is hereby expressly disclaimed. The information contained in this report is not to be taken as any recommendation made by P.T. BRI Danareksa Sekuritas or any other person to enter into any agreement with regard to any investment mentioned in this document. This report is prepared for general circulation. It does not have regard to the specific person who may receive this report. In considering any investments you should make your own independent assessment and seek your own professional financial and legal advice.