

MOST ACTIVE GOVERNMENT BONDS

Bond	Coupon	Maturity	Last Price	Yield	Volume (IDR bn)
FR0109	5.875	15-Mar-31	98.40	6.676	4,388.11
FR0103	6.750	15-Jul-35	100.10	6.760	2,154.10
FR0108	6.500	15-Apr-36	99.10	6.665	1,746.78
FR0101	6.875	15-Apr-29	101.15	6.618	1,722.58
PBS038	6.875	15-Dec-49	100.25	6.855	1,718.05
FR0072	8.250	15-May-36	109.35	6.795	1,543.62
FR0059	7.000	15-May-27	100.55	6.853	1,453.20
FR0106	7.125	15-Aug-40	104.50	6.836	1,024.68
PBS034	6.500	15-Jun-39	97.26	6.810	1,011.52
FR0056	8.375	15-Sep-26	100.48	6.374	997.53

Coupon, Last Price & Yield are in %; Volume is in IDR bn; Rating code: id(Pefindo) & idn (Fitch Indonesia)
Sources: Bloomberg; Indonesia Stock Exchange (Volume)

MOST ACTIVE CORPORATE BONDS

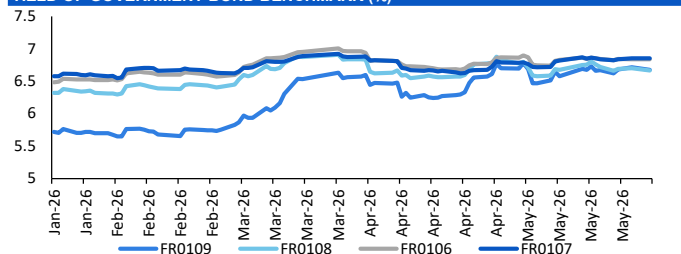
Bond	Rating	Coupon	Maturity	Last Price	Yield	Volume
BBNI01ASLCN1	AAA	6.600	4-Jul-28	100.15	6.52	700.00
MBMA01ACN1	A	7.500	15-Jul-26	100.02	7.50	430.00
SMBRI01CSLCN2	AAA	6.650	26-Jun-28	100.50	6.39	317.95
BBRI01BSOCN1	AAA	6.550	26-Jun-28	101.59	5.73	300.00
WSBP02CB	-	0.000	12-Dec-33	75.00	3.84	290.00
PIDL01CN3	A+	10.250	27-Aug-30	102.24	9.60	270.00
ENRG01ACN3	A+	7.500	31-May-27	100.00	7.50	263.90
SMOPPM02ACN1	A+	10.000	25-Mar-28	102.21	8.67	261.90
WSBP01CB	B	0.000	12-Dec-33	75.00	3.84	260.00
SMPIDL01CN3	A+	10.250	27-Aug-30	102.72	9.46	240.00

SOVEREIGN BOND YIELDS

Country	Tenor	Coupon (%)	MA LTM as of			Spread over UST YC (bps)		
			2-Jun-26	2-Jun-26	2-Jun-26	2-Jun-26	May	Apr
United States	2yr		4.07	4.05	3.89			
USD	5yr		4.15	4.14	4.01			
	10yr		4.43	4.44	4.37			
German	2yr	0.25	2.59	2.53	2.64	-143	-148	-123
EUR	5yr	1.00	2.67	2.64	2.75	-148	-151	-126
	10yr	1.75	2.96	2.94	3.04	-148	-150	-134
Indonesia	2yr	3.50	4.19	4.18	4.20	17	18	32
USD	5yr	3.85	4.72	4.73	4.57	58	59	56
	10yr	6.63	5.48	5.50	5.35	105	106	98
Brazil	2yr	0.00	14.05	13.82	13.71	1,003	982	984
BRL	3yr	0.00	14.15	13.94	13.81	1,013	994	994
	10yr	10.00	14.24	14.12	13.98	1,022	1,012	1,010
Philippines	2yr	6.00	6.22	6.22	5.39	220	221	151
PHP	5yr	7.88	7.47	7.45	6.84	332	331	283
	10yr	11.38	7.46	7.42	6.92	303	298	254
Thailand	2yr	3.13	1.23	1.24	1.24	-279	-276	-264
THB	5yr	3.45	1.68	1.68	1.61	-247	-246	-240
	10yr	3.63	2.25	2.33	2.20	-219	-211	-218
India	2yr	7.59	6.35	6.42	6.26	233	241	239
INR	5yr	7.28	6.81	6.82	6.77	267	268	277
	10yr	8.83	7.00	7.01	7.04	257	257	266
Malaysia	3yr	3.17	3.24	3.24	3.21	-83	-82	-68
MYR	5yr	3.26	3.41	3.41	3.36	-74	-74	-65
	10yr	4.18	3.58	3.58	3.57	-86	-86	-80

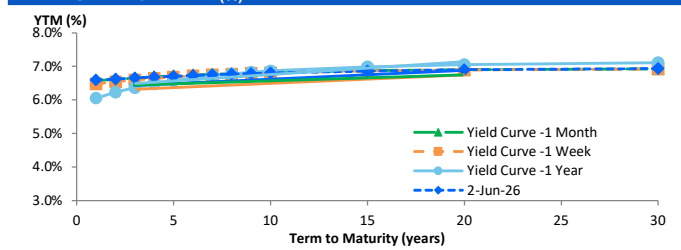
Sources: Bloomberg (Current Yield Curve), US Treasury

YIELD OF GOVERNMENT BOND BENCHMARK (%)



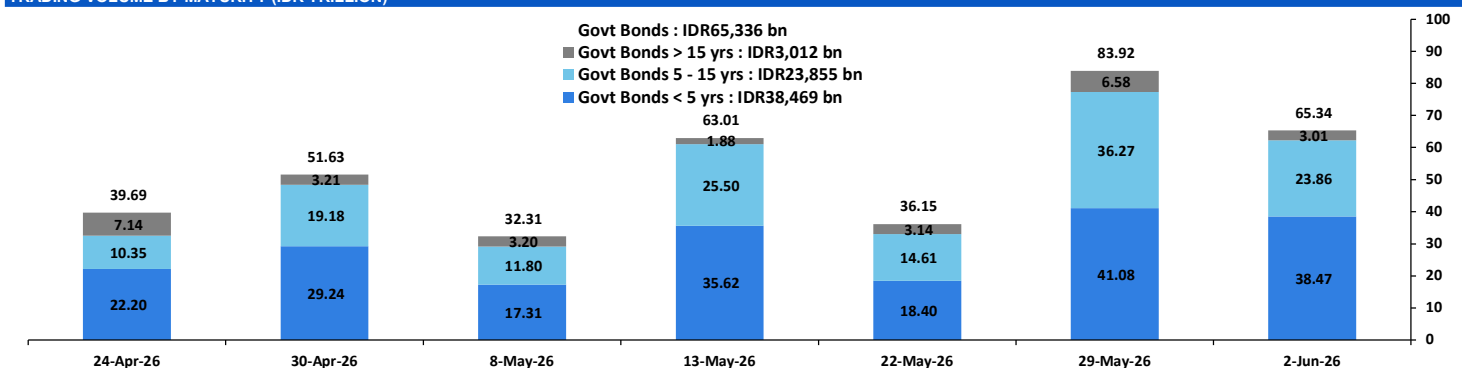
Source: Bloomberg

YIELD CURVE MOVEMENT (%)



Source: Bloomberg

TRADING VOLUME BY MATURITY (IDR TRILLION)



Sources: Indonesia Stock Exchange

CURRENCY

Price	2-Jun-26	-1 Day	-1 Week	-1 Month	EoP2025
DX	99.15	↑	98.94	99.17	98.16
USD/IDR	17,838	↓	17,874	17,789	16,690
EUR/USD	1.16	↓	1.17	1.16	1.17
USD/JPY	159.73	↑	159.27	159.30	157.01
USD/CNY	6.764	↓	6.766	6.786	6.988
USD/MYR	3.965	→	3.965	3.971	4.060
SGD/IDR	13,951	↓	13,992	13,926	12,969

Source: Bloomberg

COMMODITY

Price	2-Jun-26	-1 Day	-1 Week	-1 Month	EoP2025
CPO (Palm Oil)	4,470	↑	4,462	4,429	4,504
Coal	144.50	↓	131.25	132.60	133.90
Gold (XAU/USD)	4,530	↓	4,540	4,508	4,614
Nickel	19,084	↑	18,780	18,829	19,216
Copper	662.95	↑	638.90	636.10	593.20
Brent	93.25	↑	92.05	99.58	108.17
WTI	90.43	↑	87.36	93.89	105.07

PHEI FAIR SPREAD

	1Y	2Y	3Y	4Y	5Y	6Y	7Y	8Y	9Y	10Y
AAA	35	39	41	43	47	50	53	55	56	57
AA+	43	46	48	50	52	55	57	58	59	60
AA	61	66	67	69	72	74	76	78	79	79
AA-	96	105	109	113	116	120	123	125	126	127
A+	144	159	166	172	179	185	189	192	194	195
A	195	216	227	238	249	257	263	267	270	271
A-	245	268	284	301	317	328	336	341	344	345
BBB+	292	316	338	361	382	397	406	412	415	417
BBB	338	361	389	420	446	464	475	481	485	487

*interpolated, as of June 02, 2026 (bps)

Sources: PHEI, Bloomberg

SBN HOLDING - (IDR tn)

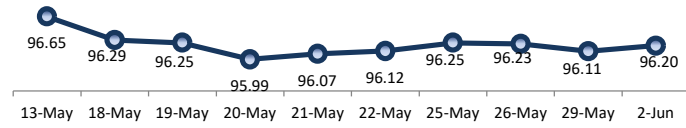
	29-May-2026	WoW	Mtd	YTD
Banks	1,225.0	36.6	1.6	(103.7)
Bank Indonesia (exclude repo)	1,847.8	(33.9)	25.8	206.2
Non-Banks:				
Mutual Fund	254.5	(4.9)	(3.2)	11.5
Insurance & Pension Fund	1,390.4	0.9	19.1	99.7
Foreign Investor	863.2	(1.9)	(3.7)	(15.4)
Individual	552.9	0.1	2.6	15.5
Others	713.2	3.1	2.5	64.3
Total	6,846.9	0.0	44.8	278.1
Domestic Investor	4,135.9	35.9	22.7	87.4
Foreign Investor	863.2	(1.9)	(3.7)	(15.4)
Bank Indonesia (include repo)	1,719.3	(0.5)	10.3	78.7

Source: DJPPR (Processed)

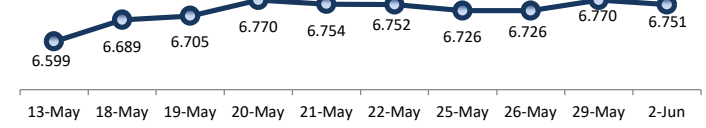
VALUATIONS OF GOVERNMENT BONDS

Bond	Issue Date	Mature Date	Coupon	TTM	Modified Duration	YTM (Change)	Prev Closing Price	Fair Yield Range		Fair Price Range		Last Trade				
												Date	Price	Vol (IDR bn)	Freq	
FR0056	23-Sep-10	15-Sep-26	8.38	0.3	0.28	6.37	↓ -9.3bps	100.52	6.307	6.708	100.43	100.55	2-Jun-26	100.48	997.53	40
FR0090	8-Jul-21	15-Apr-27	5.13	0.9	0.83	6.75	↓ -0.7bps	98.65	6.528	6.929	98.50	98.83	2-Jun-26	98.95	200.65	114
FR0059	15-Sep-11	15-May-27	7.00	1.0	0.90	6.85	↑ 1.4bps	100.13	6.548	6.949	100.04	100.41	2-Jun-26	100.55	1,453.20	56
FR0042	25-Jan-07	15-Jul-27	10.25	1.1	1.01	6.83	↑ 7.4bps	103.59	6.504	6.822	103.62	103.96	25-May-26	103.03	0.02	1
FR0094	4-Mar-22	15-Jan-28	5.60	1.6	1.49	6.10	↑ 2.4bps	99.23	6.059	6.460	98.69	99.29	16-Mar-26	98.95	1.90	1
FR0047	30-Aug-07	15-Feb-28	10.00	1.7	1.52	6.71	↑ 0.2bps	105.18	6.546	6.740	105.15	105.47	2-Jun-26	106.28	0.01	1
FR0064	13-Aug-12	15-May-28	6.13	2.0	1.80	6.66	↓ -1.4bps	99.04	6.502	6.724	98.92	99.31	2-Jun-26	99.40	433.56	50
FR0095	19-Aug-22	15-Aug-28	6.38	2.2	1.99	6.63	↑ 2.3bps	99.47	6.436	6.656	99.42	99.86	2-Jun-26	99.95	170.04	55
FR0099	27-Jan-23	15-Jan-29	6.40	2.6	2.32	6.62	↑ 2.3bps	99.48	6.504	6.602	99.04	99.74	1-Jul-25	99.50	49.05	2
FR0071	12-Sep-13	15-Mar-29	9.00	2.8	2.41	6.62	↓ -2.1bps	105.95	6.522	6.676	105.80	106.20	2-Jun-26	105.94	39.67	4
FR0101	2-Nov-23	15-Apr-29	6.88	2.9	2.55	6.62	↓ -1.1bps	100.65	6.491	6.663	100.53	100.98	2-Jun-26	101.15	1,722.58	78
FR0078	27-Sep-18	15-May-29	8.25	3.0	2.59	6.63	↓ -2.0bps	104.26	6.552	6.686	104.12	104.49	2-Jun-26	104.20	162.77	24
FR0104	22-Aug-24	15-Jul-30	6.50	4.1	3.47	6.70	↓ -5.9bps	99.29	6.637	6.771	99.03	99.50	2-Jun-26	99.70	931.79	113
FR0052	20-Aug-09	15-Aug-30	10.50	4.2	3.36	6.56	↑ 3.7bps	114.22	6.479	6.653	113.89	114.57	2-Jun-26	113.10	0.00	2
FR0082	1-Aug-19	15-Sep-30	7.00	4.3	3.61	6.63	↓ -0.8bps	101.36	6.574	6.718	101.02	101.56	2-Jun-26	100.70	244.02	39
FRSDG001	27-Oct-22	15-Oct-30	7.38	4.4	3.68	6.23	↓ -2.4bps	104.30	6.178	6.384	103.71	104.51	29-May-26	102.28	60.00	1
FR0087	13-Aug-20	15-Feb-31	6.50	4.7	3.92	6.70	↓ -2.4bps	99.18	6.645	6.788	98.84	99.41	2-Jun-26	98.60	736.80	83
FR1019	15-Aug-25	15-Mar-31	5.88	4.8	4.04	6.68	↑ -3.9bps	96.76	6.605	6.779	96.34	97.04	2-Jun-26	98.40	4,388.11	156
FR0085	4-May-20	15-Apr-31	7.75	4.9	4.00	6.57	↑ 1.3bps	104.84	6.497	6.731	104.16	105.15	2-Jun-26	104.00	0.02	2
FR0073	6-Aug-15	15-May-31	8.75	5.0	4.01	6.69	↓ -0.8bps	108.53	6.537	6.731	108.38	109.23	2-Jun-26	107.50	14.87	7
FR0054	22-Jul-10	15-Jul-31	9.50	5.1	3.97	6.71	↑ 1.9bps	111.90	6.590	6.786	111.56	112.46	29-May-26	113.00	0.65	7
FR0091	8-Jul-21	15-Apr-32	6.38	5.9	4.78	6.73	↓ -3.1bps	98.30	6.646	6.822	97.86	98.69	2-Jun-26	98.30	321.86	131
FR0058	21-Jul-11	15-Jun-32	8.25	6.0	4.60	6.77	↑ 2.1bps	107.25	6.543	6.905	106.54	108.40	2-Jun-26	108.90	24.57	6
FR0074	10-Nov-16	15-Aug-32	7.50	6.2	4.83	6.74	↓ -1.1bps	103.76	6.662	6.786	103.55	104.19	2-Jun-26	103.79	2.00	9
FR0096	19-Aug-22	15-Feb-33	7.00	6.7	5.19	6.77	↓ -2.0bps	101.24	6.646	6.830	100.89	101.88	2-Jun-26	100.25	561.39	77
FR0065	30-Aug-12	15-May-33	6.63	7.0	5.47	6.76	↓ -0.3bps	99.27	6.648	6.874	98.64	100.78	2-Jun-26	99.25	126.54	45
FR0100	24-Aug-23	15-Feb-34	6.63	7.7	5.83	6.77	↓ -2.0bps	99.15	6.696	6.840	98.72	99.57	2-Jun-26	99.90	451.37	118
FR0068	1-Aug-13	15-Mar-34	8.38	7.8	5.68	6.78	↓ -4.9bps	109.53	6.712	6.859	109.01	109.94	2-Jun-26	108.60	151.06	34
FR0080	4-Jul-19	15-Jun-35	7.50	9.0	6.35	6.79	↓ -3.5bps	104.72	6.698	6.852	104.31	105.37	2-Jun-26	104.15	464.38	89
FR0103	29-Jul-25	15-Jul-35	6.75	9.1	6.56	6.76	↓ -6.1bps	99.92	6.689	6.891	99.05	100.40	2-Jun-26	100.10	2,154.10	120
FR1018	31-Jul-25	15-Apr-36	6.50	9.9	7.12	6.67	↓ -3.7bps	98.81	6.585	6.853	97.49	99.38	2-Jun-26	99.10	1,746.78	137
FR0072	9-Jul-15	15-May-36	8.25	10.0	6.88	6.80	↓ -3.3bps	110.39	6.730	6.878	109.77	110.89	2-Jun-26	109.35	1,543.62	35
FR0088	7-Jan-21	15-Jun-36	6.25	10.0	7.10	6.68	↓ -6.4bps	96.88	6.587	6.808	95.99	97.55	2-Jun-26	95.75	44.03	50
FR0045	24-May-07	15-May-37	9.75	11.0	7.09	6.89	↑ 1.6bps	121.70	6.790	6.913	121.53	122.60	21-May-26	120.14	0.12	1
FR0093	6-Jan-22	15-Jul-37	6.38	11.1	7.62	6.76	↓ -1.5bps	96.99	6.661	6.800	96.71	97.77	2-Jun-26	98.30	8.04	36
FR0075	10-Aug-17	15-May-38	7.50	12.0	7.90	6.86	↓ -1.1bps	105.14	6.809	6.887	104.93	105.59	2-Jun-26	104.10	27.38	28
FR0098	15-Sep-22	15-Jun-38	7.13	12.0	7.79	6.87	↓ -1.7bps	102.06	6.766	6.900	101.82	102.92	2-Jun-26	102.25	360.39	42
FR0050	24-Jan-08	15-Jul-38	10.50	12.1	7.28	6.83	→ 0.0bps	129.90	6.556	6.957	128.68	132.61	25-May-26	130.40	0.00	2
FR0079	7-Jan-19	15-Apr-39	8.38	12.9	8.05	6.88	↓ -0.9bps	112.66	6.808	6.906	112.38	113.28	2-Jun-26	112.35	351.05	23
FR0083	7-Nov-19	15-Apr-40	7.50	13.9	8.62	6.87	↓ -3.7bps	105.59	6.829	6.909	105.20	105.95	2-Jun-26	104.90	370.90	81
FR1016	9-Jan-25	15-Aug-40	7.13	14.2	8.75	6.84	↓ -0.5bps	102.58	6.768	6.918	101.84	103.21	2-Jun-26	104.50	1,024.68	33
FR0057	21-Apr-11	15-May-41	9.50	15.0	8.65	6.83	↑ 1.0bps	124.80	6.787	6.862	124.41	125.23	14-Apr-26	126.50	5.25	2
FR0062	9-Feb-12	15-Apr-42	6.38	15.9	9.64	6.88	↓ -1.2bps	95.16	6.839	6.907	94.91	95.54	2-Jun-26	97.30	5.04	26
FR0092	8-Jul-21	15-Jun-42	7.13	16.0	9.26	6.86	↓ -0.4bps	102.52	6.771	6.887	102.28	103.43	2-Jun-26	103.95	20.28	55
FR0097	19-Aug-22	15-Jun-43	7.13	17.0	9.58	6.84	↓ -0.8bps	102.81	6.733	6.885	102.38	103.93	2-Jun-26	102.91	87.42	77
FR0067	18-Jul-13	15-Feb-44	8.75	17.7	9.45	6.92	↑ 1.5bps	118.52	6.863	6.970	117.93	119.15	2-Jun-26	118.90	35.00	2
FR1017	9-Jan-25	15-Aug-45	7.13	19.2	10.30	6.85	↓ -0.2bps	102.86	6.742	6.925	102.10	104.07	2-Jun-26	102.85	688.21	30
FR0076	22-Sep-17	15-May-48	7.38	22.0	11.05	6.89	↑ 1.6bps	105.43	6.868	6.968	104.53	105.70	2-Jun-26	103.60	19.91	90
FR0089	7-Jan-21	15-Aug-51	6.88	25.2	11.61	6.95	↑ 0.3bps	99.10	6.895	7.012	98.38	99.75	2-Jun-26	98.00	81.65	212
FR0102	5-Jan-24	15-Jul-54	6.88	28.1	12.01	6.93	↑ 0.7bps	99.31	6.891	7.011	98.33	99.79	2-Jun-26	98.05	282.25	162
FR0105	27-Aug-24	15-Jul-64	6.88	38.1	13.05	6.91	→ 0.0bps	99.52	6.882	7.014	98.16	99.89	14-Apr-25	99.00	0.10	1
ORI024T6	8-Nov-23	15-Oct-29	6.35	3.4	-	6.56	↑ 0.7bps	99.36	6.324	6.690	98.98	100.08	2-Jun-26	100.00	3.92	19
ORI025T6	28-Feb-24	15-Feb-30	6.40	3.7	-	6.57	↑ 8.2bps	99.45	6.283	6.660	99.15	100.39	2-Jun-26	99.90	25.77	20
ORI026T6	30-Oct-24	15-Oct-30	6.40	4.4	-	6.60	↑ 6.4bps	99.26	6.227	6.583	99.31	100.66	2-Jun-26	99.00	0.27	8
PBS003	2-Feb-12	15-Jan-27	6.00	0.6	0.59	6.49	↑ 15.2bps	99.70	6.624	7.024	99.38	99.62	2-Jun-26	99.20	15.52	182
PBS020	22-Oct-18	15-Oct-27	9.00	1.4	1.27	5.11	↓ -3.5bps	105.05	5.731	6.132	103.70	104.23	31-Jul-24	108.25	0.50	1
PBS018	4-Jun-18	15-May-28	7.63	2.0	1.79	5.80	↑ 4.8bps	103.32	6.117	6.518	101.99	102.73	3-Sep-19	99.29	2,000.00	2
PBS030	4-Jun-21	15-Jul-28	5.88	2.1	1.92	6.62	↑ 0.3bps	98.55	6.538	6.810	98.18	98.70	2-Jun-26	98.60	649.85	425
PBSG001	22-Sep-22	15-Sep-29	6.63	3.3	2.87	6.61	↑ 0.5bps	100.03	6.273	6.674	99.84	101.02	29-May-26	99.70	60.00	1
IFR0006	1-Apr-10	15-Mar-30	10.25	3.8	3.12	6.02	↑ 0.1bps	114.08	6.026	6.426	112.65	114.09	11-Mar-26	113.43	2.00	2
PBS023	15-May-19	15-May-30	8.13	4.0	3.37	5.89	↑ 0									

PRICE INDEX



YIELD INDEX



TECHNICAL ANALYSIS

FR0109

INDICATORS	2-Jun-26	-1 Day	Change
Last Price	96.76	96.61	0.14
DI+	16.65	17.30	(0.65)
DI-	37.64	39.12	(1.48)
ADX (15D)	39.55	39.61	(0.06)
A/D	-45,808.74	-50,656.45	4,847.70
CMF(20D)	-0.429	-0.470	0.04
CCI	-27.45	-46.36	18.91
Volume (IDR bn)	4,388.11	3,350.68	1,037.43
Frequency	156	139	17

COMMENT

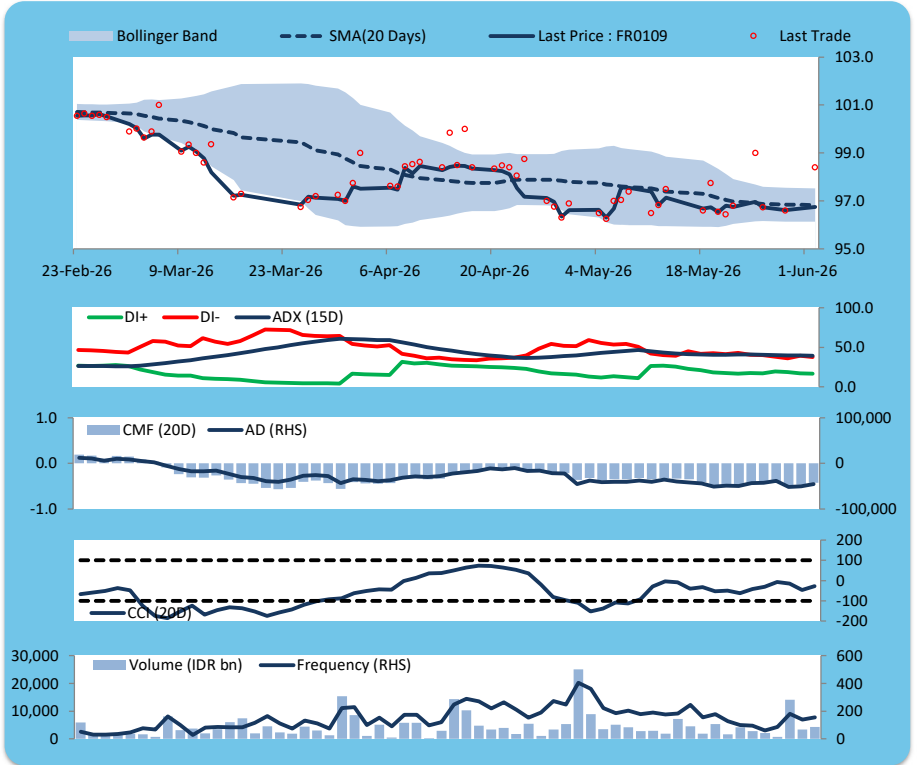
Price increased; heavy trade volume; upward trend continues to strengthen; selling pressure eased; CCI increased.

BUY

FEATURES

Issue Date	14-Aug-25
Mature Date	15-Mar-31
Tenor	4.8
Coupon Rate	5.88
Last Yield	6.68
Modified Duration	4.04
Previous Coupon Date	15-Mar-26
Next Coupon Date	15-Sep-26

Sources: Bloomberg (Price); IDX



FR0108

INDICATORS	2-Jun-26	-1 Day	Change
Last Price	98.80	98.56	0.24
DI+	27.01	29.01	(2.00)
DI-	36.02	37.05	(1.03)
ADX (15D)	20.87	21.33	(0.47)
A/D	4,820.51	1,995.94	2,824.58
CMF(20D)	0.119	0.050	0.07
CCI	31.63	25.40	6.23
Volume (IDR bn)	1,746.78	3,542.99	(1,796.22)
Frequency	137	206	(69)

COMMENT

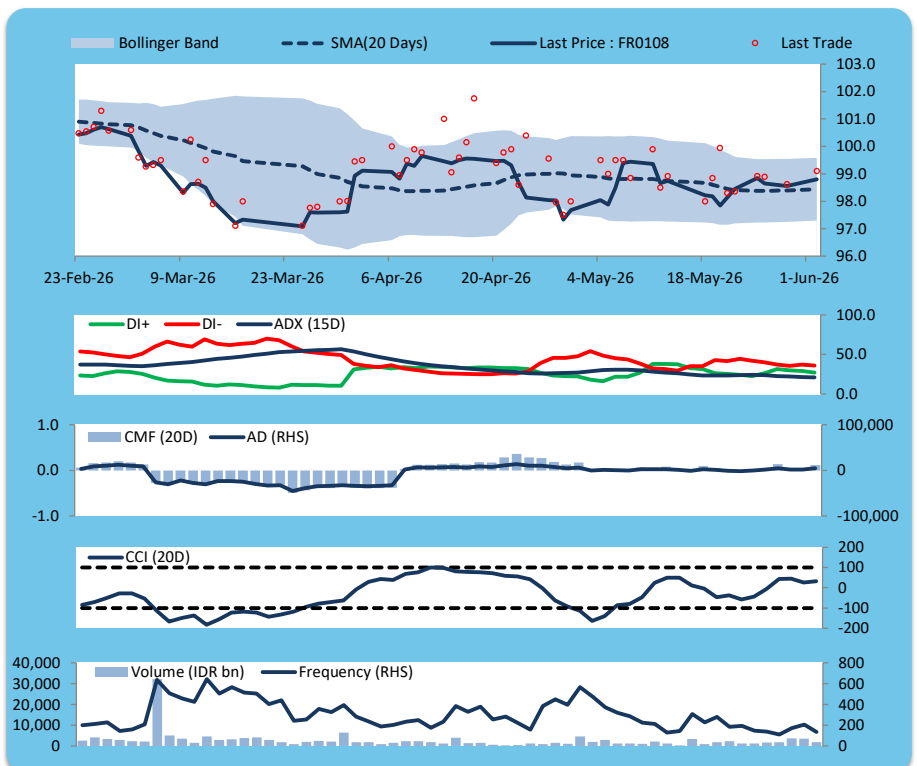
Price increased; heavy trade volume; downward trend continues to weaken; buying pressure increased; CCI increased.

BUY

FEATURES

Issue Date	31-Jul-25
Mature Date	15-Apr-36
Tenor	9.9
Coupon Rate	6.50
Last Yield	6.67
Modified Duration	7.12
Previous Coupon Date	15-Apr-26
Next Coupon Date	15-Oct-26

Sources: Bloomberg (Price); IDX



FR0106

INDICATORS	2-Jun-26	-1 Day	Change
Last Price	102.58	102.54	0.04
DI+	27.83	27.88	(0.05)
DI-	40.28	41.99	(1.71)
ADX (15D)	22.18	22.46	(0.28)
A/D	-4,206.93	-4,874.25	667.32
CMF(20D)	-0.184	-0.217	0.03
CCI	-20.18	-30.50	10.33
Volume (IDR bn)	1,024.68	1,534.10	(509.41)
Frequency	33	77	(44)

COMMENT

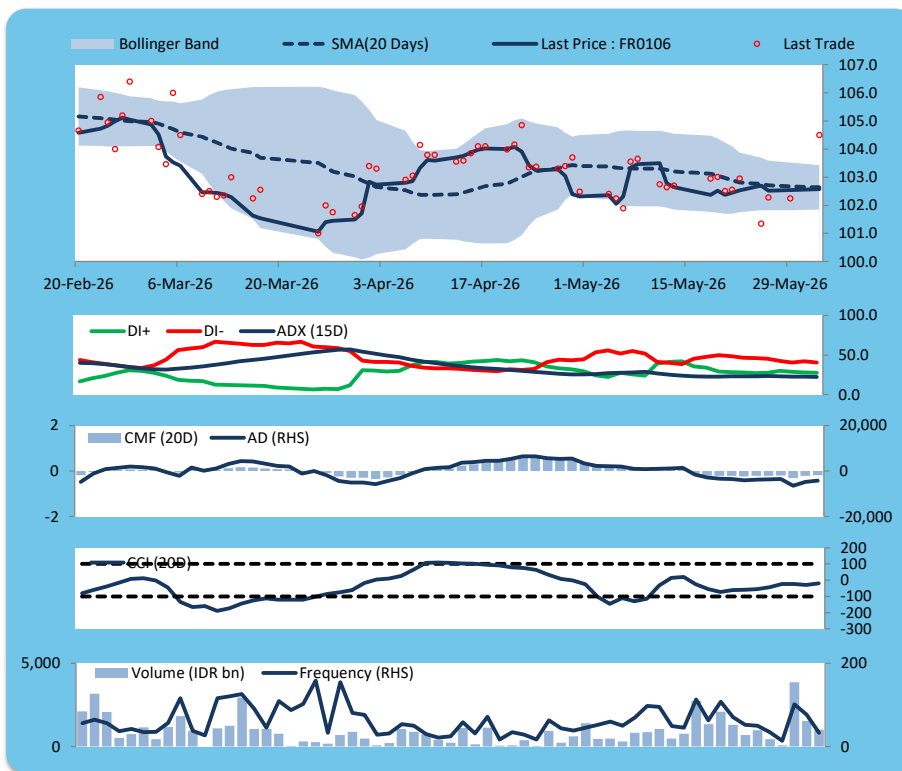
Price increased slightly; heavy trade volume; upward trend continues to weaken; selling pressure eased; CCI increased.

HOLD

FEATURES

Issue Date	9-Jan-25
Mature Date	15-Aug-40
Tenor	14.2
Coupon Rate	7.13
Last Yield	6.84
Modified Duration	8.75
Previous Coupon Date	15-Feb-26
Next Coupon Date	15-Aug-26

Sources: Bloomberg (Price); IDX



FR0107

INDICATORS	2-Jun-26	-1 Day	Change
Last Price	102.85	102.85	(0.00)
DI+	23.07	23.28	(0.21)
DI-	42.81	43.21	(0.40)
ADX (15D)	27.14	26.94	0.20
A/D	-6,037.27	-6,384.49	347.22
CMF(20D)	-0.267	-0.282	0.02
CCI	-70.20	-69.62	(0.58)
Volume (IDR bn)	688.21	881.63	(193.42)
Frequency	30	57	(27)

COMMENT

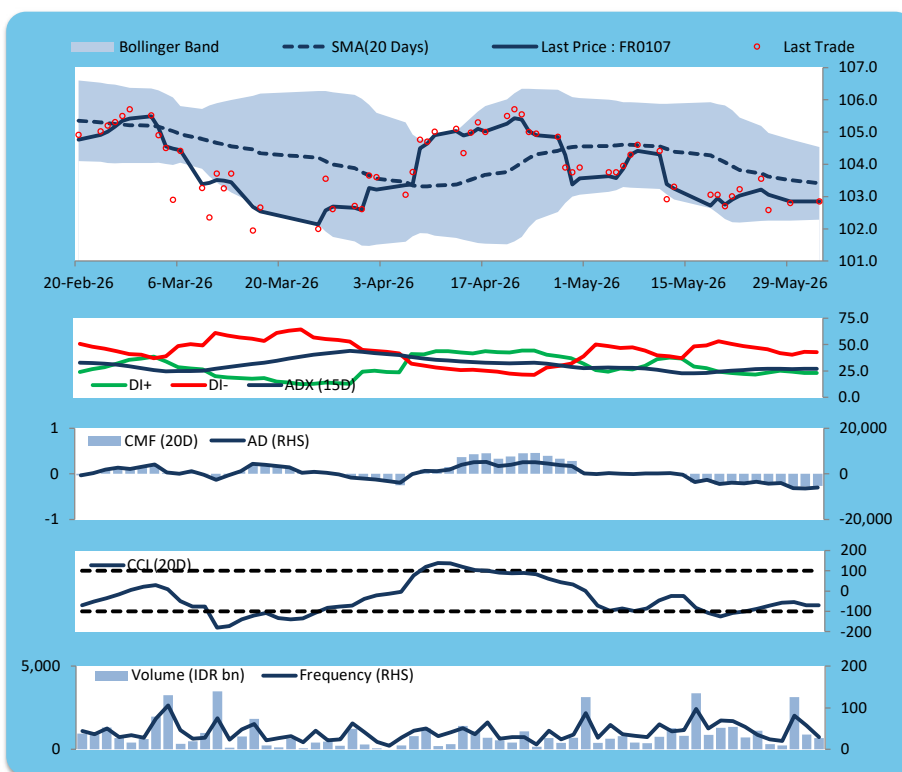
Price declined slightly; moderate trade volume; upward trend continues to strengthen; selling pressure eased; CCI declined.

SELL

FEATURES

Issue Date	9-Jan-25
Mature Date	15-Aug-45
Tenor (year)	19.2
Coupon Rate	7.13
Last Yield	6.85
Modified Duration	10.30
Previous Coupon Date	15-Feb-26
Next Coupon Date	15-Aug-26

Sources: Bloomberg (Price); IDX



ECONOMIC AND FIXED INCOME RESEARCH TEAM**Chief Economist and Head Fixed Income Research**

Helmy Kristanto	helmy.kristanto@brids.co.id	(62-21) 5091 4100 ext. 3400
-----------------	-----------------------------	-----------------------------

Economists

Relindya Yuriswari Salehaningtyas	relindya.salehaningtyas@brids.co.id	(62-21) 5091 4100 ext. 3609
Ebenezer Mesotuhu Harefa	ebenezer.harefa@brids.co.id	(62-21) 5091 4100 ext. 3609

Credit Analyst

Laras Nerpatari Suliyas	laras.nerpatari@brids.co.id	(62-21) 5091 4100 ext. 3403
-------------------------	-----------------------------	-----------------------------

Production & Database Management

Eka Nuraini	ekan@brids.co.id	(62-21) 5091 4100 ext. 3407
Faiqul Kurnia Muslim	faiqul.muslim@brids.co.id	(62-21) 5091 4100 ext. 3402

INSTITUTIONAL DEBT SALES & TRADING TEAM**Head of Debt Capital Market**

Yopi Chandra Wardhani	yopi.wardhani@brids.co.id	(62-21) 5091 4100 ext. 3220
-----------------------	---------------------------	-----------------------------

Debt Sales

Rachmat Eko Putranto	rachmat.putranto@brids.co.id	(62-21) 5091 4100 ext. 3218
Rafi Hutama Soeriaatmadja	rafi.soeriaatmadja@brids.co.id	(62-21) 5091 4100 ext. 3926
Adzkia Zahra	adzkia.zahra@brids.co.id	(62-21) 5091 4100 ext. 3924

Debt Brokerage

Citra Isramij P.	citra.isramij@brids.co.id	(62-21) 5091 4100 ext. 3228
Sisca Emilia	sisca.emilia@brids.co.id	(62-21) 5091 4100 ext. 3921
Deviano Sujitno	deviano.sujitno@brids.co.id	(62-21) 5091 4100 ext. 3925

DISCLAIMER: The information contained in this report has been taken from sources which we deem reliable. However, none of P.T. BRI Danareksa Sekuritas and/or its affiliated companies and/or their respective employees and/or agents makes any representation or warranty (express or implied) or accepts any responsibility or liability as to, or in relation to, the accuracy or completeness of the information and opinions contained in this report or as to any information contained in this report or any other such information or opinions remaining unchanged after the issue thereof. We expressly disclaim any responsibility or liability (express or implied) of P.T. BRI Danareksa Sekuritas, its affiliated companies and their respective employees and agents whatsoever and howsoever arising (including, without limitation for any claims, proceedings, action, suits, losses, expenses, damages or costs) which may be brought against or suffered by any person as a result of acting in reliance upon the whole or any part of the contents of this report and neither P.T. BRI Danareksa Sekuritas, its affiliated companies or their respective employees or agents accepts liability for any errors, omissions or mis-statements, negligent or otherwise, in the report and any liability in respect of the report or any inaccuracy therein or omission therefrom which might otherwise arise is hereby expressly disclaimed. The information contained in this report is not to be taken as any recommendation made by P.T. BRI Danareksa Sekuritas or any other person to enter into any agreement with regard to any investment mentioned in this document. This report is prepared for general circulation. It does not have regard to the specific person who may receive this report. In considering any investments you should make your own independent assessment and seek your own professional financial and legal advice.