

**MOST ACTIVE GOVERNMENT BONDS**

Bond	Coupon	Maturity	Last Price	Yield	Volume (IDR bn)
FR0109	5.875	15-Mar-31	96.45	6.659	2,787.11
PBS038	6.875	15-Dec-49	100.75	6.748	2,424.03
FR0104	6.500	15-Jul-30	99.00	6.743	1,909.23
FR0103	6.750	15-Jul-35	99.20	6.876	1,418.00
FR0108	6.500	15-Apr-36	98.30	6.759	1,285.92
FR0107	7.125	15-Aug-45	103.00	6.850	1,131.29
FR0106	7.125	15-Aug-40	102.55	6.851	989.04
FR0100	6.625	15-Feb-34	98.80	6.851	946.32
FR0056	8.375	15-Sep-26	100.58	6.074	910.01
FR0096	7.000	15-Feb-33	101.20	6.827	820.66

Coupon, Last Price & Yield are in %; Volume is in IDR bn; Rating code: id(Pefindo) & idn (Fitch Indonesia)  
Sources: Bloomberg; Indonesia Stock Exchange (Volume)

**MOST ACTIVE CORPORATE BONDS**

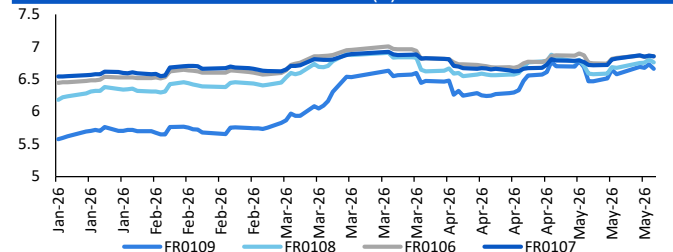
Bond	Rating	Coupon	Maturity	Last Price	Yield	Volume
SISMDR01CN3	A+	8.250	21-May-29	100.00	8.25	590.65
FIFA06BCN4	AAA	6.900	6-Sep-27	101.42	5.75	301.80
SIMORA02ACN2	A+	10.000	16-Jan-27	101.85	9.82	301.00
ADMF06BCN4	AAA	6.700	10-Oct-27	100.40	6.39	290.90
MBMA01BCN3	A	8.250	9-Dec-30	97.45	8.94	265.00
INET01B	A	10.250	5-Feb-29	103.00	8.99	240.00
SMBRIS01ASLCN2	AAA	6.450	6-Jul-26	100.17	6.44	210.00
SIBSDE02BCN2	AA	6.500	17-Dec-35	95.67	7.13	210.00
DART04BCN1	A-	10.500	2-Jul-28	103.80	8.51	208.00
BVIC04CN2	A-	8.250	26-Sep-28	96.88	9.75	201.00

**SOVEREIGN BOND YIELDS**

Country	Tenor	Coupon (%)	21-May-26			Spread over UST YC (bps)		
			21-May-26	MA LTM as of Apr	MA LTM as of Mar	21-May-26	Apr	Mar
United States	2yr		4.12	3.89	3.82			
USD	5yr		4.24	4.01	3.94			
	10yr		4.57	4.37	4.32			
German	2yr	0.25	2.64	2.64	2.62	-141	-123	-118
EUR	5yr	1.00	2.78	2.75	2.73	-146	-126	-122
	10yr	1.75	3.08	3.04	3.00	-150	-134	-132
Indonesia	2yr	3.50	4.22	4.20	4.48	17	32	68
USD	5yr	3.85	4.79	4.57	4.91	55	56	97
	10yr	6.63	5.62	5.35	5.57	104	98	125
Brazil	2yr	0.00	13.82	13.71	13.74	976	984	994
BRL	3yr	0.00	14.10	13.81	13.84	1,004	994	1,004
	10yr	10.00	14.39	13.98	14.02	1,033	1,010	1,022
Philippines	2yr	6.00	6.18	5.29	5.47	212	142	167
PHP	5yr	7.88	7.55	6.84	6.77	332	283	282
	10yr	11.38	7.89	6.92	6.90	331	254	257
Thailand	2yr	3.13	1.29	1.24	1.45	-277	-264	-235
THB	5yr	3.45	1.75	1.61	1.73	-248	-240	-222
	10yr	3.63	2.40	2.20	2.26	-218	-218	-207
India	2yr	7.59	6.60	6.26	6.42	254	239	262
INR	5yr	7.28	6.96	6.77	6.76	272	277	282
	10yr	8.83	7.09	7.04	7.03	252	266	271
Malaysia	3yr	3.17	3.25	3.21	3.28	-87	-68	-54
MYR	5yr	3.26	3.44	3.36	3.44	-80	-65	-50
	10yr	4.18	3.62	3.57	3.64	-96	-80	-68

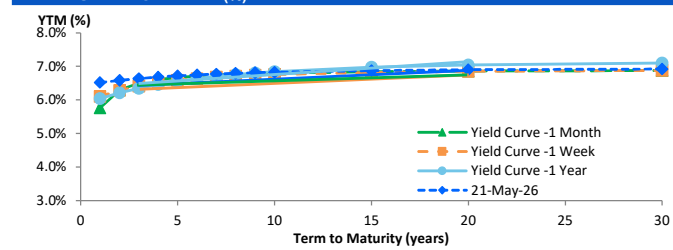
Sources: Bloomberg (Current Yield Curve), US Treasury

**YIELD OF GOVERNMENT BOND BENCHMARK (%)**



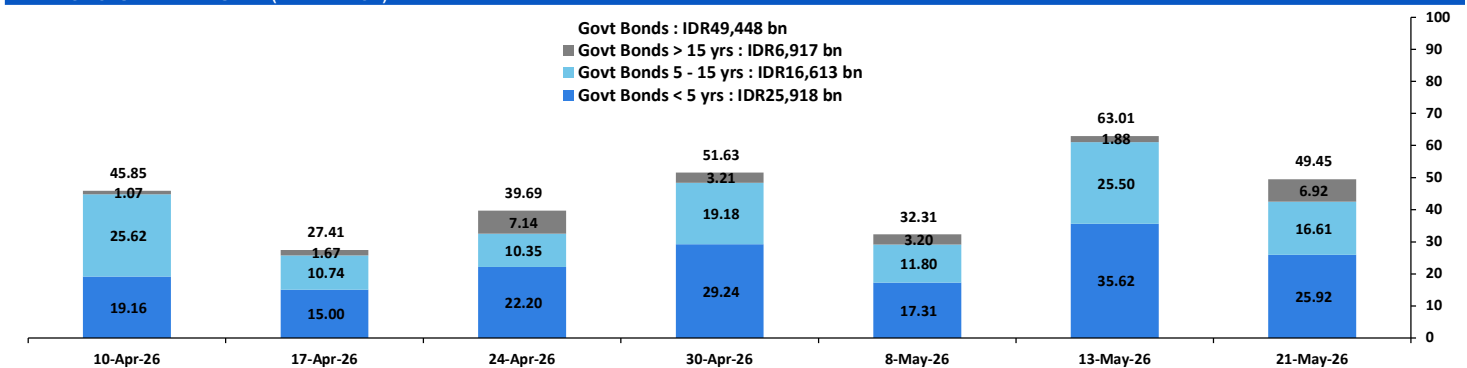
Source: Bloomberg

**YIELD CURVE MOVEMENT (%)**



Source: Bloomberg

**TRADING VOLUME BY MATURITY (IDR TRILLION)**



Sources: Indonesia Stock Exchange

**CURRENCY**

Price	21-May-26	-1 Day	-1 Week	-1 Month	EoP2025
DX	99.14	99.09	98.82	98.39	98.32
USD/IDR	17,654	17,605	17,465	17,144	16,690
EUR/USD	1.16	1.16	1.17	1.17	1.17
USD/JPY	158.95	158.92	158.37	159.37	156.71
USD/CNY	6.798	6.799	6.787	6.827	6.988
USD/MYR	3.962	3.970	3.931	3.951	4.060
SGD/IDR	13,799	13,780	13,766	13,478	12,969

Source: Bloomberg

**COMMODITY**

Price	21-May-26	-1 Day	-1 Week	-1 Month	EoP2025
CPO (Palm Oil)	4,426	4,540	4,350	4,491	3,998
Coal	132.45	132.40	130.40	132.90	107.50
Gold (XAU/USD)	4,541	4,544	4,652	4,720	4,319
Nickel	18,804	18,307	18,718	18,088	16,546
Copper	622.00	629.05	656.75	601.05	568.20
Brent	104.74	105.02	105.72	98.48	60.85
WTI	98.16	98.26	101.17	92.13	57.42

**PHEI FAIR SPREAD**

	1Y	2Y	3Y	4Y	5Y	6Y	7Y	8Y	9Y	10Y
AAA	34	35	37	41	46	50	54	56	58	59
AA+*	46	46	46	49	52	55	57	59	60	61
AA	67	67	68	71	73	76	78	79	80	80
AA-*	103	107	110	116	121	124	127	128	129	130
A+*	150	159	167	177	185	192	196	198	200	200
A	201	216	229	243	256	271	275	277	278	278
A-*	250	269	286	306	323	335	343	348	350	352
BBB+*	296	319	340	364	385	400	410	416	419	421
BBB	342	368	392	420	445	463	474	481	485	487

\*interpolated, as of May 21, 2026 (bps)

Sources: PHEI, Bloomberg

**SBN HOLDING - (IDR tn)**

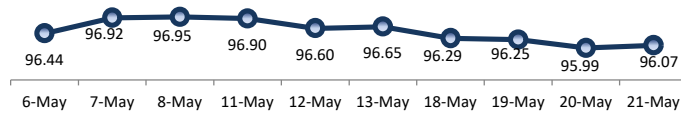
	19-May-2026	WoW	MtD	YTD
Banks	1,165.7	(81.2)	(57.7)	(162.9)
Bank Indonesia (exclude repo)	1,885.0	96.8	63.0	243.4
Non-Banks:				
Mutual Fund	261.6	0.3	4.0	18.6
Insurance & Pension Fund	1,387.8	12.5	16.5	97.1
Foreign Investor	867.3	(1.2)	0.4	(11.4)
Individual	552.9	0.8	2.6	15.5
Others	714.7	1.2	4.0	65.8
<b>Total</b>	<b>6,834.9</b>	<b>29.3</b>	<b>32.8</b>	<b>266.1</b>
Domestic Investor	4,082.6	(66.3)	(30.6)	34.1
Foreign Investor	867.3	(1.2)	0.4	(11.4)
Bank Indonesia (include repo)	1,712.9	4.8	3.9	72.3

Source: DJPPR (Processed)

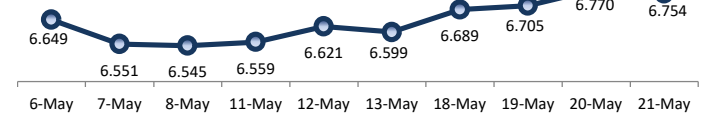
VALUATIONS OF GOVERNMENT BONDS

Bond	Issue Date	Mature Date	Coupon	TTM	Modified Duration	YTM (Change)	Prev Closing Price	Fair Yield Range		Fair Price Range		Last Trade				
												Date	Price	Vol (IDR bn)	Freq	
FR0056	23-Sep-10	15-Sep-26	8.38	0.3	0.31	6.07	↑ 1.7bps	100.66	6.375	6.689	100.49	100.59	21-May-26	100.58	910.01	28
FR0090	8-Jul-21	15-Apr-27	5.13	0.9	0.86	6.54	↑ 4.7bps	98.79	6.491	6.805	98.55	98.82	21-May-26	98.70	203.00	70
FR0059	15-Sep-11	15-May-27	7.00	1.0	0.94	6.55	↓ -1.8bps	100.41	6.515	6.830	100.16	100.45	21-May-26	102.10	158.73	30
FR0042	25-Jan-07	15-Jul-27	10.25	1.2	1.05	6.57	↑ 5.0bps	103.96	6.459	6.749	103.80	104.13	21-May-26	103.04	0.04	1
FR0094	4-Mar-22	15-Jan-28	5.60	1.7	1.52	6.11	↑ 12.0bps	99.21	6.160	6.474	98.64	99.12	16-Mar-26	98.95	1.90	1
FR0047	30-Aug-07	15-Feb-28	10.00	1.7	1.55	6.61	↑ 3.2bps	105.43	6.501	6.664	105.37	105.64	21-May-26	106.40	0.13	4
FR0064	13-Aug-12	15-May-28	6.13	2.0	1.83	6.66	↑ 3.6bps	99.03	6.432	6.662	99.02	99.43	21-May-26	99.80	158.71	57
FR0095	19-Aug-22	15-Aug-28	6.38	2.2	2.02	6.54	↑ 0.2bps	99.65	6.394	6.588	99.55	99.95	21-May-26	99.55	148.97	29
FR0099	27-Jan-23	15-Jan-29	6.40	2.7	2.35	6.55	→ 0.0bps	99.62	6.524	6.838	98.94	99.69	1-Jul-25	99.50	49.05	2
FR0071	12-Sep-13	15-Mar-29	9.00	2.8	2.44	6.58	↓ -5.9bps	106.08	6.474	6.654	105.92	106.39	21-May-26	106.27	68.09	14
FR0101	2-Nov-23	15-Apr-29	6.88	2.9	2.58	6.56	↓ -1.3bps	100.81	6.462	6.631	100.63	101.07	21-May-26	100.60	127.92	34
FR0078	27-Sep-18	15-May-29	8.25	3.0	2.62	6.61	↓ -4.2bps	104.35	6.507	6.664	104.23	104.66	21-May-26	104.60	98.60	11
FR0104	22-Aug-24	15-Jul-30	6.50	4.2	3.50	6.74	↓ -4.8bps	99.12	6.622	6.772	99.02	99.55	21-May-26	99.00	1,909.23	95
FR0052	20-Aug-09	15-Aug-30	10.50	4.2	3.39	6.56	↑ 0.3bps	114.33	6.466	6.710	113.76	114.73	20-May-26	112.84	0.04	2
FR0082	1-Aug-19	15-Sep-30	7.00	4.3	3.64	6.70	↑ 2.1bps	101.11	6.547	6.731	100.98	101.67	21-May-26	100.80	317.63	40
FRSDG001	27-Oct-22	15-Oct-30	7.38	4.4	3.71	6.28	→ 0.0bps	104.13	6.130	6.445	103.51	104.73	4-May-26	102.15	0.30	1
FR0087	13-Aug-20	15-Feb-31	6.50	4.7	3.95	6.78	↓ -2.5bps	98.89	6.630	6.803	98.78	99.47	21-May-26	98.74	358.71	50
<b>FR0109</b>	<b>15-Aug-25</b>	<b>15-Mar-31</b>	<b>5.88</b>	<b>4.8</b>	<b>4.07</b>	<b>6.66</b>	<b>↑ 7.0bps</b>	<b>96.81</b>	<b>6.614</b>	<b>6.794</b>	<b>96.27</b>	<b>96.98</b>	<b>21-May-26</b>	<b>96.45</b>	<b>2,787.11</b>	<b>97</b>
FR0085	4-May-20	15-Apr-31	7.75	4.9	4.02	6.71	↑ 2.5bps	104.27	6.528	6.746	104.12	105.05	21-May-26	103.90	0.03	1
FR0073	6-Aug-15	15-May-31	8.75	5.0	4.04	6.72	↑ 3.1bps	108.48	6.540	6.722	108.47	109.27	21-May-26	108.60	1.07	5
FR0054	22-Jul-10	15-Jul-31	9.50	5.2	4.00	6.70	↓ -4.0bps	111.98	6.593	6.796	111.58	112.51	21-May-26	110.90	6.66	5
FR0091	8-Jul-21	15-Apr-32	6.38	5.9	4.81	6.79	↓ -6.7bps	98.01	6.618	6.858	97.68	98.82	21-May-26	98.09	359.13	70
FR0058	21-Jul-11	15-Jun-32	8.25	6.1	4.63	6.77	↓ -4.7bps	107.26	6.567	6.881	106.69	108.31	21-May-26	106.35	9.53	4
FR0074	10-Nov-16	15-Aug-32	7.50	6.2	4.86	6.78	↓ -3.1bps	103.62	6.652	6.800	103.50	104.26	21-May-26	102.90	34.94	8
FR0096	19-Aug-22	15-Feb-33	7.00	6.7	5.22	6.83	↓ -3.7bps	100.91	6.653	6.846	100.81	101.85	21-May-26	101.20	820.66	51
FR0065	30-Aug-12	15-May-33	6.63	7.0	5.22	6.76	↓ -2.2bps	99.25	6.519	6.834	98.85	100.58	21-May-26	97.25	697.43	71
FR0100	24-Aug-23	15-Feb-34	6.63	7.7	5.86	6.85	↓ -2.3bps	98.65	6.722	6.870	98.53	99.41	21-May-26	98.80	946.32	104
FR0068	1-Aug-13	15-Mar-34	8.38	7.8	5.71	6.84	↓ -6.3bps	109.13	6.739	6.895	108.81	109.80	21-May-26	109.07	117.74	26
FR0080	4-Jul-19	15-Jun-35	7.50	9.1	6.37	6.86	↓ -3.8bps	104.29	6.625	6.879	104.13	105.19	21-May-26	104.20	93.03	48
FR0103	29-Jul-25	15-Jul-35	6.75	9.2	6.58	6.88	↓ -3.4bps	99.14	6.715	6.933	98.76	100.22	21-May-26	99.20	1,418.00	145
<b>FR0108</b>	<b>31-Jul-25</b>	<b>15-Apr-36</b>	<b>6.50</b>	<b>9.9</b>	<b>7.14</b>	<b>6.76</b>	<b>↓ -3.3bps</b>	<b>98.14</b>	<b>6.627</b>	<b>6.912</b>	<b>97.07</b>	<b>99.08</b>	<b>21-May-26</b>	<b>98.30</b>	<b>1,285.92</b>	<b>148</b>
FR0072	9-Jul-15	15-May-36	8.25	10.0	6.90	6.87	↓ -4.2bps	109.86	6.746	6.900	109.62	110.80	21-May-26	109.75	205.63	29
FR0088	7-Jan-21	15-Jun-36	6.25	10.1	7.12	6.80	↑ 2.5bps	96.07	6.604	6.822	95.88	97.42	21-May-26	95.00	13.64	46
FR0045	24-May-07	15-May-37	9.75	11.0	7.12	6.88	↓ -1.2bps	121.82	6.822	6.911	121.60	122.37	21-May-26	120.14	0.12	1
FR0093	6-Jan-22	15-Jul-37	6.38	11.2	7.65	6.78	↑ 1.4bps	96.83	6.681	6.814	96.60	97.61	21-May-26	96.10	26.45	25
FR0075	10-Aug-17	15-May-38	7.50	12.0	7.93	6.87	↑ 0.4bps	105.11	6.803	6.919	104.68	105.65	21-May-26	104.48	39.29	18
FR0098	15-Sep-22	15-Jun-38	7.13	12.1	7.83	6.86	↑ 1.4bps	102.16	6.767	6.909	101.74	102.91	21-May-26	101.50	69.46	22
FR0050	24-Jan-08	15-Jul-38	10.50	12.2	7.31	6.81	→ 0.0bps	130.11	6.558	6.872	129.55	132.65	8-May-26	128.50	1.00	1
FR0079	7-Jan-19	15-Apr-39	8.38	12.9	8.08	6.88	↓ -1.5bps	112.62	6.815	6.932	112.16	113.24	21-May-26	111.05	2.02	11
FR0083	7-Nov-19	15-Apr-40	7.50	13.9	8.65	6.89	↑ 1.6bps	105.42	6.817	6.931	105.02	106.07	21-May-26	105.20	240.72	43
<b>FR0106</b>	<b>9-Jan-25</b>	<b>15-Aug-40</b>	<b>7.13</b>	<b>14.2</b>	<b>8.77</b>	<b>6.85</b>	<b>↓ -0.2bps</b>	<b>102.45</b>	<b>6.761</b>	<b>6.941</b>	<b>101.63</b>	<b>103.28</b>	<b>21-May-26</b>	<b>102.55</b>	<b>989.04</b>	<b>50</b>
FR0057	21-Apr-11	15-May-41	9.50	15.0	8.69	6.81	↑ 0.1bps	125.05	6.785	6.913	123.90	125.29	14-Apr-26	126.50	5.25	2
FR0062	9-Feb-12	15-Apr-42	6.38	15.9	9.67	6.88	↑ 0.1bps	95.16	6.806	6.929	94.71	95.84	21-May-26	98.75	22.97	20
FR0092	8-Jul-21	15-Jun-42	7.13	16.1	9.29	6.87	↑ 2.9bps	102.49	6.748	6.880	102.36	103.65	21-May-26	102.51	78.22	42
FR0097	19-Aug-22	15-Jun-43	7.13	17.1	9.60	6.86	↑ 3.6bps	102.63	6.712	6.863	102.60	104.15	21-May-26	102.15	398.99	70
FR0067	18-Jul-13	15-Feb-44	8.75	17.7	9.60	6.92	↑ 1.2bps	118.55	6.825	6.982	117.81	119.61	20-May-26	118.25	2.08	1
<b>FR0107</b>	<b>9-Jan-25</b>	<b>15-Aug-45</b>	<b>7.13</b>	<b>19.2</b>	<b>10.33</b>	<b>6.85</b>	<b>↓ -1.1bps</b>	<b>102.90</b>	<b>6.676</b>	<b>6.924</b>	<b>102.11</b>	<b>104.81</b>	<b>21-May-26</b>	<b>103.00</b>	<b>1,131.29</b>	<b>35</b>
FR0076	22-Sep-17	15-May-48	7.38	22.0	11.08	6.88	→ 0.0bps	105.58	6.855	6.973	104.49	105.86	21-May-26	105.60	43.22	56
FR0089	7-Jan-21	15-Aug-51	6.88	25.2	11.65	6.94	↑ 0.1bps	99.23	6.857	6.989	98.64	100.20	21-May-26	99.10	41.42	144
FR0102	5-Jan-24	15-Jul-54	6.88	28.2	12.05	6.92	↑ 0.6bps	99.43	6.834	6.985	98.64	100.50	21-May-26	99.46	221.49	120
FR0105	27-Aug-24	15-Jul-64	6.88	38.2	13.11	6.90	↓ -0.3bps	99.72	6.820	6.977	98.63	100.74	14-Apr-25	99.00	0.10	1
ORI024T6	8-Nov-23	15-Oct-29	6.35	3.4	-	6.50	→ 0.0bps	99.54	6.365	6.679	99.00	99.96	21-May-26	99.95	0.54	12
ORI025T6	28-Feb-24	15-Feb-30	6.40	3.7	-	6.47	→ 0.0bps	99.77	6.361	6.676	99.09	100.13	21-May-26	98.45	1.95	17
ORI026T6	30-Oct-24	15-Oct-30	6.40	4.4	-	6.30	↓ -8.2bps	100.40	6.277	6.592	99.27	100.47	21-May-26	99.50	0.90	12
PBS003	2-Feb-12	15-Jan-27	6.00	0.7	0.62	6.10	→ 0.0bps	99.93	6.752	7.066	99.32	99.52	21-May-26	99.85	582.66	82
PBS020	22-Oct-18	15-Oct-27	9.00	1.4	1.31	5.20	↓ -3.7bps	105.03	6.087	6.402	103.42	103.85	31-Jul-24	108.25	0.50	1
PBS018	4-Jun-18	15-May-28	7.63	2.0	1.82	5.88	↓ -10.0bps	103.20	6.305	6.619	101.84	102.42	3-Sep-19	99.29	2,000.00	2
<b>PBS030</b>	<b>4-Jun-21</b>	<b>15-Jul-28</b>	<b>5.88</b>	<b>2.2</b>	<b>1.95</b>	<b>6.65</b>	<b>↑ 19.4bps</b>	<b>98.47</b>	<b>6.492</b>	<b>6.806</b>	<b>98.15</b>	<b>98.77</b>	<b>21-May-26</b>	<b>98.35</b>	<b>90.65</b>	<b>148</b>
PBSG001	22-Sep-22	15-Sep-29	6.63	3.3	2.91	6.37	↑ 4.8bps	100.75	6.317	6.632	99.97	100.90	12-May-26	100.70	50.00	2
IFR0006	1-Apr-10	15-Mar-30	10.25	3.8	3.15	6.05	↓ -0.7bps	114.08	6.172	6.487	112.53	113.67	11-Mar-26	113.43	2.00	2
PBS023	15-May-19	15-May-30	8.13													

PRICE INDEX



YIELD INDEX



TECHNICAL ANALYSIS

FR0109

INDICATORS	21-May-26	-1 Day	Change
Last Price	96.81	96.53	0.28
DI+	17.25	16.99	0.26
DI-	40.80	43.10	(2.30)
ADX (15D)	40.91	40.93	(0.02)
A/D	-43,258.96	-49,855.32	6,596.36
CMF(20D)	-0.437	-0.497	0.06
CCI	-42.76	-60.99	18.23
Volume (IDR bn)	2,787.11	4,158.73	(1,371.63)
Frequency	97	100	(3)

COMMENT

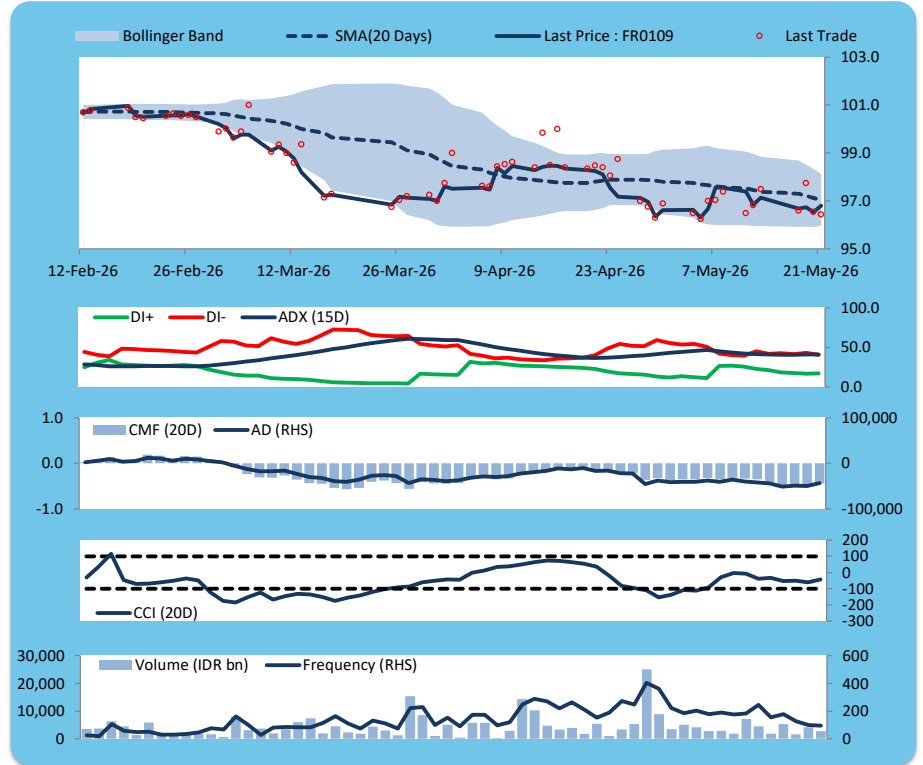
Price increased; heavy trade volume; upward trend continues to strengthen; selling pressure eased; CCI increased.

BUY

FEATURES

Issue Date	14-Aug-25
Mature Date	15-Mar-31
Tenor	4.8
Coupon Rate	5.88
Last Yield	6.66
Modified Duration	4.07
Previous Coupon Date	15-Mar-26
Next Coupon Date	15-Sep-26

Sources: Bloomberg (Price); IDX



FR0108

INDICATORS	21-May-26	-1 Day	Change
Last Price	98.14	97.84	0.30
DI+	22.75	24.09	(1.34)
DI-	42.46	44.23	(1.77)
ADX (15D)	24.24	23.82	0.43
A/D	148.54	-1,454.01	1,602.56
CMF(20D)	0.004	-0.045	0.05
CCI	-45.28	-57.50	12.21
Volume (IDR bn)	1,285.92	1,323.79	(37.87)
Frequency	148	195	(47)

COMMENT

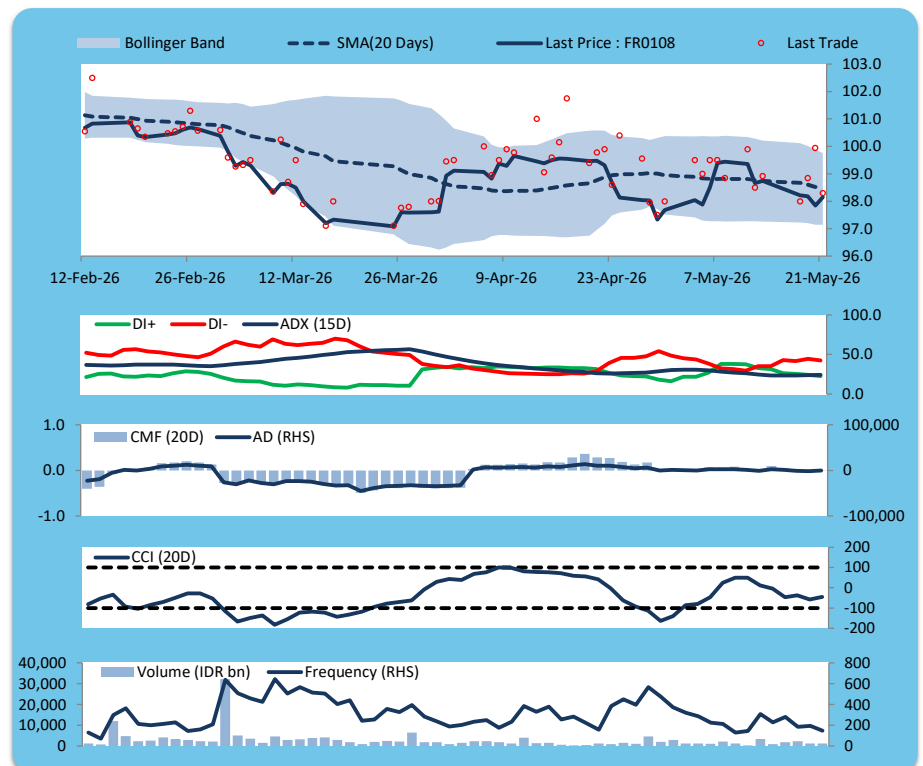
Price increased; heavy trade volume; upward trend continues to weaken; buying pressure increased; CCI increased.

BUY

FEATURES

Issue Date	31-Jul-25
Mature Date	15-Apr-36
Tenor	9.9
Coupon Rate	6.50
Last Yield	6.76
Modified Duration	7.14
Previous Coupon Date	15-Apr-26
Next Coupon Date	15-Oct-26

Sources: Bloomberg (Price); IDX



FR0106

INDICATORS	21-May-26	-1 Day	Change
Last Price	102.45	102.38	0.07
DI+	27.13	27.90	(0.77)
DI-	46.14	46.70	(0.56)
ADX (15D)	23.41	23.23	0.18
A/D	-3,641.39	-4,162.93	521.54
CMF(20D)	-0.201	-0.242	0.04
CCI	-55.58	-59.24	3.67
Volume (IDR bn)	989.04	683.98	305.06
Frequency	50	52	(2)

COMMENT

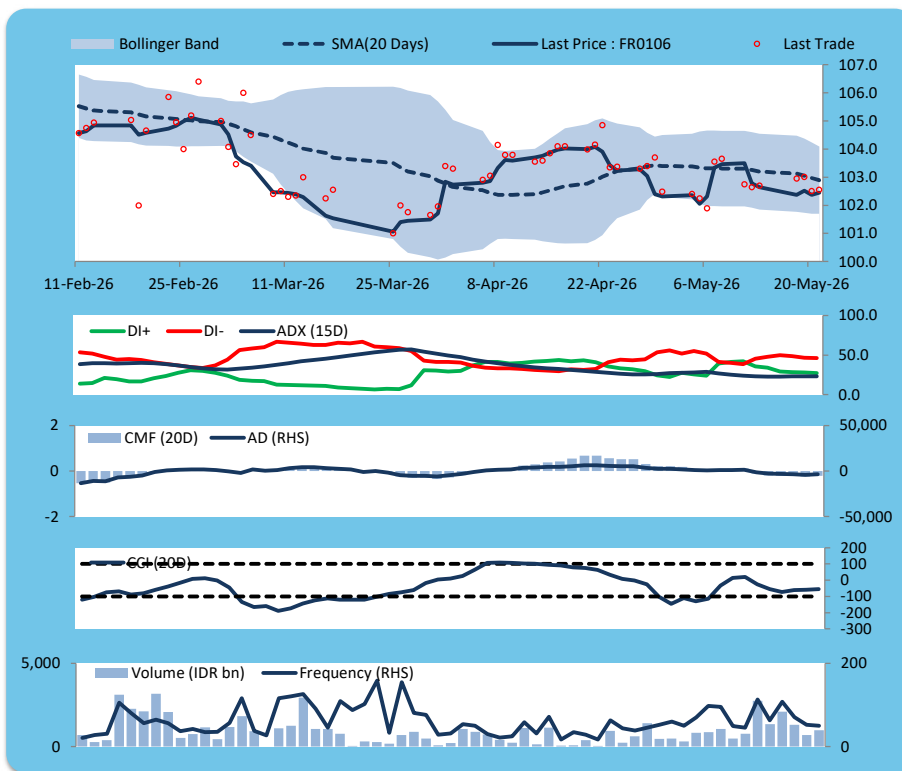
Price increased; heavy trade volume; downward trend continues to strengthen; selling pressure eased; CCI increased.

BUY

FEATURES

Issue Date	9-Jan-25
Mature Date	15-Aug-40
Tenor	14.2
Coupon Rate	7.13
Last Yield	6.85
Modified Duration	8.77
Previous Coupon Date	15-Feb-26
Next Coupon Date	15-Aug-26

Sources: Bloomberg (Price); IDX



FR0107

INDICATORS	21-May-26	-1 Day	Change
Last Price	102.90	102.75	0.15
DI+	21.57	22.30	(0.74)
DI-	47.26	48.64	(1.38)
ADX (15D)	26.70	25.94	0.76
A/D	-3,518.22	-4,237.02	718.80
CMF(20D)	-0.172	-0.215	0.04
CCI	-88.03	-99.56	11.53
Volume (IDR bn)	1,131.29	716.76	414.53
Frequency	35	54	(19)

COMMENT

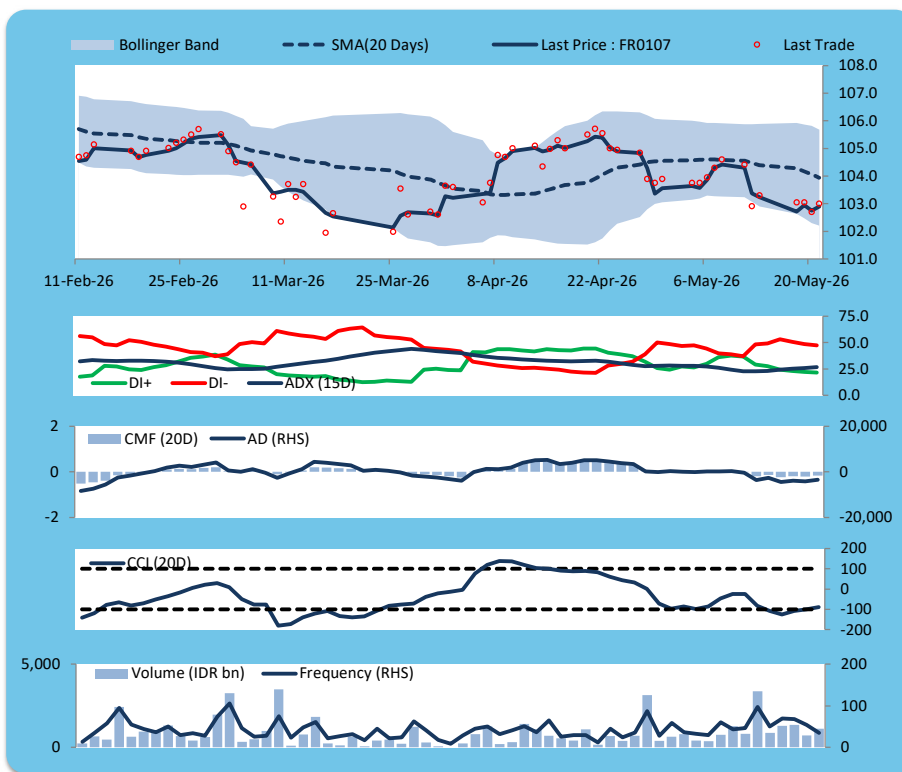
Price increased; heavy trade volume; upward trend continues to strengthen; selling pressure eased; CCI increased.

BUY

FEATURES

Issue Date	9-Jan-25
Mature Date	15-Aug-45
Tenor (year)	19.2
Coupon Rate	7.13
Last Yield	6.85
Modified Duration	10.33
Previous Coupon Date	15-Feb-26
Next Coupon Date	15-Aug-26

Sources: Bloomberg (Price); IDX



**ECONOMIC AND FIXED INCOME RESEARCH TEAM****Chief Economist and Head Fixed Income Research**

Helmy Kristanto	helmy.kristanto@brids.co.id	(62-21) 5091 4100 ext. 3400
-----------------	-----------------------------	-----------------------------

**Economists**

Relindya Yuriswari Salehaningtyas	relindya.salehaningtyas@brids.co.id	(62-21) 5091 4100 ext. 3609
Ebenezer Mesotuhu Harefa	ebenezer.harefa@brids.co.id	(62-21) 5091 4100 ext. 3609

**Credit Analyst**

Laras Nerpatari Suliyas	laras.nerpatari@brids.co.id	(62-21) 5091 4100 ext. 3403
-------------------------	-----------------------------	-----------------------------

**Production & Database Management**

Eka Nuraini	ekan@brids.co.id	(62-21) 5091 4100 ext. 3407
Faiqul Kurnia Muslim	faiqul.muslim@brids.co.id	(62-21) 5091 4100 ext. 3402

**INSTITUTIONAL DEBT SALES & TRADING TEAM****Head of Debt Capital Market**

Yopi Chandra Wardhani	yopi.wardhani@brids.co.id	(62-21) 5091 4100 ext. 3220
-----------------------	---------------------------	-----------------------------

**Debt Sales**

Rachmat Eko Putranto	rachmat.putranto@brids.co.id	(62-21) 5091 4100 ext. 3218
Rafi Hutama Soeriaatmadja	rafi.soeriaatmadja@brids.co.id	(62-21) 5091 4100 ext. 3926
Adzkia Zahra	adzkia.zahra@brids.co.id	(62-21) 5091 4100 ext. 3924

**Debt Brokerage**

Citra Isramij P.	citra.isramij@brids.co.id	(62-21) 5091 4100 ext. 3228
Sisca Emilia	sisca.emilia@brids.co.id	(62-21) 5091 4100 ext. 3921
Deviano Sujitno	deviano.sujitno@brids.co.id	(62-21) 5091 4100 ext. 3925

**DISCLAIMER:** The information contained in this report has been taken from sources which we deem reliable. However, none of P.T. BRI Danareksa Sekuritas and/or its affiliated companies and/or their respective employees and/or agents makes any representation or warranty (express or implied) or accepts any responsibility or liability as to, or in relation to, the accuracy or completeness of the information and opinions contained in this report or as to any information contained in this report or any other such information or opinions remaining unchanged after the issue thereof. We expressly disclaim any responsibility or liability (express or implied) of P.T. BRI Danareksa Sekuritas, its affiliated companies and their respective employees and agents whatsoever and howsoever arising (including, without limitation for any claims, proceedings, action, suits, losses, expenses, damages or costs) which may be brought against or suffered by any person as a result of acting in reliance upon the whole or any part of the contents of this report and neither P.T. BRI Danareksa Sekuritas, its affiliated companies or their respective employees or agents accepts liability for any errors, omissions or mis-statements, negligent or otherwise, in the report and any liability in respect of the report or any inaccuracy therein or omission therefrom which might otherwise arise is hereby expressly disclaimed. The information contained in this report is not to be taken as any recommendation made by P.T. BRI Danareksa Sekuritas or any other person to enter into any agreement with regard to any investment mentioned in this document. This report is prepared for general circulation. It does not have regard to the specific person who may receive this report. In considering any investments you should make your own independent assessment and seek your own professional financial and legal advice.