

MOST ACTIVE GOVERNMENT BONDS

Bond	Coupon	Maturity	Last Price	Yield	Volume (IDR bn)
FR0109	5.875	15-Mar-31	97.05	6.492	2,935.24
FR0103	6.750	15-Jul-35	101.05	6.651	2,591.78
PBS003	6.000	15-Jan-27	100.00	5.980	2,142.78
FR0108	6.500	15-Apr-36	99.50	6.617	2,140.21
FR0090	5.125	15-Apr-27	100.00	6.150	1,721.18
FR0104	6.500	15-Jul-30	100.00	6.466	1,581.38
PBS032	4.875	15-Jul-26	100.25	5.271	1,433.40
PBS005	6.750	15-Apr-43	101.61	6.615	1,240.00
FR0072	8.250	15-May-36	111.45	6.716	1,193.69
FR0096	7.000	15-Feb-33	101.95	6.597	1,169.72

Coupon, Last Price & Yield are in %; Volume is in IDR bn; Rating code: id(Pefindo) & idn (Fitch Indonesia)
Sources: Bloomberg; Indonesia Stock Exchange (Volume)

MOST ACTIVE CORPORATE BONDS

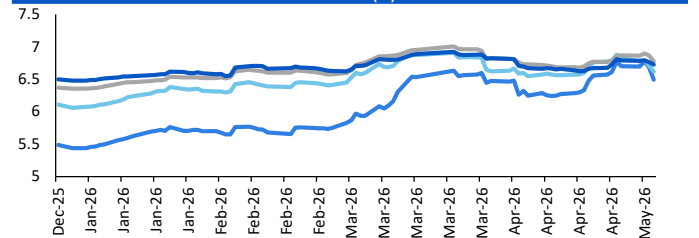
Bond	Rating	Coupon	Maturity	Last Price	Yield	Volume
BTPN05ACN3	AAA	6.100	2-Sep-28	102.32	5.03	300.00
SIBALI01BCN3	A	7.250	5-Dec-28	96.21	8.91	300.00
SWCARE01B	A-	10.750	9-Jul-28	103.01	9.20	255.00
SMLPPI01CN1	A	11.000	4-Oct-29	106.19	8.87	240.00
BBRI01BSOCN2	AAA	5.700	17-Mar-29	101.67	5.07	200.00
INKP04CCN2	A+	10.750	25-Aug-28	108.52	6.72	180.00
SMPPGD01BSOCN3AAA	AAA	5.500	13-Nov-28	98.62	6.10	166.35
LPP102BCN1	A	11.000	4-Jul-28	105.52	8.18	153.00
SMINKP04BCN1	A+	10.750	4-Oct-29	107.51	8.20	150.00
SMINKP04CCN2	A+	10.750	5-Dec-29	105.72	8.86	150.00

SOVEREIGN BOND YIELDS

Country	Tenor	Coupon (%)	Spread over UST YC (bps)		
			7-May-26	MA LTM as of Apr	MA LTM as of Mar
United States	2yr		3.87	3.89	3.82
USD	5yr		3.98	4.01	3.94
	10yr		4.34	4.37	4.32
German	2yr	0.25	2.56	2.64	2.62
EUR	5yr	1.00	2.69	2.75	2.73
	10yr	1.75	2.99	3.04	3.00
Indonesia	2yr	3.50	4.12	4.20	4.48
USD	5yr	3.85	4.49	4.57	4.91
	10yr	6.63	5.26	5.35	5.57
Brazil	2yr	0.00	13.75	13.71	13.74
BRL	3yr	0.00	13.65	13.81	13.84
	10yr	10.00	13.94	13.98	14.02
Philippines	2yr	6.00	5.68	5.39	5.17
PHP	5yr	7.88	7.55	6.84	6.77
	10yr	11.38	7.55	7.05	7.08
Thailand	2yr	3.13	1.22	1.24	1.45
THB	5yr	3.45	1.56	1.61	1.73
	10yr	3.63	2.19	2.20	2.26
India	2yr	7.59	6.16	6.26	6.42
INR	5yr	7.28	6.64	6.77	6.76
	10yr	8.83	6.92	7.04	7.03
Malaysia	3yr	3.17	3.20	3.21	3.28
MYR	5yr	3.26	3.35	3.36	3.44
	10yr	4.18	3.57	3.57	3.64

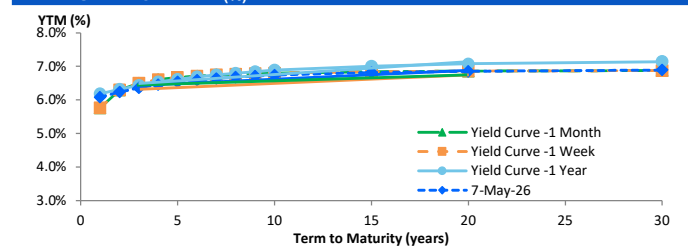
Sources: Bloomberg (Current Yield Curve), US Treasury

YIELD OF GOVERNMENT BOND BENCHMARK (%)



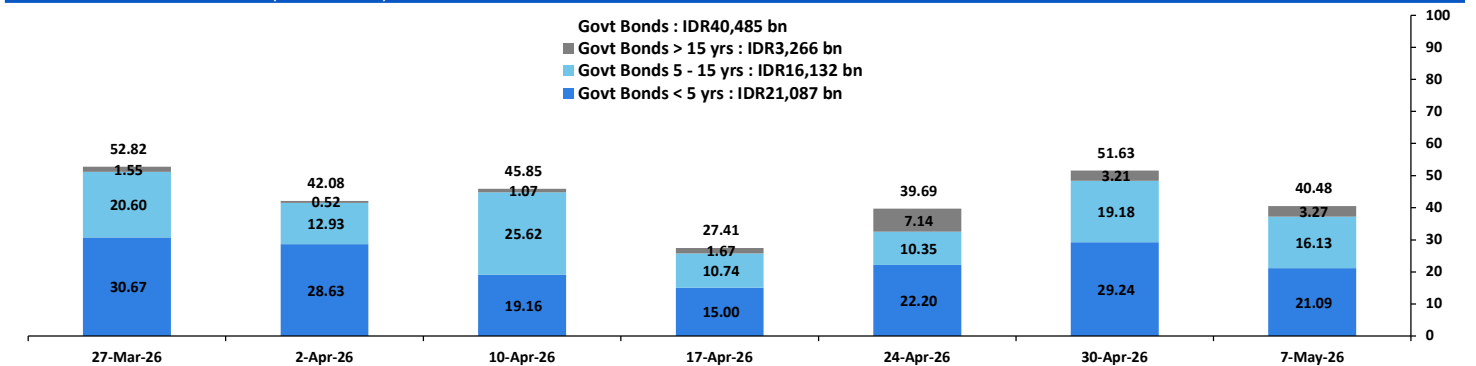
Source: Bloomberg

YIELD CURVE MOVEMENT (%)



Source: Bloomberg

TRADING VOLUME BY MATURITY (IDR TRILLION)



Sources: Indonesia Stock Exchange

CURRENCY

Price	7-May-26	-1 Day	-1 Week	-1 Month	EoP2025
DXY	97.88	↓	98.02	98.06	99.86
USD/IDR	17,342	↓	17,389	17,353	17,095
EUR/USD	1.18	↑	1.17	1.17	1.16
USD/JPY	156.39	→	156.39	156.59	159.62
USD/CNY	6.802	↓	6.813	6.828	6.863
USD/MYR	3.909	↓	3.923	3.972	4.030
SGD/IDR	13,692	↓	13,700	13,557	13,317

Source: Bloomberg

COMMODITY

Price	7-May-26	-1 Day	-1 Week	-1 Month	EoP2025
CPO (Palm Oil)	4,485	↓	4,642	4,504	4,691
Coal	132.05	↓	134.40	134.00	138.50
Gold (XAU/USD)	4,737	↑	4,691	4,618	4,707
Nickel	19,029	↓	19,216	19,319	16,768
Copper	616.80	↑	613.65	592.60	556.30
Brent	99.07	↓	101.27	114.01	109.27
WTI	92.89	↓	95.08	105.07	112.95

PHEI FAIR SPREAD

	1Y	2Y	3Y	4Y	5Y	6Y	7Y	8Y	9Y	10Y
AAA	37	42	43	46	50	55	59	62	64	66
AA+	43	47	47	49	52	55	58	61	63	64
AA	63	65	66	67	70	72	75	77	78	79
AA-	104	108	109	112	115	118	121	122	123	124
A+	159	167	170	175	180	184	187	189	190	191
A	215	229	235	243	252	258	262	265	267	267
A-	262	284	295	308	320	329	335	339	341	343
BBB+	302	332	350	368	384	396	405	411	414	416
BBB	337	378	403	426	446	462	473	481	485	488

*interpolated, as of May 07, 2026 (bps)

Sources: PHEI, Bloomberg

SBN HOLDING - (IDR tn)

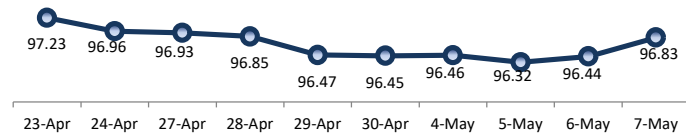
	05-May-2026	WoW	Mtd	YTD
Banks	1,211.7	(87.5)	(11.8)	(117.0)
Bank Indonesia (exclude repo)	1,824.7	98.2	2.7	183.0
Non-Banks:				
Mutual Fund	259.9	1.7	2.3	17.0
Insurance & Pension Fund	1,371.8	12.7	0.5	81.1
Foreign Investor	867.8	7.7	0.9	(10.8)
Individual	551.1	1.3	0.8	13.7
Others	711.2	1.9	0.5	62.3
Total	6,798.1	36.0	(4.0)	229.3
Domestic Investor	4,105.6	(69.9)	(7.6)	57.1
Foreign Investor	867.8	7.7	0.9	(10.8)
Bank Indonesia (include repo)	1,707.4	5.5	(1.6)	66.8

Source: DJPPR (Processed)

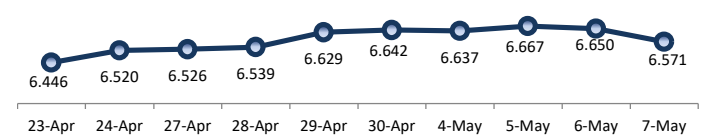
VALUATIONS OF GOVERNMENT BONDS

Bond	Issue Date	Mature Date	Coupon	TTM	Modified Duration	YTM (Change)	Prev Closing Price	Fair Yield Range		Fair Price Range		Last Trade				
												Date	Price	Vol (IDR bn)	Freq	
FR0056	23-Sep-10	15-Sep-26	8.38	0.4	0.35	5.59	↓ -1.3bps	100.92	5.690	6.511	100.62	100.91	7-May-26	100.85	393.63	21
FR0090	8-Jul-21	15-Apr-27	5.13	0.9	0.90	6.15	↓ -10.7bps	99.08	5.852	6.562	98.71	99.34	7-May-26	100.00	1,721.18	96
FR0059	15-Sep-11	15-May-27	7.00	1.0	0.94	6.20	↓ -8.7bps	100.78	5.946	6.555	100.43	101.03	7-May-26	100.70	46.68	23
FR0042	25-Jan-07	15-Jul-27	10.25	1.2	1.09	6.23	↑ 7.1bps	104.49	6.136	6.331	104.41	104.64	7-May-26	104.00	69.09	2
FR0094	4-Mar-22	15-Jan-28	5.60	1.7	1.56	5.95	↓ -4.9bps	99.44	5.697	6.334	98.83	99.84	16-Mar-26	98.95	1.90	1
FR0047	30-Aug-07	15-Feb-28	10.00	1.8	1.59	6.32	↑ 0.6bps	106.05	6.144	6.348	106.02	106.38	6-May-26	106.90	12.10	2
FR0064	13-Aug-12	15-May-28	6.13	2.0	1.82	6.22	↓ -12.0bps	99.83	6.121	6.277	99.71	100.01	7-May-26	99.90	267.10	17
FR0095	19-Aug-22	15-Aug-28	6.38	2.3	2.06	6.20	↓ -8.1bps	100.36	6.084	6.278	100.19	100.60	7-May-26	100.40	98.43	9
FR0099	27-Jan-23	15-Jan-29	6.40	2.7	2.39	6.46	↓ -2.3bps	99.84	6.191	6.867	98.86	100.50	1-Jul-25	99.50	49.05	2
FR0071	12-Sep-13	15-Mar-29	9.00	2.9	2.48	6.32	↓ -13.5bps	106.86	6.210	6.328	106.87	107.19	7-May-26	106.00	170.67	9
FR0101	2-Nov-23	15-Apr-29	6.88	2.9	2.62	6.30	↓ -15.1bps	101.52	6.203	6.345	101.40	101.78	7-May-26	101.50	550.72	43
FR0078	27-Sep-18	15-May-29	8.25	3.0	2.56	6.35	↓ -11.6bps	105.14	6.242	6.361	105.12	105.45	7-May-26	105.21	990.64	25
FR0104	22-Aug-24	15-Jul-30	6.50	4.2	3.55	6.47	↓ -22.3bps	100.11	6.394	6.536	99.86	100.37	7-May-26	100.00	1,581.38	80
FR0052	20-Aug-09	15-Aug-30	10.50	4.3	3.43	6.47	↓ -4.2bps	114.80	6.274	6.613	114.25	115.62	6-May-26	112.86	0.03	1
FR0082	1-Aug-19	15-Sep-30	7.00	4.4	3.68	6.60	↓ -6.4bps	101.49	6.340	6.558	101.64	102.47	7-May-26	102.20	306.05	27
FRSDG001	27-Oct-22	15-Oct-30	7.38	4.4	3.74	6.66	↓ -2.2bps	102.72	5.570	6.391	103.74	107.01	4-May-26	102.15	0.30	1
FR0087	13-Aug-20	15-Feb-31	6.50	4.8	3.99	6.52	↓ -20.6bps	99.89	6.400	6.607	99.55	100.39	7-May-26	100.30	463.33	67
FR0109	15-Aug-25	15-Mar-31	5.88	4.9	4.12	6.49	↑ 22.2bps	97.46	6.344	6.637	96.87	98.06	7-May-26	97.05	2,935.24	190
FR0085	4-May-20	15-Apr-31	7.75	4.9	4.07	6.52	↓ -2.9bps	105.10	6.344	6.676	104.45	105.88	7-May-26	106.80	1.21	2
FR0073	6-Aug-15	15-May-31	8.75	5.0	3.93	6.43	↓ -20.2bps	109.82	6.329	6.519	109.42	110.28	7-May-26	109.25	2.35	8
FR0054	22-Jul-10	15-Jul-31	9.50	5.2	4.04	6.71	↓ -1.9bps	112.03	6.443	6.696	112.11	113.29	7-May-26	114.00	20.50	3
FR0091	8-Jul-21	15-Apr-32	6.38	5.9	4.85	6.65	↓ -11.6bps	98.65	6.437	6.695	98.45	99.69	7-May-26	99.50	922.21	92
FR0058	21-Jul-11	15-Jun-32	8.25	6.1	4.66	6.81	↑ 3.9bps	107.06	6.400	6.759	107.35	109.22	6-May-26	107.31	5.02	4
FR0074	10-Nov-16	15-Aug-32	7.50	6.3	4.91	6.63	↓ -8.6bps	104.40	6.519	6.648	104.30	104.97	7-May-26	104.55	0.26	3
FR0096	19-Aug-22	15-Feb-33	7.00	6.8	5.27	6.60	↓ -20.5bps	102.16	6.559	6.654	101.85	102.37	7-May-26	101.95	1,169.72	49
FR0065	30-Aug-12	15-May-33	6.63	7.0	5.37	6.68	↑ 16.0bps	99.69	6.356	6.833	98.85	101.50	7-May-26	101.40	369.89	40
FR0100	24-Aug-23	15-Feb-34	6.63	7.8	5.91	6.66	↓ -12.7bps	99.76	6.606	6.750	99.24	100.10	7-May-26	101.00	682.73	84
FR0068	1-Aug-13	15-Mar-34	8.38	7.9	5.76	6.67	↓ -12.2bps	110.28	6.655	6.776	109.61	110.38	7-May-26	110.49	367.08	16
FR0080	4-Jul-19	15-Jun-35	7.50	9.1	6.43	6.71	↓ -7.6bps	105.31	6.662	6.773	104.87	105.64	7-May-26	105.73	488.10	44
FR0103	29-Jul-25	15-Jul-35	6.75	9.2	6.64	6.65	↓ -13.1bps	100.66	6.628	6.834	99.42	100.82	7-May-26	101.05	2,591.78	108
FR0108	31-Jul-25	15-Apr-36	6.50	9.9	7.20	6.62	↓ -11.8bps	99.15	6.539	6.843	97.55	99.71	7-May-26	99.50	2,140.21	213
FR0072	9-Jul-15	15-May-36	8.25	10.0	6.71	6.72	↓ -9.9bps	111.05	6.669	6.806	110.37	111.42	7-May-26	111.45	1,193.69	19
FR0088	7-Jan-21	15-Jun-36	6.25	10.1	7.19	6.58	↓ -14.3bps	97.57	6.559	6.749	96.38	97.74	7-May-26	99.90	50.32	45
FR0045	24-May-07	15-May-37	9.75	11.0	6.90	6.82	↓ -0.3bps	122.45	6.663	7.037	120.56	123.83	20-Apr-26	124.50	1.20	1
FR0093	6-Jan-22	15-Jul-37	6.38	11.2	7.71	6.66	↓ -9.9bps	97.80	6.630	6.754	97.05	97.99	7-May-26	99.45	16.72	54
FR0075	10-Aug-17	15-May-38	7.50	12.0	7.71	6.79	↓ -8.7bps	105.73	6.724	6.875	105.05	106.32	7-May-26	106.04	83.17	16
FR0098	15-Sep-22	15-Jun-38	7.13	12.1	7.88	6.76	↓ -11.9bps	102.96	6.704	6.861	102.14	103.44	7-May-26	103.40	319.54	39
FR0050	24-Jan-08	15-Jul-38	10.50	12.2	7.35	6.83	↓ -0.9bps	130.04	6.338	6.802	130.29	134.96	5-May-26	129.14	33.80	2
FR0079	7-Jan-19	15-Apr-39	8.38	12.9	8.14	6.80	↓ -5.9bps	113.37	6.744	6.899	112.49	113.93	7-May-26	112.30	18.12	9
FR0083	7-Nov-19	15-Apr-40	7.50	13.9	8.70	6.83	↓ -4.6bps	105.94	6.738	6.907	105.25	106.81	7-May-26	106.00	23.97	36
FR0106	9-Jan-25	15-Aug-40	7.13	14.3	8.83	6.77	↓ -10.2bps	103.17	6.663	6.916	101.87	104.20	7-May-26	103.55	1,058.89	96
FR0057	21-Apr-11	15-May-41	9.50	15.0	8.41	6.81	↑ 1.8bps	125.07	6.780	6.885	124.24	125.38	14-Apr-26	126.50	5.25	2
FR0062	9-Feb-12	15-Apr-42	6.38	15.9	9.72	6.84	↑ 0.6bps	95.51	6.735	6.907	94.90	96.50	7-May-26	99.00	23.76	43
FR0092	8-Jul-21	15-Jun-42	7.13	16.1	9.36	6.79	↓ -2.7bps	103.27	6.698	6.843	102.72	104.16	7-May-26	103.40	76.52	29
FR0097	19-Aug-22	15-Jun-43	7.13	17.1	9.69	6.74	↓ -1.8bps	103.90	6.669	6.815	103.09	104.60	7-May-26	103.45	80.59	37
FR0067	18-Jul-13	15-Feb-44	8.75	17.8	9.55	6.85	↓ -3.6bps	119.37	6.749	6.959	118.09	120.52	7-May-26	119.54	45.00	3
FR0107	9-Jan-25	15-Aug-45	7.13	19.3	10.43	6.72	↓ -4.2bps	104.29	6.593	6.866	102.73	105.74	7-May-26	104.30	755.29	60
FR0076	22-Sep-17	15-May-48	7.38	22.0	10.76	6.86	↓ -1.9bps	105.76	6.804	6.983	104.38	106.47	7-May-26	107.05	2.64	26
FR0089	7-Jan-21	15-Aug-51	6.88	25.3	11.73	6.88	↓ -0.5bps	99.94	6.805	6.991	98.62	100.82	7-May-26	98.50	24.79	76
FR0102	5-Jan-24	15-Jul-54	6.88	28.2	12.13	6.87	↓ -2.1bps	100.04	6.761	7.002	98.44	101.41	7-May-26	100.06	157.41	80
FR0105	27-Aug-24	15-Jul-64	6.88	38.2	13.20	6.85	↓ -1.8bps	100.33	6.742	7.016	98.12	101.80	14-Apr-25	99.00	0.10	1
ORI024T6	8-Nov-23	15-Oct-29	6.35	3.4	-	6.33	↑ 0.3bps	100.06	6.035	6.613	99.19	100.98	7-May-26	101.75	2.15	8
ORI025T6	28-Feb-24	15-Feb-30	6.40	3.8	-	6.40	↓ -0.7bps	99.99	6.128	6.577	99.41	100.91	7-May-26	100.50	13.01	11
ORI026T6	30-Oct-24	15-Oct-30	6.40	4.4	-	6.32	↑ 0.3bps	100.30	6.098	6.556	99.40	101.17	7-May-26	100.50	1.13	5
PBS003	2-Feb-12	15-Jan-27	6.00	0.7	0.66	5.98	↑ 0.2bps	100.00	6.118	6.939	99.37	99.91	7-May-26	100.00	2,142.78	88
PBS020	22-Oct-18	15-Oct-27	9.00	1.4	1.34	5.43	↓ -1.6bps	104.84	5.691	6.512	103.36	104.51	31-Jul-24	108.25	0.50	1
PBS018	4-Jun-18	15-May-28	7.63	2.0	1.80	5.89	↑ 37.1bps	103.24	5.933	6.436	102.22	103.18	3-Sep-19	99.29	2,000.00	2
PBS030	4-Jun-21	15-Jul-28	5.88	2.2	1.99	6.24	↓ -16.8bps	99.27	6.234	6.401	98.93	99.27	7-May-26	99.25	916.62	273
PBSG001	22-Sep-22	15-Sep-29	6.63	3.4	2.95	6.27	↑ 2.5bps	101.04	5.799	6.619	100.01	102.48	6-May-26	100.55	8.00	2
IFR0006	1-Apr-10	15-Mar-30	10.25	3.9	3.19	6.03	↓ -0.8bps	114.27	5.795	6.584	112.29	115.18	11-Mar-26	113.43	2.00	2
PBS023	15-May-19	15-May-30	8.13</													

PRICE INDEX



YIELD INDEX



TECHNICAL ANALYSIS

FR0109

INDICATORS	7-May-26	-1 Day	Change
Last Price	97.46	96.68	0.78
DI+	24.75	11.06	13.70
DI-	43.03	50.90	(7.87)
ADX (15D)	45.42	46.74	(1.32)
A/D	-40,871.04	-38,069.61	(2,801.43)
CMF(20D)	-0.354	-0.321	(0.03)
CCI	-34.45	-92.96	58.51
Volume (IDR bn)	2,935.24	2,803.05	132.19
Frequency	190	178	12

COMMENT

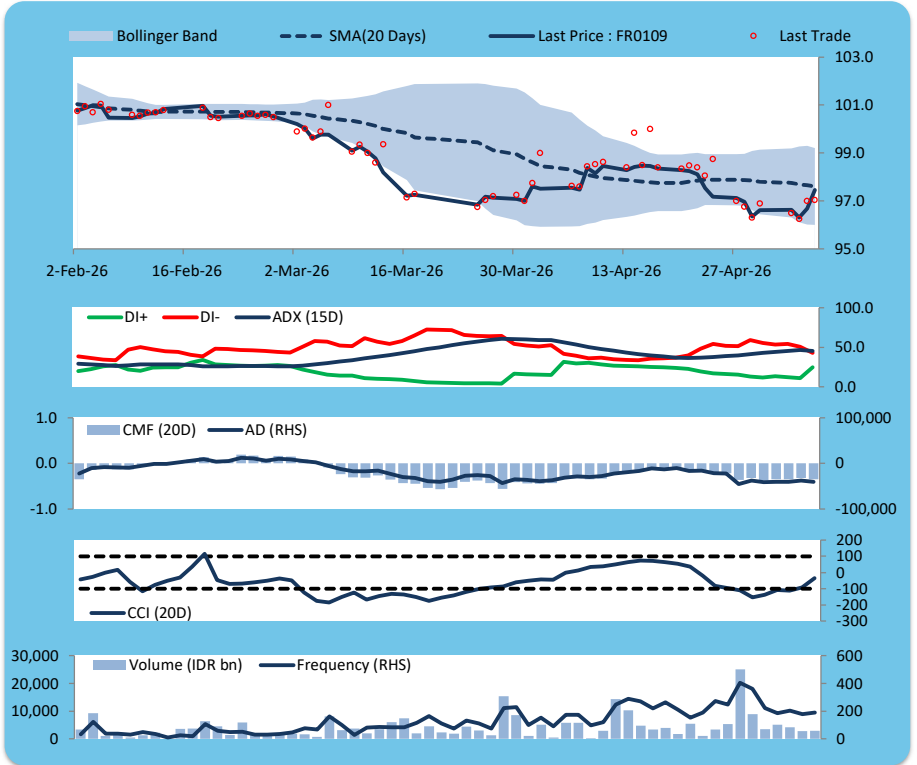
Price increased; heavy trade volume; upward trend continues to weaken; selling pressure increased; CCI increased.

BUY

FEATURES

Issue Date	14-Aug-25
Mature Date	15-Mar-31
Tenor	4.9
Coupon Rate	5.88
Last Yield	6.49
Modified Duration	4.12
Previous Coupon Date	15-Mar-26
Next Coupon Date	15-Sep-26

Sources: Bloomberg (Price); IDX



FR0108

INDICATORS	7-May-26	-1 Day	Change
Last Price	99.15	98.49	0.66
DI+	35.57	26.90	8.67
DI-	33.82	38.37	(4.55)
ADX (15D)	28.06	29.88	(1.82)
A/D	2,163.52	2,443.73	(280.21)
CMF(20D)	0.064	0.071	(0.01)
CCI	11.64	-46.73	58.37
Volume (IDR bn)	2,140.21	1,085.38	1,054.83
Frequency	213	225	(12)

COMMENT

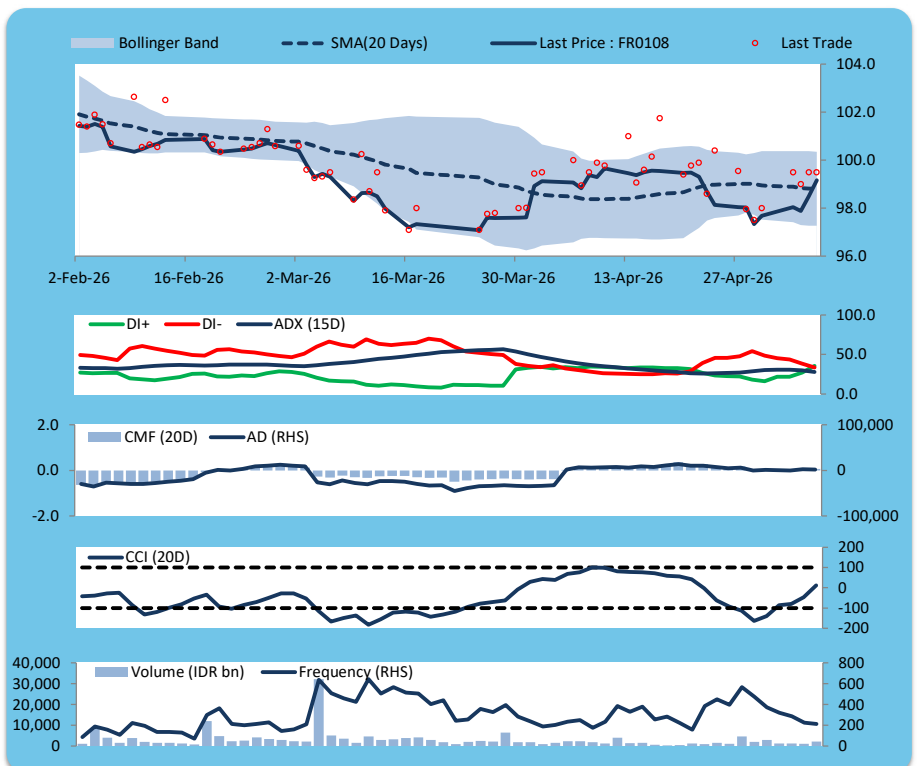
Price increased; heavy trade volume; upward trend continues to weaken; buying pressure eased; CCI increased.

BUY

FEATURES

Issue Date	31-Jul-25
Mature Date	15-Apr-36
Tenor	9.9
Coupon Rate	6.50
Last Yield	6.62
Modified Duration	7.20
Previous Coupon Date	15-Apr-26
Next Coupon Date	15-Oct-26

Sources: Bloomberg (Price); IDX



FR0106

INDICATORS	7-May-26	-1 Day	Change
Last Price	103.15	102.31	0.84
DI+	37.03	23.70	13.32
DI-	43.02	52.16	(9.14)
ADX (15D)	27.28	28.69	(1.41)
A/D	983.40	824.50	158.90
CMF(20D)	0.085	0.072	0.01
CCI	-44.13	-113.29	69.16
Volume (IDR bn)	1,058.89	868.57	190.32
Frequency	96	98	(2)

COMMENT

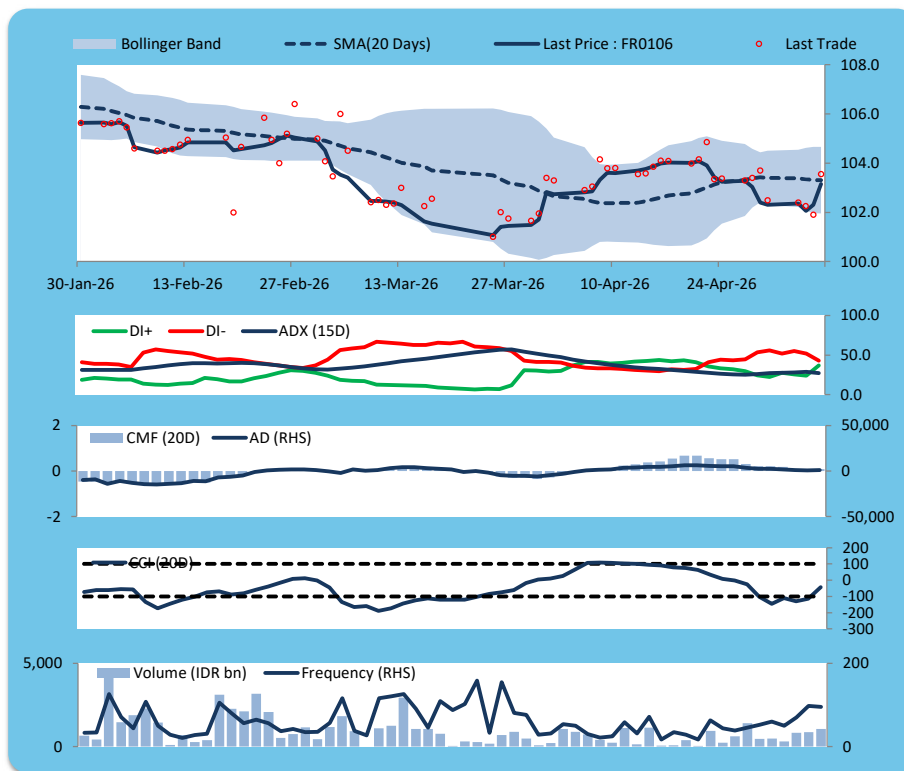
Price increased; heavy trade volume; upward trend continues to weaken; buying pressure increased; CCI increased.

BUY

FEATURES

Issue Date	9-Jan-25
Mature Date	15-Aug-40
Tenor	14.3
Coupon Rate	7.13
Last Yield	6.78
Modified Duration	8.83
Previous Coupon Date	15-Feb-26
Next Coupon Date	15-Aug-26

Sources: Bloomberg (Price); IDX



FR0107

INDICATORS	7-May-26	-1 Day	Change
Last Price	104.28	103.86	0.42
DI+	36.02	29.70	6.32
DI-	40.18	44.24	(4.06)
ADX (15D)	26.14	27.61	(1.48)
A/D	119.46	94.63	24.83
CMF(20D)	0.008	0.006	0.00
CCI	-47.12	-86.56	39.44
Volume (IDR bn)	755.29	366.70	388.59
Frequency	60	30	30

COMMENT

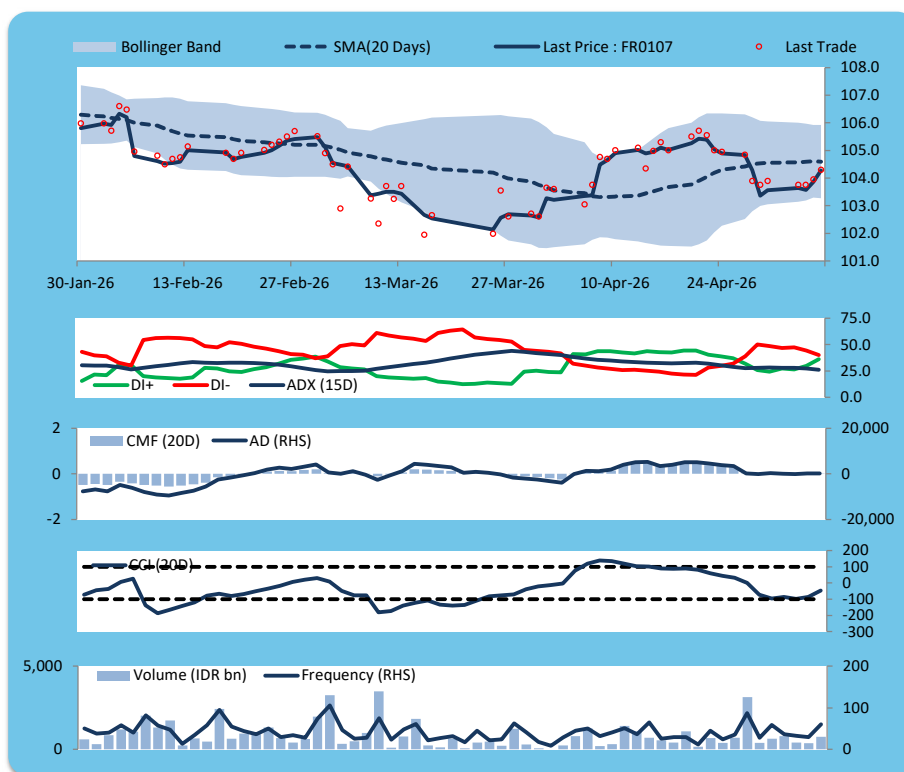
Price increased; heavy trade volume; upward trend continues to weaken; buying pressure increased; CCI increased.

BUY

FEATURES

Issue Date	9-Jan-25
Mature Date	15-Aug-45
Tenor (year)	19.3
Coupon Rate	7.13
Last Yield	6.72
Modified Duration	10.43
Previous Coupon Date	15-Feb-26
Next Coupon Date	15-Aug-26

Sources: Bloomberg (Price); IDX



ECONOMIC AND FIXED INCOME RESEARCH TEAM**Chief Economist and Head Fixed Income Research**

Helmy Kristanto	helmy.kristanto@brids.co.id	(62-21) 5091 4100 ext. 3400
-----------------	-----------------------------	-----------------------------

Economists

Relindya Yuriswari Salehaningtyas	relindya.salehaningtyas@brids.co.id	(62-21) 5091 4100 ext. 3609
Ebenezer Mesotuhu Harefa	ebenezer.harefa@brids.co.id	(62-21) 5091 4100 ext. 3609

Credit Analyst

Laras Nerpatari Suliyas	laras.nerpatari@brids.co.id	(62-21) 5091 4100 ext. 3403
-------------------------	-----------------------------	-----------------------------

Production & Database Management

Eka Nuraini	ekan@brids.co.id	(62-21) 5091 4100 ext. 3407
Faiqul Kurnia Muslim	faiqul.muslim@brids.co.id	(62-21) 5091 4100 ext. 3402

INSTITUTIONAL DEBT SALES & TRADING TEAM**Head of Debt Capital Market**

Yopi Chandra Wardhani	yopi.wardhani@brids.co.id	(62-21) 5091 4100 ext. 3220
-----------------------	---------------------------	-----------------------------

Debt Sales

Rachmat Eko Putranto	rachmat.putranto@brids.co.id	(62-21) 5091 4100 ext. 3218
Rafi Hutama Soeriaatmadja	rafi.soeriaatmadja@brids.co.id	(62-21) 5091 4100 ext. 3926
Adzkia Zahra	adzkia.zahra@brids.co.id	(62-21) 5091 4100 ext. 3924

Debt Brokerage

Citra Isramij P.	citra.isramij@brids.co.id	(62-21) 5091 4100 ext. 3228
Sisca Emilia	sisca.emilia@brids.co.id	(62-21) 5091 4100 ext. 3921
Deviano Sujitno	deviano.sujitno@brids.co.id	(62-21) 5091 4100 ext. 3925

DISCLAIMER: The information contained in this report has been taken from sources which we deem reliable. However, none of P.T. BRI Danareksa Sekuritas and/or its affiliated companies and/or their respective employees and/or agents makes any representation or warranty (express or implied) or accepts any responsibility or liability as to, or in relation to, the accuracy or completeness of the information and opinions contained in this report or as to any information contained in this report or any other such information or opinions remaining unchanged after the issue thereof. We expressly disclaim any responsibility or liability (express or implied) of P.T. BRI Danareksa Sekuritas, its affiliated companies and their respective employees and agents whatsoever and howsoever arising (including, without limitation for any claims, proceedings, action, suits, losses, expenses, damages or costs) which may be brought against or suffered by any person as a result of acting in reliance upon the whole or any part of the contents of this report and neither P.T. BRI Danareksa Sekuritas, its affiliated companies or their respective employees or agents accepts liability for any errors, omissions or mis-statements, negligent or otherwise, in the report and any liability in respect of the report or any inaccuracy therein or omission therefrom which might otherwise arise is hereby expressly disclaimed. The information contained in this report is not to be taken as any recommendation made by P.T. BRI Danareksa Sekuritas or any other person to enter into any agreement with regard to any investment mentioned in this document. This report is prepared for general circulation. It does not have regard to the specific person who may receive this report. In considering any investments you should make your own independent assessment and seek your own professional financial and legal advice.