

**MOST ACTIVE GOVERNMENT BONDS**

Bond	Coupon	Maturity	Last Price	Yield	Volume (IDR bn)
FR0109	5.875	15-Mar-31	96.25	6.775	4,136.92
FR0104	6.500	15-Jul-30	99.00	6.717	3,248.95
PBS003	6.000	15-Jan-27	99.93	5.807	2,625.50
PBS032	4.875	15-Jul-26	99.80	5.178	2,390.07
PBS038	6.875	15-Dec-49	100.75	6.753	1,967.45
FR0082	7.000	15-Sep-30	100.82	6.636	1,488.86
FR0103	6.750	15-Jul-35	99.59	6.814	1,449.59
FR0108	6.500	15-Apr-36	99.00	6.794	1,287.67
PBS030	5.880	15-Jul-28	99.03	6.260	1,030.63
FR0101	6.875	15-Apr-29	100.75	6.439	1,022.11

Coupon, Last Price & Yield are in %; Volume is in IDR bn; Rating code: id(Pefindo) & idn (Fitch Indonesia)  
Sources: Bloomberg; Indonesia Stock Exchange (Volume)

**MOST ACTIVE CORPORATE BONDS**

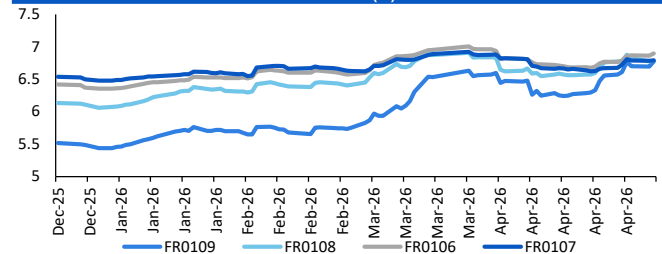
Bond	Rating	Coupon	Maturity	Last Price	Yield	Volume
TRIM01BCN1	A	9.250	6-Jul-26	100.48	9.21	572.68
BBKP02ACN2	AAA	6.450	9-Sep-26	100.32	6.43	434.90
SMLP0101CN1	A	11.000	4-Oct-29	107.81	8.35	380.00
SMPPGD01ASOCN3AAA	AAA	5.250	23-Nov-26	100.02	5.25	370.00
WISL02B	A	8.000	8-Aug-26	100.32	7.97	336.00
SIBAL01BCN3	A	7.250	5-Dec-28	96.10	8.96	330.00
PIDL01CCN2	A+	10.500	30-Apr-30	107.03	8.41	311.50
SIMORA02ACN2	A+	10.000	16-Jan-27	102.02	9.80	301.00
SIJEE01B	A	11.500	8-Jul-28	106.31	8.30	200.00
SMNPMP01ASECN1AAA	AAA	6.250	18-Jul-26	100.32	6.23	180.00

**SOVEREIGN BOND YIELDS**

Country	Tenor	Coupon (%)	MA LTM as of			Spread over UST YC (bps)		
			5-May-26	of Apr	Mar	5-May-26	Apr	Mar
United States	2yr		3.96	3.89	3.82			
USD	5yr		4.07	4.01	3.94			
	10yr		4.43	4.37	4.32			
German	2yr	0.25	2.70	2.64	2.62	-124	-123	-118
EUR	5yr	1.00	2.79	2.75	2.73	-129	-126	-122
	10yr	1.75	3.07	3.04	3.00	-136	-134	-132
Indonesia	2yr	3.50	4.16	4.20	4.48	22	32	68
USD	5yr	3.85	4.59	4.57	4.91	52	56	97
	10yr	6.63	5.37	5.35	5.57	95	98	125
Brazil	2yr	0.00	13.86	13.71	13.74	993	984	994
BRL	3yr	0.00	13.96	13.81	13.84	1,002	994	1,004
	10yr	10.00	14.06	13.98	14.02	1,012	1,010	1,022
Philippines	2yr	6.00	5.69	5.39	5.17	175	151	137
PHP	5yr	7.88	7.18	6.84	6.77	311	283	282
	10yr	11.38	7.47	7.05	7.08	304	267	276
Thailand	2yr	3.13	1.25	1.24	1.45	-269	-264	-235
THB	5yr	3.45	1.61	1.61	1.73	-246	-240	-222
	10yr	3.63	2.25	2.20	2.26	-218	-218	-207
India	2yr	7.59	6.29	6.26	6.42	235	239	262
INR	5yr	7.28	6.75	6.76	6.76	268	277	282
	10yr	8.83	7.03	7.04	7.03	260	266	271
Malaysia	3yr	3.17	3.22	3.21	3.28	-74	-68	-54
MYR	5yr	3.26	3.37	3.36	3.44	-70	-65	-50
	10yr	4.18	3.59	3.57	3.64	-84	-80	-68

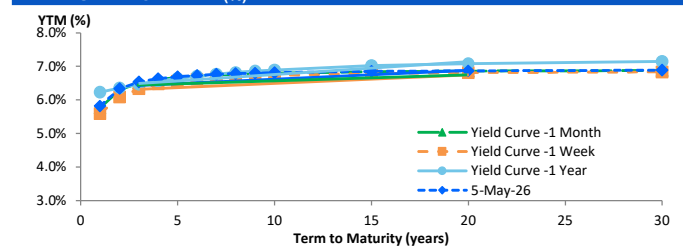
Sources: Bloomberg (Current Yield Curve), US Treasury

**YIELD OF GOVERNMENT BOND BENCHMARK (%)**



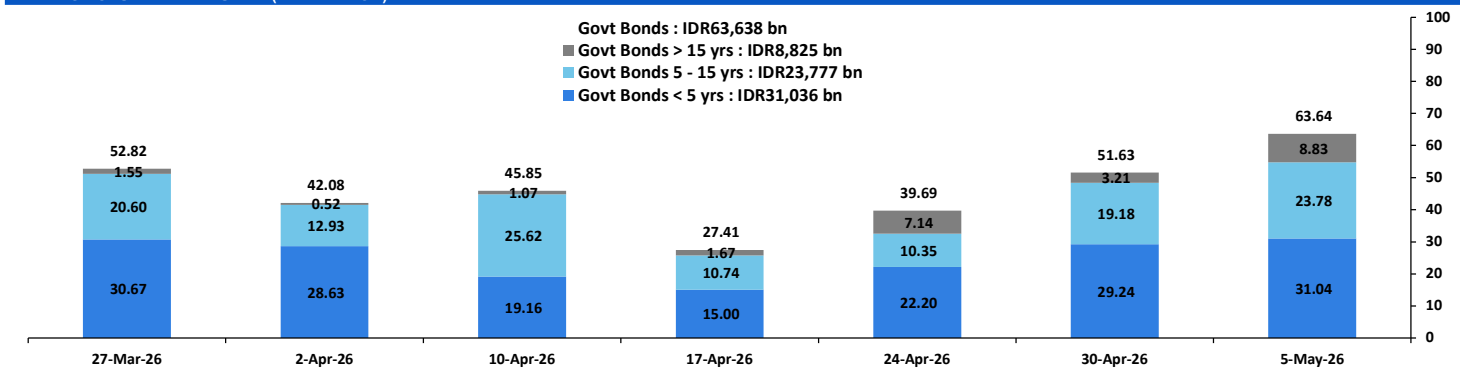
Source: Bloomberg

**YIELD CURVE MOVEMENT (%)**



Source: Bloomberg

**TRADING VOLUME BY MATURITY (IDR TRILLION)**



Sources: Indonesia Stock Exchange

**CURRENCY**

Price	5-May-26	-1 Day	-1 Week	-1 Month	EoP2025
DXY	98.49	98.37	98.64	100.03	98.32
USD/IDR	17,425	17,380	17,225	17,000	16,690
EUR/USD	1.17	1.17	1.17	1.15	1.17
USD/JPY	157.61	157.24	159.62	159.67	156.71
USD/CNY	6.828	6.828	6.838	6.882	6.988
USD/MYR	3.961	3.956	3.953	4.030	4.060
SGD/IDR	13,645	13,644	13,509	13,212	12,969

Source: Bloomberg

**COMMODITY**

Price	5-May-26	-1 Day	-1 Week	-1 Month	EoP2025
CPO (Palm Oil)	4,638	4,504	4,468	4,745	3,998
Coal	134.50	133.90	131.25	137.90	107.50
Gold (XAU/USD)	4,554	4,522	4,597	4,677	4,319
Nickel	19,216	19,319	19,306	16,916	16,546
Copper	590.40	579.50	591.75	558.35	568.20
Brent	112.97	114.44	111.26	109.03	60.85
WTI	104.18	106.42	99.93	111.54	57.42

**PHEI FAIR SPREAD**

	1Y	2Y	3Y	4Y	5Y	6Y	7Y	8Y	9Y	10Y
AAA	36	40	43	47	51	56	59	63	65	67
AA+	43	45	47	50	53	56	59	62	64	65
AA	62	64	65	67	70	73	76	78	79	80
AA-	104	106	108	111	115	118	121	122	123	124
A+	158	165	168	173	179	183	186	188	189	189
A	214	226	233	242	250	256	260	263	264	265
A-	262	282	294	306	318	327	333	337	339	340
BBB+	301	331	349	367	383	395	404	409	413	415
BBB	337	377	403	426	446	462	473	481	485	488

\*interpolated, as of May 05, 2026 (bps)

Sources: PHEI, Bloomberg

**SBN HOLDING - (IDR tn)**

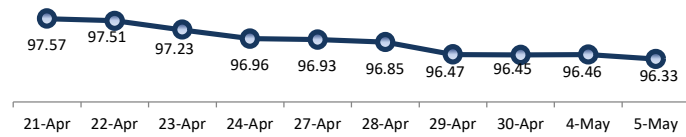
	30-Apr-2026	WoW	MTD	YTD
Banks	1,223.4	(117.6)	(162.0)	(105.2)
Bank Indonesia (exclude repo)	1,822.0	133.6	133.3	180.4
Non-Banks:				
Mutual Fund	257.6	(3.6)	(4.0)	14.7
Insurance & Pension Fund	1,371.3	13.8	18.9	80.6
Foreign Investor	866.9	9.8	13.4	(11.7)
Individual	550.2	1.3	18.1	12.9
Others	710.7	2.7	13.6	61.8
<b>Total</b>	<b>6,802.1</b>	<b>40.0</b>	<b>31.2</b>	<b>233.3</b>
Domestic Investor	4,113.2	(103.4)	(115.4)	64.7
Foreign Investor	866.9	9.8	13.4	(11.7)
Bank Indonesia (include repo)	1,709.0	8.1	17.8	68.4

Source: DJPPR (Processed)

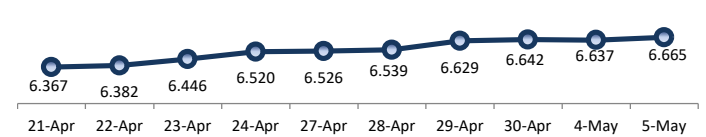
VALUATIONS OF GOVERNMENT BONDS

Bond	Issue Date	Mature Date	Coupon	TTM	Modified Duration	YTM	(Change)	Prev Closing Price	Fair Yield Range		Fair Price Range		Last Trade			
													Date	Price	Vol (IDR bn)	Freq
FR0056	23-Sep-10	15-Sep-26	8.38	0.4	0.35	5.54	↑ 5.40bps	100.97	4.982	5.113	101.14	101.18	5-May-26	100.77	680.51	44
FR0090	8-Jul-21	15-Apr-27	5.13	0.9	0.90	6.19	↓ -5.00bps	99.03	5.837	5.968	99.23	99.35	5-May-26	98.90	366.75	109
FR0059	15-Sep-11	15-May-27	7.00	1.0	0.95	6.23	↓ -0.60bps	100.75	5.938	6.069	100.91	101.04	5-May-26	101.10	327.42	22
FR0042	25-Jan-07	15-Jul-27	10.25	1.2	1.09	6.14	↓ -2.20bps	104.63	6.043	6.174	104.61	104.77	4-May-26	103.05	0.01	2
FR0094	4-Mar-22	15-Jan-28	5.60	1.7	1.57	6.01	↓ -0.30bps	99.35	5.975	6.106	99.19	99.39	16-Mar-26	98.95	1.90	1
FR0047	30-Aug-07	15-Feb-28	10.00	1.8	1.60	6.25	↑ 2.10bps	106.19	6.259	6.390	105.97	106.20	5-May-26	106.85	1.12	4
FR0064	13-Aug-12	15-May-28	6.13	2.0	1.83	6.30	↑ 4.70bps	99.67	6.247	6.379	99.52	99.77	5-May-26	99.50	481.16	24
FR0095	19-Aug-22	15-Aug-28	6.38	2.3	2.07	6.28	↑ 3.70bps	100.19	6.266	6.397	99.94	100.22	5-May-26	99.55	117.32	21
FR0099	27-Jan-23	15-Jan-29	6.40	2.7	2.40	6.46	↓ -0.30bps	99.83	6.657	6.789	99.04	99.36	1-Jul-25	99.50	49.05	2
FR0071	12-Sep-13	15-Mar-29	9.00	2.9	2.49	6.46	↑ 5.90bps	106.53	6.388	6.519	106.37	106.72	5-May-26	105.50	0.30	2
FR0101	2-Nov-23	15-Apr-29	6.88	2.9	2.62	6.44	↑ 7.50bps	101.15	6.399	6.531	100.90	101.25	5-May-26	100.75	1,022.11	40
FR0078	27-Sep-18	15-May-29	8.25	3.0	2.57	6.49	↑ 2.90bps	104.75	6.427	6.559	104.57	104.94	5-May-26	104.50	21.21	9
FR0104	22-Aug-24	15-Jul-30	6.50	4.2	3.55	6.72	↑ 8.90bps	99.21	6.573	6.704	99.25	99.72	5-May-26	99.00	3,248.95	99
FR0052	20-Aug-09	15-Aug-30	10.50	4.3	3.43	6.53	↑ 0.80bps	114.60	6.564	6.696	113.94	114.46	4-May-26	113.60	3.97	2
FR0082	1-Aug-19	15-Sep-30	7.00	4.4	3.68	6.64	↑ 5.80bps	101.35	6.560	6.691	101.14	101.64	5-May-26	100.82	1,488.86	52
FRSDG001	27-Oct-22	15-Oct-30	7.38	4.4	3.74	6.68	↑ 41.60bps	102.64	5.993	6.124	104.80	105.32	4-May-26	102.15	0.30	1
FR0087	13-Aug-20	15-Feb-31	6.50	4.8	3.99	6.76	↑ 3.50bps	98.95	6.599	6.731	99.06	99.59	5-May-26	100.00	629.14	69
<b>FR0109</b>	<b>15-Aug-25</b>	<b>15-Mar-31</b>	<b>5.88</b>	<b>4.9</b>	<b>4.11</b>	<b>6.78</b>	<b>↑ 8.00bps</b>	<b>96.32</b>	<b>6.581</b>	<b>6.712</b>	<b>96.57</b>	<b>97.09</b>	<b>5-May-26</b>	<b>96.25</b>	<b>4,136.92</b>	<b>204</b>
FR0085	4-May-20	15-Apr-31	7.75	4.9	4.07	6.59	↑ 4.80bps	104.82	6.615	6.747	104.15	104.71	5-May-26	103.50	120.67	2
FR0073	6-Aug-15	15-May-31	8.75	5.0	3.94	6.52	↓ -11.30bps	109.44	6.505	6.637	108.91	109.49	5-May-26	108.29	154.86	13
FR0054	22-Jul-10	15-Jul-31	9.50	5.2	4.04	6.71	↑ 0.20bps	112.03	6.661	6.793	111.67	112.28	5-May-26	112.60	0.00	1
FR0091	8-Jul-21	15-Apr-32	6.38	5.9	4.85	6.79	↑ 4.00bps	97.98	6.636	6.767	98.10	98.73	5-May-26	98.10	393.80	98
FR0058	21-Jul-11	15-Jun-32	8.25	6.1	4.67	6.73	↓ -4.80bps	107.52	6.643	6.774	107.27	107.96	5-May-26	109.00	1.45	2
FR0074	10-Nov-16	15-Aug-32	7.50	6.3	4.91	6.74	↑ 4.10bps	103.84	6.655	6.777	103.63	104.27	5-May-26	103.75	112.37	11
FR0096	19-Aug-22	15-Feb-33	7.00	6.8	5.27	6.71	↑ 3.60bps	101.54	6.699	6.756	101.30	101.61	5-May-26	99.75	677.35	50
FR0065	30-Aug-12	15-May-33	6.63	7.0	5.38	6.56	↓ -4.00bps	100.38	6.663	6.794	99.06	99.79	5-May-26	100.00	122.88	38
FR0100	24-Aug-23	15-Feb-34	6.63	7.8	5.91	6.82	↑ 3.00bps	98.85	6.716	6.847	98.66	99.44	5-May-26	99.75	389.42	89
FR0068	1-Aug-13	15-Mar-34	8.38	7.9	5.75	6.83	↑ 1.90bps	109.26	6.747	6.879	108.96	109.79	5-May-26	109.21	252.87	22
FR0080	4-Jul-19	15-Jun-35	7.50	9.1	6.62	6.82	↑ 2.60bps	104.58	6.727	6.851	104.34	105.19	5-May-26	104.30	157.56	44
FR0103	29-Jul-25	15-Jul-35	6.75	9.2	6.63	6.81	↑ 0.70bps	99.56	6.738	6.869	99.18	100.07	5-May-26	99.59	1,449.59	92
<b>FR0108</b>	<b>31-Jul-25</b>	<b>15-Apr-36</b>	<b>6.50</b>	<b>9.9</b>	<b>7.18</b>	<b>6.79</b>	<b>↑ 1.90bps</b>	<b>97.89</b>	<b>6.683</b>	<b>6.814</b>	<b>97.75</b>	<b>98.68</b>	<b>5-May-26</b>	<b>99.00</b>	<b>1,287.67</b>	<b>287</b>
FR0072	9-Jul-15	15-May-36	8.25	10.0	6.69	6.85	↑ 1.70bps	110.05	6.730	6.861	109.95	110.95	5-May-26	109.70	2.39	12
FR0088	7-Jan-21	15-Jun-36	6.25	10.1	7.16	6.76	↑ 1.80bps	96.29	6.653	6.785	96.12	97.06	5-May-26	95.50	17.18	35
FR0045	24-May-07	15-May-37	9.75	11.0	6.89	6.87	↑ 6.80bps	122.05	6.847	6.978	121.07	122.21	20-Apr-26	124.50	1.20	1
FR0093	6-Jan-22	15-Jul-37	6.38	11.2	7.70	6.77	↑ 2.90bps	96.93	6.666	6.797	96.71	97.72	5-May-26	99.00	2.55	16
FR0075	10-Aug-17	15-May-38	7.50	12.0	7.70	6.89	↑ 3.30bps	104.89	6.765	6.897	104.87	105.98	5-May-26	104.00	4.81	19
FR0098	15-Sep-22	15-Jun-38	7.13	12.1	7.86	6.89	↑ 4.60bps	101.93	6.746	6.877	102.00	103.09	5-May-26	102.25	650.19	66
FR0050	24-Jan-08	15-Jul-38	10.50	12.2	7.35	6.86	↑ 39.20bps	129.68	6.503	6.634	131.96	133.28	5-May-26	129.14	33.80	2
FR0079	7-Jan-19	15-Apr-39	8.38	12.9	8.12	6.90	↑ 4.80bps	112.48	6.774	6.906	112.44	113.65	5-May-26	112.13	278.22	22
FR0083	7-Nov-19	15-Apr-40	7.50	13.9	8.69	6.89	↑ 3.30bps	105.41	6.768	6.899	105.32	106.54	5-May-26	105.11	62.85	24
<b>FR0106</b>	<b>9-Jan-25</b>	<b>15-Aug-40</b>	<b>7.13</b>	<b>14.3</b>	<b>8.80</b>	<b>6.90</b>	<b>↑ 3.60bps</b>	<b>102.06</b>	<b>6.728</b>	<b>6.859</b>	<b>102.38</b>	<b>103.59</b>	<b>5-May-26</b>	<b>102.25</b>	<b>834.93</b>	<b>70</b>
FR0057	21-Apr-11	15-May-41	9.50	15.0	8.42	6.79	↓ -3.80bps	125.26	6.791	6.893	124.15	125.27	14-Apr-26	126.50	5.25	2
FR0062	9-Feb-12	15-Apr-42	6.38	15.9	9.72	6.86	↑ 1.90bps	95.31	6.752	6.883	95.12	96.35	5-May-26	95.60	2.68	24
FR0092	8-Jul-21	15-Jun-42	7.13	16.1	9.35	6.83	↑ 2.90bps	102.84	6.703	6.834	102.80	104.11	5-May-26	102.25	9.15	26
FR0097	19-Aug-22	15-Jun-43	7.13	17.1	9.69	6.75	↑ 0.80bps	103.72	6.673	6.804	103.20	104.56	5-May-26	103.90	315.89	33
FR0067	18-Jul-13	15-Feb-44	8.75	17.8	9.53	6.90	↑ 0.40bps	118.80	6.773	6.905	118.71	120.24	28-Apr-26	118.80	2.46	2
<b>FR0107</b>	<b>9-Jan-25</b>	<b>15-Aug-45</b>	<b>7.13</b>	<b>19.3</b>	<b>10.41</b>	<b>6.79</b>	<b>↑ 0.70bps</b>	<b>103.58</b>	<b>6.640</b>	<b>6.772</b>	<b>103.76</b>	<b>105.22</b>	<b>5-May-26</b>	<b>103.75</b>	<b>416.53</b>	<b>33</b>
FR0076	22-Sep-17	15-May-48	7.38	22.0	10.75	6.88	↓ -0.10bps	105.63	6.792	6.923	105.07	106.61	5-May-26	105.00	37.81	30
FR0089	7-Jan-21	15-Aug-51	6.88	25.3	11.74	6.87	↑ 0.20bps	100.00	6.786	6.917	99.49	101.06	5-May-26	98.75	60.08	78
FR0102	5-Jan-24	15-Jul-54	6.88	28.2	12.12	6.89	↑ 0.30bps	99.79	6.757	6.889	99.82	101.46	5-May-26	100.50	177.48	86
FR0105	27-Aug-24	15-Jul-64	6.88	38.2	13.20	6.85	→ 0.00bps	100.27	6.738	6.870	100.06	101.86	14-Apr-25	99.00	0.10	1
ORI024T6	8-Nov-23	15-Oct-29	6.35	3.4	-	6.30	↑ 2.00bps	100.17	6.460	6.591	99.26	99.66	5-May-26	101.75	3.82	17
ORI025T6	28-Feb-24	15-Feb-30	6.40	3.8	-	6.38	↑ 2.60bps	100.08	6.480	6.612	99.29	99.73	5-May-26	98.75	6.18	30
ORI026T6	30-Oct-24	15-Oct-30	6.40	4.4	-	6.32	↓ -0.10bps	100.30	6.442	6.574	99.33	99.84	5-May-26	100.50	0.93	10
PBS003	2-Feb-12	15-Jan-27	6.00	0.7	0.66	5.81	↑ 4.10bps	100.12	4.992	5.124	100.58	100.67	5-May-26	99.93	2,625.50	106
PBS020	22-Oct-18	15-Oct-27	9.00	1.4	1.35	5.46	↓ -0.10bps	104.84	5.328	5.460	104.85	105.04	31-Jul-24	108.25	0.50	1
PBS018	4-Jun-18	15-May-28	7.63	2.0	1.81	5.53	↓ -0.20bps	103.96	5.609	5.740	103.56	103.81	3-Sep-19	99.29	2,000.00	2
<b>PBS030</b>	<b>4-Jun-21</b>	<b>15-Jul-28</b>	<b>5.88</b>	<b>2.2</b>	<b>1.99</b>	<b>6.26</b>	<b>→ 0.00bps</b>	<b>99.21</b>	<b>6.236</b>	<b>6.367</b>	<b>98.99</b>	<b>99.26</b>	<b>5-May-26</b>	<b>99.03</b>	<b>1,030.63</b>	<b>262</b>
PBSG001	22-Sep-22	15-Sep-29	6.63	3.4	2.95	6.20	↑ 2.50bps	101.25	6.223	6.354	100.80	101.19	4-May-26	100.75	0.30	1
IFR0006	1-Apr-10	15-Mar-30	10.25	3.9	3.19	6.03	↓ -0.70bps	114.31	6.285	6.416	112.91	113.39	11-Mar-26	113.43	2.00	2
PBS0																

PRICE INDEX



YIELD INDEX



TECHNICAL ANALYSIS

FR0109

INDICATORS	5-May-26	-1 Day	Change
Last Price	96.36	96.63	(0.27)
DI+	12.37	13.25	(0.88)
DI-	54.18	53.35	0.83
ADX (15D)	45.45	44.21	1.24
A/D	-40,343.58	-40,784.56	440.98
CMF(20D)	-0.347	-0.348	0.00
CCI	-109.82	-107.50	(2.32)
Volume (IDR bn)	4,136.92	5,097.42	(960.50)
Frequency	204	187	17

COMMENT

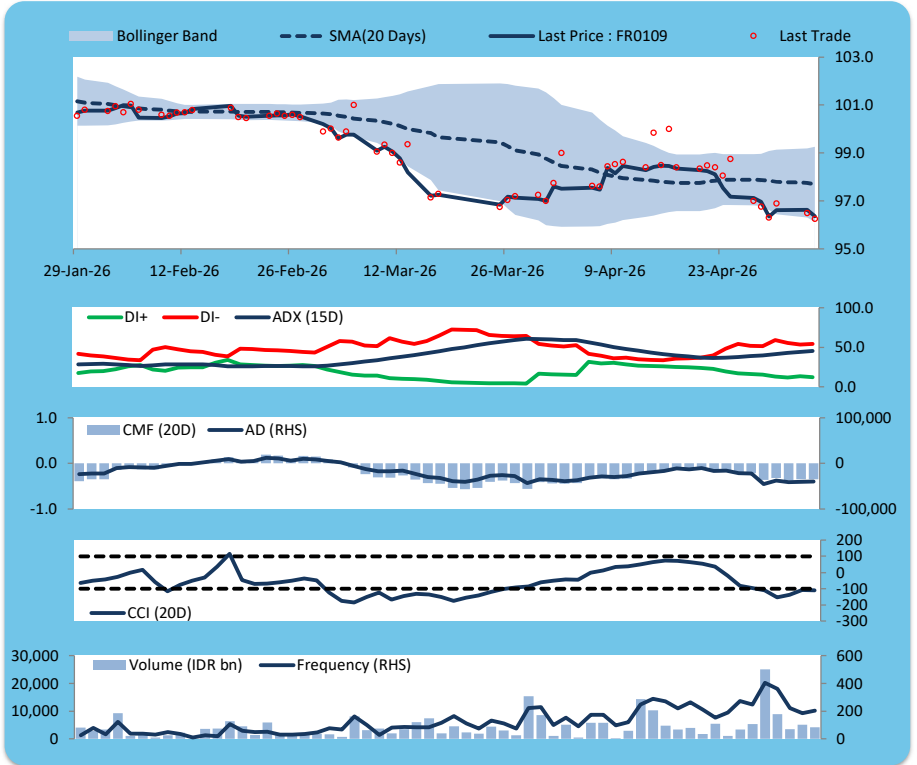
Price declined; heavy trade volume; downward trend continues to weaken; selling pressure eased; CCI declined.

SELL

FEATURES

Issue Date	14-Aug-25
Mature Date	15-Mar-31
Tenor	4.9
Coupon Rate	5.88
Last Yield	6.76
Modified Duration	4.11
Previous Coupon Date	15-Mar-26
Next Coupon Date	15-Sep-26

Sources: Bloomberg (Price); IDX



FR0108

INDICATORS	5-May-26	-1 Day	Change
Last Price	97.90	98.04	(0.14)
DI+	21.76	21.82	(0.06)
DI-	43.60	45.27	(1.67)
ADX (15D)	30.76	30.57	0.19
A/D	155.22	682.20	(526.97)
CMF(20D)	0.004	0.020	(0.02)
CCI	-78.96	-85.48	6.52
Volume (IDR bn)	1,287.67	1,303.68	(16.01)
Frequency	287	322	(35)

COMMENT

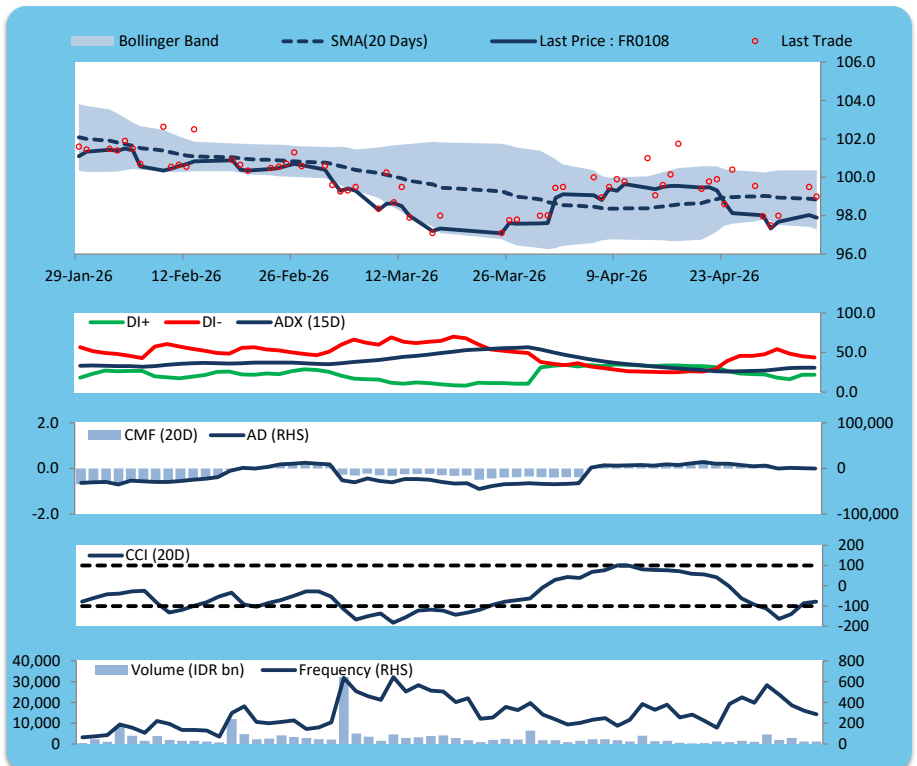
Price declined; heavy trade volume; upward trend continues to weaken; buying pressure eased; CCI increased.

SELL

FEATURES

Issue Date	31-Jul-25
Mature Date	15-Apr-36
Tenor	9.9
Coupon Rate	6.50
Last Yield	6.79
Modified Duration	7.18
Previous Coupon Date	15-Apr-26
Next Coupon Date	15-Oct-26

Sources: Bloomberg (Price); IDX



FR0106

INDICATORS	5-May-26	-1 Day	Change
Last Price	102.06	102.36	(0.30)
DI+	25.59	27.55	(1.97)
DI-	54.92	51.89	3.03
ADX (15D)	28.05	27.45	0.60
A/D	897.67	1,950.54	(1,052.87)
CMF(20D)	0.077	0.178	(0.10)
CCI	-130.05	-111.25	(18.80)
Volume (IDR bn)	834.93	323.64	511.29
Frequency	70	50	20

COMMENT

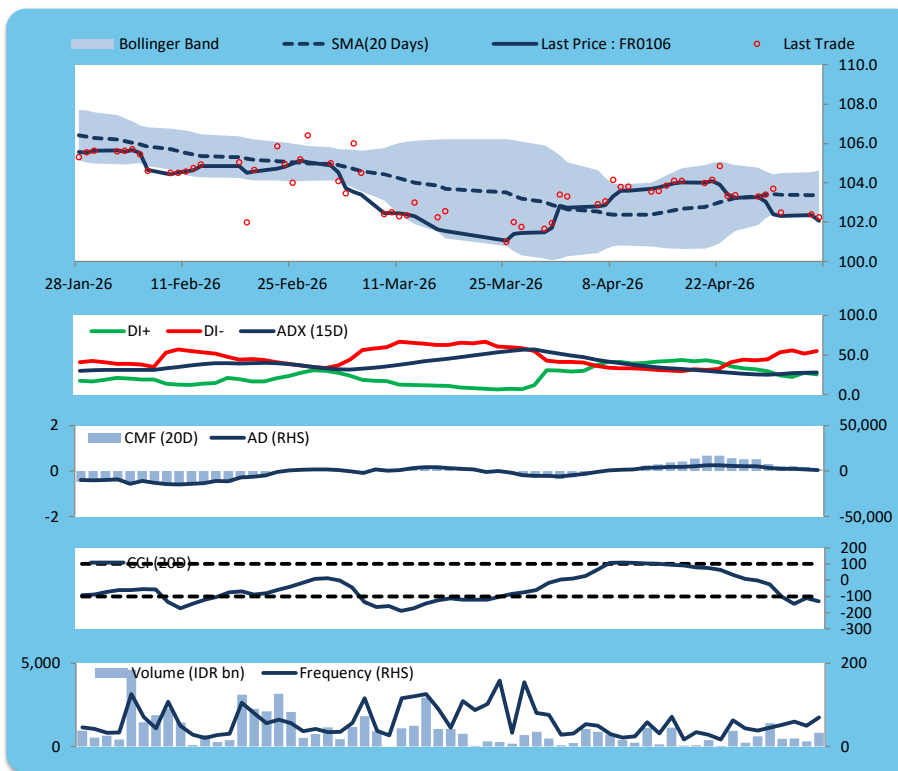
Price declined; heavy trade volume; downward trend continues to strengthen; buying pressure eased; CCI declined.

SELL

FEATURES

Issue Date	9-Jan-25
Mature Date	15-Aug-40
Tenor	14.3
Coupon Rate	7.13
Last Yield	6.89
Modified Duration	8.80
Previous Coupon Date	15-Feb-26
Next Coupon Date	15-Aug-26

Sources: Bloomberg (Price); IDX



FR0107

INDICATORS	5-May-26	-1 Day	Change
Last Price	103.56	103.64	(0.08)
DI+	26.50	27.33	(0.84)
DI-	47.35	46.74	0.61
ADX (15D)	28.18	28.18	0.00
A/D	-137.52	-30.44	(107.07)
CMF(20D)	-0.009	-0.002	(0.01)
CCI	-98.94	-85.66	(13.28)
Volume (IDR bn)	416.53	802.18	(385.66)
Frequency	33	37	(4)

COMMENT

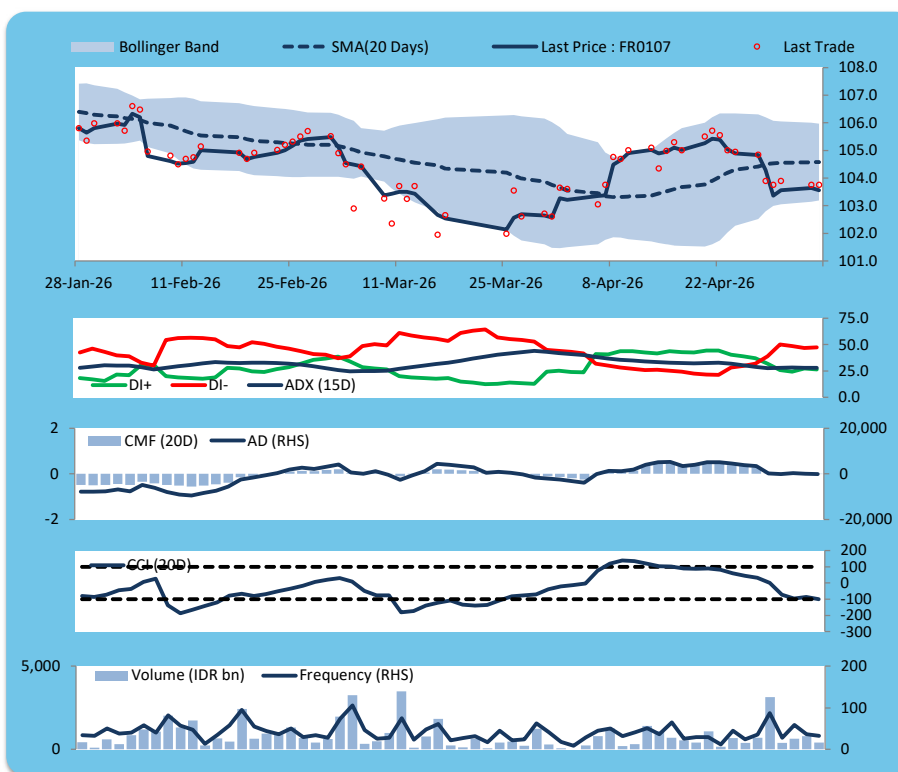
Price declined; moderate trade volume; downward trend continues to strengthen; selling pressure increased; CCI declined.

SELL

FEATURES

Issue Date	9-Jan-25
Mature Date	15-Aug-45
Tenor (year)	19.3
Coupon Rate	7.13
Last Yield	6.79
Modified Duration	10.41
Previous Coupon Date	15-Feb-26
Next Coupon Date	15-Aug-26

Sources: Bloomberg (Price); IDX



**ECONOMIC AND FIXED INCOME RESEARCH TEAM****Chief Economist and Head Fixed Income Research**

Helmy Kristanto	helmy.kristanto@brids.co.id	(62-21) 5091 4100 ext. 3400
-----------------	-----------------------------	-----------------------------

**Economists**

Relindya Yuriswari Salehaningtyas	relindya.salehaningtyas@brids.co.id	(62-21) 5091 4100 ext. 3609
Ebenezer Mesotuhu Harefa	ebenezer.harefa@brids.co.id	(62-21) 5091 4100 ext. 3609

**Credit Analyst**

Laras Nerpatari Suliyas	laras.nerpatari@brids.co.id	(62-21) 5091 4100 ext. 3403
-------------------------	-----------------------------	-----------------------------

**Production & Database Management**

Eka Nuraini	ekan@brids.co.id	(62-21) 5091 4100 ext. 3407
Faiqul Kurnia Muslim	faiqul.muslim@brids.co.id	(62-21) 5091 4100 ext. 3402

**INSTITUTIONAL DEBT SALES & TRADING TEAM****Head of Debt Capital Market**

Yopi Chandra Wardhani	yopi.wardhani@brids.co.id	(62-21) 5091 4100 ext. 3220
-----------------------	---------------------------	-----------------------------

**Debt Sales**

Rachmat Eko Putranto	rachmat.putranto@brids.co.id	(62-21) 5091 4100 ext. 3218
Rafi Hutama Soeriaatmadja	rafi.soeriaatmadja@brids.co.id	(62-21) 5091 4100 ext. 3926
Adzkia Zahra	adzkia.zahra@brids.co.id	(62-21) 5091 4100 ext. 3924

**Debt Brokerage**

Citra Isramij P.	citra.isramij@brids.co.id	(62-21) 5091 4100 ext. 3228
Sisca Emilia	sisca.emilia@brids.co.id	(62-21) 5091 4100 ext. 3921
Deviano Sujitno	deviano.sujitno@brids.co.id	(62-21) 5091 4100 ext. 3925

**DISCLAIMER:** The information contained in this report has been taken from sources which we deem reliable. However, none of P.T. BRI Danareksa Sekuritas and/or its affiliated companies and/or their respective employees and/or agents makes any representation or warranty (express or implied) or accepts any responsibility or liability as to, or in relation to, the accuracy or completeness of the information and opinions contained in this report or as to any information contained in this report or any other such information or opinions remaining unchanged after the issue thereof. We expressly disclaim any responsibility or liability (express or implied) of P.T. BRI Danareksa Sekuritas, its affiliated companies and their respective employees and agents whatsoever and howsoever arising (including, without limitation for any claims, proceedings, action, suits, losses, expenses, damages or costs) which may be brought against or suffered by any person as a result of acting in reliance upon the whole or any part of the contents of this report and neither P.T. BRI Danareksa Sekuritas, its affiliated companies or their respective employees or agents accepts liability for any errors, omissions or mis-statements, negligent or otherwise, in the report and any liability in respect of the report or any inaccuracy therein or omission therefrom which might otherwise arise is hereby expressly disclaimed. The information contained in this report is not to be taken as any recommendation made by P.T. BRI Danareksa Sekuritas or any other person to enter into any agreement with regard to any investment mentioned in this document. This report is prepared for general circulation. It does not have regard to the specific person who may receive this report. In considering any investments you should make your own independent assessment and seek your own professional financial and legal advice.