

### MOST ACTIVE GOVERNMENT BONDS

Bond	Coupon	Maturity	Last Price	Yield	Volume (IDR bn)
FR0109	5.875	15-Mar-31	96.50	6.695	5,097.42
PBS030	5.880	15-Jul-28	99.35	6.260	3,116.86
FR0103	6.750	15-Jul-35	99.90	6.807	2,027.45
FR0108	6.500	15-Apr-36	99.50	6.775	1,303.68
FR0096	7.000	15-Feb-33	101.00	6.674	935.77
FR0097	7.125	15-Jun-43	103.80	6.746	833.40
PBS032	4.875	15-Jul-26	99.95	5.282	820.62
PBS003	6.000	15-Jan-27	100.00	5.766	811.72
FR0102	6.875	15-Jul-54	98.90	6.888	805.47
FR0107	7.125	15-Aug-45	103.75	6.781	802.18

Coupon, Last Price & Yield are in %; Volume is in IDR bn; Rating code: id(Pefindo) & idn (Fitch Indonesia)  
Sources: Bloomberg; Indonesia Stock Exchange (Volume)

### MOST ACTIVE CORPORATE BONDS

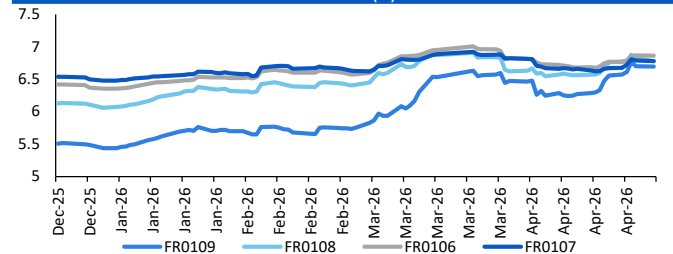
Bond	Rating	Coupon	Maturity	Last Price	Yield	Volume
PNMP01ASECN3	AAA	5.150	1-May-27	99.95	5.15	933.45
SMPNMP01ASECN4	AAA	5.150	1-May-27	99.95	5.15	597.00
MBMA01ACN1	A	7.500	15-Jul-26	100.17	7.49	430.00
SIBALI01BCN3	A	7.250	5-Dec-28	96.02	8.99	266.00
SMFFIN01BCN3	A	8.500	22-Jun-26	100.67	8.44	247.80
SMPPGD03ACN4	AAA	6.650	8-Jun-26	100.36	6.63	240.36
SMFPO6CN3	AAA	6.950	21-Sep-27	103.39	4.40	220.00
ADMF06BCN5	AAA	6.950	14-Feb-28	103.59	4.83	220.00
PPGD01BSOCN2	AAA	6.800	28-May-28	102.55	5.49	220.00
PPGD06ACN4	AAA	5.250	23-Nov-26	99.62	5.27	202.00

### SOVEREIGN BOND YIELDS

Country	Tenor	Coupon (%)	MA LTM as of			Spread over UST YC (bps)		
			4-May-26	4-Apr	Mar	4-May-26	Apr	Mar
United States	2yr		3.94	3.89	3.82			
USD	5yr		4.05	4.01	3.94			
	10yr		4.37	4.37	4.32			
German	2yr	0.25	2.68	2.64	2.62	-121	-123	-118
EUR	5yr	1.00	2.78	2.75	2.73	-127	-126	-122
	10yr	1.75	3.06	3.04	3.00	-132	-134	-132
Indonesia	2yr	3.50	4.16	4.20	4.48	28	32	68
USD	5yr	3.85	4.57	4.57	4.91	52	56	97
	10yr	6.63	5.35	5.35	5.57	98	98	125
Brazil	2yr	0.00	13.73	13.71	13.74	985	984	994
BRL	3yr	0.00	13.82	13.81	13.84	994	994	1,004
	10yr	10.00	13.98	13.98	14.02	1,009	1,010	1,022
Philippines	2yr	6.00	5.27	5.29	5.47	139	142	167
PHP	5yr	7.88	6.98	6.84	6.77	294	283	282
	10yr	11.38	7.11	7.05	7.08	274	267	276
Thailand	2yr	3.13	1.24	1.24	1.45	-265	-264	-235
THB	5yr	3.45	1.61	1.61	1.73	-244	-240	-222
	10yr	3.63	2.20	2.20	2.26	-217	-218	-207
India	2yr	7.59	6.33	6.26	6.42	245	239	262
INR	5yr	7.28	6.73	6.77	6.76	268	277	282
	10yr	8.83	7.00	7.04	7.03	263	266	271
Malaysia	3yr	3.17	3.21	3.21	3.28	-72	-68	-54
MYR	5yr	3.26	3.36	3.36	3.44	-69	-65	-50
	10yr	4.18	3.58	3.57	3.64	-80	-80	-68

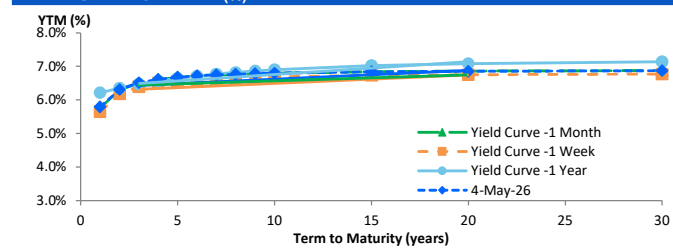
Sources: Bloomberg (Current Yield Curve), US Treasury

### YIELD OF GOVERNMENT BOND BENCHMARK (%)



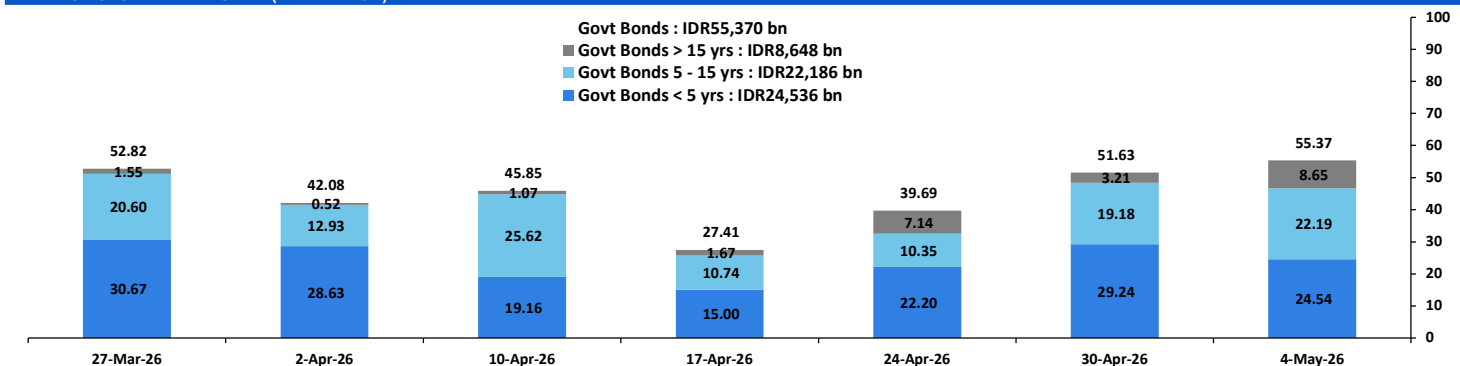
Source: Bloomberg

### YIELD CURVE MOVEMENT (%)



Source: Bloomberg

### TRADING VOLUME BY MATURITY (IDR TRILLION)



Sources: Indonesia Stock Exchange

### CURRENCY

Price	4-May-26	-1 Day	-1 Week	-1 Month	EoP2025
DX	98.22	98.06	98.50	100.03	98.32
USD/IDR	17,380	17,353	17,195	17,000	16,690
EUR/USD	1.17	1.17	1.17	1.15	1.17
USD/JPY	156.97	156.59	159.42	159.67	156.71
USD/CNY	6.828	6.828	6.827	6.882	6.988
USD/MYR	3.955	3.972	3.952	4.030	4.060
SGD/IDR	13,644	13,557	13,512	13,212	12,969

Source: Bloomberg

### COMMODITY

Price	4-May-26	-1 Day	-1 Week	-1 Month	EoP2025
CPO (Palm Oil)	4,561	4,505	4,465	4,745	3,998
Coal	133.90	133.65	132.25	137.90	107.50
Gold (XAU/USD)	4,583	4,618	4,682	4,677	4,319
Nickel	19,216	19,125	18,957	16,916	16,546
Copper	593.20	592.60	602.10	558.35	568.20
Brent	109.42	114.01	108.23	109.03	60.85
WTI	102.99	105.07	96.37	111.54	57.42

### PHEI FAIR SPREAD

	1Y	2Y	3Y	4Y	5Y	6Y	7Y	8Y	9Y	10Y
AAA	37	44	46	49	53	58	61	64	66	67
AA+	44	47	49	51	55	59	62	64	65	66
AA	63	65	66	69	72	75	78	79	80	81
AA-	104	105	108	112	116	119	121	122	123	123
A+	158	162	166	173	179	183	185	186	187	187
A	214	223	230	240	249	255	258	260	261	262
A-	261	279	291	304	316	325	331	335	337	338
BBB+	302	329	347	365	381	394	402	408	411	413
BBB	339	377	401	423	444	461	473	481	486	489

\*interpolated, as of May 04, 2026 (bps)

Sources: PHEI, Bloomberg

### SBN HOLDING - (IDR tn)

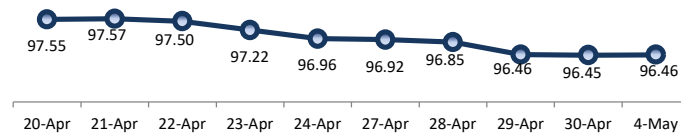
	29-Apr-2026	WoW	Mtd	YTD
Banks	1,228.1	(114.0)	(157.3)	(100.6)
Bank Indonesia (exclude repo)	1,795.8	105.3	107.1	154.1
Non-Banks:				
Mutual Fund	257.1	(4.0)	(4.5)	14.1
Insurance & Pension Fund	1,359.6	5.0	7.2	68.9
Foreign Investor	862.4	3.5	8.8	(16.3)
Individual	549.8	1.2	17.6	12.4
Others	709.5	12.9	12.4	60.6
<b>Total</b>	<b>6,762.1</b>	<b>10.0</b>	<b>(8.8)</b>	<b>193.3</b>
Domestic Investor	4,104.0	(98.8)	(124.6)	55.5
Foreign Investor	862.4	3.5	8.8	(16.3)
Bank Indonesia (include repo)	1,703.1	3.7	11.9	62.5

Source: DJPPR (Processed)

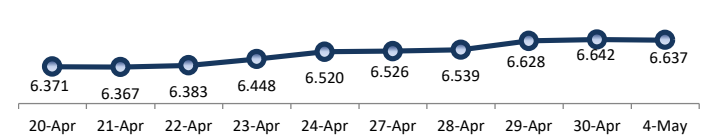
VALUATIONS OF GOVERNMENT BONDS

Bond	Issue Date	Mature Date	Coupon	TTM	Modified Duration	YTM	(Change)	Prev Closing Price	Fair Yield		Fair Price		Last Trade			
									Range	Range	Date	Price	Vol (IDR bn)	Freq		
FR0056	23-Sep-10	15-Sep-26	8.38	0.4	0.35	5.48	↓ -6.1bps	100.99	4.938	5.124	101.14	101.21	4-May-26	100.85	528.11	28
FR0090	8-Jul-21	15-Apr-27	5.13	0.9	0.91	6.24	↑ 5.1bps	98.99	5.779	5.965	99.23	99.40	4-May-26	99.03	470.75	177
FR0059	15-Sep-11	15-May-27	7.00	1.0	0.95	6.23	↑ 1.0bps	100.75	5.880	6.066	100.92	101.10	4-May-26	100.00	201.08	21
FR0042	25-Jan-07	15-Jul-27	10.25	1.2	1.10	6.16	↑ 7.0bps	104.62	5.999	6.186	104.61	104.83	4-May-26	103.05	0.01	2
FR0094	4-Mar-22	15-Jan-28	5.60	1.7	1.57	6.01	↓ -0.2bps	99.34	5.925	6.112	99.18	99.47	16-Mar-26	98.95	1.90	1
FR0047	30-Aug-07	15-Feb-28	10.00	1.8	1.60	6.23	↑ 1.8bps	106.23	6.217	6.403	105.96	106.28	4-May-26	105.97	3.10	3
FR0064	13-Aug-12	15-May-28	6.13	2.0	1.83	6.25	↓ -2.7bps	99.76	6.209	6.368	99.54	99.84	4-May-26	98.00	28.63	24
FR0095	19-Aug-22	15-Aug-28	6.38	2.3	2.07	6.24	↓ -0.5bps	100.26	6.223	6.405	99.93	100.31	4-May-26	99.10	81.21	32
FR0099	27-Jan-23	15-Jan-29	6.40	2.7	2.40	6.47	↓ -0.2bps	99.83	6.619	6.806	99.00	99.45	1-Jul-25	99.50	49.05	2
FR0071	12-Sep-13	15-Mar-29	9.00	2.9	2.49	6.40	↓ -0.6bps	106.69	6.365	6.504	106.41	106.79	4-May-26	106.60	246.51	13
FR0101	2-Nov-23	15-Apr-29	6.88	2.9	2.63	6.36	↓ -3.7bps	101.35	6.363	6.533	100.90	101.35	4-May-26	100.50	630.61	63
FR0078	27-Sep-18	15-May-29	8.25	3.0	2.57	6.46	↑ 0.1bps	104.84	6.401	6.549	104.60	105.02	4-May-26	104.90	50.73	4
FR0104	22-Aug-24	15-Jul-30	6.50	4.2	3.55	6.63	↓ -1.5bps	99.53	6.525	6.698	99.27	99.90	4-May-26	99.67	182.97	65
FR0052	20-Aug-09	15-Aug-30	10.50	4.3	3.43	6.52	↑ 3.5bps	114.64	6.524	6.710	113.89	114.64	4-May-26	113.60	3.97	2
FR0082	1-Aug-19	15-Sep-30	7.00	4.4	3.69	6.58	↓ -1.9bps	101.57	6.507	6.693	101.13	101.84	4-May-26	101.29	32.78	32
FRSDG001	27-Oct-22	15-Oct-30	7.38	4.4	3.76	6.26	↑ 4.2bps	104.25	5.900	6.087	104.95	105.69	4-May-26	102.15	0.30	1
FR0087	13-Aug-20	15-Feb-31	6.50	4.8	3.99	6.72	↑ 0.8bps	99.09	6.545	6.732	99.05	99.80	4-May-26	99.30	334.41	78
<b>FR0109</b>	<b>15-Aug-25</b>	<b>15-Mar-31</b>	<b>5.88</b>	<b>4.9</b>	<b>4.12</b>	<b>6.70</b>	<b>↓ -0.6bps</b>	<b>96.64</b>	<b>6.524</b>	<b>6.711</b>	<b>96.57</b>	<b>97.32</b>	<b>4-May-26</b>	<b>96.50</b>	<b>5,097.42</b>	<b>187</b>
FR0085	4-May-20	15-Apr-31	7.75	4.9	4.08	6.54	→ 0.0bps	105.03	6.570	6.757	104.11	104.91	24-Apr-26	105.55	0.00	1
FR0073	6-Aug-15	15-May-31	8.75	5.0	3.93	6.63	↑ 0.5bps	108.94	6.453	6.640	108.90	109.73	4-May-26	107.00	6.81	8
FR0054	22-Jul-10	15-Jul-31	9.50	5.2	4.04	6.71	↑ 1.4bps	112.05	6.615	6.802	111.63	112.50	4-May-26	111.67	28.26	4
FR0091	8-Jul-21	15-Apr-32	6.38	5.9	4.85	6.75	↑ 0.4bps	98.17	6.585	6.772	98.08	98.97	4-May-26	97.20	299.39	132
FR0058	21-Jul-11	15-Jun-32	8.25	6.1	4.67	6.77	↑ 25.0bps	107.27	6.598	6.784	107.23	108.19	4-May-26	106.75	0.00	1
FR0074	10-Nov-16	15-Aug-32	7.50	6.3	4.91	6.70	↓ -1.8bps	104.06	6.634	6.760	103.72	104.37	4-May-26	103.20	153.84	14
FR0096	19-Aug-22	15-Feb-33	7.00	6.8	5.27	6.67	↓ -6.0bps	101.74	6.677	6.743	101.37	101.73	4-May-26	101.00	935.77	56
FR0065	30-Aug-12	15-May-33	6.63	7.0	5.38	6.60	↑ 6.9bps	100.16	6.629	6.816	98.94	99.73	4-May-26	100.50	102.53	53
FR0100	24-Aug-23	15-Feb-34	6.63	7.8	5.91	6.79	↓ -2.2bps	99.02	6.686	6.837	98.73	99.62	4-May-26	99.13	515.41	148
FR0068	1-Aug-13	15-Mar-34	8.38	7.9	5.76	6.81	↓ -1.3bps	109.38	6.719	6.867	109.03	109.97	4-May-26	110.00	1.24	17
FR0080	4-Jul-19	15-Jun-35	7.50	9.1	6.63	6.79	↓ -1.9bps	104.76	6.701	6.837	104.43	105.37	4-May-26	105.55	151.92	72
FR0103	29-Jul-25	15-Jul-35	6.75	9.2	6.63	6.81	↓ -4.2bps	99.60	6.691	6.878	99.12	100.39	4-May-26	99.90	2,027.45	91
<b>FR0108</b>	<b>31-Jul-25</b>	<b>15-Apr-36</b>	<b>6.50</b>	<b>9.9</b>	<b>7.18</b>	<b>6.78</b>	<b>↓ -5.9bps</b>	<b>98.03</b>	<b>6.632</b>	<b>6.818</b>	<b>97.72</b>	<b>99.05</b>	<b>4-May-26</b>	<b>99.50</b>	<b>1,303.68</b>	<b>322</b>
FR0072	9-Jul-15	15-May-36	8.25	10.0	6.70	6.83	↓ -3.0bps	110.17	6.711	6.841	110.10	111.10	4-May-26	111.00	128.65	26
FR0088	7-Jan-21	15-Jun-36	6.25	10.1	7.17	6.74	↓ -3.2bps	96.42	6.613	6.793	96.06	97.35	4-May-26	97.90	68.24	63
FR0045	24-May-07	15-May-37	9.75	11.0	6.91	6.80	↓ -0.2bps	122.65	6.810	6.997	120.91	122.54	20-Apr-26	124.50	1.20	1
FR0093	6-Jan-22	15-Jul-37	6.38	11.2	7.71	6.74	→ 0.0bps	97.15	6.642	6.783	96.82	97.90	4-May-26	98.10	10.99	36
FR0075	10-Aug-17	15-May-38	7.50	12.0	7.71	6.86	↑ 1.5bps	105.17	6.751	6.875	105.06	106.10	4-May-26	104.75	12.71	32
FR0098	15-Sep-22	15-Jun-38	7.13	12.1	7.87	6.84	→ 0.0bps	102.31	6.733	6.853	102.20	103.20	4-May-26	102.35	717.46	50
FR0050	24-Jan-08	15-Jul-38	10.50	12.2	7.43	6.47	→ 0.0bps	133.60	6.457	6.614	132.17	133.75	28-Apr-26	132.40	0.02	2
FR0079	7-Jan-19	15-Apr-39	8.38	12.9	8.13	6.85	↓ -0.6bps	112.92	6.746	6.900	112.49	113.92	4-May-26	112.70	81.10	15
FR0083	7-Nov-19	15-Apr-40	7.50	13.9	8.70	6.86	↓ -0.3bps	105.71	6.741	6.893	105.38	106.79	4-May-26	104.75	3.56	58
<b>FR0106</b>	<b>9-Jan-25</b>	<b>15-Aug-40</b>	<b>7.13</b>	<b>14.3</b>	<b>8.82</b>	<b>6.86</b>	<b>↓ -1.2bps</b>	<b>102.38</b>	<b>6.681</b>	<b>6.867</b>	<b>102.31</b>	<b>104.04</b>	<b>4-May-26</b>	<b>102.40</b>	<b>323.64</b>	<b>50</b>
FR0057	21-Apr-11	15-May-41	9.50	15.0	8.41	6.83	↓ -0.1bps	124.85	6.783	6.877	124.33	125.35	14-Apr-26	126.50	5.25	2
FR0062	9-Feb-12	15-Apr-42	6.38	15.9	9.73	6.84	↓ -2.3bps	95.49	6.722	6.883	95.12	96.63	4-May-26	96.75	7.49	37
FR0092	8-Jul-21	15-Jun-42	7.13	16.1	9.36	6.80	↑ 1.1bps	103.13	6.678	6.835	102.79	104.36	4-May-26	101.30	20.62	40
FR0097	19-Aug-22	15-Jun-43	7.13	17.1	9.70	6.75	↓ -0.6bps	103.81	6.636	6.823	103.01	104.94	4-May-26	103.80	833.40	57
FR0067	18-Jul-13	15-Feb-44	8.75	17.8	9.54	6.89	↓ -1.5bps	118.85	6.732	6.919	118.55	120.72	28-Apr-26	118.80	2.46	2
<b>FR0107</b>	<b>9-Jan-25</b>	<b>15-Aug-45</b>	<b>7.13</b>	<b>19.3</b>	<b>10.41</b>	<b>6.78</b>	<b>↓ -1.2bps</b>	<b>103.66</b>	<b>6.598</b>	<b>6.784</b>	<b>103.62</b>	<b>105.69</b>	<b>4-May-26</b>	<b>103.75</b>	<b>802.18</b>	<b>37</b>
FR0076	22-Sep-17	15-May-48	7.38	22.0	10.76	6.88	↓ -0.4bps	105.62	6.758	6.929	105.00	107.02	4-May-26	105.45	80.55	67
FR0089	7-Jan-21	15-Aug-51	6.88	25.3	11.74	6.87	→ 0.0bps	100.02	6.749	6.925	99.39	101.50	4-May-26	98.30	40.97	137
FR0102	5-Jan-24	15-Jul-54	6.88	28.2	12.12	6.89	↑ 0.2bps	99.82	6.713	6.899	99.69	102.03	4-May-26	98.90	805.47	214
FR0105	27-Aug-24	15-Jul-64	6.88	38.2	13.20	6.85	↑ 0.7bps	100.27	6.694	6.881	99.90	102.47	14-Apr-25	99.00	0.10	1
ORI024T6	8-Nov-23	15-Oct-29	6.35	3.4	-	6.28	↑ 0.2bps	100.23	6.420	6.607	99.21	99.78	4-May-26	100.90	2.33	16
ORI025T6	28-Feb-24	15-Feb-30	6.40	3.8	-	6.35	↑ 2.3bps	100.17	6.438	6.625	99.25	99.87	4-May-26	98.75	0.98	17
ORI026T6	30-Oct-24	15-Oct-30	6.40	4.4	-	6.32	→ 0.0bps	100.30	6.399	6.586	99.29	100.00	4-May-26	98.10	0.73	13
PBS003	2-Feb-12	15-Jan-27	6.00	0.7	0.67	5.77	↓ -1.2bps	100.15	4.939	5.126	100.58	100.71	4-May-26	100.00	811.72	232
PBS020	22-Oct-18	15-Oct-27	9.00	1.4	1.35	5.46	↓ -0.6bps	104.85	5.299	5.486	104.82	105.09	31-Jul-24	108.25	0.50	1
PBS018	4-Jun-18	15-May-28	7.63	2.0	1.81	5.53	↓ -0.3bps	103.96	5.583	5.770	103.50	103.87	3-Sep-19	99.29	2,000.00	2
<b>PBS030</b>	<b>4-Jun-21</b>	<b>15-Jul-28</b>	<b>5.88</b>	<b>2.2</b>	<b>2.00</b>	<b>6.26</b>	<b>↑ 0.9bps</b>	<b>99.21</b>	<b>6.200</b>	<b>6.365</b>	<b>99.00</b>	<b>99.33</b>	<b>4-May-26</b>	<b>99.35</b>	<b>3,116.86</b>	<b>488</b>
PBSG001	22-Sep-22	15-Sep-29	6.63	3.4	2.96	6.18	↓ -2.2bps	101.33	6.158	6.345	100.83	101.39	4-May-26	100.75	0.30	1
IFR0006	1-Apr-10	15-Mar-30	10.25	3.9	3.20	6.04	↑ 3.0bps	114.29	6.247	6.434	112.86	113.54	11-Mar-26	113.43	2.00	2
PBS023	15-May-19	15-May-30	8.13	4.0	3.32	5.92	→ 0.0bps									

PRICE INDEX



YIELD INDEX



TECHNICAL ANALYSIS

FR0109

INDICATORS	4-May-26	-1 Day	Change
Last Price	96.63	96.61	0.02
DI+	13.25	11.65	1.60
DI-	53.35	55.43	(2.08)
ADX (15D)	44.21	43.06	1.14
A/D	-40,660.23	-41,688.15	1,027.92
CMF(20D)	-0.347	-0.369	0.02
CCI	-107.45	-137.09	29.64
Volume (IDR bn)	5,097.42	3,571.58	1,525.84
Frequency	187	223	(36)

COMMENT

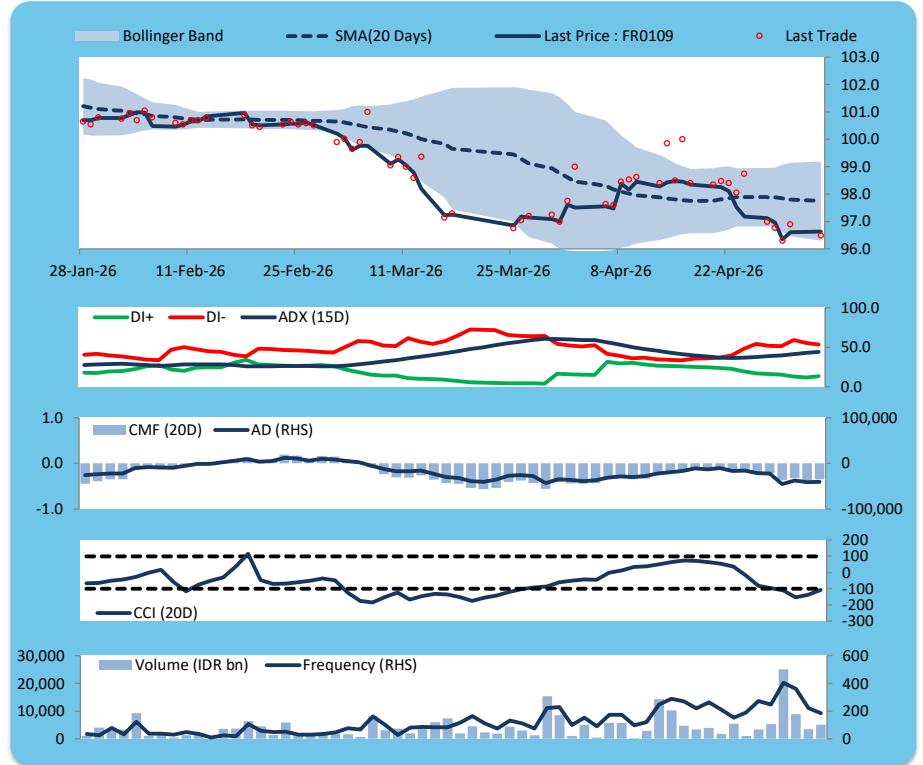
Price increased slightly; heavy trade volume; upward trend continues to weaken; selling pressure eased; CCI increased.

BUY

FEATURES

Issue Date	14-Aug-25
Mature Date	15-Mar-31
Tenor	4.9
Coupon Rate	5.88
Last Yield	6.69
Modified Duration	4.12
Previous Coupon Date	15-Mar-26
Next Coupon Date	15-Sep-26

Sources: Bloomberg (Price); IDX



FR0108

INDICATORS	4-May-26	-1 Day	Change
Last Price	98.03	97.68	0.35
DI+	21.77	16.23	5.54
DI-	45.29	48.62	(3.33)
ADX (15D)	30.58	30.26	0.32
A/D	624.98	1,055.13	(430.15)
CMF(20D)	0.018	0.030	(0.01)
CCI	-85.74	-140.07	54.33
Volume (IDR bn)	1,303.68	2,918.60	(1,614.92)
Frequency	322	372	(50)

COMMENT

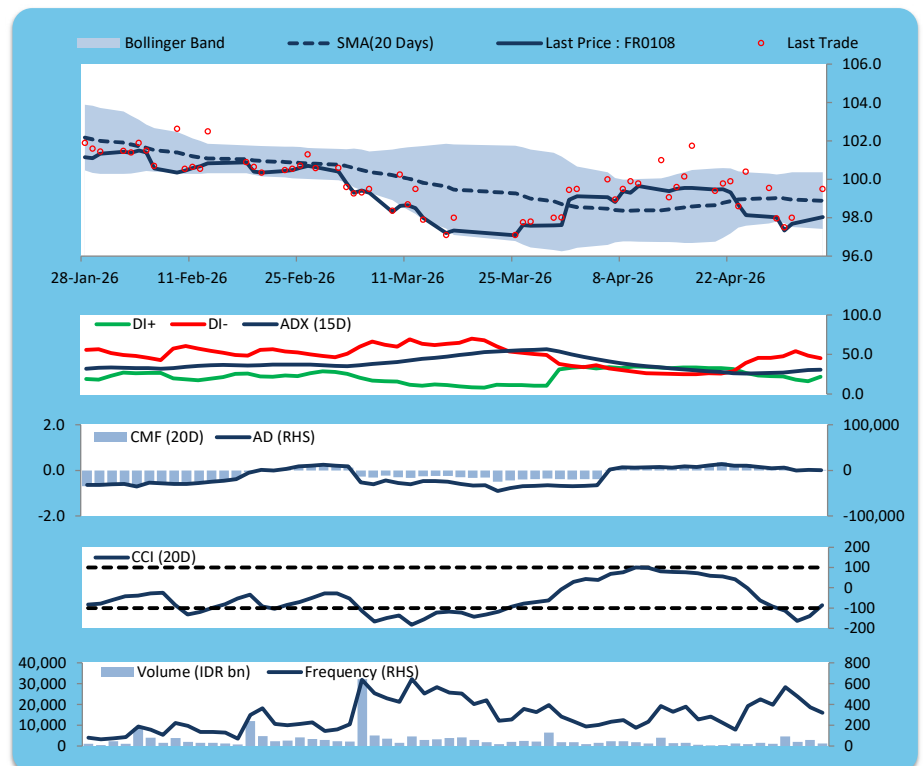
Price increased; heavy trade volume; upward trend continues to weaken; buying pressure eased; CCI increased.

BUY

FEATURES

Issue Date	31-Jul-25
Mature Date	15-Apr-36
Tenor	9.9
Coupon Rate	6.50
Last Yield	6.77
Modified Duration	7.18
Previous Coupon Date	15-Apr-26
Next Coupon Date	15-Oct-26

Sources: Bloomberg (Price); IDX



FR0106

INDICATORS	4-May-26	-1 Day	Change
Last Price	102.38	102.31	0.07
DI+	27.55	22.38	5.18
DI-	51.89	56.05	(4.17)
ADX (15D)	27.45	27.23	0.23
A/D	1,997.11	2,195.23	(198.12)
CMF(20D)	0.182	0.205	(0.02)
CCI	-110.62	-144.62	33.99
Volume (IDR bn)	323.64	476.86	(153.22)
Frequency	50	60	(10)

COMMENT

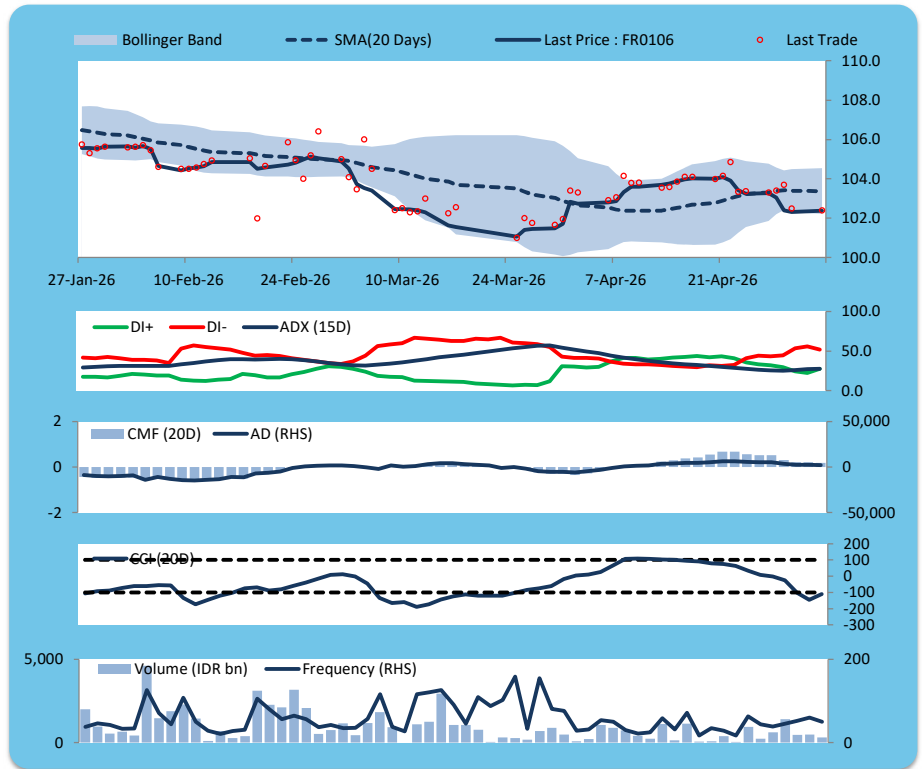
Price increased; moderate trade volume; upward trend continues to strengthen; buying pressure eased; CCI increased.

BUY

FEATURES

Issue Date	9-Jan-25
Mature Date	15-Aug-40
Tenor	14.3
Coupon Rate	7.13
Last Yield	6.86
Modified Duration	8.82
Previous Coupon Date	15-Feb-26
Next Coupon Date	15-Aug-26

Sources: Bloomberg (Price); IDX



FR0107

INDICATORS	4-May-26	-1 Day	Change
Last Price	103.66	103.56	0.09
DI+	27.33	24.52	2.81
DI-	46.74	48.56	(1.82)
ADX (15D)	28.18	28.32	(0.14)
A/D	171.50	234.96	(63.45)
CMF(20D)	0.011	0.017	(0.01)
CCI	-85.17	-96.30	11.13
Volume (IDR bn)	802.18	638.50	163.68
Frequency	37	59	(22)

COMMENT

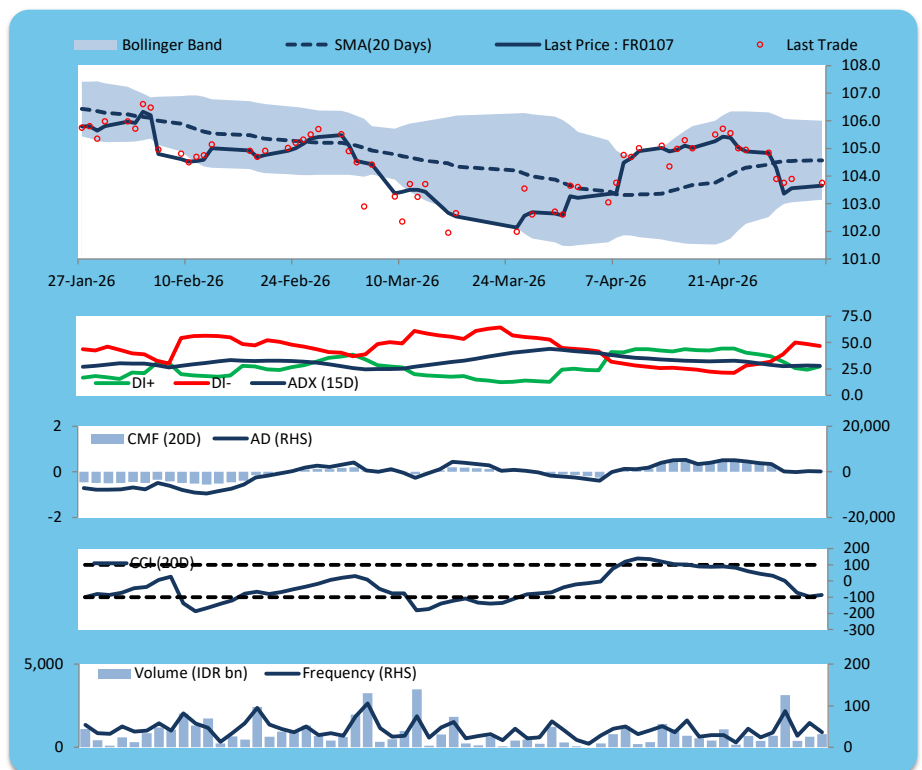
Price increased; heavy trade volume; upward trend continues to weaken; buying pressure eased; CCI increased.

BUY

FEATURES

Issue Date	9-Jan-25
Mature Date	15-Aug-45
Tenor (year)	19.3
Coupon Rate	7.13
Last Yield	6.78
Modified Duration	10.41
Previous Coupon Date	15-Feb-26
Next Coupon Date	15-Aug-26

Sources: Bloomberg (Price); IDX



**ECONOMIC AND FIXED INCOME RESEARCH TEAM****Chief Economist and Head Fixed Income Research**

Helmy Kristanto	helmy.kristanto@brids.co.id	(62-21) 5091 4100 ext. 3400
-----------------	-----------------------------	-----------------------------

**Economists**

Relindya Yuriswari Salehaningtyas	relindya.salehaningtyas@brids.co.id	(62-21) 5091 4100 ext. 3609
Ebenezer Mesotuhu Harefa	ebenezer.harefa@brids.co.id	(62-21) 5091 4100 ext. 3609

**Credit Analyst**

Laras Nerpatari Suliyas	laras.nerpatari@brids.co.id	(62-21) 5091 4100 ext. 3403
-------------------------	-----------------------------	-----------------------------

**Production & Database Management**

Eka Nuraini	ekan@brids.co.id	(62-21) 5091 4100 ext. 3407
Faiqul Kurnia Muslim	faiqul.muslim@brids.co.id	(62-21) 5091 4100 ext. 3402

**INSTITUTIONAL DEBT SALES & TRADING TEAM****Head of Debt Capital Market**

Yopi Chandra Wardhani	yopi.wardhani@brids.co.id	(62-21) 5091 4100 ext. 3220
-----------------------	---------------------------	-----------------------------

**Debt Sales**

Rachmat Eko Putranto	rachmat.putranto@brids.co.id	(62-21) 5091 4100 ext. 3218
Rafi Utama Soeriaatmadja	rafi.soeriaatmadja@brids.co.id	(62-21) 5091 4100 ext. 3926
Adzkia Zahra	adzkia.zahra@brids.co.id	(62-21) 5091 4100 ext. 3924

**Debt Brokerage**

Citra Isramij P.	citra.isramij@brids.co.id	(62-21) 5091 4100 ext. 3228
Sisca Emilia	sisca.emilia@brids.co.id	(62-21) 5091 4100 ext. 3921
Deviano Sujitno	deviano.sujitno@brids.co.id	(62-21) 5091 4100 ext. 3925

**DISCLAIMER:** The information contained in this report has been taken from sources which we deem reliable. However, none of P.T. BRI Danareksa Sekuritas and/or its affiliated companies and/or their respective employees and/or agents makes any representation or warranty (express or implied) or accepts any responsibility or liability as to, or in relation to, the accuracy or completeness of the information and opinions contained in this report or as to any information contained in this report or any other such information or opinions remaining unchanged after the issue thereof. We expressly disclaim any responsibility or liability (express or implied) of P.T. BRI Danareksa Sekuritas, its affiliated companies and their respective employees and agents whatsoever and howsoever arising (including, without limitation for any claims, proceedings, action, suits, losses, expenses, damages or costs) which may be brought against or suffered by any person as a result of acting in reliance upon the whole or any part of the contents of this report and neither P.T. BRI Danareksa Sekuritas, its affiliated companies or their respective employees or agents accepts liability for any errors, omissions or mis-statements, negligent or otherwise, in the report and any liability in respect of the report or any inaccuracy therein or omission therefrom which might otherwise arise is hereby expressly disclaimed. The information contained in this report is not to be taken as any recommendation made by P.T. BRI Danareksa Sekuritas or any other person to enter into any agreement with regard to any investment mentioned in this document. This report is prepared for general circulation. It does not have regard to the specific person who may receive this report. In considering any investments you should make your own independent assessment and seek your own professional financial and legal advice.