

### MOST ACTIVE GOVERNMENT BONDS

Bond	Coupon	Maturity	Last Price	Yield	Volume (IDR bn)
FR0109	5.875	15-Mar-31	96.30	6.761	8,961.90
PBS032	4.875	15-Jul-26	99.98	5.205	3,398.15
FR0101	6.875	15-Apr-29	101.65	6.443	2,484.25
PBS003	6.000	15-Jan-27	100.00	5.630	2,182.99
FR0108	6.500	15-Apr-36	97.50	6.874	2,044.65
PBSG001	6.625	15-Sep-29	100.68	6.199	1,800.00
FR0100	6.625	15-Feb-34	98.50	6.815	1,655.34
FR0103	6.750	15-Jul-35	99.15	6.867	1,580.52
FR0096	7.000	15-Feb-33	100.50	6.702	1,406.11
FR0090	5.125	15-Apr-27	98.95	6.018	808.05

\*Current yield; Coupon, Last Price & Yield are in %; Volume is in IDR bn; Rating code: id(Pefindo) & idn (Fitch Indonesia)

Sources: Bloomberg; Indonesia Stock Exchange (Volume)

### MOST ACTIVE CORPORATE BONDS

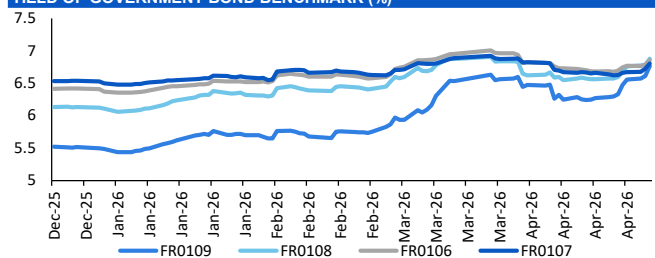
Bond	Rating	Coupon	Maturity	Last Price	Yield	Volume
TRIM01BCN1	A	9.250	6-Jul-26	100.48	9.21	572.68
BBKP02ACN2	AAA	6.450	9-Sep-26	100.31	6.43	434.90
BOLD03B	A+	8.000	10-Oct-28	97.01	9.38	395.00
WISL02B	A	8.000	8-Aug-26	100.31	7.98	336.00
SMOPPM02ACN1	A+	10.000	25-Mar-28	100.82	9.52	225.00
PIDL01CCN2	A+	10.500	30-Apr-30	108.00	8.14	216.20
PPGD06ACN4	AAA	5.250	23-Nov-26	99.60	5.27	202.00
SMWIKAA02ACN2	A	6.500	18-Feb-25	90.00	-	179.14
PIDL01CN3	A+	10.250	27-Aug-30	99.26	10.46	175.00
SMLPPI02BCN2	A	7.250	24-Feb-31	100.01	7.25	165.00

### SOVEREIGN BOND YIELDS

Country	Tenor	Coupon (%)	MA LTM as of			Spread over UST YC (bps)		
			29-Apr-26	29-Mar	29-Feb	29-Apr-26	Mar	Feb
United States	2yr		3.88	3.82	3.38			
USD	5yr		3.99	3.94	3.50			
	10yr		4.36	4.32	3.95			
German	2yr	0.25	2.68	2.62	2.00	-117	-118	-138
EUR	5yr	1.00	2.80	2.73	2.24	-120	-122	-126
	10yr	1.75	3.08	3.00	2.64	-128	-132	-130
Indonesia	2yr	3.50	4.17	4.48	3.91	32	68	53
USD	5yr	3.85	4.54	4.91	4.21	55	97	71
	10yr	6.63	5.32	5.57	5.04	96	125	110
Brazil	2yr	0.00	13.63	13.74	-	978	994	-
BRL	3yr	0.00	13.68	13.84	12.86	983	1,004	948
	10yr	10.00	13.81	14.02	13.56	996	1,022	1,018
Philippines	2yr	6.00	5.26	5.47	5.00	141	167	162
PHP	5yr	7.88	6.73	6.77	5.58	274	282	207
	10yr	11.38	7.08	7.08	5.91	272	276	197
Thailand	2yr	3.13	1.22	1.45	1.06	-263	-235	-232
THB	5yr	3.45	1.59	1.73	1.17	-240	-222	-233
	10yr	3.63	2.16	2.26	1.73	-220	-207	-222
India	2yr	7.59	6.25	6.42	5.68	240	262	230
INR	5yr	7.28	6.76	6.76	6.40	277	282	290
	10yr	8.83	7.00	7.03	6.68	264	271	273
Malaysia	3yr	3.17	3.19	3.28	3.04	-68	-54	-34
MYR	5yr	3.26	3.34	3.44	3.33	-65	-50	-17
	10yr	4.18	3.56	3.64	3.50	-81	-68	-44

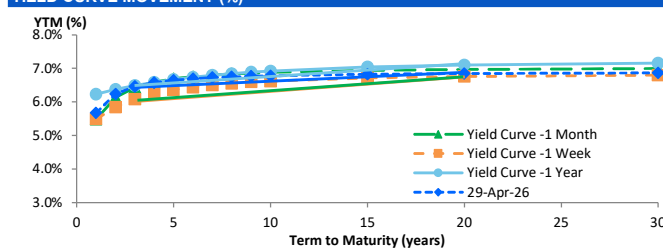
Sources: Bloomberg (Current Yield Curve), US Treasury

### YIELD OF GOVERNMENT BOND BENCHMARK (%)



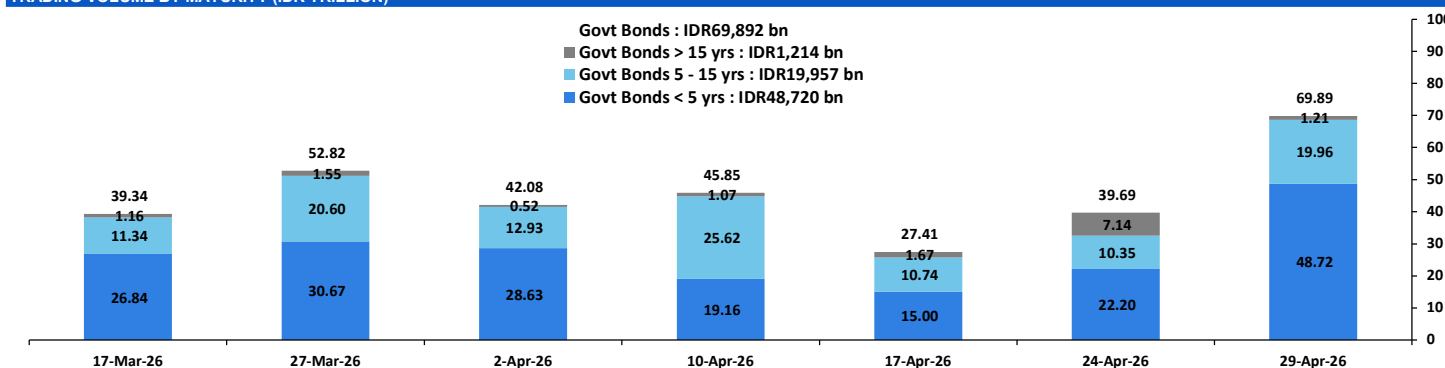
Source: Bloomberg

### YIELD CURVE MOVEMENT (%)



Source: Bloomberg

### TRADING VOLUME BY MATURITY (IDR TRILLION)



Sources: Indonesia Stock Exchange

### CURRENCY

Price	29-Apr-26	-1 Day	-1 Week	-1 Month	EoP2025
DXY	98.73	98.64	98.59	100.15	98.32
USD/IDR	17,290	17,225	17,175	16,965	16,690
EUR/USD	1.17	1.17	1.17	1.15	1.17
USD/JPY	159.78	159.62	159.48	160.31	156.71
USD/CNY	6.834	6.838	6.829	6.911	6.988
USD/MYR	3.951	3.953	3.953	4.011	4.060
SGD/IDR	13,558	13,509	13,497	13,191	12,969

Source: Bloomberg

### COMMODITY

Price	29-Apr-26	-1 Day	-1 Week	-1 Month	EoP2025
CPO (Palm Oil)	4,495	4,465	4,549	4,540	3,998
Coal	131.25	132.25	132.80	135.60	107.50
Gold (XAU/USD)	4,574	4,597	4,740	4,494	4,319
Nickel	19,306	18,957	18,322	17,034	16,546
Copper	594.10	591.75	612.85	546.70	568.20
Brent	114.72	111.26	101.91	112.57	60.85
WTI	103.46	99.93	92.96	99.64	57.42

### PHEI FAIR SPREAD

	1Y	2Y	3Y	4Y	5Y	6Y	7Y	8Y	9Y	10Y
AAA	38	43	47	51	55	59	62	64	66	68
AA+	44	47	50	53	56	60	62	64	66	67
AA	63	65	67	70	73	76	79	80	81	81
AA-	104	106	108	112	116	120	122	123	123	123
A+	158	162	165	172	178	183	185	186	186	186
A	214	223	229	238	248	254	258	260	260	260
A-	261	278	289	302	315	325	331	334	335	336
BBB+	302	329	345	363	380	393	402	408	411	412
BBB	339	376	400	422	444	461	473	481	486	489

\*interpolated, as of April 29, 2026 (bps)

Sources: PHEI, Bloomberg

### SBN HOLDING - (IDR tn)

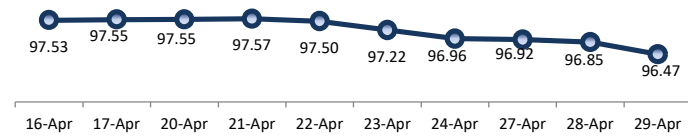
	24-Apr-2026	WoW	Mtd	YTD
Banks	1,336.9	12.3	(48.5)	8.2
Bank Indonesia (exclude repo)	1,690.1	(20.4)	1.3	48.4
Non-Banks:				
Mutual Fund	260.9	(0.1)	(0.7)	18.0
Insurance & Pension Fund	1,357.9	2.9	5.5	67.2
Foreign Investor	858.7	0.0	5.1	(20.0)
Individual	549.4	19.1	17.2	12.0
Others	708.4	13.5	11.3	59.5
<b>Total</b>	<b>6,762.1</b>	<b>27.5</b>	<b>(8.8)</b>	<b>193.3</b>
Domestic Investor	4,213.4	47.8	(15.2)	164.9
Foreign Investor	858.7	0.0	5.1	(20.0)
Bank Indonesia (include repo)	1,701.0	(0.2)	9.8	60.4

Source: DJPPR (Processed)

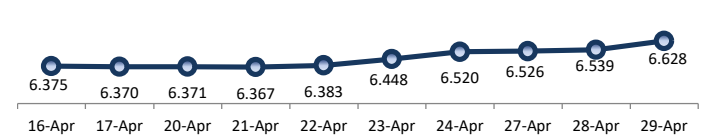
VALUATIONS OF GOVERNMENT BONDS

Bond	Issue Date	Mature Date	Coupon	TTM	Modified Duration	YTM (Change)	Prev Closing Price	Fair Yield Range		Fair Price Range		Last Trade			
												Date	Price	Vol (IDR bn)	Freq
FR0056	23-Sep-10	15-Sep-26	8.38	0.4	0.37	5.44 <span style="color: green;">↑ 3.8bps</span>	101.03	4.800	4.989	101.24	101.31	29-Apr-26	101.45	54.58	20
FR0090	8-Jul-21	15-Apr-27	5.13	1.0	0.92	6.02 <span style="color: green;">↑ 25.6bps</span>	99.19	5.630	5.819	99.36	99.53	29-Apr-26	98.95	808.05	112
FR0059	15-Sep-11	15-May-27	7.00	1.0	0.97	6.08 <span style="color: green;">↑ 13.0bps</span>	100.90	5.742	5.931	101.06	101.25	29-Apr-26	101.30	470.70	48
FR0042	25-Jan-07	15-Jul-27	10.25	1.2	1.11	6.07 <span style="color: green;">↑ 17.0bps</span>	104.75	5.901	6.090	104.77	105.00	21-Apr-26	103.06	0.00	1
FR0094	4-Mar-22	15-Jan-28	5.60	1.7	1.58	6.01 <span style="color: green;">↑ 0.8bps</span>	99.34	5.827	6.016	99.32	99.63	16-Mar-26	98.95	1.90	1
FR0047	30-Aug-07	15-Feb-28	10.00	1.8	1.62	6.19 <span style="color: green;">↑ 9.3bps</span>	106.33	6.156	6.345	106.10	106.43	29-Apr-26	106.30	0.00	1
FR0064	13-Aug-12	15-May-28	6.13	2.0	1.84	6.25 <span style="color: green;">↑ 18.3bps</span>	99.77	6.141	6.301	99.66	99.97	29-Apr-26	99.40	520.65	18
FR0095	19-Aug-22	15-Aug-28	6.38	2.3	2.08	6.23 <span style="color: green;">↑ 16.6bps</span>	100.29	6.178	6.339	100.06	100.40	29-Apr-26	98.90	3.53	11
FR0099	27-Jan-23	15-Jan-29	6.40	2.7	2.41	6.42 <span style="color: green;">↓ -1.8bps</span>	99.95	6.584	6.772	99.08	99.54	1-Jul-25	99.50	49.05	2
FR0071	12-Sep-13	15-Mar-29	9.00	2.9	2.50	6.42 <span style="color: green;">↑ 13.0bps</span>	106.64	6.324	6.461	106.56	106.93	29-Apr-26	105.50	6.34	5
FR0101	2-Nov-23	15-Apr-29	6.88	3.0	2.64	6.44 <span style="color: green;">↑ 14.5bps</span>	101.14	6.337	6.493	101.01	101.43	29-Apr-26	101.65	2,484.25	59
FR0078	27-Sep-18	15-May-29	8.25	3.0	2.58	6.46 <span style="color: green;">↑ 12.0bps</span>	104.86	6.350	6.523	104.69	105.18	29-Apr-26	106.00	1.25	10
FR0104	22-Aug-24	15-Jul-30	6.50	4.2	3.57	6.67 <span style="color: green;">↑ 13.4bps</span>	99.39	6.482	6.661	99.40	100.05	29-Apr-26	99.30	141.40	33
FR0052	20-Aug-09	15-Aug-30	10.50	4.3	3.45	6.47 <span style="color: green;">↑ 4.6bps</span>	114.84	6.507	6.696	113.99	114.75	28-Apr-26	114.60	0.07	4
FR0082	1-Aug-19	15-Sep-30	7.00	4.4	3.70	6.55 <span style="color: green;">↑ 9.2bps</span>	101.69	6.471	6.660	101.26	101.98	29-Apr-26	100.65	319.73	27
FRSDG001	27-Oct-22	15-Oct-30	7.38	4.5	3.77	6.12 <span style="color: green;">↓ -10.7bps</span>	104.81	5.815	6.003	105.30	106.05	23-Apr-26	104.49	7.00	1
FR0087	13-Aug-20	15-Feb-31	6.50	4.8	4.01	6.74 <span style="color: green;">↑ 15.7bps</span>	99.02	6.502	6.691	99.21	99.98	29-Apr-26	99.75	172.08	55
<b>FR0109</b>	<b>15-Aug-25</b>	<b>15-Mar-31</b>	<b>5.88</b>	<b>4.9</b>	<b>4.13</b>	<b>6.76</b>	<b>96.37</b>	<b>6.480</b>	<b>6.669</b>	<b>96.73</b>	<b>97.50</b>	<b>29-Apr-26</b>	<b>96.30</b>	<b>8,961.90</b>	<b>360</b>
FR0085	4-May-20	15-Apr-31	7.75	5.0	4.09	6.52 <span style="color: green;">↑ 1.7bps</span>	105.13	6.555	6.744	104.18	104.99	24-Apr-26	105.55	0.00	1
FR0073	6-Aug-15	15-May-31	8.75	5.0	3.95	6.53 <span style="color: green;">↑ 0.9bps</span>	109.38	6.402	6.591	109.13	109.98	29-Apr-26	108.65	442.91	35
FR0054	22-Jul-10	15-Jul-31	9.50	5.2	4.06	6.59 <span style="color: green;">↑ 1.9bps</span>	112.61	6.590	6.779	111.76	112.64	29-Apr-26	112.70	0.00	1
FR0091	8-Jul-21	15-Apr-32	6.38	6.0	4.87	6.73 <span style="color: green;">↑ 10.6bps</span>	98.27	6.554	6.743	98.21	99.12	29-Apr-26	99.50	194.42	64
FR0058	21-Jul-11	15-Jun-32	8.25	6.1	4.70	6.52 <span style="color: green;">→ 0.0bps</span>	108.59	6.587	6.776	107.28	108.26	29-Apr-26	107.90	1.26	4
FR0074	10-Nov-16	15-Aug-32	7.50	6.3	4.92	6.68 <span style="color: green;">↑ 8.5bps</span>	104.12	6.614	6.739	103.84	104.49	29-Apr-26	104.40	3.27	3
FR0096	19-Aug-22	15-Feb-33	7.00	6.8	5.29	6.70 <span style="color: green;">↑ 7.2bps</span>	101.59	6.663	6.820	101.50	101.80	29-Apr-26	100.50	1,406.11	48
FR0065	30-Aug-12	15-May-33	6.63	7.0	5.40	6.52 <span style="color: green;">↓ -8.4bps</span>	100.58	6.631	6.720	98.92	99.96	29-Apr-26	101.00	105.36	49
FR0100	24-Aug-23	15-Feb-34	6.63	7.8	5.92	6.82 <span style="color: green;">↑ 8.8bps</span>	98.85	6.659	6.817	98.84	99.78	29-Apr-26	98.50	1,655.34	80
FR0068	1-Aug-13	15-Mar-34	8.38	7.9	5.77	6.84 <span style="color: green;">↑ 10.7bps</span>	109.20	6.690	6.851	109.15	110.18	29-Apr-26	106.93	177.96	23
FR0080	4-Jul-19	15-Jun-35	7.50	9.1	6.44	6.78 <span style="color: green;">↑ 4.2bps</span>	104.86	6.681	6.820	104.56	105.52	29-Apr-26	104.20	72.87	40
FR0103	29-Jul-25	15-Jul-35	6.75	9.2	6.64	6.87 <span style="color: green;">↑ 8.2bps</span>	99.20	6.666	6.855	99.28	100.56	29-Apr-26	99.15	1,580.52	181
<b>FR0108</b>	<b>31-Jul-25</b>	<b>15-Apr-36</b>	<b>6.50</b>	<b>10.0</b>	<b>7.18</b>	<b>6.87</b>	<b>97.33</b>	<b>6.602</b>	<b>6.791</b>	<b>97.92</b>	<b>99.26</b>	<b>29-Apr-26</b>	<b>97.50</b>	<b>2,044.65</b>	<b>474</b>
FR0072	9-Jul-15	15-May-36	8.25	10.0	6.72	6.79 <span style="color: green;">↑ 1.6bps</span>	110.46	6.705	6.815	110.31	111.15	29-Apr-26	109.35	62.66	6
FR0088	7-Jan-21	15-Jun-36	6.25	10.1	7.21	6.57 <span style="color: green;">↓ -0.4bps</span>	97.64	6.605	6.776	96.18	97.40	29-Apr-26	95.65	30.84	32
FR0045	24-May-07	15-May-37	9.75	11.0	6.92	6.82 <span style="color: green;">↑ 2.6bps</span>	122.42	6.817	7.006	120.85	122.50	20-Apr-26	124.50	1.20	1
FR0093	6-Jan-22	15-Jul-37	6.38	11.2	7.72	6.76 <span style="color: green;">↑ 5.8bps</span>	96.97	6.630	6.776	96.87	98.00	29-Apr-26	97.75	2.33	13
FR0075	10-Aug-17	15-May-38	7.50	12.0	7.72	6.85 <span style="color: green;">↑ 6.2bps</span>	105.29	6.744	6.865	105.14	106.17	29-Apr-26	102.20	60.00	9
FR0098	15-Sep-22	15-Jun-38	7.13	12.1	7.89	6.81 <span style="color: green;">↑ 5.5bps</span>	102.55	6.729	6.833	102.37	103.23	29-Apr-26	101.75	72.51	18
FR0050	24-Jan-08	15-Jul-38	10.50	12.2	7.44	6.47 <span style="color: green;">↓ -0.3bps</span>	133.60	6.453	6.604	132.29	133.82	28-Apr-26	132.40	0.02	2
FR0079	7-Jan-19	15-Apr-39	8.38	13.0	8.14	6.87 <span style="color: green;">↑ 6.1bps</span>	112.73	6.738	6.890	112.59	114.00	29-Apr-26	112.00	17.81	9
FR0083	7-Nov-19	15-Apr-40	7.50	14.0	8.71	6.86 <span style="color: green;">↑ 4.3bps</span>	105.68	6.736	6.881	105.49	106.84	29-Apr-26	105.15	5.33	23
<b>FR0106</b>	<b>9-Jan-25</b>	<b>15-Aug-40</b>	<b>7.13</b>	<b>14.3</b>	<b>8.83</b>	<b>6.85</b>	<b>102.46</b>	<b>6.667</b>	<b>6.849</b>	<b>102.48</b>	<b>104.17</b>	<b>29-Apr-26</b>	<b>103.70</b>	<b>464.15</b>	<b>52</b>
FR0057	21-Apr-11	15-May-41	9.50	15.0	8.43	6.82 <span style="color: green;">↑ 0.8bps</span>	125.00	6.776	6.871	124.40	125.44	14-Apr-26	126.50	5.25	2
FR0062	9-Feb-12	15-Apr-42	6.38	16.0	9.73	6.88 <span style="color: green;">↑ 9.5bps</span>	95.19	6.720	6.870	95.25	96.65	29-Apr-26	93.75	3.24	11
FR0092	8-Jul-21	15-Jun-42	7.13	16.1	9.38	6.77 <span style="color: green;">↑ 6.2bps</span>	103.41	6.664	6.853	102.62	104.51	29-Apr-26	102.25	5.45	15
FR0097	19-Aug-22	15-Jun-43	7.13	17.1	9.70	6.76 <span style="color: green;">↑ 4.9bps</span>	103.71	6.639	6.828	102.96	104.91	29-Apr-26	101.24	161.80	24
FR0067	18-Jul-13	15-Feb-44	8.75	17.8	9.54	6.92 <span style="color: green;">↑ 12.3bps</span>	118.52	6.725	6.914	118.62	120.81	28-Apr-26	118.80	2.46	2
<b>FR0107</b>	<b>9-Jan-25</b>	<b>15-Aug-45</b>	<b>7.13</b>	<b>19.3</b>	<b>10.41</b>	<b>6.81</b>	<b>103.40</b>	<b>6.590</b>	<b>6.779</b>	<b>103.68</b>	<b>105.78</b>	<b>29-Apr-26</b>	<b>103.75</b>	<b>393.48</b>	<b>28</b>
FR0076	22-Sep-17	15-May-48	7.38	22.0	10.77	6.88 <span style="color: green;">↑ 1.9bps</span>	105.56	6.755	6.921	105.09	107.06	29-Apr-26	106.95	10.71	52
FR0089	7-Jan-21	15-Aug-51	6.88	25.3	11.76	6.86 <span style="color: green;">↑ 1.0bps</span>	100.11	6.748	6.918	99.48	101.52	29-Apr-26	96.60	12.07	41
FR0102	5-Jan-24	15-Jul-54	6.88	28.2	12.14	6.88 <span style="color: green;">↑ 4.2bps</span>	99.91	6.700	6.889	99.81	102.19	29-Apr-26	99.00	117.00	77
FR0105	27-Aug-24	15-Jul-64	6.88	38.2	13.22	6.85 <span style="color: green;">↑ 1.6bps</span>	100.27	6.683	6.871	100.03	102.63	14-Apr-25	99.00	0.10	1
ORI024T6	8-Nov-23	15-Oct-29	6.35	3.5	-	6.30 <span style="color: green;">→ 0.0bps</span>	100.16	6.436	6.625	99.15	99.73	29-Apr-26	98.85	1.67	3
ORI025T6	28-Feb-24	15-Feb-30	6.40	3.8	-	6.33 <span style="color: green;">→ 0.0bps</span>	100.25	6.476	6.665	99.11	99.74	29-Apr-26	100.00	3.15	15
ORI026T6	30-Oct-24	15-Oct-30	6.40	4.5	-	6.32 <span style="color: green;">↑ 0.5bps</span>	100.29	6.370	6.559	99.39	100.11	29-Apr-26	98.80	11.10	9
PBS003	2-Feb-12	15-Jan-27	6.00	0.7	0.68	5.63 <span style="color: green;">↑ 3.5bps</span>	100.24	4.788	4.977	100.70	100.83	29-Apr-26	100.00	2,182.99	111
PBS020	22-Oct-18	15-Oct-27	9.00	1.5	1.36	5.44 <span style="color: green;">↓ -2.3bps</span>	104.89	5.190	5.379	105.02	105.29	31-Jul-24	108.25	0.50	1
PBS018	4-Jun-18	15-May-28	7.63	2.0	1.82	5.61 <span style="color: green;">↓ -0.7bps</span>	103.82	5.491	5.680	103.70	104.07	3-Sep-19	99.29	2,000.00	2
<b>PBS030</b>	<b>4-Jun-21</b>	<b>15-Jul-28</b>	<b>5.88</b>	<b>2.2</b>	<b>2.01</b>	<b>6.14</b>	<b>99.44</b>	<b>6.066</b>	<b>6.255</b>	<b>99.22</b>	<b>99.60</b>	<b>29-Apr-26</b>	<b>100.00</b>	<b>327.18</b>	<b>160</b>
PBSG001	22-Sep-22	15-Sep-29	6.63	3.4	2.97	6.20 <span style="color: green;">↑ 2.5bps</span>	101.27	6.054	6.243	101.14	101.71	29-Apr-26	100.68	1,800.00	12
IFR0006	1-Apr-10	15-Mar-30	10.25	3.9	3.21	6.03									

PRICE INDEX



YIELD INDEX



TECHNICAL ANALYSIS

FR0109

INDICATORS	29-Apr-26	-1 Day	Change
Last Price	96.37	96.96	(0.59)
DI+	12.99	15.59	(2.60)
DI-	59.47	51.58	7.89
ADX (15D)	41.48	39.86	1.62
A/D	-37,340.89	-45,509.21	8,168.32
CMF(20D)	-0.316	-0.365	0.05
CCI	-152.15	-108.91	(43.24)
Volume (IDR bn)	8,961.90	25,100.20	(16,138.30)
Frequency	360	404	(44)

COMMENT

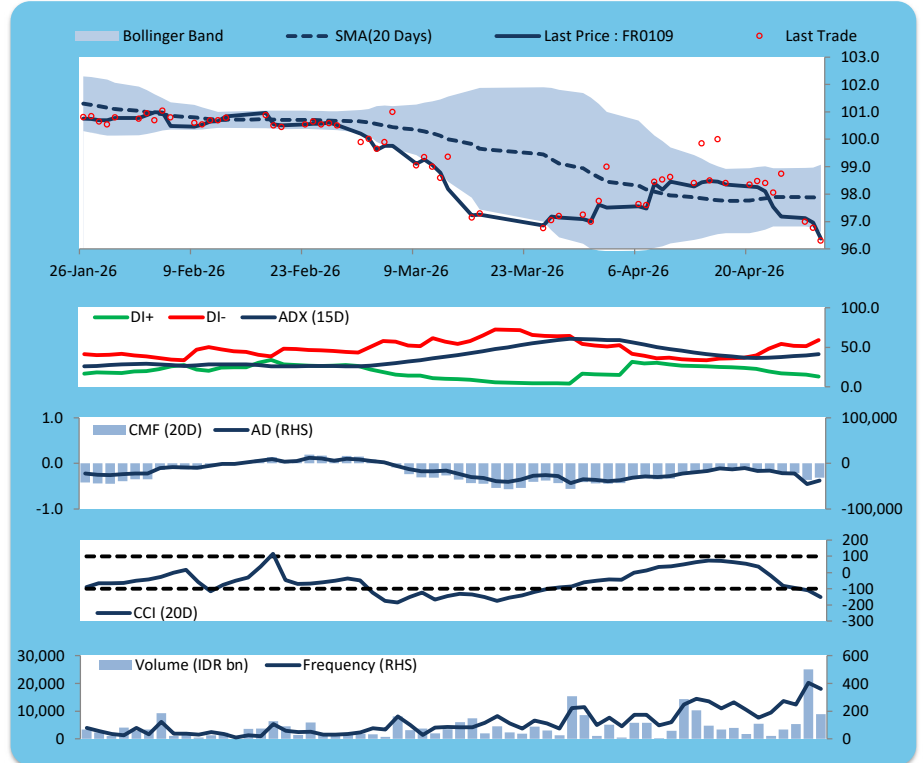
Price declined; heavy trade volume; downward trend continues to weaken; selling pressure eased; CCI declined.

SELL

FEATURES

Issue Date	14-Aug-25
Mature Date	15-Mar-31
Tenor	4.9
Coupon Rate	5.88
Last Yield	6.76
Modified Duration	4.13
Previous Coupon Date	15-Mar-26
Next Coupon Date	15-Sep-26

Sources: Bloomberg (Price); IDX



FR0108

INDICATORS	29-Apr-26	-1 Day	Change
Last Price	97.33	98.03	(0.70)
DI+	18.10	21.97	(3.88)
DI-	54.22	47.75	6.46
ADX (15D)	28.85	27.35	1.51
A/D	188.14	6,625.53	(6,437.39)
CMF(20D)	0.006	0.173	(0.17)
CCI	-163.75	-113.06	(50.69)
Volume (IDR bn)	2,044.65	4,613.71	(2,569.05)
Frequency	474	568	(94)

COMMENT

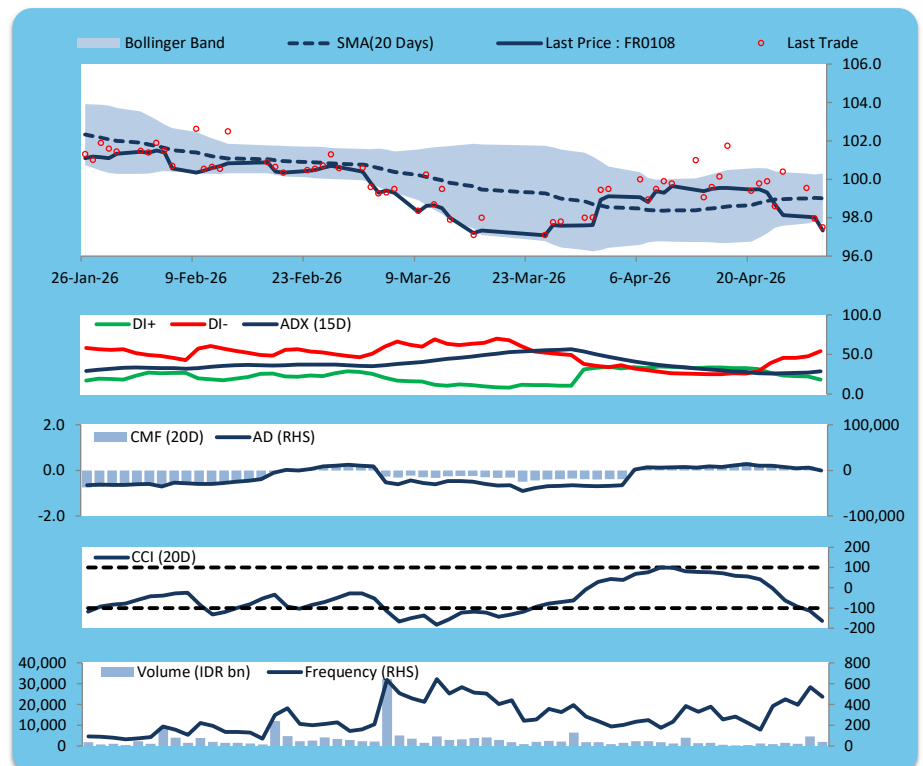
Price declined; heavy trade volume; downward trend continues to weaken; buying pressure eased; CCI declined.

SELL

FEATURES

Issue Date	31-Jul-25
Mature Date	15-Apr-36
Tenor	10.0
Coupon Rate	6.50
Last Yield	6.87
Modified Duration	7.18
Previous Coupon Date	15-Apr-26
Next Coupon Date	15-Oct-26

Sources: Bloomberg (Price); IDX



FR0106

INDICATORS	29-Apr-26	-1 Day	Change
Last Price	102.47	103.04	(0.57)
DI+	25.16	29.84	(4.68)
DI-	51.87	44.62	7.25
ADX (15D)	25.95	25.33	0.62
A/D	2,221.46	3,429.67	(1,208.21)
CMF(20D)	0.207	0.307	(0.10)
CCI	-97.05	-26.27	(70.78)
Volume (IDR bn)	464.15	1,412.41	(948.26)
Frequency	52	45	7

COMMENT

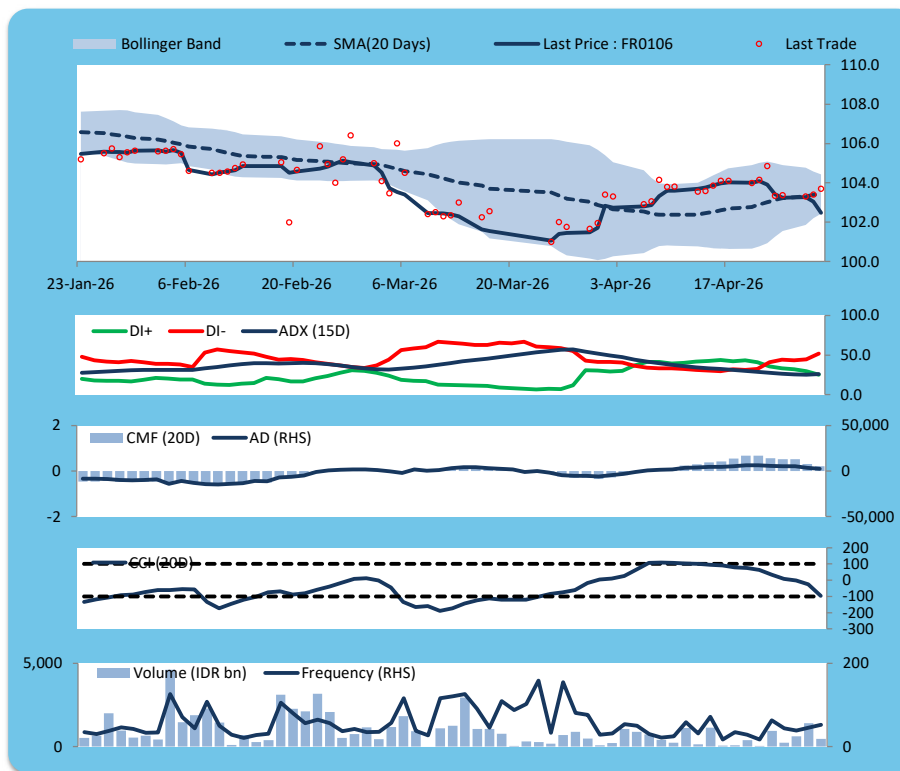
Price declined; moderate trade volume; downward trend continues to strengthen; buying pressure eased; CCI declined.

SELL

FEATURES

Issue Date	9-Jan-25
Mature Date	15-Aug-40
Tenor	14.3
Coupon Rate	7.13
Last Yield	6.85
Modified Duration	8.83
Previous Coupon Date	15-Feb-26
Next Coupon Date	15-Aug-26

Sources: Bloomberg (Price); IDX



FR0107

INDICATORS	29-Apr-26	-1 Day	Change
Last Price	103.45	104.29	(0.84)
DI+	26.33	32.04	(5.71)
DI-	49.14	39.07	10.07
ADX (15D)	27.89	27.72	0.17
A/D	-111.98	220.55	(332.53)
CMF(20D)	-0.008	0.015	(0.02)
CCI	-67.72	0.86	(68.58)
Volume (IDR bn)	393.48	3,131.62	(2,738.14)
Frequency	28	87	(59)

COMMENT

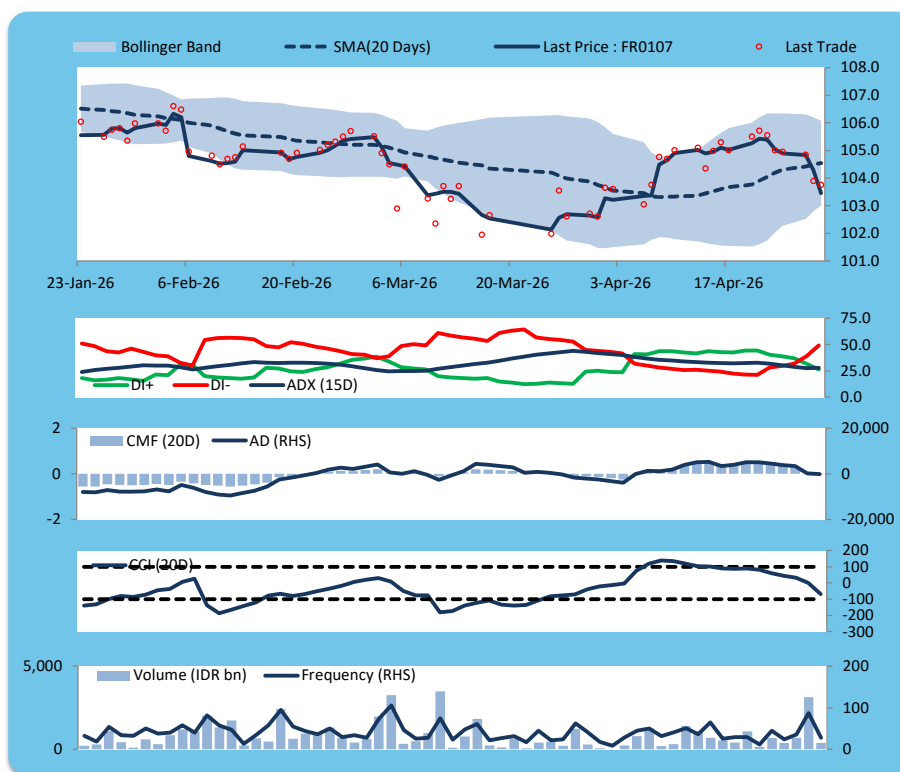
Price declined; moderate trade volume; downward trend continues to strengthen; selling pressure increased; CCI declined.

SELL

FEATURES

Issue Date	9-Jan-25
Mature Date	15-Aug-45
Tenor (year)	19.3
Coupon Rate	7.13
Last Yield	6.80
Modified Duration	10.42
Previous Coupon Date	15-Feb-26
Next Coupon Date	15-Aug-26

Sources: Bloomberg (Price); IDX



**ECONOMIC AND FIXED INCOME RESEARCH TEAM****Chief Economist and Head Fixed Income Research**

Helmy Kristanto	helmy.kristanto@brids.co.id	(62-21) 5091 4100 ext. 3400
-----------------	-----------------------------	-----------------------------

**Economists**

Relindya Yuriswari Salehaningtyas	relindya.salehaningtyas@brids.co.id	(62-21) 5091 4100 ext. 3609
Ebenezer Mesotuhu Harefa	ebenezer.harefa@brids.co.id	(62-21) 5091 4100 ext. 3609

**Credit Analyst**

Laras Nerpatari Suliyas	laras.nerpatari@brids.co.id	(62-21) 5091 4100 ext. 3403
-------------------------	-----------------------------	-----------------------------

**Production & Database Management**

Eka Nuraini	ekan@brids.co.id	(62-21) 5091 4100 ext. 3407
Faiqul Kurnia Muslim	faiqul.muslim@brids.co.id	(62-21) 5091 4100 ext. 3402

**INSTITUTIONAL DEBT SALES & TRADING TEAM****Head of Debt Capital Market**

Yopi Chandra Wardhani	yopi.wardhani@brids.co.id	(62-21) 5091 4100 ext. 3220
-----------------------	---------------------------	-----------------------------

**Debt Sales**

Rachmat Eko Putranto	rachmat.putranto@brids.co.id	(62-21) 5091 4100 ext. 3218
Rafi Hutama Soeriaatmadja	rafi.soeriaatmadja@brids.co.id	(62-21) 5091 4100 ext. 3926
Adzkia Zahra	adzkia.zahra@brids.co.id	(62-21) 5091 4100 ext. 3924

**Debt Brokerage**

Citra Isramij P.	citra.isramij@brids.co.id	(62-21) 5091 4100 ext. 3228
Sisca Emilia	sisca.emilia@brids.co.id	(62-21) 5091 4100 ext. 3921
Deviano Sujitno	deviano.sujitno@brids.co.id	(62-21) 5091 4100 ext. 3925

**DISCLAIMER:** The information contained in this report has been taken from sources which we deem reliable. However, none of P.T. BRI Danareksa Sekuritas and/or its affiliated companies and/or their respective employees and/or agents makes any representation or warranty (express or implied) or accepts any responsibility or liability as to, or in relation to, the accuracy or completeness of the information and opinions contained in this report or as to any information contained in this report or any other such information or opinions remaining unchanged after the issue thereof. We expressly disclaim any responsibility or liability (express or implied) of P.T. BRI Danareksa Sekuritas, its affiliated companies and their respective employees and agents whatsoever and howsoever arising (including, without limitation for any claims, proceedings, action, suits, losses, expenses, damages or costs) which may be brought against or suffered by any person as a result of acting in reliance upon the whole or any part of the contents of this report and neither P.T. BRI Danareksa Sekuritas, its affiliated companies or their respective employees or agents accepts liability for any errors, omissions or mis-statements, negligent or otherwise, in the report and any liability in respect of the report or any inaccuracy therein or omission therefrom which might otherwise arise is hereby expressly disclaimed. The information contained in this report is not to be taken as any recommendation made by P.T. BRI Danareksa Sekuritas or any other person to enter into any agreement with regard to any investment mentioned in this document. This report is prepared for general circulation. It does not have regard to the specific person who may receive this report. In considering any investments you should make your own independent assessment and seek your own professional financial and legal advice.