

### MOST ACTIVE GOVERNMENT BONDS

Bond	Coupon	Maturity	Last Price	Yield	Volume (IDR bn)
FR0109	5.875	15-Mar-31	96.77	6.611	25,100.20
FR0108	6.500	15-Apr-36	97.96	6.777	4,613.71
FR0107	7.125	15-Aug-45	103.90	6.723	3,131.62
FR0090	5.125	15-Apr-27	99.80	5.762	1,493.49
FR0106	7.125	15-Aug-40	103.40	6.786	1,412.41
FR0101	6.875	15-Apr-29	101.35	6.298	1,206.45
FR0083	7.500	15-Apr-40	106.01	6.818	1,013.40
FR0102	6.875	15-Jul-54	99.80	6.839	992.77
FR0096	7.000	15-Feb-33	101.85	6.630	986.34
PBS003	6.000	15-Jan-27	100.85	5.595	868.24

Coupon, Last Price & Yield are in %; Volume is in IDR bn; Rating code: id(Pefindo) & idn (Fitch Indonesia)  
Sources: Bloomberg; Indonesia Stock Exchange (Volume)

### MOST ACTIVE CORPORATE BONDS

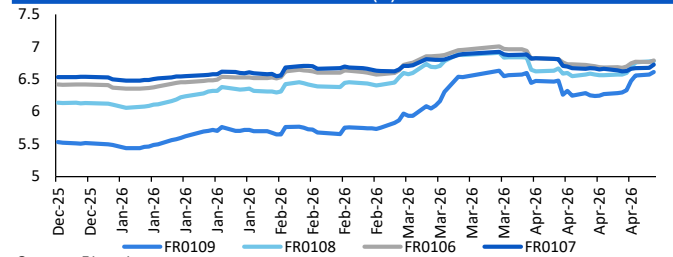
Bond	Rating	Coupon	Maturity	Last Price	Yield	Volume
TPIA05BCN2	AA-	7.000	25-Feb-31	100.02	6.99	391.65
MBMA01BCN3	A	8.250	9-Dec-30	93.33	10.07	260.00
DART04BCN1	A-	10.500	2-Jul-28	106.00	7.49	256.04
SMPPGD03ACN5	AAA	6.100	13-Sep-26	100.41	6.08	240.00
SMPNMP01ASECN1	AAA	6.250	18-Jul-26	100.42	6.22	223.20
PJAA03ACN1	A+	8.500	9-Jul-27	98.07	10.23	165.00
LPPI03BCN1	A	11.000	4-Oct-29	101.94	10.32	160.00
RMKE01BCN1	A	8.750	9-Jul-28	101.43	8.03	160.00
IJEE03C	A	9.750	9-Apr-29	101.00	9.36	150.00
WISLO3B	A	8.750	5-Jul-27	98.24	10.34	150.00

### SOVEREIGN BOND YIELDS

Country	Tenor	Coupon (%)	28-Apr-26			Spread over UST YC (bps)		
			28-Apr-26	MA LTM as of Mar	MA LTM as of Feb	28-Apr-26	Mar	Feb
United States	2yr		3.85	3.82	3.38			
USD	5yr		3.97	3.94	3.50			
	10yr		4.36	4.32	3.95			
German	2yr	0.25	2.62	2.62	2.00	-120	-118	-138
EUR	5yr	1.00	2.75	2.73	2.24	-122	-122	-126
	10yr	1.75	3.06	3.00	2.64	-130	-132	-130
Indonesia	2yr	3.50	4.19	4.48	3.91	37	68	53
USD	5yr	3.85	4.53	4.91	4.21	56	97	71
	10yr	6.63	5.32	5.57	5.04	96	125	110
Brazil	2yr	0.00	13.68	13.74	-	985	994	-
BRL	3yr	0.00	13.72	13.84	12.86	990	1,004	948
	10yr	10.00	13.85	14.02	13.56	1,003	1,022	1,018
Philippines	2yr	6.00	5.25	5.47	5.00	143	167	162
PHP	5yr	7.88	6.71	6.77	5.58	274	282	207
	10yr	11.38	6.99	7.08	5.91	263	276	197
Thailand	2yr	3.13	1.23	1.45	1.06	-259	-235	-232
THB	5yr	3.45	1.60	1.73	1.17	-237	-222	-233
	10yr	3.63	2.16	2.26	1.73	-220	-207	-222
India	2yr	7.59	-	6.42	5.68	-	262	230
INR	5yr	7.28	6.73	6.76	6.40	276	282	290
	10yr	8.83	6.98	7.03	6.68	262	271	273
Malaysia	3yr	3.17	3.19	3.28	3.04	-66	-54	-34
MYR	5yr	3.26	3.34	3.44	3.33	-63	-50	-17
	10yr	4.18	3.55	3.64	3.50	-80	-68	-44

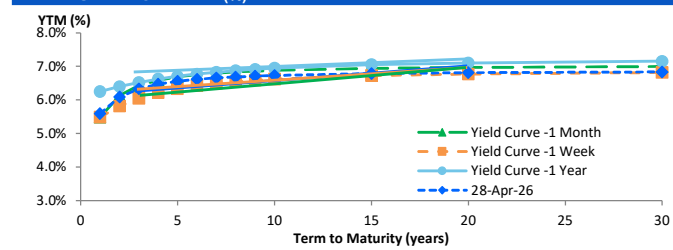
Sources: Bloomberg (Current Yield Curve), US Treasury

### YIELD OF GOVERNMENT BOND BENCHMARK (%)



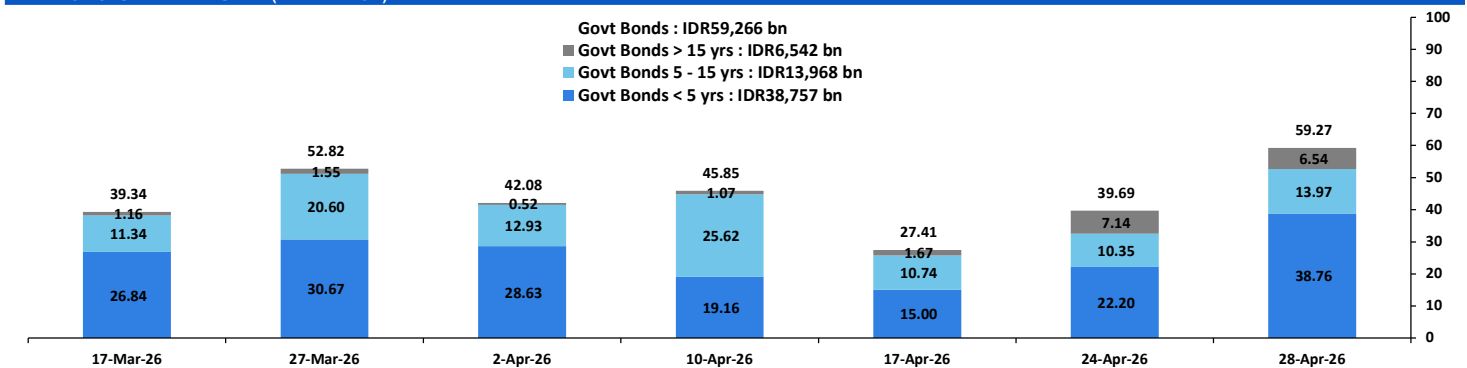
Source: Bloomberg

### YIELD CURVE MOVEMENT (%)



Source: Bloomberg

### TRADING VOLUME BY MATURITY (IDR TRILLION)



Sources: Indonesia Stock Exchange

### CURRENCY

Price	28-Apr-26	-1 Day	-1 Week	-1 Month	EoP2025	
DXY	98.66	↑	98.50	98.39	100.15	98.32
USD/IDR	17,225	↑	17,195	17,144	16,965	16,690
EUR/USD	1.17	↓	1.17	1.17	1.15	1.17
USD/JPY	159.50	↑	159.42	159.37	160.31	156.71
USD/CNY	6.837	↑	6.827	6.827	6.911	6.988
USD/MYR	3.953	↑	3.952	3.951	4.011	4.060
SGD/IDR	13,509	↓	13,512	13,478	13,191	12,969

Source: Bloomberg

### COMMODITY

Price	28-Apr-26	-1 Day	-1 Week	-1 Month	EoP2025	
CPO (Palm Oil)	4,462	↓	4,517	4,491	4,540	3,998
Coal	133.50	↓	133.70	132.90	135.60	107.50
Gold (XAU/USD)	4,621	↓	4,682	4,720	4,494	4,319
Nickel	18,957	↑	18,877	18,088	17,034	16,546
Copper	597.20	↓	602.10	601.05	546.70	568.20
Brent	111.08	↑	108.23	98.48	112.57	60.85
WTI	99.19	↑	96.37	92.13	99.64	57.42

### PHEI FAIR SPREAD

	1Y	2Y	3Y	4Y	5Y	6Y	7Y	8Y	9Y	10Y	#
AAA	38	43	47	51	55	59	62	64	67	68	
AA+*	44	47	50	53	56	60	62	64	66	67	
AA	63	65	67	70	73	76	79	80	81	81	
AA-*	104	106	108	112	116	120	122	123	123	123	
A+*	158	162	165	172	178	183	185	186	186	186	
A	214	223	229	238	248	254	258	260	260	260	
A-*	261	278	289	302	315	325	331	334	335	336	
BBB+*	302	329	345	363	380	393	402	408	411	412	
BBB	340	376	400	422	444	461	473	481	486	489	

\*interpolated, as of April 28, 2026 (bps)

Sources: PHEI, Bloomberg

### SBN HOLDING - (IDR tn)

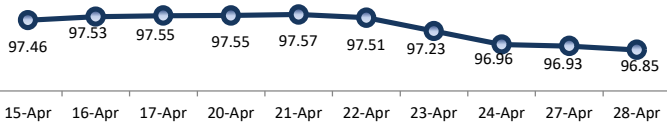
	24-Apr-2026	WoW	Mtd	YTD
Banks	1,336.9	12.3	(48.5)	8.2
Bank Indonesia (exclude repo)	1,690.1	(20.4)	1.3	48.4
Non-Banks:				
Mutual Fund	260.9	(0.1)	(0.7)	18.0
Insurance & Pension Fund	1,357.9	2.9	5.5	67.2
Foreign Investor	858.7	0.0	5.1	(20.0)
Individual	549.4	19.1	17.2	12.0
Others	708.4	13.5	11.3	59.5
<b>Total</b>	<b>6,762.1</b>	<b>27.5</b>	<b>(8.8)</b>	<b>193.3</b>
Domestic Investor	4,213.4	47.8	(15.2)	164.9
Foreign Investor	858.7	0.0	5.1	(20.0)
Bank Indonesia (include repo)	1,701.0	(0.2)	9.8	60.4

Source: DJPPR (Processed)

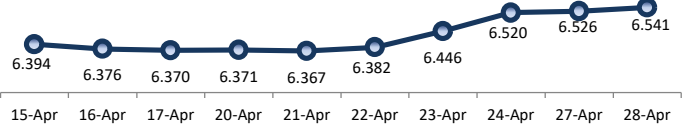
VALUATIONS OF GOVERNMENT BONDS

Bond	Issue Date	Mature Date	Coupon	TTM	Modified Duration	YTM (Change)	Prev Closing Price	Fair Yield Range		Fair Price Range		Last Trade				
												Date	Price	Vol (IDR bn)	Freq	
FR0056	23-Sep-10	15-Sep-26	8.38	0.4	0.37	5.40	↑ 2.6bps	101.07	5.016	5.200	101.16	101.24	28-Apr-26	100.65	5.08	24
FR0090	8-Jul-21	15-Apr-27	5.13	1.0	0.93	5.76	↑ 4.1bps	99.41	5.557	5.741	99.43	99.60	28-Apr-26	99.80	1,493.49	107
FR0059	15-Sep-11	15-May-27	7.00	1.0	0.97	5.95	↑ 3.5bps	101.04	5.650	5.834	101.16	101.35	28-Apr-26	100.75	244.90	13
FR0042	25-Jan-07	15-Jul-27	10.25	1.2	1.11	5.90	↑ 3.3bps	105.00	5.792	5.977	104.92	105.14	21-Apr-26	103.06	0.00	1
FR0094	4-Mar-22	15-Jan-28	5.60	1.7	1.59	6.00	↑ 1.2bps	99.35	5.659	5.843	99.60	99.89	16-Mar-26	98.95	1.90	1
FR0047	30-Aug-07	15-Feb-28	10.00	1.8	1.62	6.09	↑ 1.3bps	106.53	6.019	6.203	106.36	106.68	28-Apr-26	106.35	1.07	4
FR0064	13-Aug-12	15-May-28	6.13	2.0	1.85	6.06	↑ 1.1bps	100.12	5.997	6.164	99.92	100.24	28-Apr-26	99.70	4.79	18
FR0095	19-Aug-22	15-Aug-28	6.38	2.3	2.09	6.06	↓ -0.6bps	100.65	6.041	6.199	100.36	100.70	28-Apr-26	101.00	3.31	15
FR0099	27-Jan-23	15-Jan-29	6.40	2.7	2.41	6.43	↓ -0.1bps	99.91	6.445	6.629	99.43	99.88	1-Jul-25	99.50	49.05	2
FR0071	12-Sep-13	15-Mar-29	9.00	2.9	2.51	6.29	↑ 1.7bps	107.02	6.202	6.334	106.91	107.27	28-Apr-26	107.90	253.65	12
FR0101	2-Nov-23	15-Apr-29	6.88	3.0	2.64	6.30	↑ 0.1bps	101.53	6.212	6.372	101.34	101.77	28-Apr-26	101.35	1,206.45	51
FR0078	27-Sep-18	15-May-29	8.25	3.0	2.59	6.34	↑ 1.9bps	105.22	6.228	6.402	105.04	105.53	28-Apr-26	105.60	6.14	5
FR0104	22-Aug-24	15-Jul-30	6.50	4.2	3.57	6.53	↑ 1.9bps	99.88	6.390	6.554	99.79	100.39	28-Apr-26	100.01	362.50	29
FR0052	20-Aug-09	15-Aug-30	10.50	4.3	3.45	6.43	↑ 0.7bps	115.06	6.421	6.606	114.36	115.10	28-Apr-26	114.60	0.07	4
FR0082	1-Aug-19	15-Sep-30	7.00	4.4	3.70	6.45	↑ 3.2bps	102.05	6.377	6.561	101.64	102.34	28-Apr-26	101.70	124.41	23
FRSDG001	27-Oct-22	15-Oct-30	7.38	4.5	3.77	6.23	→ 0.0bps	104.40	5.724	5.908	105.68	106.42	23-Apr-26	104.49	7.00	1
FR0087	13-Aug-20	15-Feb-31	6.50	4.8	4.02	6.58	↑ 1.9bps	99.65	6.425	6.586	99.64	100.30	28-Apr-26	99.95	277.83	48
<b>FR0109</b>	<b>15-Aug-25</b>	<b>15-Mar-31</b>	<b>5.88</b>	<b>4.9</b>	<b>4.14</b>	<b>6.61</b>	<b>↑ 3.9bps</b>	<b>96.97</b>	<b>6.390</b>	<b>6.574</b>	<b>97.11</b>	<b>97.86</b>	<b>28-Apr-26</b>	<b>96.77</b>	<b>25,102.00</b>	<b>404</b>
FR0085	4-May-20	15-Apr-31	7.75	5.0	4.09	6.50	↓ -0.4bps	105.22	6.483	6.667	104.51	105.30	24-Apr-26	105.55	0.00	1
FR0073	6-Aug-15	15-May-31	8.75	5.0	3.95	6.52	↑ 7.3bps	109.43	6.318	6.502	109.54	110.37	28-Apr-26	108.85	20.73	9
FR0054	22-Jul-10	15-Jul-31	9.50	5.2	4.07	6.57	↑ 3.3bps	112.72	6.515	6.699	112.14	113.00	28-Apr-26	113.20	0.13	2
FR0091	8-Jul-21	15-Apr-32	6.38	6.0	4.87	6.63	↑ 0.7bps	98.78	6.482	6.666	98.58	99.47	28-Apr-26	98.85	680.06	60
FR0058	21-Jul-11	15-Jun-32	8.25	6.1	4.70	6.52	↑ 1.1bps	108.59	6.534	6.718	107.58	108.54	27-Apr-26	107.25	0.20	2
FR0074	10-Nov-16	15-Aug-32	7.50	6.3	4.93	6.60	↑ 0.7bps	104.57	6.552	6.676	104.17	104.82	28-Apr-26	104.50	32.11	7
FR0096	19-Aug-22	15-Feb-33	7.00	6.8	5.29	6.63	↑ 1.7bps	101.99	6.602	6.663	101.80	102.14	28-Apr-26	101.85	986.34	47
FR0065	30-Aug-12	15-May-33	6.63	7.0	5.40	6.60	↓ -2.4bps	100.11	6.582	6.766	99.22	100.24	28-Apr-26	99.60	186.49	44
FR0100	24-Aug-23	15-Feb-34	6.63	7.8	5.93	6.73	↑ 2.0bps	99.38	6.613	6.751	99.23	100.06	28-Apr-26	99.35	453.73	115
FR0068	1-Aug-13	15-Mar-34	8.38	7.9	5.78	6.73	↓ -2.3bps	109.89	6.640	6.793	109.52	110.50	28-Apr-26	110.20	257.88	17
FR0080	4-Jul-19	15-Jun-35	7.50	9.1	6.45	6.73	↓ -0.4bps	105.16	6.637	6.771	104.89	105.83	28-Apr-26	105.75	9.81	35
FR0103	29-Jul-25	15-Jul-35	6.75	9.2	6.65	6.79	↑ 0.2bps	99.75	6.617	6.801	99.64	100.89	28-Apr-26	100.15	350.26	84
<b>FR0108</b>	<b>31-Jul-25</b>	<b>15-Apr-36</b>	<b>6.50</b>	<b>10.0</b>	<b>7.20</b>	<b>6.78</b>	<b>↑ 0.5bps</b>	<b>98.01</b>	<b>6.554</b>	<b>6.738</b>	<b>98.29</b>	<b>99.60</b>	<b>28-Apr-26</b>	<b>97.96</b>	<b>4,613.71</b>	<b>568</b>
FR0072	9-Jul-15	15-May-36	8.25	10.0	6.72	6.78	↑ 6.0bps	110.59	6.663	6.822	110.56	111.48	28-Apr-26	110.51	60.50	6
FR0088	7-Jan-21	15-Jun-36	6.25	10.1	7.21	6.58	↓ -3.1bps	97.61	6.591	6.727	96.52	97.50	28-Apr-26	96.75	17.56	60
FR0045	24-May-07	15-May-37	9.75	11.0	6.93	6.80	↑ 3.6bps	122.67	6.786	6.970	121.17	122.77	20-Apr-26	124.50	1.20	1
FR0093	6-Jan-22	15-Jul-37	6.38	11.2	7.73	6.71	↑ 0.9bps	97.42	6.593	6.739	97.16	98.28	28-Apr-26	96.95	33.64	17
FR0075	10-Aug-17	15-May-38	7.50	12.0	7.74	6.79	↑ 0.7bps	105.80	6.710	6.825	105.48	106.45	28-Apr-26	104.80	1.56	9
FR0098	15-Sep-22	15-Jun-38	7.13	12.1	7.91	6.76	↑ 0.3bps	103.01	6.697	6.793	102.70	103.51	28-Apr-26	103.50	585.44	28
FR0050	24-Jan-08	15-Jul-38	10.50	12.2	7.45	6.48	↓ -0.2bps	133.59	6.399	6.583	132.51	134.38	28-Apr-26	132.40	0.02	2
FR0079	7-Jan-19	15-Apr-39	8.38	13.0	8.16	6.81	↑ 0.5bps	113.30	6.710	6.853	112.94	114.26	28-Apr-26	112.40	2.15	4
FR0083	7-Nov-19	15-Apr-40	7.50	14.0	8.73	6.82	↑ 1.0bps	106.07	6.708	6.848	105.80	107.11	28-Apr-26	106.01	1,013.40	38
<b>FR0106</b>	<b>9-Jan-25</b>	<b>15-Aug-40</b>	<b>7.13</b>	<b>14.3</b>	<b>8.85</b>	<b>6.79</b>	<b>↑ 2.4bps</b>	<b>103.05</b>	<b>6.644</b>	<b>6.809</b>	<b>102.85</b>	<b>104.38</b>	<b>28-Apr-26</b>	<b>103.40</b>	<b>1,412.41</b>	<b>45</b>
FR0057	21-Apr-11	15-May-41	9.50	15.0	8.43	6.81	↑ 0.6bps	125.09	6.729	6.855	124.58	125.96	14-Apr-26	126.50	5.25	2
FR0062	9-Feb-12	15-Apr-42	6.38	16.0	9.76	6.78	↑ 1.9bps	96.07	6.701	6.826	95.65	96.83	28-Apr-26	97.00	107.49	21
FR0092	8-Jul-21	15-Jun-42	7.13	16.1	9.41	6.71	↑ 1.4bps	104.02	6.643	6.827	102.87	104.72	28-Apr-26	103.85	89.95	27
FR0097	19-Aug-22	15-Jun-43	7.13	17.1	9.73	6.71	↑ 2.3bps	104.22	6.619	6.803	103.22	105.13	28-Apr-26	103.95	330.19	39
FR0067	18-Jul-13	15-Feb-44	8.75	17.8	9.59	6.80	↑ 0.2bps	119.95	6.710	6.874	119.08	120.99	28-Apr-26	118.80	2.46	2
<b>FR0107</b>	<b>9-Jan-25</b>	<b>15-Aug-45</b>	<b>7.13</b>	<b>19.3</b>	<b>10.46</b>	<b>6.72</b>	<b>↑ 4.9bps</b>	<b>104.30</b>	<b>6.567</b>	<b>6.751</b>	<b>103.99</b>	<b>106.04</b>	<b>28-Apr-26</b>	<b>103.90</b>	<b>3,131.62</b>	<b>87</b>
FR0076	22-Sep-17	15-May-48	7.38	22.0	10.78	6.86	↑ 1.0bps	105.78	6.732	6.895	105.39	107.32	28-Apr-26	106.50	4.62	45
FR0089	7-Jan-21	15-Aug-51	6.88	25.3	11.77	6.85	↑ 0.3bps	100.24	6.726	6.897	99.73	101.79	28-Apr-26	100.50	120.31	104
FR0102	5-Jan-24	15-Jul-54	6.88	28.2	12.18	6.84	↑ 2.6bps	100.43	6.684	6.861	100.15	102.40	28-Apr-26	99.80	992.77	89
FR0105	27-Aug-24	15-Jul-64	6.88	38.2	13.24	6.84	↑ 0.9bps	100.48	6.664	6.848	100.35	102.90	14-Apr-25	99.00	0.10	1
ORI024T6	8-Nov-23	15-Oct-29	6.35	3.5	-	6.30	→ 0.0bps	100.16	6.299	6.483	99.59	100.16	28-Apr-26	103.00	1.11	4
ORI025T6	28-Feb-24	15-Feb-30	6.40	3.8	-	6.33	↑ 3.0bps	100.25	6.313	6.498	99.67	100.29	28-Apr-26	100.25	14.27	17
ORI026T6	30-Oct-24	15-Oct-30	6.40	4.5	-	6.32	→ 0.0bps	100.31	6.258	6.442	99.84	100.55	28-Apr-26	100.05	1.16	9
PBS003	2-Feb-12	15-Jan-27	6.00	0.7	0.68	5.60	↑ 0.7bps	100.27	5.152	5.336	100.45	100.58	28-Apr-26	100.85	868.24	74
PBS020	22-Oct-18	15-Oct-27	9.00	1.5	1.37	5.46	↓ -0.6bps	104.89	5.292	5.476	104.89	105.16	31-Jul-24	108.25	0.50	1
PBS018	4-Jun-18	15-May-28	7.63	2.0	1.82	5.62	↓ -0.3bps	103.82	5.511	5.695	103.68	104.04	3-Sep-19	99.29	2,000.00	2
<b>PBS030</b>	<b>4-Jun-21</b>	<b>15-Jul-28</b>	<b>5.88</b>	<b>2.2</b>	<b>2.01</b>	<b>6.11</b>	<b>↑ 2.7bps</b>	<b>99.51</b>	<b>5.917</b>	<b>6.101</b>	<b>99.53</b>	<b>99.90</b>	<b>28-Apr-26</b>	<b>99.60</b>	<b>668.06</b>	<b>172</b>
PBSG001	22-Sep-22	15-Sep-29	6.63	3.4	2.97	6.17	↑ 1.6bps	101.35	5.889	6.073	101.65	102.22	27-Apr-26	101.00	170.00	5
IFR0006	1-Apr-10	15-Mar-30	10.25	3.9	3.21	6.04	↓ -0.3bps	114.32	6.066	6.250	113.58	114.26	11-Mar-26	113.43	2.00	2
PBS023	15-May-1															

PRICE INDEX



YIELD INDEX



TECHNICAL ANALYSIS

FR0109

INDICATORS	28-Apr-26	-1 Day	Change
Last Price	96.97	97.12	(0.16)
DI+	15.61	16.29	(0.68)
DI-	51.53	51.74	(0.20)
ADX (15D)	39.85	38.88	0.98
A/D	-46,416.45	-22,145.47	(24,270.98)
CMF(20D)	-0.372	-0.220	(0.15)
CCI	-108.74	-96.66	(12.08)
Volume (IDR bn)	25,100.20	5,359.24	19,740.96
Frequency	404	248	156

COMMENT

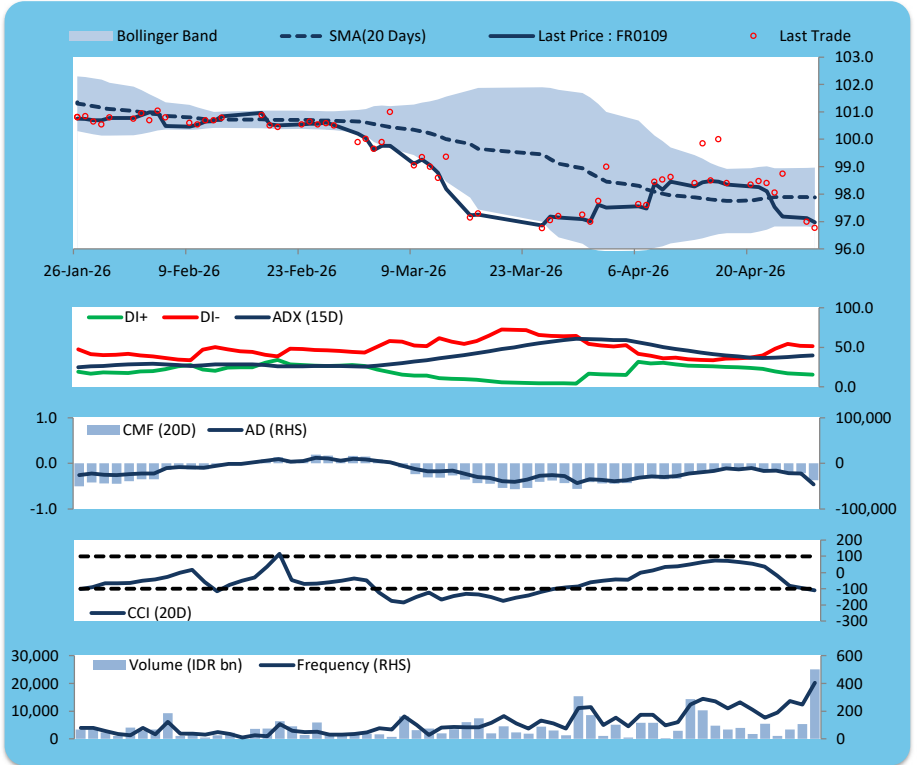
Price declined; heavy trade volume; downward trend continues to weaken; selling pressure increased; CCI declined.

SELL

FEATURES

Issue Date	14-Aug-25
Mature Date	15-Mar-31
Tenor	4.9
Coupon Rate	5.88
Last Yield	6.61
Modified Duration	4.14
Previous Coupon Date	15-Mar-26
Next Coupon Date	15-Sep-26

Sources: Bloomberg (Price); IDX



FR0108

INDICATORS	28-Apr-26	-1 Day	Change
Last Price	98.02	98.05	(0.03)
DI+	21.97	22.81	(0.84)
DI-	47.75	45.94	1.81
ADX (15D)	27.35	26.66	0.69
A/D	5,946.21	4,766.68	1,179.53
CMF(20D)	0.155	0.133	0.02
CCI	-113.41	-93.04	(20.37)
Volume (IDR bn)	4,613.71	1,129.86	3,483.85
Frequency	568	397	171

COMMENT

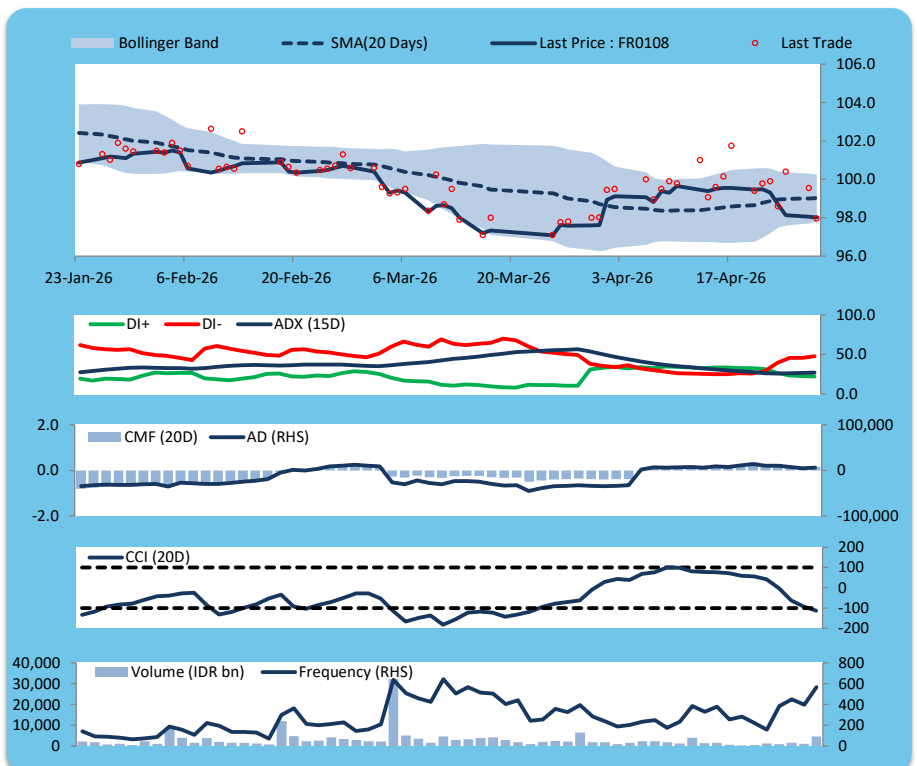
Price declined slightly; heavy trade volume; downward trend continues to weaken; buying pressure increased; CCI declined.

SELL

FEATURES

Issue Date	31-Jul-25
Mature Date	15-Apr-36
Tenor	10.0
Coupon Rate	6.50
Last Yield	6.78
Modified Duration	7.20
Previous Coupon Date	15-Apr-26
Next Coupon Date	15-Oct-26

Sources: Bloomberg (Price); IDX



FR0106

INDICATORS	28-Apr-26	-1 Day	Change
Last Price	103.06	103.28	(0.22)
DI+	30.07	32.10	(2.03)
DI-	44.20	43.27	0.93
ADX (15D)	25.27	25.72	(0.45)
A/D	3,373.84	5,407.60	(2,033.76)
CMF(20D)	0.302	0.517	(0.22)
CCI	-24.64	-1.59	(23.05)
Volume (IDR bn)	1,412.41	615.79	796.62
Frequency	45	39	6

COMMENT

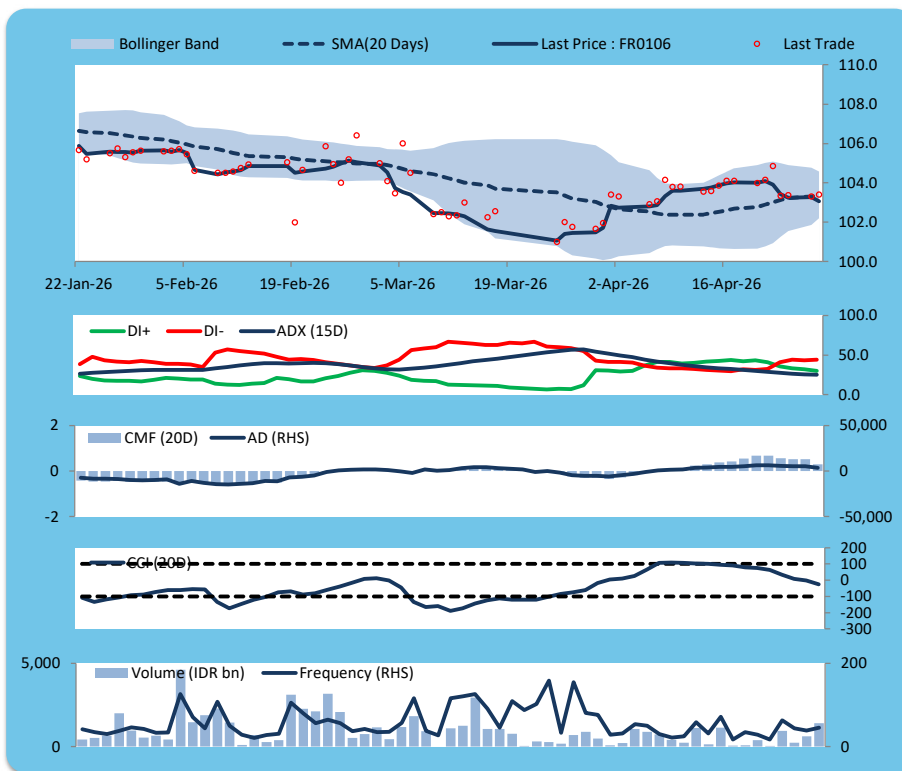
Price declined; heavy trade volume; downward trend continues to weaken; buying pressure eased; CCI declined.

SELL

FEATURES

Issue Date	9-Jan-25
Mature Date	15-Aug-40
Tenor	14.3
Coupon Rate	7.13
Last Yield	6.79
Modified Duration	8.85
Previous Coupon Date	15-Feb-26
Next Coupon Date	15-Aug-26

Sources: Bloomberg (Price); IDX



FR0107

INDICATORS	28-Apr-26	-1 Day	Change
Last Price	104.30	104.84	(0.54)
DI+	32.28	37.19	(4.91)
DI-	38.62	31.95	6.66
ADX (15D)	27.66	28.99	(1.34)
A/D	50.12	3,335.13	(3,285.02)
CMF(20D)	0.003	0.284	(0.28)
CCI	1.97	32.85	(30.87)
Volume (IDR bn)	3,131.62	696.29	2,435.34
Frequency	87	36	51

COMMENT

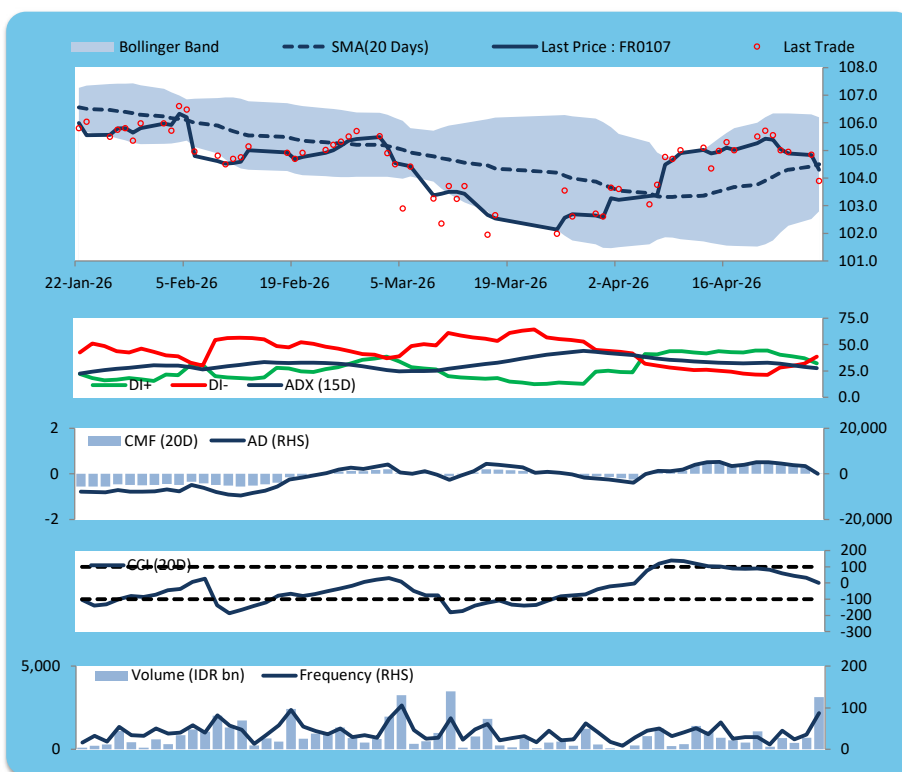
Price declined; heavy trade volume; downward trend continues to weaken; buying pressure eased; CCI declined.

SELL

FEATURES

Issue Date	9-Jan-25
Mature Date	15-Aug-45
Tenor (year)	19.3
Coupon Rate	7.13
Last Yield	6.72
Modified Duration	10.46
Previous Coupon Date	15-Feb-26
Next Coupon Date	15-Aug-26

Sources: Bloomberg (Price); IDX



**ECONOMIC AND FIXED INCOME RESEARCH TEAM****Chief Economist and Head Fixed Income Research**

Helmy Kristanto	helmy.kristanto@brids.co.id	(62-21) 5091 4100 ext. 3400
-----------------	-----------------------------	-----------------------------

**Economists**

Relindya Yuriswari Salehaningtyas	relindya.salehaningtyas@brids.co.id	(62-21) 5091 4100 ext. 3609
Ebenezer Mesotuhu Harefa	ebenezer.harefa@brids.co.id	(62-21) 5091 4100 ext. 3609

**Credit Analyst**

Laras Nerpatari Suliyas	laras.nerpatari@brids.co.id	(62-21) 5091 4100 ext. 3403
-------------------------	-----------------------------	-----------------------------

**Production & Database Management**

Eka Nuraini	ekan@brids.co.id	(62-21) 5091 4100 ext. 3407
Faiqul Kurnia Muslim	faiqul.muslim@brids.co.id	(62-21) 5091 4100 ext. 3402

**INSTITUTIONAL DEBT SALES & TRADING TEAM****Head of Debt Capital Market**

Yopi Chandra Wardhani	yopi.wardhani@brids.co.id	(62-21) 5091 4100 ext. 3220
-----------------------	---------------------------	-----------------------------

**Debt Sales**

Rachmat Eko Putranto	rachmat.putranto@brids.co.id	(62-21) 5091 4100 ext. 3218
Rafi Hutama Soeriaatmadja	rafi.soeriaatmadja@brids.co.id	(62-21) 5091 4100 ext. 3926
Adzkia Zahra	adzkia.zahra@brids.co.id	(62-21) 5091 4100 ext. 3924

**Debt Brokerage**

Citra Isramij P.	citra.isramij@brids.co.id	(62-21) 5091 4100 ext. 3228
Sisca Emilia	sisca.emilia@brids.co.id	(62-21) 5091 4100 ext. 3921
Deviano Sujitno	deviano.sujitno@brids.co.id	(62-21) 5091 4100 ext. 3925

**DISCLAIMER:** The information contained in this report has been taken from sources which we deem reliable. However, none of P.T. BRI Danareksa Sekuritas and/or its affiliated companies and/or their respective employees and/or agents makes any representation or warranty (express or implied) or accepts any responsibility or liability as to, or in relation to, the accuracy or completeness of the information and opinions contained in this report or as to any information contained in this report or any other such information or opinions remaining unchanged after the issue thereof. We expressly disclaim any responsibility or liability (express or implied) of P.T. BRI Danareksa Sekuritas, its affiliated companies and their respective employees and agents whatsoever and howsoever arising (including, without limitation for any claims, proceedings, action, suits, losses, expenses, damages or costs) which may be brought against or suffered by any person as a result of acting in reliance upon the whole or any part of the contents of this report and neither P.T. BRI Danareksa Sekuritas, its affiliated companies or their respective employees or agents accepts liability for any errors, omissions or mis-statements, negligent or otherwise, in the report and any liability in respect of the report or any inaccuracy therein or omission therefrom which might otherwise arise is hereby expressly disclaimed. The information contained in this report is not to be taken as any recommendation made by P.T. BRI Danareksa Sekuritas or any other person to enter into any agreement with regard to any investment mentioned in this document. This report is prepared for general circulation. It does not have regard to the specific person who may receive this report. In considering any investments you should make your own independent assessment and seek your own professional financial and legal advice.