

### MOST ACTIVE GOVERNMENT BONDS

Bond	Coupon	Maturity	Last Price	Yield	Volume (IDR bn)
PBS030	5.880	15-Jul-28	99.60	5.992	4,343.29
FR0109	5.875	15-Mar-31	98.75	6.562	3,367.50
FR0104	6.500	15-Jul-30	99.90	6.525	2,054.61
FR0103	6.750	15-Jul-35	99.74	6.795	1,961.85
FR0108	6.500	15-Apr-36	100.40	6.758	1,463.11
PBS003	6.000	15-Jan-27	100.55	5.506	778.52
FR0098	7.125	15-Jun-38	102.75	6.759	630.76
FR0096	7.000	15-Feb-33	103.50	6.617	579.04
FR0090	5.125	15-Apr-27	100.20	5.722	542.69
FR0082	7.000	15-Sep-30	101.70	6.371	486.10

Coupon, Last Price & Yield are in %; Volume is in IDR bn; Rating code: id(Pefindo) & idn (Fitch Indonesia)  
Sources: Bloomberg; Indonesia Stock Exchange (Volume)

### MOST ACTIVE CORPORATE BONDS

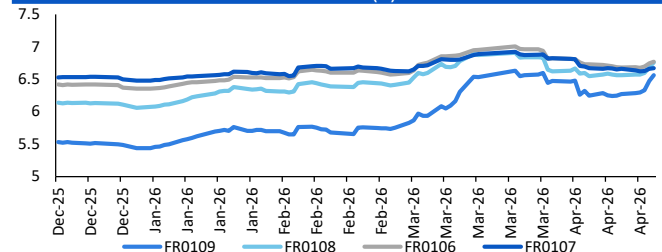
Bond	Rating	Coupon	Maturity	Last Price	Yield	Volume
BOLD03B	A+	8.000	10-Oct-28	98.01	8.91	300.00
SIMORA02ACN1	A+	10.000	13-Jul-26	101.02	9.90	245.70
SMLPPI01CN1	A	11.000	4-Oct-29	108.12	8.27	240.00
PALM02BCN3	A	9.750	18-Sep-27	102.22	8.05	221.36
SISMDR01CN2	A+	8.850	4-Jul-30	100.12	8.81	216.00
PIDL01CCN2	A+	10.500	30-Apr-30	107.29	8.34	180.00
SIBSDE02BCN2	AA	6.500	17-Dec-35	95.72	7.12	180.00
SMLPPI02BCN2	A	7.250	24-Feb-31	99.61	7.35	180.00
SMPIDL01DCN1	A+	10.750	7-Jan-30	106.31	8.74	180.00
LPPI02BCN1	A	11.000	4-Jul-28	105.81	8.08	150.00

### SOVEREIGN BOND YIELDS

Country	Tenor	Coupon (%)	MA LTM as of			Spread over UST YC (bps)		
			24-Apr-26	24-Mar	Feb	24-Apr-26	Mar	Feb
United States	2yr		3.86	3.82	3.38			
USD	5yr		3.96	3.94	3.50			
	10yr		4.33	4.32	3.95			
German	2yr	0.25	2.60	2.62	2.00	-124	-118	-138
EUR	5yr	1.00	2.73	2.73	2.24	-123	-122	-126
	10yr	1.75	3.03	3.00	2.64	-130	-132	-130
Indonesia	2yr	3.50	4.22	4.48	3.91	38	68	53
USD	5yr	3.85	4.58	4.91	4.21	61	97	71
	10yr	6.63	5.29	5.57	5.04	96	125	110
Brazil	2yr	0.00	13.64	13.74	-	980	994	-
BRL	3yr	0.00	13.68	13.84	12.86	984	1,004	948
	10yr	10.00	13.88	14.02	13.56	1,004	1,022	1,018
Philippines	2yr	6.00	5.25	5.47	5.00	141	167	162
PHP	5yr	7.88	6.52	6.77	5.58	256	282	207
	10yr	11.38	6.80	7.08	5.91	247	276	197
Thailand	2yr	3.13	1.23	1.45	1.06	-261	-235	-232
THB	5yr	3.45	1.62	1.73	1.17	-234	-222	-233
	10yr	3.63	2.15	2.26	1.73	-219	-207	-222
India	2yr	7.59	-	6.42	5.68	-	262	230
INR	5yr	7.28	6.72	6.76	6.40	276	282	290
	10yr	8.83	6.97	7.03	6.68	264	271	273
Malaysia	3yr	3.17	3.19	3.28	3.04	-66	-54	-34
MYR	5yr	3.26	3.34	3.44	3.33	-62	-50	-17
	10yr	4.18	3.57	3.64	3.50	-76	-68	-44

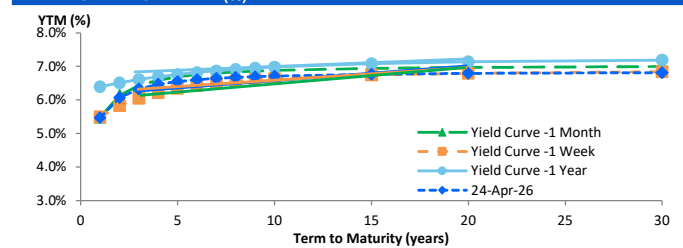
Sources: Bloomberg (Current Yield Curve), US Treasury

### YIELD OF GOVERNMENT BOND BENCHMARK (%)



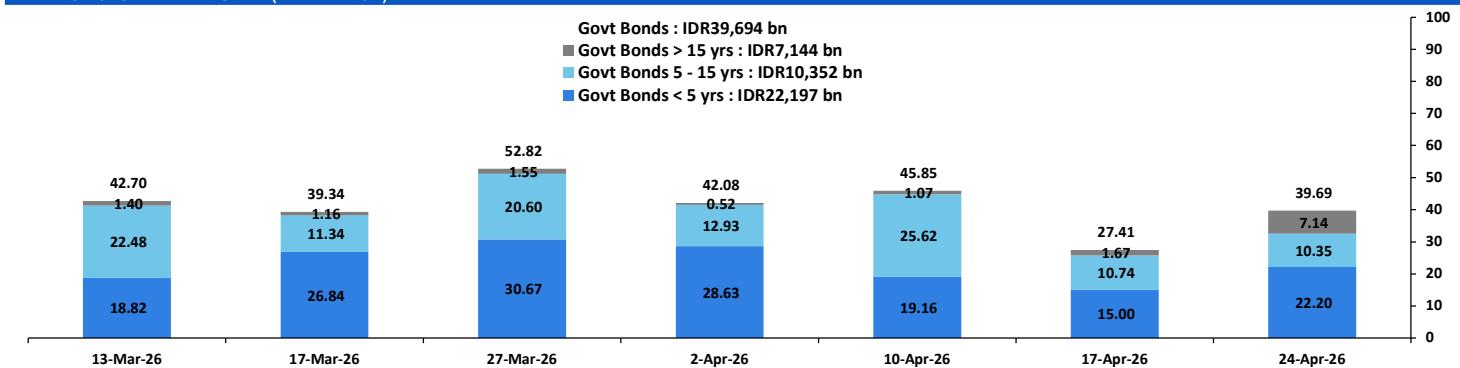
Source: Bloomberg

### YIELD CURVE MOVEMENT (%)



Source: Bloomberg

### TRADING VOLUME BY MATURITY (IDR TRILLION)



Sources: Indonesia Stock Exchange

### CURRENCY

Price	24-Apr-26	-1 Day	-1 Week	-1 Month	EoP2025
DX	98.79	98.77	98.10	99.43	98.32
USD/IDR	17,205	17,295	17,190	16,985	16,690
EUR/USD	1.17	1.17	1.18	1.16	1.17
USD/JPY	159.75	159.71	158.64	158.70	156.71
USD/CNY	6.836	6.831	6.818	6.894	6.988
USD/MYR	3.965	3.965	3.951	4.060	
SGD/IDR	13,483	13,546	13,512	13,220	12,969

Source: Bloomberg

### COMMODITY

Price	24-Apr-26	-1 Day	-1 Week	-1 Month	EoP2025
CPO (Palm Oil)	4,510	4,549	4,386	4,503	3,998
Coal	133.25	132.80	132.30	136.50	107.50
Gold (XAU/USD)	4,683	4,694	4,830	4,476	4,319
Nickel	18,602	18,322	17,988	16,803	16,546
Copper	598.50	608.15	611.45	542.25	568.20
Brent	107.09	105.07	90.38	104.49	60.85
WTI	97.43	95.85	83.85	92.35	57.42

### PHEI FAIR SPREAD

	1Y	2Y	3Y	4Y	5Y	6Y	7Y	8Y	9Y	10Y
AAA	38	44	47	51	55	59	62	64	66	68
AA+	44	47	50	53	56	60	62	64	66	67
AA	63	65	67	70	73	76	79	80	81	81
AA-	104	106	108	112	116	120	122	123	123	123
A+	158	162	165	172	178	183	185	186	186	186
A	214	223	229	238	248	254	258	260	260	260
A-	261	278	289	302	315	325	331	334	335	336
BBB+	302	329	345	363	380	393	402	408	411	412
BBB	340	376	400	422	444	461	473	481	486	489

\*interpolated, as of April 24, 2026 (bps)

Sources: PHEI, Bloomberg

### SBN HOLDING - (IDR tn)

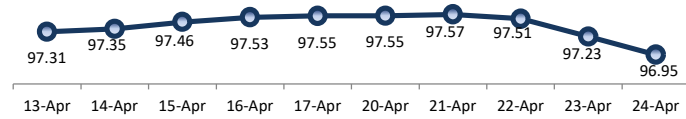
	22-Apr-2026	WoW	Mtd	YTD
Banks	1,342.1	44.3	(43.3)	13.4
Bank Indonesia (exclude repo)	1,690.5	(25.2)	1.8	48.8
Non-Banks:				
Mutual Fund	261.1	6.9	(0.6)	18.1
Insurance & Pension Fund	1,354.6	3.3	2.2	63.9
Foreign Investor	858.9	6.1	5.3	(19.8)
Individual	548.5	19.2	16.4	11.2
Others	696.6	4.8	(0.5)	47.7
<b>Total</b>	<b>6,752.1</b>	<b>59.5</b>	<b>(18.8)</b>	<b>183.3</b>
Domestic Investor	4,202.8	78.5	(25.8)	154.3
Foreign Investor	858.9	6.1	5.3	(19.8)
Bank Indonesia (include repo)	1,699.4	3.8	8.2	58.8

Source: DJPPR (Processed)

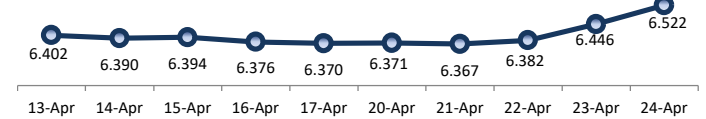
**VALUATIONS OF GOVERNMENT BONDS**

Bond	Issue Date	Mature Date	Coupon	TTM	Modified Duration	YTM (Change)	Prev Closing Price	Fair Yield Range		Fair Price Range		Last Trade			
												Date	Price	Vol (IDR bn)	Freq
FR0056	23-Sep-10	15-Sep-26	8.38	0.4	0.38	5.42 <span style="color: green;">↑</span> 13.0bps	101.08	4.733	4.854	101.34	101.38	24-Apr-26	101.50	258.86	29
FR0090	8-Jul-21	15-Apr-27	5.13	1.0	0.94	5.72 <span style="color: green;">↑</span> 13.1bps	99.45	5.478	5.599	99.55	99.67	24-Apr-26	100.20	542.69	106
FR0059	15-Sep-11	15-May-27	7.00	1.1	0.98	5.87 <span style="color: green;">↑</span> 20.7bps	101.12	5.575	5.696	101.32	101.44	24-Apr-26	101.55	190.92	34
FR0042	25-Jan-07	15-Jul-27	10.25	1.2	1.12	5.86 <span style="color: green;">↑</span> 7.7bps	105.06	5.764	5.885	105.07	105.22	21-Apr-26	103.06	0.00	1
FR0094	4-Mar-22	15-Jan-28	5.60	1.7	1.60	5.93 <span style="color: green;">↓</span> -2.2bps	99.46	5.609	5.730	99.78	99.98	16-Mar-26	98.95	1.90	1
FR0047	30-Aug-07	15-Feb-28	10.00	1.8	1.63	6.06 <span style="color: green;">↑</span> 12.3bps	106.61	6.041	6.162	106.47	106.68	24-Apr-26	106.35	0.00	1
FR0064	13-Aug-12	15-May-28	6.13	2.1	1.86	6.04 <span style="color: green;">↑</span> 11.4bps	100.15	6.018	6.139	99.97	100.20	24-Apr-26	100.25	121.34	23
FR0095	19-Aug-22	15-Aug-28	6.38	2.3	2.10	6.10 <span style="color: green;">↑</span> 14.6bps	100.57	6.071	6.171	100.42	100.64	24-Apr-26	100.55	296.28	23
FR0099	27-Jan-23	15-Jan-29	6.40	2.7	2.43	6.44 <span style="color: green;">↑</span> 15.7bps	99.88	6.484	6.605	99.48	99.78	1-Jul-25	99.50	49.05	2
FR0071	12-Sep-13	15-Mar-29	9.00	2.9	2.52	6.24 <span style="color: green;">↑</span> 12.5bps	107.16	6.205	6.326	106.95	107.28	24-Apr-26	107.00	301.00	4
FR0101	2-Nov-23	15-Apr-29	6.88	3.0	2.66	6.23 <span style="color: green;">↑</span> 13.2bps	101.73	6.228	6.348	101.40	101.73	24-Apr-26	101.87	194.75	31
FR0078	27-Sep-18	15-May-29	8.25	3.1	2.60	6.33 <span style="color: green;">↑</span> 19.9bps	105.25	6.254	6.375	105.13	105.47	24-Apr-26	105.20	349.70	13
FR0104	22-Aug-24	15-Jul-30	6.50	4.2	3.58	6.53 <span style="color: green;">↑</span> 13.7bps	99.90	6.399	6.520	99.92	100.36	24-Apr-26	99.90	2,054.61	117
FR0052	20-Aug-09	15-Aug-30	10.50	4.3	3.47	6.40 <span style="color: green;">↑</span> 5.5bps	115.19	6.452	6.573	114.52	115.01	23-Apr-26	112.92	0.02	2
FR0082	1-Aug-19	15-Sep-30	7.00	4.4	3.72	6.37 <span style="color: green;">↑</span> 2.5bps	102.36	6.408	6.529	101.77	102.23	24-Apr-26	101.70	486.10	36
FRSDG001	27-Oct-22	15-Oct-30	7.38	4.5	3.78	6.23 <span style="color: green;">↑</span> 65.7bps	104.40	5.631	5.751	106.32	106.81	23-Apr-26	104.49	7.00	1
FR0087	13-Aug-20	15-Feb-31	6.50	4.8	4.03	6.55 <span style="color: green;">↑</span> 10.7bps	99.77	6.427	6.548	99.79	100.29	24-Apr-26	99.31	94.11	34
<b>FR0109</b>	<b>15-Aug-25</b>	<b>15-Mar-31</b>	<b>5.88</b>	<b>4.9</b>	<b>4.15</b>	<b>6.56</b> <span style="color: green;">↑</span> 9.2bps	<b>97.16</b>	<b>6.399</b>	<b>6.519</b>	<b>97.33</b>	<b>97.82</b>	<b>24-Apr-26</b>	<b>98.75</b>	<b>3,367.50</b>	<b>273</b>
FR0085	4-May-20	15-Apr-31	7.75	5.0	4.10	6.52 <span style="color: green;">↑</span> 8.6bps	105.16	6.507	6.628	104.69	105.21	24-Apr-26	105.55	0.00	1
FR0073	6-Aug-15	15-May-31	8.75	5.1	3.97	6.51 <span style="color: green;">↑</span> 12.0bps	109.51	6.314	6.435	109.85	110.40	24-Apr-26	109.50	2.61	13
FR0054	22-Jul-10	15-Jul-31	9.50	5.2	4.08	6.54 <span style="color: green;">↑</span> 5.6bps	112.91	6.525	6.646	112.41	112.98	24-Apr-26	112.67	40.10	5
FR0091	8-Jul-21	15-Apr-32	6.38	6.0	4.89	6.63 <span style="color: green;">↑</span> 12.9bps	98.78	6.504	6.625	98.78	99.37	24-Apr-26	99.00	124.25	53
FR0058	21-Jul-11	15-Jun-32	8.25	6.1	4.71	6.51 <span style="color: green;">→</span> 0.0bps	108.66	6.574	6.695	107.71	108.35	24-Apr-26	107.25	0.26	3
FR0074	10-Nov-16	15-Aug-32	7.50	6.3	4.94	6.59 <span style="color: green;">↑</span> 9.4bps	104.64	6.548	6.669	104.21	104.85	24-Apr-26	104.60	0.31	4
FR0096	19-Aug-22	15-Feb-33	7.00	6.8	5.30	6.62 <span style="color: green;">↑</span> 5.3bps	102.06	6.574	6.680	101.71	102.30	24-Apr-26	103.50	579.04	43
FR0065	30-Aug-12	15-May-33	6.63	7.1	5.42	6.52 <span style="color: green;">↑</span> 6.2bps	100.52	6.600	6.720	99.47	100.14	24-Apr-26	97.50	44.24	28
FR0100	24-Aug-23	15-Feb-34	6.63	7.8	5.95	6.70 <span style="color: green;">↑</span> 4.0bps	99.57	6.607	6.728	99.37	100.09	24-Apr-26	99.80	126.85	63
FR0068	1-Aug-13	15-Mar-34	8.38	7.9	5.79	6.76 <span style="color: green;">↑</span> 6.8bps	109.72	6.638	6.759	109.75	110.53	24-Apr-26	110.60	6.72	22
FR0080	4-Jul-19	15-Jun-35	7.50	9.1	6.46	6.74 <span style="color: green;">↑</span> 4.1bps	105.13	6.626	6.747	105.06	105.91	24-Apr-26	105.95	17.69	45
FR0103	29-Jul-25	15-Jul-35	6.75	9.2	6.66	6.80 <span style="color: green;">↑</span> 7.3bps	99.68	6.623	6.744	100.03	100.85	24-Apr-26	99.74	1,961.85	168
<b>FR0108</b>	<b>31-Jul-25</b>	<b>15-Apr-36</b>	<b>6.50</b>	<b>10.0</b>	<b>7.21</b>	<b>6.76</b> <span style="color: green;">↑</span> 7.5bps	<b>98.15</b>	<b>6.560</b>	<b>6.680</b>	<b>98.70</b>	<b>99.57</b>	<b>24-Apr-26</b>	<b>100.40</b>	<b>1,463.11</b>	<b>450</b>
FR0072	9-Jul-15	15-May-36	8.25	10.1	6.74	6.72 <span style="color: green;">↑</span> 4.1bps	111.08	6.646	6.767	110.69	111.63	24-Apr-26	110.65	80.80	10
FR0088	7-Jan-21	15-Jun-36	6.25	10.1	7.22	6.58 <span style="color: green;">↑</span> 0.8bps	97.60	6.595	6.716	96.60	97.47	24-Apr-26	96.40	7.99	31
FR0045	24-May-07	15-May-37	9.75	11.1	6.94	6.78 <span style="color: green;">↑</span> 1.0bps	122.80	6.803	6.924	121.58	122.63	20-Apr-26	124.50	1.20	1
FR0093	6-Jan-22	15-Jul-37	6.38	11.2	7.74	6.69 <span style="color: green;">↑</span> 2.9bps	97.53	6.590	6.711	97.37	98.30	24-Apr-26	98.00	5.41	15
FR0075	10-Aug-17	15-May-38	7.50	12.1	7.75	6.79 <span style="color: green;">↑</span> 4.8bps	105.82	6.696	6.795	105.73	106.57	24-Apr-26	105.10	7.35	16
FR0098	15-Sep-22	15-Jun-38	7.13	12.1	7.92	6.76 <span style="color: green;">↑</span> 3.5bps	102.99	6.676	6.779	102.82	103.68	24-Apr-26	102.75	630.76	50
FR0050	24-Jan-08	15-Jul-38	10.50	12.2	7.46	6.48 <span style="color: green;">↓</span> -0.2bps	133.59	6.399	6.520	133.17	134.40	24-Apr-26	130.10	0.60	2
FR0079	7-Jan-19	15-Apr-39	8.38	13.0	8.17	6.82 <span style="color: green;">↑</span> 2.8bps	113.29	6.699	6.820	113.24	114.37	24-Apr-26	114.12	180.32	21
FR0083	7-Nov-19	15-Apr-40	7.50	14.0	8.74	6.79 <span style="color: green;">↑</span> 3.2bps	106.32	6.700	6.821	106.05	107.18	24-Apr-26	106.95	49.66	45
<b>FR0106</b>	<b>9-Jan-25</b>	<b>15-Aug-40</b>	<b>7.13</b>	<b>14.3</b>	<b>8.87</b>	<b>6.77</b> <span style="color: green;">↑</span> 2.2bps	<b>103.22</b>	<b>6.648</b>	<b>6.769</b>	<b>103.22</b>	<b>104.35</b>	<b>24-Apr-26</b>	<b>103.38</b>	<b>243.07</b>	<b>44</b>
FR0057	21-Apr-11	15-May-41	9.50	15.1	8.45	6.80 <span style="color: green;">↑</span> 0.7bps	125.18	6.707	6.817	125.00	126.21	14-Apr-26	126.50	5.25	2
FR0062	9-Feb-12	15-Apr-42	6.38	16.0	9.78	6.77 <span style="color: green;">↑</span> 3.1bps	96.22	6.682	6.802	95.88	97.01	24-Apr-26	95.90	2.89	17
FR0092	8-Jul-21	15-Jun-42	7.13	16.1	9.42	6.70 <span style="color: green;">↑</span> 1.2bps	104.10	6.660	6.780	103.34	104.55	24-Apr-26	102.80	155.57	34
FR0097	19-Aug-22	15-Jun-43	7.13	17.1	9.75	6.69 <span style="color: green;">↑</span> 1.1bps	104.42	6.637	6.758	103.68	104.94	24-Apr-26	103.50	339.73	42
FR0067	18-Jul-13	15-Feb-44	8.75	17.8	9.60	6.80 <span style="color: green;">↑</span> 2.0bps	119.99	6.711	6.832	119.57	120.99	23-Apr-26	119.50	2.90	3
<b>FR0107</b>	<b>9-Jan-25</b>	<b>15-Aug-45</b>	<b>7.13</b>	<b>19.3</b>	<b>10.50</b>	<b>6.67</b> <span style="color: green;">↑</span> 1.2bps	<b>104.91</b>	<b>6.577</b>	<b>6.698</b>	<b>104.58</b>	<b>105.94</b>	<b>24-Apr-26</b>	<b>104.95</b>	<b>396.59</b>	<b>24</b>
FR0076	22-Sep-17	15-May-48	7.38	22.1	10.80	6.85 <span style="color: green;">↑</span> 0.3bps	105.96	6.726	6.841	106.03	107.40	24-Apr-26	106.80	14.59	58
FR0089	7-Jan-21	15-Aug-51	6.88	25.3	11.79	6.85 <span style="color: green;">↑</span> 0.2bps	100.27	6.720	6.841	100.39	101.86	24-Apr-26	100.50	39.49	80
FR0102	5-Jan-24	15-Jul-54	6.88	28.2	12.22	6.81 <span style="color: green;">↑</span> 0.3bps	100.79	6.679	6.798	100.94	102.46	24-Apr-26	100.75	40.68	73
FR0105	27-Aug-24	15-Jul-64	6.88	38.2	13.26	6.84 <span style="color: green;">↑</span> 1.1bps	100.53	6.652	6.773	101.38	103.07	14-Apr-25	99.00	0.10	1
ORI024T6	8-Nov-23	15-Oct-29	6.35	3.5	-	6.31 <span style="color: green;">↑</span> 1.2bps	100.13	6.351	6.471	99.62	100.00	24-Apr-26	101.75	0.18	3
ORI025T6	28-Feb-24	15-Feb-30	6.40	3.8	-	6.30 <span style="color: green;">↑</span> 4.5bps	100.35	6.401	6.522	99.59	100.00	24-Apr-26	100.45	19.88	16
ORI026T6	30-Oct-24	15-Oct-30	6.40	4.5	-	6.32 <span style="color: green;">↓</span> -0.2bps	100.31	6.262	6.383	100.07	100.54	24-Apr-26	100.25	1.89	10
PBS003	2-Feb-12	15-Jan-27	6.00	0.7	0.69	5.51 <span style="color: green;">↑</span> 3.5bps	100.33	4.719	4.840	100.81	100.90	24-Apr-26	100.55	778.52	141
PBS020	22-Oct-18	15-Oct-27	9.00	1.5	1.38	5.48 <span style="color: green;">↑</span> 0.2bps	104.89	5.090	5.211	105.31	105.49	31-Jul-24	108.25	0.50	1
PBS018	4-Jun-18	15-May-28	7.63	2.1	1.83	5.62 <span style="color: green;">↓</span> -0.1bps	103.82	5.370	5.491	104.09	104.33	3-Sep-19	99.29	2,000.00	2
<b>PBS030</b>	<b>4-Jun-21</b>	<b>15-Jul-28</b>	<b>5.88</b>	<b>2.2</b>	<b>2.03</b>	<b>5.99</b> <span style="color: green;">↑</span> 4.0bps	<b>99.75</b>	<b>5.863</b>	<b>5.984</b>	<b>99.76</b>	<b>100.01</b>	<b>24-Apr-26</b>	<b>99.60</b>	<b>4,343.29</b>	<b>68</b>
PBSG001	22-Sep-22	15-Sep-29	6.63	3.4	2.98	6.16 <span style="color: green;">↑</span> 9.6bps	101.40								

PRICE INDEX



YIELD INDEX



TECHNICAL ANALYSIS

FR0109

INDICATORS	24-Apr-26	-1 Day	Change
Last Price	97.16	97.53	(0.37)
DI+	17.09	19.48	(2.39)
DI-	54.24	48.17	6.07
ADX (15D)	37.93	36.92	1.01
A/D	-21,848.18	-15,731.31	(6,116.87)
CMF(20D)	-0.222	-0.158	(0.06)
CCI	-81.73	-19.27	(62.46)
Volume (IDR bn)	3,367.50	1,089.85	2,277.65
Frequency	273	190	83

COMMENT

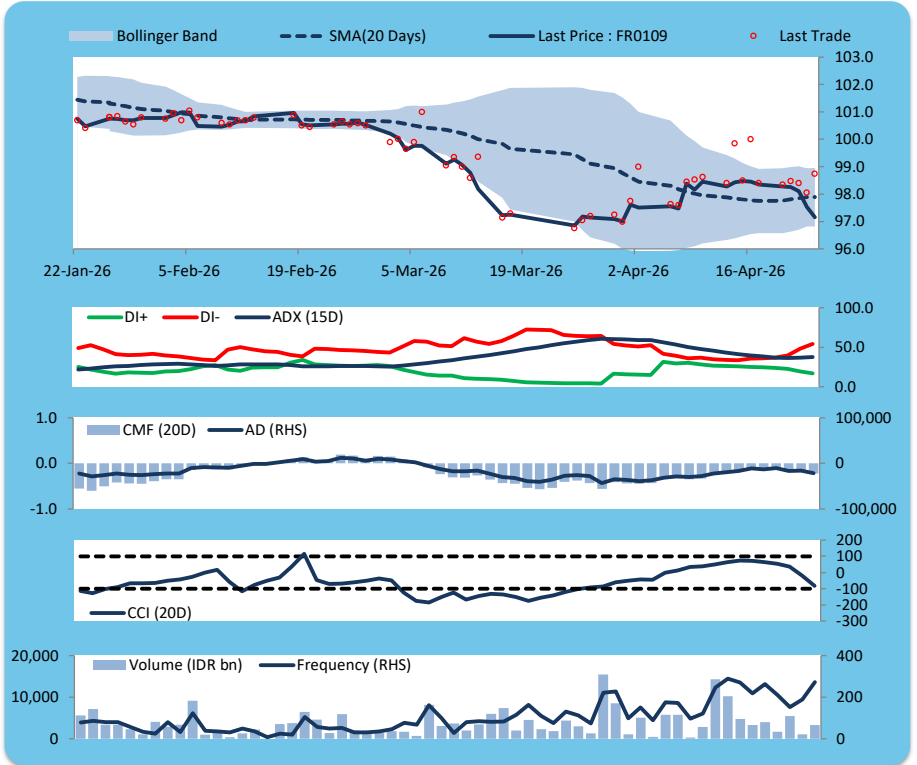
Price declined; heavy trade volume; downward trend continues to weaken; selling pressure increased; CCI declined.

SELL

FEATURES

Issue Date	14-Aug-25
Mature Date	15-Mar-31
Tenor	4.9
Coupon Rate	5.88
Last Yield	6.56
Modified Duration	4.15
Previous Coupon Date	15-Mar-26
Next Coupon Date	15-Sep-26

Sources: Bloomberg (Price); IDX



FR0108

INDICATORS	24-Apr-26	-1 Day	Change
Last Price	98.15	98.68	(0.54)
DI+	23.48	26.80	(3.32)
DI-	45.87	39.15	6.71
ADX (15D)	26.16	25.72	0.44
A/D	7,223.48	10,440.30	(3,216.83)
CMF(20D)	0.194	0.277	(0.08)
CCI	-62.29	-2.96	(59.33)
Volume (IDR bn)	1,463.11	1,036.66	426.45
Frequency	450	386	64

COMMENT

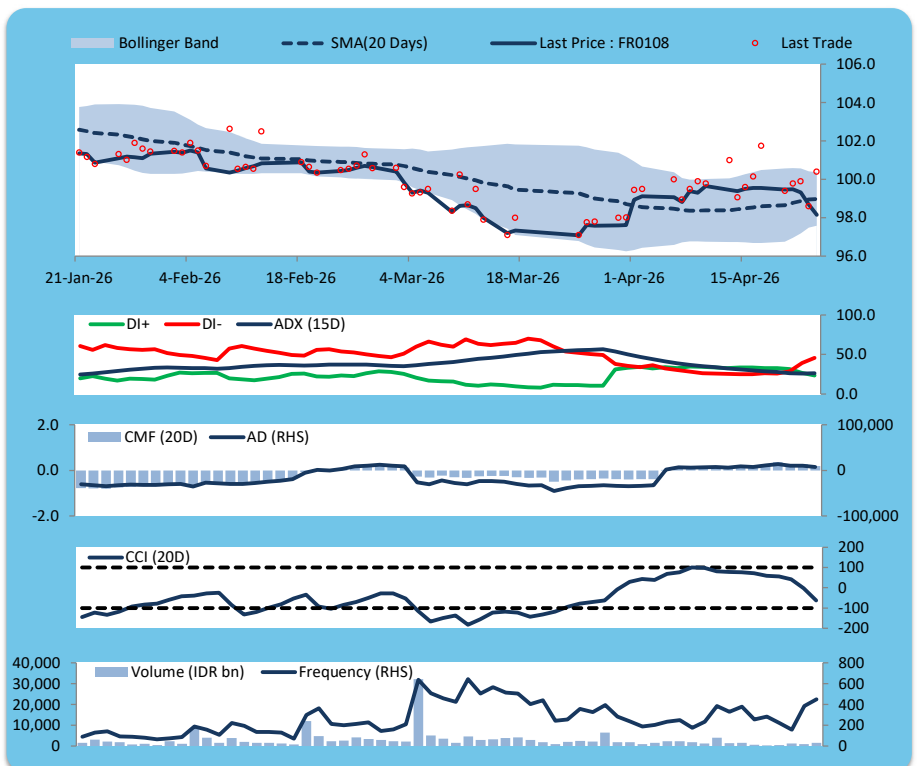
Price declined; heavy trade volume; downward trend continues to weaken; buying pressure eased; CCI declined.

SELL

FEATURES

Issue Date	31-Jul-25
Mature Date	15-Apr-36
Tenor	10.0
Coupon Rate	6.50
Last Yield	6.76
Modified Duration	7.21
Previous Coupon Date	15-Apr-26
Next Coupon Date	15-Oct-26

Sources: Bloomberg (Price); IDX



FR0106

INDICATORS	24-Apr-26	-1 Day	Change
Last Price	103.22	103.43	(0.21)
DI+	33.36	35.49	(2.13)
DI-	44.39	40.83	3.56
ADX (15D)	26.50	27.38	(0.88)
A/D	5,243.52	5,711.15	(467.63)
CMF(20D)	0.523	0.568	(0.04)
CCI	7.26	34.78	(27.52)
Volume (IDR bn)	243.07	944.99	(701.92)
Frequency	44	63	(19)

COMMENT

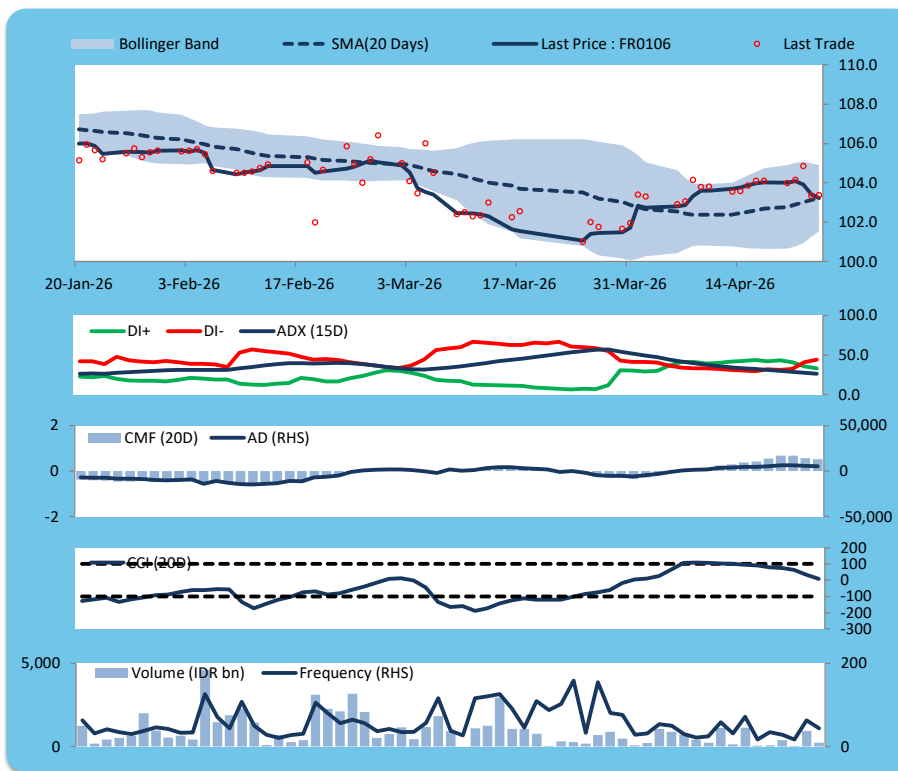
Price declined; moderate trade volume; downward trend continues to weaken; buying pressure eased; CCI declined.

SELL

FEATURES

Issue Date	9-Jan-25
Mature Date	15-Aug-40
Tenor	14.3
Coupon Rate	7.13
Last Yield	6.77
Modified Duration	8.87
Previous Coupon Date	15-Feb-26
Next Coupon Date	15-Aug-26

Sources: Bloomberg (Price); IDX



FR0107

INDICATORS	24-Apr-26	-1 Day	Change
Last Price	104.91	105.04	(0.13)
DI+	38.84	40.29	(1.44)
DI-	29.81	28.41	1.39
ADX (15D)	30.52	31.76	(1.24)
A/D	3,837.72	4,502.22	(664.51)
CMF(20D)	0.333	0.390	(0.06)
CCI	44.51	61.12	(16.62)
Volume (IDR bn)	396.59	685.44	(288.86)
Frequency	24	45	(21)

COMMENT

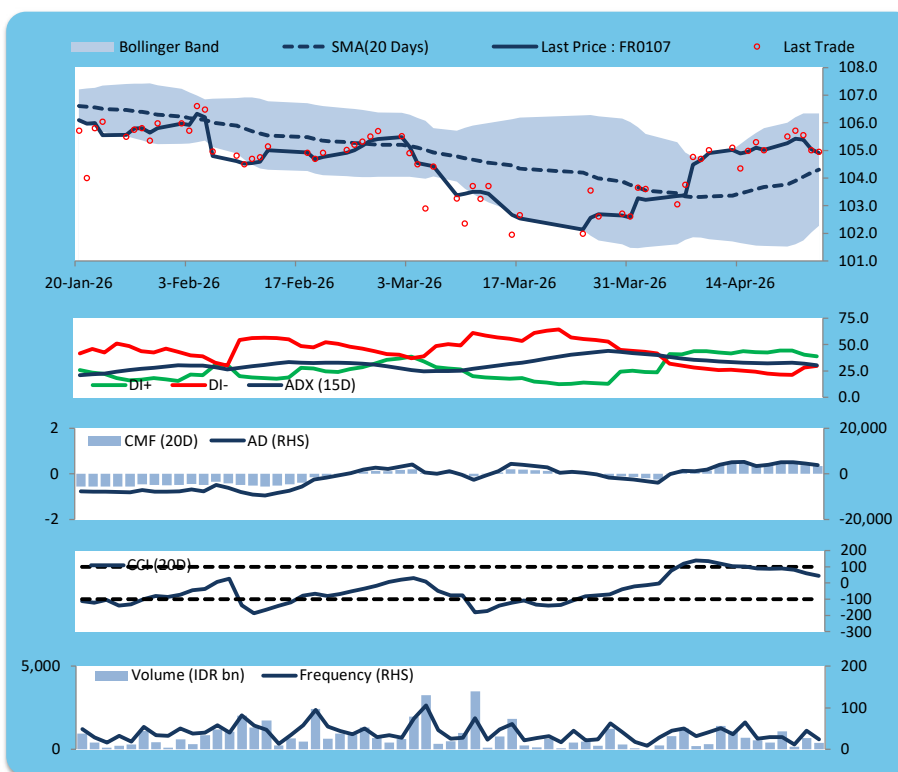
Price declined; moderate trade volume; downward trend continues to weaken; buying pressure eased; CCI declined.

SELL

FEATURES

Issue Date	9-Jan-25
Mature Date	15-Aug-45
Tenor (year)	19.3
Coupon Rate	7.13
Last Yield	6.67
Modified Duration	10.50
Previous Coupon Date	15-Feb-26
Next Coupon Date	15-Aug-26

Sources: Bloomberg (Price); IDX



**ECONOMIC AND FIXED INCOME RESEARCH TEAM****Chief Economist and Head Fixed Income Research**

Helmy Kristanto	helmy.kristanto@brids.co.id	(62-21) 5091 4100 ext. 3400
-----------------	-----------------------------	-----------------------------

**Economists**

Relindya Yuriswari Salehaningtyas	relindya.salehaningtyas@brids.co.id	(62-21) 5091 4100 ext. 3609
Ebenezer Mesotuhu Harefa	ebenezer.harefa@brids.co.id	(62-21) 5091 4100 ext. 3609

**Credit Analyst**

Laras Nerpatari Suliyas	laras.nerpatari@brids.co.id	(62-21) 5091 4100 ext. 3403
-------------------------	-----------------------------	-----------------------------

**Production & Database Management**

Eka Nuraini	ekan@brids.co.id	(62-21) 5091 4100 ext. 3407
Faiqul Kurnia Muslim	faiqul.muslim@brids.co.id	(62-21) 5091 4100 ext. 3402

**INSTITUTIONAL DEBT SALES & TRADING TEAM****Head of Debt Capital Market**

Yopi Chandra Wardhani	yopi.wardhani@brids.co.id	(62-21) 5091 4100 ext. 3220
-----------------------	---------------------------	-----------------------------

**Debt Sales**

Rachmat Eko Putranto	rachmat.putranto@brids.co.id	(62-21) 5091 4100 ext. 3218
Rafi Utama Soeriaatmadja	rafi.soeriaatmadja@brids.co.id	(62-21) 5091 4100 ext. 3926
Adzkia Zahra	adzkia.zahra@brids.co.id	(62-21) 5091 4100 ext. 3924

**Debt Brokerage**

Citra Isramij P.	citra.isramij@brids.co.id	(62-21) 5091 4100 ext. 3228
Sisca Emilia	sisca.emilia@brids.co.id	(62-21) 5091 4100 ext. 3921
Deviano Sujitno	deviano.sujitno@brids.co.id	(62-21) 5091 4100 ext. 3925

**DISCLAIMER:** The information contained in this report has been taken from sources which we deem reliable. However, none of P.T. BRI Danareksa Sekuritas and/or its affiliated companies and/or their respective employees and/or agents makes any representation or warranty (express or implied) or accepts any responsibility or liability as to, or in relation to, the accuracy or completeness of the information and opinions contained in this report or as to any information contained in this report or any other such information or opinions remaining unchanged after the issue thereof. We expressly disclaim any responsibility or liability (express or implied) of P.T. BRI Danareksa Sekuritas, its affiliated companies and their respective employees and agents whatsoever and howsoever arising (including, without limitation for any claims, proceedings, action, suits, losses, expenses, damages or costs) which may be brought against or suffered by any person as a result of acting in reliance upon the whole or any part of the contents of this report and neither P.T. BRI Danareksa Sekuritas, its affiliated companies or their respective employees or agents accepts liability for any errors, omissions or mis-statements, negligent or otherwise, in the report and any liability in respect of the report or any inaccuracy therein or omission therefrom which might otherwise arise is hereby expressly disclaimed. The information contained in this report is not to be taken as any recommendation made by P.T. BRI Danareksa Sekuritas or any other person to enter into any agreement with regard to any investment mentioned in this document. This report is prepared for general circulation. It does not have regard to the specific person who may receive this report. In considering any investments you should make your own independent assessment and seek your own professional financial and legal advice.