

### MOST ACTIVE GOVERNMENT BONDS

Bond	Coupon	Maturity	Last Price	Yield	Volume (IDR bn)
PBS030	5.880	15-Jul-28	99.73	6.030	3,842.25
FR0109	5.875	15-Mar-31	98.40	6.290	2,938.25
PBS003	6.000	15-Jan-27	100.26	5.667	1,829.68
FR0096	7.000	15-Feb-33	102.65	6.516	1,370.55
FR0108	6.500	15-Apr-36	101.00	6.575	1,196.99
FR0103	6.750	15-Jul-35	101.50	6.648	738.05
FR0104	6.500	15-Jul-30	102.10	6.295	566.83
FR0090	5.125	15-Apr-27	99.30	5.775	562.31
FR0059	7.000	15-May-27	101.14	5.804	531.63
FR0101	6.875	15-Apr-29	102.25	6.124	467.09

Coupon, Last Price & Yield are in %; Volume is in IDR bn; Rating code: id(Pefindo) & idn (Fitch Indonesia)  
Sources: Bloomberg; Indonesia Stock Exchange (Volume)

### MOST ACTIVE CORPORATE BONDS

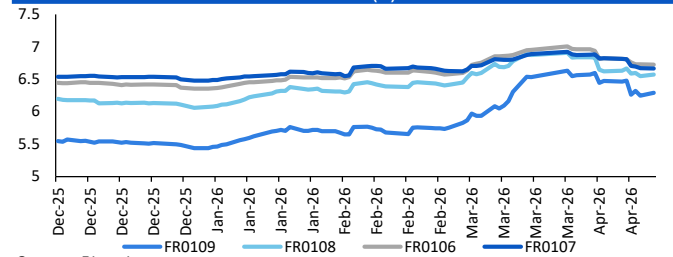
Bond	Rating	Coupon	Maturity	Last Price	Yield	Volume
SIBAL01BCN3	A	7.250	5-Dec-28	98.00	8.10	270.50
SMPPGD01ASOCN3AAA	AAA	5.250	23-Nov-26	99.77	5.26	212.00
INKP05BCN2	A+	10.250	5-Dec-27	100.50	9.91	210.10
SMINKP04CN5	A+	9.500	30-Sep-30	101.36	9.12	180.00
SWRATU01B	A	8.500	27-Mar-33	101.00	8.31	180.00
SMPIDL01CN3	A+	10.250	27-Aug-30	104.60	8.96	165.30
SIPTRO01BCN2	A+	8.750	21-Mar-30	100.02	8.74	153.00
SIBSDE02BCN2	AA	6.500	17-Dec-35	95.17	7.20	140.00
SMPIDL01DCN1	A+	10.750	7-Jan-30	104.81	9.21	140.00
SKSMFP02CN1	AAA	6.250	18-Jul-26	99.32	6.29	138.00

### SOVEREIGN BOND YIELDS

Country	Tenor	Coupon (%)	MA LTM as of			Spread over UST YC (bps)		
			13-Apr-26	13-Mar	Feb	13-Apr-26	Mar	Feb
United States	2yr		3.84	3.82	3.38			
USD	5yr		3.96	3.94	3.50			
	10yr		4.34	4.32	3.95			
German	2yr	0.25	2.62	2.62	2.00	-121	-118	-138
EUR	5yr	1.00	2.75	2.73	2.24	-121	-122	-126
	10yr	1.75	3.06	3.00	2.64	-127	-132	-130
Indonesia	2yr	3.50	4.27	4.48	3.91	45	68	53
USD	5yr	3.85	4.70	4.91	4.21	74	97	71
	10yr	6.63	5.36	5.57	5.04	103	125	110
Brazil	2yr	0.00	13.46	13.74	-	964	994	-
BRL	3yr	0.00	13.48	13.84	12.86	966	1,004	948
	10yr	10.00	13.67	14.02	13.56	984	1,022	1,018
Philippines	2yr	6.00	5.36	5.17	5.17	154	137	179
PHP	5yr	7.88	6.39	6.77	5.58	243	282	207
	10yr	11.38	6.76	7.08	5.91	243	276	197
Thailand	2yr	3.13	1.21	1.45	1.06	-261	-235	-232
THB	5yr	3.45	1.56	1.73	1.17	-240	-222	-233
	10yr	3.63	2.03	2.26	1.73	-230	-207	-222
India	2yr	7.59	6.10	6.42	5.68	228	262	230
INR	5yr	7.28	6.57	6.76	6.40	261	282	290
	10yr	8.83	6.96	7.03	6.68	262	271	273
Malaysia	3yr	3.17	3.23	3.28	3.04	-61	-54	-34
MYR	5yr	3.26	3.40	3.44	3.33	-56	-50	-17
	10yr	4.18	3.61	3.64	3.50	-73	-68	-44

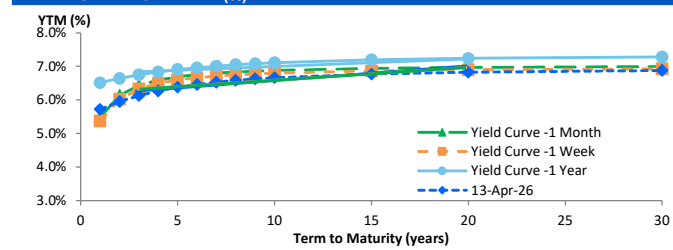
Sources: Bloomberg (Current Yield Curve), US Treasury

### YIELD OF GOVERNMENT BOND BENCHMARK (%)



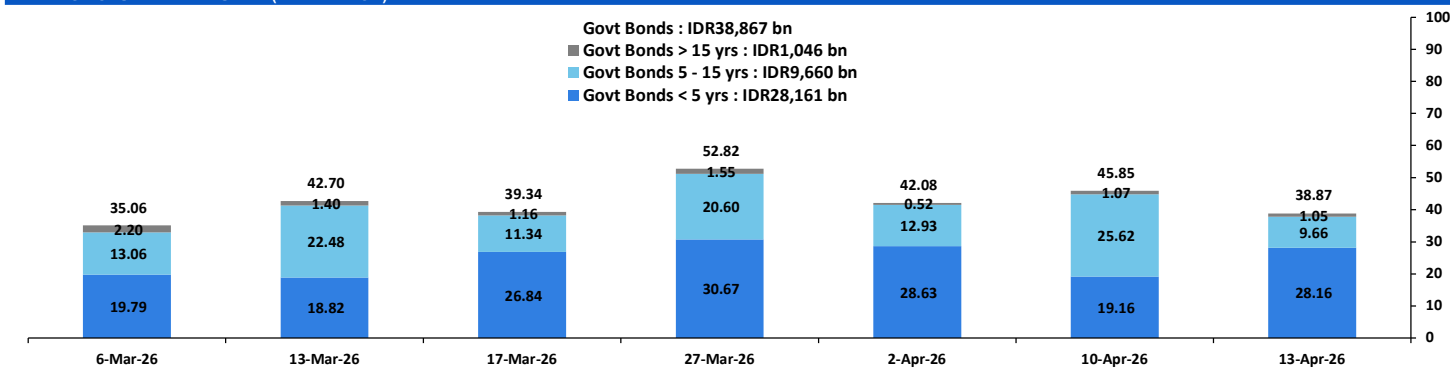
Source: Bloomberg

### YIELD CURVE MOVEMENT (%)



Source: Bloomberg

### TRADING VOLUME BY MATURITY (IDR TRILLION)



Sources: Indonesia Stock Exchange

### CURRENCY

Price	13-Apr-26	-1 Day	-1 Week	-1 Month	EoP2025	
DX	98.99	↑	98.65	99.98	100.36	98.32
USD/IDR	17,103	↑	17,098	17,038	16,944	16,690
EUR/USD	1.17	↓	1.17	1.15	1.14	1.17
USD/JPY	159.71	↑	159.27	159.68	159.73	156.71
USD/CNY	6.833	↑	6.829	6.882	6.904	6.988
USD/MYR	3.976	↑	3.965	4.028	3.938	4.060
SGD/IDR	13,425	↑	13,410	13,267	13,241	12,969

Source: Bloomberg

### COMMODITY

Price	13-Apr-26	-1 Day	-1 Week	-1 Month	EoP2025	
CPO (Palm Oil)	4,493	↑	4,491	4,740	4,525	3,998
Coal	134.90	↓	135.50	137.90	134.80	107.50
Gold (XAU/USD)	4,720	↓	4,750	4,650	5,019	4,319
Nickel	17,041	↑	16,895	16,916	17,059	16,546
Copper	587.10	↓	588.60	560.10	571.45	568.20
Brent	102.93	↑	95.20	109.77	103.14	60.85
WTI	104.60	↑	96.57	112.41	98.71	57.42

### PHEI FAIR SPREAD

	1Y	2Y	3Y	4Y	5Y	6Y	7Y	8Y	9Y	10Y	#
AAA	39	40	42	45	49	53	55	57	58	59	
AA+	45	47	48	50	54	58	62	65	68	70	
AA	64	67	67	68	71	75	80	84	88	91	
AA-	106	110	107	107	109	113	118	122	126	129	
A+	160	167	164	163	165	169	174	178	181	183	
A	216	227	226	227	231	237	241	245	248	249	
A-	262	282	287	293	301	309	316	321	324	326	
BBB+	300	331	345	358	372	384	394	401	406	408	
BBB	334	377	402	424	444	461	475	484	490	494	

\*interpolated, as of April 13, 2026 (bps)

Sources: PHEI, Bloomberg

### SBN HOLDING - (IDR tn)

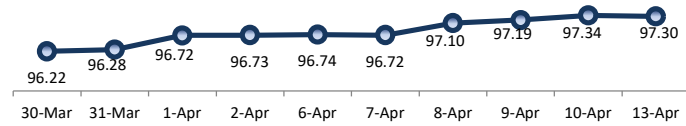
	08-Apr-2026	WoW	Mtd	YTD
Banks	1,415.4	(13.1)	30.1	86.8
Bank Indonesia (exclude repo)	1,665.6	18.4	(23.1)	23.9
Non-Banks:				
Mutual Fund	271.2	10.0	9.6	28.3
Insurance & Pension Fund	1,364.0	12.2	11.6	73.3
Foreign Investor	857.6	4.8	4.0	(21.1)
Individual	533.7	1.4	1.6	(3.6)
Others	696.9	(0.0)	(0.2)	48.0
<b>Total</b>	<b>6,804.4</b>	<b>33.5</b>	<b>33.5</b>	<b>235.6</b>
Domestic Investor	4,281.2	10.4	52.6	232.7
Foreign Investor	857.6	4.8	4.0	(21.1)
Bank Indonesia (include repo)	1,693.8	2.1	2.6	53.2

Source: DJPPR (Processed)

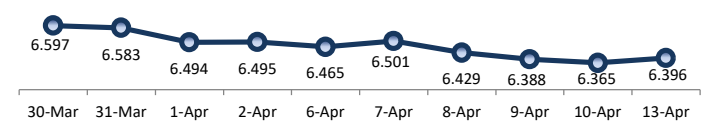
VALUATIONS OF GOVERNMENT BONDS

Bond	Issue Date	Mature Date	Coupon	TTM	Modified Duration	YTM (Change)	Prev Closing Price	Fair Yield Range		Fair Price Range		Last Trade			
												Date	Price	Vol (IDR bn)	Freq
FR0056	23-Sep-10	15-Sep-26	8.38	0.4	0.41	5.34 <span style="color: red;">▲ 3.1bps</span>	101.22	5.446	6.084	100.92	101.19	13-Apr-26	101.25	135.79	15
FR0090	8-Jul-21	15-Apr-27	5.13	1.0	0.94	5.78 <span style="color: green;">▼ -0.7bps</span>	99.38	5.579	6.065	99.10	99.56	13-Apr-26	99.30	562.31	45
FR0059	15-Sep-11	15-May-27	7.00	1.1	1.01	5.80 <span style="color: green;">▼ -2.0bps</span>	101.23	5.634	6.137	100.89	101.42	13-Apr-26	101.14	531.63	34
FR0042	25-Jan-07	15-Jul-27	10.25	1.3	1.15	5.94 <span style="color: red;">▲ 7.9bps</span>	105.11	5.766	6.104	104.93	105.34	13-Apr-26	103.01	0.00	1
FR0094	4-Mar-22	15-Jan-28	5.60	1.8	1.63	5.62 <span style="color: red;">▲ 16.3bps</span>	99.96	5.215	5.853	99.57	100.63	16-Mar-26	98.95	1.90	1
FR0047	30-Aug-07	15-Feb-28	10.00	1.8	1.66	6.05 <span style="color: red;">▲ 7.5bps</span>	106.76	5.850	6.126	106.64	107.13	13-Apr-26	107.60	0.32	5
FR0064	13-Aug-12	15-May-28	6.13	2.1	1.89	5.97 <span style="color: red;">▲ 3.6bps</span>	100.29	5.852	6.092	100.06	100.52	13-Apr-26	100.40	80.10	23
FR0095	19-Aug-22	15-Aug-28	6.38	2.3	2.13	6.00 <span style="color: red;">▲ 3.8bps</span>	100.79	5.813	6.096	100.59	101.21	13-Apr-26	100.95	144.27	18
FR0099	27-Jan-23	15-Jan-29	6.40	2.8	2.45	6.48 <span style="color: green;">▼ -0.5bps</span>	99.79	5.888	6.527	99.67	101.27	1-Jul-25	99.50	49.05	2
FR0071	12-Sep-13	15-Mar-29	9.00	2.9	2.55	6.08 <span style="color: green;">▼ -3.4bps</span>	107.68	6.014	6.142	107.53	107.88	13-Apr-26	104.40	0.32	1
FR0101	2-Nov-23	15-Apr-29	6.88	3.0	2.60	6.12 <span style="color: green;">▼ -0.9bps</span>	102.03	5.980	6.188	101.86	102.43	13-Apr-26	102.25	467.09	34
FR0078	27-Sep-18	15-May-29	8.25	3.1	2.63	6.14 <span style="color: red;">▲ 1.1bps</span>	105.84	6.002	6.214	105.63	106.24	13-Apr-26	106.00	96.52	12
FR0104	22-Aug-24	15-Jul-30	6.50	4.3	3.62	6.30 <span style="color: red;">▲ 3.7bps</span>	100.74	6.161	6.344	100.56	101.24	13-Apr-26	102.10	566.83	37
FR0052	20-Aug-09	15-Aug-30	10.50	4.3	3.50	6.35 <span style="color: green;">▼ -1.3bps</span>	115.51	6.012	6.437	115.16	116.91	13-Apr-26	112.87	0.00	1
FR0082	1-Aug-19	15-Sep-30	7.00	4.4	3.75	6.31 <span style="color: red;">▲ 3.7bps</span>	102.62	6.146	6.445	102.10	103.25	13-Apr-26	101.85	201.45	33
FRSDG001	27-Oct-22	15-Oct-30	7.38	4.5	3.70	5.60 <span style="color: black;">→ 0.0bps</span>	106.99	5.180	5.818	106.09	108.72	13-Feb-26	106.49	0.30	1
FR0087	13-Aug-20	15-Feb-31	6.50	4.8	4.07	6.31 <span style="color: red;">▲ 2.4bps</span>	100.76	6.221	6.374	100.51	101.14	13-Apr-26	100.69	449.34	37
<b>FR0109</b>	<b>15-Aug-25</b>	<b>15-Mar-31</b>	<b>5.88</b>	<b>4.9</b>	<b>4.19</b>	<b>6.29</b> <span style="color: red;">▲ 4.7bps</span>	<b>98.26</b>	<b>6.184</b>	<b>6.362</b>	<b>97.96</b>	<b>98.70</b>	<b>13-Apr-26</b>	<b>98.40</b>	<b>2,938.25</b>	<b>122</b>
FR0085	4-May-20	15-Apr-31	7.75	5.0	3.99	6.51 <span style="color: black;">→ 0.0bps</span>	105.22	5.945	6.583	104.91	107.72	10-Apr-26	107.00	0.30	3
FR0073	6-Aug-15	15-May-31	8.75	5.1	4.01	6.24 <span style="color: red;">▲ 3.5bps</span>	110.77	6.000	6.270	110.65	111.90	13-Apr-26	110.75	45.21	6
FR0054	22-Jul-10	15-Jul-31	9.50	5.3	4.11	6.52 <span style="color: black;">→ 0.0bps</span>	113.04	6.036	6.638	112.51	115.39	13-Apr-26	114.35	5.00	1
FR0091	8-Jul-21	15-Apr-32	6.38	6.0	4.77	6.47 <span style="color: red;">▲ 0.6bps</span>	99.52	6.365	6.602	98.89	100.05	13-Apr-26	98.50	224.90	39
FR0058	21-Jul-11	15-Jun-32	8.25	6.2	4.74	6.49 <span style="color: green;">▼ -3.7bps</span>	108.83	6.135	6.773	107.34	110.72	13-Apr-26	107.50	0.95	2
FR0074	10-Nov-16	15-Aug-32	7.50	6.3	4.98	6.52 <span style="color: green;">▼ -0.8bps</span>	104.99	6.427	6.580	104.69	105.51	13-Apr-26	106.55	11.58	6
FR0096	19-Aug-22	15-Feb-33	7.00	6.8	5.34	6.52 <span style="color: red;">▲ 1.6bps</span>	102.63	6.451	6.682	101.71	102.99	13-Apr-26	102.65	1,370.55	45
FR0065	30-Aug-12	15-May-33	6.63	7.1	5.44	6.65 <span style="color: green;">▼ -0.5bps</span>	99.83	6.331	6.775	99.16	101.65	13-Apr-26	99.70	25.50	38
FR0100	24-Aug-23	15-Feb-34	6.63	7.8	5.99	6.57 <span style="color: red;">▲ 2.2bps</span>	100.34	6.467	6.838	98.71	100.95	13-Apr-26	100.40	99.70	52
FR0068	1-Aug-13	15-Mar-34	8.38	7.9	5.83	6.63 <span style="color: red;">▲ 0.1bps</span>	110.60	6.499	6.861	109.13	111.47	13-Apr-26	111.70	5.51	8
FR0080	4-Jul-19	15-Jun-35	7.50	9.2	6.50	6.63 <span style="color: red;">▲ 1.6bps</span>	105.91	6.542	6.841	104.42	106.52	13-Apr-26	105.95	27.94	40
FR0103	29-Jul-25	15-Jul-35	6.75	9.3	6.71	6.65 <span style="color: red;">▲ 2.7bps</span>	100.68	6.504	6.893	99.02	101.67	13-Apr-26	101.50	738.05	69
<b>FR0108</b>	<b>31-Jul-25</b>	<b>15-Apr-36</b>	<b>6.50</b>	<b>10.0</b>	<b>7.04</b>	<b>6.58</b> <span style="color: red;">▲ 2.7bps</span>	<b>99.46</b>	<b>6.466</b>	<b>6.803</b>	<b>97.82</b>	<b>100.24</b>	<b>13-Apr-26</b>	<b>101.00</b>	<b>1,196.99</b>	<b>235</b>
FR0072	9-Jul-15	15-May-36	8.25	10.1	6.78	6.66 <span style="color: red;">▲ 2.0bps</span>	111.53	6.610	6.851	110.06	111.93	13-Apr-26	111.53	231.80	11
FR0088	7-Jan-21	15-Jun-36	6.25	10.2	7.24	6.64 <span style="color: red;">▲ 1.2bps</span>	97.11	6.342	6.874	95.48	99.31	13-Apr-26	99.30	75.65	52
FR0045	24-May-07	15-May-37	9.75	11.1	6.98	6.70 <span style="color: red;">▲ 2.7bps</span>	123.63	6.384	6.832	122.42	126.45	1-Apr-26	124.90	0.00	2
FR0093	6-Jan-22	15-Jul-37	6.38	11.3	7.78	6.66 <span style="color: red;">▲ 2.6bps</span>	97.75	6.493	6.799	96.69	99.06	13-Apr-26	99.17	119.41	37
FR0075	10-Aug-17	15-May-38	7.50	12.1	7.78	6.76 <span style="color: black;">→ 0.0bps</span>	106.02	6.725	6.855	105.24	106.33	13-Apr-26	105.60	16.72	15
FR0098	15-Sep-22	15-Jun-38	7.13	12.2	7.95	6.75 <span style="color: red;">▲ 1.4bps</span>	103.04	6.690	6.872	102.05	103.57	13-Apr-26	102.00	11.18	27
FR0050	24-Jan-08	15-Jul-38	10.50	12.3	7.48	6.51 <span style="color: green;">▼ -0.2bps</span>	133.34	6.310	6.569	132.72	135.38	10-Apr-26	129.60	0.00	2
FR0079	7-Jan-19	15-Apr-39	8.38	13.0	7.92	6.76 <span style="color: red;">▲ 0.5bps</span>	113.80	6.724	6.858	112.92	114.17	13-Apr-26	115.50	20.44	13
FR0083	7-Nov-19	15-Apr-40	7.50	14.0	8.47	6.80 <span style="color: red;">▲ 0.1bps</span>	106.30	6.752	6.894	105.39	106.70	13-Apr-26	106.70	183.93	24
<b>FR0106</b>	<b>9-Jan-25</b>	<b>15-Aug-40</b>	<b>7.13</b>	<b>14.3</b>	<b>8.91</b>	<b>6.72</b> <span style="color: green;">▼ -0.6bps</span>	<b>103.65</b>	<b>6.695</b>	<b>6.879</b>	<b>102.21</b>	<b>103.92</b>	<b>13-Apr-26</b>	<b>103.55</b>	<b>238.02</b>	<b>25</b>
FR0057	21-Apr-11	15-May-41	9.50	15.1	8.48	6.78 <span style="color: green;">▼ -3.8bps</span>	125.44	6.716	6.853	124.64	126.14	9-Apr-26	124.20	5.00	1
FR0062	9-Feb-12	15-Apr-42	6.38	16.0	9.48	6.79 <span style="color: green;">▼ -2.4bps</span>	95.97	6.677	6.907	94.89	97.05	13-Apr-26	97.50	13.75	26
FR0092	8-Jul-21	15-Jun-42	7.13	16.2	9.44	6.75 <span style="color: green;">▼ -1.1bps</span>	103.66	6.701	6.895	102.21	104.14	13-Apr-26	103.00	16.54	34
FR0097	19-Aug-22	15-Jun-43	7.13	17.2	9.75	6.74 <span style="color: green;">▼ -1.0bps</span>	103.90	6.680	6.900	102.23	104.49	13-Apr-26	102.50	19.83	31
FR0067	18-Jul-13	15-Feb-44	8.75	17.8	9.63	6.80 <span style="color: green;">▼ -3.1bps</span>	119.99	6.658	7.001	117.65	121.64	9-Apr-26	118.35	3.24	1
<b>FR0107</b>	<b>9-Jan-25</b>	<b>15-Aug-45</b>	<b>7.13</b>	<b>19.3</b>	<b>10.53</b>	<b>6.66</b> <span style="color: green;">▼ -0.6bps</span>	<b>104.96</b>	<b>6.645</b>	<b>6.844</b>	<b>102.97</b>	<b>105.17</b>	<b>13-Apr-26</b>	<b>105.10</b>	<b>312.66</b>	<b>41</b>
FR0076	22-Sep-17	15-May-48	7.38	22.1	10.83	6.85 <span style="color: green;">▼ -0.8bps</span>	105.94	6.738	6.955	104.70	107.26	13-Apr-26	106.15	196.28	101
FR0089	7-Jan-21	15-Aug-51	6.88	25.3	11.81	6.86 <span style="color: green;">▼ -1.8bps</span>	100.15	6.692	6.993	98.59	102.21	13-Apr-26	100.50	77.12	160
FR0102	5-Jan-24	15-Jul-54	6.88	28.3	12.23	6.84 <span style="color: red;">▲ 0.2bps</span>	100.47	6.676	6.941	99.17	102.50	13-Apr-26	98.29	125.02	64
FR0105	27-Aug-24	15-Jul-64	6.88	38.3	13.30	6.82 <span style="color: green;">▼ -0.5bps</span>	100.67	6.588	6.952	98.96	103.98	14-Apr-25	99.00	0.10	1
ORI024T6	8-Nov-23	15-Oct-29	6.35	3.5	-	6.30 <span style="color: red;">▲ 0.5bps</span>	100.17	5.838	6.336	100.04	101.62	13-Apr-26	103.55	7.03	14
ORI025T6	28-Feb-24	15-Feb-30	6.40	3.8	-	6.28 <span style="color: green;">▼ -2.3bps</span>	100.42	5.830	6.346	100.18	101.96	13-Apr-26	99.60	3.38	13
ORI026T6	30-Oct-24	15-Oct-30	6.40	4.5	-	6.33 <span style="color: red;">▲ 16.8bps</span>	100.30	5.580	6.218	100.71	103.26	13-Apr-26	100.90	1.00	2
PBS003	2-Feb-12	15-Jan-27	6.00	0.8	0.72	5.67 <span style="color: red;">▲ 2.7bps</span>	100.23	5.544	6.182	99.86	100.32	13-Apr-26	100.26	1,829.68	178
PBS020	22-Oct-18	15-Oct-27	9.00	1.5	1.35	5.45 <span style="color: green;">▼ -27.1bps</span>	105.06	5.540	6.178	104.00	104.93	31-Jul-24	108.25	0.50	1
PBS018	4-Jun-18	15-May-28	7.63	2.1	1.86	5.66 <span style="color: green;">▼ -22.4bps</span>	103.80	5.626	6.264	102.62	103.88	3-Sep-19	99.29	2,000.00	2
<b>PBS030</b>	<b>4-Jun-21</b>	<b>15-Jul-28</b>	<b>5.88</b>	<b>2.3</b>	<b>2.06</b>	<b>6.03</b> <span style="color: red;">▲ 2.2bps</span>	<b>99.67</b>	<b>5.362</b>	<b>6.000</b>	<b>99.73</b>	<b>101.07</b>	<b>13-Apr-26</b>	<b>99.73</b>	<b>3,842.25</b>	<b>155</b>
PBSG001	22-Sep-22	15-Sep-29	6.63	3.4	3.01	6.13 <span style="color: green;">▼ -7.0bps</span>	101.50	5.746	6.290	101.01	102.69	13-Apr-26	101.53		

PRICE INDEX



YIELD INDEX



TECHNICAL ANALYSIS

FR0109

INDICATORS	13-Apr-26	-1 Day	Change
Last Price	98.26	98.46	(0.19)
DI+	28.27	30.35	(2.08)
DI-	36.76	36.35	0.41
ADX (15D)	47.89	50.38	(2.49)
A/D	-28,613.62	-30,010.64	1,397.02
CMF(20D)	-0.340	-0.353	0.01
CCI	37.24	35.20	2.04
Volume (IDR bn)	2,938.25	332.37	2,605.88
Frequency	122	98	24

COMMENT

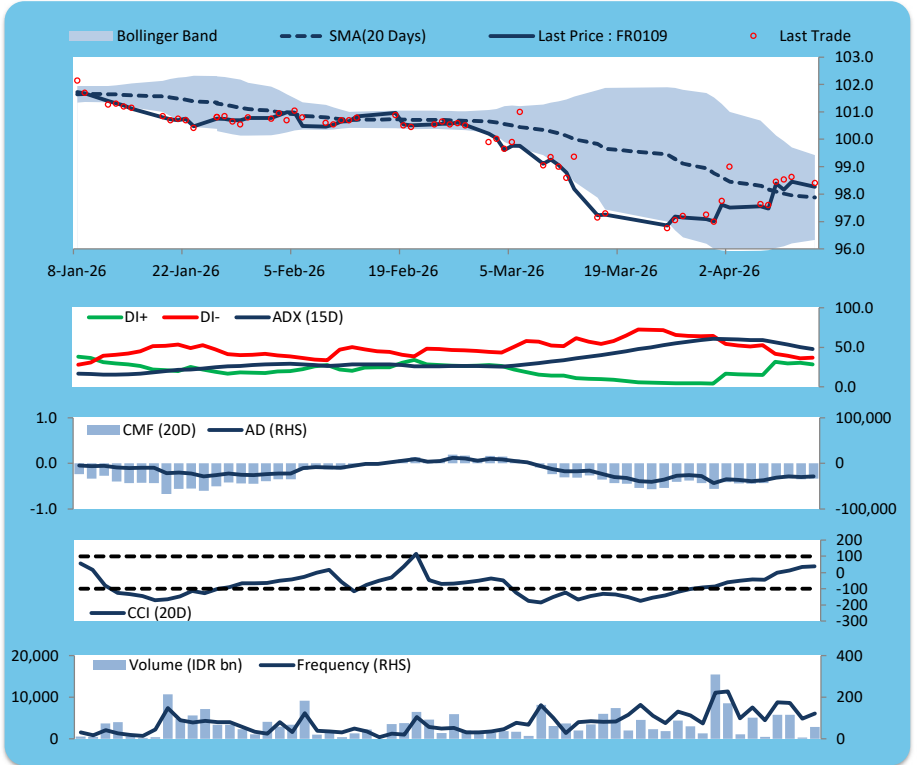
Price declined; heavy trade volume; downward trend continues to strengthen; selling pressure eased; CCI increased.

SELL

FEATURES

Issue Date	14-Aug-25
Mature Date	15-Mar-31
Tenor	4.9
Coupon Rate	5.88
Last Yield	6.29
Modified Duration	4.19
Previous Coupon Date	15-Mar-26
Next Coupon Date	15-Sep-26

Sources: Bloomberg (Price); IDX



FR0108

INDICATORS	13-Apr-26	-1 Day	Change
Last Price	99.46	99.66	(0.20)
DI+	34.57	34.78	(0.21)
DI-	26.30	28.28	(1.98)
ADX (15D)	35.38	36.94	(1.56)
A/D	7,042.33	6,539.70	502.63
CMF(20D)	0.137	0.126	0.01
CCI	98.25	100.08	(1.83)
Volume (IDR bn)	1,196.99	1,841.95	(644.96)
Frequency	235	175	60

COMMENT

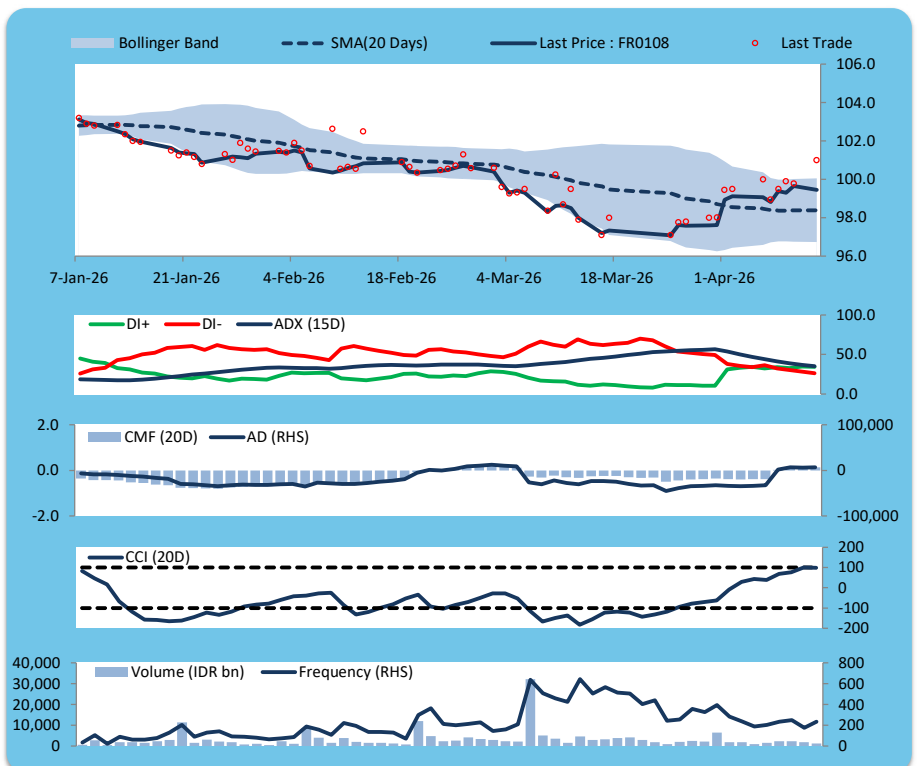
Price declined; heavy trade volume; upward trend continues to strengthen; buying pressure increased; CCI declined.

SELL

FEATURES

Issue Date	31-Jul-25
Mature Date	15-Apr-36
Tenor	10.0
Coupon Rate	6.50
Last Yield	6.57
Modified Duration	7.04
Previous Coupon Date	15-Oct-25
Next Coupon Date	15-Apr-26

Sources: Bloomberg (Price); IDX



FR0106

INDICATORS	13-Apr-26	-1 Day	Change
Last Price	103.65	103.59	0.06
DI+	40.01	41.18	(1.18)
DI-	33.62	33.05	0.58
ADX (15D)	37.68	39.75	(2.07)
A/D	1,615.01	1,372.81	242.21
CMF(20D)	0.110	0.095	0.01
CCI	103.73	108.34	(4.61)
Volume (IDR bn)	238.02	400.45	(162.44)
Frequency	25	22	3

COMMENT

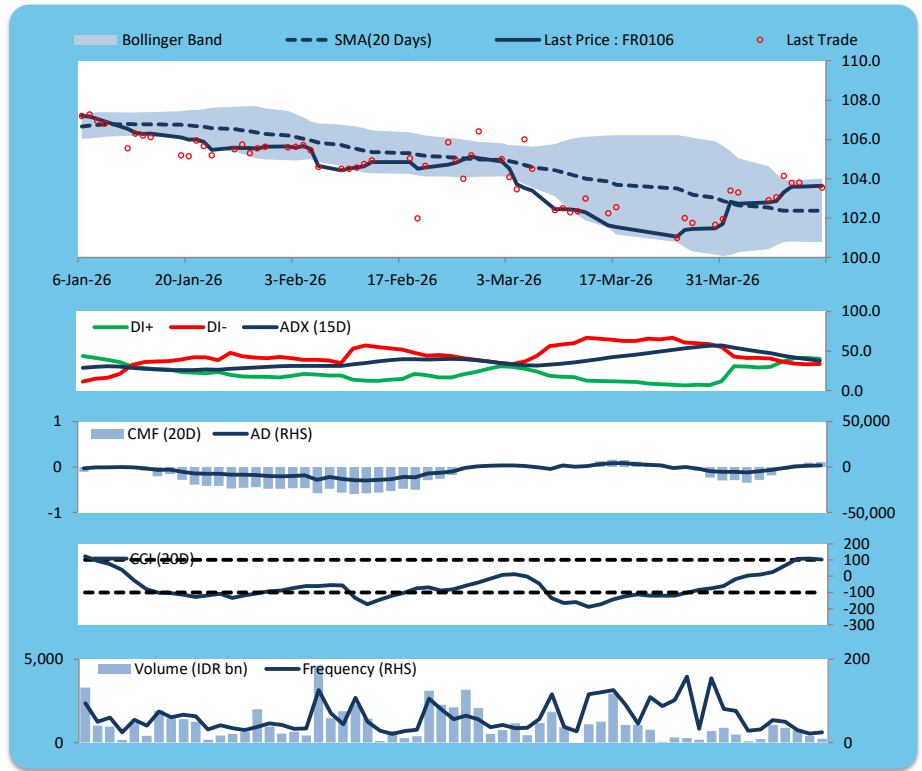
Price increased; moderate trade volume; downward trend continues to weaken; buying pressure increased; CCI declined.

HOLD

FEATURES

Issue Date	9-Jan-25
Mature Date	15-Aug-40
Tenor	14.3
Coupon Rate	7.13
Last Yield	6.72
Modified Duration	8.91
Previous Coupon Date	15-Feb-26
Next Coupon Date	15-Aug-26

Sources: Bloomberg (Price); IDX



FR0107

INDICATORS	13-Apr-26	-1 Day	Change
Last Price	104.97	104.91	0.06
DI+	42.87	43.59	(0.72)
DI-	27.30	28.41	(1.10)
ADX (15D)	34.79	35.69	(0.90)
A/D	1,892.96	1,213.27	679.68
CMF(20D)	0.149	0.090	0.06
CCI	132.93	138.12	(5.19)
Volume (IDR bn)	312.66	191.02	121.64
Frequency	41	32	9

COMMENT

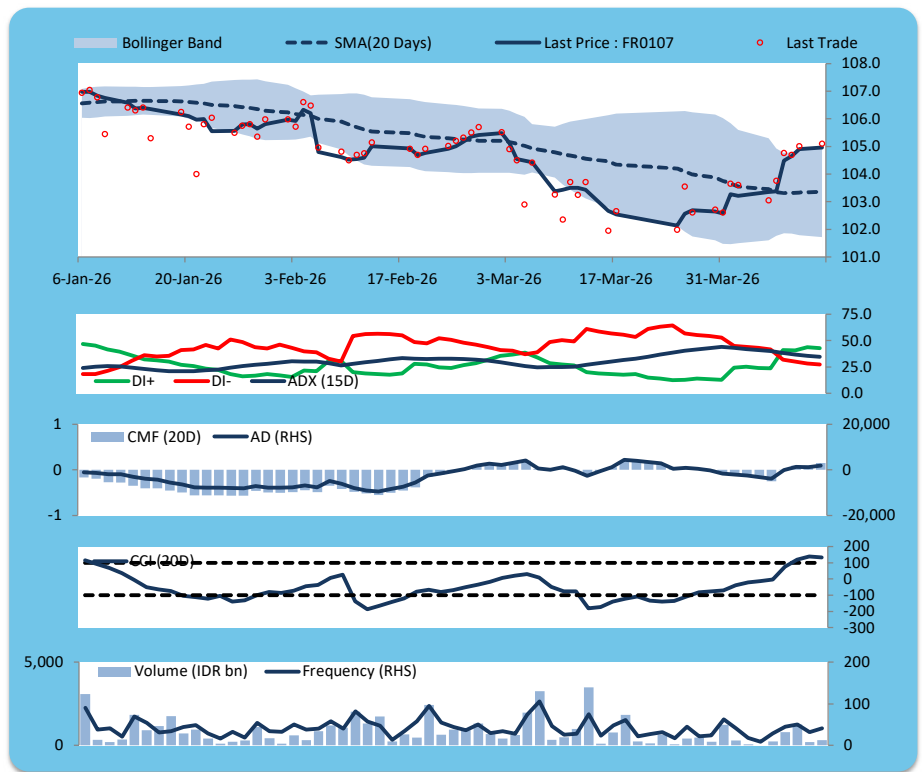
Price increased; moderate trade volume; upward trend continues to weaken; buying pressure increased; CCI declined.

BUY

FEATURES

Issue Date	9-Jan-25
Mature Date	15-Aug-45
Tenor (year)	19.3
Coupon Rate	7.13
Last Yield	6.66
Modified Duration	10.53
Previous Coupon Date	15-Feb-26
Next Coupon Date	15-Aug-26

Sources: Bloomberg (Price); IDX



**ECONOMIC AND FIXED INCOME RESEARCH TEAM****Chief Economist and Head Fixed Income Research**

Helmy Kristanto	helmy.kristanto@brids.co.id	(62-21) 5091 4100 ext. 3400
-----------------	-----------------------------	-----------------------------

**Economists**

Relindya Yuriswari Salehaningtyas	relindya.salehaningtyas@brids.co.id	(62-21) 5091 4100 ext. 3609
Ebenezer Mesotuhu Harefa	ebenezer.harefa@brids.co.id	(62-21) 5091 4100 ext. 3609

**Credit Analyst**

Laras Nerpatari Suliyas	laras.nerpatari@brids.co.id	(62-21) 5091 4100 ext. 3403
-------------------------	-----------------------------	-----------------------------

**Production & Database Management**

Eka Nuraini	ekan@brids.co.id	(62-21) 5091 4100 ext. 3407
Faiqul Kurnia Muslim	faiqul.muslim@brids.co.id	(62-21) 5091 4100 ext. 3402

**INSTITUTIONAL DEBT SALES & TRADING TEAM****Head of Debt Capital Market**

Yopi Chandra Wardhani	yopi.wardhani@brids.co.id	(62-21) 5091 4100 ext. 3220
-----------------------	---------------------------	-----------------------------

**Debt Sales**

Rachmat Eko Putranto	rachmat.putranto@brids.co.id	(62-21) 5091 4100 ext. 3218
Rafi Hutama Soeriaatmadja	rafi.soeriaatmadja@brids.co.id	(62-21) 5091 4100 ext. 3926
Adzkia Zahra	adzkia.zahra@brids.co.id	(62-21) 5091 4100 ext. 3924

**Debt Brokerage**

Citra Isramij P.	citra.isramij@brids.co.id	(62-21) 5091 4100 ext. 3228
Sisca Emilia	sisca.emilia@brids.co.id	(62-21) 5091 4100 ext. 3921
Deviano Sujitno	deviano.sujitno@brids.co.id	(62-21) 5091 4100 ext. 3925

**DISCLAIMER:** The information contained in this report has been taken from sources which we deem reliable. However, none of P.T. BRI Danareksa Sekuritas and/or its affiliated companies and/or their respective employees and/or agents makes any representation or warranty (express or implied) or accepts any responsibility or liability as to, or in relation to, the accuracy or completeness of the information and opinions contained in this report or as to any information contained in this report or any other such information or opinions remaining unchanged after the issue thereof. We expressly disclaim any responsibility or liability (express or implied) of P.T. BRI Danareksa Sekuritas, its affiliated companies and their respective employees and agents whatsoever and howsoever arising (including, without limitation for any claims, proceedings, action, suits, losses, expenses, damages or costs) which may be brought against or suffered by any person as a result of acting in reliance upon the whole or any part of the contents of this report and neither P.T. BRI Danareksa Sekuritas, its affiliated companies or their respective employees or agents accepts liability for any errors, omissions or mis-statements, negligent or otherwise, in the report and any liability in respect of the report or any inaccuracy therein or omission therefrom which might otherwise arise is hereby expressly disclaimed. The information contained in this report is not to be taken as any recommendation made by P.T. BRI Danareksa Sekuritas or any other person to enter into any agreement with regard to any investment mentioned in this document. This report is prepared for general circulation. It does not have regard to the specific person who may receive this report. In considering any investments you should make your own independent assessment and seek your own professional financial and legal advice.