

MOST ACTIVE GOVERNMENT BONDS

Bond	Coupon	Maturity	Last Price	Yield	Volume (IDR bn)
FR0103	6.750	15-Jul-35	97.30	7.120	4,633.56
FR0104	6.500	15-Jul-30	98.24	6.911	2,564.78
PBS003	6.000	15-Jan-27	98.80	6.878	2,047.31
FR0100	6.625	15-Feb-34	99.00	7.115	1,743.90
FR0098	7.125	15-Jun-38	98.84	7.278	1,647.56
FR0059	7.000	15-May-27	100.20	6.779	1,328.57
FR0096	7.000	15-Feb-33	99.30	7.098	1,151.68
FR0106	7.125	15-Aug-40	101.70	7.083	913.92
FR0078	8.250	15-May-29	104.70	6.869	778.28
FR0064	6.125	15-May-28	97.90	6.821	649.13

Coupon, Last Price & Yield are in %; Volume is in IDR bn; Rating code: id(Pefindo) & idn (Fitch Indonesia)
Sources: Bloomberg; Indonesia Stock Exchange (Volume)

MOST ACTIVE CORPORATE BONDS

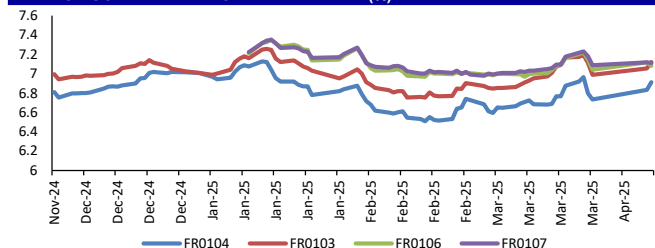
Bond	Rating	Coupon	Maturity	Last Price	Yield	Volume
OPPM02ACN1	A+	7.000	5-Apr-26	100.01	7.00	472.00
FIFA03ACN4	AAA	6.550	16-Sep-25	100.03	6.55	400.00
PJAA03ACN1	A+	8.500	9-Jul-27	101.76	7.64	370.00
INKP05BCN1	A+	10.750	4-Oct-29	106.04	9.09	358.00
MDKA03BCN3	A	8.250	1-Sep-25	99.96	8.25	260.00
SMINKP04BCN2	A+	10.250	5-Dec-27	99.84	10.32	258.00
SIMORA02ACN1	A+	10.000	13-Jul-26	102.13	8.20	236.00
SMINKP03BCN2	A+	10.250	25-Aug-26	103.31	7.69	234.00
SMDSSA01CCN3	AA	8.875	26-Nov-29	101.91	8.37	207.10
BAFI03ACN2	AAA	6.400	6-Dec-25	100.25	6.38	200.00

SOVEREIGN BOND YIELDS

Country	Tenor	Coupon (%)	Spread over UST YC (bps)					
			9-Apr-25	MA LTM as of Mar	MA LTM as of Feb			
United States	2yr		4.97	4.97	4.85			
USD	5yr		4.64	4.64	4.54			
	10yr		4.37	4.37	4.19			
German	2yr	0.25	1.75	2.07	2.03	-365	-333	-335
EUR	5yr	1.00	2.11	2.37	2.15	-253	-227	-239
	10yr	1.75	2.61	2.77	2.41	-176	-160	-178
Indonesia	2yr	4.35	-	4.68	4.62	-	-72	-75
USD	5yr	3.85	-	5.04	4.90	-	40	36
	10yr	8.50	-	5.50	5.35	-	113	116
Brazil	2yr	0.00	14.35	14.97	15.07	895	957	970
BRL	3yr	0.00	14.23	14.82	15.04	883	942	967
	10yr	10.00	14.94	15.13	15.27	954	973	990
Philippines	2yr	6.00	5.79	5.75	5.83	39	35	46
PHP	5yr	7.88	5.98	6.01	6.09	134	137	155
	10yr	11.38	6.12	6.25	6.16	175	188	197
Thailand	2yr	3.13	1.57	1.78	1.93	-384	-362	-344
THB	5yr	3.45	1.61	1.82	1.97	-303	-282	-258
	10yr	3.63	1.91	2.07	2.16	-246	-230	-203
India	2yr	7.59	6.18	-	6.59	78	-	122
INR	5yr	7.28	6.27	6.49	6.65	163	185	211
	10yr	8.83	6.46	6.59	6.72	209	222	253
Malaysia	3yr	3.17	3.40	3.40	3.44	-157	-157	-141
MYR	5yr	3.26	3.50	3.58	3.60	-115	-106	-94
	10yr	4.18	3.78	3.78	3.80	-59	-59	-39

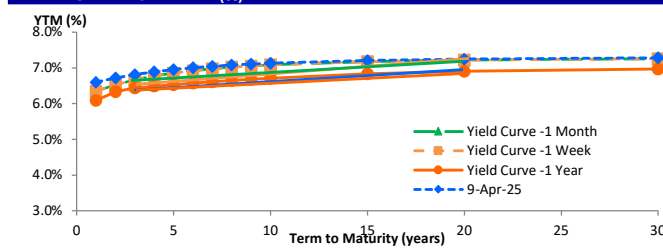
Sources: Bloomberg (Current Yield Curve), US Treasury

YIELD OF GOVERNMENT BOND BENCHMARK (%)



Source : DJPPR

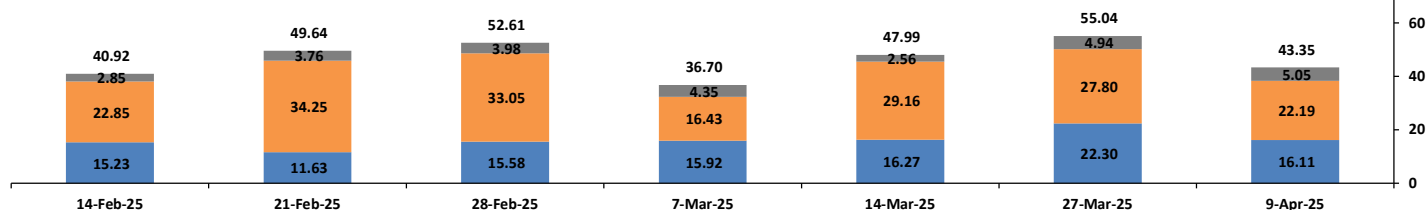
YIELD CURVE MOVEMENT (%)



Source : Bloomberg

TRADING VOLUME BY MATURITY (IDR TRILLION)

Govt Bonds : IDR43,351 bn
 Govt Bonds > 15 yrs : IDR5,047 bn
 Govt Bonds 5 - 15 yrs : IDR22,192 bn
 Govt Bonds < 5 yrs : IDR16,113 bn



Sources: Indonesia Stock Exchange

CURRENCY

Price	9-Apr-25	-1 Day	-1 Week	-1 Month	EoP2024
DX	102.40	↓	102.96	103.81	101.33
USD : IDR	16,865	→	16,865	16,560	15,397
EUR : USD	1.10	↑	1.10	1.08	1.10
JPY : USD	145.40	↓	146.27	149.28	141.04
USD : CNY	7.350	↑	7.339	7.268	7.100
USD : SGD	4.502	↑	4.492	4.453	4.594
SGD : IDR	12,520	↑	12,509	12,436	11,677

Source : Bloomberg

COMMODITY

Price	9-Apr-25	-1 Day	-1 Week	-1 Month	EoP2024
CPO	4,490	↓	4,564	4,842	4,870
Coal	98.00	→	98.00	101.00	103.25
Gold	3,046	↑	2,983	3,134	2,909
Nickel	13,980	→	13,980	15,782	16,316
Copper	420.45	↑	414.40	504.05	468.30
Brent	66.15	↓	66.66	77.33	72.05
Metal	3,046.15	↑	2,983.27	3,134.17	2,909.10

SBN HOLDING - (IDR tn)

	08-Apr-2025	WoW	Mtd	YTD
Banks	1,144.3	22.4	22.4	92.8
Bank Indonesia (exclude repo)	1,614.2	(28.9)	(28.9)	(3.8)
Non-Banks:	3,471.8	1.7	1.7	101.7
Mutual Fund	187.0	0.6	0.6	0.0
Insurance & Pension Fund	1,183.1	(0.3)	(0.3)	37.8
Foreign Investor	893.5	1.6	1.6	16.8
Individual	567.8	0.2	0.2	25.3
Others	640.4	(0.4)	(0.4)	21.7
Total	6,230.2	(4.8)	(4.8)	190.7
Domestic Investor	3,722.6	22.4	22.4	177.7
Foreign Investor	893.5	1.6	1.6	16.8
Bank Indonesia (include repo)	1,547.4	(3.6)	(3.6)	60.6

Source : DJPPR (Processed)

PHEI FAIR SPREAD

	1Y	2Y	3Y	4Y	5Y	6Y	7Y	8Y	9Y	10Y
AAA	29	29	31	33	37	40	43	46	48	49
AA+	39	44	48	53	58	62	67	70	73	76
AA	61	71	78	85	91	97	102	106	109	112
AA-	102	118	129	138	146	151	156	159	161	163
A+	155	179	193	205	214	219	223	225	226	226
A	209	240	258	272	283	289	293	294	294	294
A-	254	292	314	331	344	353	358	360	362	362
BBB+	293	337	362	383	398	410	418	423	427	429
BBB	327	377	407	430	449	465	476	485	491	495

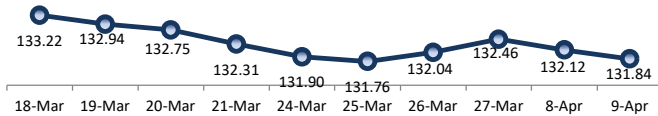
*interpolated, as of April 09, 2025 (bps)

Sources : PHEI, Bloomberg

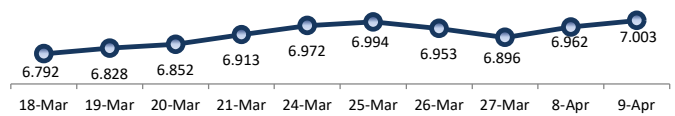
VALUATIONS OF GOVERNMENT BONDS

Bond	Issue Date	Mature Date	Coupon	TTM	Modified Duration	YTM (Change)	Prev Closing Price	Fair Yield Range	Fair Price Range	Last Trade						
										Date	Price	Vol (IDR bn)	Freq			
FR0037	18-May-06	15-Sep-26	12.00	1.4	1.31	6.64	↑ 4.7bps	107.17	6.573	6.742	107.05	107.29	8-Apr-25	107.14	2.00	2
FR0056	23-Sep-10	15-Sep-26	8.38	1.4	1.33	6.68	↑ 5.8bps	102.26	6.622	6.699	102.24	102.35	9-Apr-25	102.05	19.72	38
FR0090	8-Jul-21	15-Apr-27	5.13	2.0	1.83	6.74	↑ 1.6bps	97.01	6.721	6.809	96.87	97.04	9-Apr-25	94.50	268.04	42
FR0059	15-Sep-11	15-May-27	7.00	2.1	1.87	6.78	↑ 5.7bps	100.42	6.700	6.827	100.32	100.57	9-Apr-25	100.20	1,328.57	42
FR0042	25-Jan-07	15-Jul-27	10.25	2.3	1.98	6.73	↑ 1.8bps	107.25	6.711	6.805	107.11	107.31	8-Apr-25	106.72	3.64	4
FR0094	4-Mar-22	15-Jan-28	5.60	2.8	2.48	6.82	↓ -8.0bps	96.97	6.838	7.092	96.30	96.91	7-Mar-25	95.00	1.87	1
FR0047	30-Aug-07	15-Feb-28	10.00	2.9	2.45	6.76	↑ 3.8bps	108.26	6.672	6.993	107.64	108.50	9-Apr-25	108.07	0.02	4
FR0064	13-Aug-12	15-May-28	6.13	3.1	2.71	6.82	↑ 5.6bps	98.08	6.736	6.839	98.03	98.31	9-Apr-25	97.90	649.13	41
FR0095	19-Aug-22	15-Aug-28	6.38	3.4	2.94	6.80	↑ 4.7bps	98.72	6.737	6.828	98.65	98.92	9-Apr-25	98.54	502.57	32
FR0099	27-Jan-23	15-Jan-29	6.40	3.8	3.25	6.45	→ 0.0bps	99.83	6.447	6.890	98.39	99.83	25-Sep-23	99.77	139.50	19
FR0071	12-Sep-13	15-Mar-29	9.00	3.9	3.29	6.92	↑ 9.7bps	107.02	6.819	6.911	107.08	107.40	9-Apr-25	106.90	581.28	6
FR0101	2-Nov-23	15-Apr-29	6.88	4.0	3.35	6.85	↑ 5.6bps	100.09	6.798	6.882	99.97	100.26	9-Apr-25	99.90	81.96	16
FR0078	27-Sep-18	15-May-29	8.25	4.1	3.35	6.87	↑ 7.8bps	104.85	6.816	6.894	104.76	105.04	9-Apr-25	104.70	778.28	21
FR0104	22-Aug-24	15-Jul-30	6.50	5.3	4.32	6.91	↑ 7.8bps	98.20	6.827	6.984	97.88	98.56	9-Apr-25	98.24	2,564.78	92
FR0052	20-Aug-09	15-Aug-30	10.50	5.4	4.12	6.89	↑ 2.8bps	115.90	6.847	7.063	115.09	116.13	9-Apr-25	116.97	0.03	5
FR0082	1-Aug-19	15-Sep-30	7.00	5.4	4.44	6.95	↑ 7.0bps	100.20	6.873	6.978	100.09	100.56	9-Apr-25	99.89	240.69	32
FRSDG001	27-Oct-22	15-Oct-30	7.38	5.5	4.34	6.75	↑ 0.6bps	102.83	6.715	6.960	101.87	103.00	9-Apr-25	102.00	45.00	1
FR0087	13-Aug-20	15-Feb-31	6.50	5.9	4.74	6.99	↑ 2.5bps	97.66	6.949	7.028	97.49	97.86	9-Apr-25	97.25	485.71	54
FR0085	4-May-20	15-Apr-31	7.75	6.0	4.62	6.91	↓ -6.6bps	104.09	6.771	7.040	103.43	104.77	8-Apr-25	103.37	29.95	2
FR0073	6-Aug-15	15-May-31	8.75	6.1	4.60	7.02	↑ 3.0bps	108.45	6.983	7.059	108.25	108.65	9-Apr-25	108.20	538.77	18
FR0054	22-Jul-10	15-Jul-31	9.50	6.3	4.70	6.99	↑ 4.4bps	112.56	6.911	7.146	111.71	112.97	9-Apr-25	113.00	0.00	2
FR0091	8-Jul-21	15-Apr-32	6.38	7.0	5.37	7.07	↑ 3.8bps	96.20	6.984	7.070	96.21	96.66	9-Apr-25	96.01	187.67	80
FR0058	21-Jul-11	15-Jun-32	8.25	7.2	5.29	7.14	↑ 2.6bps	106.16	6.991	7.139	106.15	107.00	9-Apr-25	106.71	10.08	5
FR0074	10-Nov-16	15-Aug-32	7.50	7.4	5.55	7.12	↑ 2.9bps	102.14	7.026	7.149	101.96	102.68	9-Apr-25	102.10	13.95	11
FR0096	19-Aug-22	15-Feb-33	7.00	7.9	5.90	7.10	↑ 1.6bps	99.41	7.036	7.154	99.07	99.77	9-Apr-25	99.30	1,151.68	77
FR0065	30-Aug-12	15-May-33	6.63	8.1	5.98	7.12	↑ 5.3bps	97.00	7.047	7.137	96.88	97.42	9-Apr-25	97.05	85.77	48
FR0100	24-Aug-23	15-Feb-34	6.63	8.9	6.50	7.12	↑ 5.3bps	96.81	7.017	7.147	96.61	97.48	9-Apr-25	99.00	1,743.90	91
FR0068	1-Aug-13	15-Mar-34	8.38	8.9	6.31	7.17	↑ 5.6bps	107.81	7.090	7.206	107.60	108.39	9-Apr-25	107.75	149.19	29
FR0080	4-Jul-19	15-Jun-35	7.50	10.2	6.92	7.18	↑ 3.6bps	102.28	7.134	7.186	102.23	102.60	9-Apr-25	102.17	503.68	46
FR0103	8-Aug-24	15-Jul-35	6.75	10.3	7.16	7.12	↑ 6.5bps	97.32	7.039	7.224	96.59	97.90	9-Apr-25	97.30	4,633.56	244
FR0072	9-Jul-15	15-May-36	8.25	11.1	7.13	7.27	↑ 5.0bps	107.35	7.115	7.317	107.00	108.60	9-Apr-25	107.05	331.70	48
FR0088	7-Jan-21	15-Jun-36	6.25	11.2	7.64	7.17	↑ 5.5bps	92.97	7.087	7.195	92.81	93.60	9-Apr-25	92.20	11.67	33
FR0045	24-May-07	15-May-37	9.75	12.1	7.32	7.06	↑ 2.9bps	121.66	6.993	7.265	119.77	122.25	9-Apr-25	121.29	0.00	1
FR0093	6-Jan-22	15-Jul-37	6.38	12.3	8.14	7.15	↑ 1.1bps	93.75	7.014	7.223	93.16	94.79	9-Apr-25	94.07	47.19	36
FR0075	10-Aug-17	15-May-38	7.50	13.1	8.08	7.24	↑ 2.4bps	102.21	7.177	7.259	102.01	102.70	9-Apr-25	100.70	40.93	26
FR0098	15-Sep-22	15-Jun-38	7.13	13.2	8.24	7.28	↑ 4.3bps	98.71	7.149	7.266	98.80	99.78	9-Apr-25	98.84	1,647.56	322
FR0050	24-Jan-08	15-Jul-38	10.50	13.3	7.69	7.24	↑ 4.4bps	127.51	7.064	7.293	126.95	129.26	27-Mar-25	129.65	0.00	2
FR0079	7-Jan-19	15-Apr-39	8.38	14.0	8.16	7.23	↑ 1.3bps	109.96	7.162	7.287	109.45	110.62	9-Apr-25	108.00	6.50	13
FR0083	7-Nov-19	15-Apr-40	7.50	15.0	8.69	7.25	↑ 2.0bps	102.28	7.232	7.294	101.85	102.43	9-Apr-25	100.50	147.64	56
FR0057	21-Apr-11	15-May-41	9.50	16.1	8.66	7.20	↑ 0.2bps	121.72	7.126	7.324	120.37	122.51	8-Apr-25	121.60	0.06	1
FR0106	9-Jan-25	15-Aug-40	7.13	15.4	9.17	7.08	↓ -3.4bps	100.38	7.099	7.270	98.66	100.23	9-Apr-25	101.70	913.92	89
FR0062	9-Feb-12	15-Apr-42	6.38	17.0	9.62	7.26	↑ 4.5bps	91.44	7.079	7.346	90.65	93.10	9-Apr-25	90.50	2.37	10
FR0092	8-Jul-21	15-Jun-42	7.13	17.2	9.56	7.24	↑ 4.3bps	98.87	7.221	7.273	98.55	99.05	9-Apr-25	99.25	221.91	92
FR0097	19-Aug-22	15-Jun-43	7.13	18.2	9.84	7.24	↑ 4.8bps	98.88	7.199	7.255	98.68	99.25	9-Apr-25	97.00	41.64	216
FR0067	18-Jul-13	15-Feb-44	8.75	18.9	9.73	7.20	↑ 2.6bps	115.79	7.202	7.301	114.69	115.81	8-Apr-25	116.90	5.78	9
FR0076	22-Sep-17	15-May-48	7.38	23.1	10.81	7.21	↑ 1.0bps	101.87	7.194	7.276	101.09	102.01	9-Apr-25	102.50	13.84	57
FR0107	9-Jan-25	15-Aug-45	7.13	20.4	10.56	7.11	↓ -0.7bps	100.15	7.130	7.270	98.46	99.93	9-Apr-25	98.30	572.11	45
FR0089	7-Jan-21	15-Aug-51	6.88	26.4	11.76	7.15	↑ 2.5bps	96.76	7.081	7.265	95.43	97.54	9-Apr-25	95.50	32.81	99
FR0102	5-Jan-24	15-Jul-54	6.88	29.3	12.08	7.15	↑ 2.9bps	96.65	7.100	7.237	95.61	97.23	9-Apr-25	96.25	67.89	64
FR0105	27-Aug-24	15-Jul-64	6.88	39.3	13.05	7.07	↓ -3.9bps	97.35	6.795	7.238	95.27	101.07	9-Apr-25	99.10	5.95	4
ORI024T6	8-Nov-23	15-Oct-29	6.35	4.5	-	6.67	↓ -35.8bps	98.75	6.640	7.073	97.21	98.87	9-Apr-25	98.95	5.65	19
ORI025T6	28-Feb-24	15-Feb-30	6.40	4.9	-	6.94	↓ -13.4bps	97.79	6.811	7.197	96.75	98.31	9-Apr-25	97.20	4.42	18
ORI026T6	30-Oct-24	15-Oct-30	6.40	5.5	-	6.81	↓ -1.0bps	98.14	6.771	6.845	97.96	98.30	9-Apr-25	98.55	0.58	6
PBS017	11-Jan-18	15-Oct-25	6.13	0.5	0.49	6.39	↓ -1.5bps	99.87	6.118	6.559	99.78	100.00	9-Apr-25	99.96	210.70	7
PBS032	29-Jul-21	15-Jul-26	4.88	1.3	1.19	6.74	↑ 1.7bps	97.77	6.669	6.875	97.60	97.84	9-Apr-25	99.00	142.83	292
PBS021	5-Dec-18	15-Nov-26	6.63	1.6	1.46	6.46	↑ 5.9bps	103.04	6.453	6.689	99.90	100.25	24-Mar-25	102.76	35.00	4
PBS003	2-Feb-12	15-Jan-27	6.00	1.8	1.63	6.88	↑ 11.5bps	98.55	6.688	6.919	98.48	98.86	9-Apr-25	98.80	2,047.31	313
PBS020	22-Oct-18	15-Oct-27	9.00	2.5	2.15	6.56	↑ 9.6bps	105.56	6.516	6.718	105.20	105.68	31-Jul-24	108.25	0.50	1
PBS018	4-Jun-18	15-May-28	7.63	3.1	2.66	6.61	↑ 11.0bps	102.79	6.543	6.793	102.28	102.98	3-Sep-19	99.29	2,000.00	2
PBS030	4-Jun-21	15-Jul-28	5.88	3.3	2.88	6.58	→ 0.0bps	97.94	6.598	6.880	97.09	97.89	9-Apr-25	97.45	4.28	32
PBSG001	22-Sep-22	15-Sep-29	6.63	4.4	3.77	6.62	↓ -25.2bps	100.02	6.598	7.014	98.53	100.09	25-Mar-25	98.82	6.10	1
IFR0006	1-Apr-10	15-Mar-30	10.25	4.9	3.91	6.71	↑ 10.7bps	114.64	6.597	6.920	113.71	115.16	26-Mar-25	112.52	4.00	1
PBS023	15-May-19	15-May-30	8.13	5.1	4.04	6.72	↑ 10.5bps	105.96	6.612	6.943	104.99	106.45	21-Feb-25	107.10	10.00	2
PBS012	28-Jan-16	15-Nov-31	8.88	6.6	4.89	6.79	↑ 10.3bps	110.92	6.666	7.005	109.74	111.63	26-Mar-25	110.70	40.00	6
PBS024	28-May-19	15-May-32	8.38	7.1	5.23	6.80	↑ 6.7bps	108.75	6.685	7.024	107.44	109.42	20-Dec-22	94.07	15.00	22
PBS025	29-May-19	15-May-33	8.38	8.1	5.76	6.88	↑ 4.3bps	109.18	6.770	7.110	107.68	109.87	25-Mar-25	108.48	120.85	3
PBS029	14-Jan-21	15-Mar-34	6.38	8.9	6.65	6.88	↓ -6.2bps	96.68	6.813	7.115	95.17	97.10	9-Apr-25	96.25	0.50	2
PBS0																

PRICE INDEX



YIELD INDEX



TECHNICAL ANALYSIS

FR0104

INDICATORS	9-Apr-25	-1 Day	Change
Last Price	97.98	98.09	(0.10)
DI+	0.51	0.50	0.01
DI-	30.41	27.27	3.14
ADX (15D)	31.12	29.60	1.52
A/D	-1,963.51	-1,370.77	(592.74)
CMF(20D)	7,791.362	10,671.056	(2,879.69)
CCI	0.43	0.41	0.02
Volume (IDR bn)	98.24	98.85	(0.61)
Frequency	2,565	3,247	(682)

COMMENT

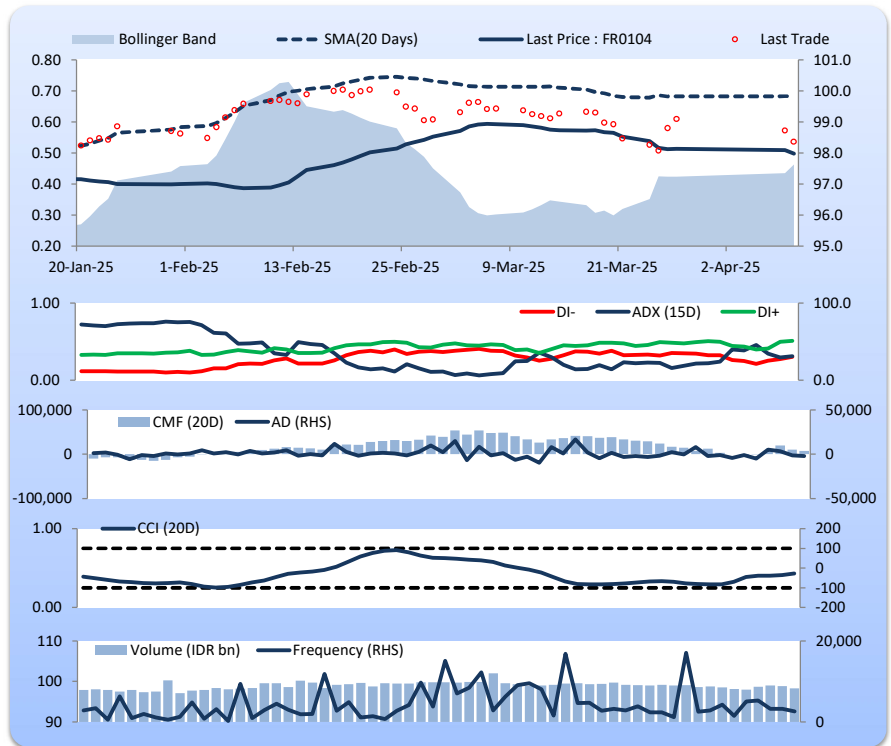
Price declined; light trade volume; downward trend continues to weaken; buying pressure eased; CCI increased.

SELL

FEATURES

Issue Date	22-Aug-24
Mature Date	15-Jul-30
Tenor	5.3
Coupon Rate	6.50
Last Yield	6.96
Modified Duration	4.32
Previous Coupon Date	15-Jan-25
Next Coupon Date	15-Jul-25

Sources: Bloomberg (Price); IDX



FR0103

INDICATORS	9-Apr-25	-1 Day	Change
Last Price	96.49	96.59	(0.10)
DI+	0.66	0.64	0.02
DI-	27.31	26.56	0.75
ADX (15D)	39.15	40.06	(0.91)
A/D	-1,820.33	236.85	(2,057.17)
CMF(20D)	-25,926.883	-20,611.546	(5,315.34)
CCI	0.86	0.85	0.00
Volume (IDR bn)	97.30	97.58	(0.28)
Frequency	4,634	7,901	(3,267)

COMMENT

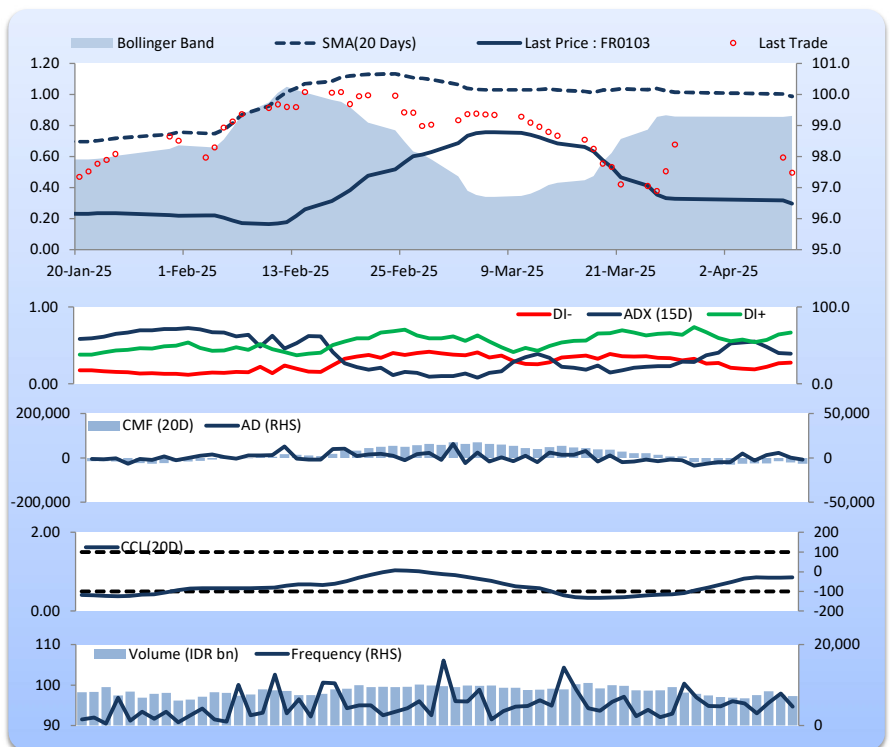
Price declined; light trade volume; downward trend continues to weaken; selling pressure increased; CCI increased.

SELL

FEATURES

Issue Date	8-Aug-24
Mature Date	15-Jul-35
Tenor	10.3
Coupon Rate	6.75
Last Yield	7.24
Modified Duration	7.14
Previous Coupon Date	15-Jan-25
Next Coupon Date	15-Jul-25

Sources: Bloomberg (Price); IDX



FR0106

INDICATORS	9-Apr-25	-1 Day	Change
Last Price	99.19	99.22	(0.02)
DI+	0.44	0.44	0.00
DI-	31.68	29.13	2.55
ADX (15D)	2.63	10.74	(8.11)
A/D	913.92	686.26	227.66
CMF(20D)	-128.262	-958.236	829.97
CCI	0.72	0.73	(0.01)
Volume (IDR bn)	101.70	98.99	2.71
Frequency	914	686	228

COMMENT

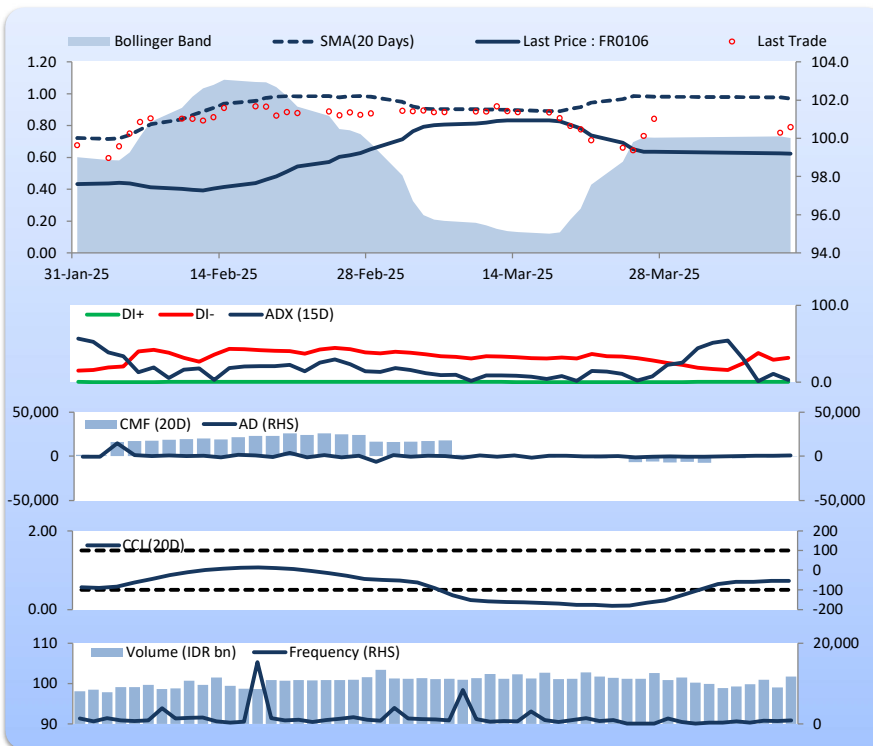
Price declined slightly; light trade volume; downward trend continues to weaken; selling pressure eased; CCI declined.

SELL

FEATURES

Issue Date	9-Jan-25
Mature Date	15-Aug-40
Tenor	15.4
Coupon Rate	7.13
Last Yield	7.21
Modified Duration	9.12
Previous Coupon Date	15-Feb-25
Next Coupon Date	15-Aug-25

Sources: Bloomberg (Price); IDX



FR0107

INDICATORS	9-Apr-25	-1 Day	Change
Last Price	98.91	98.92	(0.02)
DI+	0.39	0.40	(0.02)
DI-	28.25	26.93	1.31
ADX (15D)	4.39	7.83	(3.44)
A/D	265.12	1,046.74	(781.61)
CMF(20D)	-858.089	-1,056.178	198.09
CCI	0.80	0.82	(0.02)
Volume (IDR bn)	98.30	100.30	(2.00)
Frequency	572	1,047	(475)

COMMENT

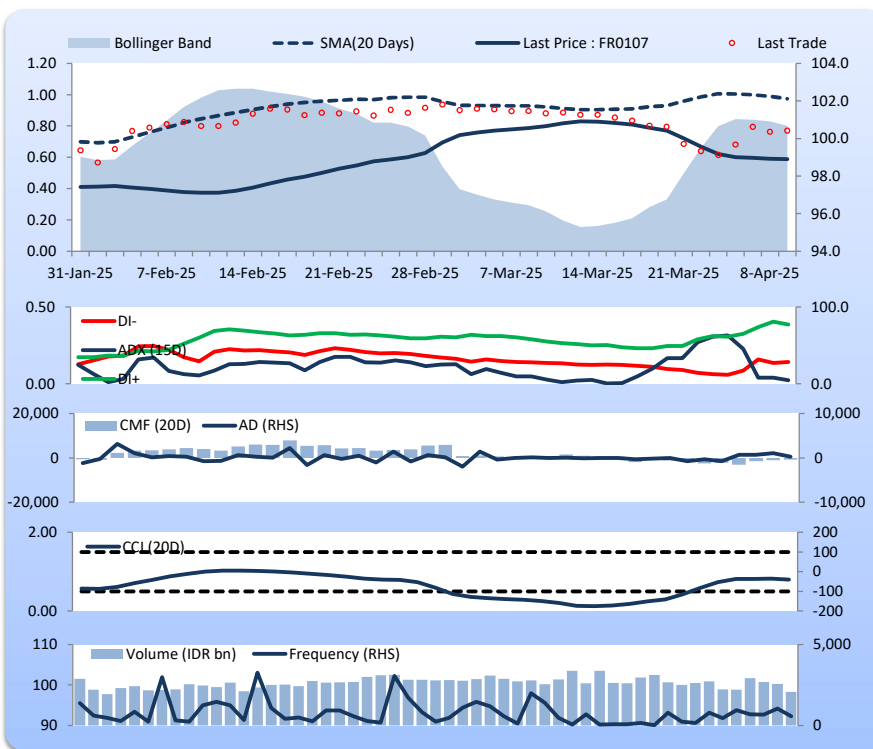
Price declined slightly; light trade volume; downward trend continues to weaken; selling pressure eased; CCI declined.

SELL

FEATURES

Issue Date	9-Jan-25
Mature Date	15-Aug-45
Tenor (year)	20.4
Coupon Rate	7.13
Last Yield	7.23
Modified Duration	10.50
Previous Coupon Date	15-Feb-25
Next Coupon Date	15-Aug-25

Sources: Bloomberg (Price); IDX



Analysts: Laras Nerpatari & Eka Nuraini

DISCLAIMER: The information contained in this report has been taken from sources which we deem reliable. However, none of P.T. BRI Danareksa Sekuritas and/or its affiliated companies and/or their respective employees and/or agents makes any representation or warranty (express or implied) or accepts any responsibility or liability as to, or in relation to, the accuracy or completeness of the information and opinions contained in this report or as to any information contained in this report or any other such information or opinions remaining unchanged after the issue thereof. We expressly disclaim any responsibility or liability (express or implied) of P.T. BRI Danareksa Sekuritas, its affiliated companies and their respective employees and agents whatsoever and howsoever arising (including, without limitation for any claims, proceedings, action, suits, losses, expenses, damages or costs) which may be brought against or suffered by any person as a result of acting in reliance upon the whole or any part of the contents of this report and neither P.T. BRI Danareksa Sekuritas, its affiliated companies or their respective employees or agents accepts liability for any errors, omissions or mis-statements, negligent or otherwise, in the report and any liability in respect of the report or any inaccuracy therein or omission therefrom which might otherwise arise is hereby expressly disclaimed. The information contained in this report is not taken as any recommendation made by P.T. BRI Danareksa Sekuritas or any other person to enter into any agreement with regard to any investment mentioned in this document. This report is prepared for general circulation. It does not have regards to the specific person who may receive this report. In considering any investments you should make your own independent assessment and seek your own professional financial and legal advice.