

MOST ACTIVE GOVERNMENT BONDS

Bond	Coupon	Maturity	Last Price	Yield	Volume (IDR bn)
FR0103	6.750	15-Jul-35	100.20	6.848	8,921.00
FR0104	6.500	15-Jul-30	99.60	6.594	4,631.98
PBS003	6.000	15-Jan-27	100.00	6.641	2,112.08
FR0087	6.500	15-Feb-31	100.35	6.670	1,521.43
FR0107	7.125	15-Aug-45	100.20	6.996	1,394.38
FR0095	6.375	15-Aug-28	100.90	6.516	1,105.10
FR0106	7.125	15-Aug-40	102.70	6.988	959.98
FR0098	7.125	15-Jun-38	100.10	6.965	875.18
PBS038	6.875	15-Dec-49	99.40	7.029	782.04
FR0084	7.250	15-Feb-26	100.78	6.432	563.60

Coupon, Last Price & Yield are in %; Volume is in IDR bn; Rating code: id(Pefindo) & idn (Fitch Indonesia)
Sources: Bloomberg; Indonesia Stock Exchange (Volume)

MOST ACTIVE CORPORATE BONDS

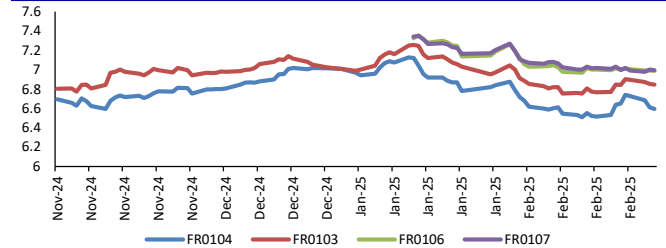
Bond	Rating	Coupon	Maturity	Last Price	Yield	Volume
INKP03BCN1	A+	9.500	5-Aug-25	100.51	9.45	621.50
OPPM03B	A+	10.500	4-Nov-25	101.20	10.38	485.80
PALM02ACN4	A	8.250	20-Feb-26	98.88	8.34	260.00
PIDL02B25	AAA	10.250	14-Jul-25	99.38	10.31	258.00
SMMF03BCN1	A+	10.250	7-Feb-26	101.35	10.11	252.14
MDKA03BCN3	A	8.250	1-Sep-25	99.25	8.31	249.00
WISL01B	A	7.750	5-Aug-25	98.98	7.83	240.00
PIDL01DCN1	A+	10.750	7-Jan-30	100.00	10.75	200.00
MDKA05ACN2	A+	7.250	2-Mar-26	98.85	7.33	183.00
LPPI02ACN1	A	10.500	4-Jul-26	104.15	7.20	122.00

SOVEREIGN BOND YIELDS

Country	Tenor	Coupon (%)	5-Mar-25	MA LTM as of Jan	MA LTM as of Dec	Spread over UST YC (bps)		
						5-Mar-25	Jan	Dec
United States	2yr		4.97	4.97	4.85			
USD	5yr		4.64	4.64	4.54			
	10yr		4.37	4.37	4.19			
German	2yr	0.25	2.15	2.12	2.08	-325	-328	-329
EUR	5yr	1.00	2.34	2.24	2.15	-230	-241	-239
	10yr	1.75	2.67	2.46	2.37	-170	-191	-182
Indonesia	2yr	4.35	4.59	4.74	5.11	-81	-66	-26
USD	5yr	3.85	4.88	5.11	5.26	24	47	72
	10yr	8.50	5.33	5.58	5.51	96	121	132
Brazil	2yr	0.00	15.09	-	15.89	969	-	1,052
BRL	3yr	0.00	15.06	14.91	15.90	966	951	1,053
	10yr	10.00	15.27	14.82	15.20	987	942	983
Philippines	2yr	6.00	5.92	5.92	5.94	52	52	57
PHP	5yr	7.88	6.09	6.09	5.94	145	145	140
	10yr	11.38	6.12	6.24	6.14	175	187	195
Thailand	2yr	3.13	1.92	2.06	2.01	-348	-334	-336
THB	5yr	3.45	1.97	2.11	2.08	-267	-254	-246
	10yr	3.63	2.20	-	-	-217	-	-
India	2yr	7.59	6.56	-	6.73	116	-	136
INR	5yr	7.28	6.63	6.64	6.74	199	200	220
	10yr	8.83	6.73	6.69	6.78	236	232	259
Malaysia	3yr	3.17	3.43	3.47	3.51	-154	-150	-134
MYR	5yr	3.26	3.59	3.62	3.65	-105	-102	-89
	10yr	4.18	3.78	3.81	3.82	-59	-56	-37

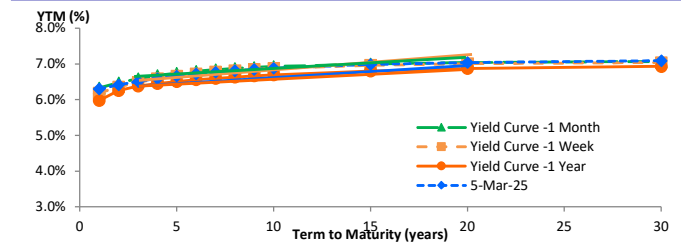
Sources: Bloomberg (Current Yield Curve), US Treasury

YIELD OF GOVERNMENT BOND BENCHMARK (%)



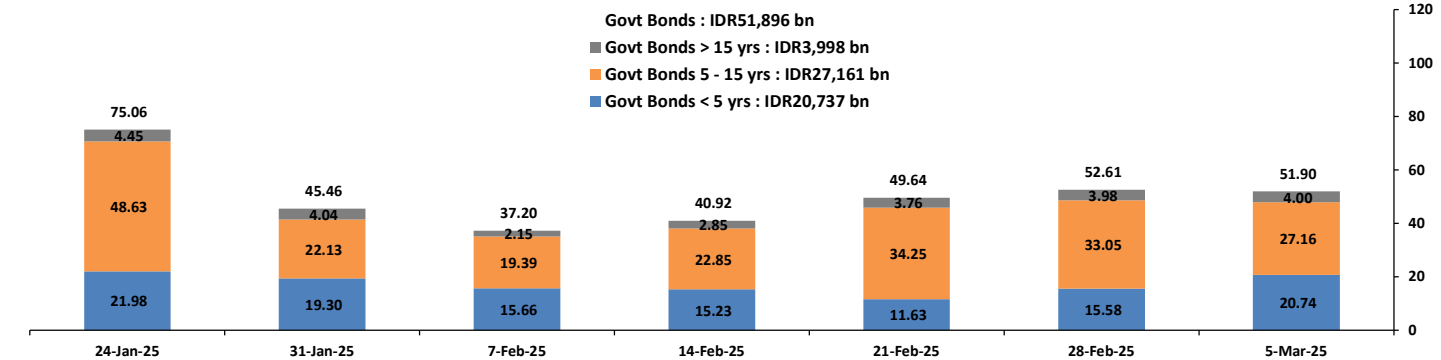
Source: DJPPR

YIELD CURVE MOVEMENT (%)



Source: Bloomberg

TRADING VOLUME BY MATURITY (IDR TRILLION)



Sources: Indonesia Stock Exchange

CURRENCY

Price	5-Mar-25	-1 Day	-1 Week	-1 Month	EoP2024	
DXY	105.00	↓	105.74	106.42	107.58	101.33
USD : IDR	16,313	↓	16,445	16,370	16,285	15,397
EUR : USD	1.07	↑	1.06	1.05	1.04	1.10
JPY : USD	149.29	↓	149.79	149.10	152.61	141.04
USD : CNY	7.256	↓	7.264	7.258	7.272	7.100
USD : SGD	4.433	↓	4.465	4.429	4.423	4.594
SGD : IDR	12.213	↓	12,237	12,248	12,069	11,677

Source : Bloomberg

COMMODITY

Price	5-Mar-25	-1 Day	-1 Week	-1 Month	EoP2024	
CPO	4,684	↑	4,600	4,728	4,613	3,662
Coal	99.00	↓	101.50	102.40	111.25	146.40
Gold	2,917	↓	2,918	2,916	2,867	2,063
Nickel	15,816	→	15,816	15,433	15,346	16,435
Copper	471.55	↑	452.75	454.00	444.40	389.05
Brent	71.75	↓	73.83	72.84	74.75	77.60
Metal	2,917.21	↓	2,917.89	2,916.39	2,867.24	2,062.98

PHEI FAIR SPREAD

	1Y	2Y	3Y	4Y	5Y	6Y	7Y	8Y	9Y	10Y
AAA	29	32	34	38	43	48	52	56	58	60
AA+	43	46	50	55	60	66	71	75	78	81
AA	66	73	79	85	92	98	103	108	111	114
AA-	105	120	130	138	146	153	158	162	165	167
A+	155	179	193	205	215	223	228	232	233	233
A	206	238	257	273	286	295	301	304	304	303
A-	250	287	310	331	347	359	366	369	370	369
BBB+	290	328	356	381	401	416	424	428	430	429
BBB	326	365	397	427	451	468	479	485	487	488

*interpolated, as of March 05, 2025 (bps)

04-Mar-2025

	04-Mar-2025	WoW	MtD	YTD
Banks	1,187.6	10.99	(19.41)	136.23
Bank Indonesia (exclude repo)	1,539.3	(0.17)	19.73	(78.68)
Non-Banks:	3,459.9	35.09	(3.77)	89.81
Mutual Fund	186.3	(0.62)	(0.05)	(0.67)
Insurance & Pension Fund	1,171.6	1.38	(0.00)	26.35
Foreign Investor	886.1	(4.98)	(4.08)	9.43
Individual	576.7	38.08	0.13	34.23
Others	639.2	1.23	0.23	20.47
Total	6,186.9	45.91	(3.45)	147.36
Domestic Investor	3,761.5	51.07	(19.10)	216.61
Foreign Investor	886.1	(4.98)	(4.08)	9.43
Bank Indonesia (include repo)	1,528.3	9.07	0.50	41.45

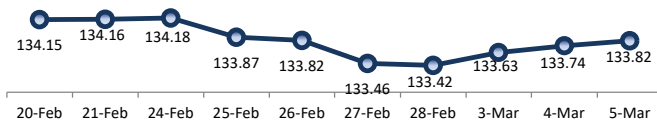
Source : DJPPR (Processed)

Sources : PHEI, Bloomberg

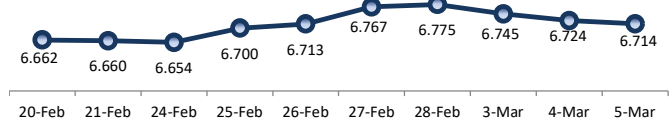
VALUATIONS OF GOVERNMENT BONDS

Bond	Issue Date	Mature Date	Coupon	TTM	Modified Duration	YTM (Change)	Prev Closing Price	Fair Yield Range	Fair Price Range	Last Trade				
										Date	Price	Vol (IDR bn)	Freq	
FR0037	18-May-10	15-Sep-26	12.00	1.5	1.33	6.42	↑ 0.2bps	107.97	6.358 6.567	107.77 108.09	4-Mar-25	107.98	30.00	2
FR0056	23-Sep-06	15-Sep-26	8.38	1.5	1.37	6.32	↓ -0.2bps	102.94	6.290 6.418	102.80 102.99	5-Mar-25	104.50	297.68	17
FR0090	8-Jul-21	15-Apr-27	5.13	2.1	1.93	6.47	↓ -0.8bps	97.38	6.409 6.490	97.34 97.49	5-Mar-25	98.80	226.55	35
FR0059	15-Sep-11	15-May-27	7.00	2.2	1.97	6.43	↓ -0.3bps	101.14	6.391 6.490	101.01 101.22	5-Mar-25	101.60	277.96	27
FR0042	25-Jan-07	15-Jul-27	10.25	2.4	2.08	6.49	↓ -0.5bps	108.10	6.417 6.556	107.95 108.27	3-Mar-25	106.91	0.01	1
FR0094	4-Mar-22	15-Jan-28	5.60	2.9	2.58	6.74	↑ 0.1bps	97.06	6.622 6.882	96.71 97.36	27-Dec-24	95.25	0.50	1
FR0047	30-Aug-07	15-Feb-28	10.00	2.9	2.55	6.64	↓ -0.2bps	108.84	6.547 6.692	108.72 109.12	3-Mar-25	108.90	2.02	5
FR0064	13-Aug-12	15-May-28	6.13	3.2	2.81	6.51	↓ -2.3bps	98.90	6.439 6.577	98.70 99.10	5-Mar-25	99.85	478.85	43
FR0095	19-Aug-22	15-Aug-28	6.38	3.4	3.04	6.52	↓ -1.3bps	99.57	6.456 6.543	99.48 99.75	5-Mar-25	100.90	1,105.10	41
FR0099	27-Jan-23	15-Jan-29	6.40	3.9	3.35	6.47	↓ -0.2bps	99.76	6.629 6.589	99.35 100.23	25-Sep-23	99.77	139.50	19
FR0071	12-Sep-13	15-Mar-29	9.00	4.0	3.25	6.57	↓ -2.0bps	108.46	6.519 6.608	108.33 108.66	5-Mar-25	108.55	61.07	12
FR0101	2-Nov-23	15-Apr-29	6.88	4.1	3.45	6.55	↓ -1.6bps	101.15	6.512 6.599	100.97 101.28	5-Mar-25	101.18	268.15	35
FR0078	27-Sep-18	15-May-29	8.25	4.2	3.46	6.57	↓ -4.1bps	106.07	6.524 6.627	105.85 106.23	5-Mar-25	107.67	311.95	14
FR0104	22-Aug-24	15-Jul-30	6.50	5.4	4.43	6.59	↓ -1.6bps	99.57	6.509 6.675	99.21 99.95	5-Mar-25	99.60	4,631.98	104
FR0052	20-Aug-09	15-Aug-30	10.50	5.4	4.22	6.76	↑ 2.2bps	116.78	6.595 6.816	116.53 117.63	5-Mar-25	118.18	0.02	5
FR0082	1-Aug-19	15-Sep-30	7.00	5.5	4.39	6.62	↓ -1.4bps	101.75	6.595 6.673	101.49 101.85	5-Mar-25	101.80	188.59	24
FRSDG001	27-Oct-22	15-Oct-30	7.38	5.6	4.44	6.71	→ 0.0bps	103.05	6.601 6.822	102.53 103.57	4-Mar-25	102.60	100.00	1
FR0087	13-Aug-20	15-Feb-31	6.50	5.9	4.85	6.67	↓ -0.9bps	99.17	6.635 6.721	98.93 99.34	5-Mar-25	100.35	1,521.43	70
FR0085	4-May-20	15-Apr-31	7.75	6.1	4.72	6.67	↓ -0.7bps	105.33	6.653 6.913	104.10 105.43	26-Feb-25	104.90	20.49	3
FR0073	6-Aug-15	15-May-31	8.75	6.2	4.71	6.72	↓ -0.9bps	110.11	6.694 6.778	109.83 110.27	5-Mar-25	109.15	6.79	6
FR0054	22-Jul-10	15-Jul-31	9.50	6.4	4.80	6.81	↓ -0.7bps	113.67	6.724 6.925	113.06 114.17	5-Mar-25	113.88	17.20	3
FR0091	8-Jul-21	15-Apr-32	6.38	7.1	5.49	6.73	↓ -1.0bps	98.00	6.712 6.776	97.75 98.11	5-Mar-25	96.55	244.56	105
FR0058	21-Jul-11	15-Jun-32	8.25	7.3	5.42	6.75	↓ -0.8bps	108.48	6.734 6.813	108.12 108.60	5-Mar-25	108.17	220.00	12
FR0074	10-Nov-16	15-Aug-32	7.50	7.4	5.67	6.80	↓ -1.4bps	104.06	6.760 6.847	103.76 104.27	5-Mar-25	105.00	3.50	2
FR0096	19-Aug-22	15-Feb-33	7.00	7.9	6.02	6.80	↓ -2.6bps	101.24	6.770 6.827	101.04 101.39	5-Mar-25	99.80	324.48	20
FR0065	30-Aug-12	15-May-33	6.63	8.2	6.11	6.80	↓ -1.0bps	98.90	6.777 6.880	98.41 99.04	5-Mar-25	97.00	104.48	51
FR0100	24-Aug-23	15-Feb-34	6.63	8.9	6.63	6.78	↓ -1.6bps	99.00	6.744 6.819	98.71 99.20	5-Mar-25	98.40	361.41	61
FR0068	1-Aug-13	15-Mar-34	8.38	9.0	6.20	6.86	↓ -3.2bps	110.04	6.804 6.887	109.88 110.46	5-Mar-25	110.20	128.60	12
FR0080	4-Jul-19	15-Jun-35	7.50	10.3	7.06	6.89	↓ -1.6bps	104.43	6.811 6.915	104.24 105.02	5-Mar-25	105.80	69.03	24
FR0103	8-Aug-24	15-Jul-35	6.75	10.4	7.29	6.85	↓ -0.4bps	99.27	6.765 6.872	99.09 99.88	5-Mar-25	100.20	8,921.00	361
FR0072	9-Jul-15	15-May-36	8.25	11.2	7.29	6.91	↑ 0.9bps	110.33	6.877 6.933	110.12 110.58	5-Mar-25	110.08	460.65	14
FR0088	7-Jan-21	15-Jun-36	6.25	11.3	7.78	6.91	↓ -0.3bps	94.89	6.862 6.920	94.80 95.23	5-Mar-25	95.80	29.26	60
FR0045	24-May-07	15-May-37	9.75	12.2	7.44	6.94	↑ 3.1bps	122.81	6.820 7.063	121.71 123.98	5-Mar-25	123.64	0.02	4
FR0093	6-Jan-22	15-Jul-37	6.38	12.4	8.28	6.93	↓ -0.2bps	95.43	6.890 6.975	95.07 95.75	5-Mar-25	96.60	8.14	30
FR0075	10-Aug-17	15-May-38	7.50	13.2	8.23	7.01	↓ -1.2bps	104.15	6.950 7.033	103.96 104.68	5-Mar-25	103.05	113.58	18
FR0098	15-Sep-22	15-Jun-38	7.13	13.3	8.41	6.97	↓ -1.3bps	101.36	6.838 7.013	100.94 102.46	5-Mar-25	100.10	875.18	65
FR0050	24-Jan-08	15-Jul-38	10.50	13.4	7.85	6.99	↓ -1.5bps	130.14	6.963 7.071	129.32 130.43	26-Feb-25	131.15	0.01	2
FR0079	7-Jan-19	15-Apr-39	8.38	14.1	8.32	7.02	↓ -0.2bps	111.99	7.009 7.066	111.56 112.10	5-Mar-25	111.90	12.62	6
FR0083	7-Nov-19	15-Apr-40	7.50	15.1	8.85	7.04	↓ -1.1bps	104.21	7.001 7.058	104.06 104.60	5-Mar-25	104.80	218.70	41
FR0057	21-Apr-11	15-May-41	9.50	16.2	8.81	7.05	→ 0.0bps	123.44	7.020 7.114	122.71 123.75	26-Feb-25	122.53	7.80	1
FR0106	9-Jan-25	15-Aug-40	7.13	15.4	9.29	6.99	↓ -0.6bps	101.28	6.968 7.038	100.80 101.47	5-Mar-25	102.70	959.98	102
FR0062	9-Feb-12	15-Apr-42	6.38	17.1	9.81	7.02	↓ -0.7bps	93.61	7.001 7.067	93.18 93.80	5-Mar-25	97.00	1.36	6
FR0092	8-Jul-21	15-Jun-42	7.13	17.3	9.74	7.03	↓ -1.0bps	100.95	6.989 7.056	100.67 101.33	5-Mar-25	97.80	199.73	85
FR0097	19-Aug-22	15-Jun-43	7.13	18.3	10.03	7.00	↓ -0.7bps	101.25	6.925 7.041	100.84 102.04	5-Mar-25	99.80	195.32	62
FR0067	18-Jul-13	15-Feb-44	8.75	18.9	9.90	7.05	↓ -1.2bps	117.62	7.037 7.108	116.94 117.78	27-Feb-25	118.15	20.10	6
FR0076	22-Sep-17	15-May-48	7.13	23.2	11.00	7.06	↓ -0.6bps	103.59	7.012 7.173	102.25 104.12	5-Mar-25	103.23	67.70	42
FR0107	9-Jan-25	15-Aug-45	7.38	20.4	10.71	7.00	↓ -0.7bps	101.39	6.978 7.101	100.58 101.59	5-Mar-25	100.20	1,394.38	80
FR0089	7-Jan-21	15-Aug-51	6.88	26.4	11.96	7.02	↓ -0.5bps	98.31	6.986 7.056	97.84 98.66	5-Mar-25	100.00	58.24	97
FR0102	5-Jan-24	15-Jul-54	6.88	29.4	12.32	6.99	↓ -0.4bps	98.52	6.942 7.048	97.86 99.15	5-Mar-25	97.00	91.16	107
FR0105	27-Aug-24	15-Jul-64	6.88	39.4	13.14	7.07	↓ -0.4bps	97.36	6.962 7.222	75.26 77.44	5-Mar-25	99.00	226.27	59
ORI024T6	8-Nov-23	15-Oct-29	6.35	4.6	-	6.67	→ 0.0bps	98.75	6.667 6.928	97.72 98.74	5-Mar-25	101.00	1.14	6
ORI025T6	28-Feb-24	15-Feb-30	6.40	4.9	-	6.82	→ 0.0bps	98.24	6.748 7.009	97.46 98.54	5-Mar-25	98.00	0.69	4
ORI026T6	30-Oct-24	15-Oct-30	6.40	5.6	-	6.53	↓ -2.0bps	99.39	6.491 6.751	98.36 99.57	5-Mar-25	100.50	3.31	8
PBS017	11-Jan-18	15-Oct-25	6.13	0.6	0.58	6.02	↓ -0.1bps	100.06	5.891 6.152	99.98 100.13	5-Mar-25	101.60	273.35	15
PBS032	29-Jul-21	15-Jul-26	4.88	1.4	1.29	6.47	→ 0.0bps	97.94	6.328 6.559	97.83 98.12	5-Mar-25	99.25	199.25	165
PBS021	5-Dec-18	15-Nov-26	6.63	1.7	1.55	6.24	↑ 5.4bps	103.56	6.182 6.442	100.28 100.69	4-Mar-25	103.25	46.80	2
PBS003	2-Feb-12	15-Jan-27	6.00	1.9	1.72	6.64	↑ 0.1bps	98.89	6.330 6.591	98.97 99.42	5-Mar-25	100.00	2,112.08	265
PBS020	22-Oct-18	15-Oct-27	9.00	2.6	2.25	6.33	↑ 3.8bps	106.32	6.266 6.526	105.84 106.48	31-Jul-24	108.25	0.50	1
PBS018	4-Jun-18	15-May-28	7.63	3.2	2.75	6.40	↑ 2.9bps	103.47	6.329 6.590	102.93 103.68	3-Sep-19	99.29	2,000.00	2
PBS030	4-Jun-21	15-Jul-28	5.88	3.4	2.98	6.45	↑ 2.7bps	98.29	6.390 6.650	97.69 98.45	5-Mar-25	97.99	115.41	12
PBSG001	22-Sep-22	15-Sep-29	6.63	4.5	3.74	6.61	↑ 0.1bps	100.07	6.477 6.711	99.66 100.57	25-Feb-25	100.33	547.19	28
IFR0006	1-Apr-10	15-Mar-30	10.25	5.0	3.84	6.54	↑ 0.8bps	115.68	6.485 6.700	114.94 115.93	10-Dec-24	116.00	40.00	4
PBS023	15-May-19	15-May-30	8.13	5.2	4.14	6.56	↑ 0.6bps	106.78	6.507 6.718	106.07 107.02	21-Feb-25	107.10	10.00	2
PBS012	28-Jan-16	15-Nov-31	8.88	6.7	4.99	6.66	↓ -1.1bps	111.81	6.779 7.040	109.65 111.11	24-Feb-25	111.50	28.00	5
PBS024	28-May-19	15-May-32	8.38	7.2	5.33	6.67	↓ -0.5bps	109.58	6.630 6.806	108.79 109.84	20-Dec-22	94.07	15.00	22
PBS025	29-May-19	15-May-33	8.38	8.2	5.87	6.76	↓ -1.0bps	109.99	6.722 6.887	109.18 110.27	25-Feb-25	110.17	40.00	4
PBS029	14-Jan-21	15-Mar-34	6.38	9.0	6.54	6.79	→ 0.0bps	97.21	6.682 6.837	96.92 97.94	5-Mar-25	95.95	5.11	3
PBS022	24-Jan-19	15-Apr-34	8.63	9.1	6.27	6.70	→ 0.0bps	112.95	6.707 6.967	111.03 112.91	27-Feb-25	112.20	0.20	1
IFR0010	3-Mar-11	15-Feb-36	10.00	10.9	7.06	6.86	↓ -2.0bps	123.92	6.789 6.959	123.03 124.52	20-Dec-24	122.23	1.00	1
PBS037	12-Jan-23	15-Mar-36	6.88	11.0	7.40	6.90	↓ -4.5bps	99.82	6.821 6.986	99.15 100.41	5-Mar-25	100.85	0.21	14
PBS004	16-Feb-12	15-Feb-37	6.10	11.9	8.23</									

PRICE INDEX



YIELD INDEX



TECHNICAL ANALYSIS

FR0104

INDICATORS	5-Mar-25	-1 Day	Change
Last Price	98.92	98.85	0.07
DI+	0.44	0.45	(0.01)
DI-	37.38	32.11	5.27
ADX (15D)	14.02	20.02	(6.00)
A/D	2,607.92	16,776.87	(14,168.95)
CMF(20D)	41,108.134	41,262.275	(154.14)
CCI	0.30	0.33	(0.03)
Volume (IDR bn)	99.60	99.45	0.15
Frequency	4,632	16,777	(12,145)

COMMENT

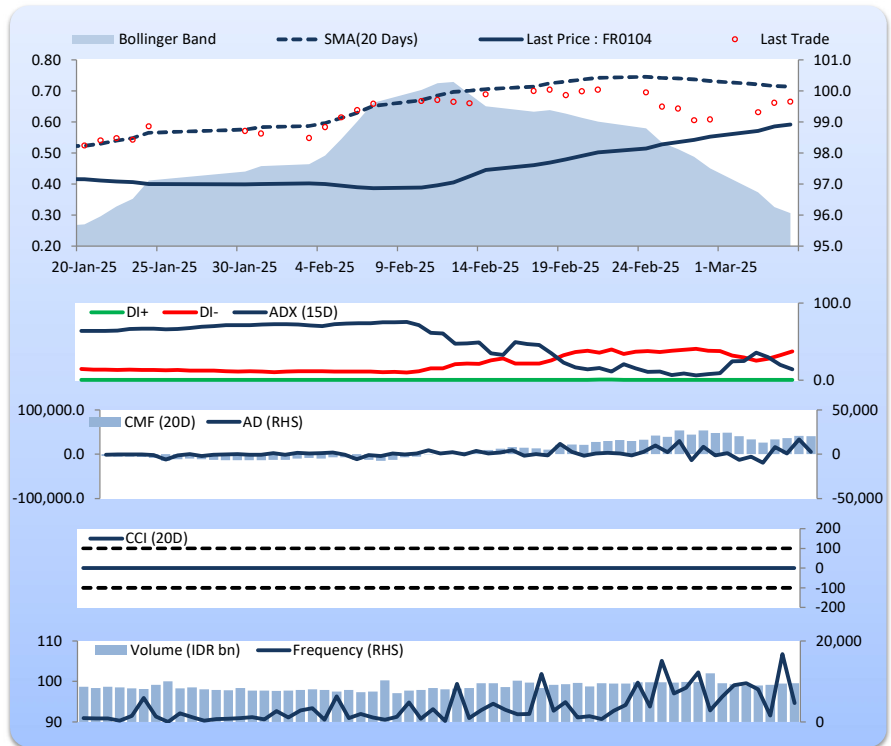
Price increased; light trade volume; downward trend continues to weaken; buying pressure eased; CCI declined.

BUY

FEATURES

Issue Date	22-Aug-24
Mature Date	15-Jul-30
Tenor	5.4
Coupon Rate	6.50
Last Yield	6.74
Modified Duration	4.42
Previous Coupon Date	15-Jan-25
Next Coupon Date	15-Jul-25

Sources: Bloomberg (Price); IDX



FR0103

INDICATORS	5-Mar-25	-1 Day	Change
Last Price	98.75	98.67	0.08
DI+	0.56	0.53	0.02
DI-	34.87	34.10	0.77
ADX (15D)	21.01	21.94	(0.93)
A/D	8,416.04	3,333.07	5,082.96
CMF(20D)	44,955.403	46,892.122	(1,936.72)
CCI	0.35	0.40	(0.05)
Volume (IDR bn)	100.20	98.96	1.24
Frequency	8,921	14,285	(5,364)

COMMENT

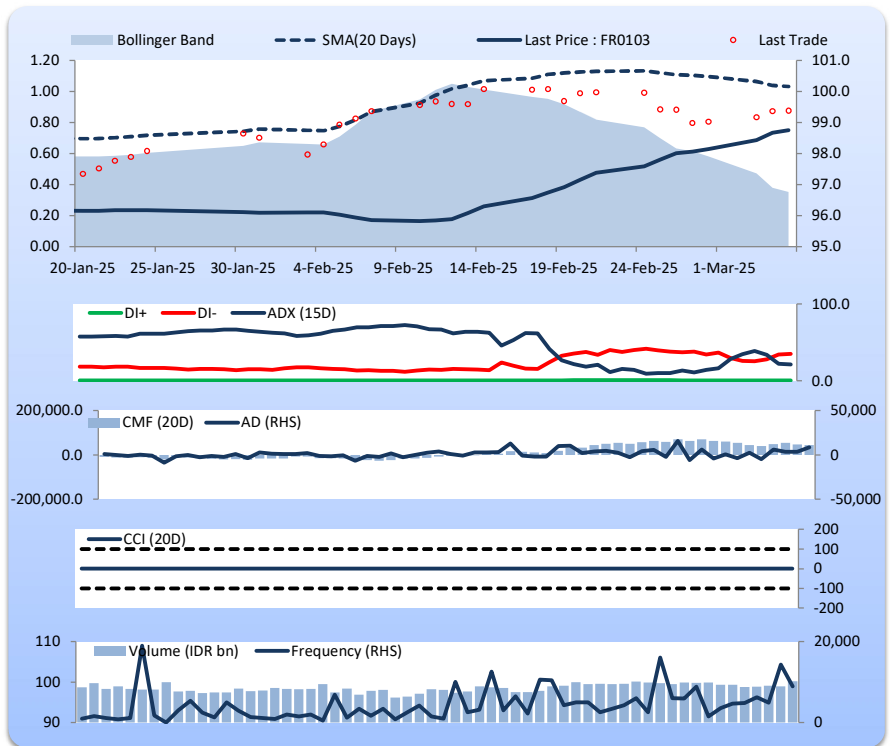
Price increased; light trade volume; downward trend continues to weaken; buying pressure eased; CCI declined.

BUY

FEATURES

Issue Date	8-Aug-24
Mature Date	15-Jul-35
Tenor	10.4
Coupon Rate	6.75
Last Yield	6.92
Modified Duration	7.28
Previous Coupon Date	15-Jan-25
Next Coupon Date	15-Jul-25

Sources: Bloomberg (Price); IDX



FR0106

INDICATORS	5-Mar-25	-1 Day	Change
Last Price	100.61	100.37	0.24
DI+	0.27	0.28	(0.01)
DI-	32.44	33.15	(0.71)
ADX (15D)	8.17	8.76	(0.59)
A/D	870.68	-1,681.58	2,552.26
CMF(20D)	1,140.601	1,675.254	(534.65)
CCI	0.24	0.36	(0.12)
Volume (IDR bn)	102.70	101.26	1.44
Frequency	960	3,111	(2,151)

COMMENT

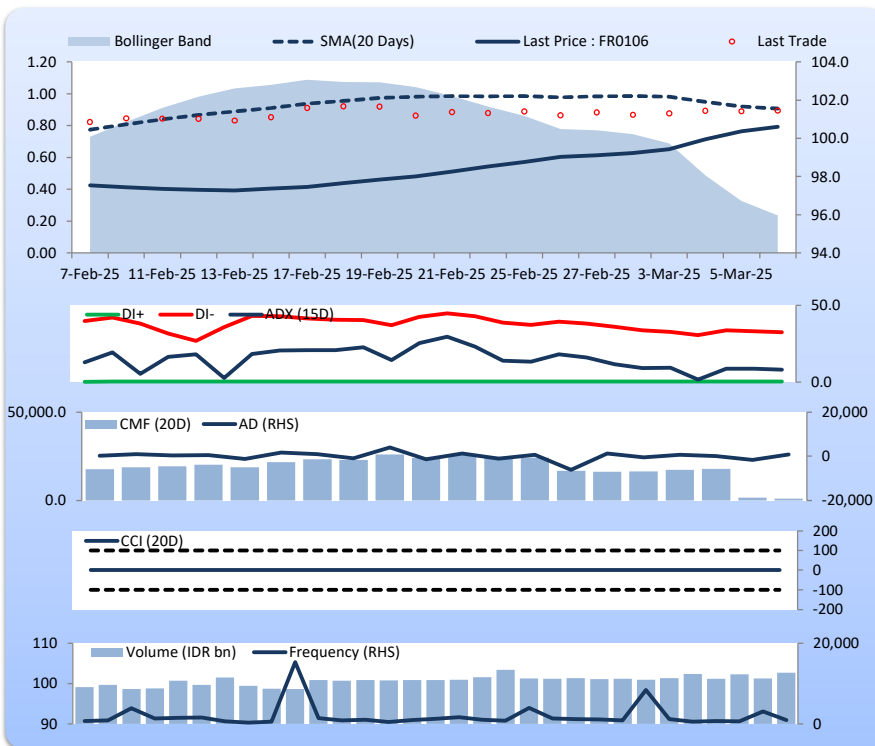
Price increased; light trade volume; upward trend continues to weaken; buying pressure eased; CCI declined.

BUY

FEATURES

Issue Date	9-Jan-25
Mature Date	15-Aug-40
Tenor	15.4
Coupon Rate	7.13
Last Yield	7.06
Modified Duration	9.27
Previous Coupon Date	15-Feb-25
Next Coupon Date	15-Aug-25

Sources: Bloomberg (Price); IDX



FR0107

INDICATORS	5-Mar-25	-1 Day	Change
Last Price	100.31	100.18	0.13
DI+	0.30	0.31	(0.01)
DI-	28.33	29.50	(1.17)
ADX (15D)	9.55	14.21	(4.66)
A/D	1,394.38	-1,958.33	3,352.72
CMF(20D)	1,109.925	796.300	313.63
CCI	0.36	0.43	(0.07)
Volume (IDR bn)	100.20	101.20	(1.00)
Frequency	1,394	1,998	(603)

COMMENT

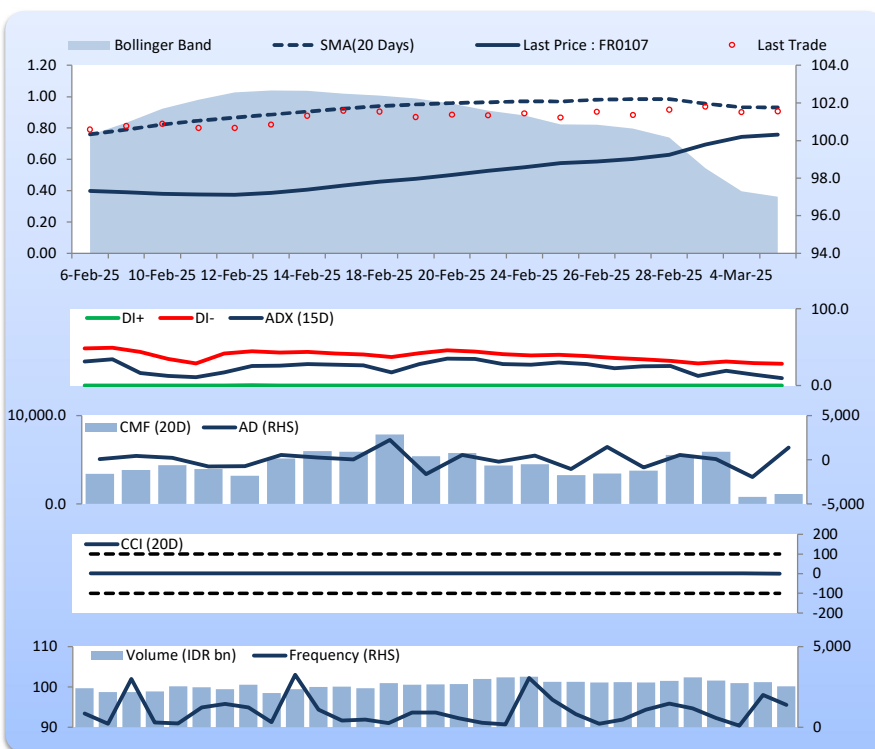
Price increased; light trade volume; upward trend continues to weaken; buying pressure increased; CCI declined.

BUY

FEATURES

Issue Date	9-Jan-25
Mature Date	15-Aug-45
Tenor (year)	20.4
Coupon Rate	7.13
Last Yield	7.10
Modified Duration	10.66
Previous Coupon Date	15-Feb-25
Next Coupon Date	15-Aug-25

Sources: Bloomberg (Price); IDX



Analysts: Laras Nerpatari & Eka Nuraini

DISCLAIMER: The information contained in this report has been taken from sources which we deem reliable. However, none of P.T. BRI Danareksa Sekuritas and/or its affiliated companies and/or their respective employees and/or agents makes any representation or warranty (express or implied) or accepts any responsibility or liability as to, or in relation to, the accuracy or completeness of the information and opinions contained in this report or as to any information contained in this report or any other such information or opinions remaining unchanged after the issue thereof. We expressly disclaim any responsibility or liability (express or implied) of P.T. BRI Danareksa Sekuritas, its affiliated companies and their respective employees and agents whatsoever and howsoever arising (including, without limitation for any claims, proceedings, action, suits, losses, expenses, damages or costs) which may be brought against or suffered by any person as a result of acting in reliance upon the whole or any part of the contents of this report and neither P.T. BRI Danareksa Sekuritas, its affiliated companies or their respective employees or agents accepts liability for any errors, omissions or mis-statements, negligent or otherwise, in the report and any liability in respect of the report or any inaccuracy therein or omission thereof which might otherwise arise is hereby expressly disclaimed. The information contained in this report is not taken as any recommendation made by P.T. BRI Danareksa Sekuritas or any other person to enter into any agreement with regard to any investment mentioned in this document. This report is prepared for general circulation. It does not have regards to the specific person who may receive this report. In considering any investments you should make your own independent assessment and seek your own professional financial and legal advice.