

MOST ACTIVE GOVERNMENT BONDS

Bond	Coupon	Maturity	Last Price	Yield	Volume (IDR bn)
FR0100	6.625	15-Feb-34	96.20	7.136	1,451.01
PBS003	6.000	15-Jan-27	99.20	6.955	1,010.34
FR0103	6.750	15-Jul-35	98.00	7.134	878.92
FR0106	7.125	15-Aug-40	99.65	7.298	872.87
FR0097	7.125	15-Jun-43	100.75	7.287	420.37
FR0096	7.000	15-Feb-33	99.35	7.133	386.76
FR0087	6.500	15-Feb-31	96.50	7.024	377.59
PBS032	4.875	15-Jul-26	97.67	7.046	326.47
PBS030	5.875	15-Jul-28	97.05	6.956	320.54
FR0064	6.125	15-May-28	99.85	6.824	254.48

Coupon, Last Price & Yield are in %; Volume is in IDR bn; Rating code: id (Pefindo) & idn (Fitch Indonesia)
Sources: Bloomberg; Indonesia Stock Exchange (Volume)

MOST ACTIVE CORPORATE BONDS

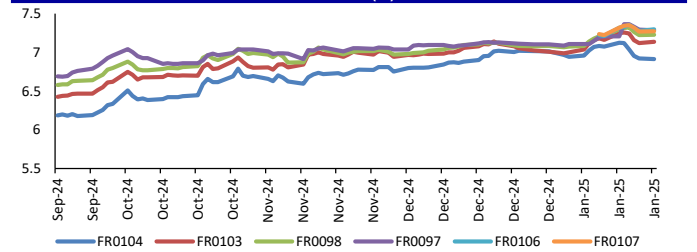
Bond	Rating	Coupon	Maturity	Last Price	Yield	Volume
PIDL01ACN1	idA+	7.250	17-Jan-26	100.01	7.25	193.00
INKP05ACN2	idA+	7.250	15-Dec-25	100.04	7.25	100.00
LPP101BCN2	idA	9.500	22-Apr-25	100.70	9.43	90.00
PJAA03ACN1	idA+	8.500	9-Jul-27	103.61	6.90	78.00
SMMA03CN1	BBB+(idn)	10.000	5-Apr-29	100.02	9.99	77.56
BCAP05ACN1	idBBB+	9.250	20-Jan-26	100.00	9.25	72.00
ASDF06BCN4	AAA(idn)	6.700	2-Oct-27	99.50	6.90	60.00
SMMFIN01BCN3	idA	8.500	22-Jun-26	100.90	7.82	55.86
SGER01ACN1	idA-	10.000	20-Jul-25	100.05	10.00	50.00
PIKI01B	idAA	9.150	4-Jul-25	100.94	9.07	42.00

SOVEREIGN BOND YIELDS

Country	Tenor	Coupon (%)	MA LTM as		Spread over UST YC (bps)		
			20-Jan-25 of Dec	MA LTM as of Nov	20-Jan-25	Dec	Nov
United States	2yr		4.97	4.97			
USD	5yr		4.64	4.64			
	10yr		4.37	4.37			
German	2yr	0.25	2.23	2.08	1.95	-317	-332
EUR	5yr	1.00	2.34	2.15	1.93	-230	-249
	10yr	1.75	2.53	2.37	2.09	-184	-200
Indonesia	2yr	4.13	-	8.99	6.10	-	359
USD	5yr	3.50	-	5.23	4.91	-	59
	10yr	3.85	-	5.26	4.97	-	89
Brazil	2yr	0.00	15.31	15.89	14.13	991	1,049
BRL	3yr	0.00	15.28	15.90	14.00	988	1,050
	10yr	10.00	15.21	15.20	13.44	981	980
Philippines	2yr	6.00	6.03	5.94	5.93	63	54
PHP	5yr	7.88	5.94	5.94	5.93	130	130
	10yr	11.38	6.33	6.14	6.00	196	177
Thailand	2yr	3.13	2.08	2.01	2.01	-332	-339
THB	5yr	3.45	2.15	2.08	2.09	-249	-256
	10yr	3.63	2.41	2.25	2.30	-196	-212
India	2yr	7.59	6.70	6.73	6.66	130	133
INR	5yr	7.28	6.72	6.74	6.69	208	210
	10yr	8.83	6.76	6.78	6.74	239	241
Malaysia	3yr	3.17	3.46	3.51	3.48	-151	-146
MYR	5yr	3.26	3.63	3.65	3.60	-101	-99
	10yr	4.18	3.83	3.82	3.82	-54	-55

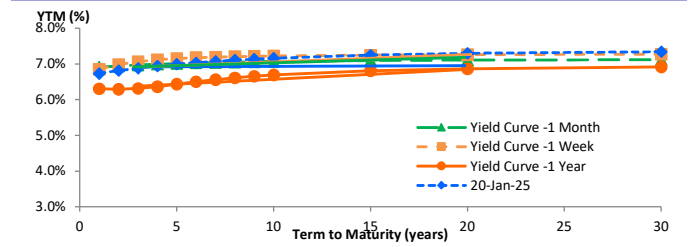
Sources: Bloomberg (Current Yield Curve), US Treasury

YIELD OF GOVERNMENT BOND BENCHMARK (%)



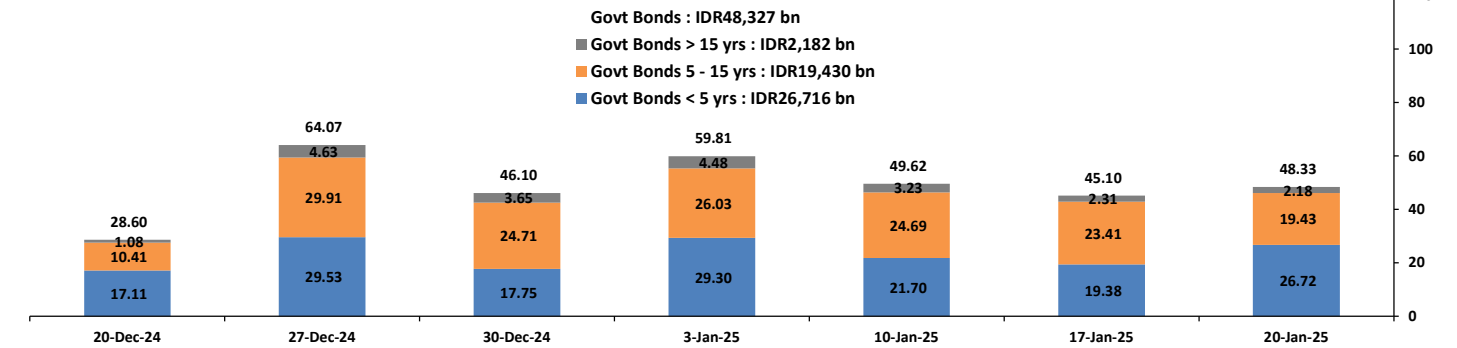
Source: DJPPR

YIELD CURVE MOVEMENT (%)



Source: Bloomberg

TRADING VOLUME BY MATURITY (IDR TRILLION)



Sources: Indonesia Stock Exchange

CURRENCY

Price	20-Jan-25	-1 Day	-1 Week	-1 Month	EoP2024
DXY	109.08	↓	109.35	109.96	107.62
USD : IDR	16,360	↓	16,365	16,275	16,195
EUR : USD	1.03	↑	1.03	1.02	1.04
JPY : USD	156.26	↓	156.30	157.48	156.31
USD : CNY	7.316	↓	7.325	7.332	7.295
USD : SGD	4.494	↓	4.507	4.511	4.506
SGD : IDR	11,997	↑	11,981	11,857	11,933

Source: Bloomberg

COMMODITY

Price	20-Jan-25	-1 Day	-1 Week	-1 Month	EoP2024
CPO	4,454	↑	4,441	4,815	4,762
Coal	117.25	→	117.25	114.50	127.40
Gold	2,704	↓	2,703	2,663	2,623
Nickel	15,775	↓	15,959	15,676	15,199
Copper	434.75	↓	436.85	432.55	404.10
Brent	82.20	↑	82.11	82.92	73.40
Metal	2,704.14	↑	2,703.25	2,663.16	2,622.91

PHEI FAIR SPREAD

	1Y	2Y	3Y	4Y	5Y	6Y	7Y	8Y	9Y	10Y
AAA	17	23	29	36	42	49	55	60	64	67
AA+	32	37	45	54	64	71	78	83	86	88
AA	55	62	72	84	95	105	112	117	120	122
AA-	90	105	118	132	145	156	164	170	174	176
A+	135	161	177	192	207	219	229	236	241	244
A	184	219	238	256	272	286	297	305	310	313
A-	233	272	295	316	335	350	361	369	373	376
BBB+	280	320	348	373	394	410	421	428	431	433
BBB	327	366	399	428	452	469	479	484	486	487

*interpolated, as of January 20, 2025 (bps)

DEBT INVESTMENT

	17-Jan-2025	WoW	MtD	YTD
Banks	1,109.5	(40.01)	58.11	58.11
Bank Indonesia (exclude repo)	1,572.1	46.73	(45.94)	(45.94)
Non-Banks:	3,391.5	0.63	21.39	21.39
Mutual Fund	187.8	0.57	0.84	0.84
Insurance & Pension Fund	1,156.6	3.36	11.35	11.35
Foreign Investor	871.0	(8.44)	(5.65)	(5.65)
Individual	548.3	3.50	5.78	5.78
Others	618.8	0.00	0.13	0.13
Total	6,073.1	7.35	33.55	33.55
Domestic Investor	3,630.0	(30.93)	85.15	85.15
Foreign Investor	871.0	(8.44)	(5.65)	(5.65)
Bank Indonesia (include repo)	1,493.0	3.23	6.20	6.20

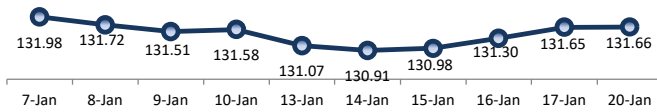
Source: DJPPR (Processed)

Sources: PHEI, Bloomberg

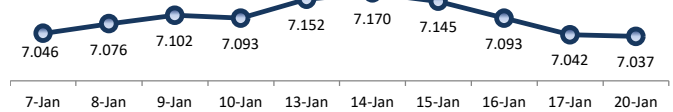
VALUATIONS OF GOVERNMENT BONDS

Bond	Issue Date	Mature Date	Coupon	TTM	Modified Duration	YTM (Change)	Prev Closing Price	Fair Yield Range	Fair Price Range	Last Trade				
										Date	Price	Vol (IDR bn)	Freq	
FR0037	18-May-06	15-Sep-26	12.00	1.7	1.44	6.86	↑ 1.8bps	107.85	6.754 6.885	107.83 108.04	13-Jan-25	107.86	13.00	4
FR0056	23-Sep-10	15-Sep-26	8.38	1.7	1.48	6.83	↓ -1.1bps	102.35	6.748 6.865	102.30 102.48	20-Jan-25	102.80	13.87	27
FR0090	8-Jul-11	15-Apr-27	5.13	2.2	2.04	6.86	↑ 0.4bps	96.46	6.798 6.913	96.35 96.57	20-Jan-25	96.40	99.60	50
FR0059	15-Sep-11	15-May-27	7.00	2.3	2.08	6.86	↑ 0.2bps	100.28	6.793 6.886	100.23 100.42	20-Jan-25	100.31	42.77	40
FR0042	25-Jan-07	15-Jul-27	10.25	2.5	2.19	6.88	↓ -8.8bps	107.58	6.783 6.931	107.46 107.81	20-Jan-25	108.31	0.00	2
FR0094	4-Mar-22	15-Jan-28	5.60	3.0	2.69	6.88	↑ 0.1bps	96.60	6.657 6.868	96.63 97.18	27-Dec-24	95.25	0.50	1
FR0047	30-Aug-07	15-Feb-28	10.00	3.1	2.55	6.75	↑ 0.9bps	108.86	6.584 6.889	108.47 109.35	20-Jan-25	110.56	0.03	4
FR0064	13-Aug-12	15-May-28	6.13	3.3	2.92	6.82	↓ -1.4bps	97.95	6.835 6.941	97.61 97.91	20-Jan-25	99.85	254.48	30
FR0095	19-Aug-22	15-Aug-28	6.38	3.6	3.06	6.84	↓ -0.7bps	98.54	6.847 6.930	98.26 98.52	20-Jan-25	98.45	194.29	50
FR0099	27-Jan-23	15-Jan-29	6.40	4.0	3.46	6.53	↓ -0.3bps	99.55	6.374 6.543	99.51 100.09	25-Sep-23	99.77	139.50	19
FR0071	12-Sep-13	15-Mar-29	9.00	4.2	3.36	6.92	↑ 0.7bps	107.37	6.909 6.997	107.09 107.42	20-Jan-25	105.75	86.20	10
FR0101	2-Nov-23	15-Apr-29	6.88	4.2	3.56	6.87	↑ 2.1bps	99.99	6.876 7.000	99.53 99.98	20-Jan-25	99.75	95.30	34
FR0078	27-Sep-18	15-May-29	8.25	4.3	3.56	6.93	↓ -0.8bps	104.82	6.853 7.080	104.27 105.13	20-Jan-25	105.15	163.35	14
FR0104	22-Aug-24	15-Jul-30	6.50	5.5	4.53	6.91	↓ -0.8bps	98.14	6.902 7.046	97.55 98.19	20-Jan-25	98.00	187.86	31
FR0052	20-Aug-09	15-Aug-30	10.50	5.6	4.15	6.95	→ 0.0bps	116.12	6.888 7.020	115.81 116.47	20-Jan-25	115.79	0.37	9
FR0082	1-Aug-19	15-Sep-30	7.00	5.7	4.49	6.97	↑ 0.3bps	100.12	6.963 7.049	99.76 100.16	20-Jan-25	99.00	15.85	22
FRSDG001	27-Oct-22	15-Oct-30	7.38	5.7	4.55	6.74	→ 0.0bps	102.97	6.613 6.848	102.45 103.57	8-Jan-25	101.50	114.00	3
FR0087	13-Aug-20	15-Feb-31	6.50	6.1	4.79	7.02	↑ 0.1bps	97.44	7.004 7.110	97.03 97.53	20-Jan-25	96.50	377.59	59
FR0085	4-May-20	15-Apr-31	7.75	6.2	4.82	7.07	→ 0.0bps	103.36	6.899 7.127	103.08 104.23	7-Jan-25	103.40	150.00	3
FR0073	6-Aug-15	15-May-31	8.75	6.3	4.81	7.02	↓ -3.2bps	108.68	7.006 7.089	108.33 108.77	20-Jan-25	111.00	4.14	2
FR0054	22-Jul-10	15-Jul-31	9.50	6.5	4.91	6.98	↑ 1.1bps	112.99	6.768 7.097	112.32 114.15	20-Jan-25	111.40	0.01	2
FR0091	8-Jul-21	15-Apr-32	6.38	7.2	5.58	7.09	↑ 0.4bps	95.99	7.058 7.113	95.87 96.17	20-Jan-25	95.30	62.23	87
FR0058	21-Jul-11	15-Jun-32	8.25	7.4	5.51	7.11	↓ -5.7bps	106.47	7.011 7.191	105.99 107.05	20-Jan-25	106.50	40.80	3
FR0074	10-Nov-16	15-Aug-32	7.50	7.6	5.55	7.12	↓ -0.5bps	102.17	7.082 7.146	102.03 102.41	20-Jan-25	103.10	10.69	8
FR0096	19-Aug-22	15-Feb-33	7.00	8.1	5.90	7.13	↑ 0.6bps	99.19	7.037 7.172	98.95 99.77	20-Jan-25	99.35	386.76	60
FR0065	30-Aug-12	15-May-33	6.63	8.3	6.19	7.15	↓ -0.8bps	96.71	7.062 7.177	96.57 97.27	20-Jan-25	93.90	23.81	38
FR0100	24-Aug-23	15-Feb-34	6.63	9.1	6.49	7.14	↑ 2.3bps	96.62	7.037 7.213	96.13 97.27	20-Jan-25	96.20	1,451.01	160
FR0068	1-Aug-13	15-Mar-34	8.38	9.2	6.28	7.17	↑ 1.4bps	108.00	7.116 7.207	107.71 108.35	20-Jan-25	107.99	210.45	25
FR0080	4-Jul-19	15-Jun-35	7.50	10.4	7.13	7.22	↑ 1.5bps	102.04	7.173 7.232	101.93 102.36	20-Jan-25	102.75	11.00	44
FR0103	8-Aug-24	15-Jul-35	6.75	10.5	7.36	7.13	↑ 1.5bps	97.20	7.089 7.227	96.54 97.52	20-Jan-25	98.00	878.92	93
FR0072	9-Jul-15	15-May-36	8.25	11.3	7.35	7.21	↓ -1.8bps	107.95	7.191 7.264	107.50 108.09	20-Jan-25	107.80	52.90	15
FR0088	7-Jan-21	15-Jun-36	6.25	11.4	7.87	7.10	↑ 0.2bps	93.41	7.090 7.179	92.84 93.10	20-Jan-25	95.50	16.64	41
FR0045	24-May-07	15-May-37	9.75	12.3	7.50	7.23	↓ -0.6bps	120.29	7.136 7.306	119.61 121.56	20-Jan-25	124.84	0.02	4
FR0093	6-Jan-22	15-Jul-37	6.38	12.5	8.36	7.09	↓ -1.3bps	94.18	6.953 7.209	93.21 95.22	20-Jan-25	96.60	22.47	33
FR0075	10-Aug-17	15-May-38	7.50	13.3	8.29	7.25	↓ -0.3bps	102.13	7.219 7.302	101.65 102.36	20-Jan-25	102.85	20.86	24
FR0098	15-Sep-22	15-Jun-38	7.13	13.4	8.46	7.23	↑ 0.2bps	99.14	7.190 7.283	98.65 99.43	20-Jan-25	100.15	75.62	40
FR0050	24-Jan-08	15-Jul-38	10.50	13.5	7.92	7.18	→ 0.0bps	128.35	7.108 7.284	127.33 129.11	8-Jan-25	128.00	4.00	1
FR0079	7-Jan-19	15-Apr-39	8.38	14.2	8.36	7.29	↓ -0.3bps	109.53	7.239 7.324	109.18 109.97	20-Jan-25	109.10	0.06	6
FR0083	7-Nov-19	15-Apr-40	7.50	15.2	8.89	7.27	↓ -0.4bps	102.11	7.214 7.306	101.75 102.60	20-Jan-25	100.00	3.90	44
FR0057	21-Apr-11	15-May-41	9.50	16.3	8.84	7.30	↓ -1.0bps	120.79	7.119 7.394	119.75 122.75	6-Dec-24	124.00	1.00	1
FR0106	9-Jan-25	15-Aug-40	7.13	15.6	8.88	7.30	↑ 1.9bps	98.40	-	-	20-Jan-25	99.65	872.87	219
FR0062	9-Feb-12	15-Apr-42	6.38	17.2	9.82	7.28	↑ 0.3bps	91.16	7.142 7.348	90.56 92.46	20-Jan-25	90.75	8.72	8
FR0092	8-Jul-21	15-Jun-42	7.13	17.4	9.76	7.27	↑ 2.1bps	98.58	7.234 7.333	97.97 98.92	20-Jan-25	97.50	32.31	51
FR0097	19-Aug-22	15-Jun-43	7.13	18.4	10.02	7.29	↓ -0.6bps	98.36	7.227 7.350	97.74 98.96	20-Jan-25	100.75	420.37	329
FR0067	18-Jul-13	15-Feb-44	8.75	19.1	9.53	7.31	↓ -1.8bps	114.71	7.141 7.413	113.53 116.61	16-Jan-25	115.00	5.00	1
FR0076	22-Sep-17	15-May-48	7.38	23.3	10.98	7.27	↓ -0.9bps	101.12	7.258 7.390	99.81 101.29	20-Jan-25	101.10	42.36	85
FR0107	9-Jan-25	15-Aug-45	7.13	20.6	10.31	7.27	↑ 0.5bps	98.43	-	-	20-Jan-25	98.70	230.46	182
FR0089	7-Jan-21	15-Aug-51	6.88	26.6	11.49	7.23	↓ -4.1bps	95.82	7.193 7.371	94.24 96.24	20-Jan-25	95.55	55.45	95
FR0102	5-Jan-24	15-Jul-54	6.88	29.5	12.22	7.22	↓ -1.1bps	95.76	7.211 7.320	94.65 95.91	20-Jan-25	98.50	50.82	98
FR0105	27-Aug-24	15-Jul-64	6.88	39.5	13.04	7.25	↑ 5.0bps	95.18	6.951 6.980	72.47 76.68	20-Jan-25	97.50	0.66	2
ORI024T6	8-Nov-23	15-Oct-29	6.35	4.7	-	7.00	→ 0.0bps	97.38	6.656 7.181	96.67 98.76	20-Jan-25	99.30	8.08	26
ORI025T6	28-Feb-24	15-Feb-30	6.40	5.1	-	7.04	↑ 0.1bps	97.28	6.730 7.175	96.71 98.59	20-Jan-25	97.00	5.58	32
ORI026T6	30-Oct-24	15-Oct-30	6.40	5.7	-	6.82	↑ 1.2bps	98.02	6.742 7.040	96.99 98.38	20-Jan-25	99.00	1.46	27
PBS017	11-Jan-18	15-Oct-25	6.13	0.7	0.70	6.33	↓ -17.8bps	99.84	6.223 6.752	99.55 99.92	20-Jan-25	101.10	238.01	18
PBS032	29-Jul-21	15-Jul-26	4.88	1.5	1.40	7.05	→ 0.0bps	96.99	6.872 7.080	96.94 97.22	20-Jan-25	97.67	326.47	354
PBS021	5-Dec-18	15-Nov-26	6.63	1.8	1.66	7.04	↑ 27.9bps	102.43	6.416 6.852	99.61 100.34	13-Jan-25	103.25	0.01	1
PBS003	2-Feb-12	15-Jan-27	6.00	2.0	1.84	6.96	↓ -8.3bps	98.26	6.756 7.082	98.03 98.62	20-Jan-25	99.20	1,010.34	400
PBS020	22-Oct-18	15-Oct-27	9.00	2.7	2.36	6.68	↑ 0.6bps	105.68	6.530 6.762	105.48 106.08	31-Jul-24	108.25	0.50	1
PBS018	4-Jun-18	15-May-28	7.63	3.3	2.86	6.70	↑ 0.7bps	102.68	6.562 6.791	102.43 103.11	3-Sep-19	99.29	2,000.00	2
PBS030	4-Jun-21	15-Jul-28	5.88	3.5	3.09	6.96	↑ 2.6bps	96.71	6.570 6.905	96.86 97.86	20-Jan-25	97.05	320.54	24
PBSG001	22-Sep-22	15-Sep-29	6.63	4.7	3.86	6.68	↑ 0.1bps	99.76	6.399 6.782	99.37 100.88	17-Jan-25	98.85	120.00	1
IFR0006	1-Apr-10	15-Mar-30	10.25	5.2	3.95	6.79	↑ 1.1bps	114.79	6.631 6.895	114.32 115.56	10-Dec-24	116.00	40.00	4
PBS023	15-May-19	15-May-30	8.13	5.3	4.25	6.80	↑ 1.2bps	105.81	6.631 6.907	105.33 106.59	14-Jan-25	104.00	0.50	1
PBS012	28-Jan-16	15-Nov-31	8.88	6.8	5.08	7.11	→ 0.0bps	109.41	6.589 7.117	109.35 112.38	17-Jan-25	109.51	5.00	1
PBS024	28-May-19	15-May-32	8.38	7.3	5.43	6.88	↑ 1.7bps	108.46	6.657 6.998	107.76 109.81	20-Dec-22	94.07	15.00	22
PBS025	29-May-19	15-May-33	8.38	8.3	5.96	6.97	↑ 1.7bps	108.75	6.767 7.091	107.95 110.08	6-Jan-25	109.76	50.80	3
PBS029	14-Jan-21	15-Mar-34	6.38	9.2	6.67	6.70	→ 0.0bps	97.82	6.541 6.918	96.35 98.86	20-Jan-25	93.50	3.57	7
PBS022	24-Jan-19	15-Apr-34	8.63	9.2	6.34	7.04	↑ 1.6bps	110.64	6.687 7.106	110.14 113.18	18-Dec-24	113.05	1.50	1
IFR0010	3-Mar-11	15-Feb-36	10.00	11.1	6.87	7.01	↑ 1.2bps	122.74	6.793 7.105	121.93 124.67	20-Dec-24	122.23	1.00	1
PBS037	12-Jan-23	15-Mar-36	6.88	11.2	7.51	6.92	↑ 0.4bps	99.64	6.813 7.026	98.83 100.47	20-Jan-25	98.20	0.03	11
PBS004	16-Feb-12	15-Feb-37	6.10	12.1	8.08	6.88	↓ -6.7bps	93.69	6.793 7.126	92.54 94.35	20-Jan-25			

PRICE INDEX



YIELD INDEX



TECHNICAL ANALYSIS

FR0101

INDICATORS	20-Jan-25	-1 Day	Change
Last Price	99.99	100.07	(0.07)
DI+	39.00	39.88	(0.88)
DI-	49.57	49.39	0.18
ADX (15D)	20.23	19.10	1.13
A/D	4,463.12	1,004.14	3,458.98
CMF(20D)	0.403	0.069	0.33
CCI	140.22	118.19	22.03
Volume (IDR bn)	95.30	2,378.79	(2,283.49)
Frequency	34	64	(30)

COMMENT

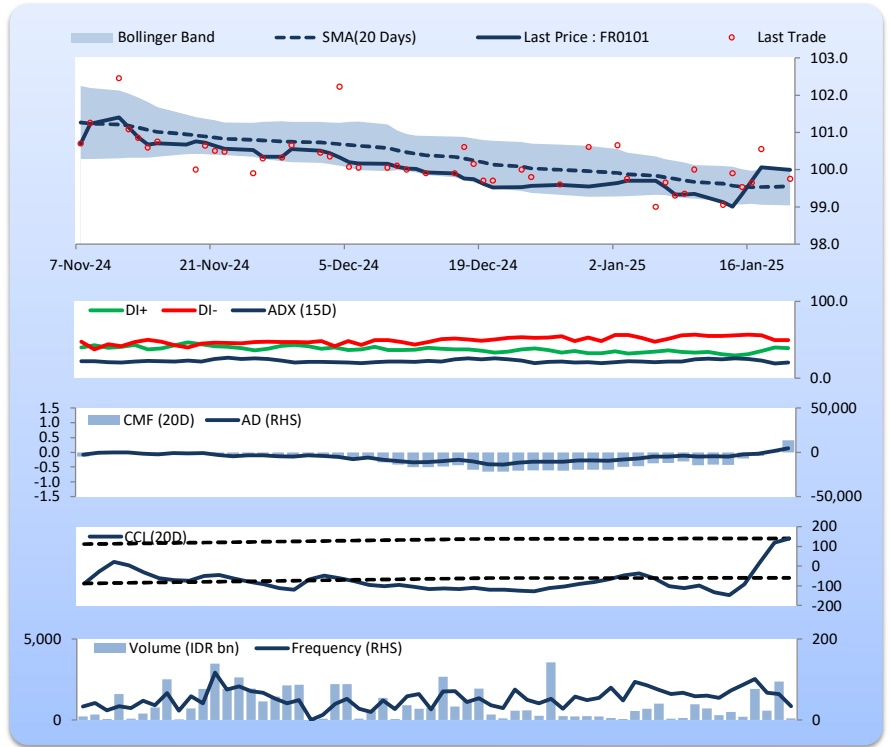
Price declined; light trade volume; downward trend continues to weaken; buying pressure increased; CCI increased.

BUY

FEATURES

Issue Date	2-Nov-23
Mature Date	15-Apr-29
Tenor	4.2
Coupon Rate	6.88
Last Yield	6.87
Modified Duration	3.56
Previous Coupon Date	15-Oct-24
Next Coupon Date	15-Apr-25

Sources: Bloomberg (Price); IDX



FR0100

INDICATORS	20-Jan-25	-1 Day	Change
Last Price	96.62	96.77	(0.15)
DI+	38.63	39.26	(0.63)
DI-	43.74	45.93	(2.19)
ADX (15D)	32.06	33.91	(1.85)
A/D	2,765.17	3,953.98	(1,188.81)
CMF(20D)	0.125	0.178	(0.05)
CCI	-12.79	-22.66	9.87
Volume (IDR bn)	1,451.01	1,762.52	(311.51)
Frequency	160	128	32

COMMENT

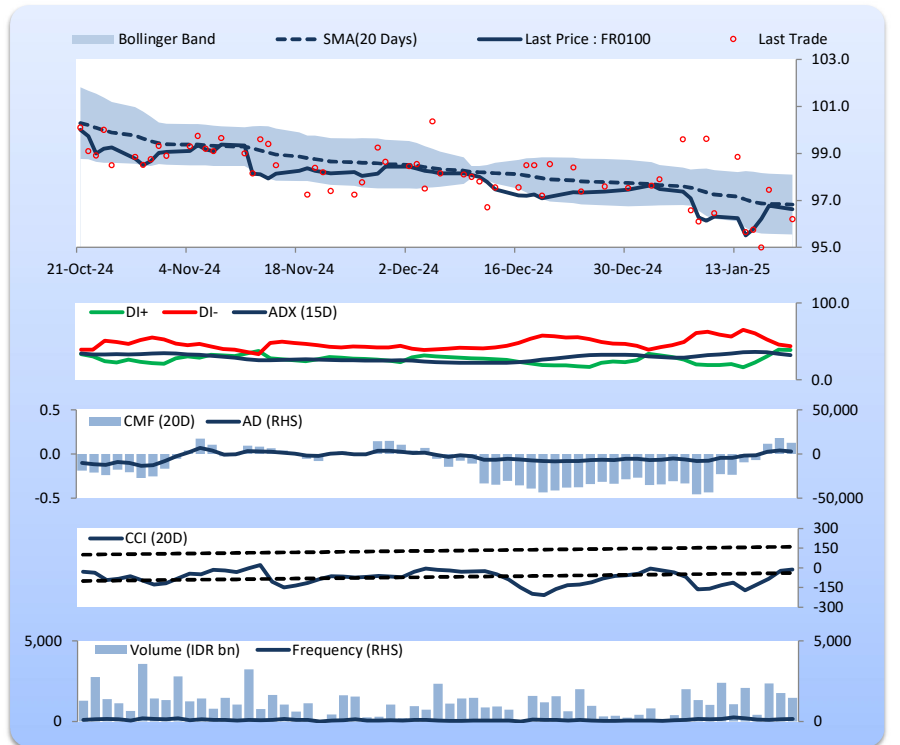
Price declined; heavy trade volume; upward trend continues to weaken; buying pressure eased; CCI increased.

SELL

FEATURES

Issue Date	24-Aug-23
Mature Date	15-Feb-34
Tenor	9.1
Coupon Rate	6.63
Last Yield	7.14
Modified Duration	6.49
Previous Coupon Date	15-Aug-24
Next Coupon Date	15-Feb-25

Sources: Bloomberg (Price); IDX



FR0097

INDICATORS	20-Jan-25	-1 Day	Change
Last Price	98.36	98.30	0.06
DI+	21.65	26.32	(4.67)
DI-	56.99	57.34	(0.35)
ADX (15D)	38.03	26.78	11.25
A/D	-596.40	-456.00	(140.40)
CMF(20D)	-0.104	-0.081	(0.02)
CCI	-71.35	-96.23	24.88
Volume (IDR bn)	420.37	123.34	297.04
Frequency	329	251	78

COMMENT

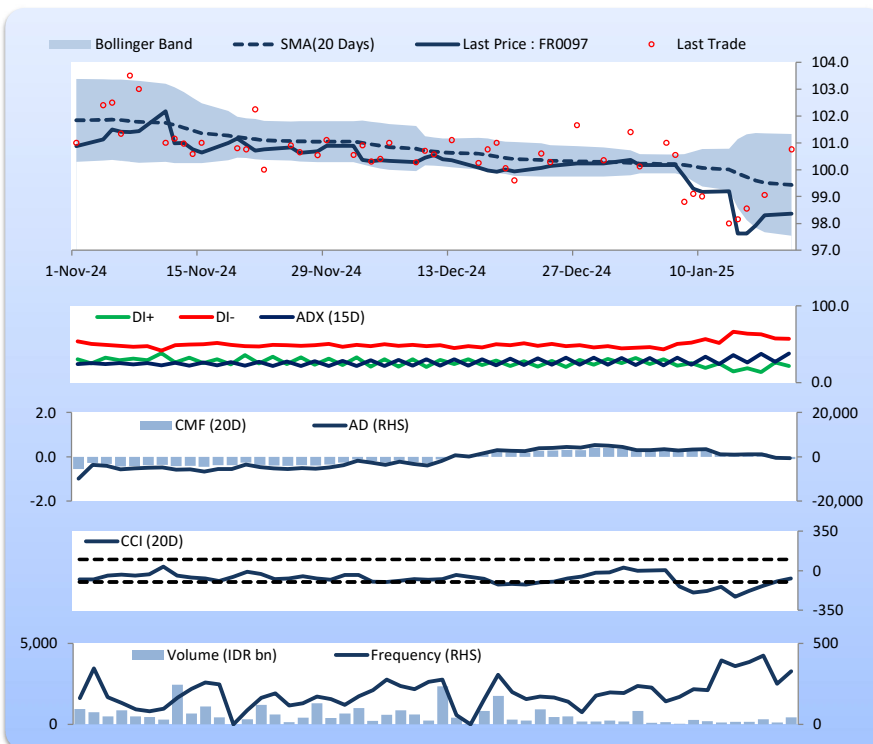
Price increased; moderate trade volume; downward trend continues to strengthen; selling pressure increased; CCI increased.

BUY

FEATURES

Issue Date	19-Aug-22
Mature Date	15-Jun-43
Tenor	18.4
Coupon Rate	7.13
Last Yield	7.29
Modified Duration	10.02
Previous Coupon Date	15-Dec-24
Next Coupon Date	15-Jun-25

Sources: Bloomberg (Price); IDX



FR0098

INDICATORS	20-Jan-25	-1 Day	Change
Last Price	99.14	99.16	(0.02)
DI+	27.36	28.02	(0.66)
DI-	48.22	49.38	(1.16)
ADX (15D)	38.38	39.15	(0.77)
A/D	641.96	-224.69	866.66
CMF(20D)	0.110	-0.034	0.14
CCI	-47.00	-59.21	12.21
Volume (IDR bn)	75.62	275.20	(199.58)
Frequency	40	96	(56)

COMMENT

Price declined slightly; light trade volume; upward trend continues to weaken; buying pressure increased; CCI increased.

SELL

FEATURES

Issue Date	15-Sep-22
Mature Date	15-Jun-38
Tenor (year)	13.4
Coupon Rate	7.13
Last Yield	7.23
Modified Duration	8.46
Previous Coupon Date	15-Dec-24
Next Coupon Date	15-Jun-25

Sources: Bloomberg (Price); IDX



Analysts: Laras Nerpatari & Eka Nuraini

DISCLAIMER: The information contained in this report has been taken from sources which we deem reliable. However, none of P.T. BRI Danareksa Sekuritas and/or its affiliated companies and/or their respective employees and/or agents makes any representation or warranty (express or implied) or accepts any responsibility or liability as to, or in relation to, the accuracy or completeness of the information and opinions contained in this report or any other such information or opinions remaining unchanged after the issue thereof. We expressly disclaim any responsibility or liability (express or implied) of P.T. BRI Danareksa Sekuritas, its affiliated companies and their respective employees and agents whatsoever and howsoever arising (including, without limitation for any claims, proceedings, action, suits, losses, expenses, damages or costs) which may be brought against or suffered by any person as a result of acting in reliance upon the whole or any part of the contents of this report and neither P.T. BRI Danareksa Sekuritas, its affiliated companies or their respective employees or agents accepts liability for any errors, omissions or mis-statements, negligent or otherwise, in the report and any liability in respect of the report or any inaccuracy therein or omission therefrom which might otherwise arise is hereby expressly disclaimed. The information contained in this report is not be taken as any recommendation made by P.T. BRI Danareksa Sekuritas or any other person to enter into any agreement with regard to any investment mentioned in this document. This report is prepared for general circulation. It does not have regards to the specific person who may receive this report. In considering any investments you should make your own independent assessment and seek your own professional financial and legal advice.