

**MOST ACTIVE GOVERNMENT BONDS**

Bond	Coupon	Maturity	Last Price	Yield	Volume (IDR bn)
FR0104	6.500	15-Jul-30	98.40	6.922	3,108.59
FR0101	6.875	15-Apr-29	100.55	6.861	2,378.79
FR0096	7.000	15-Feb-33	99.20	7.128	2,046.89
FR0100	6.625	15-Feb-34	97.45	7.121	1,762.52
FR0087	6.500	15-Feb-31	97.32	7.031	1,525.04
FR0103	6.750	15-Jul-35	98.20	7.118	1,417.75
FR0059	7.000	15-May-27	101.10	6.859	908.74
FR0107	7.125	15-Aug-45	99.70	7.274	850.75
FR0106	7.125	15-Aug-40	99.10	7.285	678.99
FR0095	6.375	15-Aug-28	98.95	6.854	571.34

Coupon, Last Price & Yield are in %; Volume is in IDR bn; Rating code: id (Pefindo) & idn (Fitch Indonesia)  
Sources: Bloomberg; Indonesia Stock Exchange (Volume)

**MOST ACTIVE CORPORATE BONDS**

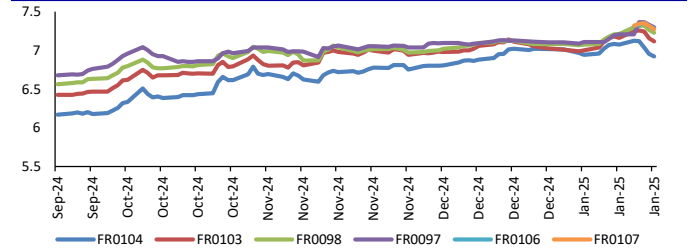
Bond	Rating	Coupon	Maturity	Last Price	Yield	Volume
PIDL01ACN1	idA+	7.250	17-Jan-26	100.00	7.25	572.57
PIDL02C27	idA	11.000	14-Jul-27	109.19	6.95	120.00
SMMA02BCN3	irAA	10.500	4-Oct-32	100.10	10.48	112.30
OPPM02C	idA+	9.750	30-Mar-27	101.19	9.15	100.00
SMPIDL01ACN1	idA+(sy)	7.250	17-Jan-26	99.95	7.30	81.80
SMMA03BCN2	BBB+(idn)	8.250	17-Jan-28	99.90	8.29	80.00
SMMA03CCN2	BBB+(idn)	9.000	17-Jan-30	100.00	9.00	73.00
INKP05CCN2	idA+	10.750	5-Dec-29	104.00	9.71	72.75
MDKA03BCN3	idA	8.250	1-Sep-25	101.40	8.14	60.00
BCAP05BCN1	idBBB+	10.750	10-Jan-28	99.90	10.79	50.00

**SOVEREIGN BOND YIELDS**

Country	Tenor	Coupon (%)	17-Jan-25	MA LTM as of Dec	MA LTM as of Nov	Spread over UST YC (bps)		
						17-Jan-25	Dec	Nov
United States	2yr		4.97	4.97	4.85			
USD	5yr		4.64	4.64	4.54			
	10yr		4.37	4.37	4.19			
German	2yr	0.25	2.21	2.08	1.95	-319	-332	-342
EUR	5yr	1.00	2.32	2.15	1.93	-232	-249	-261
	10yr	1.75	2.52	2.37	2.09	-185	-200	-210
Indonesia	2yr	4.13	60.23	8.99	6.10	5,483	359	73
USD	5yr	3.50	5.04	5.23	4.91	40	59	37
	10yr	3.85	5.22	5.26	4.97	85	89	78
Brazil	2yr	0.00	15.19	15.89	14.13	979	1,049	876
BRL	3yr	0.00	15.13	15.90	14.00	973	1,050	863
	10yr	10.00	14.98	15.20	13.44	958	980	807
Philippines	2yr	6.00	6.02	5.94	5.93	62	54	56
PHP	5yr	7.88	5.94	5.94	5.93	130	130	139
	10yr	11.38	6.34	6.14	6.00	197	177	181
Thailand	2yr	3.13	2.07	2.01	2.01	-334	-339	-336
THB	5yr	3.45	2.17	2.08	2.09	-247	-256	-245
	10yr	3.63	2.41	2.25	2.30	-196	-212	-189
India	2yr	7.59	6.68	6.73	6.66	128	133	129
INR	5yr	7.28	6.72	6.74	6.69	208	210	215
	10yr	8.83	6.76	6.78	6.74	239	241	255
Malaysia	3yr	3.17	3.46	3.51	3.48	-151	-146	-137
MYR	5yr	3.26	3.63	3.65	3.60	-101	-99	-94
	10yr	4.18	3.83	3.82	3.82	-54	-55	-37

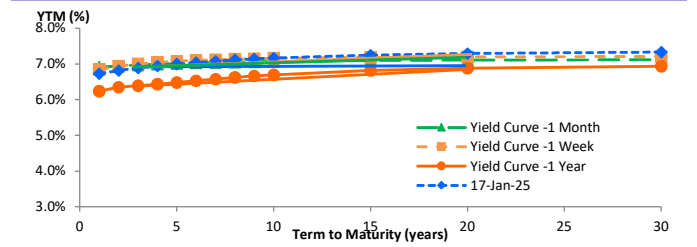
Sources: Bloomberg (Current Yield Curve), US Treasury

**YIELD OF GOVERNMENT BOND BENCHMARK (%)**



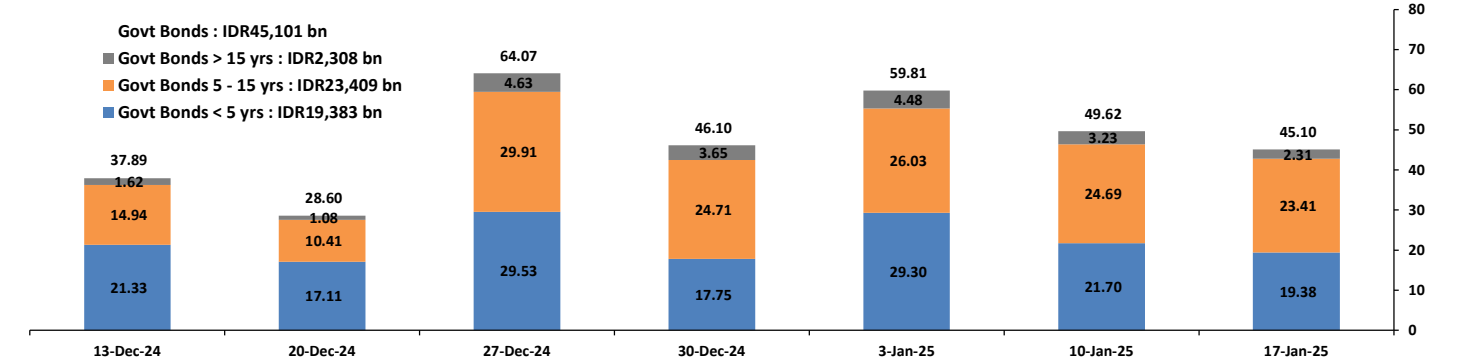
Source: DJPPR

**YIELD CURVE MOVEMENT (%)**



Source: Bloomberg

**TRADING VOLUME BY MATURITY (IDR TRILLION)**



Sources: Indonesia Stock Exchange

**CURRENCY**

Price	17-Jan-25	-1 Day	-1 Week	-1 Month	EoP2024	
DXY	109.07	↑	108.96	109.65	106.96	101.33
USD : IDR	16,365	↑	16,360	16,185	16,065	15,397
EUR : USD	1.03	↓	1.03	1.02	1.05	1.10
JPY : USD	155.82	↓	155.16	157.73	153.46	141.04
USD : CNY	7.329	↓	7.332	7.333	7.284	7.100
USD : SGD	4.507	↑	4.503	4.498	4.467	4.594
SGD : IDR	11,981	↑	11,980	11,830	11,921	11,677

Source: Bloomberg

**COMMODITY**

Price	17-Jan-25	-1 Day	-1 Week	-1 Month	EoP2024	
CPO	4,432	↓	4,471	4,710	4,889	3,662
Coal	114.70	→	114.70	113.50	129.00	146.40
Gold	2,706	↓	2,714	2,690	2,647	2,063
Nickel	15,824	→	15,824	15,453	15,341	16,435
Copper	445.65	↑	444.10	430.40	409.15	389.05
Brent	82.11	↓	83.01	80.35	73.53	77.60
Metal	2,705.94	↓	2,714.31	2,689.76	2,646.83	2,062.98

**PHEI FAIR SPREAD**

	1Y	2Y	3Y	4Y	5Y	6Y	7Y	8Y	9Y	10Y
AAA	18	23	28	35	43	51	57	63	66	69
AA+	33	38	45	55	65	73	80	85	89	92
AA	56	63	73	85	97	106	114	119	123	126
AA-	90	106	120	134	147	158	166	172	177	179
A+	134	161	178	194	209	221	231	238	243	246
A	183	217	239	258	274	288	299	306	311	314
A-	231	269	294	317	336	351	362	369	373	376
BBB+	278	316	345	372	394	410	420	427	430	432
BBB	325	360	393	425	450	467	477	482	485	486

\*interpolated, as of January 17, 2025 (bps)

**Domestic Investor**

	16-Jan-2025	WoW	MtD	YTD
Banks	1,101.1	(52.46)	49.65	49.65
Bank Indonesia (exclude repo)	1,578.0	56.37	(40.00)	(40.00)
Non-Banks:	3,394.0	3.45	23.90	23.90
Mutual Fund	187.9	0.59	0.91	0.91
Insurance & Pension Fund	1,155.5	2.93	10.28	10.28
Foreign Investor	876.1	(4.41)	(0.59)	(0.59)
Individual	547.6	3.42	5.08	5.08
Others	618.8	0.00	0.13	0.13
<b>Total</b>	<b>6,073.1</b>	<b>7.35</b>	<b>33.55</b>	<b>33.55</b>
Domestic Investor	3,619.0	(44.60)	74.14	74.14
Foreign Investor	876.1	(4.41)	(0.59)	(0.59)
Bank Indonesia (include repo)	1,493.0	3.43	6.20	6.20

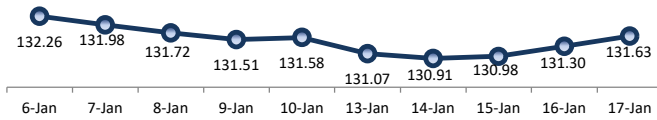
Source: DJPPR (Processed)

Sources: PHEI, Bloomberg

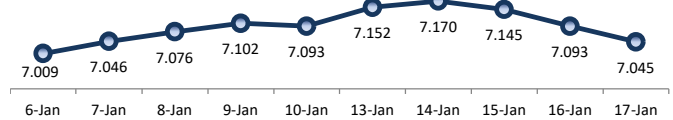
VALUATIONS OF GOVERNMENT BONDS

Bond	Issue Date	Mature Date	Coupon	TTM	Modified Duration	YTM (Change)	Prev Closing Price	Fair Yield Range	Fair Price Range	Last Trade				
										Date	Price	Vol (IDR bn)	Freq	
FR0037	18-May-06	15-Sep-26	12.00	1.7	1.45	6.83	↓ -3.3bps	107.90	6.756 6.893	107.85 108.07	13-Jan-25	107.86	13.00	4
FR0056	23-Sep-10	15-Sep-26	8.38	1.7	1.49	6.84	↓ -2.5bps	102.34	6.748 6.879	102.29 102.50	17-Jan-25	103.23	14.00	17
FR0090	8-Jul-11	15-Apr-27	5.13	2.2	2.05	6.86	↓ -6.3bps	96.46	6.797 6.911	96.34 96.57	17-Jan-25	96.85	95.02	37
FR0059	15-Sep-11	15-May-27	7.00	2.3	2.09	6.86	↓ -0.7bps	100.28	6.791 6.882	100.24 100.43	17-Jan-25	101.10	908.74	53
FR0042	25-Jan-07	15-Jul-27	10.25	2.5	2.20	6.96	↑ 0.6bps	107.38	6.822 6.930	107.49 107.84	17-Jan-25	108.31	0.00	1
FR0094	4-Mar-22	15-Jan-28	5.60	3.0	2.70	6.87	→ 0.0bps	96.61	6.621 6.858	96.64 97.27	27-Dec-24	95.25	0.50	1
FR0047	30-Aug-07	15-Feb-28	10.00	3.1	2.56	6.74	↓ -7.4bps	108.89	6.575 6.890	108.49 109.40	17-Jan-25	110.55	0.01	1
FR0064	13-Aug-12	15-May-28	6.13	3.3	2.92	6.84	↓ -7.2bps	97.90	6.850 6.937	97.61 97.86	17-Jan-25	98.25	132.95	21
FR0095	19-Aug-22	15-Aug-28	6.38	3.6	3.06	6.85	↓ -7.0bps	98.50	6.859 6.926	98.27 98.48	17-Jan-25	98.95	571.34	49
FR0099	27-Jan-23	15-Jan-29	6.40	4.0	3.47	6.53	↓ -0.6bps	99.55	6.378 6.536	99.53 100.08	25-Sep-23	99.77	139.50	19
FR0071	12-Sep-13	15-Mar-29	9.00	4.2	3.37	6.92	↓ -6.6bps	107.37	6.916 6.995	107.11 107.40	17-Jan-25	107.50	224.49	11
FR0101	2-Nov-23	15-Apr-29	6.88	4.2	3.57	6.86	↓ -9.4bps	100.04	6.890 6.993	99.56 99.93	17-Jan-25	100.55	2,378.79	64
FR0078	27-Sep-18	15-May-29	8.25	4.3	3.57	6.94	↓ -8.1bps	104.81	6.808 7.106	104.18 105.31	17-Jan-25	104.90	113.18	13
<b>FR0104</b>	<b>22-Aug-24</b>	<b>15-Jul-30</b>	<b>6.50</b>	<b>5.5</b>	<b>4.54</b>	<b>6.92</b>	<b>↓ -3.4bps</b>	<b>98.10</b>	<b>6.915 7.048</b>	<b>97.54 98.13</b>	<b>17-Jan-25</b>	<b>98.40</b>	<b>3,108.59</b>	<b>91</b>
FR0052	20-Aug-09	15-Aug-30	10.50	5.6	4.15	6.96	↓ -4.9bps	116.13	6.880 7.032	115.77 116.53	17-Jan-25	118.13	0.03	4
FR0082	1-Aug-19	15-Sep-30	7.00	5.7	4.50	6.97	↓ -5.2bps	100.12	6.976 7.055	99.73 100.10	17-Jan-25	100.70	555.50	29
FRSDG001	27-Oct-22	15-Oct-30	7.38	5.7	4.56	6.74	↓ -1.4bps	102.97	6.621 6.861	102.39 103.54	8-Jan-25	101.50	114.00	3
FR0087	13-Aug-20	15-Feb-31	6.50	6.1	4.80	7.03	↓ -6.9bps	97.41	7.021 7.120	96.97 97.45	17-Jan-25	97.32	1,525.04	73
FR0085	4-May-20	15-Apr-31	7.75	6.2	4.82	7.07	↓ -1.5bps	103.36	6.890 7.140	103.01 104.29	7-Jan-25	103.40	150.00	3
FR0073	6-Aug-15	15-May-31	8.75	6.3	4.81	7.05	↓ -3.6bps	108.52	7.021 7.100	108.28 108.70	17-Jan-25	108.20	2.74	6
FR0054	22-Jul-10	15-Jul-31	9.50	6.5	4.92	6.97	↓ -4.4bps	113.05	6.766 7.106	112.28 114.18	17-Jan-25	112.35	13.00	1
FR0091	8-Jul-21	15-Apr-32	6.38	7.2	5.58	7.10	↓ -5.7bps	95.96	7.068 7.122	95.81 96.11	17-Jan-25	96.06	414.26	87
FR0058	21-Jul-11	15-Jun-32	8.25	7.4	5.51	7.17	↓ -1.0bps	106.13	7.019 7.207	105.90 107.01	17-Jan-25	106.35	44.97	6
FR0074	10-Nov-16	15-Aug-32	7.50	7.6	5.56	7.13	↓ -4.3bps	102.12	7.091 7.156	101.98 102.36	17-Jan-25	102.75	62.60	17
FR0096	19-Aug-22	15-Feb-33	7.00	8.1	5.91	7.13	↓ -3.8bps	99.22	7.047 7.180	98.90 99.71	17-Jan-25	99.20	2,046.89	73
FR0065	30-Aug-12	15-May-33	6.63	8.3	6.20	7.16	↓ -3.9bps	96.67	7.072 7.184	96.53 97.21	17-Jan-25	95.70	30.96	30
FR0100	24-Aug-23	15-Feb-34	6.63	9.1	6.50	7.12	↓ -7.7bps	96.72	7.046 7.221	96.07 97.21	17-Jan-25	97.45	1,762.52	128
FR0068	1-Aug-13	15-Mar-34	8.38	9.2	6.29	7.15	↓ -4.7bps	108.10	7.125 7.217	107.65 108.29	17-Jan-25	108.80	212.54	20
FR0080	4-Jul-19	15-Jun-35	7.50	10.4	7.14	7.20	↓ -3.6bps	102.15	7.172 7.230	101.94 102.37	17-Jan-25	102.50	132.53	41
<b>FR0103</b>	<b>8-Aug-24</b>	<b>15-Jul-35</b>	<b>6.75</b>	<b>10.5</b>	<b>7.38</b>	<b>7.12</b>	<b>↓ -4.0bps</b>	<b>97.31</b>	<b>7.090 7.229</b>	<b>96.52 97.51</b>	<b>17-Jan-25</b>	<b>98.20</b>	<b>1,417.75</b>	<b>113</b>
FR0072	9-Jul-15	15-May-36	8.25	11.3	7.36	7.22	↓ -5.7bps	107.82	7.194 7.264	107.51 108.07	17-Jan-25	107.87	212.68	23
FR0088	7-Jan-21	15-Jun-36	6.25	11.4	7.87	7.13	↓ -2.3bps	93.21	7.099 7.177	92.86 93.42	17-Jan-25	91.90	22.47	43
FR0045	24-May-07	15-May-37	9.75	12.3	7.50	7.24	↓ -3.7bps	120.24	7.136 7.306	119.62 121.18	17-Jan-25	124.85	0.03	2
FR0093	6-Jan-22	15-Jul-37	6.38	12.5	8.37	7.10	↓ -5.7bps	94.07	6.942 7.211	93.19 95.31	17-Jan-25	93.00	3.62	27
FR0075	10-Aug-17	15-May-38	7.50	13.3	8.29	7.25	↓ -2.7bps	102.06	7.220 7.302	101.65 102.36	17-Jan-25	102.60	13.38	16
FR0098	15-Sep-22	15-Jun-38	7.13	13.4	8.47	7.23	↓ -3.7bps	99.13	7.192 7.284	98.65 99.42	17-Jan-25	99.35	275.20	96
FR0050	24-Jan-08	15-Jul-38	10.50	13.5	7.93	7.18	↓ -15.8bps	128.35	7.110 7.286	127.32 129.11	8-Jan-25	128.00	4.00	1
FR0079	7-Jan-19	15-Apr-39	8.38	14.2	8.36	7.29	↓ -1.8bps	109.49	7.237 7.324	109.18 109.99	17-Jan-25	110.05	99.01	33
FR0083	7-Nov-19	15-Apr-40	7.50	15.2	8.90	7.28	↓ -3.2bps	102.00	7.209 7.307	101.74 102.65	17-Jan-25	102.70	51.94	69
FR0057	21-Apr-11	15-May-41	9.50	16.3	8.84	7.31	↓ -1.9bps	120.69	7.120 7.395	119.75 122.75	6-Dec-24	124.00	1.00	1
<b>FR0106</b>	<b>9-Jan-25</b>	<b>15-Aug-40</b>	<b>7.13</b>	<b>15.6</b>	<b>8.99</b>	<b>7.29</b>	<b>↓ -2.7bps</b>	<b>98.52</b>	-	-	<b>17-Jan-25</b>	<b>99.10</b>	<b>678.99</b>	<b>252</b>
FR0062	9-Feb-12	15-Apr-42	6.38	17.2	9.83	7.28	↓ -0.9bps	91.19	7.128 7.346	90.58 92.58	17-Jan-25	94.25	7.83	3
FR0092	8-Jul-21	15-Jun-42	7.13	17.4	9.77	7.25	↓ -5.5bps	98.76	7.229 7.329	98.00 98.97	17-Jan-25	100.15	99.43	51
FR0097	19-Aug-22	15-Jun-43	7.13	18.4	10.03	7.30	↓ -3.7bps	98.29	7.215 7.338	97.86 99.08	17-Jan-25	99.05	123.34	251
FR0067	18-Jul-13	15-Feb-44	8.75	19.1	9.53	7.33	↓ -2.0bps	114.51	7.121 7.402	113.65 116.84	16-Jan-25	115.00	5.00	1
FR0076	22-Sep-17	15-May-48	7.38	23.3	10.98	7.28	↓ -2.3bps	101.02	7.263 7.387	99.85 101.23	17-Jan-25	102.75	41.18	63
<b>FR0107</b>	<b>9-Jan-25</b>	<b>15-Aug-45</b>	<b>7.13</b>	<b>20.6</b>	<b>10.32</b>	<b>7.27</b>	<b>↓ -4.2bps</b>	<b>98.42</b>	-	-	<b>17-Jan-25</b>	<b>99.70</b>	<b>850.75</b>	<b>190</b>
FR0089	7-Jan-21	15-Aug-51	6.88	26.6	11.47	7.27	↓ -1.0bps	95.39	7.195 7.367	94.29 96.22	17-Jan-25	95.50	25.92	72
FR0102	5-Jan-24	15-Jul-54	6.88	29.5	12.22	7.24	↓ -2.2bps	95.59	7.214 7.314	94.71 95.88	17-Jan-25	94.25	43.96	106
FR0105	27-Aug-24	15-Jul-64	6.88	39.5	13.11	7.20	↓ -1.5bps	95.77	6.592 7.112	96.88 103.97	17-Jan-25	96.55	1.71	4
ORI024T6	8-Nov-23	15-Oct-29	6.35	4.7	-	7.00	→ 0.0bps	97.38	6.628 7.149	96.79 98.87	17-Jan-25	98.75	5.24	5
ORI025T6	28-Feb-24	15-Feb-30	6.40	5.1	-	7.04	↑ 0.1bps	97.28	6.665 7.185	96.67 98.86	17-Jan-25	99.95	4.21	14
ORI026T6	30-Oct-24	15-Oct-30	6.40	5.7	-	6.83	↑ 12.0bps	97.96	6.752 7.047	96.95 98.33	17-Jan-25	98.50	2.04	9
PBS017	11-Jan-18	15-Oct-25	6.13	0.7	0.70	6.51	↑ 0.1bps	99.72	6.219 6.739	99.55 99.92	17-Jan-25	99.88	18.67	6
PBS032	29-Jul-21	15-Jul-26	4.88	1.5	1.41	7.05	→ 0.0bps	96.99	6.877 7.076	96.93 97.20	17-Jan-25	97.30	382.33	349
PBS021	5-Dec-18	15-Nov-26	6.63	1.8	1.67	6.79	↑ 3.6bps	102.86	6.435 6.770	99.74 100.31	13-Jan-25	103.25	0.01	1
<b>PBS003</b>	<b>2-Feb-12</b>	<b>15-Jan-27</b>	<b>6.00</b>	<b>2.0</b>	<b>1.84</b>	<b>7.04</b>	<b>↑ 3.9bps</b>	<b>98.11</b>	<b>6.706 7.102 97.98 98.70</b>	<b>17-Jan-25</b>	<b>98.40</b>	<b>112.37</b>	<b>166</b>	
PBS020	22-Oct-18	15-Oct-27	9.00	2.7	2.37	6.71	↑ 5.6bps	105.62	6.468 6.798	105.41 106.25	31-Jul-24	108.25	0.50	1
PBS018	4-Jun-18	15-May-28	7.63	3.3	2.87	6.73	↑ 6.1bps	102.60	6.507 6.826	102.33 103.28	3-Sep-19	99.29	2,000.00	2
<b>PBS030</b>	<b>4-Jun-21</b>	<b>15-Jul-28</b>	<b>5.88</b>	<b>3.5</b>	<b>3.10</b>	<b>6.88</b>	<b>→ 0.0bps</b>	<b>96.94</b>	<b>6.608 6.846 97.03 97.74</b>	<b>17-Jan-25</b>	<b>95.55</b>	<b>4.76</b>	<b>12</b>	
PBSG001	22-Sep-22	15-Sep-29	6.63	4.7	3.86	6.68	↑ 3.9bps	99.76	6.396 6.771	99.41 100.90	17-Jan-25	98.85	120.00	1
IFR0006	1-Apr-10	15-Mar-30	10.25	5.2	3.95	6.81	↑ 7.0bps	114.71	6.592 6.916	114.24 115.76	10-Dec-24	116.00	40.00	4
PBS023	15-May-19	15-May-30	8.13	5.3	4.26	6.82	↑ 7.0bps	105.73	6.594 6.930	105.23 106.77	14-Jan-25	104.00	0.50	1
PBS012	28-Jan-16	15-Nov-31	8.88	6.8	5.10	6.97	→ 0.0bps	110.17	6.558 7.079	109.57 112.57	17-Jan-25	109.51	5.00	1
PBS024	28-May-19	15-May-32	8.38	7.3	5.44	6.89	↑ 8.4bps	108.44	6.642 7.013	107.68 109.91	20-Dec-22	94.07	15.00	22
PBS025	29-May-19	15-May-33	8.38	8.3	5.97	6.97	↑ 9.5bps	108.75	6.754 7.108	107.85 110.18	6-Jan-25	109.76	50.80	3
PBS029	14-Jan-21	15-Mar-34	6.38	9.2	6.67	6.70	↓ -0.1bps	97.82	6.554 6.930	96.27 98.77	17-Jan-25	97.85	1.95	3
PBS022	24-Jan-19	15-Apr-34	8.63	9.2	6.35	7.03	↑ 10.4bps	110.67	6.677 7.103	110.17 113.25	18-Dec-24	113.05	1.50	1
IFR0010	3-Mar-11	15-Feb-36	10.00	11.1	6.88	7.00	↑ 12.0bps	122.80	6.781 7.101	121.97 124.79	20-Dec-24	122.23	1.00	1
PBS037	12-Jan-23	15-Mar-36	6.88	11.2	7.52	6.92	→ 0.0bps	99.67	6.807 7.027	98.83 100.52	17-Jan-25	97.95	0.23	26
PBS004	16-Feb-12	15-Feb-37	6.10	12.1	8.07	6.94	↑ 9.3bps	93.17	6.797 7.027	92.53 94.32	17-Jan-2			

PRICE INDEX



YIELD INDEX



TECHNICAL ANALYSIS

FR0101

INDICATORS	17-Jan-25	-1 Day	Change
Last Price	100.04	99.70	0.34
DI+	39.68	35.21	4.46
DI-	49.56	55.75	(6.18)
ADX (15D)	19.13	22.60	(3.47)
A/D	1,004.14	-1,552.81	2,556.94
CMF(20D)	0.069	-0.125	0.19
CCI	113.31	13.44	99.86
Volume (IDR bn)	2,378.79	566.26	1,812.53
Frequency	64	67	(3)

COMMENT

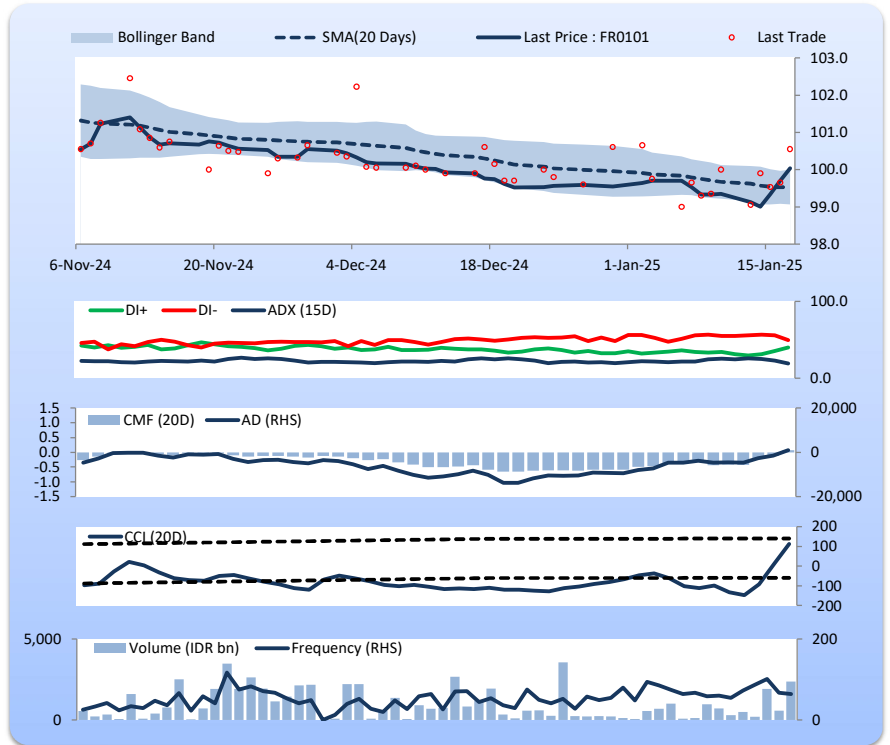
Price increased; heavy trade volume; upward trend continues to weaken; buying pressure increased; CCI increased.

BUY

FEATURES

Issue Date	2-Nov-23
Mature Date	15-Apr-29
Tenor	4.2
Coupon Rate	6.88
Last Yield	6.86
Modified Duration	3.57
Previous Coupon Date	15-Oct-24
Next Coupon Date	15-Apr-25

Sources: Bloomberg (Price); IDX



FR0100

INDICATORS	17-Jan-25	-1 Day	Change
Last Price	96.72	96.23	0.50
DI+	38.67	30.50	8.17
DI-	46.38	52.55	(6.18)
ADX (15D)	33.99	35.77	(1.78)
A/D	3,895.36	2,487.75	1,407.61
CMF(20D)	0.176	0.115	0.06
CCI	-25.56	-82.99	57.43
Volume (IDR bn)	1,762.52	2,350.71	(588.19)
Frequency	128	99	29

COMMENT

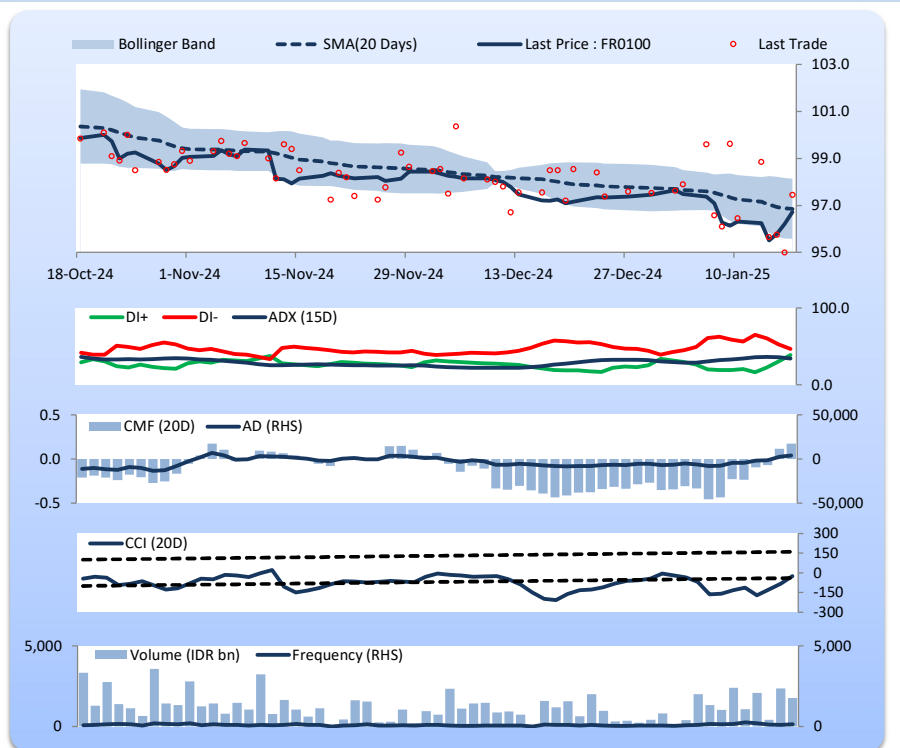
Price increased; heavy trade volume; upward trend continues to weaken; buying pressure increased; CCI increased.

BUY

FEATURES

Issue Date	24-Aug-23
Mature Date	15-Feb-34
Tenor	9.1
Coupon Rate	6.63
Last Yield	7.12
Modified Duration	6.50
Previous Coupon Date	15-Aug-24
Next Coupon Date	15-Feb-25

Sources: Bloomberg (Price); IDX



FR0097

INDICATORS	17-Jan-25	-1 Day	Change
Last Price	98.29	97.92	0.37
DI+	26.13	13.66	12.48
DI-	57.49	62.92	(5.43)
ADX (15D)	26.81	37.54	(10.73)
A/D	-451.81	1,169.78	(1,621.59)
CMF(20D)	-0.080	0.162	(0.24)
CCI	-96.81	-135.08	38.27
Volume (IDR bn)	123.34	319.98	(196.64)
Frequency	251	426	(175)

COMMENT

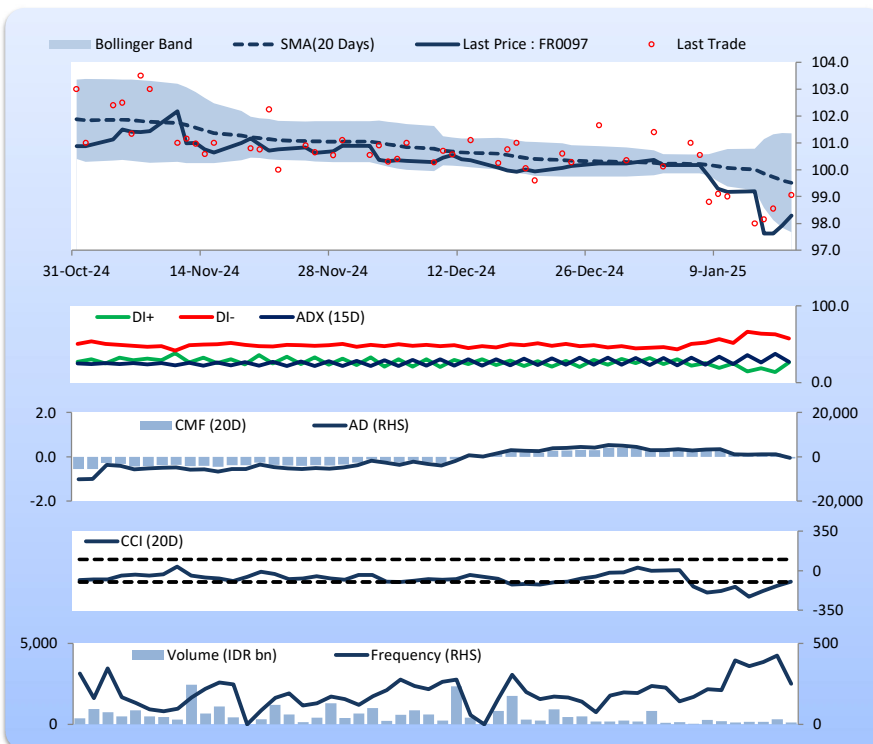
Price increased; light trade volume; upward trend continues to weaken; selling pressure increased; CCI increased.

BUY

FEATURES

Issue Date	19-Aug-22
Mature Date	15-Jun-43
Tenor	18.4
Coupon Rate	7.13
Last Yield	7.29
Modified Duration	10.03
Previous Coupon Date	15-Dec-24
Next Coupon Date	15-Jun-25

Sources: Bloomberg (Price); IDX



FR0098

INDICATORS	17-Jan-25	-1 Day	Change
Last Price	99.13	98.82	0.31
DI+	28.02	21.50	6.52
DI-	49.38	54.35	(4.97)
ADX (15D)	39.15	39.98	(0.83)
A/D	-262.84	-576.92	314.08
CMF(20D)	-0.039	-0.088	0.05
CCI	-60.00	-103.00	43.00
Volume (IDR bn)	275.20	245.49	29.71
Frequency	96	84	12

COMMENT

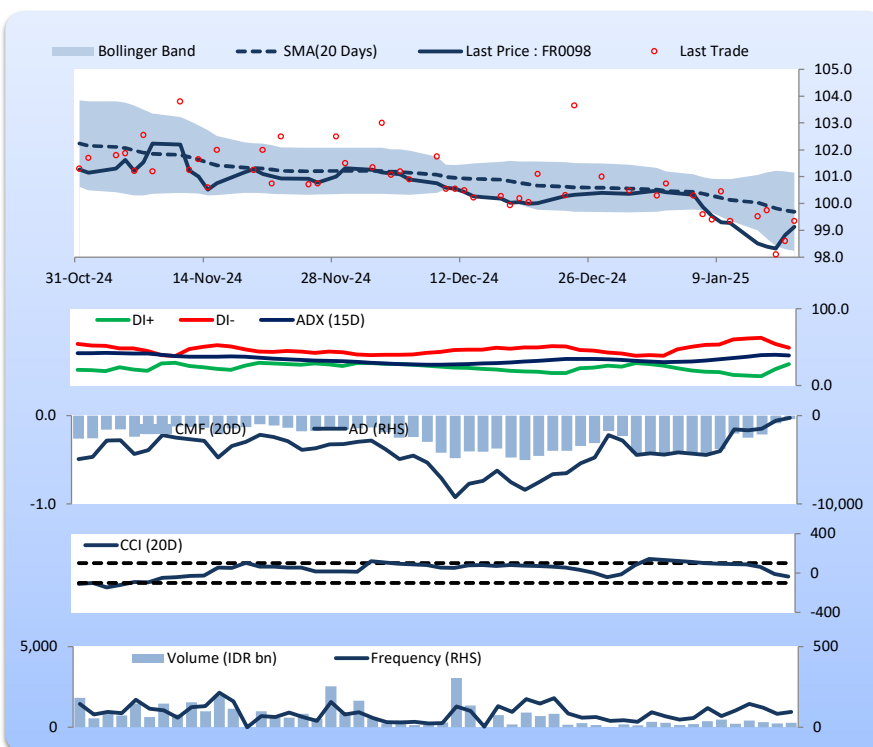
Price increased; moderate trade volume; upward trend continues to weaken; selling pressure eased; CCI increased.

BUY

FEATURES

Issue Date	15-Sep-22
Mature Date	15-Jun-38
Tenor (year)	13.4
Coupon Rate	7.13
Last Yield	7.23
Modified Duration	8.47
Previous Coupon Date	15-Dec-24
Next Coupon Date	15-Jun-25

Sources: Bloomberg (Price); IDX



Analysts: Laras Nerpatari & Eka Nuraini

**DISCLAIMER:** The information contained in this report has been taken from sources which we deem reliable. However, none of P.T. BRI Danareksa Sekuritas and/or its affiliated companies and/or their respective employees and/or agents makes any representation or warranty (express or implied) or accepts any responsibility or liability as to, or in relation to, the accuracy or completeness of the information and opinions contained in this report or any other such information or opinions remaining unchanged after the issue thereof. We expressly disclaim any responsibility or liability (express or implied) of P.T. BRI Danareksa Sekuritas, its affiliated companies and their respective employees and agents whatsoever and howsoever arising (including, without limitation for any claims, proceedings, action, suits, losses, expenses, damages or costs) which may be brought against or suffered by any person as a result of acting in reliance upon the whole or any part of the contents of this report and neither P.T. BRI Danareksa Sekuritas, its affiliated companies or their respective employees or agents accepts liability for any errors, omissions or mis-statements, negligent or otherwise, in the report and any liability in respect of the report or any inaccuracy therein or omission thereof which might otherwise arise is hereby expressly disclaimed. The information contained in this report is not taken as any recommendation made by P.T. BRI Danareksa Sekuritas or any other person to enter into any agreement with regard to any investment mentioned in this document. This report is prepared for general circulation. It does not have regards to the specific person who may receive this report. In considering any investments you should make your own independent assessment and seek your own professional financial and legal advice.