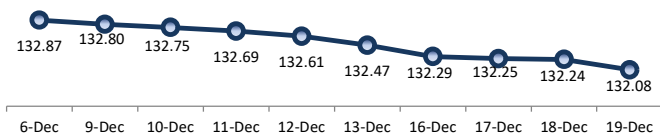
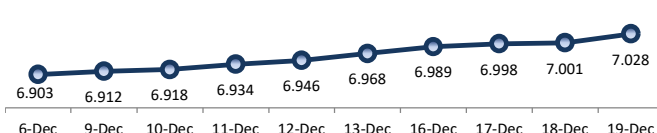


PRICE INDEX



YIELD INDEX



TECHNICAL ANALYSIS

FR0101

INDICATORS	19-Dec-24	-1 Day	Change
Last Price	99.61	99.74	(0.13)
DI+	36.46	38.66	(2.20)
DI-	52.95	52.16	0.79
ADX (15D)	20.83	19.71	1.12
A/D	-11,808.27	-13,876.62	2,068.35
CMF(20D)	-0.620	-0.659	0.04
CCI	-126.04	-119.50	(6.54)
Volume (IDR bn)	210.19	231.28	(21.09)
Frequency	57	28	29

COMMENT

Price declined; moderate trade volume; downward trend continues to weaken; selling pressure eased; CCI declined.

SELL

FEATURES

Issue Date	2-Nov-23
Mature Date	15-Apr-29
Tenor	4.3
Coupon Rate	6.88
Last Yield	6.98
Modified Duration	3.64
Previous Coupon Date	15-Oct-24
Next Coupon Date	15-Apr-25

Sources: Bloomberg (Price); IDX



FR0100

INDICATORS	19-Dec-24	-1 Day	Change
Last Price	97.04	97.26	(0.22)
DI+	17.31	18.89	(1.58)
DI-	55.49	55.01	0.48
ADX (15D)	30.68	29.13	1.55
A/D	-8,712.47	-7,808.19	(904.28)
CMF(20D)	-0.415	-0.380	(0.04)
CCI	-128.74	-132.81	4.07
Volume (IDR bn)	2,013.62	632.54	1,381.08
Frequency	106	63	43

COMMENT

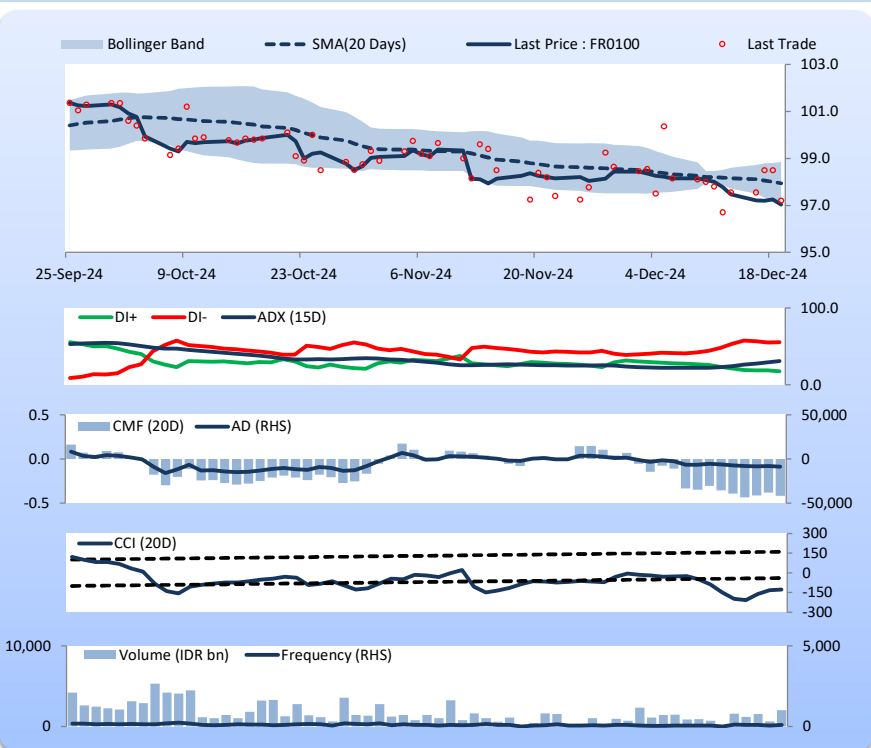
Price declined; heavy trade volume; downward trend continues to strengthen; selling pressure increased; CCI increased.

SELL

FEATURES

Issue Date	24-Aug-23
Mature Date	15-Feb-34
Tenor	9.2
Coupon Rate	6.63
Last Yield	7.07
Modified Duration	6.58
Previous Coupon Date	15-Aug-24
Next Coupon Date	15-Feb-25

Sources: Bloomberg (Price); IDX



FR0097

INDICATORS	19-Dec-24	-1 Day	Change
Last Price	100.01	99.92	0.08
DI+	20.62	28.01	(7.39)
DI-	48.06	51.08	(3.02)
ADX (15D)	31.72	22.86	8.85
A/D	3,889.97	2,529.06	1,360.92
CMF(20D)	0.281	0.179	0.10
CCI	-102.96	-123.66	20.70
Volume (IDR bn)	930.94	238.98	691.96
Frequency	173	155	18

COMMENT

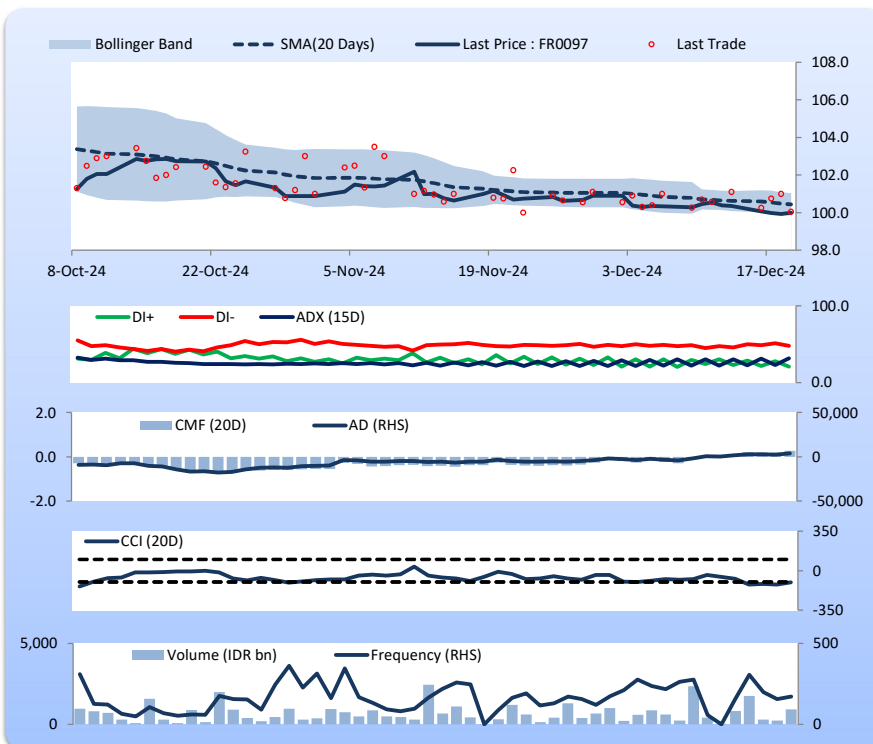
Price increased; heavy trade volume; downward trend continues to strengthen; buying pressure increased; CCI increased.

HOLD

FEATURES

Issue Date	19-Aug-22
Mature Date	15-Jun-43
Tenor	18.5
Coupon Rate	7.13
Last Yield	7.12
Modified Duration	10.18
Previous Coupon Date	15-Dec-24
Next Coupon Date	15-Jun-25

Sources: Bloomberg (Price); IDX



FR0098

INDICATORS	19-Dec-24	-1 Day	Change
Last Price	99.96	100.06	(0.09)
DI+	16.46	17.99	(1.53)
DI-	51.50	49.80	1.70
ADX (15D)	33.60	32.32	1.28
A/D	-6,746.86	-7,535.32	788.46
CMF(20D)	-0.404	-0.458	0.05
CCI	-127.63	-132.18	4.55
Volume (IDR bn)	827.49	697.15	130.34
Frequency	181	147	34

COMMENT

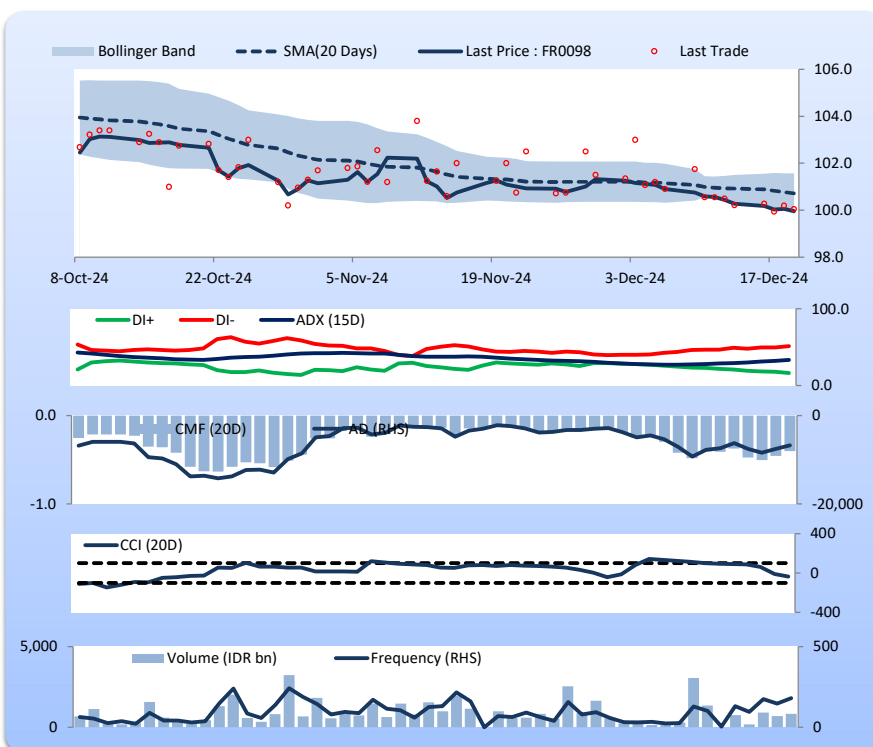
Price declined; heavy trade volume; downward trend continues to strengthen; selling pressure eased; CCI increased.

SELL

FEATURES

Issue Date	15-Sep-22
Mature Date	15-Jun-38
Tenor (year)	13.5
Coupon Rate	7.13
Last Yield	7.13
Modified Duration	8.57
Previous Coupon Date	15-Dec-24
Next Coupon Date	15-Jun-25

Sources: Bloomberg (Price); IDX



Analysts: Laras Nerpatari & Eka Nuraini

DISCLAIMER: The information contained in this report has been taken from sources which we deem reliable. However, none of P.T. BRI Danareksa Sekuritas and/or its affiliated companies and/or their respective employees and/or agents makes any representation or warranty (express or implied) or accepts any responsibility or liability as to, or in relation to, the accuracy or completeness of the information and opinions contained in this report or as to any information contained in this report or any other such information or opinions remaining unchanged after the issue thereof. We expressly disclaim any responsibility or liability (express or implied) of P.T. BRI Danareksa Sekuritas, its affiliated companies and their respective employees and agents whatsoever and howsoever arising (including, without limitation for any claims, proceedings, action, suits, losses, expenses, damages or costs) which may be brought against or suffered by any person as a result of acting in reliance upon the whole or any part of the contents of this report and neither P.T. BRI Danareksa Sekuritas, its affiliated companies or their respective employees or agents accept liability for any errors, omissions or mis-statements, negligent or otherwise, in the report and any liability in respect of the report or any inaccuracy therein or omission therefrom which might otherwise arise is hereby expressly disclaimed. The information contained in this report is not to be taken as any recommendation made by P.T. BRI Danareksa Sekuritas or any other person to enter into any agreement with regard to any investment mentioned in this document. This report is prepared for general circulation. It does not have regards to the specific person who may receive this report. In considering any investments you should make your own independent assessment and seek your own professional financial and legal advice.