

**MOST ACTIVE GOVERNMENT BONDS**

Bond	Coupon	Maturity	Last Price	Yield	Volume (IDR bn)
FR0103	6.750	15-Jul-35	97.41	7.108	1,265.81
PBS038	6.875	15-Dec-49	97.31	7.123	730.92
FR0104	6.500	15-Jul-30	97.91	6.952	706.66
FR0098	7.125	15-Jun-38	100.19	7.120	697.15
FR0100	6.625	15-Feb-34	98.50	7.037	632.54
FR0059	7.000	15-May-27	100.50	6.870	546.97
FR0081	6.500	15-Jun-25	99.84	6.783	527.28
FR0056	8.375	15-Sep-26	102.30	6.906	508.07
FR0072	8.250	15-May-36	108.44	7.138	397.21
FR0082	7.000	15-Sep-30	100.00	7.014	378.47

Coupon, Last Price & Yield are in %; Volume is in IDR bn; Rating code: id(Pefindo) & idn (Fitch Indonesia)  
Sources: Bloomberg; Indonesia Stock Exchange (Volume)

**MOST ACTIVE CORPORATE BONDS**

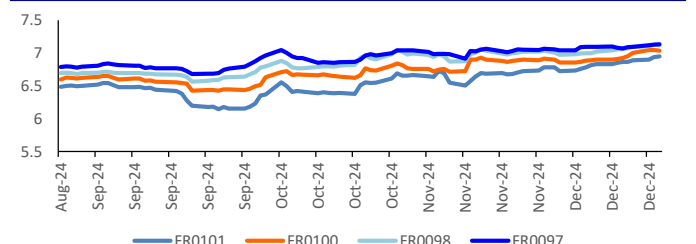
Bond	Rating	Coupon	Maturity	Last Price	Yield	Volume
SMMF03BCN1	irA+	10.250	7-Feb-26	102.55	7.88	251.60
SMDSSA01CCN3	idAA(sy)	8.875	26-Nov-29	100.02	8.87	136.00
INKP05BCN2	idA+	10.250	5-Dec-27	100.00	10.25	109.00
INKP05CCN2	idA+	8.750	13-Dec-29	100.00	8.75	88.00
WSKT03BCN2	idA+	9.500	13-Dec-31	91.90	11.19	63.50
INKP05BCN1	idA+	9.500	13-Dec-31	105.30	8.49	56.00
OPPM03B	idA+	8.000	13-Dec-27	104.10	6.48	50.00
SMINKP04BCN1	idA+(sy)	10.750	4-Oct-29	104.10	9.67	50.00
SMINKP04BCN2	idA+(sy)	10.250	5-Dec-27	99.92	10.28	50.00
OPPM01BCN2	idA+	8.000	13-Dec-27	101.70	7.36	44.00

**SOVEREIGN BOND YIELDS**

Country	Tenor	Coupon (%)	18-Dec-24		MA LTM as		Spread over UST YC (bps)		
			of Nov	of Oct	18-Dec-24	Nov	Oct		
United States	2yr		4.97	4.97	4.85				
USD	5yr		4.64	4.64	4.54				
	10yr		4.37	4.37	4.19				
German	2yr	0.25	2.04	1.95	2.28	-336	-345	-309	
EUR	5yr	1.00	2.07	1.93	2.27	-257	-271	-227	
	10yr	1.75	2.25	2.09	2.39	-212	-228	-180	
Indonesia	2yr	4.13	6.90	6.10	5.72	150	70	35	
USD	5yr	3.50	5.03	4.91	4.70	39	27	16	
	10yr	3.85	5.08	4.97	4.86	71	60	67	
Brazil	2yr	0.00	15.51	-	13.02	1,011	-	765	
BRL	3yr	0.00	15.42	-	13.06	1,002	-	769	
	10yr	10.00	14.49	-	12.81	909	-	744	
Philippines	2yr	6.00	5.86	5.94	5.66	46	54	29	
PHP	5yr	7.88	5.94	5.93	5.68	130	129	114	
	10yr	11.38	5.94	6.00	5.89	157	163	170	
Thailand	2yr	3.13	1.99	2.01	2.11	-341	-339	-326	
THB	5yr	3.45	2.07	2.09	2.20	-257	-255	-234	
	10yr	3.63	2.28	2.30	2.43	-209	-207	-176	
India	2yr	7.59	6.69	6.68	-	129	128	-	
INR	5yr	7.28	6.69	6.69	6.79	205	205	225	
	10yr	8.83	6.76	6.74	6.85	239	237	266	
Malaysia	3yr	3.17	3.48	3.48	3.54	-149	-149	-131	
MYR	5yr	3.26	3.64	3.60	3.68	-101	-104	-87	
	10yr	4.18	3.83	3.82	3.93	-54	-55	-26	

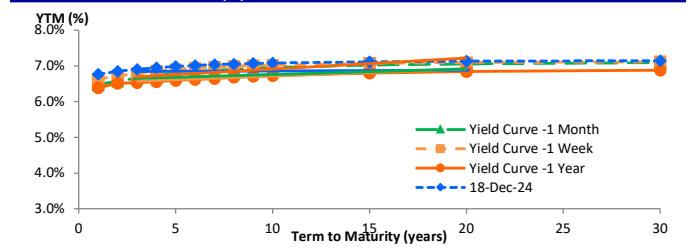
Sources: Bloomberg (Current Yield Curve), US Treasury

**YIELD OF GOVERNMENT BOND BENCHMARK (%)**



Source: DJPPR

**YIELD CURVE MOVEMENT (%)**



Source: Bloomberg

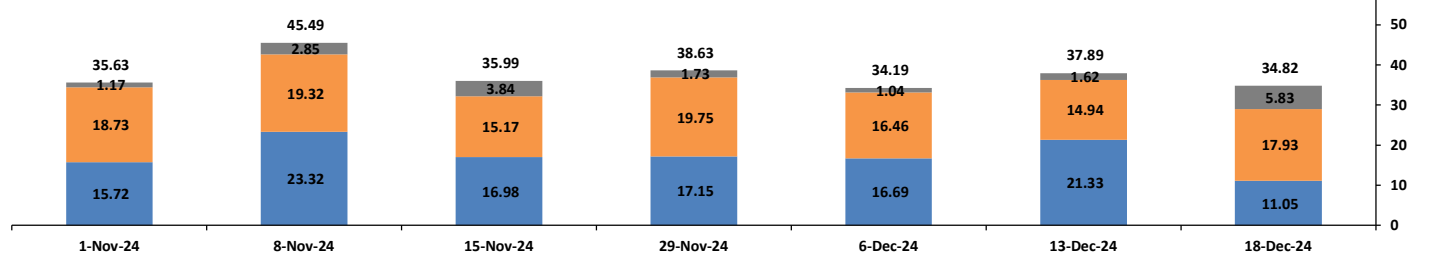
**TRADING VOLUME BY MATURITY (IDR TRILLION)**

Govt Bonds : IDR34,820 bn

■ Govt Bonds > 15 yrs : IDR5,833 bn

■ Govt Bonds 5 - 15 yrs : IDR17,932 bn

■ Govt Bonds < 5 yrs : IDR11,055 bn



Sources: Indonesia Stock Exchange

**CURRENCY**

Price	18-Dec-24	-1 Day	-1 Week	-1 Month	EoP2023	
DXY	106.98	↑	106.96	106.71	106.28	101.33
USD : IDR	16,090	↑	16,065	15,915	15,850	15,397
EUR : USD	1.05	↑	1.05	1.05	1.06	1.10
JPY : USD	153.71	↑	153.46	152.45	154.66	141.04
USD : CNY	7.287	↑	7.284	7.263	7.232	7.100
USD : SGD	4.469	↑	4.467	4.433	4.479	4.594
SGD : IDR	11,914	↓	11,921	11,844	11,793	11,677

Source : Bloomberg

**COMMODITY**

Price	18-Dec-24	-1 Day	-1 Week	-1 Month	EoP2023	
CPO	4,678	↓	4,889	5,113	4,971	3,662
Coal	129.00	→	129.00	133.75	141.75	146.40
Gold	2,649	↓	2,647	2,718	2,612	2,063
Nickel	15,305	↓	15,341	15,637	15,486	16,435
Copper	407.40	↓	409.15	421.40	412.00	389.05
Brent	73.53	↓	74.61	74.25	74.46	77.60
Metal	2,648.72	↑	2,646.83	2,718.23	2,611.83	2,062.98

**PHEI FAIR SPREAD**

	1Y	2Y	3Y	4Y	5Y	6Y	7Y	8Y	9Y	10Y
AAA	25	28	33	40	49	58	65	71	76	79
AA+	41	47	53	61	70	79	86	93	98	102
AA	63	74	83	92	102	111	119	125	131	135
AA-	96	114	128	141	152	162	170	176	180	184
A+	138	165	184	201	215	226	234	239	242	244
A	185	219	243	264	281	293	300	305	307	308
A-	233	271	298	322	341	354	363	367	369	370
BBB+	283	321	350	376	397	411	420	426	428	430
BBB	332	370	401	428	450	466	476	482	486	488

\*interpolated, as of December 18, 2024 (bps)

	16-Dec-2024	WoW	MtD	YTD
Banks	1,138.7	9.25	3.40	(374.85)
Bank Indonesia (exclude repo)	1,520.8	(1.73)	1.40	443.29
Non-Banks:	3,368.0	14.18	19.80	319.57
Mutual Fund	188.8	(0.74)	(0.16)	11.41
Insurance & Pension Fund	1,139.7	3.63	3.73	98.31
Foreign Investor	883.1	8.66	10.61	40.48
Individual	539.6	1.72	3.72	104.55
Others	616.8	0.92	1.90	64.83
<b>Total</b>	<b>6,027.4</b>	<b>21.70</b>	<b>24.60</b>	<b>388.02</b>
Domestic Investor	3,623.6	14.77	12.59	(95.75)
Foreign Investor	883.1	8.66	10.61	40.48
Bank Indonesia (include repo)	1,476.9	1.65	7.85	113.01

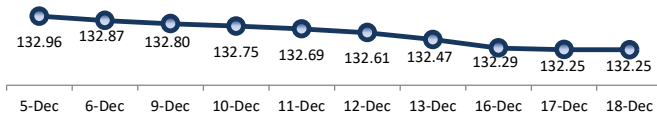
Source : DJPPR (Processed)

Sources : PHEI, Bloomberg

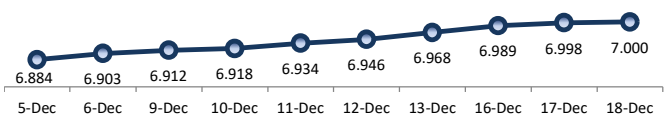
VALUATIONS OF GOVERNMENT BONDS

Bond	Issue Date	Mature Date	Coupon	TTM	Modified Duration	YTM (Change)	Prev Closing Price	Fair Yield Range	Fair Price Range	Last Trade						
										Date	Price	Vol (IDR bn)	Freq			
FR0081	1-Aug-19	15-Jun-25	6.50	0.5	0.48	6.78	↑ 0.9bps	99.86	6.635	6.910	99.80	99.93	18-Dec-24	99.84	527.28	152
FR0040	21-Sep-06	15-Sep-25	11.00	0.7	0.69	6.74	↓ -0.7bps	102.98	6.619	6.921	102.87	103.09	18-Dec-24	102.55	5.27	39
FR0084	4-May-20	15-Feb-26	7.25	1.2	1.07	6.53	↓ -0.4bps	100.78	6.397	6.860	100.41	100.93	18-Dec-24	101.47	0.14	2
FR0086	13-Aug-20	15-Apr-26	5.50	1.3	1.24	6.93	↓ -0.3bps	98.22	6.866	7.133	97.96	98.29	18-Dec-24	98.20	113.43	83
FR0037	18-May-06	15-Sep-26	12.00	1.7	1.53	6.90	↑ 0.4bps	108.18	6.716	6.983	108.06	108.52	1-Nov-24	109.64	56.30	8
FR0056	23-Sep-10	15-Sep-26	8.38	1.7	1.57	6.91	↑ 0.7bps	102.35	6.713	7.042	102.13	102.67	18-Dec-24	102.30	508.07	34
FR0090	8-Jul-21	15-Apr-27	5.13	2.3	2.13	6.92	↑ 2.9bps	96.21	6.818	7.072	95.88	96.41	18-Dec-24	94.20	28.39	30
FR0059	15-Sep-11	15-May-27	7.00	2.4	2.17	6.87	↑ 0.4bps	100.28	6.800	7.020	99.95	100.43	18-Dec-24	100.50	546.97	46
FR0042	25-Jan-07	15-Jul-27	10.25	2.6	2.17	6.91	↑ 0.8bps	107.73	6.599	7.061	107.38	108.51	16-Dec-24	108.48	0.01	1
FR0094	4-Mar-22	15-Jan-28	5.60	3.1	2.70	6.80	↑ 0.1bps	96.72	6.801	7.099	95.92	96.71	27-Aug-24	96.00	1.65	1
FR0047	30-Aug-07	15-Feb-28	10.00	3.2	2.64	6.68	↓ -0.1bps	109.30	6.597	7.042	108.23	109.55	18-Dec-24	111.54	0.15	8
FR0064	13-Aug-12	15-May-28	6.13	3.4	3.00	6.92	↑ 0.2bps	97.61	6.821	7.054	97.22	97.91	18-Dec-24	97.60	367.99	60
FR0095	19-Aug-22	15-Aug-28	6.38	3.7	3.14	6.91	↑ 1.5bps	98.27	6.850	6.966	98.11	98.47	18-Dec-24	98.30	58.65	34
FR0099	27-Jan-23	15-Jan-29	6.40	4.1	3.44	6.50	→ 0.0bps	99.65	6.443	6.728	98.84	99.84	25-Sep-23	99.77	139.50	19
FR0071	12-Sep-13	15-Mar-29	9.00	4.2	3.45	6.97	↑ 0.4bps	107.34	6.926	7.005	107.19	107.49	18-Dec-24	108.00	1.25	3
<b>FR101</b>	<b>2-Nov-23</b>	<b>15-Apr-29</b>	<b>6.88</b>	<b>4.3</b>	<b>3.64</b>	<b>6.95</b>	<b>↑ 1.0bps</b>	<b>99.73</b>	<b>6.878</b>	<b>7.022</b>	<b>99.45</b>	<b>99.97</b>	<b>18-Dec-24</b>	<b>100.15</b>	<b>231.28</b>	<b>28</b>
FR0078	27-Sep-18	15-May-29	8.25	4.4	3.66	6.74	→ 0.0bps	105.65	6.722	7.019	104.59	105.74	18-Dec-24	105.95	3.31	5
FR1014	22-Aug-24	15-Jul-30	6.50	5.6	4.47	6.95	→ 0.0bps	97.93	6.903	6.997	97.73	98.15	18-Dec-24	97.91	706.66	36
FR0052	20-Aug-09	15-Aug-30	10.50	5.7	4.23	6.95	↑ 8.6bps	116.38	6.841	7.025	115.98	116.92	18-Dec-24	119.02	0.02	3
FR0082	1-Aug-19	15-Sep-30	7.00	5.7	4.58	7.01	↑ 0.7bps	99.92	6.956	7.049	99.76	100.19	18-Dec-24	100.00	378.47	47
FR0087	13-Aug-20	15-Feb-31	6.50	6.2	4.87	7.07	↑ 1.3bps	97.17	6.986	7.080	97.13	97.59	18-Dec-24	97.25	114.43	58
FR0085	4-May-20	15-Apr-31	7.75	6.3	4.92	6.86	↓ -0.1bps	104.51	6.808	7.151	102.99	104.76	17-Dec-24	103.86	60.89	6
FR0073	6-Aug-15	15-May-31	8.75	6.4	4.90	7.03	↑ 0.3bps	108.73	7.018	7.112	108.30	108.81	18-Dec-24	109.10	48.40	15
FR0054	22-Jul-10	15-Jul-31	9.50	6.6	4.81	6.79	→ 0.0bps	114.15	6.779	7.005	112.96	114.24	18-Dec-24	112.60	120.11	6
FR0091	8-Jul-21	15-Apr-32	6.38	7.3	5.67	7.04	↑ 0.8bps	96.22	6.979	7.054	96.15	96.57	18-Dec-24	98.95	56.65	60
FR0058	21-Jul-11	15-Jun-32	8.25	7.5	5.59	7.12	↑ 0.1bps	106.48	7.013	7.135	106.38	107.11	18-Dec-24	105.85	10.10	2
FR0074	10-Nov-16	15-Aug-32	7.50	7.7	5.65	7.07	↑ 0.2bps	102.52	7.033	7.080	102.44	102.71	18-Dec-24	102.75	52.55	4
FR0096	19-Aug-22	15-Feb-33	7.00	8.2	5.99	7.04	↓ -1.5bps	99.75	7.029	7.089	99.44	99.81	18-Dec-24	99.50	168.32	94
FR0065	30-Aug-12	15-May-33	6.63	8.4	6.29	7.06	↑ 1.1bps	97.30	7.027	7.082	97.14	97.47	18-Dec-24	97.10	60.93	41
<b>FR100</b>	<b>24-Aug-23</b>	<b>15-Feb-34</b>	<b>6.63</b>	<b>9.2</b>	<b>6.59</b>	<b>7.04</b>	<b>↓ -0.6bps</b>	<b>97.24</b>	<b>6.966</b>	<b>7.049</b>	<b>97.16</b>	<b>97.71</b>	<b>18-Dec-24</b>	<b>98.50</b>	<b>632.54</b>	<b>63</b>
FR0068	1-Aug-13	15-Mar-34	8.38	9.2	6.38	7.09	↓ -1.3bps	108.60	7.078	7.149	108.17	108.67	18-Dec-24	108.54	111.83	40
FR0080	4-Jul-19	15-Jun-35	7.50	10.5	7.23	7.13	→ 0.0bps	102.74	7.110	7.176	102.36	102.85	18-Dec-24	103.50	304.65	73
FR1013	8-Aug-24	15-Jul-35	6.75	10.6	7.21	7.11	↑ 0.1bps	97.36	7.056	7.127	97.23	97.74	18-Dec-24	97.41	1,265.81	189
FR0072	9-Jul-15	15-May-36	8.25	11.4	7.45	7.14	↑ 0.9bps	108.56	7.104	7.175	108.27	108.84	18-Dec-24	108.44	397.21	32
FR0088	7-Jan-21	15-Jun-36	6.25	11.5	7.96	7.07	↑ 2.7bps	93.62	6.939	7.092	93.45	94.60	18-Dec-24	93.85	121.61	67
FR0045	24-May-07	15-May-37	9.75	12.4	7.61	7.12	↑ 1.6bps	121.45	7.084	7.143	121.21	121.76	17-Dec-24	122.80	0.01	1
FR0093	6-Jan-22	15-Jul-37	6.38	12.6	8.21	6.92	→ 0.0bps	95.50	6.892	7.036	94.54	95.69	18-Dec-24	96.35	48.56	20
FR0075	10-Aug-17	15-May-38	7.50	13.4	8.40	7.13	↑ 0.2bps	103.14	7.126	7.190	102.63	103.19	18-Dec-24	103.00	25.27	20
<b>FR0098</b>	<b>15-Sep-22</b>	<b>15-Jun-38</b>	<b>7.13</b>	<b>13.5</b>	<b>8.57</b>	<b>7.12</b>	<b>↓ -0.2bps</b>	<b>100.05</b>	<b>7.077</b>	<b>7.133</b>	<b>99.93</b>	<b>100.41</b>	<b>18-Dec-24</b>	<b>100.19</b>	<b>697.15</b>	<b>147</b>
FR0050	24-Jan-08	15-Jul-38	10.50	13.6	7.71	7.10	↑ 0.2bps	129.33	7.026	7.185	128.43	130.07	5-Dec-24	129.28	6.40	2
FR0079	7-Jan-19	15-Apr-39	8.38	14.3	8.49	7.14	↑ 0.4bps	110.93	7.121	7.160	110.76	111.13	18-Dec-24	111.50	36.00	9
FR0083	7-Nov-19	15-Apr-40	7.50	15.3	9.04	7.09	↓ -0.7bps	103.81	7.086	7.167	103.05	103.82	18-Dec-24	103.70	217.47	38
FR0057	21-Apr-11	15-May-41	9.50	16.4	8.98	7.15	↓ -0.3bps	122.49	7.140	7.194	121.99	122.59	6-Dec-24	124.00	1.00	1
FR0062	9-Feb-12	15-Apr-42	6.38	17.3	10.07	6.91	↓ -20.1bps	94.64	6.862	7.231	91.61	95.10	18-Dec-24	93.70	5.58	10
FR0092	8-Jul-21	15-Jun-42	7.13	17.5	9.91	7.11	↓ -0.3bps	100.18	7.099	7.170	99.55	100.26	18-Dec-24	101.05	97.04	44
<b>FR0097</b>	<b>19-Aug-22</b>	<b>15-Jun-43</b>	<b>7.13</b>	<b>18.5</b>	<b>10.18</b>	<b>7.13</b>	<b>↑ 0.4bps</b>	<b>99.92</b>	<b>7.089</b>	<b>7.171</b>	<b>99.53</b>	<b>100.36</b>	<b>18-Dec-24</b>	<b>101.00</b>	<b>238.98</b>	<b>155</b>
FR0067	18-Jul-13	15-Feb-44	8.75	19.2	9.75	7.03	↓ -0.5bps	118.00	7.047	7.233	115.58	117.74	17-Dec-24	116.76	30.00	2
FR0076	22-Sep-17	15-May-48	7.38	23.4	11.15	7.15	↑ 0.3bps	102.58	7.116	7.159	102.42	102.92	18-Dec-24	102.59	133.57	157
FR0089	7-Jan-21	15-Aug-51	6.88	26.7	11.69	7.10	↓ -1.1bps	97.33	7.089	7.140	96.85	97.44	18-Dec-24	98.40	62.45	60
FR1012	5-Jan-24	15-Jul-54	6.88	29.6	12.02	7.09	↓ -0.2bps	97.40	7.060	7.116	97.03	97.71	18-Dec-24	98.50	75.19	142
ORI021	23-Feb-22	15-Feb-25	4.90	0.2	-	6.33	↑ 24.1bps	99.78	6.343	6.805	99.70	99.77	18-Dec-24	99.69	56.74	54
ORI022	26-Oct-22	15-Oct-25	5.95	0.8	-	6.21	→ 0.0bps	99.79	6.458	6.920	99.22	99.59	18-Dec-24	98.85	10.75	39
<b>PBS017</b>	<b>11-Jan-18</b>	<b>15-Oct-25</b>	<b>6.13</b>	<b>0.8</b>	<b>0.78</b>	<b>6.43</b>	<b>↑ 4.5bps</b>	<b>99.75</b>	<b>6.281</b>	<b>6.690</b>	<b>99.54</b>	<b>99.87</b>	<b>17-Dec-24</b>	<b>100.07</b>	<b>1.00</b>	<b>2</b>
<b>PBS032</b>	<b>29-Jul-21</b>	<b>15-Jul-26</b>	<b>4.88</b>	<b>1.6</b>	<b>1.45</b>	<b>6.97</b>	<b>↑ 0.0bps</b>	<b>96.92</b>	<b>6.910</b>	<b>7.223</b>	<b>96.56</b>	<b>97.00</b>	<b>18-Dec-24</b>	<b>96.20</b>	<b>361.71</b>	<b>429</b>
PBS021	5-Dec-18	15-Nov-26	6.63	1.9	1.76	6.66	↑ 29.2bps	103.22	6.288	6.744	99.78	100.59	4-Dec-24	104.50	0.01	1
PBS003	2-Feb-12	15-Jan-27	6.00	2.1	1.87	6.39	↓ -31.9bps	99.25	6.400	6.863	98.35	99.23	18-Dec-24	99.15	14.98	22
PBS020	22-Oct-18	15-Oct-27	9.00	2.8	2.45	6.67	↑ 25.5bps	105.87	6.387	6.789	105.58	106.64	31-Jul-24	108.25	0.50	1
PBS018	4-Jun-18	15-May-28	7.63	3.4	2.95	6.69	↑ 24.1bps	102.79	6.427	6.812	102.43	103.61	3-Sep-19	99.29	2,000.00	2
<b>PBS030</b>	<b>4-Jun-21</b>	<b>15-Jul-28</b>	<b>5.88</b>	<b>3.6</b>	<b>3.09</b>	<b>6.80</b>	<b>↓ -0.1bps</b>	<b>97.12</b>	<b>6.737</b>	<b>7.017</b>	<b>96.44</b>	<b>97.30</b>	<b>18-Dec-24</b>	<b>98.75</b>	<b>4.73</b>	<b>6</b>
PBSG001	22-Sep-22	15-Sep-29	6.63	4.7	3.94	6.76	↑ 21.5bps	99.45	6.501	6.927	98.78	100.48	16-Dec-24	100.20	126.61	6
IFR0006	1-Apr-10	15-Mar-30	10.25	5.2	4.04	6.71	↑ 16.3bps	115.39	6.516	6.840	114.79	116.33	10-Dec-24	116.00	40.00	4
PBS023	15-May-19	15-May-30	8.13	5.4	4.34	6.70	↑ 15.5bps	106.35	6.520	6.848	105.68	107.21	14-Nov-24	107.10	2.00	2
PBS012	28-Jan-16	15-Nov-31	8.88	6.9	5.21	6.58	↓ -1.1bps	112.55	6.581	6.757	111.53	112.56	10-Dec-24	112.50	4.00	2
PBS024	28-May-19	15-May-32	8.38	7.4	5.53	6.69	↑ 6.8bps	109.74	6.589	6.850	108.73	110.33	20-Dec-22	94.07	15.00	22
PBS025	29-May-19	15-May-33	8.38	8.4	6.06	6.87	↑ 15.9bps	109.48	6.648	6.928	109.10	110.98	20-Sep-24	112.50	1.60	1
PBS029	14-Jan-21	15-Mar-34	6.38	9.2	6.75	6.70	→ 0.0bps	97.78	6.685	6.842	96.83	97.88	18-Dec-24	98.00	191.20	12
PBS022	24-Jan-19	15-Apr-34	8.63	9.3	6.47	6.69										

PRICE INDEX



YIELD INDEX



TECHNICAL ANALYSIS

FR0101

INDICATORS	18-Dec-24	-1 Day	Change
Last Price	99.73	99.76	(0.04)
DI+	38.66	37.33	1.32
DI-	52.16	53.09	(0.93)
ADX (15D)	19.71	22.60	(2.90)
A/D	-13,962.52	-13,802.86	(159.66)
CMF(20D)	-0.663	-0.660	(0.00)
CCI	-120.27	-119.65	(0.63)
Volume (IDR bn)	231.28	3,554.28	(3,323.00)
Frequency	28	52	(24)

COMMENT

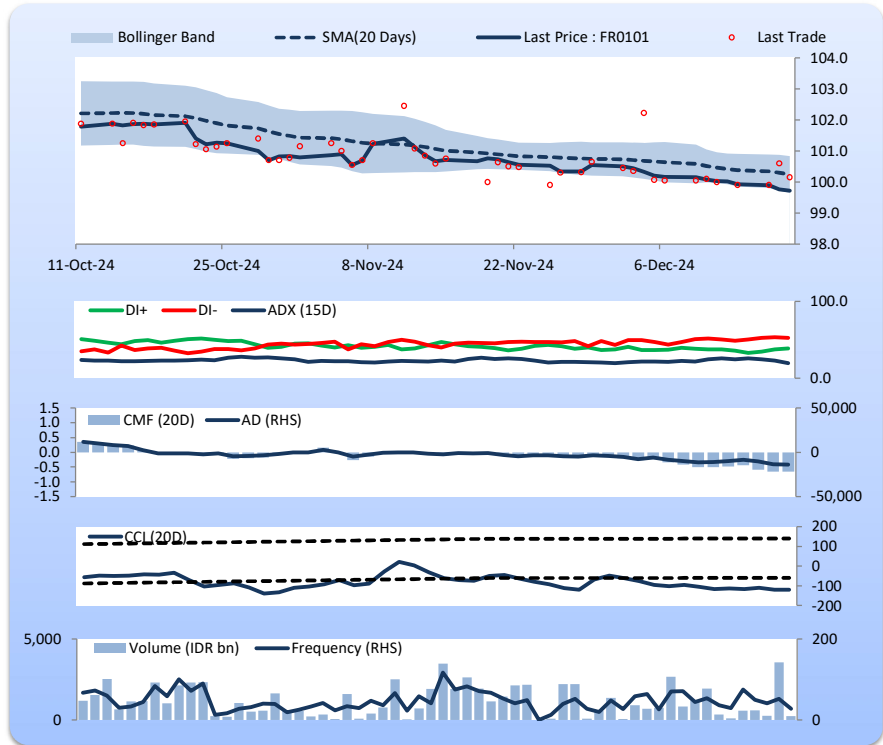
Price declined slightly; moderate trade volume; upward trend continues to weaken; selling pressure increased; CCI declined.

SELL

FEATURES

Issue Date	2-Nov-23
Mature Date	15-Apr-29
Tenor	4.3
Coupon Rate	6.88
Last Yield	6.95
Modified Duration	3.64
Previous Coupon Date	15-Oct-24
Next Coupon Date	15-Apr-25

Sources: Bloomberg (Price); IDX



FR0100

INDICATORS	18-Dec-24	-1 Day	Change
Last Price	97.24	97.20	0.04
DI+	18.51	18.75	(0.24)
DI-	55.27	56.64	(1.37)
ADX (15D)	29.19	27.72	1.47
A/D	-7,808.19	-8,389.92	581.73
CMF(20D)	-0.380	-0.412	0.03
CCI	-133.89	-162.37	28.48
Volume (IDR bn)	632.54	1,570.08	(937.54)
Frequency	63	112	(49)

COMMENT

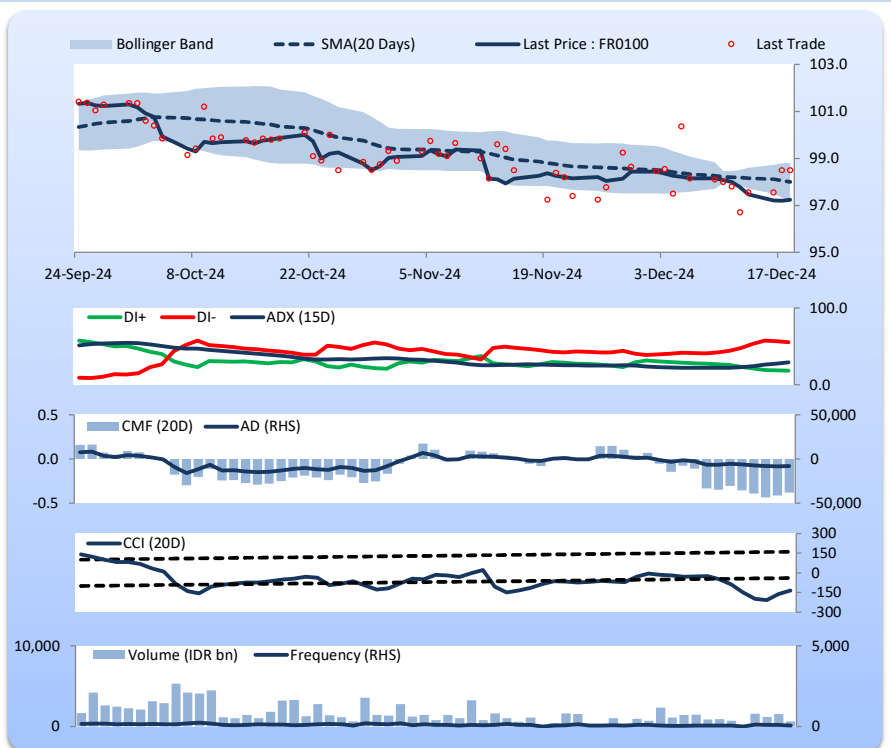
Price increased slightly; moderate trade volume; upward trend continues to strengthen; selling pressure eased; CCI increased.

HOLD

FEATURES

Issue Date	24-Aug-23
Mature Date	15-Feb-34
Tenor	9.2
Coupon Rate	6.63
Last Yield	7.04
Modified Duration	6.59
Previous Coupon Date	15-Aug-24
Next Coupon Date	15-Feb-25

Sources: Bloomberg (Price); IDX



FR0097

INDICATORS	18-Dec-24	-1 Day	Change
Last Price	99.92	99.97	(0.05)
DI+	28.01	21.43	6.58
DI-	51.08	48.64	2.44
ADX (15D)	22.86	31.13	(8.27)
A/D	2,529.06	2,761.06	(232.01)
CMF(20D)	0.179	0.195	(0.02)
CCI	-123.66	-118.01	(5.64)
Volume (IDR bn)	238.98	295.18	(56.20)
Frequency	155	200	(45)

COMMENT

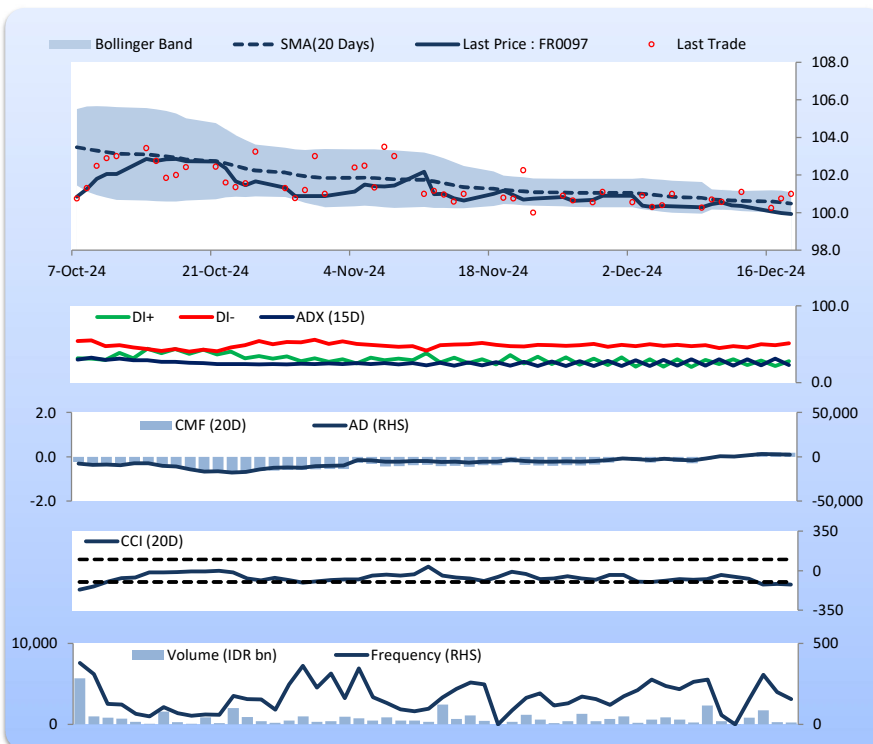
Price declined slightly; moderate trade volume; upward trend continues to weaken; buying pressure eased; CCI declined.

SELL

FEATURES

Issue Date	19-Aug-22
Mature Date	15-Jun-43
Tenor	18.5
Coupon Rate	7.13
Last Yield	7.13
Modified Duration	10.18
Previous Coupon Date	15-Dec-24
Next Coupon Date	15-Jun-25

Sources: Bloomberg (Price); IDX



FR0098

INDICATORS	18-Dec-24	-1 Day	Change
Last Price	100.05	100.03	0.02
DI+	18.09	18.50	(0.42)
DI-	50.07	49.62	0.45
ADX (15D)	32.32	31.28	1.04
A/D	-7,417.54	-8,418.89	1,001.35
CMF(20D)	-0.451	-0.503	0.05
CCI	-133.41	-144.44	11.03
Volume (IDR bn)	697.15	918.50	(221.35)
Frequency	147	174	(27)

COMMENT

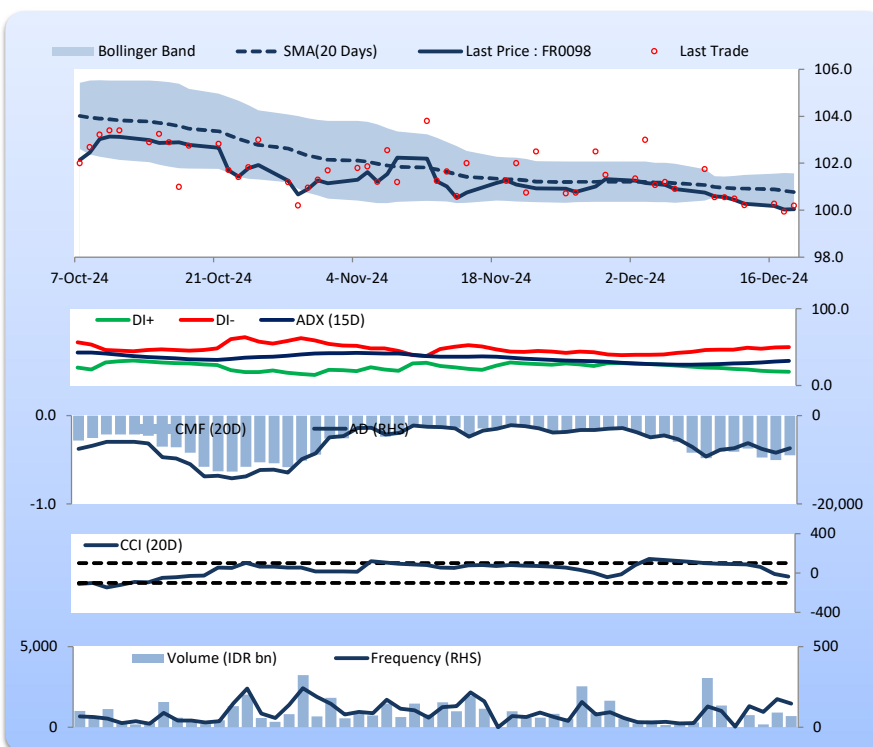
Price increased slightly; moderate trade volume; downward trend continues to strengthen; selling pressure eased; CCI increased.

HOLD

FEATURES

Issue Date	15-Sep-22
Mature Date	15-Jun-38
Tenor (year)	13.5
Coupon Rate	7.13
Last Yield	7.12
Modified Duration	8.57
Previous Coupon Date	15-Dec-24
Next Coupon Date	15-Jun-25

Sources: Bloomberg (Price); IDX



Analysts: Laras Nerpatari & Eka Nuraini

**DISCLAIMER:** The information contained in this report has been taken from sources which we deem reliable. However, none of P.T. BRI Danareksa Sekuritas and/or its affiliated companies and/or their respective employees and/or agents makes any representation or warranty (express or implied) or accepts any responsibility or liability as to, or in relation to, the accuracy or completeness of the information and opinions contained in this report or as to any information contained in this report or any other such information or opinions remaining unchanged after the issue thereof. We expressly disclaim any responsibility or liability (express or implied) of P.T. BRI Danareksa Sekuritas, its affiliated companies and their respective employees and agents whatsoever and howsoever arising (including, without limitation for any claims, proceedings, action, suits, losses, expenses, damages or costs) which may be brought against or suffered by any person as a result of acting in reliance upon the whole or any part of the contents of this report and neither P.T. BRI Danareksa Sekuritas, its affiliated companies or their respective employees or agents accepts liability for any errors, omissions or mis-statements, negligent or otherwise, in the report and any liability in respect of the report or any inaccuracy therein or omission therefrom which might otherwise arise is hereby expressly disclaimed. The information contained in this report is not to be taken as any recommendation made by P.T. BRI Danareksa Sekuritas or any other person to enter into any agreement with regard to any investment mentioned in this document. This report is prepared for general circulation. It does not have regards to the specific person who may receive this report. In considering any investments you should make your own independent assessment and seek your own professional financial and legal advice.