

MOST ACTIVE GOVERNMENT BONDS

Bond	Coupon	Maturity	Last Price	Yield	Volume (IDR bn)
FR0100	6.625	15-Feb-34	100.10	6.625	3,982.59
FR0103	6.750	15-Jul-35	101.09	6.614	3,160.33
FR0101	6.875	15-Apr-29	101.40	6.512	2,043.29
FR0081	6.500	15-Jun-25	100.05	6.446	1,607.29
FR0096	7.000	15-Feb-33	102.36	6.635	1,148.29
FR0087	6.500	15-Feb-31	99.61	6.603	1,094.27
FR0104	6.500	15-Jul-30	100.25	6.449	594.63
FR0098	7.125	15-Jun-38	103.80	6.699	554.91
FR0075	7.500	15-May-38	106.50	6.790	497.29
FR0082	7.000	15-Sep-30	105.40	6.561	369.20

Coupon, Last Price & Yield are in %; Volume is in IDR bn; Rating code: id(Pefindo) & idn (Fitch Indonesia)
Sources: Bloomberg; Indonesia Stock Exchange (Volume)

MOST ACTIVE CORPORATE BONDS

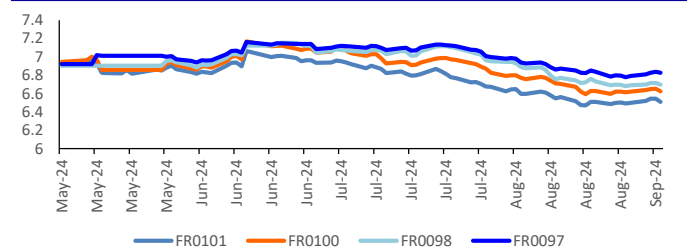
Bond	Rating	Coupon	Maturity	Last Price	Yield	Volume
CASI01XXMF	irA	8.000	17-Feb-25	100.02	8.00	420.00
SWIATA01BCN1	idA-(sy)	11.250	6-Oct-26	100.00	11.25	112.20
SMARMA01	irA-	2.438	24-Nov-25	104.97	-1.59	106.00
DART03CN1	idBBB+	10.850	18-Jul-25	102.85	10.55	70.00
LPPI01BCN3	idA	10.250	1-Sep-25	103.66	9.89	66.00
MDKA03BCN3	idA	8.250	1-Sep-25	101.50	8.13	54.10
BBRI02DCN2	idAAA	8.800	11-Apr-27	104.55	6.87	50.00
PTHK01BCN3	idAAA(gg)	8.400	26-Sep-27	102.32	7.54	50.00
BAFI02CN4	idAA-	6.500	8-Sep-26	99.07	7.00	40.00
IMFI04CCN2	idA	7.500	19-Nov-26	100.40	7.30	30.00

SOVEREIGN BOND YIELDS

Country	Tenor	Coupon (%)	MA LTM as		Spread over UST YC (bps)		
			5-Sep-24 of Aug	MA LTM as of Jul	5-Sep-24	Aug	Jul
United States	2yr		4.97	4.97			
USD	5yr		4.64	4.64			
	10yr		4.37	4.37			
German	2yr	0.25	2.31	2.39	-309	-301	-284
EUR	5yr	1.00	2.11	2.19	-253	-245	-231
	10yr	1.75	2.22	2.30	-215	-207	-189
Indonesia	2yr	4.13	4.86	4.86	-55	-54	7
USD	5yr	3.50	4.37	4.42	-27	-22	48
	10yr	3.85	4.54	4.54	17	17	78
Brazil	2yr	0.00	11.81	11.92	641	652	643
BRL	3yr	0.00	11.87	12.08	647	668	659
	10yr	10.00	12.01	12.24	661	684	652
Philippines	2yr	6.00	6.03	6.02	63	62	64
PHP	5yr	7.88	6.08	6.09	144	145	170
	10yr	11.38	6.18	6.13	181	176	197
Thailand	2yr	3.13	2.17	2.20	-323	-320	-304
THB	5yr	3.45	2.30	2.29	-234	-235	-216
	10yr	3.63	2.56	2.56	-181	-181	-159
India	2yr	7.59	6.76	-	136	-	-
INR	5yr	7.28	6.76	6.78	212	214	231
	10yr	8.83	6.86	6.87	249	250	274
Malaysia	3yr	3.17	3.36	3.35	-161	-162	-147
MYR	5yr	3.26	3.51	3.52	-113	-113	-99
	10yr	4.18	3.76	3.77	-62	-60	-46

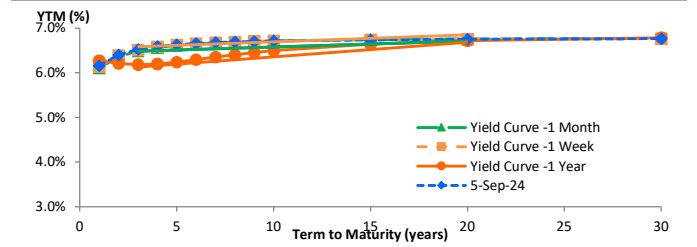
Sources: Bloomberg (Current Yield Curve), US Treasury

YIELD OF GOVERNMENT BOND BENCHMARK (%)



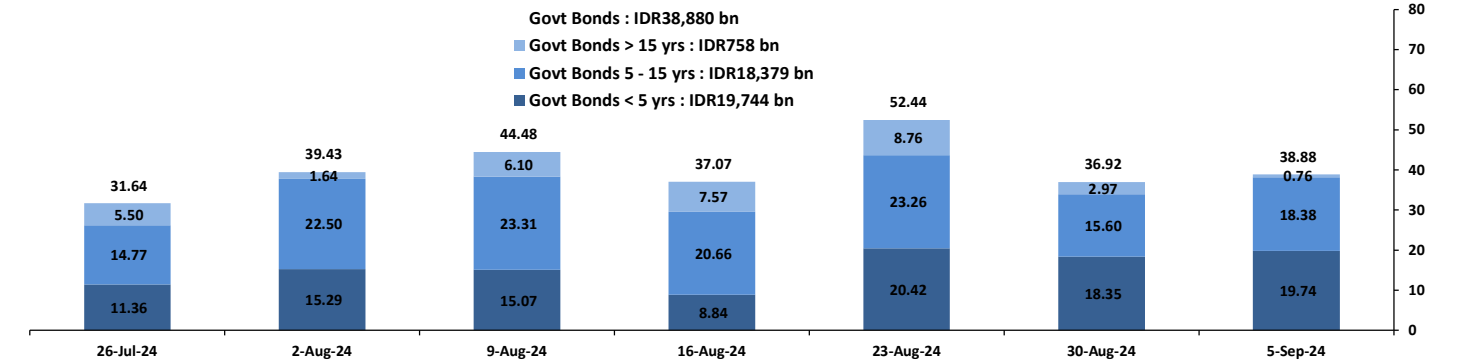
Source: DJPPR

YIELD CURVE MOVEMENT (%)



Source: Bloomberg

TRADING VOLUME BY MATURITY (IDR TRILLION)



Sources: Indonesia Stock Exchange

CURRENCY

Price	5-Sep-24	-1 Day	-1 Week	-1 Month	EoP2023
DXY	101.15	↓	101.36	101.34	102.69
USD : IDR	15,398	↓	15,475	15,415	16,185
EUR : USD	1.11	↑	1.11	1.11	1.10
JPY : USD	143.45	↑	143.74	144.99	144.18
USD : CNY	7.099	↓	7.113	7.097	7.140
USD : SGD	4.339	↓	4.353	4.311	4.427
SGD : IDR	11,838	↓	11,850	11,844	12,250

Source: Bloomberg

COMMODITY

Price	5-Sep-24	-1 Day	-1 Week	-1 Month	EoP2023
CPO	4,025	↑	3,992	4,047	3,930
Coal	139.50	→	139.50	145.00	143.70
Gold	2,517	↑	2,496	2,521	2,411
Nickel	16,000	→	16,000	16,827	16,063
Copper	398.20	↓	401.95	414.75	399.90
Brent	75.09	↓	75.78	82.43	76.85
Metal	2,516.50	↑	2,495.72	2,521.40	2,410.79

PHEI FAIR SPREAD

	1Y	2Y	3Y	4Y	5Y	6Y	7Y	8Y	9Y	10Y
AAA	50	53	56	61	67	72	77	81	84	87
AA+	74	81	86	92	100	107	114	120	124	128
AA	101	115	122	130	138	147	155	161	167	171
AA-	134	157	168	178	187	196	204	210	215	218
A+	174	207	222	234	245	254	262	267	271	274
A	220	260	281	296	309	320	328	334	338	340
A-	271	316	341	360	377	392	403	411	416	420
BBB+	327	372	401	426	449	468	483	495	503	509
BBB	385	428	462	493	521	546	566	583	595	604

*interpolated, as of September 05, 2024 (bps)

	04-Sep-2024	WoW	MtD	YTD
Banks	1,129.8	19.46	0.72	(383.78)
Bank Indonesia (exclude repo)	1,493.8	(15.74)	(0.51)	416.35
Non-Banks:	3,257.5	3.63	(0.86)	209.09
Mutual Fund	186.0	1.16	0.29	8.64
Insurance & Pension Fund	1,111.5	1.70	0.44	70.11
Foreign Investor	850.4	(0.81)	(1.93)	7.74
Individual	508.2	(0.16)	0.14	73.13
Others	601.4	1.74	0.21	49.48
Total	5,881.1	7.35	(0.65)	241.66
Domestic Investor	3,536.9	23.91	1.80	(182.43)
Foreign Investor	850.4	(0.81)	(1.93)	7.74
Bank Indonesia (include repo)	1,417.8	1.95	1.08	53.86

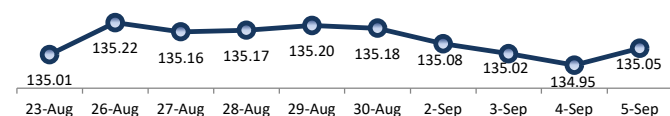
Source: DJPPR (Processed)

Sources: PHEI, Bloomberg

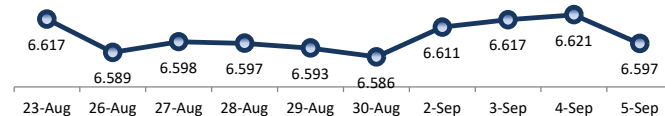
VALUATIONS OF GOVERNMENT BONDS

Bond	Issue Date	Mature Date	Coupon	TTM	Modified Duration	YTM (Change)	Prev Closing Price	Fair Yield Range	Fair Price Range	Last Trade						
										Date	Price	Vol (IDR bn)	Freq			
FR0044	19-Apr-07	15-Sep-24	10.00	0.0	-	-0.35	↓ -442.4bp	100.17	5.043	5.165	100.12	100.13	5-Sep-24	100.33	0.01	2
FR0081	1-Aug-19	15-Jun-25	6.50	0.8	0.74	6.45	↓ -1.0bps	100.03	6.341	6.462	100.02	100.11	5-Sep-24	100.05	1,607.29	122
FR0040	21-Sep-06	15-Sep-25	11.00	1.0	0.92	6.40	↓ -2.9bps	104.46	6.271	6.393	104.51	104.63	5-Sep-24	106.55	0.62	48
FR0084	4-May-20	15-Feb-26	7.25	1.4	1.35	6.45	↑ 1.2bps	101.08	6.344	6.465	101.06	101.23	5-Sep-24	100.85	0.01	2
FR0086	13-Aug-20	15-Apr-26	5.50	1.6	1.48	6.45	↑ 1.0bps	98.57	6.350	6.472	98.53	98.71	5-Sep-24	98.63	107.69	35
FR0037	18-May-06	15-Sep-26	12.00	2.0	1.72	6.52	↓ -1.9bps	110.21	6.328	6.450	110.39	110.63	20-Aug-24	110.53	44.00	3
FR0056	23-Sep-10	15-Sep-26	8.38	2.0	1.78	6.40	↓ -2.2bps	103.68	6.372	6.449	103.60	103.75	5-Sep-24	104.61	113.34	19
FR0090	8-Jul-21	15-Apr-27	5.13	2.6	2.35	6.40	↑ 1.6bps	96.98	6.358	6.480	96.79	97.07	5-Sep-24	100.50	46.37	16
FR0059	15-Sep-11	15-May-27	7.00	2.7	2.38	6.43	↓ -0.9bps	101.38	6.338	6.434	101.37	101.60	5-Sep-24	101.45	105.41	17
FR0042	25-Jan-07	15-Jul-27	10.25	2.9	2.46	6.39	↓ -3.3bps	109.90	6.414	6.536	109.53	109.86	5-Sep-24	111.02	0.08	6
FR0094	4-Mar-22	15-Jan-28	5.60	3.4	2.98	6.72	↑ 3.9bps	96.70	6.578	6.700	96.73	97.09	27-Aug-24	96.00	1.65	1
FR0047	30-Aug-07	15-Feb-28	10.00	3.4	2.91	6.46	↑ 3.2bps	110.75	6.412	6.534	110.53	110.92	5-Sep-24	110.80	5.01	2
FR0064	13-Aug-12	15-May-28	6.13	3.7	3.19	6.46	↓ -1.3bps	98.92	6.382	6.504	98.76	99.15	5-Sep-24	99.75	24.30	23
FR0095	19-Aug-22	15-Aug-28	6.38	3.9	3.43	6.39	↓ -0.9bps	99.95	6.310	6.431	99.80	100.22	5-Sep-24	99.90	25.11	10
FR0099	27-Jan-23	15-Jan-29	6.40	4.4	3.72	6.53	↓ -0.1bps	99.49	6.493	6.615	99.19	99.64	25-Sep-23	99.77	139.50	19
FR0071	12-Sep-13	15-Mar-29	9.00	4.5	3.59	6.54	↓ -2.0bps	109.47	6.469	6.587	109.31	109.79	5-Sep-24	108.60	0.66	5
FR101	2-Nov-23	15-Feb-34	6.63	9.4	6.93	6.51	↓ -3.3bps	101.41	6.426	6.548	100.53	101.39	5-Sep-24	101.40	2,043.29	69
FR0078	27-Sep-18	15-May-29	8.25	4.7	3.80	6.55	↓ -2.6bps	106.76	6.485	6.604	106.54	107.03	5-Sep-24	106.77	143.84	14
FR0052	20-Aug-09	15-Aug-30	10.50	5.9	4.52	6.69	↓ -0.8bps	118.41	6.602	6.724	118.24	118.90	5-Sep-24	120.69	0.01	3
FR0082	1-Aug-19	15-Sep-30	7.00	6.0	4.72	6.56	↓ -2.8bps	102.15	6.496	6.617	101.87	102.48	5-Sep-24	105.40	369.20	23
FR0087	13-Aug-20	15-Feb-31	6.50	6.4	5.17	6.60	↓ -1.7bps	99.46	6.516	6.637	99.28	99.91	5-Sep-24	99.61	1,094.27	76
FR0085	4-May-20	15-Apr-31	7.75	6.6	5.02	6.72	↑ 0.2bps	105.42	6.655	6.777	105.10	105.77	2-Sep-24	105.75	2.64	2
FR0073	6-Aug-15	15-May-31	8.75	6.7	5.01	6.62	↓ -4.0bps	111.32	6.604	6.724	110.76	111.44	5-Sep-24	111.90	100.76	9
FR0054	22-Jul-10	15-Jul-31	9.50	6.9	5.09	6.67	↓ -1.0bps	115.36	6.644	6.766	114.79	115.51	5-Sep-24	114.50	0.01	1
FR0091	8-Jul-21	15-Apr-32	6.38	7.6	5.79	6.63	↓ -2.8bps	98.46	6.552	6.674	98.23	98.94	5-Sep-24	97.25	182.99	104
FR0058	21-Jul-11	15-Jun-32	8.25	7.8	5.70	6.68	↓ -2.1bps	109.35	6.640	6.761	108.88	109.64	5-Sep-24	109.45	284.72	10
FR0074	10-Nov-16	15-Aug-32	7.50	7.9	5.95	6.69	↓ -2.7bps	104.94	6.624	6.746	104.57	105.33	5-Sep-24	106.50	125.94	13
FR0096	19-Aug-22	15-Feb-33	7.00	8.4	6.31	6.64	↓ -3.1bps	102.32	6.566	6.687	101.99	102.78	5-Sep-24	102.36	1,148.29	48
FR0065	30-Aug-12	15-May-33	6.63	8.7	6.40	6.65	↓ -1.9bps	99.85	6.586	6.686	99.59	100.24	5-Sep-24	99.95	161.06	33
FR100	25-Aug-23	15-Feb-34	6.63	9.4	6.91	6.63	↓ -2.8bps	100.00	6.570	6.669	99.69	100.38	5-Sep-24	100.10	3,982.59	186
FR0068	1-Aug-13	15-Mar-34	8.38	9.5	6.47	6.66	↓ -2.1bps	111.91	6.602	6.696	111.69	112.39	5-Sep-24	112.10	300.26	14
FR0080	4-Jul-19	15-Jun-35	7.50	10.8	7.31	6.72	↓ -0.7bps	105.86	6.627	6.720	105.90	106.63	5-Sep-24	106.08	131.65	19
FR103	8-Aug-24	15-Jul-35	6.75	10.9	7.56	6.61	↓ -2.8bps	101.03	6.626	6.648	100.77	101.71	5-Sep-24	101.09	3,160.33	88
FR0072	9-Jul-15	15-May-36	8.25	11.7	7.53	6.72	↓ -1.4bps	112.24	6.687	6.736	112.10	112.53	5-Sep-24	112.40	145.44	19
FR0088	7-Jan-21	15-Jun-36	6.25	11.8	8.06	6.64	↓ -3.8bps	96.87	6.631	6.753	95.95	96.91	5-Sep-24	97.50	23.59	56
FR0045	24-May-07	15-May-37	9.75	12.7	7.67	6.74	↑ 1.2bps	125.39	6.702	6.824	124.57	125.76	30-Aug-24	123.65	0.00	1
FR0093	6-Jan-22	15-Jul-37	6.38	12.9	8.54	6.70	→ 0.0bps	97.20	6.587	6.709	97.14	98.17	5-Sep-24	97.90	141.02	63
FR0075	10-Aug-17	15-May-38	7.50	13.7	8.47	6.79	↑ 0.6bps	106.25	6.697	6.794	106.22	107.11	5-Sep-24	106.50	497.29	32
FR098	15-Sep-22	15-Jun-38	7.13	13.8	8.67	6.70	↓ -1.6bps	103.78	6.642	6.742	103.38	104.31	5-Sep-24	103.80	554.91	53
FR0050	24-Jan-08	15-Jul-38	10.50	13.9	8.01	7.01	→ 0.0bps	130.66	6.899	7.020	130.50	131.79	4-Sep-24	132.75	88.01	2
FR0079	7-Jan-19	15-Apr-39	8.38	14.6	8.54	6.82	↑ 0.2bps	114.24	6.736	6.858	113.85	115.07	5-Sep-24	114.30	77.26	7
FR0083	7-Nov-19	15-Apr-40	7.50	15.6	9.07	6.86	↑ 0.3bps	106.06	6.732	6.854	106.12	107.33	5-Sep-24	107.10	70.41	47
FR0057	21-Apr-11	15-May-41	9.50	16.7	9.02	6.87	↓ -2.3bps	125.85	6.799	6.918	125.31	126.69	1-Aug-24	124.00	0.00	1
FR0062	9-Feb-12	15-Apr-42	6.38	17.6	10.09	6.72	↓ -0.5bps	96.50	6.700	6.822	95.45	96.66	5-Sep-24	99.35	1.80	11
FR0092	8-Jul-21	15-Jun-42	7.13	17.8	9.96	6.83	↓ -0.9bps	102.96	6.750	6.868	102.60	103.84	5-Sep-24	103.50	43.61	42
FR097	19-Aug-22	15-Jun-43	7.13	18.8	10.25	6.83	↓ -1.1bps	103.11	6.728	6.850	102.87	104.18	5-Sep-24	103.35	164.88	58
FR0067	18-Jul-13	15-Feb-44	8.75	19.4	10.08	6.91	→ 0.0bps	119.53	6.892	7.013	118.27	119.73	4-Sep-24	119.79	3.30	1
FR0076	22-Sep-17	15-May-48	7.38	23.7	11.26	6.81	↓ -0.2bps	106.53	6.773	6.895	105.55	107.04	5-Sep-24	107.29	58.54	30
FR0089	7-Jan-21	15-Aug-51	6.88	26.9	12.15	6.87	↓ -0.6bps	100.11	6.779	6.901	99.68	101.18	5-Sep-24	99.50	36.09	87
FR102	3-Jan-24	15-Jul-54	6.88	29.9	12.54	6.83	↓ -0.3bps	100.56	6.756	6.878	99.95	101.50	5-Sep-24	99.65	113.85	94
ORI020	27-Oct-21	15-Oct-24	4.95	0.1	-	7.83	↓ -0.2bps	99.72	7.091	7.213	99.75	99.77	5-Sep-24	99.85	40.39	33
ORI021	23-Feb-22	15-Feb-25	4.90	0.4	-	8.02	↓ -0.2bps	98.68	7.204	7.326	98.94	99.00	5-Sep-24	98.80	15.58	36
ORI022	26-Oct-22	15-Oct-25	5.95	1.1	-	6.50	↓ -0.2bps	99.42	6.475	6.596	99.31	99.44	5-Sep-24	97.50	5.87	31
IFR0007	21-Jan-10	15-Jan-25	10.25	0.4	0.35	6.15	↓ -1.0bps	101.36	6.159	6.281	101.36	101.40	27-Jan-22	115.88	30.00	3
PBS036	25-Aug-22	15-Aug-25	5.38	0.9	0.90	6.38	↑ 0.8bps	99.10	6.342	6.463	99.02	99.12	5-Sep-24	99.13	88.17	53
PBS017	11-Jan-18	15-Oct-25	6.13	1.1	1.03	6.42	↓ -1.6bps	99.69	6.385	6.506	99.59	99.72	5-Sep-24	99.71	91.00	10
PBS032	29-Jul-21	15-Jul-26	4.88	1.9	1.73	6.60	↓ -0.6bps	97.04	6.534	6.655	96.93	97.13	5-Sep-24	99.30	126.27	253
PBS021	5-Dec-18	15-Nov-26	8.50	2.2	1.94	6.40	↓ -0.8bps	104.20	6.371	6.480	104.05	104.28	27-Aug-24	104.10	10.00	2
PBS003	2-Feb-12	15-Jan-27	6.00	2.4	2.15	6.51	↓ -8.1bps	98.89	6.546	6.668	98.55	98.81	5-Sep-24	99.62	6.14	16
PBS020	22-Oct-18	15-Oct-27	9.00	3.1	2.62	6.48	↓ -1.0bps	106.96	6.436	6.558	106.76	107.11	31-Jul-24	108.25	0.50	1
PBS018	4-Jun-18	15-May-28	7.63	3.7	3.12	6.50	↓ -0.9bps	103.61	6.451	6.573	103.39	103.79	3-Sep-19	99.29	2,000.00	2
PBS030	4-Jun-21	15-Jul-28	5.88	3.9	3.37	6.57	↓ -2.0bps	97.66	6.519	6.640	97.42	97.83	5-Sep-24	97.75	226.55	4
PBSG001	22-Sep-22	15-Sep-29	6.63	5.0	4.09	6.50	↓ -0.1bps	100.55	6.484	6.606	100.08	100.59	3-Sep-24	100.50	45.00	1
PBS023	15-May-19	15-May-30	6.63	5.7	4.59	6.55	↓ -0.8bps	107.36	6.473	6.594	100.13	100.70	20-Aug-24	105.60	0.14	2
PBS012	28-Jan-16	15-Nov-31	8.88	7.2	5.28	6.56	↓ -0.2bps	113.06	6.378	6.500	113.46	114.21	5-Sep-24	113.02	64.00	8
PBS024	28-May-19	15-May-32	8.38	7.7	5.61	6.58	↓ -0.5bps	110.68	6.484	6.606	110.52	111.30	20-Dec-22	94.07	15.00	22
PBS025	29-May-19	15-May-33	8.38	8.7	6.14	6.64	↓ -0.3bps	111.30	6.540	6.661	111.16	112.01	3-Sep-24	110.00	0	

PRICE INDEX



YIELD INDEX



TECHNICAL ANALYSIS

FR0101

INDICATORS	5-Sep-24	-1 Day	Change
Last Price	101.41	101.29	0.13
DI+	45.35	43.77	1.58
DI-	39.43	39.93	(0.50)
ADX (15D)	22.45	25.72	(3.27)
A/D	2,765.69	2,218.84	546.84
CMF(20D)	0.068	0.056	0.01
CCI	9.25	-8.49	17.74
Volume (IDR bn)	2,043.29	318.27	1,725.02
Frequency	69	46	23

COMMENT

Price increased; heavy trade volume; upward trend continues to weaken; buying pressure increased; CCI increased.

BUY

FEATURES

Issue Date	2-Nov-23
Mature Date	15-Apr-29
Tenor	4.6
Coupon Rate	6.88
Last Yield	6.51
Modified Duration	3.81
Previous Coupon Date	15-Apr-24
Next Coupon Date	15-Oct-24

Sources: Bloomberg (Price); IDX



FR0100

INDICATORS	5-Sep-24	-1 Day	Change
Last Price	100.00	99.80	0.20
DI+	44.18	44.09	0.09
DI-	21.68	23.34	(1.67)
ADX (15D)	43.24	43.89	(0.65)
A/D	25,181.22	24,216.16	965.06
CMF(20D)	0.399	0.390	0.01
CCI	33.97	22.86	11.10
Volume (IDR bn)	3,982.59	1,906.15	2,076.44
Frequency	186	116	70

COMMENT

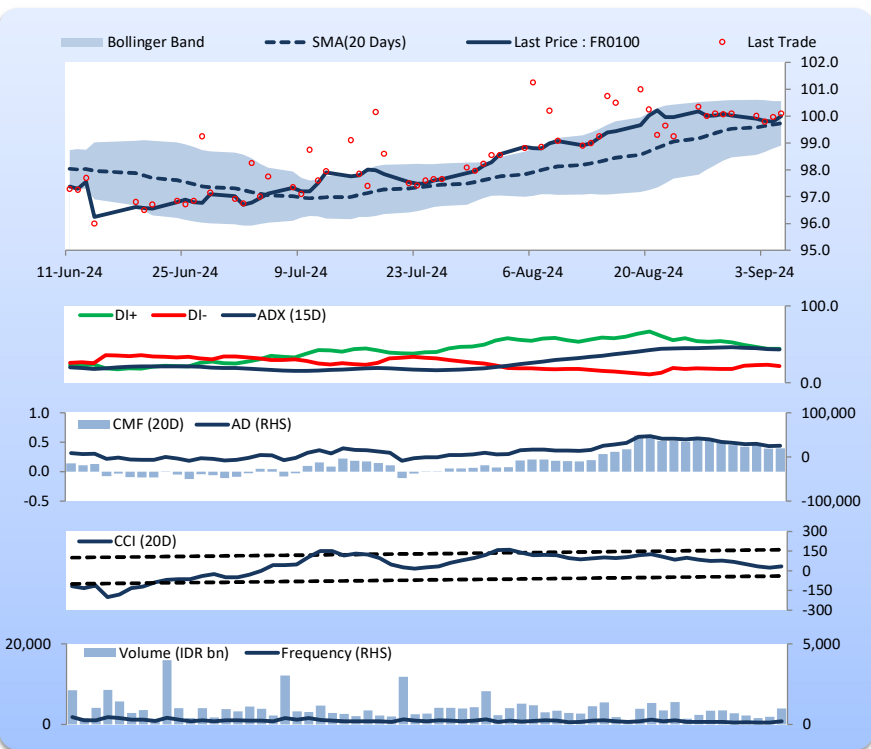
Price increased; heavy trade volume; upward trend continues to weaken; buying pressure increased; CCI increased.

BUY

FEATURES

Issue Date	24-Aug-23
Mature Date	15-Feb-34
Tenor	9.4
Coupon Rate	6.63
Last Yield	6.62
Modified Duration	6.91
Previous Coupon Date	15-Aug-24
Next Coupon Date	15-Feb-25

Sources: Bloomberg (Price); IDX



FR0097

INDICATORS	5-Sep-24	-1 Day	Change
Last Price	103.11	102.98	0.13
DI+	47.40	50.69	(3.30)
DI-	22.04	26.26	(4.22)
ADX (15D)	30.96	27.67	3.29
A/D	5,716.45	7,325.75	(1,609.30)
CMF(20D)	0.235	0.282	(0.05)
CCI	14.23	23.88	(9.65)
Volume (IDR bn)	164.88	1,641.05	(1,476.17)
Frequency	58	97	(39)

COMMENT

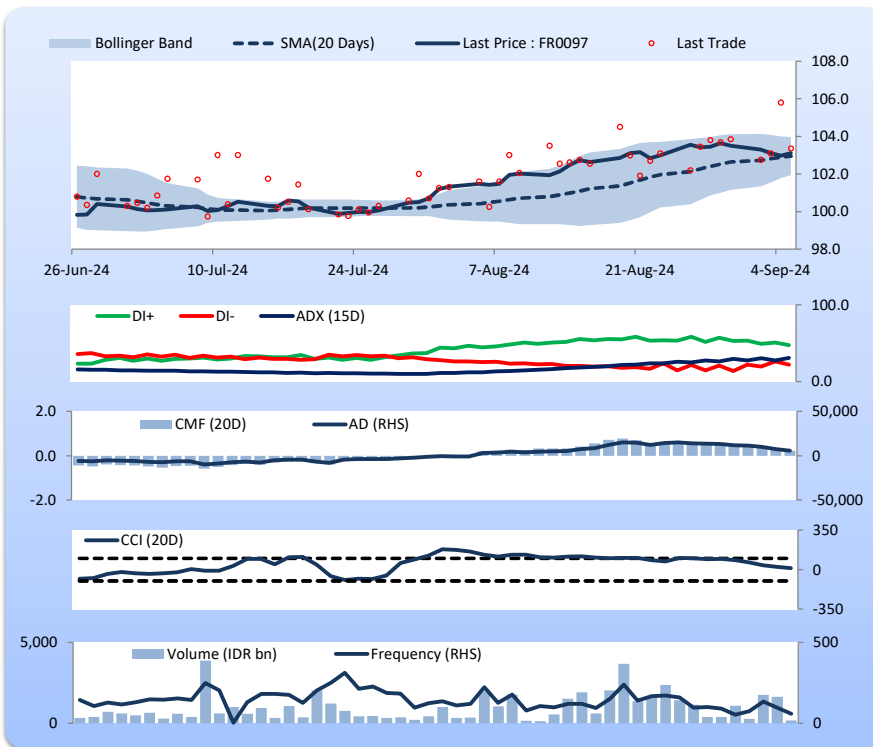
Price increased; light trade volume; upward trend continues to strengthen; buying pressure eased; CCI declined.

BUY

FEATURES

Issue Date	19-Aug-22
Mature Date	15-Jun-43
Tenor	18.8
Coupon Rate	7.13
Last Yield	6.83
Modified Duration	10.25
Previous Coupon Date	15-Jun-24
Next Coupon Date	15-Dec-24

Sources: Bloomberg (Price); IDX



FR0098

INDICATORS	5-Sep-24	-1 Day	Change
Last Price	103.78	103.63	0.15
DI+	46.65	49.19	(2.53)
DI-	18.15	18.69	(0.54)
ADX (15D)	46.30	46.47	(0.17)
A/D	7,958.92	8,764.27	(805.35)
CMF(20D)	0.372	0.395	(0.02)
CCI	44.60	44.60	(0.01)
Volume (IDR bn)	554.91	448.58	106.33
Frequency	53	56	(3)

COMMENT

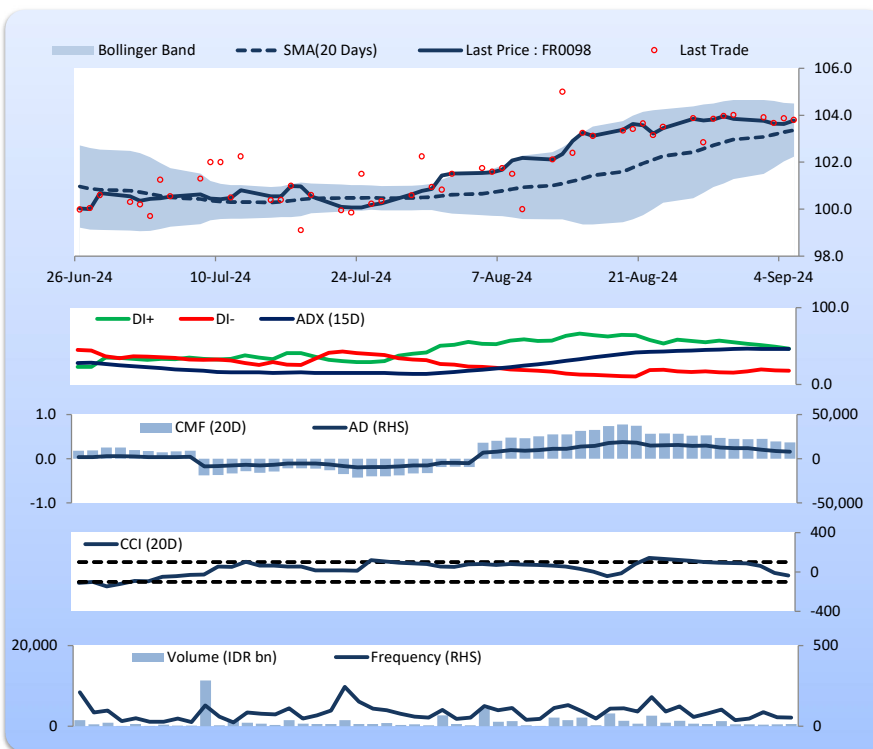
Price increased; moderate trade volume; downward trend continues to weaken; buying pressure eased; CCI declined.

BUY

FEATURES

Issue Date	15-Sep-22
Mature Date	15-Jun-38
Tenor (year)	13.8
Coupon Rate	7.13
Last Yield	6.70
Modified Duration	8.67
Previous Coupon Date	15-Jun-24
Next Coupon Date	15-Dec-24

Sources: Bloomberg (Price); IDX



Analysts: Laras Nerpatari & Eka Nuraini

DISCLAIMER: The information contained in this report has been taken from sources which we deem reliable. However, none of P.T. BRI Danareksa Sekuritas and/or its affiliated companies and/or their respective employees and/or their respective employees and/or agents makes any representation or warranty (express or implied) or accepts any responsibility or liability as to, or in relation to, the accuracy or completeness of the information and opinions contained in this report or as to any information contained in this report or any other such information or opinions remaining unchanged after the issue thereof. We expressly disclaim any responsibility or liability (express or implied) of P.T. BRI Danareksa Sekuritas, its affiliated companies and their respective employees and agents whatsoever and howsoever arising (including, without limitation for any claims, proceedings, action, suits, losses, expenses, damages or costs) which may be brought against or suffered by any person as a result of acting in reliance upon the whole or any part of the contents of this report and neither P.T. BRI Danareksa Sekuritas, its affiliated companies or their respective employees or agents accepts liability for any errors, omissions or mis-statements, negligent or otherwise, in the report and any liability in respect of the report or any inaccuracy therein or omission therefrom which might otherwise arise is hereby expressly disclaimed. The information contained in this report is not to be taken as any recommendation made by P.T. BRI Danareksa Sekuritas or any other person to enter into any agreement with regard to any investment mentioned in this document. This report is prepared for general circulation. It does not have regards to the specific person who may receive this report. In considering any investments you should make your own independent assessment and seek your own professional financial and legal advice.