

MOST ACTIVE GOVERNMENT BONDS

Bond	Coupon	Maturity	Last Price	Yield	Volume (IDR bn)
FR0100	6.625	15-Feb-34	99.08	6.760	3,374.17
FR0101	6.875	15-Apr-29	101.75	6.594	2,412.73
PBS032	4.875	15-Jul-26	98.10	6.670	1,815.20
FR0103	6.750	15-Jul-35	100.50	6.692	1,697.24
FR0081	6.500	15-Jun-25	100.43	6.480	1,319.92
FR0068	8.375	15-Mar-34	110.88	6.798	914.98
FR0082	7.000	15-Sep-30	101.40	6.695	654.61
FR0096	7.000	15-Feb-33	101.50	6.767	528.40
FR0080	7.500	15-Jun-35	105.42	6.808	452.97
FR0102	6.875	15-Jul-54	98.85	6.972	452.27

Coupon, Last Price & Yield are in %; Volume is in IDR bn; Rating code: id(Pefindo) & idn (Fitch Indonesia)
Sources: Bloomberg; Indonesia Stock Exchange (Volume)

MOST ACTIVE CORPORATE BONDS

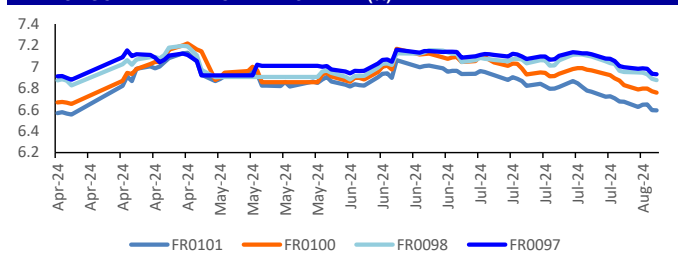
Bond	Rating	Coupon	Maturity	Last Price	Yield	Volume
KAI01BCN2	idAAA	7.200	9-Aug-29	100.00	7.20	117.50
WISL01B	idA	7.750	5-Aug-25	101.56	7.63	100.00
KAI01CCN2	idAAA	7.300	9-Aug-31	100.00	7.30	83.00
SIEXCL03BCN1	idAAA(sy)	7.400	1-Sep-27	100.85	7.09	80.00
SMFP06CN3	idAAA	6.950	21-Sep-27	101.54	6.40	60.00
MEDC04ACN3	idAA-	7.000	26-Jul-25	99.65	7.02	48.00
SWIATA01ACN1	idA-(sy)	10.750	16-Oct-24	100.00	10.75	47.29
SMFP01SOCN2	idAAA	6.750	27-Mar-29	100.75	6.56	45.00
SMBRIS01CCN1	idAAA(sy)	6.800	14-Jun-27	100.95	6.43	43.30
LPPI01BCN2	idA	9.500	22-Apr-25	102.56	9.26	40.00

SOVEREIGN BOND YIELDS

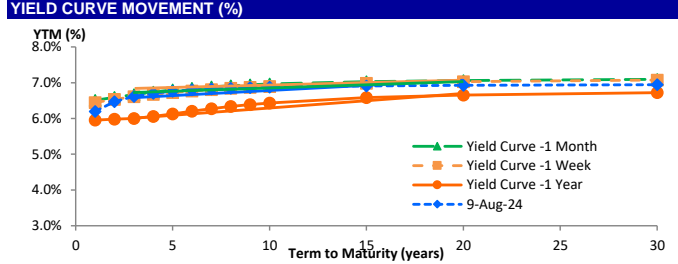
Country	Tenor	Coupon (%)	9-Aug-24	MA LTM as of Jul	MA LTM as of Jun	Spread over UST YC (bps)		
						9-Aug-24	Jul	Jun
United States	2yr		4.97	4.97	4.85			
USD	5yr		4.64	4.64	4.54			
	10yr		4.37	4.37	4.19			
German	2yr	0.25	2.41	2.53	2.83	-299	-287	-254
EUR	5yr	1.00	2.16	2.23	2.48	-248	-241	-206
	10yr	1.75	2.26	2.30	2.50	-212	-207	-169
Indonesia	2yr	4.13	5.17	5.44	6.02	-23	4	65
USD	5yr	3.50	4.81	5.02	5.29	17	38	75
	10yr	3.85	4.81	4.97	5.19	44	60	100
Brazil	2yr	0.00	11.71	11.80	11.74	631	640	637
BRL	3yr	0.00	11.80	11.96	12.15	640	656	678
	10yr	10.00	11.81	11.89	12.34	641	649	697
Philippines	2yr	6.00	6.03	6.01	6.27	63	61	90
PHP	5yr	7.88	6.18	6.24	6.47	154	160	193
	10yr	11.38	6.15	6.16	6.68	178	179	249
Thailand	2yr	3.13	2.24	2.33	2.36	-316	-307	-301
THB	5yr	3.45	2.34	2.38	-	-230	-226	-
	10yr	3.63	2.61	2.60	2.69	-176	-177	-150
India	2yr	7.59	6.78	-	-	138	-	-
INR	5yr	7.28	6.81	6.85	7.03	217	221	249
	10yr	8.83	6.88	6.93	7.01	251	256	282
Malaysia	3yr	3.17	3.34	3.38	3.54	-163	-159	-131
MYR	5yr	3.26	3.51	3.55	3.66	-113	-109	-88
	10yr	4.18	3.77	3.73	3.88	-60	-64	-31

Sources: Bloomberg (Current Yield Curve), US Treasury

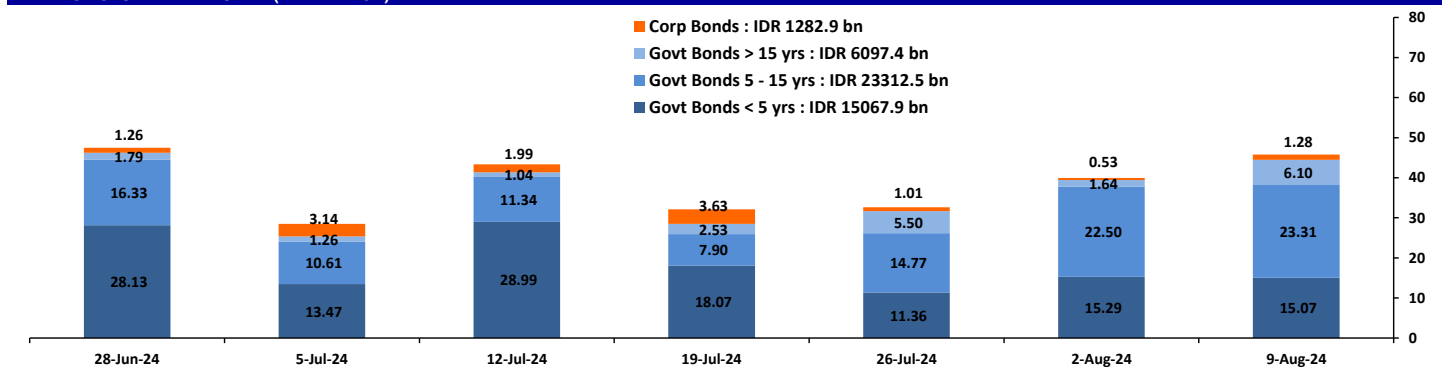
YIELD OF GOVERNMENT BOND BENCHMARK (%)



YIELD CURVE MOVEMENT (%)



TRADING VOLUME BY MATURITY (IDR TRILLION)



CURRENCY

Price	9-Aug-24	-1 Day	-1 Week	-1 Month	EoP2023
DXV	103.18	↓	103.21	103.21	105.13
USD : IDR	15,925	↑	15,895	16,200	16,250
EUR : USD	1.09	↓	1.09	1.09	1.10
JPY : USD	147.22	↑	147.23	146.53	161.33
USD : CNY	7.174	↓	7.176	7.172	7.273
USD : SGD	4.429	↓	4.473	4.497	4.707
SGD : IDR	12,032	↑	12,002	12,158	12,038

Source: Bloomberg

COMMODITY

Price	9-Aug-24	-1 Day	-1 Week	-1 Month	EoP2023
CPO	3,830	↑	3,807	4,021	4,015
Coal	145.50	→	145.50	144.10	135.25
Gold	2,424	↓	2,428	2,443	2,364
Nickel	15,916	→	15,916	16,062	16,885
Copper	403.80	↑	395.90	410.30	457.80
Brent	80.50	↑	79.73	78.21	86.00
Metal	2,423.78	↓	2,427.53	2,443.24	2,364.09

PHEI FAIR SPREAD

	1Y	2Y	3Y	4Y	5Y	6Y	7Y	8Y	9Y	10Y
AAA	63	63	63	64	66	68	68	69	69	68
AA+	74	79	86	93	100	105	109	113	116	118
AA	93	107	120	131	141	150	157	163	168	172
AA-	128	155	173	186	197	206	215	222	229	234
A+	174	214	236	251	262	272	282	290	297	303
A	224	273	299	316	330	342	353	362	369	375
A-	274	322	352	376	396	412	426	436	444	450
BBB+	322	363	398	430	459	482	499	511	520	525
BBB	369	401	440	482	520	551	572	587	596	601

*interpolated, as of August 09, 2024 (bps)

	07-Aug-2024	WoW	MtD	YTD
Banks	1,171.7	(19.19)	(19.19)	(341.81)
Bank Indonesia (exclude repo)	1,428.7	17.32	17.32	351.25
Non-Banks:	3,212.6	6.42	6.42	164.23
Mutual Fund	180.8	0.03	0.03	3.37
Insurance & Pension Fund	1,106.9	(1.11)	(1.11)	65.57
Foreign Investor	817.2	4.16	4.16	(25.40)
Individual	507.2	1.38	1.38	72.17
Others	600.5	1.96	1.96	48.52
Total	5,813.1	4.55	4.55	173.67
Domestic Investor	3,567.1	(16.93)	(16.93)	(152.18)
Foreign Investor	817.2	4.16	4.16	(25.40)
Bank Indonesia (include repo)	1,409.5	(1.56)	(1.56)	45.59

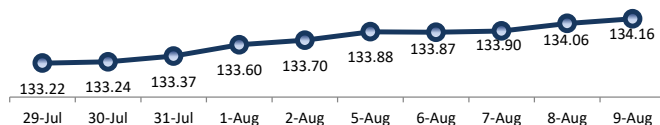
Source: DJPPR (Processed)

Sources: PHEI, Bloomberg

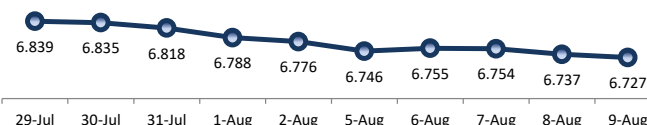
VALUATIONS OF GOVERNMENT BONDS

Bond	Issue Date	Mature Date	Coupon	TTM	Modified Duration	YTM	(Change)	Prev Closing Price	Fair Yield Range	Fair Price Range	Last Trade					
											Date	Price	Vol (IDR bn)	Freq		
FR0044	19-Apr-07	15-Sep-24	10.00	0.1	0.10	6.34	↑ 8.1bps	100.30	5.461	5.581	100.42	100.43	8-Aug-24	100.41	0.00	1
FR0081	1-Aug-19	15-Jun-25	6.50	0.9	0.81	6.48	↓ -0.5bps	100.01	6.299	6.419	100.06	100.15	9-Aug-24	100.43	1,319.92	123
FR0040	21-Sep-06	15-Sep-25	11.00	1.1	0.99	6.40	↑ 0.4bps	104.76	6.277	6.397	104.80	104.93	9-Aug-24	106.60	15.31	54
FR0084	4-May-20	15-Feb-26	7.25	1.5	1.37	6.44	↓ -0.1bps	101.15	6.383	6.503	101.06	101.23	8-Aug-24	100.81	15.24	1
FR0086	13-Aug-20	15-Apr-26	5.50	1.7	1.55	6.50	↑ 0.1bps	98.43	6.389	6.509	98.40	98.59	9-Aug-24	99.60	352.87	48
FR0037	18-May-06	15-Sep-26	12.00	2.1	1.79	6.49	↑ 0.5bps	110.59	6.453	6.545	110.53	110.72	30-Jul-24	110.48	10.00	2
FR0056	23-Sep-10	15-Sep-26	8.38	2.1	1.85	6.52	↑ 0.5bps	103.56	6.434	6.531	103.55	103.75	9-Aug-24	104.05	184.83	17
FR0090	8-Jul-21	15-Apr-27	5.13	2.7	2.42	6.61	↓ -0.8bps	96.41	6.494	6.614	96.38	96.67	9-Aug-24	96.71	47.67	39
FR0059	15-Sep-11	15-May-27	7.00	2.8	2.45	6.48	↓ -0.7bps	101.28	6.448	6.529	101.16	101.36	9-Aug-24	102.15	228.18	14
FR0042	25-Jan-07	15-Jul-27	10.25	2.9	2.52	6.55	↑ 0.3bps	109.68	6.540	6.659	109.41	109.75	9-Aug-24	109.82	0.03	1
FR0094	4-Mar-22	15-Jan-28	5.60	3.4	3.05	6.66	↑ 0.1bps	96.80	6.653	6.773	96.46	96.81	16-Oct-23	95.70	0.53	1
FR0047	30-Aug-07	15-Feb-28	10.00	3.5	2.85	6.61	↑ 1.1bps	110.44	6.552	6.672	110.28	110.67	8-Aug-24	112.71	0.01	4
FR0064	13-Aug-12	15-May-28	6.13	3.8	3.26	6.52	↓ -2.2bps	98.68	6.519	6.639	98.30	98.69	9-Aug-24	99.40	17.59	17
FR0095	19-Aug-22	15-Aug-28	6.38	4.0	3.39	6.53	↓ -2.2bps	99.45	6.524	6.645	99.06	99.48	9-Aug-24	99.40	205.59	22
FR0099	27-Jan-23	15-Jan-29	6.40	4.4	3.78	6.61	→ 0.0bps	99.20	6.664	6.784	98.54	98.99	25-Sep-23	99.77	139.50	19
FR0071	12-Sep-13	15-Mar-29	9.00	4.6	3.66	6.65	↓ -0.1bps	109.15	6.615	6.735	108.82	109.32	9-Aug-24	109.36	106.36	7
FR101	2-Nov-23	15-Apr-29	6.88	4.7	3.87	6.59	↓ -0.3bps	101.10	6.600	6.721	100.60	101.08	9-Aug-24	101.75	2,412.73	46
FR0078	27-Sep-18	15-May-29	8.25	4.8	3.86	6.64	↓ -0.4bps	106.44	6.637	6.757	105.98	106.48	9-Aug-24	106.58	61.15	8
FR0052	20-Aug-09	15-Aug-30	10.50	6.0	4.40	6.70	↑ 0.2bps	118.55	6.712	6.832	117.85	118.50	8-Aug-24	119.79	0.00	1
FR0082	1-Aug-19	15-Sep-30	7.00	6.1	4.78	6.70	↓ -0.1bps	101.50	6.660	6.780	101.08	101.67	9-Aug-24	101.40	654.61	18
FR0087	13-Aug-20	15-Feb-31	6.50	6.5	5.07	6.71	↓ -1.1bps	98.93	6.679	6.799	98.44	99.06	9-Aug-24	97.10	111.39	39
FR0085	4-May-20	15-Apr-31	7.75	6.7	5.08	6.84	→ 0.0bps	104.82	6.791	6.890	104.53	105.07	5-Aug-24	105.30	0.30	1
FR0073	6-Aug-15	15-May-31	8.75	6.8	5.06	6.82	↑ 0.1bps	110.31	6.757	6.877	109.98	110.66	9-Aug-24	109.75	26.47	15
FR0054	22-Jul-10	15-Jul-31	9.50	6.9	5.15	6.84	↓ -0.1bps	114.45	6.777	6.897	114.14	114.86	9-Aug-24	115.75	0.20	3
FR0091	8-Jul-21	15-Apr-32	6.38	7.7	5.85	6.74	↓ -1.5bps	97.84	6.740	6.848	97.20	97.83	9-Aug-24	97.95	75.06	96
FR0058	21-Jul-11	15-Jun-32	8.25	7.9	5.76	6.82	↓ -0.1bps	108.54	6.797	6.917	107.96	108.72	9-Aug-24	108.60	70.00	3
FR0074	10-Nov-16	15-Aug-32	7.50	8.0	5.81	6.80	↓ -1.9bps	104.29	6.750	6.870	103.83	104.58	9-Aug-24	104.85	1.60	7
FR0096	19-Aug-22	15-Feb-33	7.00	8.5	6.15	6.77	↓ -0.8bps	101.49	6.750	6.857	100.91	101.60	9-Aug-24	101.50	528.40	42
FR0065	30-Aug-12	15-May-33	6.63	8.8	6.45	6.81	↓ -1.1bps	98.79	6.798	6.884	98.30	98.86	9-Aug-24	99.48	13.67	34
FR100	25-Aug-23	15-Feb-34	6.63	9.5	6.74	6.76	↓ -1.2bps	99.07	6.758	6.878	98.25	99.08	9-Aug-24	99.08	3,374.17	225
FR0068	1-Aug-13	15-Mar-34	8.38	9.6	6.52	6.80	↓ -1.2bps	110.97	6.773	6.880	110.37	111.17	9-Aug-24	110.88	914.98	29
FR0080	4-Jul-19	15-Jun-35	7.50	10.9	7.37	6.81	↓ -3.0bps	105.23	6.816	6.932	104.27	105.18	9-Aug-24	105.42	452.97	30
FR0072	9-Jul-15	15-May-36	8.25	11.8	7.57	6.89	↓ -2.1bps	110.78	6.876	6.925	110.53	110.94	9-Aug-24	110.95	147.18	13
FR0088	7-Jan-21	15-Jun-36	6.25	11.9	8.10	6.82	↓ -0.4bps	95.44	6.765	6.848	95.19	95.84	9-Aug-24	94.75	25.03	53
FR0045	24-May-07	15-May-37	9.75	12.8	7.70	6.92	↓ -0.4bps	123.73	6.892	6.976	123.17	123.99	9-Aug-24	125.60	0.00	2
FR0093	6-Jan-22	15-Jul-37	6.38	12.9	8.60	6.74	↓ -2.9bps	96.91	6.714	6.834	96.10	97.10	9-Aug-24	98.75	30.48	29
FR0075	10-Aug-17	15-May-38	7.50	13.8	8.51	6.90	↓ -3.8bps	105.22	6.904	7.012	104.25	105.22	9-Aug-24	105.85	41.10	10
FR098	15-Sep-22	15-Jun-38	7.13	13.9	8.69	6.88	↓ -1.4bps	102.20	6.879	6.999	101.10	102.17	9-Aug-24	100.00	214.40	40
FR0050	24-Jan-08	15-Jul-38	10.50	13.9	8.08	7.01	↓ -0.2bps	130.69	6.908	7.012	130.69	131.80	9-Aug-24	131.22	1.00	2
FR0079	7-Jan-19	15-Apr-39	8.38	14.7	8.56	7.00	↓ -0.2bps	112.45	6.926	7.001	112.46	113.20	9-Aug-24	113.50	33.81	11
FR0083	7-Nov-19	15-Apr-40	7.50	15.7	9.12	6.91	↓ -6.3bps	105.55	6.914	6.989	104.80	105.54	9-Aug-24	105.50	78.41	35
FR0057	21-Apr-11	15-May-41	9.50	16.8	9.04	7.00	→ 0.0bps	124.44	6.867	6.987	124.58	125.96	1-Aug-24	124.00	0.00	1
FR0062	9-Feb-12	15-Apr-42	6.38	17.7	10.03	7.02	→ 0.0bps	93.50	6.877	6.997	93.73	94.89	9-Aug-24	94.50	3.13	6
FR0092	8-Jul-21	15-Jun-42	7.13	17.9	10.00	6.92	↓ -1.2bps	102.06	6.895	7.011	101.14	102.32	9-Aug-24	103.50	15.78	32
FR097	19-Aug-22	15-Jun-43	7.13	18.9	10.27	6.93	↓ -0.6bps	102.03	6.905	7.025	101.02	102.29	9-Aug-24	102.05	152.15	78
FR0067	18-Jul-13	15-Feb-44	8.75	19.5	9.74	7.02	→ 0.0bps	118.19	6.914	7.034	118.06	119.50	7-Aug-24	118.40	8.00	4
FR0076	22-Sep-17	15-May-48	7.38	23.8	11.22	6.98	↓ -0.4bps	104.56	6.934	7.055	103.65	105.08	9-Aug-24	104.43	97.66	41
FR0089	7-Jan-21	15-Aug-51	6.88	27.0	11.73	6.97	↓ -0.1bps	98.86	6.888	7.009	98.39	99.83	9-Aug-24	98.95	41.64	50
FR102	3-Jan-24	15-Jul-54	6.88	29.9	12.47	6.97	↓ -0.5bps	98.78	6.878	6.998	98.46	99.95	9-Aug-24	98.85	452.27	166
ORI020	27-Oct-21	15-Oct-24	4.95	0.2	-	6.71	↓ -0.3bps	99.70	6.636	6.756	99.67	99.69	9-Aug-24	99.50	12.59	24
ORI021	23-Feb-22	15-Feb-25	4.90	0.5	-	6.67	↓ -0.3bps	99.12	6.385	6.505	99.19	99.25	9-Aug-24	98.90	13.27	38
ORI022	26-Oct-22	15-Oct-25	5.95	1.2	-	6.65	↓ -0.3bps	99.21	6.440	6.560	99.31	99.44	9-Aug-24	99.40	5.28	17
IFR0007	21-Jan-10	15-Jan-25	10.25	0.4	0.42	6.52	↓ -1.0bps	101.51	6.267	6.387	101.61	101.66	27-Jan-22	115.88	30.00	3
PBS036	25-Aug-22	15-Aug-25	5.38	1.0	0.95	6.50	↓ -1.1bps	98.93	6.434	6.554	98.86	98.97	9-Aug-24	100.10	79.61	60
PBS017	11-Jan-18	15-Oct-25	6.13	1.2	1.10	6.51	↓ -4.0bps	99.56	6.446	6.566	99.49	99.63	9-Aug-24	101.00	375.00	27
PBS032	29-Jul-21	15-Jul-26	4.88	1.9	1.80	6.67	↑ 1.1bps	96.81	6.569	6.689	96.76	96.97	9-Aug-24	98.10	1,815.20	289
PBS021	5-Dec-18	15-Nov-26	8.50	2.3	2.01	6.61	↓ -0.7bps	104.10	6.366	6.486	104.17	104.42	7-Aug-24	105.15	0.10	1
PBS003	2-Feb-12	15-Jan-27	6.00	2.4	2.21	6.71	→ 0.0bps	98.43	6.580	6.701	98.45	98.71	9-Aug-24	98.57	33.41	17
PBS020	22-Oct-18	15-Oct-27	9.00	3.2	2.69	6.57	↓ -0.9bps	106.85	6.471	6.591	106.80	107.15	31-Jul-24	108.25	0.50	1
PBS018	4-Jun-18	15-May-28	7.63	3.8	3.19	6.57	↓ -0.7bps	103.46	6.461	6.582	103.42	103.82	3-Sep-19	99.29	2,000.00	2
PBS030	4-Jun-21	15-Jul-28	5.88	3.9	3.43	6.64	↓ -0.6bps	97.40	6.562	6.682	97.24	97.65	9-Aug-24	99.00	1.85	5
PBSG001	22-Sep-22	15-Sep-29	6.63	5.1	4.16	6.65	↓ -0.7bps	99.89	6.522	6.642	99.92	100.43	8-Aug-24	100.17	160.00	4
PBS023	15-May-19	15-May-30	6.63	5.8	4.66	6.60	↓ -0.7bps	107.21	6.494	6.614	100.04	100.61	18-Mar-24	108.70	0.50	1
PBS012	28-Jan-16	15-Nov-31	8.88	7.3	5.36	6.49	↑ 0.4bps	113.63	6.351	6.471	113.75	114.50	8-Aug-24	112.75	12.00	4
PBS024	28-May-19	15-May-32	8.38	7.8	5.68	6.61	↓ -0.7bps	110.56	6.473	6.593	110.68	111.45	20-Dec-22	94.07	15.00	22
PBS025	29-May-19	15-May-33	8.38	8.8	6.20	6.67	↓ -0.9bps	111.17	6.512	6.632	111.43	112.28	30-Jul-24	110.25	60.00	6
PBS029	14-Jan-21	15-Mar-34	6.38	9.6	6.88	6.74	↓ -1.4bps	97.46	6.471	6.591	98.47	99.31	9-Aug-24	95.75	0.58	2

PRICE INDEX



YIELD INDEX



TECHNICAL ANALYSIS

FR0101

INDICATORS	9-Aug-24	-1 Day	Change
Last Price	101.10	101.09	0.01
DI+	41.73	35.80	5.94
DI-	41.71	42.49	(0.77)
ADX (15D)	27.23	29.46	(2.22)
A/D	15,240.49	17,657.03	(2,416.54)
CMF(20D)	0.241	0.276	(0.04)
CCI	113.22	114.09	(0.87)
Volume (IDR bn)	2,412.73	1,406.96	1,005.78
Frequency	46	67	(21)

COMMENT

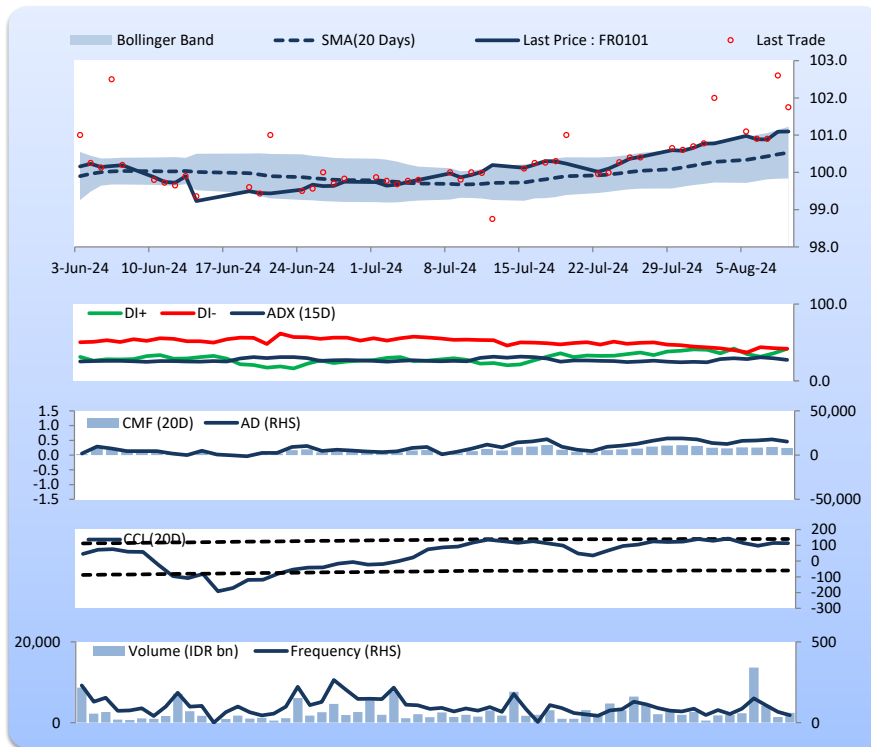
Price increased slightly; heavy trade volume; upward trend continues to weaken; buying pressure eased; CCI declined.

HOLD

FEATURES

Issue Date	2-Nov-23
Mature Date	15-Apr-29
Tenor	4.7
Coupon Rate	6.88
Last Yield	6.60
Modified Duration	3.87
Previous Coupon Date	15-Apr-24
Next Coupon Date	15-Oct-24

Sources: Bloomberg (Price); IDX



FR0100

INDICATORS	9-Aug-24	-1 Day	Change
Last Price	99.07	98.98	0.08
DI+	58.29	57.31	0.98
DI-	17.25	17.90	(0.65)
ADX (15D)	29.34	27.56	1.78
A/D	14,535.51	16,646.37	(2,110.86)
CMF(20D)	0.183	0.206	(0.02)
CCI	118.34	121.76	(3.42)
Volume (IDR bn)	3,374.17	2,978.67	395.50
Frequency	225	250	(25)

COMMENT

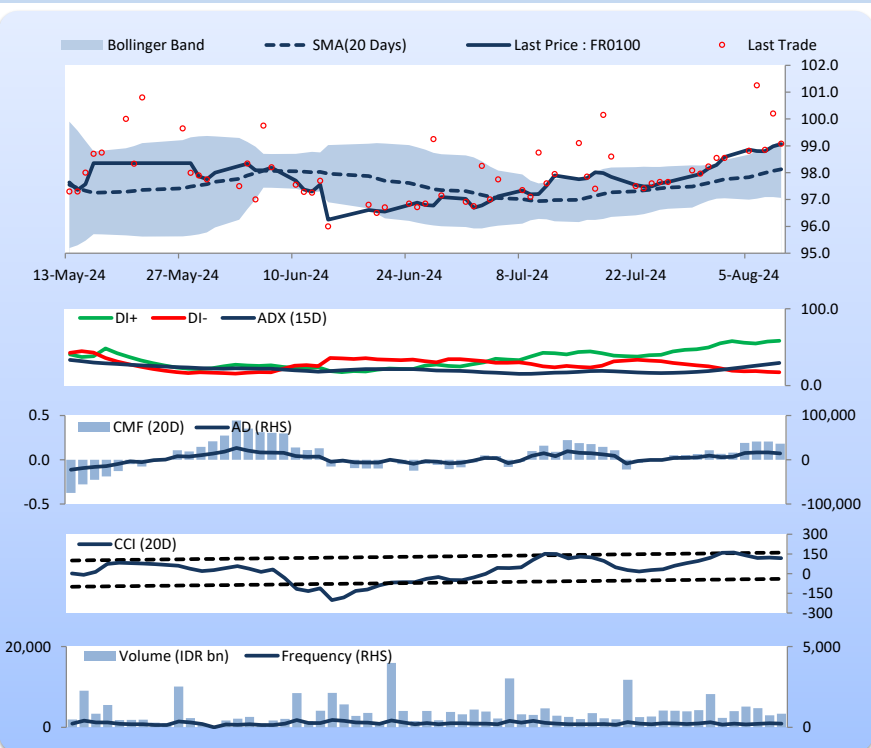
Price increased; heavy trade volume; upward trend continues to strengthen; buying pressure eased; CCI declined.

HOLD

FEATURES

Issue Date	24-Aug-23
Mature Date	15-Feb-34
Tenor	9.5
Coupon Rate	6.63
Last Yield	6.76
Modified Duration	6.74
Previous Coupon Date	15-Feb-24
Next Coupon Date	15-Aug-24

Sources: Bloomberg (Price); IDX



FR0097

INDICATORS	9-Aug-24	-1 Day	Change
Last Price	102.03	101.95	0.07
DI+	50.74	48.41	2.33
DI-	23.50	23.13	0.38
ADX (15D)	14.74	13.78	0.96
A/D	3,922.62	4,362.37	(439.75)
CMF(20D)	0.250	0.270	(0.02)
CCI	132.02	133.37	(1.35)
Volume (IDR bn)	152.15	1,774.17	(1,622.02)
Frequency	78	177	(99)

COMMENT

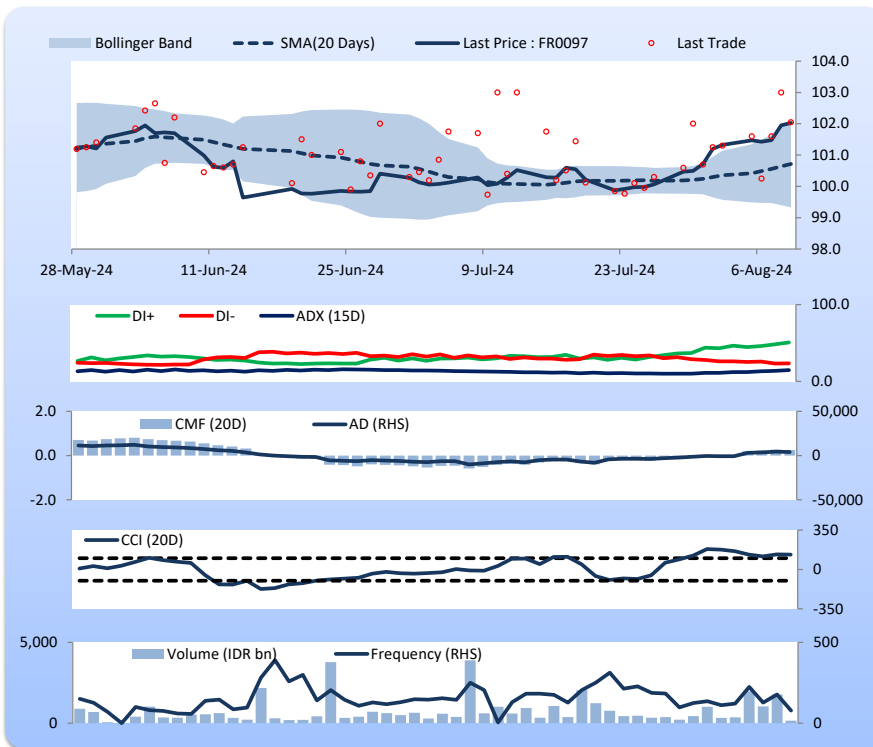
Price increased; light trade volume; upward trend continues to strengthen; buying pressure eased; CCI declined.

HOLD

FEATURES

Issue Date	19-Aug-22
Mature Date	15-Jun-43
Tenor	18.8
Coupon Rate	7.13
Last Yield	6.93
Modified Duration	10.27
Previous Coupon Date	15-Jun-24
Next Coupon Date	15-Dec-24

Sources: Bloomberg (Price); IDX



FR0098

INDICATORS	9-Aug-24	-1 Day	Change
Last Price	102.19	102.07	0.12
DI+	58.95	57.27	1.68
DI-	18.84	19.61	(0.77)
ADX (15D)	24.66	22.74	1.92
A/D	8,987.60	9,585.85	(598.25)
CMF(20D)	0.462	0.475	(0.01)
CCI	128.69	127.32	1.37
Volume (IDR bn)	214.40	1,308.64	(1,094.24)
Frequency	40	114	(74)

COMMENT

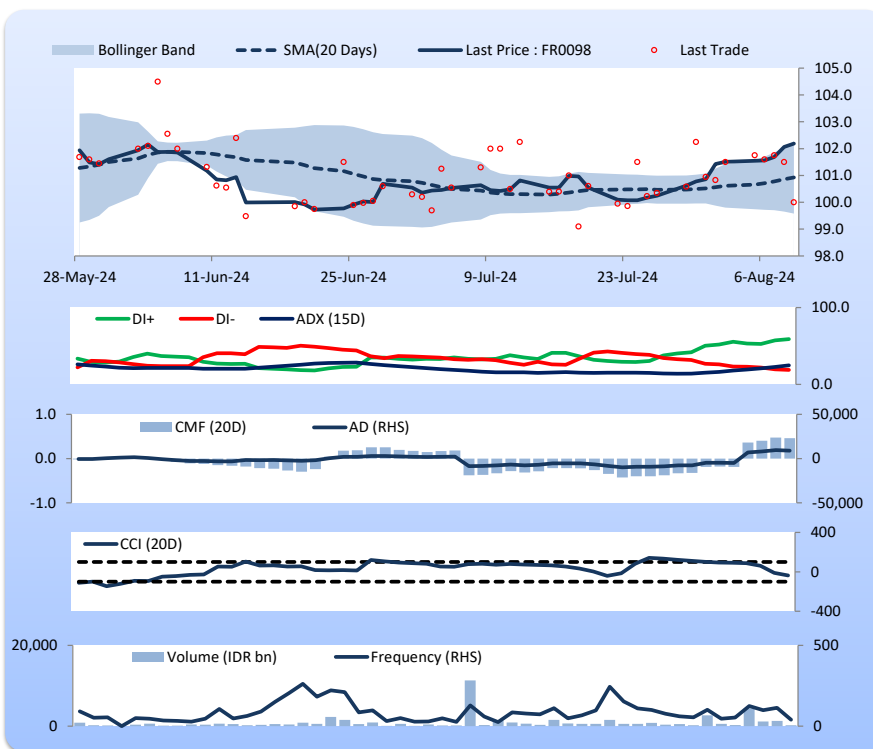
Price increased; moderate trade volume; upward trend continues to strengthen; buying pressure eased; CCI increased.

HOLD

FEATURES

Issue Date	15-Sep-22
Mature Date	15-Jun-38
Tenor (year)	13.8
Coupon Rate	7.13
Last Yield	6.88
Modified Duration	8.69
Previous Coupon Date	15-Jun-24
Next Coupon Date	15-Dec-24

Sources: Bloomberg (Price); IDX



Analysts: Laras Nerpatari & Eka Nuraini

DISCLAIMER: The information contained in this report has been taken from sources which we deem reliable. However, none of P.T. BRI Danareksa Sekuritas and/or its affiliated companies and/or their respective employees and/or agents makes any representation or warranty (express or implied) or accepts any responsibility or liability as to, or in relation to, the accuracy or completeness of the information and opinions contained in this report or as to any information contained in this report or any other such information or opinions remaining unchanged after the issue thereof. We expressly disclaim any responsibility or liability (express or implied) of P.T. BRI Danareksa Sekuritas, its affiliated companies and their respective employees and agents whatsoever and howsoever arising (including, without limitation for any claims, proceedings, action, suits, losses, expenses, damages or costs) which may be brought against or suffered by any person as a result of acting in reliance upon the whole or any part of the contents of this report and neither P.T. BRI Danareksa Sekuritas, its affiliated companies or their respective employees or agents accepts liability for any errors, omissions or mis-statements, negligent or otherwise, in the report and any liability in respect of the report or any inaccuracy therein or omission therefrom which might otherwise arise is hereby expressly disclaimed. The information contained in this report is not to be taken as any recommendation made by P.T. BRI Danareksa Sekuritas or any other person to enter into any agreement with regard to any investment mentioned in this document. This report is prepared for general circulation. It does not have regards to the specific person who may receive this report. In considering any investments you should make your own independent assessment and seek your own professional financial and legal advice.