

MOST ACTIVE GOVERNMENT BONDS

Bond	Coupon	Maturity	Last Price	Yield	Volume (IDR bn)
FR0101	6.875	15-Apr-29	99.50	6.975	1,923.89
FR0091	6.375	15-Apr-32	95.90	7.056	1,905.76
FR0100	6.625	15-Feb-34	96.85	7.092	1,116.32
PBS036	4.000	15-Aug-25	98.25	6.901	776.53
FR0081	6.500	15-Jun-25	99.85	6.670	642.95
FR0098	7.125	15-Jun-38	101.50	7.151	576.18
FR0080	7.500	15-Jun-35	101.75	7.124	516.71
FR0097	7.125	15-Jun-43	101.10	7.139	420.31
FR0059	7.000	15-May-27	99.75	6.764	227.96
FR0083	7.500	15-Apr-40	104.00	7.168	205.70

Coupon, Last Price & Yield are in %; Volume is in IDR bn; Rating code: id(Pefindo) & idn (Fitch Indonesia)
Sources: Bloomberg; Indonesia Stock Exchange (Volume)

MOST ACTIVE CORPORATE BONDS

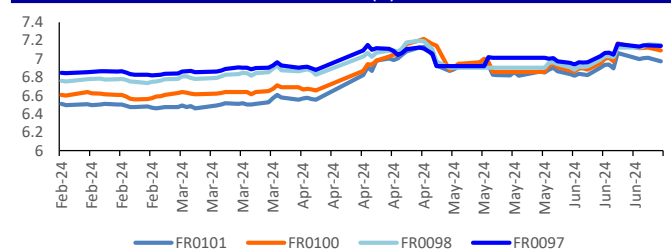
Bond	Rating	Coupon	Maturity	Last Price	Yield	Volume
SMBRIS01ACN1	idAAA(sy)	6.650	24-Jun-25	100.03	6.62	1,029.00
INKP04BCN5	idA+	10.500	21-Jun-27	99.85	10.56	334.20
MDKA03BCN1	idA+	7.800	8-Mar-25	100.40	7.77	310.00
SMPIDL02A	idA(sy)	8.250	13-Jan-25	99.35	8.30	140.00
SMOPPM01ACN1	idA+(sy)	10.500	12-Oct-26	106.14	7.57	78.00
SMINKP01BCN1	idA+(sy)	9.250	30-Sep-24	100.50	9.20	60.00
OPPM01B	idA+	9.500	8-Jul-24	100.38	9.46	50.00
PTHK02ACN2	idA	6.500	12-Jan-25	98.70	6.59	38.00
LTLS03ACN2	idA-	9.000	12-Nov-24	100.50	8.96	36.00
BSDE03ACN1	idAA-	6.750	7-Apr-25	99.51	6.78	30.00

SOVEREIGN BOND YIELDS

Country	Tenor	Coupon (%)	24-Jun-24	MA LTM as of May	MA LTM as of Apr	Spread over UST YC (bps)		
						24-Jun-24	May	Apr
United States	2yr		4.97	4.97	4.85			
USD	5yr		4.64	4.64	4.54			
	10yr		4.37	4.37	4.19			
German	2yr	0.25	2.80	3.10	3.03	-260	-230	-234
EUR	5yr	1.00	2.43	2.71	2.62	-222	-193	-192
	10yr	1.75	2.42	2.66	2.58	-196	-171	-161
Indonesia	2yr	4.13	5.92	5.76	5.76	52	36	39
USD	5yr	3.50	5.23	5.43	5.53	59	79	99
	10yr	3.85	5.15	5.37	5.47	78	100	128
Brazil	2yr	0.00	11.29	10.95	10.78	589	555	541
BRL	3yr	0.00	11.71	11.38	11.23	631	598	586
	10yr	10.00	11.97	11.90	11.87	657	650	650
Philippines	2yr	6.00	6.29	6.33	6.56	89	93	119
PHP	5yr	7.88	6.54	6.51	6.90	190	187	236
	10yr	11.38	6.69	6.73	6.95	232	236	276
Thailand	2yr	3.13	2.37	2.40	2.39	-303	-300	-298
THB	5yr	3.45	2.46	2.52	2.57	-218	-212	-197
	10yr	3.63	2.70	2.84	2.78	-167	-153	-141
India	2yr	7.59	6.98	7.02	7.14	158	162	177
INR	5yr	7.28	7.00	7.05	7.20	236	241	266
	10yr	8.83	6.98	6.99	7.19	261	262	300
Malaysia	3yr	3.17	3.54	3.59	3.63	-143	-138	-122
MYR	5yr	3.26	3.65	3.71	3.80	-99	-93	-74
	10yr	4.18	3.87	3.90	3.99	-50	-47	-20

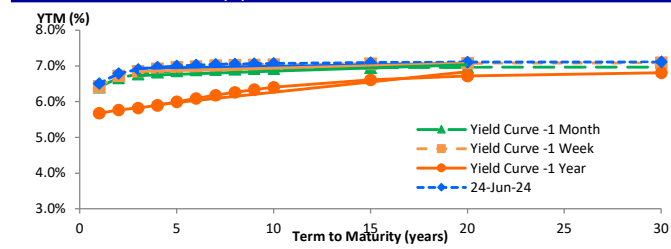
Sources: Bloomberg (Current Yield Curve), US Treasury

YIELD OF GOVERNMENT BOND BENCHMARK (%)



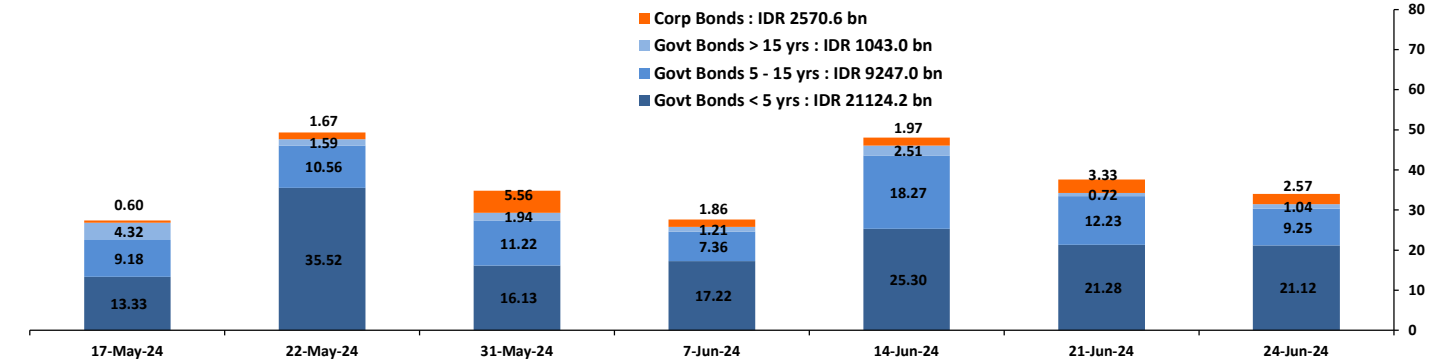
Source: DJPPR

YIELD CURVE MOVEMENT (%)



Source: Bloomberg

TRADING VOLUME BY MATURITY (IDR TRILLION)



Sources: Indonesia Stock Exchange

CURRENCY

Price	24-Jun-24	-1 Day	-1 Week	-1 Month	EoP2023
DX	105.63	↓	105.80	105.32	104.72
USD : IDR	16,394	↓	16,450	16,400	15,993
EUR : USD	1.07	↓	1.07	1.07	1.10
JPY : USD	159.61	↑	159.80	157.74	156.99
USD : CNY	7.262	↑	7.261	7.256	7.244
USD : SGD	4.711	↓	4.713	4.721	4.712
SGD : IDR	12,117	↓	12,149	12,129	11,866

Source: Bloomberg

COMMODITY

Price	24-Jun-24	-1 Day	-1 Week	-1 Month	EoP2023
CPO	3,937	↑	3,930	3,983	3,872
Coal	132.05	→	132.05	133.90	142.80
Gold	2,331	↑	2,322	2,319	2,334
Nickel	17,055	→	17,055	17,199	20,090
Copper	445.45	↑	444.20	444.75	477.85
Brent	86.62	↑	86.09	83.32	79.91
Metal	2,330.53	↑	2,321.98	2,319.14	2,333.83

PHEI FAIR SPREAD

	1Y	2Y	3Y	4Y	5Y	6Y	7Y	8Y	9Y	10Y
AAA	63	65	65	66	68	70	72	74	75	76
AA+	74	81	87	94	101	108	115	120	124	127
AA	94	109	120	131	142	153	162	170	176	181
AA-	127	156	173	184	196	208	219	228	236	242
A+	171	215	236	248	260	271	283	293	302	309
A	221	275	300	314	327	340	352	363	372	380
A-	274	328	356	376	393	410	424	437	446	454
BBB+	328	373	405	433	458	480	498	512	523	530
BBB	382	416	450	487	522	551	573	589	600	607

*interpolated, as of June 24, 2024 (bps)

SBN HOLDING - (IDR tn)

	21-Jun-2024	WoW	MoM	YTD
Banks	1,300.2	(35.6)	(18.4)	(213.3)
Bank Indonesia (exclude repo)	1,314.4	41.9	36.9	237.0
Non-Banks:	3,165.3	1.7	19.4	116.9
Mutual Fund	178.8	0.3	2.2	1.4
Insurance & Pension Fund	1,098.3	2.8	9.1	56.9
Foreign Investor	799.5	(6.4)	(7.5)	(43.1)
Individual	496.0	2.0	6.0	61.0
Others	592.7	3.1	9.6	40.7
Total	5,780.0	8.1	37.9	140.6
Domestic Investor	3,666.1	(27.5)	8.5	(53.2)
Foreign Investor	799.5	(6.4)	(7.5)	(43.1)
Bank Indonesia (include repo)	1,408.4	2.2	4.6	44.5

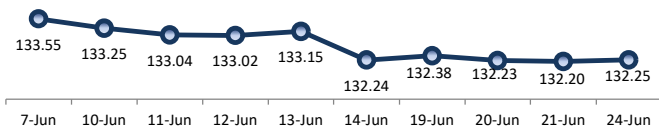
Source: DJPPR (Processed)

Sources: PHEI, Bloomberg

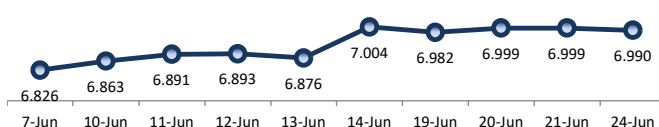
VALUATIONS OF GOVERNMENT BONDS

Bond	Issue Date	Mature Date	Coupon	TTM	Modified Duration	YTM (Change)	Prev Closing Price	Fair Yield Range	Fair Price Range	Last Trade						
										Date	Price	Vol (IDR bn)	Freq			
FR0044	19-Apr-07	15-Sep-24	10.00	0.2	0.22	5.83	↓ -42.5bps	100.87	6.175	6.252	100.80	100.81	24-Jun-24	100.40	0.01	1
FR0081	1-Aug-19	15-Jun-25	6.50	1.0	0.93	6.67	↓ -1.9bps	99.84	6.665	6.742	99.77	99.84	24-Jun-24	99.85	642.95	210
FR0040	21-Sep-06	15-Sep-25	11.00	1.2	1.11	6.65	↑ 5.4bps	104.99	6.516	6.593	105.09	105.18	24-Jun-24	104.80	21.88	68
FR0084	4-May-20	15-Feb-26	7.25	1.6	1.49	6.74	↓ -2.9bps	100.76	6.699	6.776	100.71	100.83	24-Jun-24	102.50	0.00	2
FR0086	13-Aug-20	15-Apr-26	5.50	1.8	1.67	6.75	↑ 2.0bps	97.91	6.716	6.793	97.82	97.95	24-Jun-24	97.95	56.19	63
FR0037	18-May-06	15-Sep-26	12.00	2.2	1.91	6.85	↑ 8.7bps	110.42	6.725	6.802	110.54	110.71	11-Jun-24	110.93	50.00	5
FR0056	23-Sep-10	15-Sep-26	8.38	2.2	1.97	6.82	↑ 2.8bps	103.14	7.012	7.089	102.59	102.75	24-Jun-24	103.20	177.88	26
FR0090	8-Jul-21	15-Apr-27	5.13	2.8	2.54	6.83	↓ -0.3bps	95.70	6.876	6.953	95.40	95.58	24-Jun-24	95.95	15.69	31
FR0059	15-Sep-11	15-May-27	7.00	2.9	2.56	6.76	↑ 0.5bps	100.60	6.813	6.890	100.27	100.47	24-Jun-24	99.75	227.96	38
FR0042	25-Jan-07	15-Jul-27	10.25	3.1	2.52	6.88	↑ 2.9bps	109.13	6.981	7.058	108.63	108.85	24-Jun-24	110.28	0.02	2
FR0094	4-Mar-22	15-Jan-28	5.60	3.6	3.08	6.86	↑ 6.8bps	96.09	6.871	6.948	95.81	96.04	16-Oct-23	95.70	0.53	1
FR0047	30-Aug-07	15-Feb-28	10.00	3.6	2.97	6.87	↑ 1.3bps	109.89	6.846	6.923	109.74	110.00	14-Jun-24	111.60	0.50	1
FR0064	13-Aug-12	15-May-28	6.13	3.9	3.38	6.93	↓ -1.0bps	97.29	6.917	6.994	97.07	97.33	24-Jun-24	96.00	17.59	32
FR0095	19-Aug-22	15-Aug-28	6.38	4.1	3.50	6.79	↓ -2.0bps	98.50	6.863	6.940	97.99	98.26	24-Jun-24	98.57	39.18	26
FR0099	27-Jan-23	15-Jan-29	6.40	4.6	3.78	6.87	↑ 3.9bps	98.19	6.781	6.858	98.23	98.52	25-Sep-23	99.77	139.50	19
FR0071	12-Sep-13	15-Mar-29	9.00	4.7	3.77	6.99	↓ -1.1bps	107.96	6.981	7.058	107.67	107.99	24-Jun-24	108.15	32.06	13
FR0101	2-Nov-23	15-Apr-29	6.88	4.8	3.98	6.98	↑ 3.7bps	99.58	6.980	7.057	99.26	99.57	24-Jun-24	99.50	1,923.89	146
FR0078	27-Sep-18	15-May-29	8.25	4.9	3.97	7.00	↓ -2.4bps	105.08	6.982	7.059	104.84	105.16	24-Jun-24	105.20	135.11	10
FR0052	20-Aug-09	15-Aug-30	10.50	6.1	4.50	6.97	↓ -2.0bps	117.38	7.100	7.177	116.25	116.67	24-Jun-24	117.08	140.00	4
FR0082	1-Aug-19	15-Sep-30	7.00	6.2	4.88	7.04	↓ -3.6bps	99.78	6.981	7.058	99.70	100.08	24-Jun-24	100.30	64.22	36
FR0087	13-Aug-20	15-Feb-31	6.50	6.6	5.17	7.03	↓ -1.2bps	97.22	6.994	7.071	97.00	97.40	24-Jun-24	97.23	77.59	53
FR0085	4-May-20	15-Apr-31	7.75	6.8	5.19	7.00	↓ -1.6bps	103.99	6.790	6.867	104.72	105.15	24-Jun-24	103.60	0.20	1
FR0073	6-Aug-15	15-May-31	8.75	6.9	5.17	7.04	↓ -0.2bps	109.18	7.020	7.092	108.90	109.31	24-Jun-24	109.75	44.94	14
FR0054	22-Jul-10	15-Jul-31	9.50	7.1	5.05	7.02	↓ -0.7bps	113.60	6.978	7.055	113.40	113.86	24-Jun-24	114.75	45.05	4
FR0091	8-Jul-21	15-Apr-32	6.38	7.8	5.95	7.06	↓ -1.4bps	95.96	6.979	7.056	95.95	96.39	24-Jun-24	95.90	1,905.76	120
FR0058	21-Jul-11	15-Jun-32	8.25	8.0	5.86	7.03	↓ -0.4bps	107.36	7.042	7.119	106.79	107.27	24-Jun-24	106.15	1.25	1
FR0074	10-Nov-16	15-Aug-32	7.50	8.1	5.90	7.10	↓ -0.2bps	102.41	7.035	7.112	102.36	102.83	24-Jun-24	101.00	52.53	17
FR0096	19-Aug-22	15-Feb-33	7.00	8.6	6.24	7.05	↑ 0.8bps	99.70	6.990	7.067	99.56	100.05	24-Jun-24	99.00	42.08	21
FR0065	30-Aug-12	15-May-33	6.63	8.9	6.54	7.07	↓ -4.0bps	97.12	7.004	7.081	97.02	97.51	24-Jun-24	96.00	12.99	39
FR0100	25-Aug-23	15-Feb-34	6.63	9.6	6.82	7.09	↑ -3.2bps	96.77	7.033	7.110	96.64	97.16	24-Jun-24	96.85	1,116.32	216
FR0068	1-Aug-13	15-Mar-34	8.38	9.7	6.60	7.10	↑ 0.6bps	108.86	7.013	7.090	108.90	109.47	24-Jun-24	108.95	72.98	22
FR0080	4-Jul-19	15-Jun-35	7.50	11.0	7.44	7.12	↓ -2.3bps	102.83	7.050	7.127	102.80	103.39	24-Jun-24	101.75	516.71	106
FR0072	9-Jul-15	15-May-36	8.25	11.9	7.65	7.12	↓ -0.8bps	108.96	7.063	7.137	108.81	109.43	24-Jun-24	109.55	12.62	15
FR0088	7-Jan-21	15-Jun-36	6.25	12.0	8.17	7.07	↓ -0.8bps	93.42	6.963	7.040	93.68	94.27	24-Jun-24	94.00	103.53	53
FR0045	24-May-07	15-May-37	9.75	12.9	7.78	7.10	↓ -1.1bps	122.15	6.957	7.034	122.76	123.51	13-Jun-24	123.10	10.00	1
FR0093	6-Jan-22	15-Jul-37	6.38	13.1	8.42	6.85	→ 0.0bps	95.97	6.982	7.059	94.22	94.85	24-Jun-24	92.19	10.83	16
FR0075	10-Aug-17	15-May-38	7.50	13.9	8.56	7.16	↑ 0.7bps	102.93	7.083	7.160	102.95	103.64	24-Jun-24	105.50	67.94	22
FR0098	15-Sep-22	15-Jun-38	7.13	14.0	8.74	7.15	↓ -0.5bps	99.77	7.061	7.138	99.89	100.56	24-Jun-24	101.50	576.18	182
FR0050	24-Jan-08	15-Jul-38	10.50	14.1	7.88	7.05	↑ 0.4bps	130.46	7.053	7.130	129.60	130.42	14-Jun-24	129.00	9.69	2
FR0079	7-Jan-19	15-Apr-39	8.38	14.8	8.66	7.09	↓ -1.0bps	111.67	7.147	7.224	110.35	111.10	24-Jun-24	112.15	9.65	18
FR0083	7-Nov-19	15-Apr-40	7.50	15.8	9.16	7.17	↓ -1.2bps	103.10	7.077	7.154	103.23	103.97	24-Jun-24	104.00	205.70	98
FR0057	21-Apr-11	15-May-41	9.50	16.9	9.16	7.00	↑ 0.2bps	124.50	7.044	7.121	123.14	124.02	2-May-24	121.70	0.47	2
FR0062	9-Feb-12	15-Apr-42	6.38	17.8	10.15	7.02	↓ -0.6bps	93.48	7.010	7.087	92.85	93.58	24-Jun-24	91.50	7.90	9
FR0092	8-Jul-21	15-Jun-42	7.13	18.0	10.05	7.09	↑ 3.3bps	100.33	7.053	7.129	99.95	100.73	24-Jun-24	98.50	7.88	36
FR0097	19-Aug-22	15-Jun-43	7.13	19.0	10.29	7.14	↓ -0.8bps	99.85	7.103	7.177	99.46	100.26	24-Jun-24	101.10	420.31	141
FR0067	18-Jul-13	15-Feb-44	8.75	19.6	9.82	7.11	↑ 3.9bps	117.18	7.061	7.138	116.87	117.78	24-Jun-24	118.26	30.00	2
FR0076	22-Sep-17	15-May-48	7.38	23.9	11.24	7.13	↓ -0.6bps	102.79	7.130	7.207	101.89	102.78	24-Jun-24	101.95	35.93	59
FR0089	7-Jan-21	15-Aug-51	6.88	27.1	11.72	7.13	↑ 0.2bps	96.98	7.086	7.163	96.56	97.46	24-Jun-24	96.00	49.92	80
ORI020	27-Oct-21	15-Oct-24	4.95	0.3	-	6.60	↓ -6.3bps	99.50	6.549	6.626	99.49	99.51	24-Jun-24	100.00	8.53	76
ORI021	23-Feb-22	15-Feb-25	4.90	0.6	-	6.59	↓ -6.3bps	98.94	6.343	6.420	99.05	99.09	24-Jun-24	97.50	24.07	98
ORI022	26-Oct-22	15-Oct-25	5.95	1.3	-	6.73	↓ -6.3bps	99.03	6.848	6.925	98.78	98.88	24-Jun-24	99.89	10.65	67
IFR0007	21-Jan-10	15-Jan-25	10.25	0.6	0.52	6.63	↓ -0.3bps	101.93	6.702	6.779	101.86	101.90	27-Jan-22	115.88	30.00	3
PBS036	25-Aug-22	15-Aug-25	5.38	1.1	1.07	6.90	↑ 7.6bps	98.35	6.869	6.946	98.29	98.38	24-Jun-24	98.25	776.53	104
PBS017	11-Jan-18	15-Oct-25	6.13	1.3	1.22	6.76	↑ 4.3bps	99.21	6.804	6.881	99.06	99.15	24-Jun-24	99.15	58.22	12
PBS032	29-Jul-21	15-Jul-26	4.88	2.1	1.88	6.72	↓ -0.8bps	96.51	6.885	6.962	96.06	96.20	24-Jun-24	96.00	99.36	358
PBS021	5-Dec-18	15-Nov-26	8.50	2.4	2.13	6.60	↑ 1.1bps	104.11	6.666	6.743	103.81	103.98	7-May-24	103.41	1.00	1
PBS003	2-Feb-12	15-Jan-27	6.00	2.6	2.27	6.80	↑ 4.0bps	98.15	6.728	6.805	98.14	98.31	24-Jun-24	96.80	3.74	16
PBS020	22-Oct-18	15-Oct-27	9.00	3.3	2.81	6.69	↓ -0.5bps	106.73	6.762	6.839	106.29	106.52	21-May-24	114.53	2.00	1
PBS018	4-Jun-18	15-May-28	7.63	3.9	3.31	6.63	→ 0.0bps	103.35	6.702	6.779	102.84	103.11	3-Sep-19	99.29	2,000.00	2
PBS030	4-Jun-21	15-Jul-28	5.88	4.1	3.45	6.63	↓ -0.1bps	97.37	6.744	6.821	96.69	96.95	24-Jun-24	97.70	1.35	3
PBSG001	22-Sep-22	15-Sep-29	6.63	5.2	4.28	6.67	↑ 7.5bps	99.78	6.679	6.756	99.42	99.75	19-Jun-24	98.25	6.71	1
PBS023	15-May-19	15-May-30	6.63	5.9	4.78	6.62	↑ 2.2bps	107.21	6.693	6.770	99.30	99.67	18-Mar-24	108.70	0.50	1
PBS012	28-Jan-16	15-Nov-31	8.88	7.4	5.48	6.49	↑ 0.4bps	113.81	6.650	6.727	112.34	112.81	24-Jun-24	113.83	0.80	1
PBS024	28-May-19	15-May-32	8.38	7.9	5.80	6.58	↓ -0.7bps	110.93	6.675	6.752	109.79	110.29	20-Dec-22	94.07	15.00	22
PBS025	29-May-19	15-May-33	8.38	8.9	6.33	6.62	↓ -2.6bps	111.66	6.728	6.805	110.33	110.87	13-Jun-24	111.25	5.00	1
PBS029	14-Jan-21	15-Mar-34	6.38	9.7	7.01	6.64	→ 0.0bps	98.13	6.651	6.638	98.12	98.66	24-Jun-24	96.00	2.00	3
PBS022	24-Jan-19	15-Apr-34	8.63	9.8	6.70	6.67	↓ -4.3bps	113.91	6.787	6.864	112.40	112.99	6-Jun-24	111.		

PRICE INDEX



YIELD INDEX



TECHNICAL ANALYSIS

FR0101

INDICATORS	24-Jun-24	-1 Day	Change
Last Price	99.58	99.44	0.15
DI+	23.31	26.47	(3.16)
DI-	56.26	54.78	1.48
ADX (15D)	26.80	25.95	0.85
A/D	3,076.07	2,520.80	555.28
CMF(20D)	0.064	0.054	0.01
CCI	-77.44	-118.73	41.30
Volume (IDR bn)	1,923.89	5,512.33	(3,588.45)
Frequency	146	148	(2)

COMMENT

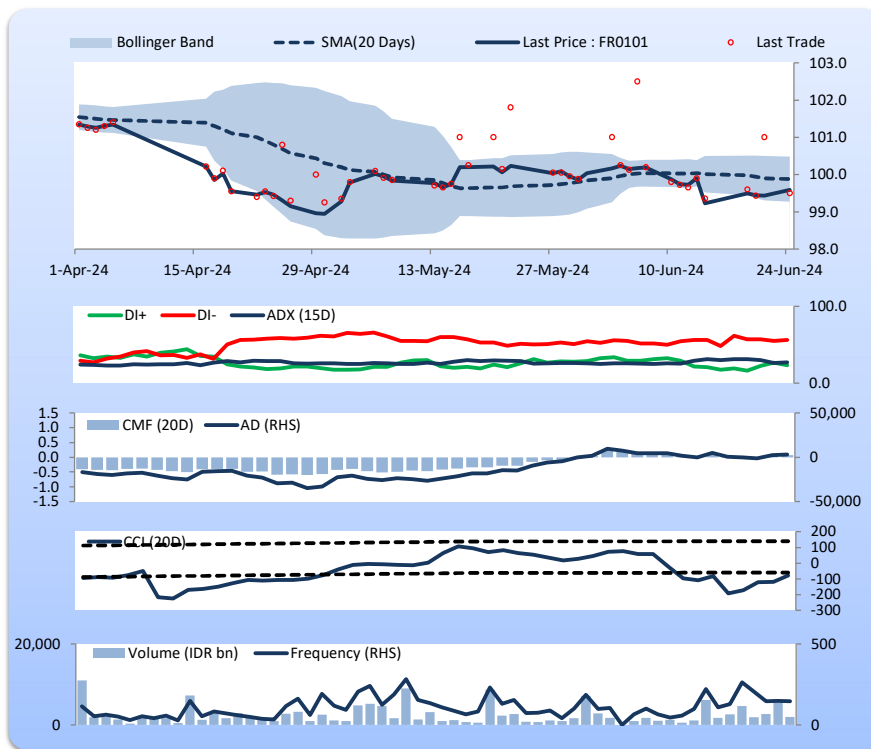
Price increased; heavy trade volume; downward trend continues to weaken; buying pressure increased; CCI increased.

BUY

FEATURES

Issue Date	2-Nov-23
Mature Date	15-Apr-29
Tenor	4.8
Coupon Rate	6.88
Last Yield	6.98
Modified Duration	3.98
Previous Coupon Date	15-Apr-24
Next Coupon Date	15-Oct-24

Sources: Bloomberg (Price); IDX



FR0100

INDICATORS	24-Jun-24	-1 Day	Change
Last Price	96.77	96.55	0.22
DI+	20.45	18.45	2.01
DI-	34.33	35.65	(1.32)
ADX (15D)	21.59	21.32	0.27
A/D	-6,210.60	-6,208.01	(2.59)
CMF(20D)	-0.100	-0.098	(0.00)
CCI	-91.07	-120.48	29.42
Volume (IDR bn)	1,116.32	3,556.06	(2,439.74)
Frequency	216	296	(80)

COMMENT

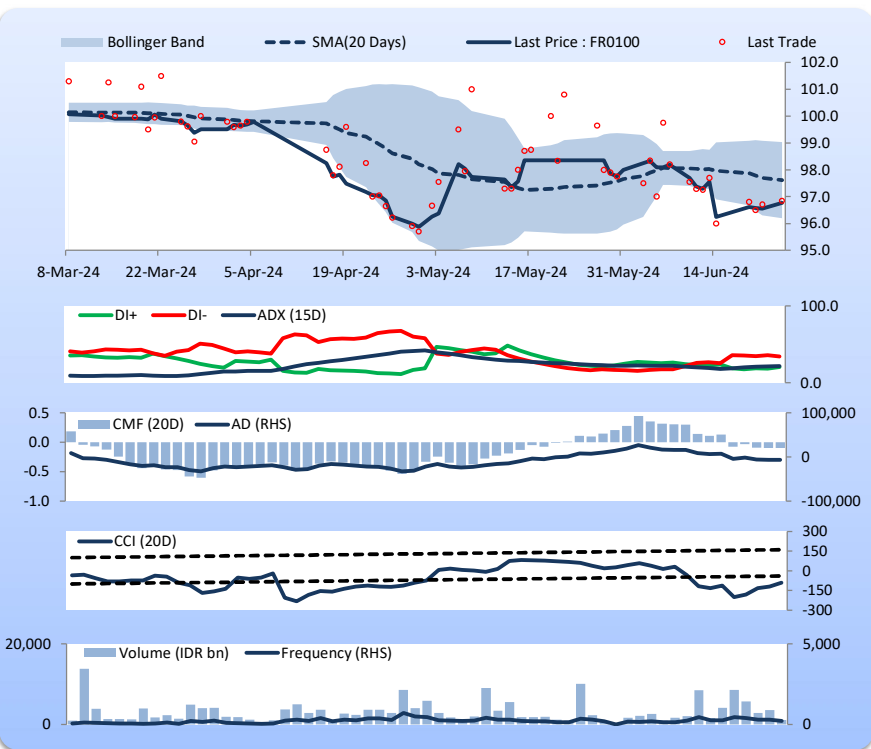
Price increased; heavy trade volume; upward trend continues to strengthen; selling pressure increased; CCI increased.

BUY

FEATURES

Issue Date	24-Aug-23
Mature Date	15-Feb-34
Tenor	9.6
Coupon Rate	6.63
Last Yield	7.09
Modified Duration	6.82
Previous Coupon Date	15-Feb-24
Next Coupon Date	15-Aug-24

Sources: Bloomberg (Price); IDX



FR0097

INDICATORS	24-Jun-24	-1 Day	Change
Last Price	99.85	99.77	0.08
DI+	23.31	22.57	0.74
DI-	35.96	37.44	(1.49)
ADX (15D)	15.36	14.32	1.04
A/D	-1,573.67	-1,335.44	(238.23)
CMF(20D)	-0.155	-0.132	(0.02)
CCI	-99.21	-122.38	23.17
Volume (IDR bn)	420.31	201.40	218.91
Frequency	141	299	(158)

COMMENT

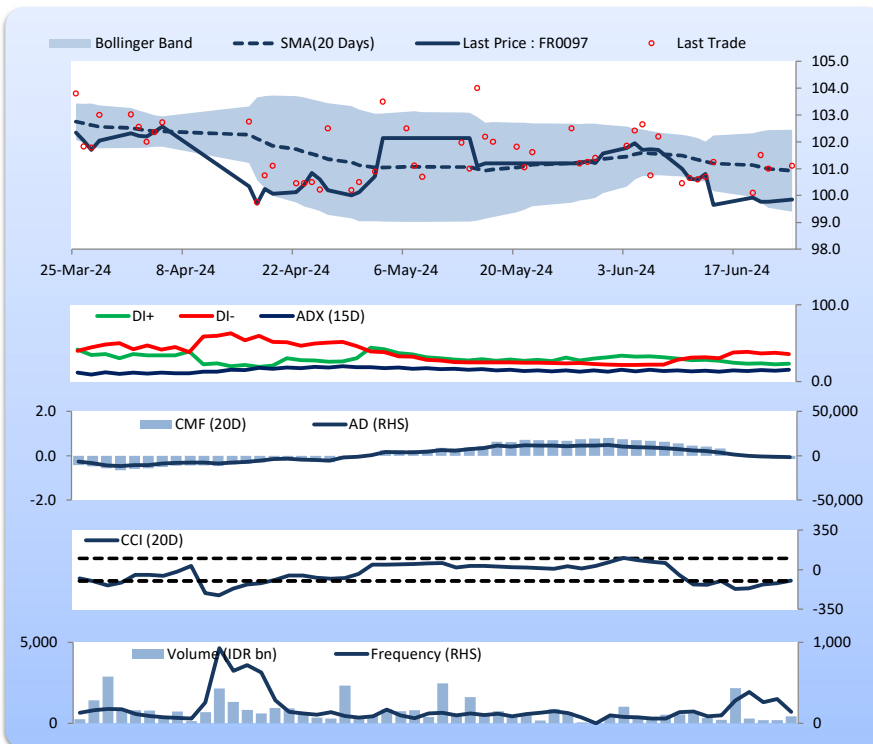
Price increased; moderate trade volume; upward trend continues to strengthen; selling pressure increased; CCI increased.

BUY

FEATURES

Issue Date	19-Aug-22
Mature Date	15-Jun-43
Tenor	19.0
Coupon Rate	7.13
Last Yield	7.14
Modified Duration	10.29
Previous Coupon Date	15-Jun-24
Next Coupon Date	15-Dec-24

Sources: Bloomberg (Price); IDX



FR0098

INDICATORS	24-Jun-24	-1 Day	Change
Last Price	99.77	99.73	0.05
DI+	18.15	18.59	(0.44)
DI-	49.16	50.36	(1.20)
ADX (15D)	27.02	25.66	1.36
A/D	-1,893.38	-2,447.63	554.26
CMF(20D)	-0.234	-0.298	0.06
CCI	-117.24	-133.62	16.38
Volume (IDR bn)	576.18	874.81	(298.63)
Frequency	182	262	(80)

COMMENT

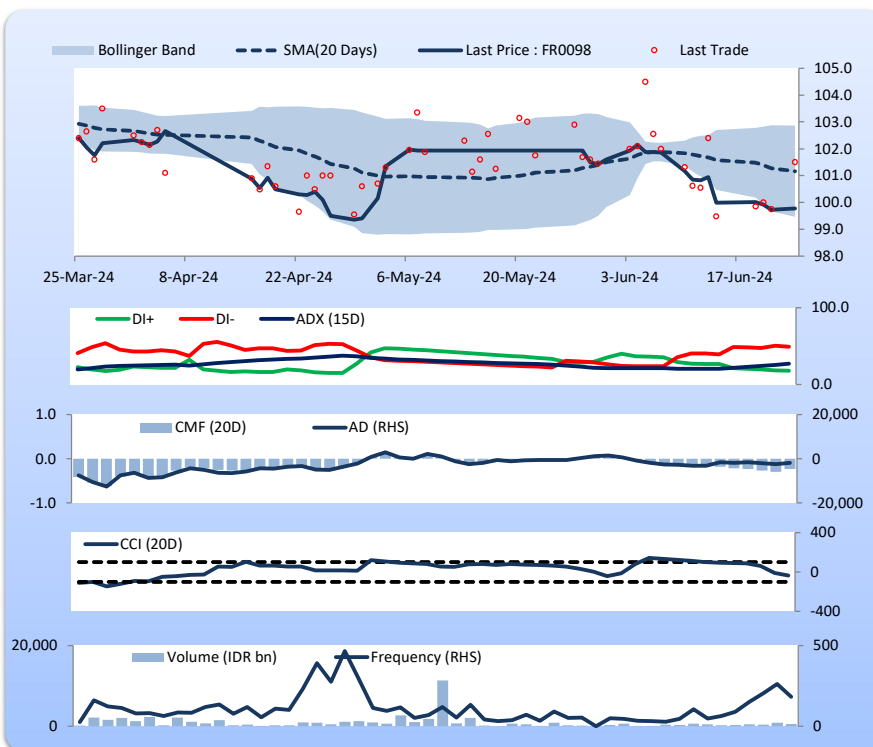
Price increased slightly; moderate trade volume; upward trend continues to strengthen; selling pressure eased; CCI increased.

BUY

FEATURES

Issue Date	15-Sep-22
Mature Date	15-Jun-38
Tenor (year)	14.0
Coupon Rate	7.13
Last Yield	7.15
Modified Duration	8.74
Previous Coupon Date	15-Jun-24
Next Coupon Date	15-Dec-24

Sources: Bloomberg (Price); IDX



Analysts: Laras Nerpatari & Eka Nuraini

DISCLAIMER: The information contained in this report has been taken from sources which we deem reliable. However, none of P.T. BRI Danareksa Sekuritas and/or its affiliated companies and/or their respective employees and/or agents makes any representation or warranty (express or implied) or accepts any responsibility or liability as to, or in relation to, the accuracy or completeness of the information and opinions contained in this report or as to any information contained in this report or any other such information or opinions remaining unchanged after the issue thereof. We expressly disclaim any responsibility or liability (express or implied) of P.T. BRI Danareksa Sekuritas, its affiliated companies and their respective employees and agents whatsoever and howsoever arising (including, without limitation for any claims, proceedings, action, suits, losses, expenses, damages or costs) which may be brought against or suffered by any person as a result of acting in reliance upon the whole or any part of the contents of this report and neither P.T. BRI Danareksa Sekuritas, its affiliated companies or their respective employees or agents accepts liability for any errors, omissions or mis-statements, negligent or otherwise, in the report and any liability in respect of the report or any inaccuracy therein or omission thereof which might otherwise arise is hereby expressly disclaimed. The information contained in this report is not to be taken as any recommendation made by P.T. BRI Danareksa Sekuritas or any other person to enter into any agreement with regard to any investment mentioned in this document. This report is prepared for general circulation. It does not have regards to the specific person who may receive this report. In considering any investments you should make your own independent assessment and seek your own professional financial and legal advice.