

MOST ACTIVE GOVERNMENT BONDS

Bond	Coupon	Maturity	Last Price	Yield	Volume (IDR bn)
FR0101	6.875	15-Apr-29	100.80	7.048	5,222.11
FR0100	6.625	15-Feb-34	96.65	7.074	3,642.66
FR0096	7.000	15-Feb-33	99.35	7.085	2,935.54
FR0087	6.500	15-Feb-31	96.60	7.084	1,328.73
FR0095	6.375	15-Aug-28	99.80	6.994	1,249.30
FR0081	6.500	15-Jun-25	99.57	6.928	1,163.57
FR0098	7.125	15-Jun-38	101.00	7.104	983.50
FR0086	5.500	15-Apr-26	97.34	6.553	895.96
PBS032	4.875	15-Jul-26	96.75	6.713	824.19
FR0097	7.125	15-Jun-43	100.22	7.059	604.90

Coupon, Last Price & Yield are in %; Volume is in IDR bn; Rating code: id(Pefindo) & idn (Fitch Indonesia)
Sources: Bloomberg; Indonesia Stock Exchange (Volume)

MOST ACTIVE CORPORATE BONDS

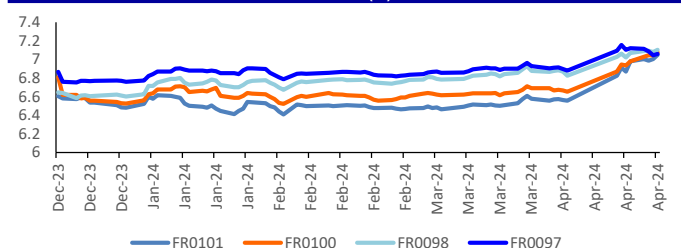
Bond	Rating	Coupon	Maturity	Last Price	Yield	Volume
SMMA03CN1	BBB+(idn)	10.000	5-Apr-29	100.32	9.92	472.80
LPPI01BCN2	idA	9.500	22-Apr-25	101.75	9.34	436.40
MDKA03BCN3	idA	8.250	1-Sep-25	103.30	5.69	203.90
SIBALI01CN2	A-(idn)	6.380	21-Oct-24	100.98	6.32	122.00
MFIN04BCN4	idA	9.250	3-Dec-24	102.50	9.02	100.00
OPPM03B	idA+	10.500	4-Nov-25	105.47	6.70	99.00
SMMA02CN4	BBB+(idn)	10.500	7-Mar-33	102.19	10.12	81.66
SMPPGD02CN3	idAAA(sy)	5.800	26-Jun-24	100.01	5.80	74.00
LPPI02ACN1	idA	10.500	4-Jul-26	101.46	9.75	48.00
OPPM01B	idA+	9.500	8-Jul-24	100.31	9.47	43.38

SOVEREIGN BOND YIELDS

Country	Tenor	Coupon (%)	25-Apr-24	MA LTM as of Mar	MA LTM as of Feb	Spread over UST YC (bps)		
			25-Apr-24	Mar	Feb			
United States	2yr		4.97	4.97	4.85			
USD	5yr		4.64	4.64	4.54			
	10yr		4.37	4.37	4.19			
German	2yr	0.25	2.95	2.85	2.90	-245	-255	-247
EUR	5yr	1.00	2.57	2.32	2.43	-207	-232	-211
	10yr	1.75	2.57	2.30	2.41	-180	-207	-178
Indonesia	2yr	4.13	-	-	-	-	-	-
USD	5yr	3.50	-	-	-	-	-	-
	10yr	3.85	-	-	-	-	-	-
Brazil	2yr	0.00	10.78	10.04	9.91	538	464	454
BRL	3yr	0.00	11.16	10.40	10.21	576	500	484
	10yr	10.00	11.66	11.10	10.86	626	570	549
Philippines	2yr	6.00	6.53	6.04	6.16	113	64	79
PHP	5yr	7.88	6.85	6.23	6.23	221	159	169
	10yr	11.38	6.88	6.21	6.22	251	184	203
Thailand	2yr	3.13	2.36	2.16	2.15	-304	-324	-322
THB	5yr	3.45	2.54	2.25	2.27	-210	-239	-227
	10yr	3.63	2.74	2.54	2.57	-163	-183	-162
India	2yr	7.59	7.16	7.04	7.03	176	164	166
INR	5yr	7.28	7.20	7.06	7.09	256	242	255
	10yr	8.83	7.20	7.05	7.08	283	268	289
Malaysia	3yr	3.17	3.65	3.51	3.52	-132	-146	-133
MYR	5yr	3.26	3.81	3.60	3.61	-83	-104	-93
	10yr	4.18	4.01	3.86	3.88	-36	-51	-31

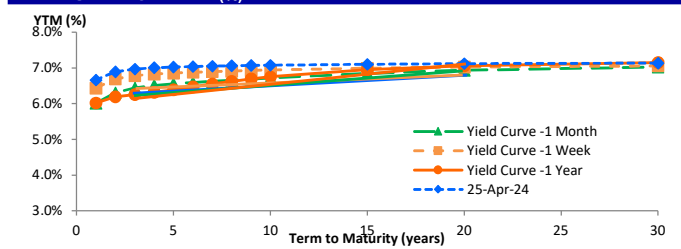
Sources: Bloomberg (Current Yield Curve), US Treasury

YIELD OF GOVERNMENT BOND BENCHMARK (%)



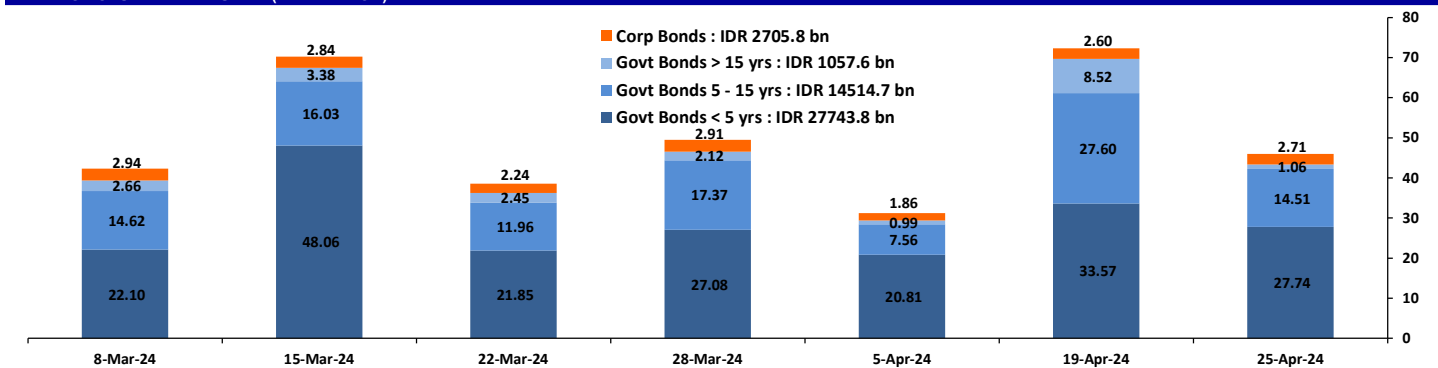
Source: DJPPR

YIELD CURVE MOVEMENT (%)



Source: Bloomberg

TRADING VOLUME BY MATURITY (IDR TRILLION)



Sources: Indonesia Stock Exchange

CURRENCY

Price	25-Apr-24	-1 Day	-1 Week	-1 Month	EoP2023
DXY	105.58 ↓	105.86	106.15	104.22	101.33
USD : IDR	16,188 ↑	16,154	16,175	15,798	15,397
EUR : USD	1.07 ↑	1.07	1.06	1.08	1.10
JPY : USD	155.66 ↑	155.35	154.64	151.42	141.04
USD : CNY	7.247 ↑	7.246	7.239	7.211	7.100
USD : SGD	4.778 ↑	4.777	4.786	4.724	4.594
SGD : IDR	11,908 ↑	11,870	11,903	11,735	11,677

Source : Bloomberg

COMMODITY

Price	25-Apr-24	-1 Day	-1 Week	-1 Month	EoP2023
CPO	3,946 ↓	4,040	4,125	4,352	3,662
Coal	129.00 →	129.00	129.60	128.95	146.40
Gold	2,327 ↑	2,316	2,379	2,172	2,063
Nickel	18,840 →	18,840	18,439	16,774	16,435
Copper	453.05 ↑	445.75	443.65	400.70	389.05
Brent	88.84 ↑	88.55	88.01	86.36	77.60
Metal	2,326.51 ↑	2,316.17	2,379.04	2,171.83	2,062.98

PHEI FAIR SPREAD

	1Y	2Y	3Y	4Y	5Y	6Y	7Y	8Y	9Y	10Y
AAA	60	61	62	64	68	71	75	77	80	81
AA+	75	81	87	96	105	113	121	126	131	133
AA	98	111	122	135	148	160	170	178	183	187
AA-	135	158	173	188	203	216	226	233	239	243
A+	183	216	235	250	265	277	287	294	299	302
A	238	277	297	314	329	341	352	359	365	368
A-	294	333	354	372	390	406	419	429	437	442
BBB+	351	385	405	427	449	470	488	502	513	520
BBB	408	435	454	479	507	534	558	577	591	602

*interpolated, as of April 25, 2024 (bps)

SBN HOLDING - (IDR tn)

	24-Apr-2024	WoW	MtD	YTD
Banks	1,365.5	29.7	(48.4)	(129.7)
Bank Indonesia (exclude repo)	1,266.1	(25.4)	47.7	170.6
Non-Banks:	3,094.1	17.1	16.7	45.6
Mutual Fund	178.3	0.2	(0.0)	0.5
Insurance & Pension Fund	1,065.4	2.9	4.0	24.0
Foreign Investor	793.8	(10.7)	(16.9)	(48.2)
Individual	481.1	23.2	27.3	45.8
Others	575.5	1.5	2.3	23.6
Total	5,725.7	21.4	15.9	86.5
Domestic Investor	3,665.7	57.5	(14.9)	(35.9)
Foreign Investor	793.8	(10.7)	(16.9)	(48.2)
Bank Indonesia (include repo)	1,405.1	0.3	3.7	41.2

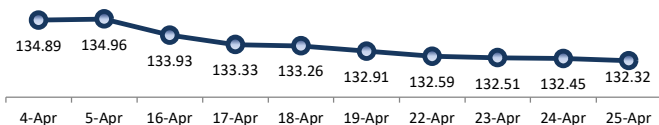
Source : DJPPR (Processed)

Sources : PHEI, Bloomberg

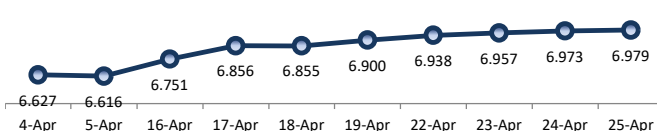
VALUATIONS OF GOVERNMENT BONDS

Bond	Issue Date	Mature Date	Coupon	TTM	Modified Duration	YTM	(Change)	Prev Closing Price	Fair Yield Range	Fair Price Range	Last Trade					
											Date	Price	Vol (IDR bn)	Freq		
FR0044	19-Apr-07	15-Sep-24	10.00	0.4	0.38	6.05	↓ -3.7bps	101.43	5.944	6.296	101.38	101.52	24-Apr-24	101.45	60.00	2
FR0081	1-Aug-19	15-Jun-25	6.50	1.1	1.06	6.93	↓ -1.1bps	99.53	6.801	7.068	99.38	99.66	25-Apr-24	99.57	1,163.57	215
FR0040	21-Sep-06	15-Sep-25	11.00	1.4	1.28	6.03	↓ -2.9bps	106.46	6.321	6.673	105.63	106.11	25-Apr-24	107.09	0.06	20
FR0084	4-May-20	15-Feb-26	7.25	1.8	1.65	6.92	↑ 13.0bps	100.54	6.574	6.926	100.53	101.12	4-Apr-24	101.60	15.74	2
FR0086	13-Aug-20	15-Apr-26	5.50	2.0	1.83	6.55	↑ 4.5bps	98.09	6.662	7.014	97.25	97.88	25-Apr-24	97.34	895.96	253
FR0037	18-May-06	15-Sep-26	12.00	2.4	2.07	6.33	↓ -11.8bps	112.33	6.480	6.832	111.20	112.02	22-Apr-24	111.68	40.00	4
FR0056	23-Sep-10	15-Sep-26	8.38	2.4	2.12	6.97	↑ 4.2bps	103.03	6.877	7.055	102.84	103.24	25-Apr-24	103.05	391.33	43
FR0090	8-Jul-21	15-Apr-27	5.13	3.0	2.69	6.93	↑ 2.0bps	95.24	6.745	7.097	94.79	95.70	25-Apr-24	94.75	12.31	31
FR0059	15-Sep-11	15-May-27	7.00	3.1	2.63	6.97	↑ 2.1bps	100.07	6.893	7.106	99.71	100.28	25-Apr-24	100.15	340.35	64
FR0042	25-Jan-07	15-Jul-27	10.25	3.2	2.68	7.00	↑ 5.0bps	109.20	7.015	7.368	108.11	109.16	25-Apr-24	112.75	0.02	6
FR0094	4-Mar-22	15-Jan-28	5.60	3.7	3.25	6.66	↑ 5.0bps	96.57	6.745	7.097	95.16	96.27	16-Oct-23	95.70	0.53	1
FR0047	30-Aug-07	15-Feb-28	10.00	3.8	3.13	6.70	↓ -0.7bps	110.89	6.723	7.075	109.60	110.83	1-Apr-24	111.99	360.00	6
FR0064	13-Aug-12	15-May-28	6.13	4.1	3.42	7.05	↑ 6.1bps	96.80	6.973	7.087	96.66	97.04	25-Apr-24	96.60	595.02	75
FR0095	19-Aug-22	15-Aug-28	6.38	4.3	3.65	6.99	↑ 0.3bps	97.72	6.907	7.090	97.37	98.03	25-Apr-24	99.80	1,249.30	54
FR0099	27-Jan-23	15-Jan-29	6.40	4.7	3.95	6.62	↑ 3.7bps	99.11	6.706	7.058	97.38	98.76	25-Sep-23	99.77	139.50	19
FR0071	12-Sep-13	15-Mar-29	9.00	4.9	3.92	7.03	↑ 5.0bps	108.02	6.981	7.104	107.87	108.23	25-Apr-24	108.10	244.30	16
FR1011	2-Nov-23	15-Apr-29	6.88	5.0	4.14	7.05	↑ 4.4bps	99.28	6.988	7.120	98.99	99.53	25-Apr-24	100.80	5,222.11	240
FR0078	27-Sep-18	15-May-29	8.25	5.1	3.98	7.04	↑ 2.7bps	105.08	6.984	7.075	104.91	105.31	25-Apr-24	106.50	238.85	51
FR0052	20-Aug-09	15-Aug-30	10.50	6.3	4.66	6.96	→ 0.0bps	117.80	6.788	7.140	116.80	118.77	22-Apr-24	118.50	0.04	1
FR0082	1-Aug-19	15-Sep-30	7.00	6.4	5.05	6.98	↓ -0.2bps	100.11	6.990	7.087	99.55	100.04	25-Apr-24	99.65	284.26	55
FR0087	13-Aug-20	15-Feb-31	6.50	6.8	5.33	7.08	↑ 5.5bps	96.88	7.000	7.115	96.71	97.32	25-Apr-24	96.60	1,328.73	117
FR0085	4-May-20	15-Apr-31	7.75	7.0	5.36	6.81	↓ -1.8bps	105.15	6.825	7.126	103.38	105.06	23-Apr-24	104.90	0.50	1
FR0073	6-Aug-15	15-May-31	8.75	7.1	5.13	7.00	↓ -0.9bps	109.57	6.973	7.146	108.76	109.76	25-Apr-24	108.90	204.20	6
FR0054	22-Jul-10	15-Jul-31	9.50	7.2	5.21	7.01	↑ 0.8bps	113.89	6.931	7.107	113.32	114.39	25-Apr-24	114.75	0.60	18
FR0091	8-Jul-21	15-Apr-32	6.38	8.0	6.11	7.02	↑ 5.0bps	96.11	6.979	7.108	95.59	96.35	25-Apr-24	99.50	363.94	158
FR0058	21-Jul-11	15-Jun-32	8.25	8.1	5.81	6.94	↓ -3.3bps	108.00	6.806	7.158	106.64	108.90	25-Apr-24	109.50	0.70	2
FR0074	10-Nov-16	15-Aug-32	7.50	8.3	6.06	7.07	↑ 0.4bps	102.68	7.010	7.110	102.40	103.03	25-Apr-24	103.50	12.05	8
FR0096	19-Aug-22	15-Feb-33	7.00	8.8	6.40	7.09	↑ 2.8bps	99.43	7.007	7.124	99.19	99.94	25-Apr-24	99.35	2,935.54	261
FR0065	30-Aug-12	15-May-33	6.63	9.1	6.49	7.01	↓ -5.0bps	97.46	6.995	7.097	96.88	97.55	25-Apr-24	98.65	354.35	127
FR1010	25-Aug-23	15-Feb-34	6.63	9.8	6.98	7.07	↑ 2.8bps	96.85	6.986	7.111	96.59	97.45	25-Apr-24	96.65	3,642.66	382
FR0068	1-Aug-13	15-Mar-34	8.38	9.9	6.76	7.07	↑ 2.7bps	109.18	6.978	7.126	108.75	109.85	25-Apr-24	109.75	308.87	47
FR0080	4-Jul-19	15-Jun-35	7.50	11.1	7.34	7.08	↑ 0.8bps	103.16	7.036	7.133	102.78	103.53	25-Apr-24	102.70	252.54	28
FR0072	9-Jul-15	15-May-36	8.25	12.1	7.52	7.14	↑ 0.8bps	108.90	7.051	7.194	108.41	109.62	25-Apr-24	109.86	402.32	34
FR0088	7-Jan-21	15-Jun-36	6.25	12.1	8.05	7.13	↑ 5.3bps	92.93	6.815	7.145	92.81	95.37	25-Apr-24	96.75	65.09	28
FR0045	24-May-07	15-May-37	9.75	13.1	7.69	6.88	↑ 0.3bps	124.50	6.891	7.187	121.46	124.35	7-Mar-24	125.15	4.00	4
FR0093	6-Jan-22	15-Jul-37	6.38	13.2	8.58	6.85	→ 0.0bps	95.92	6.818	7.006	94.61	96.16	25-Apr-24	94.50	12.29	21
FR0075	10-Aug-17	15-May-38	7.50	14.1	8.42	7.15	↑ 1.8bps	103.08	7.040	7.211	102.52	104.05	25-Apr-24	103.40	344.71	38
FR0098	15-Sep-22	15-Jun-38	7.13	14.1	8.61	7.10	↑ 2.5bps	100.17	7.083	7.213	99.21	100.36	25-Apr-24	101.00	983.50	231
FR0050	24-Jan-08	15-Jul-38	10.50	14.2	8.00	7.06	↑ 1.5bps	130.58	6.995	7.235	128.68	130.24	17-Apr-24	129.60	1.00	1
FR0079	7-Jan-19	15-Apr-39	8.38	15.0	8.80	7.14	↓ -0.3bps	111.24	7.055	7.213	110.53	112.08	25-Apr-24	112.20	94.04	32
FR0083	7-Nov-19	15-Apr-40	7.50	16.0	9.32	7.17	↑ 1.4bps	103.14	7.119	7.187	102.94	103.59	25-Apr-24	101.70	104.22	62
FR0057	21-Apr-11	15-May-41	9.50	17.1	9.01	6.93	↓ -7.4bps	125.47	6.991	7.189	122.50	124.76	17-Apr-24	126.14	0.50	1
FR0062	9-Feb-12	15-Apr-42	6.38	18.0	10.24	7.19	↓ -0.1bps	91.90	6.974	7.326	90.58	93.91	25-Apr-24	96.50	17.33	13
FR0092	8-Jul-21	15-Jun-42	7.13	18.1	9.84	7.14	↑ 2.9bps	99.84	7.036	7.239	98.85	100.89	25-Apr-24	101.00	76.65	54
FR0097	19-Aug-22	15-Jun-43	7.13	19.1	10.14	7.06	↑ 1.6bps	100.67	7.030	7.246	98.75	100.98	25-Apr-24	100.22	604.90	122
FR0067	18-Jul-13	15-Feb-44	8.75	19.8	9.97	7.12	↓ -0.3bps	117.20	7.056	7.200	116.20	117.91	19-Apr-24	116.00	0.80	2
FR0076	22-Sep-17	15-May-48	7.38	24.1	11.01	7.13	↑ 0.3bps	102.85	7.076	7.163	102.41	103.43	25-Apr-24	102.50	5.49	22
FR0089	7-Jan-21	15-Aug-51	6.88	27.3	11.92	7.08	↑ 0.8bps	97.49	7.042	7.145	96.76	97.98	25-Apr-24	100.00	112.10	92
ORI020	27-Oct-21	15-Oct-24	4.95	0.5	-	6.57	↓ -0.3bps	99.27	6.592	6.944	99.08	99.24	25-Apr-24	100.15	5.06	63
ORI021	23-Feb-22	15-Feb-25	4.90	0.8	-	6.10	↓ -0.3bps	99.08	6.301	6.653	98.63	98.90	25-Apr-24	99.75	39.14	62
ORI022	26-Oct-22	15-Oct-25	5.95	1.5	-	6.42	↓ -0.3bps	99.34	6.675	7.027	98.50	98.99	25-Apr-24	99.60	9.51	41
IFR0007	21-Jan-10	15-Jan-25	10.25	0.7	0.68	6.43	↑ 3.4bps	102.60	6.516	6.868	102.32	102.57	27-Jan-22	115.88	30.00	3
PBS036	25-Aug-22	15-Aug-25	5.38	1.3	1.23	6.67	↑ 7.8bps	98.41	6.760	7.112	97.86	98.28	25-Apr-24	100.00	46.96	115
PBS017	11-Jan-18	15-Oct-25	6.13	1.5	1.38	6.44	↑ 0.3bps	99.56	6.751	7.103	98.65	99.13	25-Apr-24	100.00	0.10	2
PBS032	29-Jul-21	15-Jul-26	4.88	2.2	2.04	6.71	↑ 0.6bps	96.27	6.878	7.230	95.23	95.93	25-Apr-24	96.75	824.19	68
PBS021	5-Dec-18	15-Nov-26	8.50	2.6	2.20	6.54	↓ -0.9bps	104.53	6.804	7.156	103.08	103.91	15-Mar-24	106.00	0.08	1
PBS003	2-Feb-12	15-Jan-27	6.00	2.7	2.43	6.42	↓ -1.8bps	98.95	6.688	7.040	97.45	98.30	25-Apr-24	97.50	1.45	20
PBS020	22-Oct-18	15-Oct-27	9.00	3.5	2.97	6.61	↓ -0.6bps	107.27	6.854	7.206	105.42	106.53	24-Jul-19	107.12	1,200.00	2
PBS018	4-Jun-18	15-May-28	7.63	4.1	3.35	6.57	↓ -2.7bps	103.69	6.767	7.119	101.75	102.99	3-Sep-19	99.29	2,000.00	2
PBS030	4-Jun-21	15-Jul-28	5.88	4.2	3.61	6.65	→ 0.0bps	97.20	6.787	7.139	95.45	96.69	25-Apr-24	98.00	11.10	3
PBSG001	22-Sep-22	15-Sep-29	6.63	5.4	4.44	6.59	↓ -2.5bps	100.14	6.789	7.141	97.72	99.26	25-Apr-24	99.70	20.00	2
PBS023	15-May-19	15-May-30	6.63	6.1	4.78	6.62	↓ -2.4bps	107.40	6.802	7.154	97.43	99.13	18-Mar-24	108.70	0.50	1
PBS012	28-Jan-16	15-Nov-31	8.88	7.6	5.42	6.58	↓ -1.6bps	113.49	6.711	7.063	110.46	112.66	23-Apr-24	112.00	62.55	6
PBS024	28-May-19	15-May-32	8.38	8.1	5.74	6.62	↓ -1.4bps	110.80	6.751	7.103	107.69	109.96	20-Dec-22	94.07	15.00	22
PBS025	29-May-19	15-May-33	8.38	9.1	6.25	6.68	↓ -0.8bps	111.39	6.784	7.136	108.16	110.63	1-Apr-24	112.90	0.10	1
PBS029	14-Jan-21	15-Mar-34	6.38	9.9	7.17	6.64	↑ 0.4bps	98.10	6.683	7.035	95.35	97.79	25-Apr-24	98.50	1.95	5
PBS022	24-Jan-19	15-Apr-34	8.63	10.0	6.85	6.73	↓ -0.4bps	113.58	6.819	7.172						

PRICE INDEX



YIELD INDEX



TECHNICAL ANALYSIS

FR0101

INDICATORS	25-Apr-24	-1 Day	Change
Last Price	99.28	99.46	(0.18)
DI+	19.47	21.51	(2.04)
DI-	61.68	59.17	2.51
ADX (15D)	25.88	25.32	0.56
A/D	-23,837.71	-20,962.46	(2,875.25)
CMF(20D)	-0.503	-0.493	(0.01)
CCI	-110.67	-106.83	(3.83)
Volume (IDR bn)	5,222.11	4,824.16	397.95
Frequency	240	205	35

COMMENT

Price declined; heavy trade volume; downward trend continues to weaken; selling pressure increased; CCI declined.

SELL

FEATURES

Issue Date	2-Nov-23
Mature Date	15-Apr-29
Tenor	5.0
Coupon Rate	6.88
Last Yield	7.05
Modified Duration	4.14
Previous Coupon Date	15-Apr-24
Next Coupon Date	15-Oct-24

Sources: Bloomberg (Price); IDX



FR0100

INDICATORS	25-Apr-24	-1 Day	Change
Last Price	96.85	97.04	(0.19)
DI+	14.69	15.48	(0.79)
DI-	58.60	57.18	1.41
ADX (15D)	33.50	31.62	1.89
A/D	-22,010.38	-19,500.91	(2,509.47)
CMF(20D)	-0.407	-0.377	(0.03)
CCI	-111.81	-120.27	8.46
Volume (IDR bn)	3,642.66	2,405.93	1,236.73
Frequency	382	268	114

COMMENT

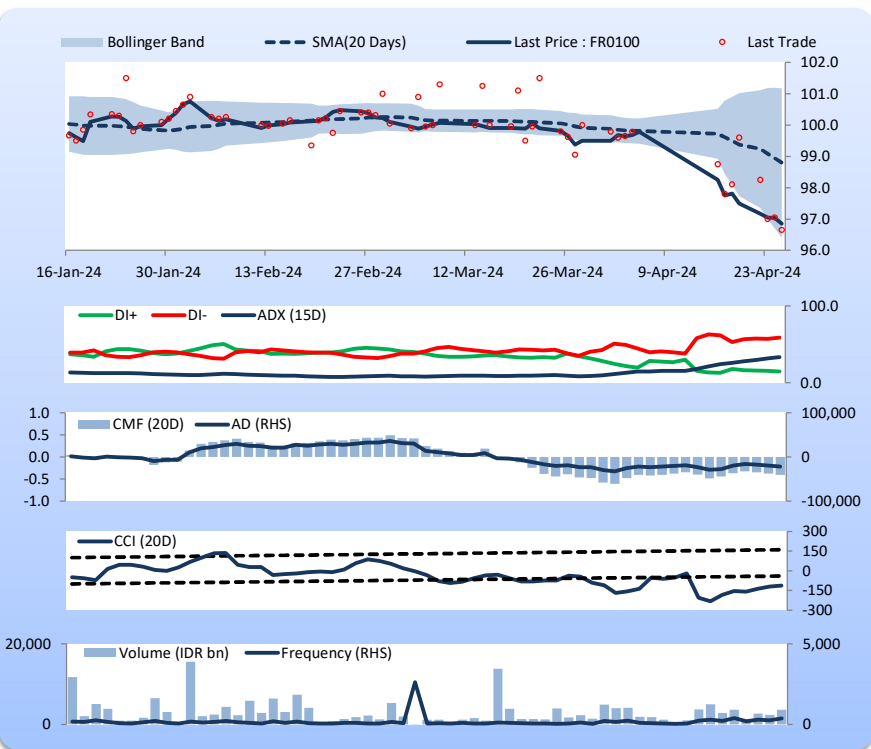
Price declined; heavy trade volume; downward trend continues to strengthen; selling pressure increased; CCI increased.

SELL

FEATURES

Issue Date	24-Aug-23
Mature Date	15-Feb-34
Tenor	9.8
Coupon Rate	6.63
Last Yield	7.07
Modified Duration	6.98
Previous Coupon Date	15-Feb-24
Next Coupon Date	15-Aug-24

Sources: Bloomberg (Price); IDX



Friday, April 26, 2024

DEBT RESEARCH

FR0097

INDICATORS	25-Apr-24	-1 Day	Change
Last Price	100.67	100.84	(0.16)
DI+	27.78	30.38	(2.60)
DI-	46.86	51.24	(4.38)
ADX (15D)	17.33	18.36	(1.03)
A/D	-4,330.89	-3,474.40	(856.49)
CMF(20D)	-0.230	-0.188	(0.04)
CCI	-47.79	-53.88	6.09
Volume (IDR bn)	604.90	925.00	(320.10)
Frequency	122	145	(23)

COMMENT

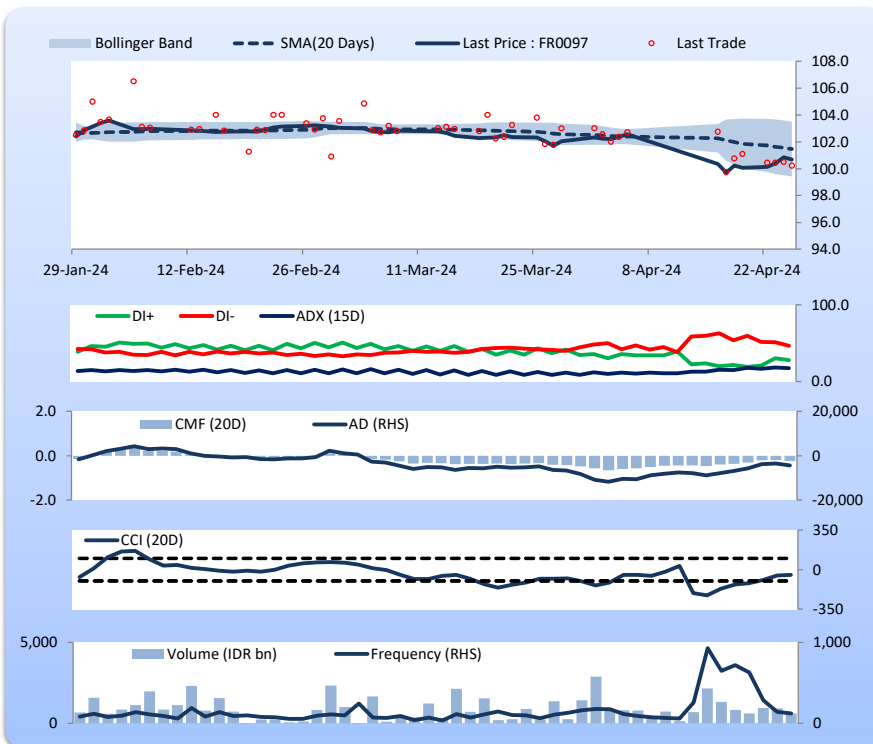
Price declined; moderate trade volume; upward trend continues to weaken; selling pressure increased; CCI increased.

SELL

FEATURES

Issue Date	19-Aug-22
Mature Date	15-Jun-43
Tenor	19.1
Coupon Rate	7.13
Last Yield	7.06
Modified Duration	10.14
Previous Coupon Date	15-Dec-23
Next Coupon Date	15-Jun-24

Sources: Bloomberg (Price); IDX



FR0098

INDICATORS	25-Apr-24	-1 Day	Change
Last Price	100.17	100.39	(0.22)
DI+	18.55	19.60	(1.05)
DI-	43.61	43.90	(0.28)
ADX (15D)	33.74	33.27	0.47
A/D	-3,317.73	-3,562.43	244.70
CMF(20D)	-0.170	-0.181	0.01
CCI	-101.71	-102.91	1.20
Volume (IDR bn)	983.50	295.97	687.53
Frequency	231	101	130

COMMENT

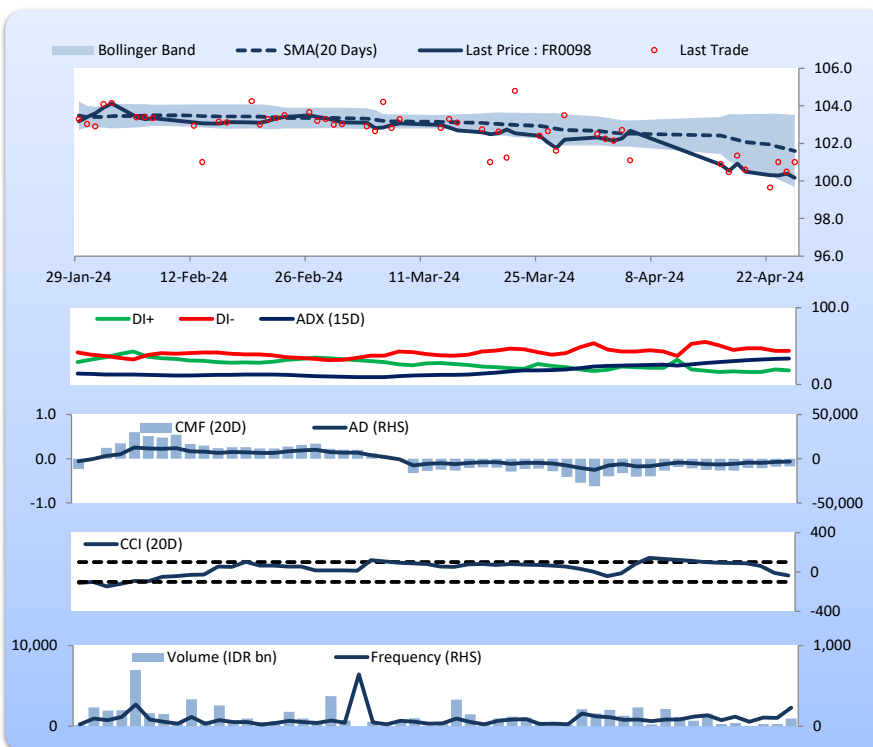
Price declined; heavy trade volume; downward trend continues to strengthen; selling pressure eased; CCI increased.

SELL

FEATURES

Issue Date	15-Sep-22
Mature Date	15-Jun-38
Tenor (year)	14.1
Coupon Rate	7.13
Last Yield	7.10
Modified Duration	8.61
Previous Coupon Date	15-Dec-23
Next Coupon Date	15-Jun-24

Sources: Bloomberg (Price); IDX



Analysts: Laras Nerpatari & Eka Nuraini

DISCLAIMER: The information contained in this report has been taken from sources which we deem reliable. However, none of P.T. BRI Danareksa Sekuritas and/or its affiliated companies and/or their respective employees and/or agents makes any representation or warranty (express or implied) or accepts any responsibility or liability as to, or in relation to, the accuracy or completeness of the information and opinions contained in this report or as to any information or opinions remaining unchanged after the issue thereof. We expressly disclaim any responsibility or liability (express or implied) of P.T. BRI Danareksa Sekuritas, its affiliated companies and their respective employees and agents whatsoever and howsoever arising (including, without limitation for any claims, proceedings, action, suits, losses, expenses, damages or costs) which may be brought against or suffered by any person as a result of acting in reliance upon the whole or any part of the contents of this report and neither P.T. BRI Danareksa Sekuritas, its affiliated companies or their respective employees or agents accepts liability for any errors, omissions or mis-statements, negligent or otherwise, in the report and any liability in respect of the report or any inaccuracy therein or omission therefrom which might otherwise arise is hereby expressly disclaimed. The information contained in this report is not to be taken as any recommendation made by P.T. BRI Danareksa Sekuritas or any other person to enter into any agreement with regard to any investment mentioned in this document. This report is prepared for general circulation. It does not have regards to the specific person who may receive this report. In considering any investments you should make your own independent assessment and seek your own professional financial and legal advice.