



SAPA MENTARI



Sajian Pagi Menu Trading dari BRI Danareksa Sekuritas

Senin, 1 April 2024



TOPIC:

- **PERGERAKAN IHSG**
- **NEWS UPDATE**
- **TRADING IDEAS**
- **SPOTLIGHT BBRI**



KEY INDEX PERFORMANCE

	PRICE	CHANGE	%CHANGE
IDX	7,288.81	-21.28	-0.29%
US MARKET			
Dow	39,807.37	+47.29	+0.12%
S&P 500	5,254.35	+5.86	+0.11%
Nasdaq	16,379.46	-20.06	-0.12%
VIX	13.01	+0.00	+0.00%
EUROPE			
DAX	18,504.51	+27.42	+0.15%
FTSE 100	7,952.62	+20.64	+0.26%
CAC 40	8,205.81	+1.00	+0.01%
ASIA			
Nikkei 225	40,369.44	+201.37	+0.50%
Hang Seng	16,541.42	0.00	0.00%
Shanghai	3,041.17	+30.50	+1.01%
STI Index	3,224.01	-27.70	-0.85%



FOKUS HARI INI

- Siloam Hospitals (SILO IJ Rp 2.360; BELI; TP Rp2.900) FY24 Outlook
- Tumbuh 21 Persen, Penjualan Erajaya (ERAA) 2023 Tembus Rp60 Triliun

MARKET UPDATE

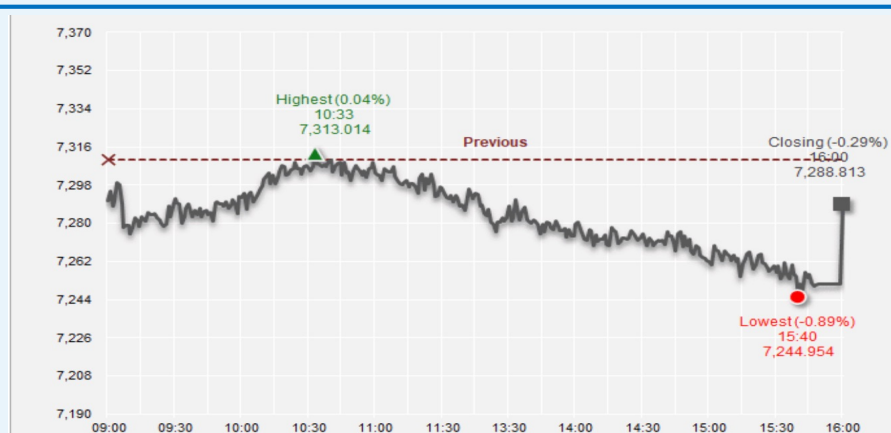
IHSG - IHSG melemah sebesar -21.279 poin atau turun sebesar -0.25% dan ditutup di 7.288,813. Sebanyak 466 saham turun, 285 saham tidak berubah, dan 173 saham naik.

US Market – Dow Jones Industrial Average ditutup menguat +0.12% ke level 39.807,37 Indeks S&P 500 ditutup menguat +0.11% ke level 5.254,35 dan Nasdaq melemah -0.12% ke level 16.379,46.

COMMODITY

	PRICE	CHANGE	%CHANGE
Oil (Brent)	86.99	+0.04	+0.05%
Oil (WTI)	83.11	+1.76	+2.16%
Coal	132.00	+0.90	+0.69%
Gold	2,253.85	-0.95	-0.04%
Palm Oil	4,325.00	+69.00	+1.62%
Nickel	16,682.50	+62.50	+0.38%
Silver	25.098	-0.002	-0.01%
Copper	4.0118	+0.0003	+0.01%
Tin	27,451.00	-73.00	-0.27%

IDX STATISTIC



Source : Grafik Intraday IDX

CURRENCY AND BOND YIELD

	PRICE	CHANGE	%CHANGE
USIDR	15,880.1	+0.1	+0.00%
USDJPY	151.30	-0.05	-0.03%
EURUSD	1.0795	+0.0004	+0.04%
GBP/USD	1.2631	+0.0009	+0.07%
ID10YR	6.791	+0.060	+0.89%
US10YR	4.210	+0.012	+0.29%

Market Cap	Value	Volume (Mill Shares)	Net Foreign Buy/Sell (ALL)
11,729 T	12,066 T	15,593 B	390,51 B

Top Foreign 1D				Top Foreign MTD			
Net Buy		Net Sell		Net Buy		Net Sell	
AMRT	137.6 B	TLKM	-381.8 B	AMRT	745.5 B	TLKM	-1.7 T
GOTO	62.7 B	ASII	-176.8 B	TPIA	500.4 B	BBCA	-694.8 B
AMMN	38.9 B	BMRI	-132.2 B	BBRI	412.3 B	MDKA	-453.8 B
PGAS	33.0 B	BBCA	-71.3 B	BRIS	384.5 B	BBNI	-236.1 B
BBNI	29.5 B	UNTR	-50.1 B	BMRI	330.8 B	MBMA	-176.6 B

Siloam Hospitals (SILO IJ Rp 2.360; BELI; TP Rp2.900) FY24 Outlook.

- SILO melaporkan laba bersih FY23 yang solid sebesar Rp1,21 triliun (+73,9% yoy), yang menunjukkan inisiatif penghematan biaya dan intensitas pendapatan yang lebih tinggi.
- Kami yakin upaya SILO dalam mendorong intensitas dan penghematan biaya akan terus mendorong pertumbuhan. Kami meningkatkan perkiraan laba bersih FY24/25F sebesar +2/+5%.
- Kami mempertahankan peringkat Beli kami dengan TP tidak berubah sebesar Rp2.900 karena pertumbuhan EPS FY24-25F yang masih menarik sebesar 13-21% dan penilaian yang tidak menuntut.

Full Report : [Klik disini](#)

Jasa Marga (JSMR) Siap Panen Pendapatan Tol

- Erajaya Swasembada (ERAA) sepanjang 2023 mengemas laba bersih Rp826,04 miliar. Terpangkas 18,81 persen dari posisi sama tahun sebelumnya senilai Rp1,01 triliun.
- Laba per saham dasar turun ke level Rp52,34 dari posisi sama tahun sebelumnya Rp63,87.
- Penjualan bersih Rp60,13 triliun, melesat 21 persen dari periode sama tahun sebelumnya Rp49,47 triliun.
- Beban pokok penjualan Rp53,69 triliun, membengkak dari Rp44,10 triliun.
- Laba kotor terakumulasi sebesar Rp6,44 triliun, melonjak 20 persen dari episode sama tahun sebelumnya Rp5,36 triliun. .

Full Report : [Klik disini](#)

CORPORATE ACTION

1. RUPS

ADHI	BNII
ARKO	HAIS

2. Dividend

- BTPN
(Setiap 1 saham akan memperoleh Rp 44,304837942)



IPO

IPO Pooling

- PT Multi Hanna Kreasindo Tbk (MHKI)**
Sector : Industrials
Price Range : Rp 160 – Rp 200



TECHNICAL REVIEW : IHSG



TradingView

Last Price : 7,288 Support : 7,238 Resistance : 7,400

IHSG kembali mengalami koreksi dan mulai menguji support MA 60. Trend mulai sideways dan berpotensi memasuki bearish trend jika IHSG kembali turun di bawah support 7238.

DAILY STOCKPICK

Kode	Action	Harga Penutupan	Target Harga	Stop Loss	Ket.
KLBF	BUY	1475	1540 – 1600	1405	Swing Trade
MAPI	BUY	1820	1870 – 1925	1775	DayTrade
HEAL	SELL	1175	1145	-	-
SCMA	SELL	141	138	-	-



TECHNICAL REVIEW : KLBF – BUY



Last Price : 1475

SWING TRADE	
TP	1540
	1600
BUY	1450-1475
SL	1405

KLBF > trend bearish, harga sempat membentuk higher high dan mengalami koreksi menguji demand zone. Ada potensi harga Kembali menguat ke area resisten 1540, 1600. Batasi kerugian jika harga turun di bawah support 1405.

TECHNICAL REVIEW : MAPI – BUY



Last Price : 1820

DAY TRADE	
TP	1875
	1925
BUY	1810-1820
SL	1775

MAPI > trend sideways, posisi harga berada di demand zone dan berpotensi memantul dari demand zone. Batasi kerugian jika harga turun di bawah support 1775.



TECHNICAL REVIEW : HEAL – BUY



Last Price : 1175

	-
TP	-
BUY	-
SL	-

HEAL > trend bearish, harga sudah menembus support 1220 dan berpotensi melanjutkan bearish trend ke area support berikutnya di 1445.

TECHNICAL REVIEW : SCMA – SELL



Last Price : 141

	-
TP	-
BUY	-
SL	-

SCMA > trend sideways, harga mulai menembus support 142 dan berpotensi melanjutkan penurunan ke area support berikutnya di 138. Waspadaai penurunan lebih dalam jika harga turun di bawah support 138.

SWING TRADE								
Date	Code	Action	Call Price	Last Price	Target Price	Stop Loss	Profit/Loss (%)	Remarks
29-02-2024	ADHI	BUY	300	292	316-326	282	-2.67%	Sudah mencapai TP 1, TP partial, sisanya HOLD
5-Mar-24	ITMG	BUY	26800	26700	27850-29600	25750	-0.37%	Sudah mencapai TP 1, TP partial, sisanya HOLD
8-Mar-24	JSMR	BUY	5250	5550	5500-5750	4990	5.71%	Sudah mencapai TP 1, TP partial, sisanya HOLD
8-Mar-24	TKIM	BUY	6875	7125	7150-7500	6525	3.64%	Sudah mencapai TP 1, TP partial, sisanya HOLD
13-03-2024	INCO	BUY	4200	4070	4300-4460	3940	-3.10%	Sudah mencapai TP 1, TP partial, sisanya HOLD
18-03-2024	BRIS	BUY	2690	2710	2870-2960	2490	0.74%	HOLD
18-03-2024	INDY	BUY	1475	1495	1510-1600	1370	1.36%	Sudah mencapai TP 1, TP partial, sisanya HOLD
19-03-2024	ENRG	BUY	222	216	230-242	208	-2.70%	Sudah mencapai TP 1, TP partial, sisanya HOLD
19-03-2024	CTRA	BUY	1270	1300	1330-1400	1200	2.36%	Sudah mencapai TP 1, TP partial, sisanya HOLD
20-03-2024	RAJA	BUY	1305	1365	1375-1455	1230	4.60%	HOLD
20-03-2024	TPIA	BUY	5350	5825	5700-6500	5000	8.88%	Sudah mencapai TP 1, TP partial, sisanya HOLD
21-03-2024	BFIN	BUY	1320	1340	1375-1455	1255	1.52%	HOLD
21-03-2024	MIKA	BUY	2750	2740	2850-2930	2570	-0.36%	HOLD
21-03-2024	SIDO	BUY	630	620	660-680	600	-1.59%	HOLD
21-03-2024	LPPF	BUY	1795	1760	1860-1940	1675	-1.95%	HOLD

Catatan:

Swing Trade adalah saham pilihan dengan Trend Bullish dan berpotensi Bullish yang bisa di Buy & Hold sampai muncul sinyal pembalikan arah tren (reversal).

*rekomendasi baru Call Price adalah harga pada saat rekomendasi dikeluarkan.

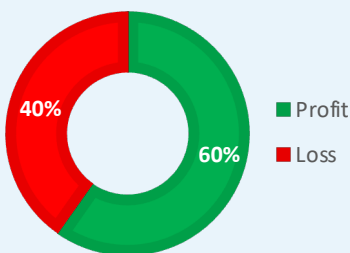
Selengkapnya [Klik disini](#)

RESULT RECOMMENDATION

IHSG PERFORMANCE

DAY TRADING PERFORMANCE

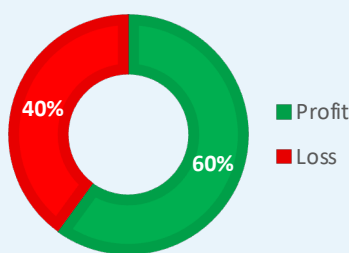
WIN RATE



Gain/Loss **95,19%**

SWING TRADING PERFORMANCE

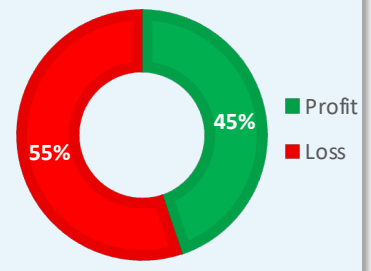
WIN RATE



Gain/Loss **152,18%**

IHSG YTD PERFORMANCE

LATEST :7.288,813



YTD

0,28%

Catatan:

Periode : Februari 2024 - Now



SPOTLIGHT BBRI

Bank Rakyat Indonesia (Persero, 1D, IDX O6100 H6200 L6025 C6050 -200 (-3.20%)
MA (60, close, 0, SMA, 9) 5943
MA (20, close, 0, SMA, 9) 6156



Trend bullish, harga sedang mengalami koreksi dengan support 5950. Waspada perlambatan bullish trend jika harga turun di bawah support 5950.

Highlight News BBRI

BRI Dorong UMKM Mainkan Peran Digital untuk Dorong Pertumbuhan Ekonomi Digital

Pertumbuhan digital ekonomi yang terjadi di seluruh dunia semakin tumbuh pesat. Managing Director of the KIT Knowledge Unit Mayada El-Zoghbi mengungkapkan, pertumbuhan digitalisasi dibuktikan oleh jumlah pengguna internet yang sudah mencapai 202,6 juta pengguna dan 64% dari total penduduk Indonesia juga sudah memiliki ponsel.

Menurut Mayada usaha mikro, kecil, dan menengah (UMKM), digitalisasi memainkan peran kunci dalam pemberdayaan dan membangun keberlanjutan usaha. Pasalnya, bisnis di Indonesia mayoritas UMKM, bahkan berkontribusi 60% terhadap Penerimaan Domestik Bruto (PDB).

Bagi BRI, digitalisasi menjadi salah satu pondasi transformasi digital yang selama ini dilakukan. Sepanjang tahun 2023, tercatat sebesar 99% dari total transaksi BRI dilakukan melalui kanal digital.

Source: <https://keuangan.kontan.co.id/news/bri-dorong-umkm-mainkan-peran-digital-untuk-dorong-pertumbuhan-ekonomi-digital>



SAPA MENTARI

SAJIAN PAGI MENU TRADING DARI BRI DANAREKSA SEKURITAS

Senin, 1 April 2024

NIKMATI BERBAGAI PROMO MENARIK DARI BRI DANAREKSA SEKURITAS!

SCAN DISINI BUAT DAPETIN PROMONYA!



[Klik disini untuk cek Promo dari BRIDS!](#)



DOWNLOAD brights SEKARANG!



Call Center 1500 688 brids.co.id

BRI Danarekxa Sekuritas berizin dan diawasi oleh Otoritas Jasa Keuangan

[@bridanarekxa](#)

[BRI Danarekxa Sekuritas](#)

[bridsofficial](#)

[BRIDS Official Channel](#)

[BRI Danarekxa Sekuritas](#)

WE'RE ONE CALL AWAY!



[@bridanarekxa](#)



[YouTube BRIDS](#)



[Telegram BRIDS](#)



[TikTok BRIDS](#)



CALL CENTER BRIDS:

(021) 1500 688

callcenter@brids.co.id



WhatsApp Business Official: (+62) 858-5150-0688

KUNJUNGI WEBSITE KAMI

www.brights.id



Senin, 1 April 2024

PT BRI Danareksa Sekuritas

Wisma GKBI, 16th Floor Jl. Jenderal Sudirman Kav. 28 Jakarta Indonesia 10210

Phone : 021-50914100

Fax : 021-2520990

RETAIL TEAM

Ferdi Armand Hanafi

ferdi.hanafi@bridanareksasekuritas.co.id

(62-21) 50914100 ext. 2870

Head - Retail Business Activation & Engagement

Reiza Afriansyah

reiza.afriansyah@bridanareksasekuritas.co.id

(62-21) 50914100 ext. 2830

Head - Retail Business Acquisition

Chory Agung Ramdhani

chory.ramdhani@brids.co.id

(62-21) 50914100 ext.2850

Customer Engagement & Education - Unit Head

Reyhan Pratama

reyhan.pratama@brids.co.id

(62-21) 50914100 ext.2851

Technical Analyst



Disclaimer

The information contained in this report has been taken from sources which we deem reliable. However, none of P.T. Danareksa Sekuritas and/or its affiliated companies and/or their respective employees and/or agents makes any representation or warranty (express or implied) or accepts any responsibility or liability as to, or in relation to, the accuracy or completeness of the information and opinions contained in this report or as to any information contained in this report or any other such information or opinions remaining unchanged after the issue thereof.

We expressly disclaim any responsibility or liability (express or implied) of P.T. Danareksa Sekuritas, its affiliated companies and their respective employees and agents whatsoever and howsoever arising (including, without limitation for any claims, proceedings, action, suits, losses, expenses, damages or costs) which may be brought against or suffered by any person as a result of acting in reliance upon the whole or any part of the contents of this report and neither P.T. Danareksa Sekuritas, its affiliated companies or their respective employees or agents accepts liability for any errors, omissions or misstatements, negligent or otherwise, in the report and any liability in respect of the report or any inaccuracy therein or omission therefrom which might otherwise arise is hereby expressly disclaimed.

The information contained in this report is not taken as any recommendation made by P.T. Danareksa Sekuritas or any other person to enter into any agreement with regard to any investment mentioned in this document. This report is prepared for general circulation. It does not have regard to the specific person who may receive this report. In considering any investments you should make your own independent assessment and seek your own professional financial and legal advice.