

Tuesday, November 7, 2023

DEBT RESEARCH

## MOST ACTIVE GOVERNMENT BONDS

Bond	Coupon	Maturity	Last Price	Yield	Volume (IDR bn)
FR0096	7.000	15-Feb-33	102.30	6.837	4,200.93
FR0100	6.625	15-Feb-34	99.93	6.826	2,023.51
FR0086	5.500	15-Apr-26	97.65	6.608	1,607.12
PBS003	6.875	15-Apr-29	98.02	6.812	1,343.84
FR0097	6.875	15-Apr-29	101.80	7.154	1,239.89
FR0095	6.375	15-Aug-28	98.99	6.673	1,124.29
FR0091	6.375	15-Apr-32	97.70	7.084	937.00
FR0101	6.875	15-Apr-29	100.60	5.453	935.31
FR0082	7.000	15-Sep-30	101.30	6.826	912.32
FR0098	7.125	15-Jun-38	102.70	6.983	722.76

Coupon, Last Price & Yield are in %; Volume is in IDR bn; Rating code: id(Pefindo) & idn (Fitch Indonesia)  
Sources: Bloomberg; Indonesia Stock Exchange (Volume)

## MOST ACTIVE CORPORATE BONDS

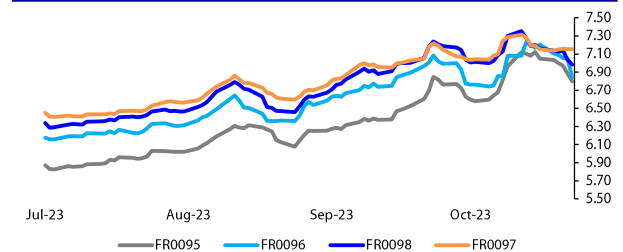
Bond	Rating	Coupon	Maturity	Last Price	Yield	Volume
WISL02A	idA	6.750	18-Aug-24	98.57	6.85	200.00
PIHC01BCN1	AAA(idn)	8.600	12-Jul-24	101.35	8.49	50.00
BIIF02BCN2	AA+(idn)	9.350	2-Apr-24	100.03	9.35	47.00
ADMFO4CCN5	idAAA	9.150	16-Apr-24	100.03	9.15	44.00
PNMP04BCN1	idAA	5.500	10-Dec-24	99.22	6.25	40.00
INKP01BCN3	idA+	10.000	11-Dec-23	100.26	9.97	30.00
LPPI02BCN2	idA	10.500	6-Oct-26	100.01	10.49	29.40
SMMA02BCN3	irAA	10.500	4-Oct-32	102.14	10.13	27.12
SMAR03BCN1	idA+	8.750	10-Jun-24	100.79	8.68	24.00
BBRI01AGNCN2	idAAA	6.100	27-Oct-24	100.00	6.10	20.00

## SOVEREIGN BOND YIELDS

Country	Tenor	Coupon (%)	6-Nov-23	MA LTM as of Sep	MA LTM as of Aug	Spread over UST YC (bps)	6-Nov-23	Sep	Aug
United States	2yr		4.97	4.97	4.85				
USD	5yr		4.64	4.64	4.54				
	10yr		4.37	4.37	4.19				
German	2yr	0.25	2.98	3.20	2.98	-242	-220	-239	
EUR	5yr	1.00	2.58	2.78	2.48	-206	-186	-206	
	10yr	1.75	2.69	2.84	2.47	-168	-153	-172	
Indonesia	2yr	4.13	-	5.62	5.42	-	22	5	
USD	5yr	3.50	-	5.55	5.24	-	91	70	
	10yr	3.85	-	5.69	5.15	-	132	96	
Brazil	2yr	0.00	10.70	-	10.28	530	-	491	
BRL	3yr	0.00	10.79	-	10.37	539	-	500	
	10yr	10.00	11.46	-	11.19	606	-	582	
Philippines	2yr	6.00	6.69	6.27	6.22	129	86	85	
PHP	5yr	7.88	6.74	6.38	6.38	210	174	184	
	10yr	11.38	6.92	6.49	6.37	255	212	218	
Thailand	2yr	3.13	2.57	2.57	2.33	-283	-283	-304	
THB	5yr	3.45	2.87	2.90	2.54	-177	-174	-200	
	10yr	3.63	3.16	3.15	2.77	-121	-122	-142	
India	2yr	7.59	7.27	7.26	7.17	187	186	180	
INR	5yr	7.28	7.27	7.24	7.16	263	260	262	
	10yr	8.83	7.30	7.22	7.17	293	285	298	
Malaysia	3yr	3.17	3.56	3.58	3.47	-141	-140	-138	
MYR	5yr	3.26	3.75	3.73	3.60	-89	-91	-94	
	10yr	4.18	3.92	3.99	3.85	-45	-38	-34	

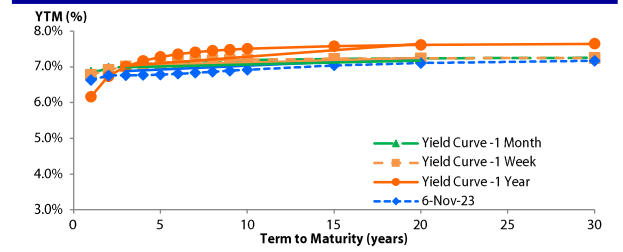
Sources: Bloomberg (Current Yield Curve), US Treasury

## YIELD OF GOVERNMENT BOND BENCHMARK (%)



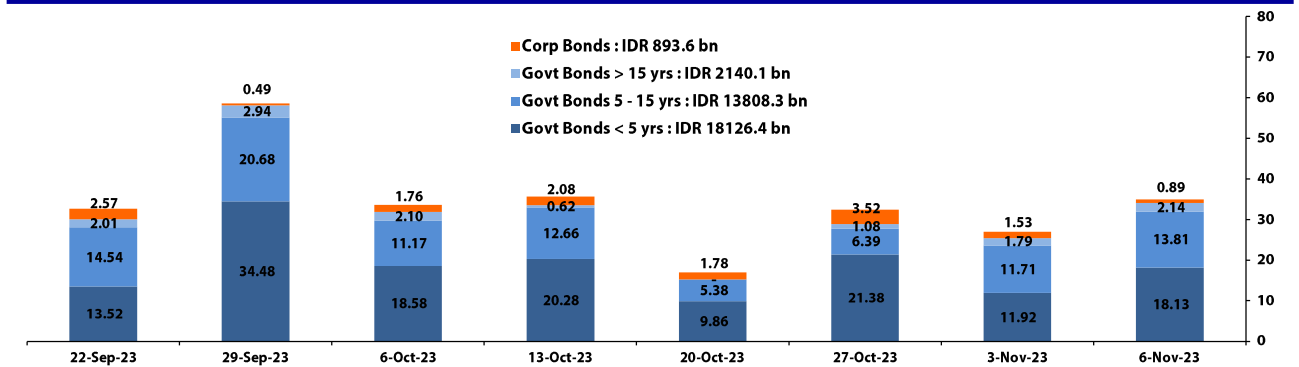
Source: DJPPR

## YIELD CURVE MOVEMENT (%)



Source: Bloomberg

## TRADING VOLUME BY MATURITY (IDR TRILLION)



Sources: Indonesia Stock Exchange

## CURRENCY

Price	6-Nov-23	-1 Day	-1 Week	-1 Month	EoP2022
DXY	104.90 ↓	105.02	106.12	106.04	103.52
USD : IDR	15,538 ↓	15,728	15,890	15,610	15,568
EUR : USD	1.08 ↑	1.07	1.06	1.06	1.07
JPY : USD	149.53 ↑	149.39	149.10	149.32	131.12
USD : CNY	7.265 ↓	7.275	7.311	7.298	6.899
USD : SGD	4.635 ↓	4.727	4.764	4.714	4.404
SGD : IDR	11,504 ↓	11,542	11,613	11,422	11,608

Source : Bloomberg

## COMMODITY

Price	6-Nov-23	-1 Day	-1 Week	-1 Month	EoP2022
CPO	3,660 ↑	3,632	3,625	3,562	4,171
Coal	122.50 →	122.50	131.00	138.50	404.15
Gold	1,986 ↓	1,993	1,996	1,833	1,824
Nickel	18,008 →	18,008	18,292	18,336	29,901
Copper	369.70 ↑	368.15	365.85	362.75	381.05
Brent	87.99 ↓	88.50	89.03	88.12	81.35
Metal	1,986.01 ↓	1,992.65	1,996.10	1,833.01	1,824.02

PHEI FAIR SPREAD	1Y	2Y	3Y	4Y	5Y	6Y	7Y	8Y	9Y	10Y
AAA	52	55	57	60	65	69	73	76	77	78
AA+*	63	73	80	89	97	106	113	119	124	127
AA	82	98	110	122	135	147	157	166	172	177
AA-*	113	135	151	166	181	194	207	217	225	231
A+*	154	183	201	218	234	249	263	274	283	290
A	204	236	257	276	294	311	326	339	349	357
A-*	260	293	316	338	359	379	397	411	423	432
BBB+*	320	351	376	401	427	451	472	490	504	514
BBB	383	411	437	466	497	526	551	571	587	599

\*interpolated, as of November 06, 2023 (bps)

SBN HOLDING - (IDR tn)	03-Nov-2023	Weekly	MtD	YTD
Banks	1,612.7	2.3	1.8	-84.7
Bank Indonesia (exclude repo)	951.6	-1.8	2.1	-68.4
Non-Banks:	2,974.7	18.9	15.4	382.7
Mutual Fund	176.9	-3.0	-2.6	31.1
Insurance & Pension Fund	1,025.4	5.5	4.8	152.4
Foreign Investor	818.0	9.1	7.6	55.8
Others	540.8	4.4	3.7	74.2
Total	5,539.1	19.3	19.3	229.6
Domestic Investor	3,769.4	12.1	9.6	242.2
Foreign Investor	818.0	9.1	7.6	55.8
Bank Indonesia (include repo)	1,360.9	0.0	0.0	-92.6

Sources : PHEI, Bloomberg

Source : DJPPR (Processed)

Tuesday, November 7, 2023

D E B T RESEARCH

## VALUATIONS OF GOVERNMENT BONDS

Bond	Issue Date	Mature Date	Coupon	TTM	Modified Duration	YTM (Change)	Prev Closing Price	Fair Yield Range	Fair Price Range	Last Trade			
										Date	Price	Vol (IDR bn)	Freq
FR0081	1-Aug-19	15-Jun-25	6.50	1.6	1.47	6.54	99.93	6.701	6.834	99.49	99.69	6-Nov-23	100.00
FR0040	21-Sep-06	15-Sep-25	11.00	1.9	1.66	6.73	107.30	6.656	6.789	107.21	107.45	3-Nov-23	107.16
FR0084	4-May-20	15-Feb-26	7.25	2.3	2.04	6.82	100.88	6.682	6.816	100.89	101.17	3-Nov-23	100.66
FR0086	13-Aug-20	15-Apr-26	5.50	2.4	2.23	6.61	97.54	6.696	6.829	97.05	97.34	6-Nov-23	97.65
FR0037	18-May-06	15-Sep-26	12.00	2.9	2.41	6.94	112.90	6.543	6.676	113.62	114.00	11-Oct-23	114.30
FR0056	23-Sep-10	15-Sep-26	8.38	2.9	2.50	6.67	104.36	6.678	6.812	103.98	104.33	6-Nov-23	104.40
FR0090	8-Jul-21	15-Apr-27	5.13	3.4	3.08	6.57	95.62	6.641	6.774	95.01	95.40	6-Nov-23	95.75
FR0059	15-Sep-11	15-May-27	7.00	3.5	2.98	6.76	100.73	6.725	6.859	100.43	100.85	6-Nov-23	101.01
FR0042	25-Jan-07	15-Jul-27	10.25	3.7	3.00	6.91	110.69	6.762	6.895	110.75	111.21	17-Oct-23	111.75
FR0094	4-Mar-22	15-Jan-28	5.60	4.2	3.59	7.00	95.00	6.639	6.772	95.77	96.24	16-Oct-23	95.70
FR0047	30-Aug-07	15-Feb-28	10.00	4.3	3.43	6.95	111.07	6.698	6.832	111.55	112.08	2-Nov-23	110.26
FR0064	13-Aug-12	15-May-28	6.13	4.5	3.77	6.71	97.77	6.674	6.808	97.38	97.88	6-Nov-23	98.15
FR0095	19-Aug-22	15-Aug-28	6.38	4.8	4.00	6.67	98.79	6.637	6.771	98.39	98.93	6-Nov-23	98.99
FR0099	27-Jan-23	15-Jan-29	6.40	5.2	4.25	6.90	97.84	6.580	6.714	98.63	99.21	25-Sep-23	99.77
FR0071	12-Sep-13	15-Mar-29	9.00	5.4	4.23	6.81	109.68	6.728	6.861	109.44	110.07	3-Nov-23	111.11
FR0078	27-Sep-18	15-May-29	8.25	5.5	4.27	6.84	106.41	6.749	6.838	106.40	106.83	6-Nov-23	106.90
FR0052	20-Aug-09	15-Aug-30	10.50	6.8	4.90	7.12	117.89	6.765	6.898	119.21	120.01	6-Nov-23	119.15
FR0082	1-Aug-19	15-Sep-30	7.00	6.9	5.33	6.83	100.93	6.770	6.903	100.51	101.23	6-Nov-23	101.30
FR0087	13-Aug-20	15-Feb-31	6.50	7.3	5.62	6.79	98.36	6.790	6.924	97.60	98.34	6-Nov-23	98.03
FR0085	4-May-20	15-Apr-31	7.75	7.4	5.62	6.81	105.40	6.830	6.963	104.50	105.29	2-Nov-23	102.91
FR0073	6-Aug-15	15-May-31	8.75	7.5	5.38	6.88	110.86	6.843	6.976	110.25	111.07	6-Nov-23	111.30
FR0054	22-Jul-10	15-Jul-31	9.50	7.7	5.45	6.96	114.91	6.858	6.992	114.71	115.57	6-Nov-23	117.05
FR0091	8-Jul-21	15-Apr-32	6.38	8.4	6.36	7.08	95.55	6.779	6.913	96.60	97.43	6-Nov-23	97.70
FR0058	21-Jul-11	15-Jun-32	8.25	8.6	6.04	6.85	108.98	6.606	6.939	108.37	109.28	3-Nov-23	108.25
FR0074	10-Nov-16	15-Aug-32	7.50	8.8	6.32	6.84	104.27	6.833	6.967	103.44	104.33	6-Nov-23	103.90
FR0096	19-Aug-22	15-Feb-33	7.00	9.3	6.66	6.84	101.09	6.720	6.853	100.98	101.90	6-Nov-23	102.30
FR0065	30-Aug-12	15-May-33	6.63	9.5	6.74	6.84	98.49	6.796	6.930	97.90	98.81	6-Nov-23	98.90
FR0100	25-Aug-23	15-Feb-34	6.63	10.3	7.23	6.83	98.52	6.786	6.920	97.84	98.81	6-Nov-23	99.93
FR0068	1-Aug-13	15-Mar-34	8.38	10.4	6.98	6.90	110.79	6.858	6.992	110.06	111.10	6-Nov-23	111.10
FR0080	4-Jul-19	15-Jun-35	7.50	11.6	7.56	6.93	104.46	6.938	7.072	103.34	104.42	6-Nov-23	104.20
FR0072	9-Jul-15	15-May-36	8.25	12.5	7.70	7.04	109.95	6.961	7.094	109.49	110.66	6-Nov-23	109.69
FR0088	7-Jan-21	15-Jun-36	6.25	12.6	8.30	6.84	95.10	6.837	6.971	94.01	95.08	6-Nov-23	95.20
FR0045	24-May-07	15-May-37	9.75	13.5	7.76	7.19	121.89	6.901	7.035	123.44	124.79	2-Nov-23	119.84
FR0093	6-Jan-22	15-Jul-37	6.38	13.7	8.72	6.94	95.01	6.824	6.957	94.90	96.03	6-Nov-23	94.50
FR0075	10-Aug-17	15-May-38	7.50	14.5	8.57	7.13	103.32	7.027	7.160	103.03	104.26	6-Nov-23	104.60
FR0098	15-Sep-22	15-Jun-38	7.13	14.6	8.79	6.98	101.28	6.933	7.067	100.51	101.73	6-Nov-23	102.70
FR0050	24-Jan-08	15-Jul-38	10.50	14.7	8.16	7.07	131.02	6.986	7.120	130.47	131.93	16-Oct-23	131.20
FR0079	7-Jan-19	15-Apr-39	8.38	15.4	8.95	7.07	112.17	7.042	7.176	111.08	112.42	6-Nov-23	113.30
FR0083	7-Nov-19	15-Apr-40	7.50	16.4	9.45	7.14	103.48	7.062	7.166	103.19	104.22	6-Nov-23	103.95
FR0057	21-Apr-11	15-May-41	9.50	17.5	8.99	7.24	122.29	6.816	6.949	125.61	127.21	1-Nov-23	124.80
FR0062	9-Feb-12	15-Apr-42	6.38	18.4	10.49	6.86	94.92	6.825	6.959	93.98	95.31	6-Nov-23	96.00
FR0092	8-Jul-21	15-Jun-42	7.13	18.6	9.96	7.08	100.43	7.015	7.149	99.75	101.12	6-Nov-23	100.97
FR0097	19-Aug-22	15-Jun-43	7.13	19.6	10.18	7.15	99.69	7.005	7.139	99.84	101.25	6-Nov-23	101.80
FR0067	18-Jul-13	15-Feb-44	8.75	20.3	9.94	7.36	114.56	7.180	7.313	115.05	116.62	3-Nov-23	116.18
FR0076	22-Sep-17	15-May-48	7.38	24.5	11.05	7.14	102.69	7.053	7.186	102.16	103.73	6-Nov-23	103.15
FR0089	7-Jan-21	15-Aug-51	6.88	27.8	11.96	7.08	97.50	6.961	7.095	97.34	98.93	6-Nov-23	97.65
ORI020	27-Oct-21	15-Oct-24	4.95	0.9	-	6.69	98.42	6.488	6.621	98.48	98.60	6-Nov-23	97.95
ORI021	23-Feb-22	15-Feb-25	4.90	1.3	-	6.77	97.73	6.556	6.690	97.82	97.98	6-Nov-23	96.55
ORI022	26-Oct-22	15-Oct-25	5.95	1.9	-	6.58	98.85	6.397	6.531	98.99	99.19	6-Nov-23	99.30
IFR0007	21-Jan-10	15-Jan-25	10.25	1.2	1.09	6.46	104.24	6.307	6.440	104.28	104.44	27-Jan-22	115.88
PBS036	25-Aug-22	15-Aug-25	5.38	1.8	1.64	6.68	97.85	6.634	6.768	97.70	97.91	6-Nov-23	97.97
PBS017	11-Jan-18	15-Oct-25	6.13	1.9	1.79	6.43	99.45	6.030	6.164	99.93	100.17	2-Nov-23	101.00
PBS032	29-Jul-21	15-Jul-26	4.88	2.7	2.43	6.64	95.71	6.419	6.553	95.91	96.23	6-Nov-23	94.75
PBS021	5-Dec-18	15-Nov-26	8.50	3.0	2.55	6.56	105.22	6.247	6.380	105.75	106.12	31-Oct-23	103.65
PBS003	2-Feb-12	15-Jan-27	6.00	3.2	2.80	6.81	97.70	6.268	6.402	98.85	99.22	6-Nov-23	98.02
PBS020	22-Oct-18	15-Oct-27	9.00	3.9	3.30	6.84	107.32	6.369	6.502	108.55	109.03	24-Jul-19	107.12
PBS018	4-Jun-18	15-May-28	7.63	4.5	3.66	6.83	103.04	6.368	6.501	104.34	104.87	3-Sep-19	99.29
PBS030	4-Jun-21	15-Jul-28	5.88	4.7	3.94	6.90	95.93	6.458	6.592	97.14	97.66	3-Nov-23	97.11
PBSG001	22-Sep-22	15-Sep-29	6.63	5.9	4.75	6.58	100.20	6.193	6.326	101.43	102.09	2-Oct-23	102.20
PBS023	15-May-19	15-May-30	6.63	6.5	5.06	6.79	106.95	6.430	6.564	100.32	101.02	2-Nov-23	105.81
PBS012	28-Jan-16	15-Nov-31	8.88	8.0	5.65	6.69	113.37	6.390	6.523	114.51	115.41	6-Nov-23	113.65
PBS024	28-May-19	15-May-32	8.38	8.5	5.95	6.87	109.59	6.486	6.619	111.30	112.22	20-Dec-22	94.07
PBS025	29-May-19	15-May-33	8.38	9.5	6.41	7.05	109.05	6.627	6.761	111.20	112.20	16-Oct-23	110.90
PBS029	14-Jan-21	15-Mar-34	6.38	10.4	7.34	7.02	95.31	6.594	6.727	97.39	98.37	6-Nov-23	96.25
PBS022	24-Jan-19	15-Apr-34	8.63	10.4	6.95	7.41	108.68	6.578	6.712	114.19	115.28	1-Nov-23	111.82
IFR0010	3-Mar-11	15-Feb-36	10.00	12.3	7.45	7.09	123.59	6.696	6.829	126.04	127.34	4-Oct-23	126.54
PBS037	12-Jan-23	15-Mar-36	6.88	12.4	8.12	7.07	98.39	6.727	6.860	100.11	101.22	6-Nov-23	99.25
PBS004	16-Feb-12	15-Feb-37	6.10	13.3	8.64	7.09	91.55	6.720	6.853	93.49	94.60	6-Nov-23	94.50
PBS034	13-Jan-22	15-Jun-39	6.50	15.6	9.31	6.97	95.54	6.667	6.801	97.12	98.38	6-Nov-23	95.70
PBS007	29-Sep-14	15-Sep-40	9.00	16.9	9.18	7.12	118.30	6.758	6.891	120.82	122.34	20-Oct-23	119.70
PBS035	30-Mar-22	15-Mar-42	6.75	18.4	10.22	7.01	97.37	6.745	6.878	98.66	100.05	24-Nov-22	97.05
PBS005	2-May-13	15-Apr-43	6.75	19.4	10.67	6.81	99.36	6.661	6.795	99.52	100.95	3-Nov-23	94.00
PBS028	23-Jul-20	15-Oct-46	7.75	22.9	10.96	7.18	106.34	6.894	7.028	108.16	109.78	26-Oct-23	108.20
PBS033	13-Jan-22	15-Jun-47	6.75	23.6	11.15	7.15	95.51	6.888	7.022	96.88	98.39	6-Nov-23	98.80
PBS015	21-Jul-17	15-Jul-47	8.00	23.7	11.00	6.95	112.16	6.731	6.864	113.19	114.91	1-Nov-23	111.65
SRO15	22-Sep-21	10-Sep-24	5.10	0.8	-	6.53	98.83	6.287	6.421	98.92	99.03	6-Nov-23	100.25
SRO16	23-Mar-22	10-Mar-25	4.95	1.3	-	6.57	97.92	6.392	6.526	97.98	98.15	6-Nov-23	96.40
SRO17	21-Sep-22	10-Sep-25	5.90	1.8	-	6.84	98.39	6.612	6.746	98.54	98.77	6-Nov-23	97.75

\*Val: Valuation based on ENSS Yield Curve; MDur (Modified Duration) is in year; Coupon, Price, &amp; Yield are in %

Source : Bloomberg, PT BRI Danareksa Sekuritas, IDX (Last Trade)

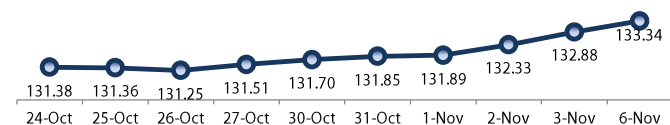
Analysts : Laras Nerpatri &amp; Eka Nuraini

Disclaimer: The information contained in this report has been taken from sources which we deem reliable. However, none of P.T. BRI Danareksa Sekuritas and/or its affiliated companies and/or their respective employees and/or agents makes any representation or warranty (express or implied) or accepts any responsibility or liability as to, or in relation to, the accuracy or completeness of the information and opinions contained in this report or as to any information contained in this report or any other such information or opinions remaining unchanged after the issue thereof. We expressly disclaim any responsibility or liability (express or implied) of P.T. BRI Danareksa Sekuritas, its affiliated companies and their respective employees and agents whatsoever and howsoever arising (including, without limitation for any claims, proceedings, action, suits, losses, expenses, damages or costs) which may be brought against or suffered by any person as a result of acting in reliance upon the whole or any part of the contents of this report and neither P.T. BRI Danareksa Sekuritas, its affiliated companies or their respective employees or agents accepts liability for any errors, omissions or mis-statements, negligent or otherwise, in the report and any liability in respect of the report or any inaccuracy therein or omission therefrom which might otherwise arise is hereby expressly disclaimed. The information contained in this report is not to be taken as any recommendation made by P.T. BRI Danareksa Sekuritas or any other person to enter into any agreement with regard to any investment mentioned in this document. This report is prepared for general circulation. It does not have regard to the specific person who may receive this report. In considering any investments you should make your own independent assessment and seek your own professional financial and legal advice.

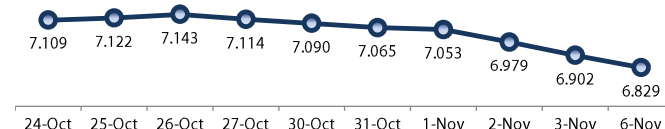
Tuesday, November 7, 2023

DEBT RESEARCH

## PRICE INDEX



## YIELD INDEX



## TECHNICAL ANALYSIS

## FR0095

INDICATORS	6-Nov-23	-1 Day	Change
Last Price	98.79	98.29	0.50
DI+	38.91	33.21	5.70
DI-	46.78	52.94	(6.16)
ADX (15D)	36.38	42.43	(6.05)
A/D	1,344.08	223.63	1,120.46
CMF(20D)	0.067	0.012	0.06
CCI	48.98	10.57	38.40
Volume (IDR bn)	1,124.29	438.18	686.11
Frequency	73	48	25

## COMMENT

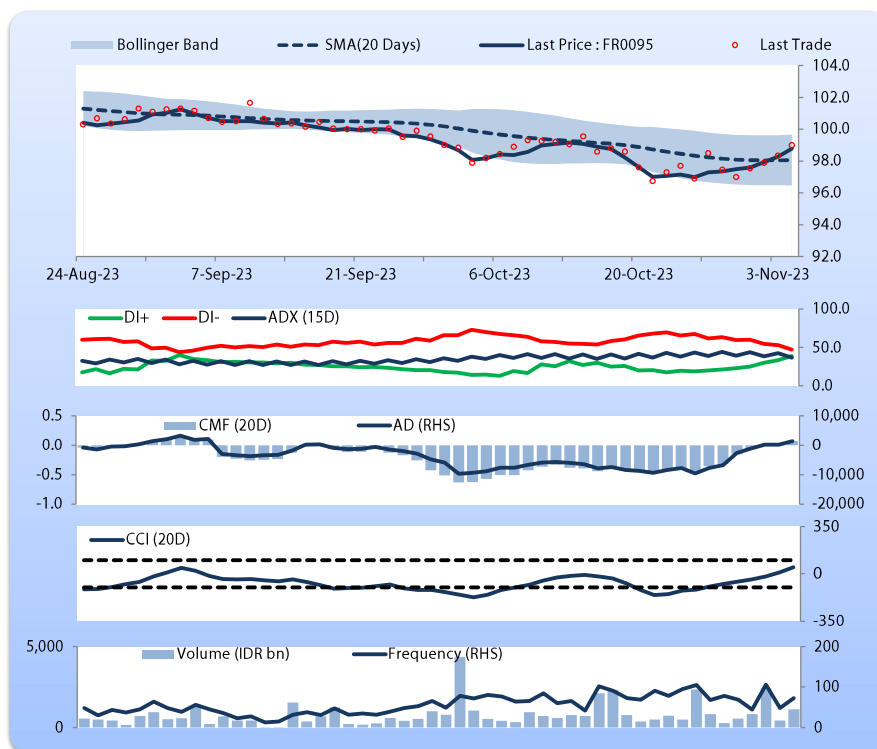
Price increased; heavy trade volume; upward trend continues to weaken; buying pressure increased; CCI increased.

## BUY

## FEATURES

Issue Date	19-Aug-22
Mature Date	15-Aug-28
Tenor	4.8
Coupon Rate	6.38
Last Yield	6.67
Modified Duration	4.00
Previous Coupon Date	15-Aug-23
Next Coupon Date	15-Feb-24

Sources: Bloomberg (Price); IDX



## FR0096

INDICATORS	6-Nov-23	-1 Day	Change
Last Price	101.09	101.06	0.04
DI+	41.53	40.49	1.04
DI-	48.58	48.54	0.04
ADX (15D)	34.27	34.36	(0.08)
A/D	20,020.54	15,627.86	4,392.68
CMF(20D)	0.533	0.440	0.09
CCI	52.58	54.67	(2.09)
Volume (IDR bn)	4,200.93	2,884.50	1,316.43
Frequency	164	98	66

## COMMENT

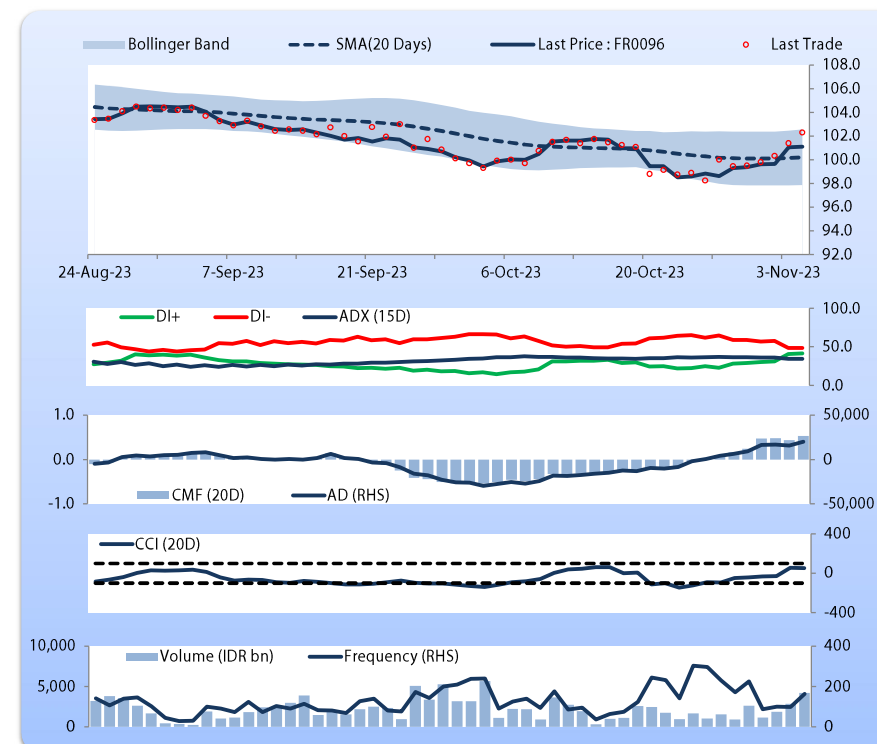
Price increased slightly; heavy trade volume; upward trend continues to weaken; buying pressure increased; CCI declined.

## HOLD

## FEATURES

Issue Date	19-Aug-22
Mature Date	15-Feb-33
Tenor	9.3
Coupon Rate	7.00
Last Yield	6.84
Modified Duration	6.66
Previous Coupon Date	15-Aug-23
Next Coupon Date	15-Feb-24

Sources: Bloomberg (Price); IDX



Tuesday, November 7, 2023

DEBT RESEARCH

FR0097

INDICATORS	6-Nov-23	-1 Day	Change
Last Price	99.69	99.69	0.00
DI+	32.66	31.99	0.68
DI-	53.72	54.69	(0.97)
ADX (15D)	31.35	32.21	(0.86)
A/D	-459.58	-345.70	(113.88)
CMF(20D)	-0.049	-0.041	(0.01)
CCI	-5.48	-7.68	2.21
Volume (IDR bn)	1,239.89	972.28	267.61
Frequency	147	109	38

## COMMENT

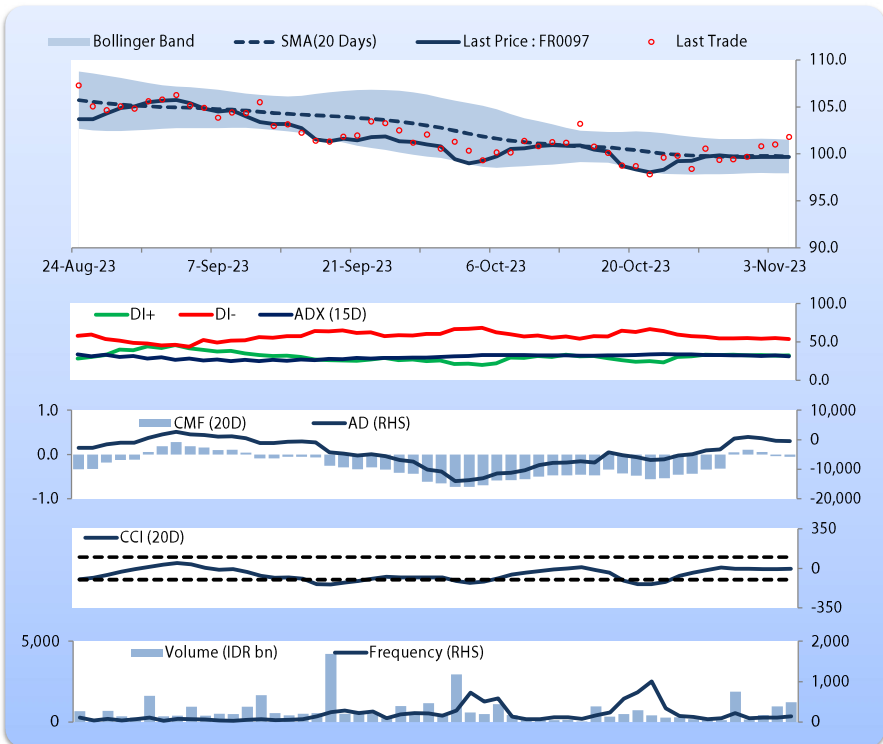
Price increased slightly; heavy trade volume; upward trend continues to weaken; selling pressure increased; CCI increased.

## HOLD

## FEATURES

Issue Date	19-Aug-22
Mature Date	15-Jun-43
Tenor	19.6
Coupon Rate	7.13
Last Yield	7.15
Modified Duration	10.18
Previous Coupon Date	15-Jun-23
Next Coupon Date	15-Dec-23

Sources: Bloomberg (Price); IDX



FR0098

INDICATORS	6-Nov-23	-1 Day	Change
Last Price	101.28	101.28	0.00
DI+	36.43	38.96	(2.53)
DI-	32.92	35.21	(2.29)
ADX (15D)	28.40	30.07	(1.67)
A/D	1,853.41	1,123.70	729.71
CMF(20D)	0.120	0.070	0.05
CCI	79.30	87.99	(8.68)
Volume (IDR bn)	722.76	466.31	256.44
Frequency	125	88	37

## COMMENT

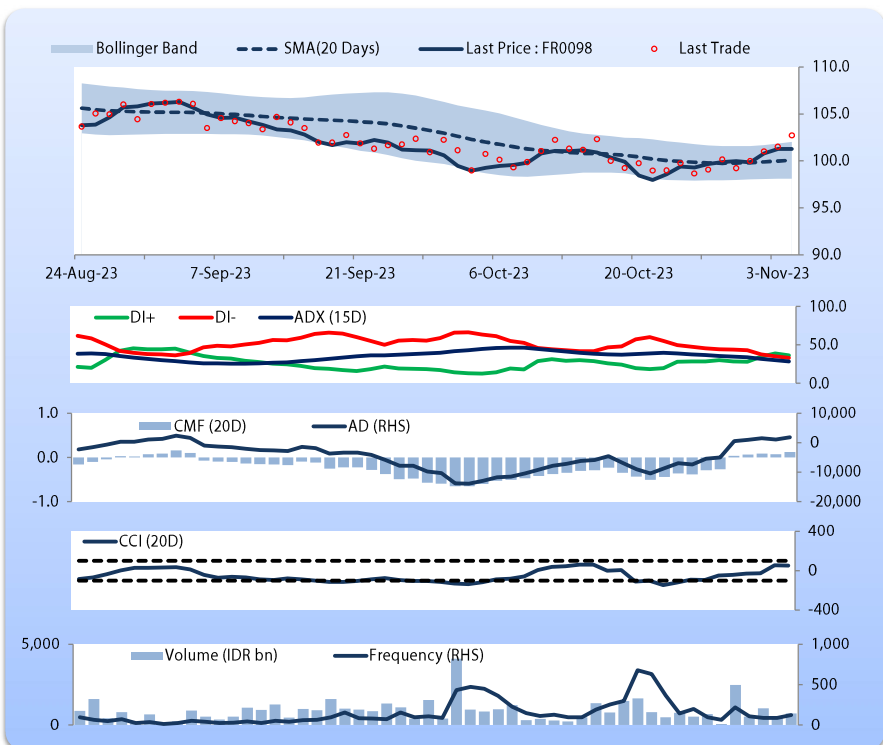
Price increased slightly; heavy trade volume; downward trend continues to weaken; buying pressure increased; CCI declined.

## HOLD

## FEATURES

Issue Date	15-Sep-22
Mature Date	15-Jun-38
Tenor (year)	14.6
Coupon Rate	7.13
Last Yield	6.98
Modified Duration	8.79
Previous Coupon Date	15-Jun-23
Next Coupon Date	15-Dec-23

Sources: Bloomberg (Price); IDX



Analysts: Laras Nerpatri &amp; Eka Nuraini

**DISCLAIMER:** The information contained in this report has been taken from sources which we deem reliable. However, none of P.T. BRI Danareksa Sekuritas and/or its affiliated companies and/or their respective employees and/or agents makes any representation or warranty (express or implied) or accepts any responsibility or liability as to, or in relation to, the accuracy or completeness of the information and opinions contained in this report or as to any information contained in this report or any other such information or opinions remaining unchanged after the issue thereof. We expressly disclaim any responsibility or liability (express or implied) of P.T. BRI Danareksa Sekuritas, its affiliated companies and their respective employees and agents whatsoever and howsoever arising (including, without limitation for any claims, proceedings, action, suits, losses, expenses, damages or costs) which may be brought against or suffered by any person as a result of acting in reliance upon the whole or any part of the contents of this report and neither P.T. BRI Danareksa Sekuritas, its affiliated companies or their respective employees or agents accepts liability for any errors, omissions or mis-statements, negligent or otherwise, in the report and any liability in respect of the report or any inaccuracy therein or omission therefrom which might otherwise arise is hereby expressly disclaimed. The information contained in this report is not to be taken as any recommendation made by P.T. BRI Danareksa Sekuritas or any other person to enter into any agreement with regard to any investment mentioned in this document. This report is prepared for general circulation. It does not have regard to the specific person who may receive this report. In considering any investments you should make your own independent assessment and seek your own professional financial and legal advice.